

District I
1625 N. French Dr., Hobbs, NM 88240
Phone: (575) 393-6161 Fax: (575) 393-0720
District II
811 S. First St., Artesia, NM 88210
Phone: (575) 748-1283 Fax: (575) 748-9720
District III
1000 Rio Brazos Road, Aztec, NM 87410
Phone: (505) 334-6178 Fax: (505) 334-6170
District IV
1220 S. St. Francis Dr., Santa Fe, NM 87505
Phone: (505) 476-3460 Fax: (505) 476-3462

State of New Mexico
Energy, Minerals & Natural Resources Department
OIL CONSERVATION DIVISION
1220 South St. Francis Dr.
Santa Fe, NM 87505

Form C-102
Revised August 1, 2011
Submit one copy to appropriate
District Office

☐ AMENDED REPORT

RECEIVED

WELL LOCATION AND ACREAGE DEDICATION PLAT

¹ API Number 30-025-43285	² Pool Code 44500	³ Pool Name MALJAMAR; YESO, WEST
⁴ Property Code 40134	⁵ Property Name SNEED 9 FEDERAL COM	⁶ Well Number 13H
⁷ GRID NO. 229137	⁸ Operator Name COG OPERATING, LLC	⁹ Elevation 4076'

¹⁰ Surface Location

UL or lot no.	Section	Township	Range	Lot Idn	Feet from the	North/South line	Feet From the	East/West line	County
E	9	17S	32E		1513	NORTH	229	WEST	LEA

¹¹ Bottom Hole Location If Different From Surface

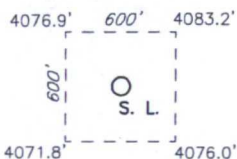
UL or lot no.	Section	Township	Range	Lot Idn	Feet from the	North/South line	Feet from the	East/West line	County
E	10	17S	32E		1650	NORTH	988	WEST	LEA

¹² Dedicated Acres 200	¹³ Joint or Infill	¹⁴ Consolidation Code	¹⁵ Order No.
--------------------------------------	-------------------------------	----------------------------------	-------------------------

No allowable will be assigned to this completion until all interest have been consolidated or a non-standard unit has been approved by the division.

16 GEODETIC DATA NAD 27 GRID - NM EAST SURFACE LOCATION N 674165.5 - E 670296.1 LAT 32.85213624° N LONG 103.77879546° W BOTTOM HOLE N 674049.6 - E 676335.2	CORNER DATA NAD 27 GRID - NM EAST A: FOUND BRASS CAP "1912" N 670400.2 - E 670086.3 B: FOUND BRASS CAP "1913" N 673038.1 - E 670068.2 C: FOUND PK NAIL N 675677.6 - E 670065.6 D: CALCULATED CORNER N 675698.0 - E 675338.3 E: FOUND 3/4" IRON PIPE N 675700.9 - E 677972.8 F: FOUND BRASS CAP "1913" N 675706.5 - E 680608.1 G: FOUND BRASS CAP "1913" N 673071.1 - E 680625.4	H: FOUND BRASS CAP "1913" N 670433.3 - E 680638.7 I: FOUND BRASS CAP "1913" N 670430.0 - E 678005.6 J: FOUND BRASS CAP "1913" N 670415.5 - E 675366.5 K: FOUND 1" IRON PIPE N 670407.8 - E 672725.7 1: CALCULATED POINT N 674357.8 - E 670066.9 2: CALCULATED POINT N 674380.2 - E 676663.2 3: CALCULATED POINT N 673060.3 - E 676670.8 4: CALCULATED POINT N 674377.4 - E 675345.3 5: CALCULATED POINT N 673056.7 - E 675352.4
---	---	--

DETAIL "A"



17 OPERATOR CERTIFICATION

I hereby certify that the information contained herein is true and complete to the best of my knowledge and belief, and that this organization either owns a working interest or unleased mineral interest in the land including the proposed bottom hole location or has a right to drill this well at this location pursuant to a contract with an owner of such a mineral or working interest, or to a voluntary pooling agreement or a compulsory pooling order heretofore entered by the division.

Signature: *Robyn M. Odom* Date: 11/11/2011

Printed Name: Robyn M. Odom

E-mail Address: Rodom@concho.com

18 SURVEYOR CERTIFICATION

I hereby certify that the well location shown on this plat was plotted from field notes of actual surveys made by me or under my supervision, and that the same is true and correct to the best of my belief.

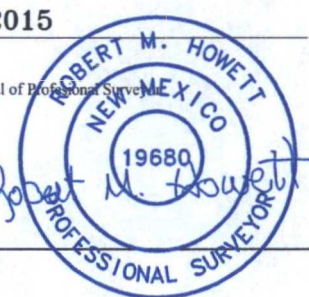
4-28-2015

Date of Survey

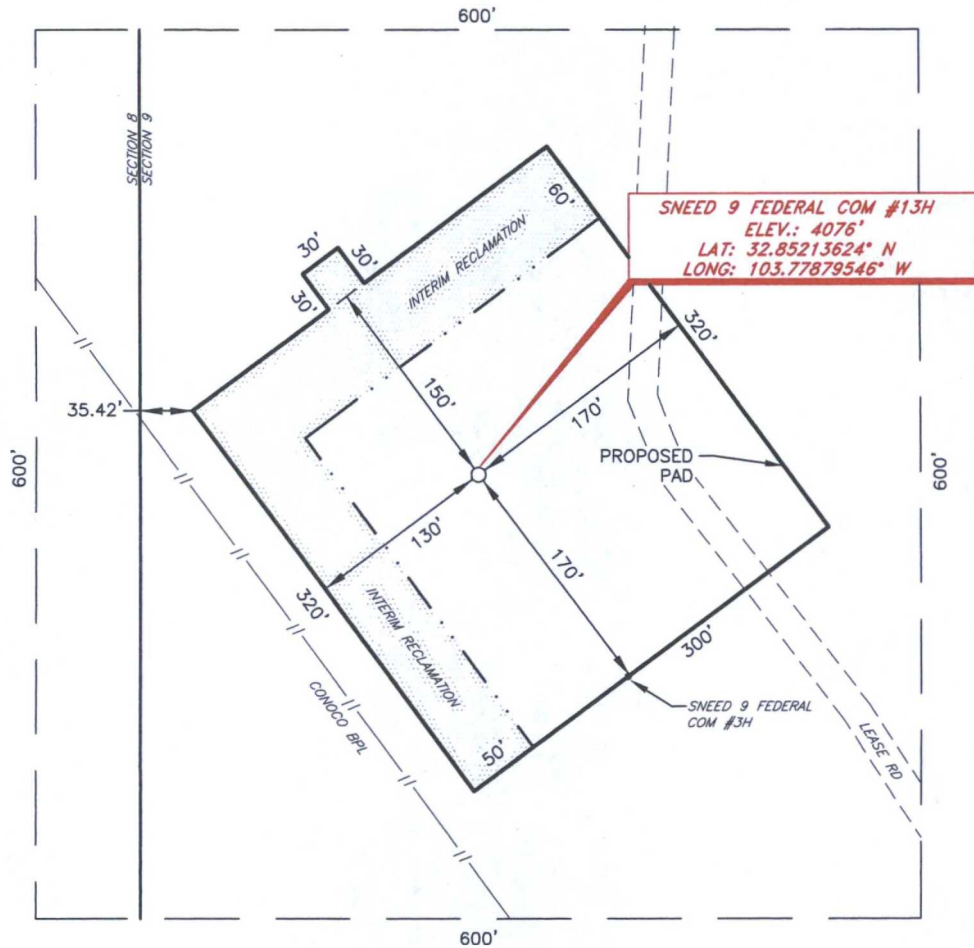
Signature and Seal of Professional Surveyor

19680

Certificate Number



COG OPERATING, LLC
 INTERIM RECLAMATION
 SNEED 9 FEDERAL COM #13H
 (1513' FNL & 229' FWL)
 SECTION 9, T17S, R32E
 N. M. P. M., LEA CO., NEW MEXICO



From the intersection U. S. Hwy. 82 and L-126 (Maljamar Road);
 Go South on L-126 approx. 0.6 miles to a lease road on the right;
 Turn right on lease road and go Southwest approx. 0.8 miles to a lease road on the right;
 Turn right and go North approx. 0.5 miles to a lease road on the left;
 Turn left and go West for approx. 0.2 miles to a lease road on the right;
 Turn right and go Northwest approx. 0.1 miles.
 Location is approx. 100 feet West of lease road.

SCALE: 1" = 100'
 0 50 100
 BEARINGS ARE
 NAD 27 GRID - NM EAST
 DISTANCES ARE
 GROUND.

Firm No.: TX 10193838 NM 4655451

Copyright 2015 - All Rights Reserved

NO.	REVISION	DATE
JOB NO.:	LS1504166	
DWG. NO.:	1504166REC	

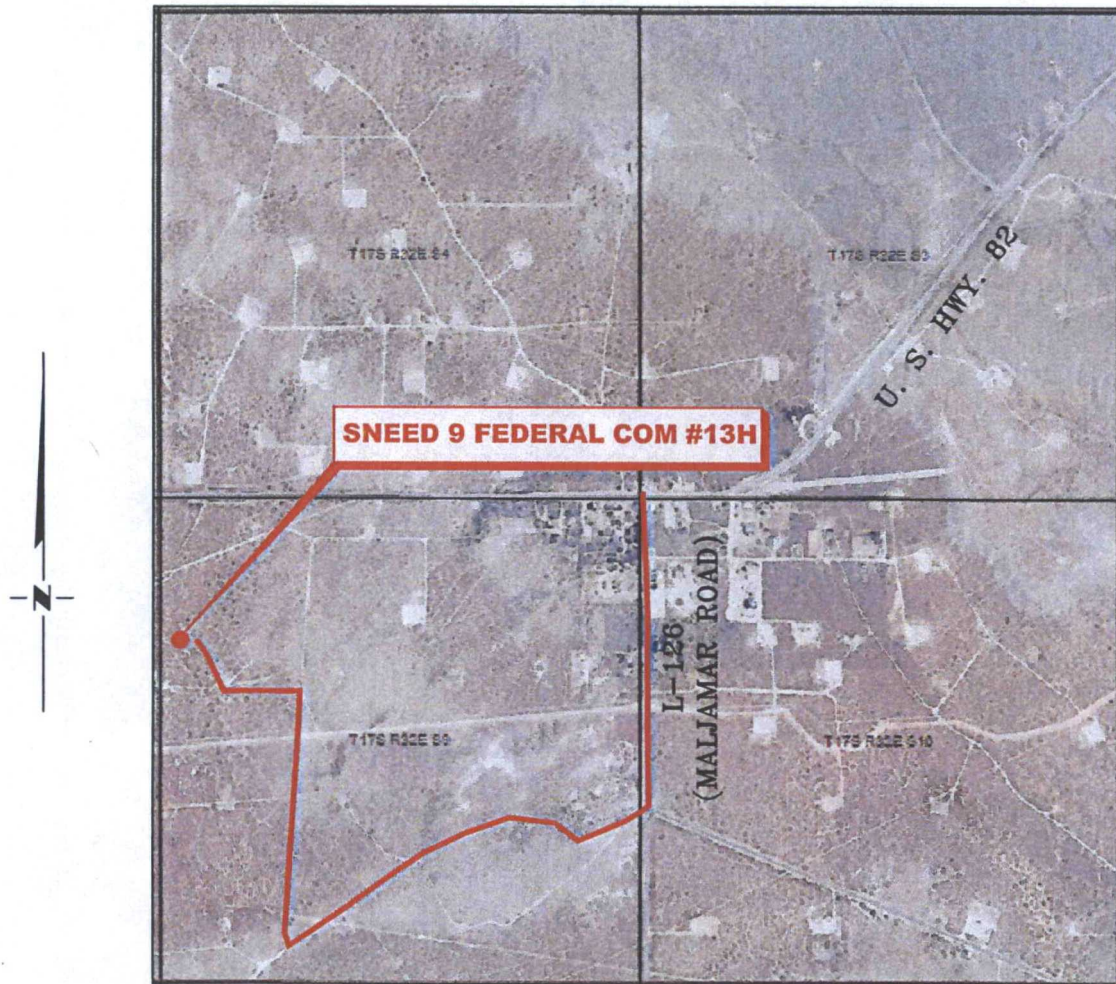
RRC

308 W. BROADWAY ST., HOBBS, NM 88240 (575) 964-8200

SCALE: 1" = 100'
DATE: 4-28-2015
SURVEYED BY: GB/ER
DRAWN BY: CMJ
APPROVED BY: RMH
SHEET : 1 OF 1

VICINITY MAP

NOT TO SCALE



*SECTION 9, TWP. 17 SOUTH, RGE. 32 EAST,
N. M. P. M., LEA CO., NEW MEXICO*

OPERATOR: COG Operating, LLC
LEASE: Sneed 9 Federal Com
WELL NO.: 13H

LOCATION: 1513' FNL & 229' FWL
ELEVATION: 4076'

Firm No.: TX 10193838 NM 4655451

Copyright 2015 - All Rights Reserved

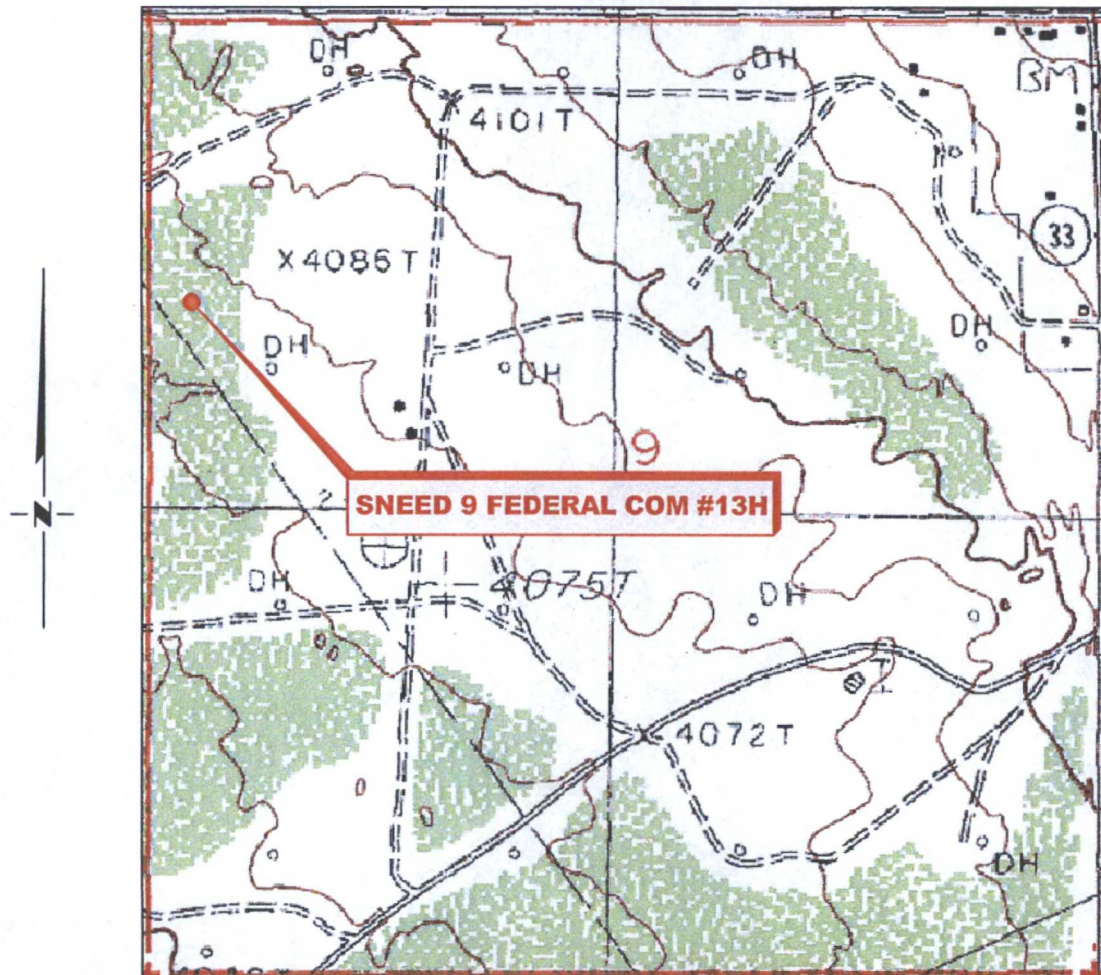
NO.	REVISION	DATE
JOB NO.: LS1504166		
DWG. NO.: 1504166VM		

RRC

308 W. BROADWAY ST., HOBBS, NM 88240 (575) 964-8200

SCALE: NTS
DATE: 4-28-2015
SURVEYED BY: GB/ER
DRAWN BY: CMJ
APPROVED BY: RMH
SHEET : 1 OF 1

LOCATION VERIFICATION MAP



*SECTION 9, TWP. 17 SOUTH, RGE. 32 EAST,
N. M. P. M., LEA CO., NEW MEXICO*

OPERATOR: COG Operating, LLC
LEASE: Sneed 9 Federal Com
WELL NO.: 13H
ELEVATION: 4076'

LOCATION: 1513' FNL & 229' FWL
CONTOUR INTERVAL: 10'
USGS TOPO. SOURCE MAP:
Maljamar, NM (P. E. 1985)

Firm No.: TX 10193838 NM 4655451

Copyright 2015 - All Rights Reserved

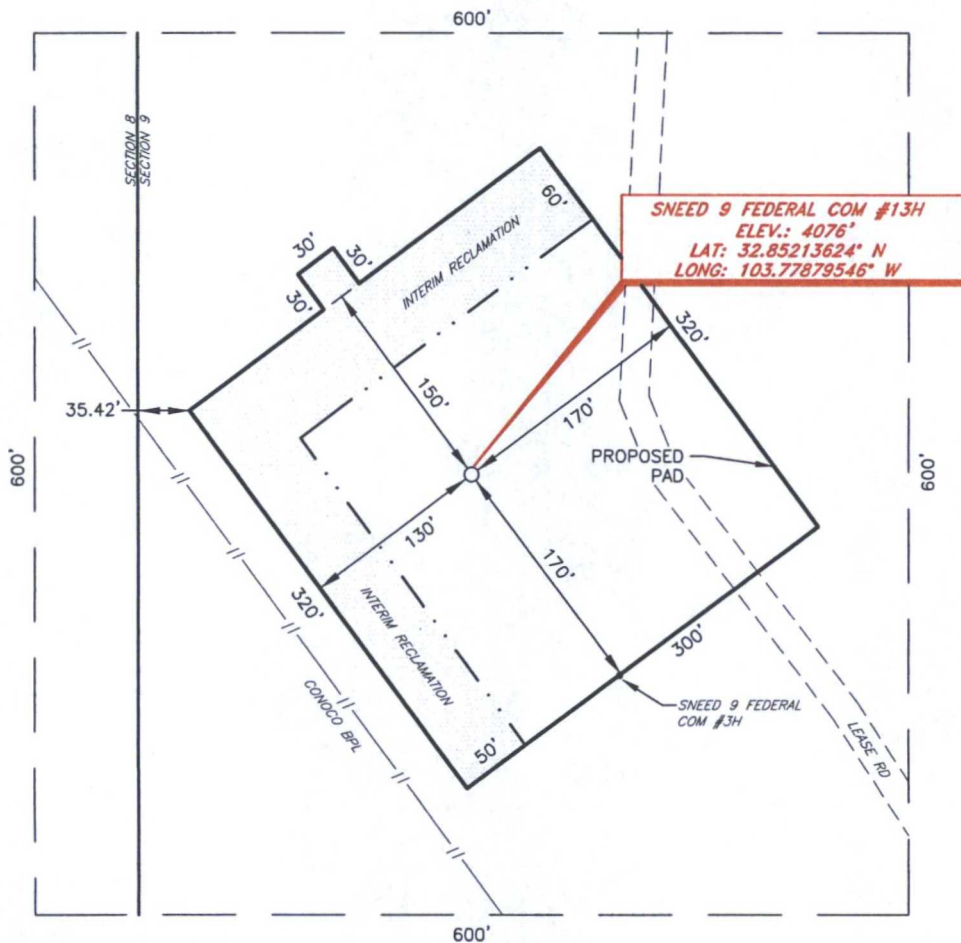
NO.	REVISION	DATE
JOB NO.: LS1504166		
DWG. NO.: 1504166LVM		

RRC

308 W. BROADWAY ST., HOBBS, NM 88240 (575) 964-8200

SCALE: 1" = 1000'
DATE: 4-28-2015
SURVEYED BY: GB/ER
DRAWN BY: CMJ
APPROVED BY: RMH
SHEET : 1 OF 1

COG OPERATING, LLC
 INTERIM RECLAMATION
 SNEED 9 FEDERAL COM #13H
 (1513' FNL & 229' FWL)
 SECTION 9, T17S, R32E
 N. M. P. M., LEA CO., NEW MEXICO



From the intersection U. S. Hwy. 82 and L-126 (Maljamar Road);
 Go South on L-126 approx. 0.6 miles to a lease road on the right;
 Turn right on lease road and go Southwest approx. 0.8 miles to a lease road on the right;
 Turn right and go North approx. 0.5 miles to a lease road on the left;
 Turn left and go West for approx. 0.2 miles to a lease road on the right;
 Turn right and go Northwest approx. 0.1 miles.
 Location is approx. 100 feet West of lease road.

SCALE: 1" = 100'
 0 50 100
 BEARINGS ARE
 NAD 27 GRID - NM EAST
 DISTANCES ARE
 GROUND.

Firm No.: TX 10193838 NM 4655451

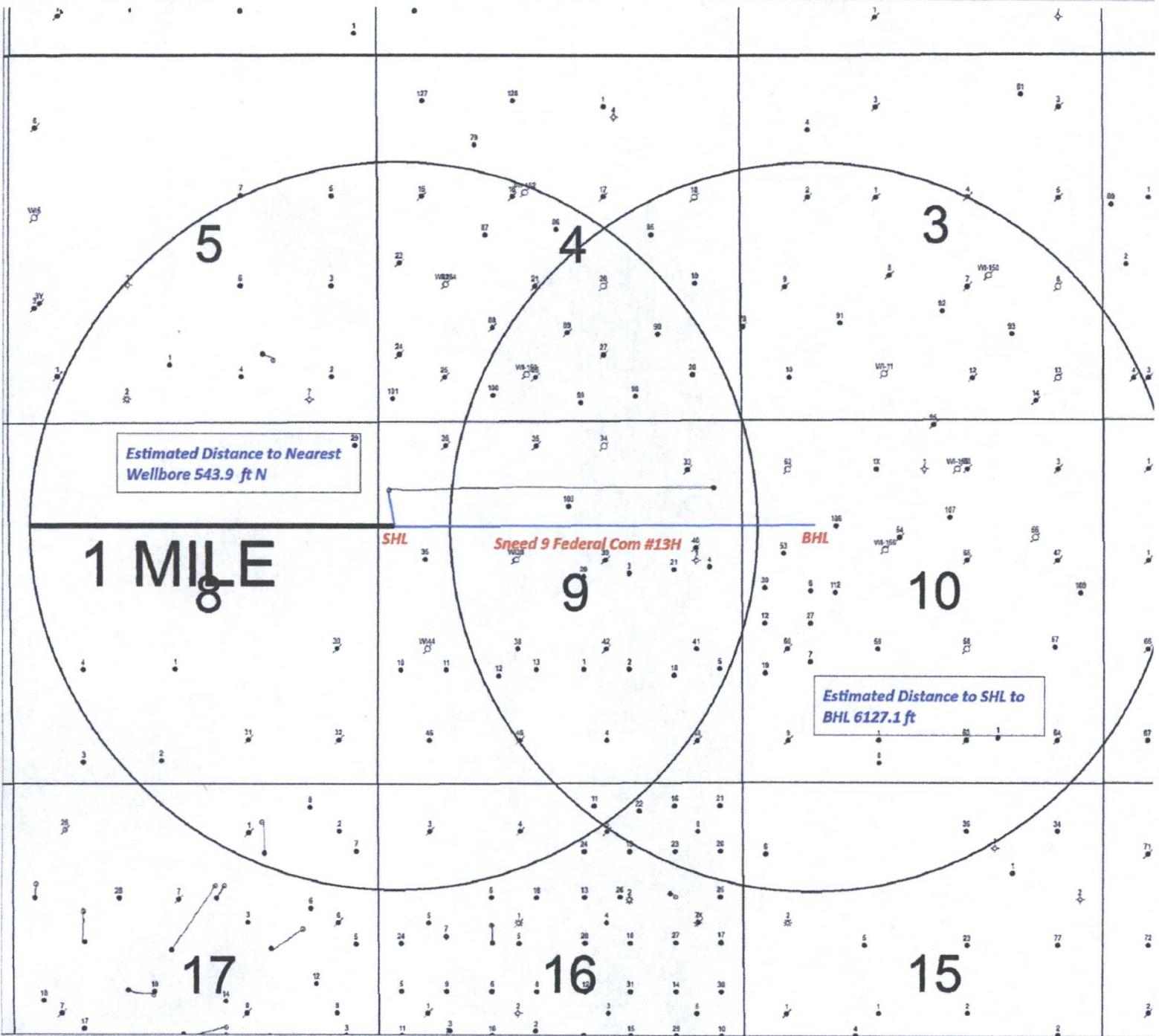
Copyright 2015 - All Rights Reserved


NO.	REVISION	DATE
JOB NO.:	LS1504166	
DWG. NO.:	1504166REC	

RRC

308 W. BROADWAY ST., HOBBS, NM 88240 (575) 964-8200

SCALE: 1" = 100'
DATE: 4-28-2015
SURVEYED BY: GB/ER
DRAWN BY: CMJ
APPROVED BY: RMH
SHEET : 1 OF 1



	
SENM Shelf Area Sneed 9 Federal Com 13H	
SEC. 9, T17S - R32E SHL 1513 FNL 229 FWL, UNIT E SEC. 10, T17S - R32E SHL 1650 FNL 988 FWL, UNIT E	
Author: ldm	Date: 18 May, 2015



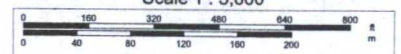
Data use subject to license.

© DeLorme. XMap® 7.

www.delorme.com



Scale 1 : 5,600



1" = 466.7 ft

Data Zoom 15-2