

District I  
1625 N. French Dr., Hobbs, NM 88240  
Phone: (575) 393-6161 Fax: (575) 393-0720  
District II  
811 S. First St., Artesia, NM 88210  
Phone: (575) 748-1283 Fax: (575) 748-9720  
District III  
1000 Rio Brazos Road, Aztec, NM 87410  
Phone: (505) 334-6178 Fax: (505) 334-6170  
District IV  
1220 S. St. Francis Dr., Santa Fe, NM 87505  
Phone: (505) 476-3460 Fax: (505) 476-3462

**HOBBS OCD** State of New Mexico  
Energy, Minerals & Natural Resources Department  
OIL CONSERVATION DIVISION  
1220 South St. Francis Dr.  
Santa Fe, NM 87505  
**RECEIVED**

Form C-102  
Revised August 1, 2011  
Submit one copy to appropriate  
District Office

☐ AMENDED REPORT

# WELL LOCATION AND ACREAGE DEDICATION PLAT

<sup>1</sup> API Number <b>30-025-43342</b>	<sup>2</sup> Pool Code <b>97903</b>	<sup>3</sup> Pool Name <b>WLC-025 G-08 5253235G; LWR BS</b>
<sup>4</sup> Property Code <b>316475</b>	<sup>5</sup> Property Name <b>JENNINGS 27 B2AP FED COM</b>	
<sup>7</sup> OGRID NO. <b>14744</b>	<sup>8</sup> Operator Name <b>MEWBOURNE OIL COMPANY</b>	
		<sup>6</sup> Well Number <b>2H</b>
		<sup>9</sup> Elevation <b>3400'</b>

## <sup>10</sup> Surface Location

UL or lot no.	Section	Township	Range	Lot Idn	Feet from the	North/South line	Feet From the	East/West line	County
<b>A</b>	<b>27</b>	<b>25S</b>	<b>32E</b>		<b>185</b>	<b>NORTH</b>	<b>660</b>	<b>EAST</b>	<b>LEA</b>

## <sup>11</sup> Bottom Hole Location If Different From Surface

UL or lot no.	Section	Township	Range	Lot Idn	Feet from the	North/South line	Feet from the	East/West line	County
<b>P</b>	<b>27</b>	<b>25S</b>	<b>32E</b>		<b>330</b>	<b>SOUTH</b>	<b>660</b>	<b>EAST</b>	<b>LEA</b>

<sup>12</sup> Dedicated Acres <b>160</b>	<sup>13</sup> Joint or Infill	<sup>14</sup> Consolidation Code	<sup>15</sup> Order No.
---	-------------------------------	----------------------------------	-------------------------

No allowable will be assigned to this completion until all interest have been consolidated or a non-standard unit has been approved by the division.

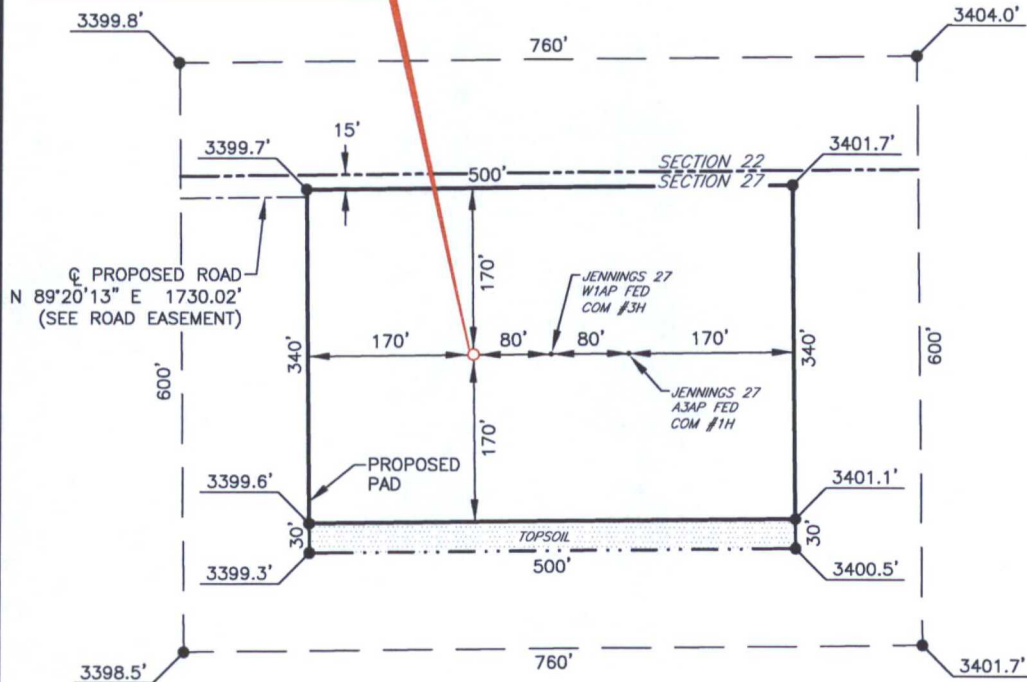
<p><sup>16</sup> (C) <b>GEODETIC DATA</b> NAD 27 GRID - NM EAST</p> <p><b>SURFACE LOCATION</b> N 403710.4 - E 709750.0 LAT: 32.10810430° N LONG: 103.65591979° W</p> <p><b>BOTTOM HOLE</b> N 398951.2 - E 709790.1</p> <p><b>CORNER DATA</b> NAD 27 GRID - NM EAST A: CALCULATED CORNER N 398575.2 - E 705114.2 B: FOUND BRASS CAP "1939" N 401214.8 - E 705094.4 C: FOUND BRASS CAP "1939" N 403854.9 - E 705072.0 D: FOUND BRASS CAP "1939" N 403871.6 - E 707742.9 E: FOUND BRASS CAP "1939" N 403903.1 - E 710407.2 F: FOUND BRASS CAP "1939" N 401281.5 - E 710445.3 G: FOUND BRASS CAP "1939" N 398629.1 - E 710450.6 H: FOUND BRASS CAP "1939" N 398597.5 - E 707781.4</p>		<p><b>DETAIL "A"</b></p> <p>3399.8' 760' 3404.0' 600' S. L. 3398.5' 3401.7'</p> <p><b>Project Area</b></p> <p><b>Producing Area</b></p>		<p><b>17 OPERATOR CERTIFICATION</b> I hereby certify that the information contained herein is true and complete to the best of my knowledge and belief, and that this organization either owns a working interest or unleased mineral interest in the land including the proposed bottom hole location or has a right to drill this well at this location pursuant to a contract with an owner of such a mineral or working interest, or to a voluntary pooling agreement or a compulsory pooling order heretofore entered by the division.</p> <p>Signature <b>BRADLEY BISHOP</b> Date <b>9-29-15</b> Printed Name E-mail Address</p>	
<p><b>18 SURVEYOR CERTIFICATION</b> I hereby certify that the well location shown on this plat was plotted from field notes of actual surveys made by me or under my supervision, and that the same is true and correct to the best of my belief.</p> <p><b>8-20-2015</b> Date of Survey Signature and Seal of Professional Surveyor <b>19680</b> Certificate Number</p>		<p><b>19680</b> Certificate Number</p>		<p><b>19680</b> Certificate Number</p>	



# MEWBOURNE OIL COMPANY

JENNINGS 27 B2AP FED COM #2H  
(185' FNL & 660' FEL)  
SECTION 27, T25S, R32E  
N. M. P. M., LEA COUNTY, NEW MEXICO

JENNINGS 27 B2AP FED COM #2H  
ELEV.: 3400'  
LAT: 32.10810430° N  
LONG: 103.65591979° W



## DIRECTIONS TO LOCATION

From the intersection of CR-1 (Orla Hwy.) and Pipeline Rd.  
Go North on CR-1 approx. 3.0 miles to a lease road on the right;  
Turn right and go East approx. 0.2 miles to a lease road on the left;  
Turn left and go North approx. 0.1 miles to a lease road on the right;  
Turn right and go East approx. 0.3 mile to a proposed road on the right;  
Turn right and go Southeast approx. 113 feet to a proposed road on the left;  
Turn left and go East approx. 0.4 miles to location on the right.

SCALE: 1" = 150'  
0 75 150

BEARINGS ARE  
NAD 27 GRID - NM EAST  
DISTANCES ARE GROUND

Firm No.: TX 10193838 NM 4655451

Copyright 2014 - All Rights Reserved

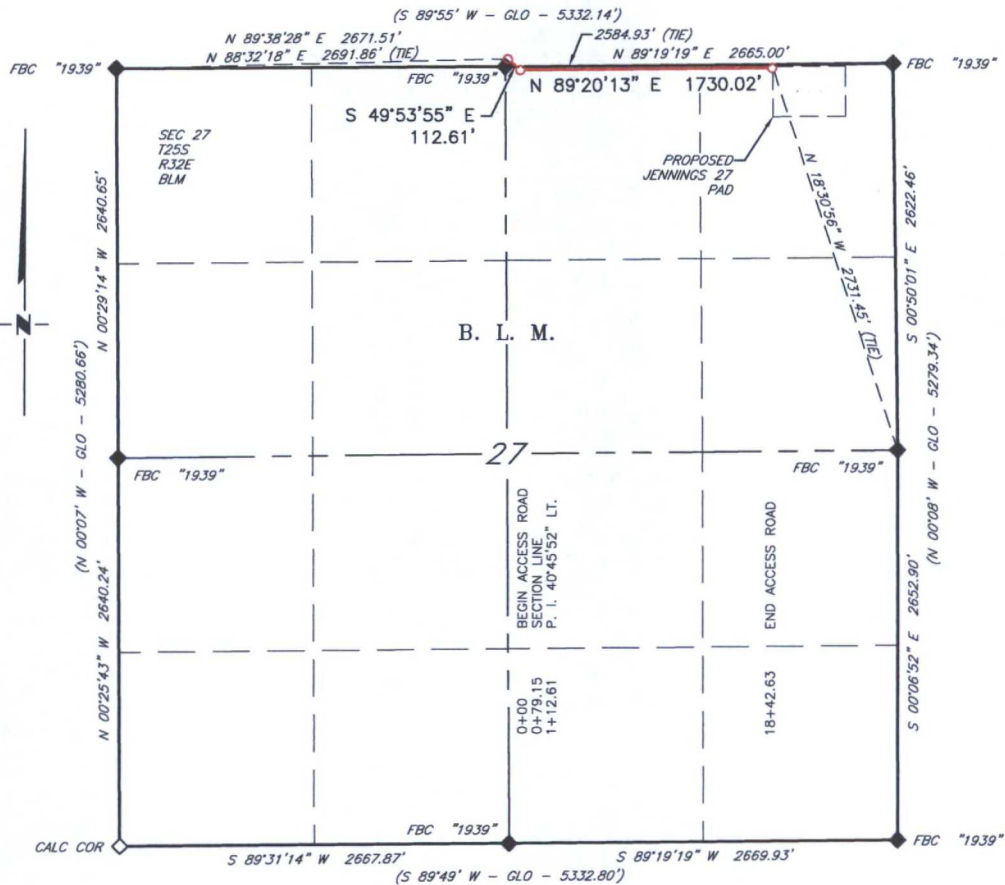
NO.	REVISION	DATE
JOB NO.:	LS1508444	
DWG. NO.:	1508444PAD	

# RRC

308 W. BROADWAY ST., HOBBS, NM 88240 (575) 964-8200

SCALE: 1" = 150'
DATE: 8-20-2015
SURVEYED BY: ML/ER
DRAWN BY: CMJ
APPROVED BY: RMH
SHEET : 1 OF 1

**MEWBOURNE OIL COMPANY  
PROPOSED ACCESS ROAD FOR THE  
JENNINGS 27 FED COM WELL LOCATIONS  
SECTIONS 22 & 27, T25S, R32E,  
N. M. P. M., LEA CO., NEW MEXICO**



SCALE: 1" = 1000'  
0 500' 1000'

BEARINGS ARE GRID NAD 27  
NM EAST  
DISTANCES ARE HORIZ. GROUND.

**LEGEND**

- ( ) RECORD DATA - GLO
- ◆ FOUND MONUMENT AS NOTED
- ◇ CALCULATED CORNER

— PROPOSED ACCESS ROAD

I, R. M. Howett, a N. M. Professional Surveyor, hereby certify that I prepared this plat from an actual survey made on the ground under my direct supervision, said survey and plat meet the Min. Stds. for Land Surveying in the State of N. M. and are true and correct to the best of my knowledge and belief.

*Robert M. Howett*  
Robert M. Howett NM PS 19680



Firm No.: TX 10193838 NM 4655451

Copyright 2014 - All Rights Reserved

NO.	REVISION	DATE
JOB NO.:	LS1508443	
DWG. NO.:	1508843RD	

**RRC**

308 W. BROADWAY ST., HOBBS, NM 88240 (575) 964-8200

SCALE: 1" = 1000'
DATE: 8-20-2015
SURVEYED BY: ML/ER
DRAWN BY: CMJ
APPROVED BY: RMH
SHEET : 1 OF 2

**MEWBOURNE OIL COMPANY  
PROPOSED ACCESS ROAD FOR THE  
JENNINGS 27 FED COM WELL LOCATIONS  
SECTIONS 22 & 27, T25S, R32E,  
N. M. P. M., LEA CO., NEW MEXICO**

DESCRIPTION

A strip of land 30 feet wide, being 1,842.63 feet or 111.674 rods in length, lying in Sections 22 & 27, Township 25 South, Range 32 East, N. M. P. M., Lea County, New Mexico, being 15 feet left and 15 feet right of the following described survey of a centerline across B. L. M. land:

BEGINNING at Engr. Sta. 0+00, a point in the Southeast quarter of Section 22, which bears N 88°32'18" E, 2,691.86 feet from a brass cap, stamped "1939", found for the Southwest corner of Section 22;

Thence S 49°53'55" E, 79.15 feet, to Engr. Sta. 0+79.15, a point on the South line of Section 22, which bears S 89°19'19" E, 2,584.93 feet from a brass cap, stamped "1939", found for the Southeast corner of Section 22;

Thence continuing into Section 27, S 49°53'55" E, 33.46 feet, to Engr. Sta. 1+12.61, a P. I. of 40°45'52" left;

Thence N 89°20'13" E, 1730.02 feet, to Engr. Sta. 18+42.63, the End of Survey, a point in the Northeast quarter of Section 27, which bears N 18°30'56" W 2,731.45 feet from a brass cap stamped "1939", found for the East quarter corner of Section 27.

Said strip of land contains 1.269 acres, more or less and is allocated by forties as follows:

SECTION 22

SW 1/4 SE 1/4	4.797	Rods	0.055	Acres
---------------	-------	------	-------	-------

SECTION 27

NW 1/4 NE 1/4	76.395	Rods	0.868	Acres
NE 1/4 NE 1/4	30.482	Rods	0.346	Acres

Firm No.: TX 10193838 NM 4655451

Copyright 2014 - All Rights Reserved

NO.	REVISION	DATE
JOB NO.:	LS1508443	
DWG. NO.:	1508843RD	

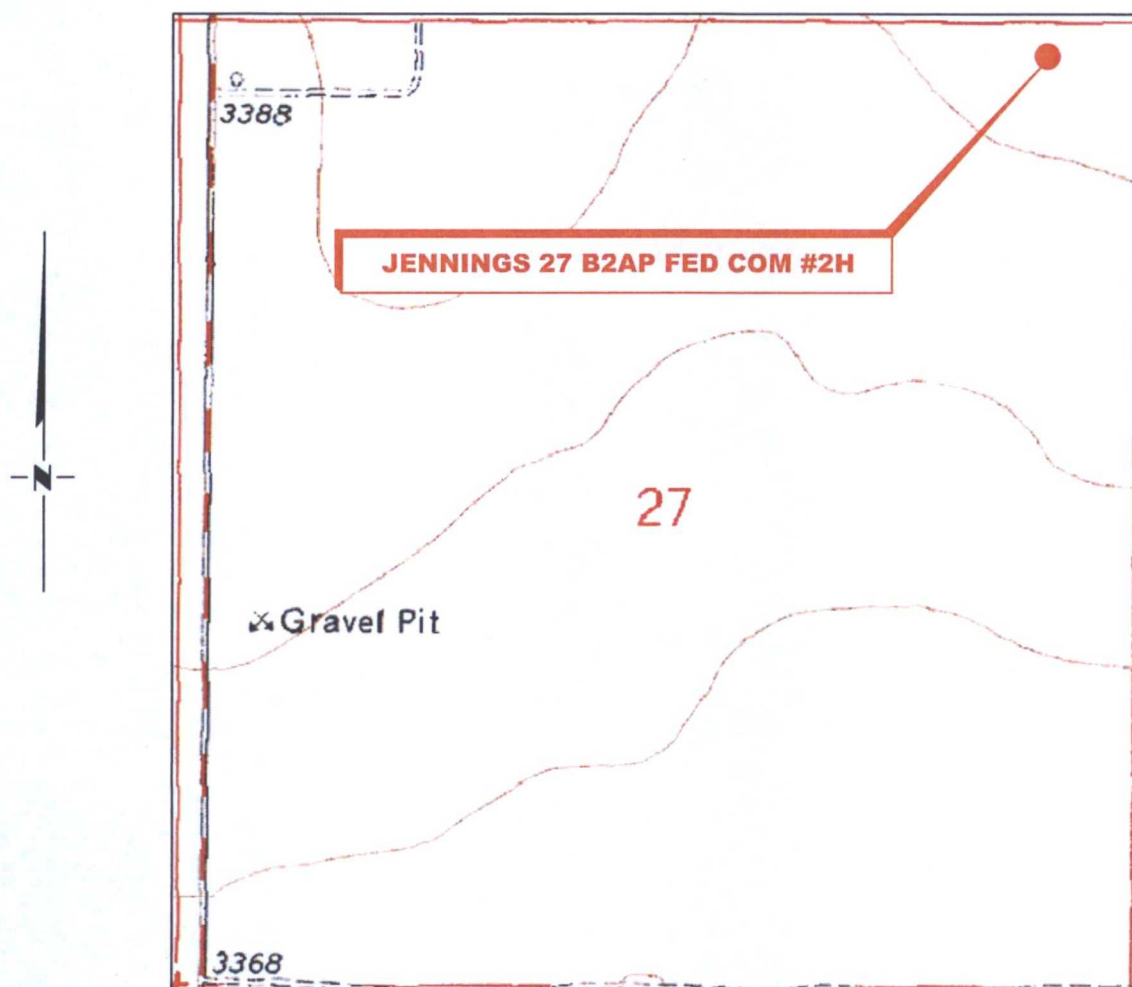
RRC

308 W. BROADWAY ST., HOBBS, NM 88240 (575) 964-8200

SCALE: 1" = 1000'
DATE: 8-20-2015
SURVEYED BY: ML/ER
DRAWN BY: CMJ
APPROVED BY: RMH
SHEET : 2 OF 2



# LOCATION VERIFICATION MAP



**SECTION 27, TWP. 25 SOUTH, RGE. 32 EAST,  
N. M. P. M., LEA CO., NEW MEXICO**

OPERATOR: Mewbourne Oil Company  
LEASE: Jennings 27 B2AP Fed Com  
WELL NO.: 2H  
ELEVATION: 3400'

LOCATION: 185' FNL & 660' FEL  
CONTOUR INTERVAL: 10'  
USGS TOPO. SOURCE MAP:  
Paduca Breaks West, NM (1973)

Firm No.: TX 10193838 NM 4655451

Copyright 2015 - All Rights Reserved

NO.	REVISION	DATE
JOB NO.: LS1508444		
DWG. NO.: 1508444LVM		

## RRC

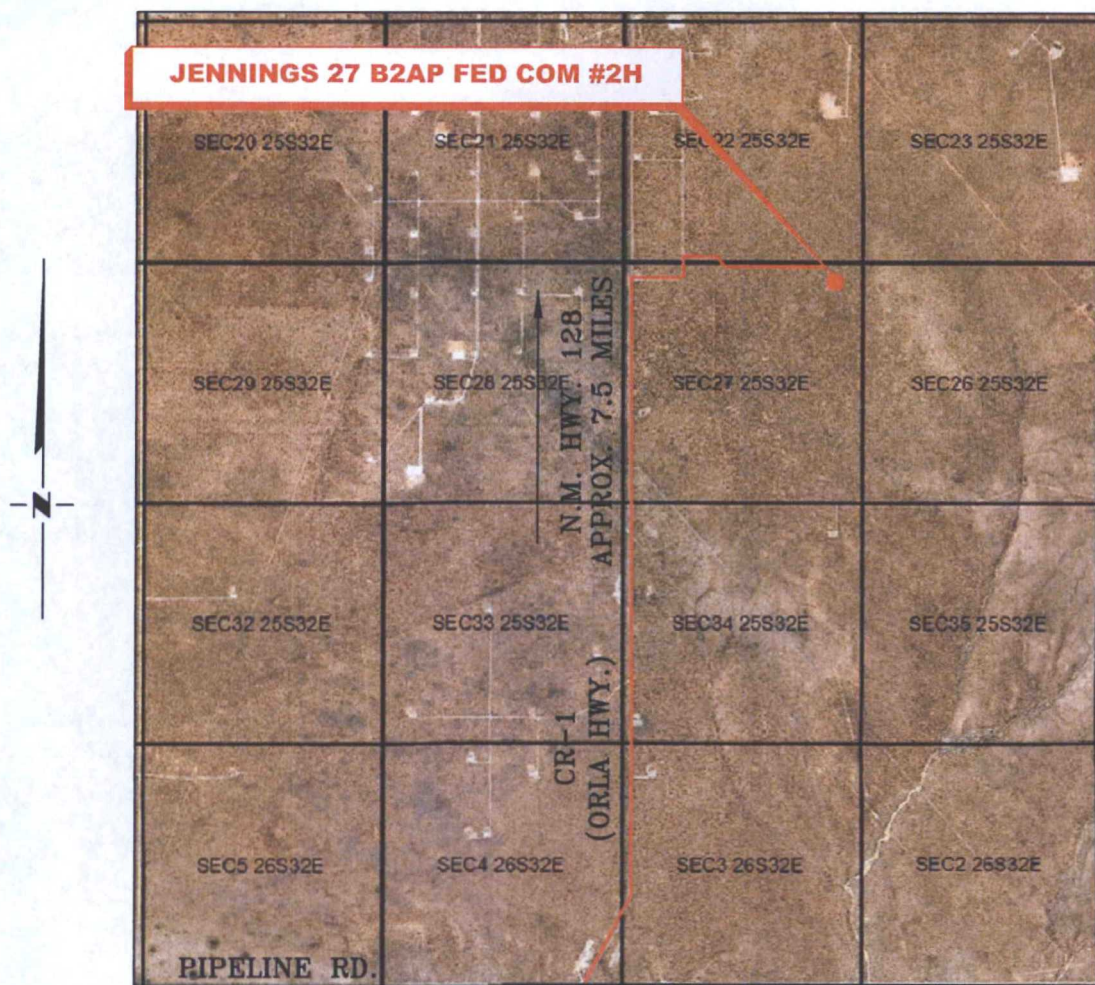
308 W. BROADWAY ST., HOBBS, NM 88240 (575) 964-8200

SCALE: 1000'
DATE: 8-20-2015
SURVEYED BY: ML/ER
DRAWN BY: CMJ
APPROVED BY: RMH
SHEET : 1 OF 1

"3E"

# VICINITY MAP

NOT TO SCALE



SECTION 27, TWP. 25 SOUTH, RGE. 32 EAST,  
N. M. P. M., LEA CO., NEW MEXICO

OPERATOR: Mewbourne Oil Company  
LEASE: Jennings 27 B2AP Fed Com  
WELL NO.: 2H

LOCATION: 185' FNL & 660' FEL  
ELEVATION: 3400'

Firm No.: TX 10193838 NM 4655451

Copyright 2014 - All Rights Reserved

NO.	REVISION	DATE
JOB NO.: LS1508444		
DWG. NO.: 1508444VM		

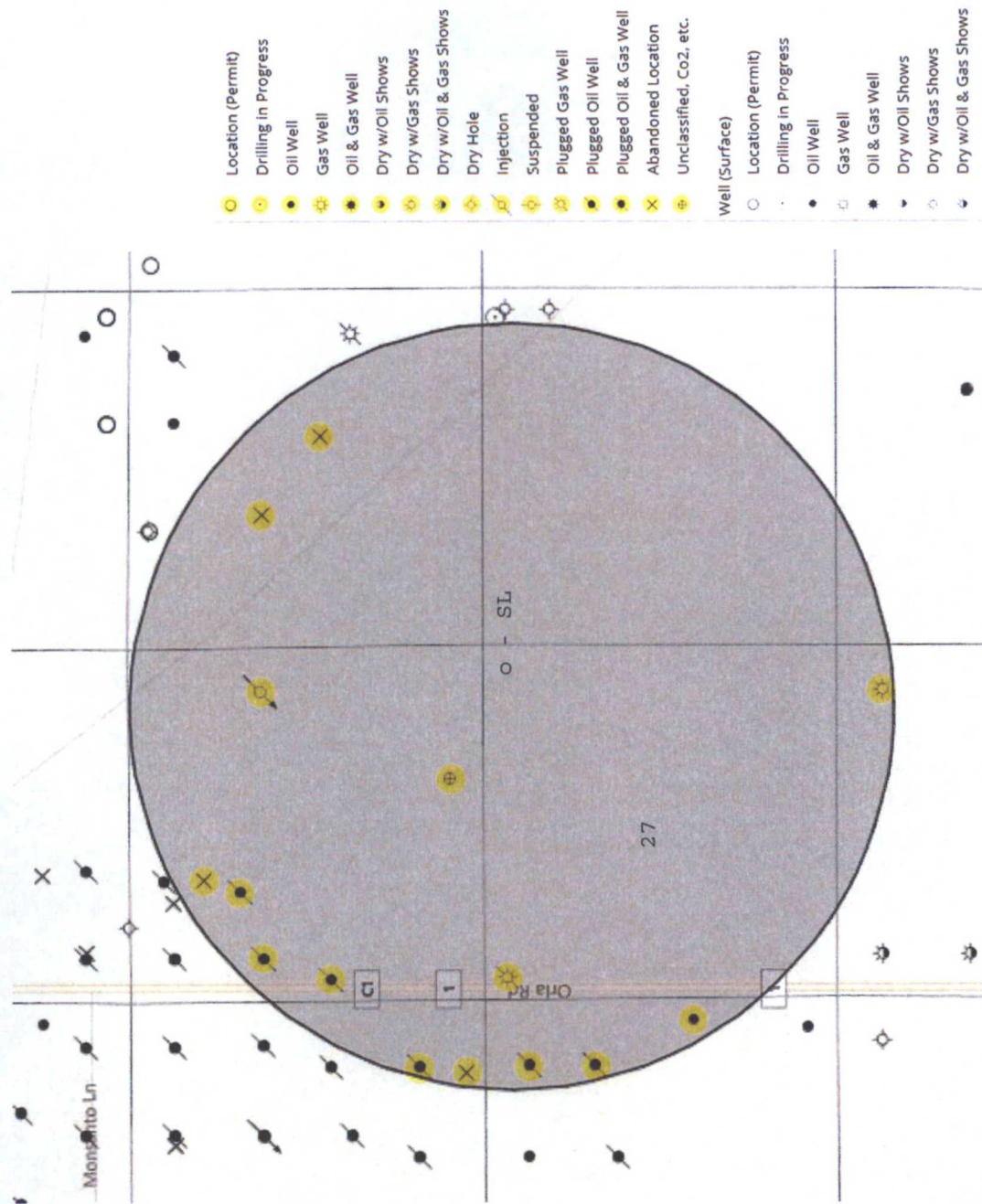
# RRC

308 W. BROADWAY ST., HOBBS, NM 88240 (575) 964-8200

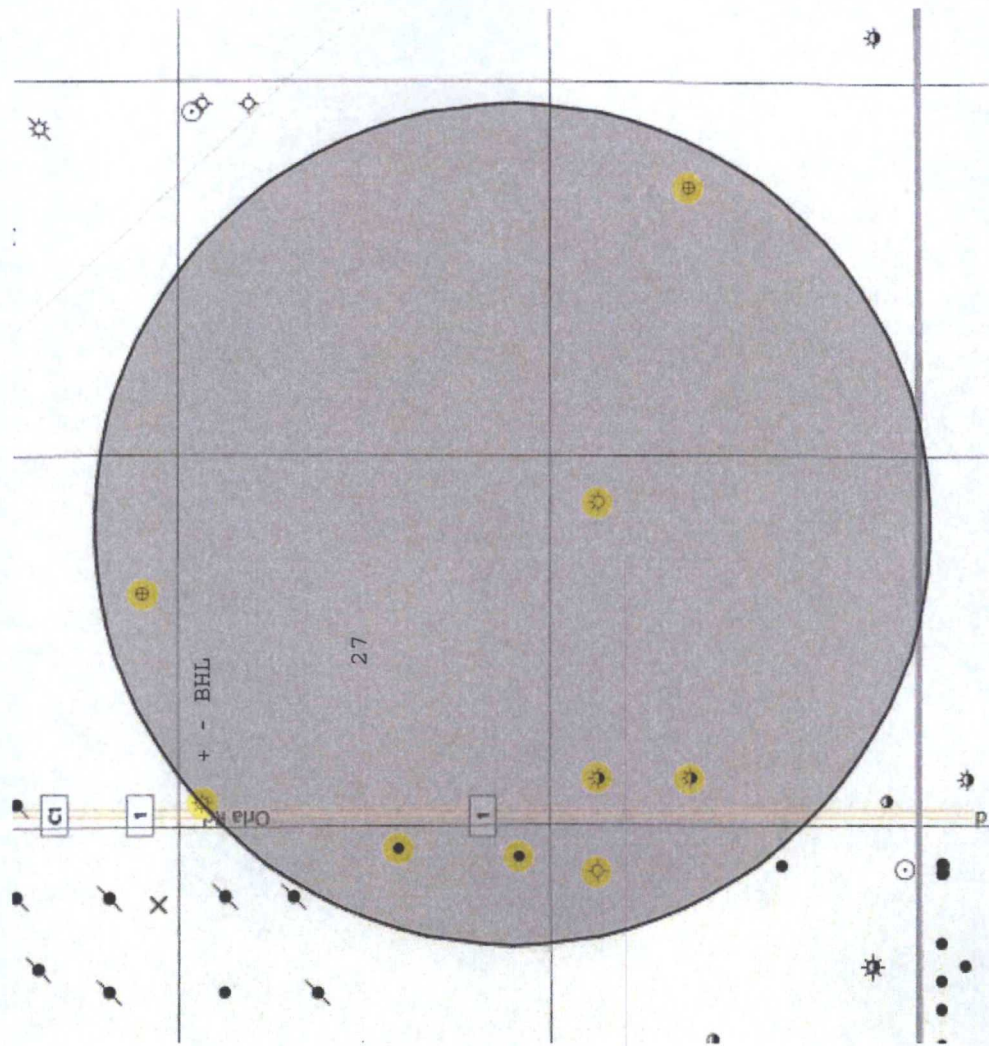
SCALE: NTS
DATE: 8-20-2015
SURVEYED BY: ML/ER
DRAWN BY: CMJ
APPROVED BY: RMH
SHEET : 1 OF 1



Exhibit "4" - SL - Jennings 27 B2AP Fed Com #2H



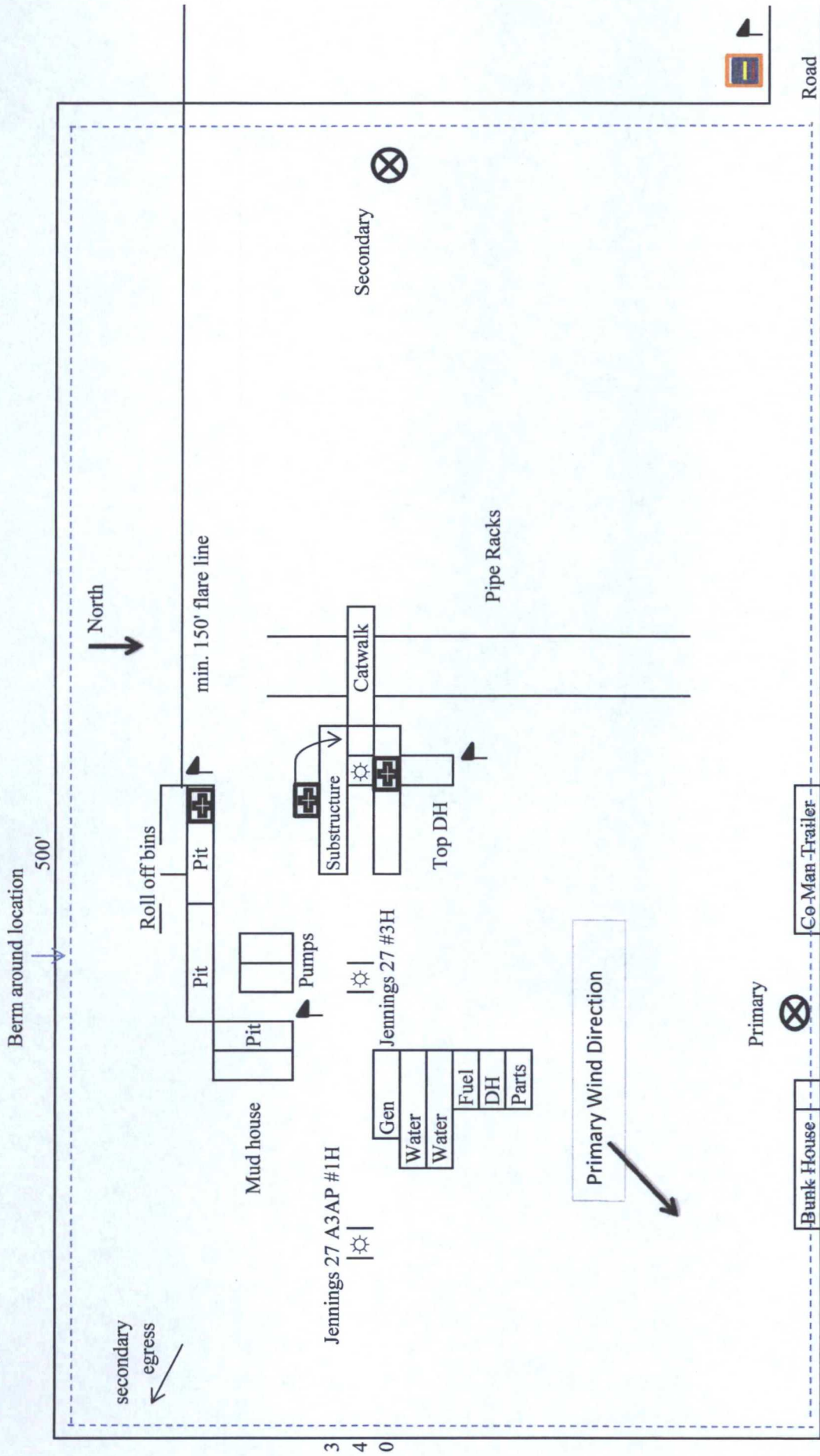
Edxhibit "4A" - BHL - Jennings 27 B2AP Fed Com #2H



- Location (Permit)
- Drilling in Progress
- Oil Well
- Gas Well
- Oil & Gas Well
- Dry w/Oil Shows
- Dry w/Gas Shows
- Dry w/Oil & Gas Shows
- Dry Hole
- Injection
- Suspended
- Plugged Gas Well
- Plugged Oil Well
- Plugged Oil & Gas Well
- Abandoned Location
- Unclassified, Co2, etc.
- Well (Surface)
- Location (Permit)
- Drilling in Progress
- Oil Well
- Gas Well
- Oil & Gas Well
- Dry w/Oil Shows
- Dry w/Gas Shows
- Dry w/Oil & Gas Shows



# H2S Diagram

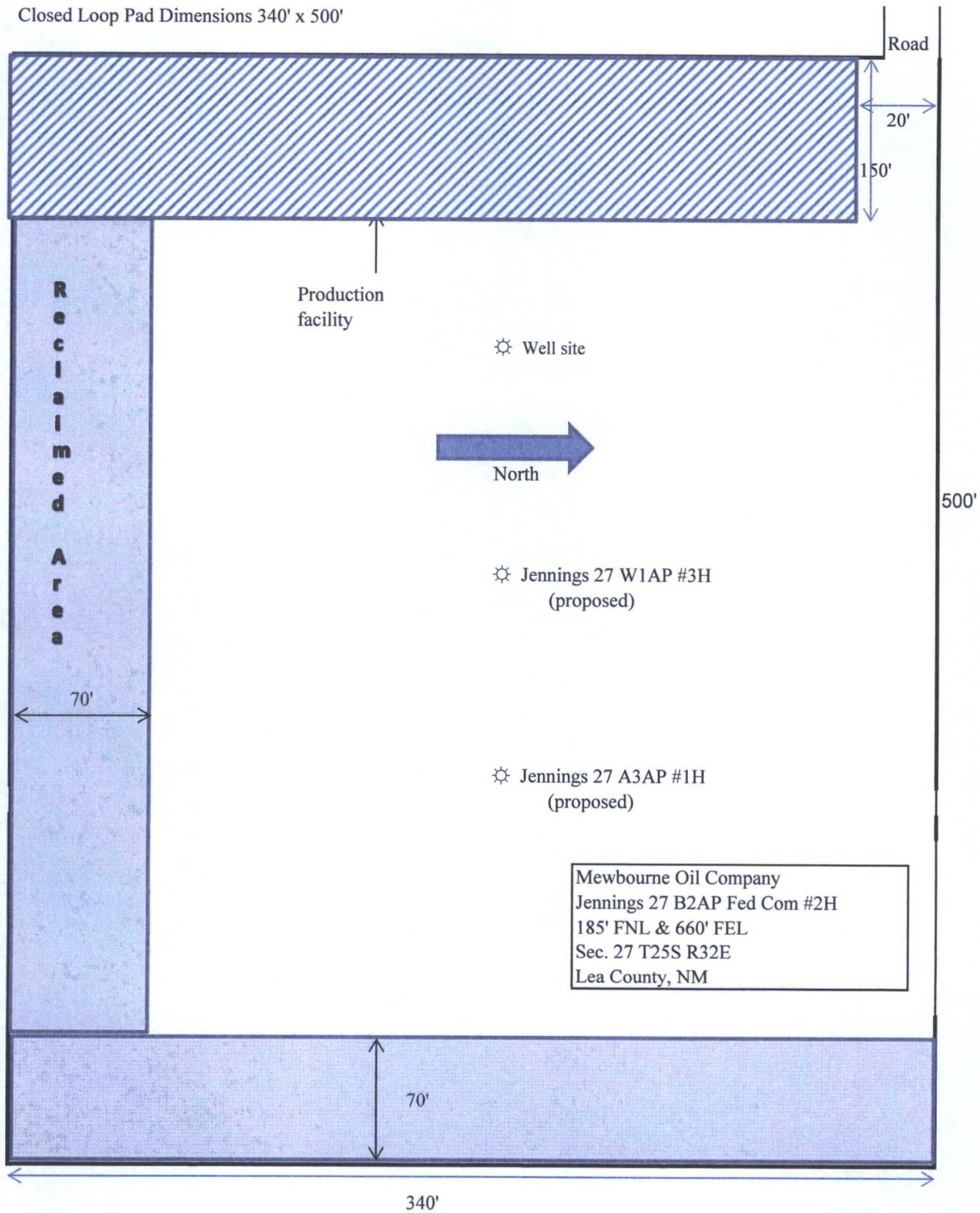


## Exhibit 5

Mewbourne Oil Company  
Jennings 27 B2AP Fed Com #2H  
185' FNL & 660' FEL  
Sec. 27 T25S R32E  
Lea County, NM

-  = Safety Stations
-  = H2S Monitors
-  = Wind Markers
-  = Warning Signs

Closed Loop Pad Dimensions 340' x 500'





**Form NM 8140-9**  
(March 2008)  
**United States Department of the Interior**  
**Bureau of Land Management**  
**New Mexico State Office**

**Permian Basin Cultural Resource Mitigation Fund**

The company shown below has agreed to contribute funding to the Permian Basin Cultural Resource Fund in lieu of being required to conduct a Class III survey for cultural resources associated with their project. This form verifies that the company has elected to have the Bureau of Land Management (BLM) follow the procedures specified within the Memorandum of Agreement (MOA) concerning improved strategies for managing historic properties within the Permian Basin, New Mexico, for the undertaking rather than the Protocol to meet the agency's Section 106 obligations.

Company Name: Mewbourne Oil Company

Address: PO Box 5270

Hobbs, NM 88241

**Project description:**

Location & Lease road for Jennings 27 B2AP Fed Com #2H

\_\_\_\_\_

\_\_\_\_\_

\_\_\_\_\_

\_\_\_\_\_

T. 25S , R. 32E , Section 27 NMPM, Lea County, New Mexico

Amount of contribution: \$ 1,599.00

Provisions of the MOA:

- A. No new Class III inventories are required of industry within the Project Area for those projects where industry elects to contribute to the mitigation fund.
- B. The amount of funds contributed was derived from the rate schedule established within Appendix B of the MOA. The amount of the funding contribution acknowledged on this form reflects those rates.
- C. The BLM will utilize the funding to carry out a program of mitigation at high-priority sites whose study is needed to answer key questions identified within the Regional Research Design.
- D. Donating to the fund is voluntary. Industry acknowledges that it is aware it has the right to pay for Class III survey rather than contributing to the mitigation fund, and that it must avoid or fund data recovery at those sites already recorded that are eligible for nomination to the National Register or whose eligibility is unknown and that any such payments are independent of the mitigation funds established by this MOA.
- E. Previously recorded archeological sites determined eligible for nomination to the National Register or whose eligibility remains undetermined must be avoided or mitigated.
- F. If any skeletal remains that might be human or funerary objects are discovered by any activities, the land-use applicant will cease activities in the area of discovery, protect the remains, and notify the BLM within 24 hours. The BLM will determine the appropriate treatment of the remains in consultation with culturally affiliated Indian Tribe(s) and lineal descendants. Applicants will be required to pay for treatment of the cultural items independent and outside of the mitigation fund.

  
\_\_\_\_\_  
Company-Authorized Officer

9.29.15  
\_\_\_\_\_  
Date

\_\_\_\_\_  
BLM-Authorized Officer

\_\_\_\_\_  
Date