

Leking, Geoffrey R, EMNRD

From: Fred Holmes [fred@etechnv.com]
Sent: Monday, September 28, 2009 3:35 PM
To: Leking, Geoffrey R, EMNRD
Cc: 'Brian Ashburn'; 'Shane Estep'
Subject: Whiting O&G Carlson Fed #2 Battery Spill
Attachments: Carlson Fed #2 Battery Assessment Pics 091609.pdf; Carlson Fed #2 Battery Assessment Pics 091609.pdf

Geoff:

Thanks for speaking with me today. Attached are the photographs from the spill at the Whiting Oil and Gas Corp., Carlson Federal No. 2 Tank Battery Release which occurred on 09/01/09. You should already have a C-141 on this event. Also attached is a map showing the location of the site.

The vertical depth of the release is approximately 2-6 inches and with the exception of a small area directly outside the battery, confined to the containment berms around the battery. The area outside the battery containment is approximately ½ inches vertical.

Since this is largely a crude oil spill, Whiting would like to blend and treat with biological additives down to an initial level 5000 mg/kg TPH. Over time, the biological additives should assist in further reduction of hydrocarbons. Once the initial treatment is completed, a report along with supportive documentation will be submitted to your office. I think you will find that the location of the site and the relationship of the depth to groundwater (greater than 250 ft.) supports this approach.

Please let me know if you concur with this and I will get it started.

Thanks Again

Fred Holmes

Etech Environmental & Safety Solutions, Inc.

P.O. Box 8469

Midland, Texas 79708-8469

Phone: 432-563-2200

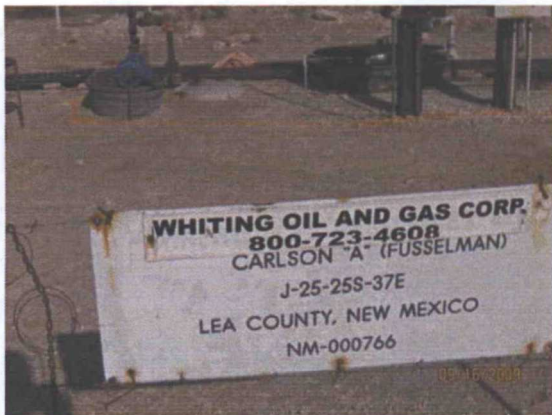
Fax: 432-563-2213

E-mail: fred@etechnv.com

CONFIDENTIAL

This e-mail message, including any attachments, is intended solely for the individual(s) named above. It contains confidential and/or proprietary information. If you are not the intended recipient, please do not read, copy or distribute it or any information it contains. Please immediately notify the sender by return mail and delete it.

This inbound email has been scanned for malicious software and transmitted safely to you using Webroot Email Security.



IMG_0809



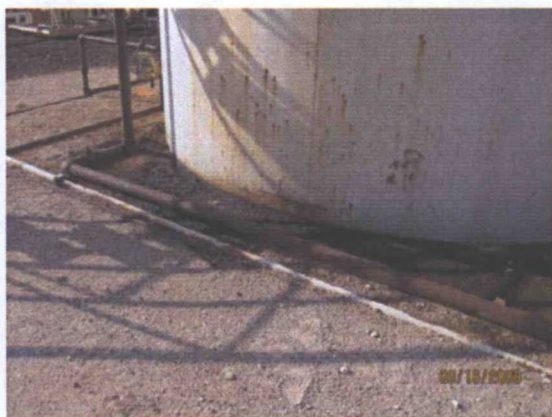
IMG_0811



IMG_0812



IMG_0813



IMG_0815



IMG_0816



IMG_0817



IMG_0818



IMG_0819



IMG_0821



IMG_0823



IMG_0824



IMG_0829



IMG_0830



IMG_0831



IMG_0832