

Request for Variance

ConocoPhillips Company

Rig: If drilled with H&P 486

Date: 7/11/2014

Request:

ConocoPhillips Company respectfully requests a variance to install a flexible choke line instead of a straight choke line prescribed in the Onshore Order No. 2, III.A.2.b Minimum standards and enforcement provisions for choke manifold equipment. This request is made under the provision of Onshore Order No. 2, IV Variances from Minimum Standard. The rig to be used to drill this well is equipped with a flexible choke line if the requested variance is approved and determined that the proposed alternative meets the objectives of the applicable minimum standards.

Justifications:

The applicability of the flexible choke line will reduce the number of target tees required to make up from the choke valve to the choke manifold. This configuration will facilitate ease of rig up and BOPE Testing.

Attachments:

- Attachment # 1 Specification from Manufacturer
- Attachment # 2 Mill & Test Certification from Manufacturer

Contact Information:

Program prepared by:

Jason A. Levinson

Drilling Engineer, ConocoPhillips Company

Phone (281) 206-5335

Cell (281) 682-2783

Date: 05 February 2014

Attachment # 1

CONTITECH RUBBER Industrial Kft.	No: QC-DB- 45 / 2012
	Page: 9 / 50



Hose Data Sheet

CRI Order No.	516273
Customer	ContiTech Beattie Co.
Customer Order No	PO5438 STOCK
Item No.	3
Hose Type	Flexible Hose
Standard	API SPEC 16 C
Inside dia in inches	3
Length	35 ft
Type of coupling one end	FLANGE 4 1/16" API SPEC 6A TYPE 6BX FOR 10000 PSIBX155 RING GROOVE
Type of coupling other end	FLANGE 4 1/16" API SPEC 6A TYPE 6BX FOR 10000 PSI BX155 RING GROOVE
H2S service NACE MR0175	Yes
Working Pressure	10 000 psi
Design Pressure	10 000 psi
Test Pressure	15 000 psi
Safety Factor	2,25
Marking	USUAL PHOENIX
Cover	NOT FIRE RESISTANT
Outside protection	St. steel outer wrap
Internal stripwound tube	No
Lining	OIL RESISTANT
Safety clamp	No
Lifting collar	No
Element C	No
Safety chain	No
Safety wire rope	No
Max. design temperature [°C]	100
Min. design temperature [°C]	-20
MBR operating [m]	1,60
MBR storage [m]	1,40
Type of packing	WOODEN CRATE ISPM-15

Attachment # 2



QC-DB- 45/2012

Page: 7/50

Fluid Technology

Quality Document

QUALITY CONTROL INSPECTION AND TEST CERTIFICATE				CERT. N°: 184	
PURCHASER: ContiTech Beattie Co.				P.O. N°: 005438	
CONTITECH ORDER N°: 516273		HOSE TYPE: 3" ID Choke and Kill Hose			
HOSE SERIAL N°: 61477		NOMINAL / ACTUAL LENGTH: 10,67 m / 10,71 m			
W.P. 68,9 MPa 10000 psi		T.P. 103,4 MPa 15000 psi		Duration: 60 min.	
Pressure test with water at ambient temperature <p style="text-align: center;">See attachment. (1 page)</p>					
↑ 10 mm = 10 Min. → 10 mm = 20 MPa					
COUPLINGS Type		Serial N°		Quality	
3" coupling with		10178 10173		AISI 4130	
4 1/16" 10K API Flange end				AISI 4130	
				20231	
				33051	
NOT DESIGNED FOR WELL TESTING				API Spec 16 C	
				Temperature rate: "B"	
All metal parts are flawless					
WE CERTIFY THAT THE ABOVE HOSE HAS BEEN MANUFACTURED IN ACCORDANCE WITH THE TERMS OF THE ORDER INSPECTED AND PRESSURE TESTED AS ABOVE WITH SATISFACTORY RESULT.					
STATEMENT OF CONFORMITY: We hereby certify that the above items/equipment supplied by us are in conformity with the terms, conditions and specifications of the above Purchaser Order and that these items/equipment were fabricated inspected and tested in accordance with the referenced standards, codes and specifications and meet the relevant acceptance criteria and design requirements.					
COUNTRY OF ORIGIN HUNGARY/EU					
Date:		Inspector		Quality Control	
30. January 2012.				ContiTech Rubber Industrial Kft. Quality Control Dept. (H) <i>[Signature]</i>	

ContiTech Rubber Industrial Kft.
 Budapest 110, Szeged 110/28
 PO Box 162 Szeged H-6701
 Hungary

Phone: +36 62 555 737
 Fax: +36 62 555 736
 e-mail: info@industrial.kft.hu
 Internet: www.contitech.hu

The Court of Commercial County as
 Registry Court
 Registry Court No. 11/05-10-000502
 EV 147 H. 14/11 14/12/2012

Bank data
 Commercial Bank
 Budapest
 11201008-20030003-00000000

ATTACHMENT OF QUALITY CONTROL INSPECTION AND TEST CERTIFICATE

No: 182, 184, 185

Page: 1 / 1


 JACH
 CoastTech Rubber
 Industrial Kft.
 Quality Control Dept.
 (0)

ITEM NO.	QTY	UNIT	DESCRIPTION	TEST METHOD	TEST RESULT	REMARKS
1	100	kg	10m-a-10.5	10m-a-10.5	10m-a-10.5	
2	100	kg	10m-a-10.5	10m-a-10.5	10m-a-10.5	
3	100	kg	10m-a-10.5	10m-a-10.5	10m-a-10.5	
4	100	kg	10m-a-10.5	10m-a-10.5	10m-a-10.5	
5	100	kg	10m-a-10.5	10m-a-10.5	10m-a-10.5	
6	100	kg	10m-a-10.5	10m-a-10.5	10m-a-10.5	
7	100	kg	10m-a-10.5	10m-a-10.5	10m-a-10.5	
8	100	kg	10m-a-10.5	10m-a-10.5	10m-a-10.5	
9	100	kg	10m-a-10.5	10m-a-10.5	10m-a-10.5	
10	100	kg	10m-a-10.5	10m-a-10.5	10m-a-10.5	
11	100	kg	10m-a-10.5	10m-a-10.5	10m-a-10.5	
12	100	kg	10m-a-10.5	10m-a-10.5	10m-a-10.5	
13	100	kg	10m-a-10.5	10m-a-10.5	10m-a-10.5	
14	100	kg	10m-a-10.5	10m-a-10.5	10m-a-10.5	
15	100	kg	10m-a-10.5	10m-a-10.5	10m-a-10.5	
16	100	kg	10m-a-10.5	10m-a-10.5	10m-a-10.5	
17	100	kg	10m-a-10.5	10m-a-10.5	10m-a-10.5	
18	100	kg	10m-a-10.5	10m-a-10.5	10m-a-10.5	
19	100	kg	10m-a-10.5	10m-a-10.5	10m-a-10.5	
20	100	kg	10m-a-10.5	10m-a-10.5	10m-a-10.5	
21	100	kg	10m-a-10.5	10m-a-10.5	10m-a-10.5	
22	100	kg	10m-a-10.5	10m-a-10.5	10m-a-10.5	
23	100	kg	10m-a-10.5	10m-a-10.5	10m-a-10.5	
24	100	kg	10m-a-10.5	10m-a-10.5	10m-a-10.5	
25	100	kg	10m-a-10.5	10m-a-10.5	10m-a-10.5	
26	100	kg	10m-a-10.5	10m-a-10.5	10m-a-10.5	
27	100	kg	10m-a-10.5	10m-a-10.5	10m-a-10.5	
28	100	kg	10m-a-10.5	10m-a-10.5	10m-a-10.5	
29	100	kg	10m-a-10.5	10m-a-10.5	10m-a-10.5	
30	100	kg	10m-a-10.5	10m-a-10.5	10m-a-10.5	
31	100	kg	10m-a-10.5	10m-a-10.5	10m-a-10.5	
32	100	kg	10m-a-10.5	10m-a-10.5	10m-a-10.5	
33	100	kg	10m-a-10.5	10m-a-10.5	10m-a-10.5	
34	100	kg	10m-a-10.5	10m-a-10.5	10m-a-10.5	
35	100	kg	10m-a-10.5	10m-a-10.5	10m-a-10.5	
36	100	kg	10m-a-10.5	10m-a-10.5	10m-a-10.5	
37	100	kg	10m-a-10.5	10m-a-10.5	10m-a-10.5	
38	100	kg	10m-a-10.5	10m-a-10.5	10m-a-10.5	
39	100	kg	10m-a-10.5	10m-a-10.5	10m-a-10.5	
40	100	kg	10m-a-10.5	10m-a-10.5	10m-a-10.5	
41	100	kg	10m-a-10.5	10m-a-10.5	10m-a-10.5	
42	100	kg	10m-a-10.5	10m-a-10.5	10m-a-10.5	
43	100	kg	10m-a-10.5	10m-a-10.5	10m-a-10.5	
44	100	kg	10m-a-10.5	10m-a-10.5	10m-a-10.5	
45	100	kg	10m-a-10.5	10m-a-10.5	10m-a-10.5	
46	100	kg	10m-a-10.5	10m-a-10.5	10m-a-10.5	
47	100	kg	10m-a-10.5	10m-a-10.5	10m-a-10.5	
48	100	kg	10m-a-10.5	10m-a-10.5	10m-a-10.5	
49	100	kg	10m-a-10.5	10m-a-10.5	10m-a-10.5	
50	100	kg	10m-a-10.5	10m-a-10.5	10m-a-10.5	
51	100	kg	10m-a-10.5	10m-a-10.5	10m-a-10.5	
52	100	kg	10m-a-10.5	10m-a-10.5	10m-a-10.5	
53	100	kg	10m-a-10.5	10m-a-10.5	10m-a-10.5	
54	100	kg	10m-a-10.5	10m-a-10.5	10m-a-10.5	
55	100	kg	10m-a-10.5	10m-a-10.5	10m-a-10.5	
56	100	kg	10m-a-10.5	10m-a-10.5	10m-a-10.5	
57	100	kg	10m-a-10.5	10m-a-10.5	10m-a-10.5	
58	100	kg	10m-a-10.5	10m-a-10.5	10m-a-10.5	
59	100	kg	10m-a-10.5	10m-a-10.5	10m-a-10.5	
60	100	kg	10m-a-10.5	10m-a-10.5	10m-a-10.5	
61	100	kg	10m-a-10.5	10m-a-10.5	10m-a-10.5	
62	100	kg	10m-a-10.5	10m-a-10.5	10m-a-10.5	
63	100	kg	10m-a-10.5	10m-a-10.5	10m-a-10.5	
64	100	kg	10m-a-10.5	10m-a-10.5	10m-a-10.5	
65	100	kg	10m-a-10.5	10m-a-10.5	10m-a-10.5	
66	100	kg	10m-a-10.5	10m-a-10.5	10m-a-10.5	
67	100	kg	10m-a-10.5	10m-a-10.5	10m-a-10.5	
68	100	kg	10m-a-10.5	10m-a-10.5	10m-a-10.5	
69	100	kg	10m-a-10.5	10m-a-10.5	10m-a-10.5	
70	100	kg	10m-a-10.5	10m-a-10.5	10m-a-10.5	
71	100	kg	10m-a-10.5	10m-a-10.5	10m-a-10.5	
72	100	kg	10m-a-10.5	10m-a-10.5	10m-a-10.5	
73	100	kg	10m-a-10.5	10m-a-10.5	10m-a-10.5	
74	100	kg	10m-a-10.5	10m-a-10.5	10m-a-10.5	
75	100	kg	10m-a-10.5	10m-a-10.5	10m-a-10.5	
76	100	kg	10m-a-10.5	10m-a-10.5	10m-a-10.5	
77	100	kg	10m-a-10.5	10m-a-10.5	10m-a-10.5	
78	100	kg	10m-a-10.5	10m-a-10.5	10m-a-10.5	
79	100	kg	10m-a-10.5	10m-a-10.5	10m-a-10.5	
80	100	kg	10m-a-10.5	10m-a-10.5	10m-a-10.5	
81	100	kg	10m-a-10.5	10m-a-10.5	10m-a-10.5	
82	100	kg	10m-a-10.5	10m-a-10.5	10m-a-10.5	
83	100	kg	10m-a-10.5	10m-a-10.5	10m-a-10.5	
84	100	kg	10m-a-10.5	10m-a-10.5	10m-a-10.5	
85	100	kg	10m-a-10.5	10m-a-10.5	10m-a-10.5	
86	100	kg	10m-a-10.5	10m-a-10.5	10m-a-10.5	
87	100	kg	10m-a-10.5	10m-a-10.5	10m-a-10.5	
88	100	kg	10m-a-10.5	10m-a-10.5	10m-a-10.5	
89	100	kg	10m-a-10.5	10m-a-10.5	10m-a-10.5	
90	100	kg	10m-a-10.5	10m-a-10.5	10m-a-10.5	
91	100	kg	10m-a-10.5	10m-a-10.5	10m-a-10.5	
92	100	kg	10m-a-10.5	10m-a-10.5	10m-a-10.5	
93	100	kg	10m-a-10.5	10m-a-10.5	10m-a-10.5	
94	100	kg	10m-a-10.5	10m-a-10.5	10m-a-10.5	
95	100	kg	10m-a-10.5	10m-a-10.5	10m-a-10.5	
96	100	kg	10m-a-10.5	10m-a-10.5	10m-a-10.5	
97	100	kg	10m-a-10.5	10m-a-10.5	10m-a-10.5	
98	100	kg	10m-a-10.5	10m-a-10.5	10m-a-10.5	
99	100	kg	10m-a-10.5	10m-a-10.5	10m-a-10.5	
100	100	kg	10m-a-10.5	10m-a-10.5	10m-a-10.5	

Request for Variance

ConocoPhillips Company

Rig: If drilled with H&P 453

Date: 7/11/2014

Request:

ConocoPhillips Company respectfully requests a variance to install a flexible choke line instead of a straight choke line prescribed in the Onshore Order No. 2, III.A.2.b Minimum standards and enforcement provisions for choke manifold equipment. This request is made under the provision of Onshore Order No. 2, IV Variances from Minimum Standard. The rig to be used to drill this well is equipped with a flexible choke line if the requested variance is approved and determined that the proposed alternative meets the objectives of the applicable minimum standards.

Justifications:

The applicability of the flexible choke line will reduce the number of target tees required to make up from the choke valve to the choke manifold. This configuration will facilitate ease of rig up and BOPE Testing.

Attachments:

- Attachment # 1 Specification from Manufacturer
- Attachment # 2 Mill & Test Certification from Manufacturer

Contact Information:

Program prepared by:
Jason A. Levinson
Drilling Engineer, ConocoPhillips Company
Phone (281) 206-5335
Cell (281) 682-2783
Date: 05 February 2014

Attachment # 1

CONTITECH RUBBER Industrial Kft.	No: QC-DB- 45 / 2012
	Page: 9 / 50



Hose Data Sheet

CRI Order No.	516273
Customer	ContiTech Beattie Co.
Customer Order No	PD5438 STOCK
Item No.	3
Hose Type	Flexible Hose
Standard	API SPEC 16 C
Inside dia in inches	3
Length	35 ft
Type of coupling one end	FLANGE 4 1/16" API SPEC 6A TYPE 6BX FOR 10000 PSIBX155 RING GROOVE
Type of coupling other end	FLANGE 4 1/16" API SPEC 6A TYPE 6BX FOR 10000 PSI BX155 RING GROOVE
H2S service NACE MR0175	Yes
Working Pressure	10 000 psi
Design Pressure	10 000 psi
Test Pressure	15 000 psi
Safety Factor	2,25
Marking	USUAL PHOENIX
Cover	NOT FIRE RESISTANT
Outside protection	St. steel outer wrap
Internal stripwound tube	No
Lining	OIL RESISTANT
Safety clamp	No
Lifting collar	No
Element C	No
Safety chain	No
Safety wire rope	No
Max. design temperature [°C]	100
Min. design temperature [°C]	-20
MBR operating [m]	1,60
MBR storage [m]	1,40
Type of packing	WOODEN CRATE ISPM-15

Attachment # 2



Fluid Technology

Quality Document

453.369-001

QUALITY CONTROL INSPECTION AND TEST CERTIFICATE				CERT. N°: 1098	
PURCHASER: ContiTech Beattie Co.				P.O. N°: 004452	
CONTITECH ORDER N°: 482598		HOSE TYPE: 3" ID		Choke and Kill Hose	
HOSE SERIAL N°: 56839		NOMINAL / ACTUAL LENGTH: 10,67 m / 10,69 m			
W.P. 68,9 MPa 10000 psi		T.P. 103,4 MPa 15000 psi		Duration: 60 min.	
Pressure test with water at ambient temperature					
See attachment. (1 page)					
↑ 10 mm = 10 Min. → 10 mm = 25 MPa					
COUPLINGS Type		Serial N°		Quality	
3" coupling with		8436 1882		AISI 4130	
4 1/16" Flange end				AISI 4130	
				31296 31501	
API Spec 16 C Temperature rate: "B"					
All metal parts are flawless					
WE CERTIFY THAT THE ABOVE HOSE HAS BEEN MANUFACTURED IN ACCORDANCE WITH THE TERMS OF THE ORDER INSPECTED AND PRESSURE TESTED AS ABOVE WITH SATISFACTORY RESULT.					
STATEMENT OF CONFORMITY: We hereby certify that the above items/equipment supplied by us are in conformity with the terms, conditions and specifications of the above Purchaser Order and that these items/equipment were fabricated inspected and tested in accordance with the referenced standards, codes and specifications and meet the relevant acceptance criteria and design requirements.					
COUNTRY OF ORIGIN HUNGARY/EU					
Date:		Inspector		Quality Control	
02. November 2010.				ContiTech Rubber Industrial Kft. Quality Control Dept. (1) <i>[Signature]</i>	

Continental Rubber Industrial Kft.

Phone: +36 62 556 137

E-mail: info@contitech.hu

Fax: +36 62 556 138

STATEMENT OF QUALITY CONTROL INSPECTION AND TEST CERTIFICATE

NO: 1092, 1154

1166

Page: 1/1



ContiTech Rubber
Industrial Kft.
Quality Control Dept.
(7)

Closed Loop System Design, Operating and Maintenance, and Closure Plan

ConocoPhillips Company
Well: WAR HAMMER 25 FEDERAL COM TC 16H
Location: Sec. 25, T26S, R32E
Date: 7/11/2014

ConocoPhillips proposes the following plan for design, operating and maintenance, and closure of our proposed closed loop system for the above named well:

1. We propose to use a closed loop system with steel pits, haul-off bins, and frac tanks for containing all cuttings, solids, mud, water, brine, and liquids. We will not dig a pit, nor will we use a drying pad, nor will we build an earth pit above ground level, nor will we dispose of or bury any waste on location.

All **drilling** waste and all drilling fluids (fresh water, brine, mud, cuttings, drill solids, cement returns, and any other liquid or solid that may be involved) will be contained on location in the rig's steel pits or in haul-off bins or in frac tanks as needed. The intent is as follows:

- We propose to use the rigs' steel pits for containing and maintaining the drilling fluids.
- We propose to remove cuttings and drilled solids from the mud by using solids control equipment and to contain such cuttings and drilled solids on location in haul-off bins.
- We propose that any excess water that may need to be stored on location will be stored in tanks.

The closed loop system components will be inspected daily by each tour and any needed repairs will be made immediately. Any leak in the system will be repaired immediately, and any spilled liquids and/or solids will be cleaned immediately, and the area where any such spill occurred will be remediated immediately.

2. Cuttings and solids will be removed from location in haul-off bins by an authorized contractor and disposed of at an authorized facility. For this well, we propose the following disposal facility:

R-360 Inc.
4507 West Carlsbad Hwy, Hobbs, NM 88240,
P.O. Box 388; Hobbs, New Mexico 88241
Toll Free Phone: 877.505.4274, Local Phone Number: 432.638.4076

The physical address for the plant where the disposal facility is located is Highway 62/180 at mile marker 66 (33 miles East of Hobbs, NM and 32 miles West of Carlsbad, NM).

The Permit Number for R-360 is NM-01-0006.

A photograph showing the type of haul-off bins that will be used is attached.

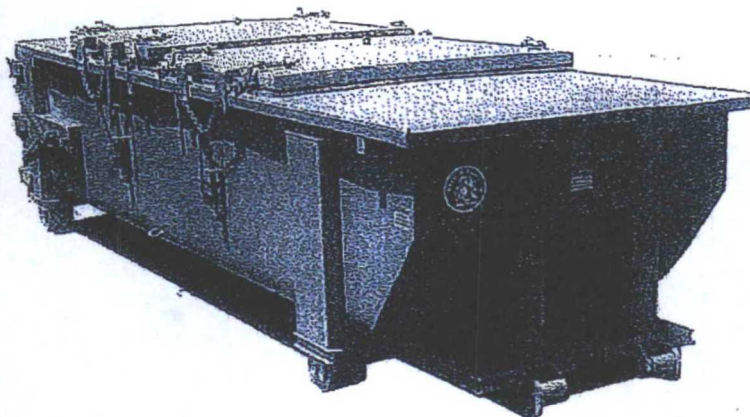
3. Mud will be transported by vacuum truck and disposed of at R-360 Inc. at the facility described above.
4. Fresh Water and Brine will be hauled off by vacuum truck and disposed of at an authorized salt water disposal well. We propose the following for disposal of fresh water and brine as needed:
 - Nabors Well Services Company, 3221 NW County Rd; Hobbs, NM 88240, PO 5208 Hobbs, NM, 88241, Permit SWD 092. (Well Location: **Section 3, T19S R37E**)
 - Basic Energy Services, P.O. Box 1869; Eunice, NM 88231 Phone Number: 575.394.2545, Facility located at Hwy 18, Mile Marker 19; Eunice, NM.

Jason Levinson
Drilling Engineer
Office: 281-206-5334
Cell: 281-682-2783

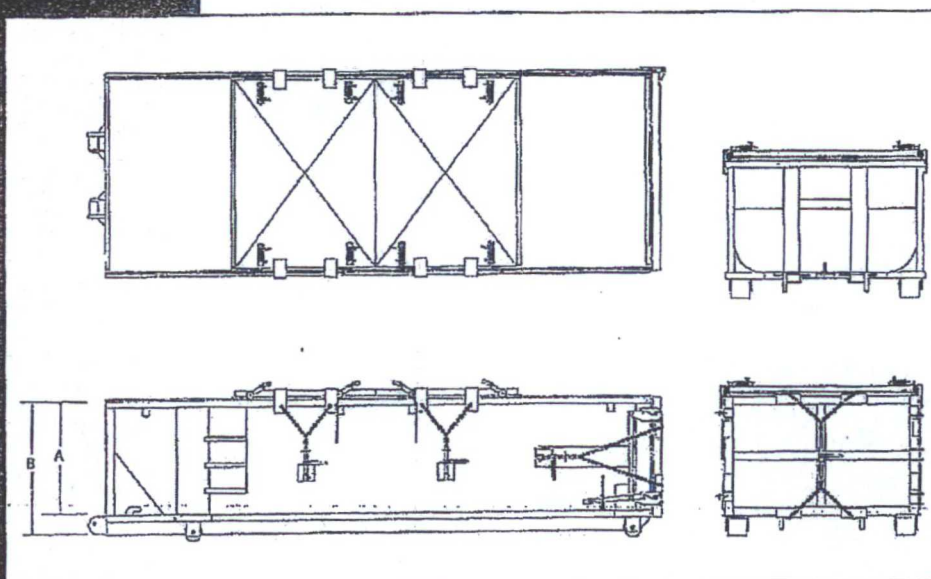
SPECIFICATIONS

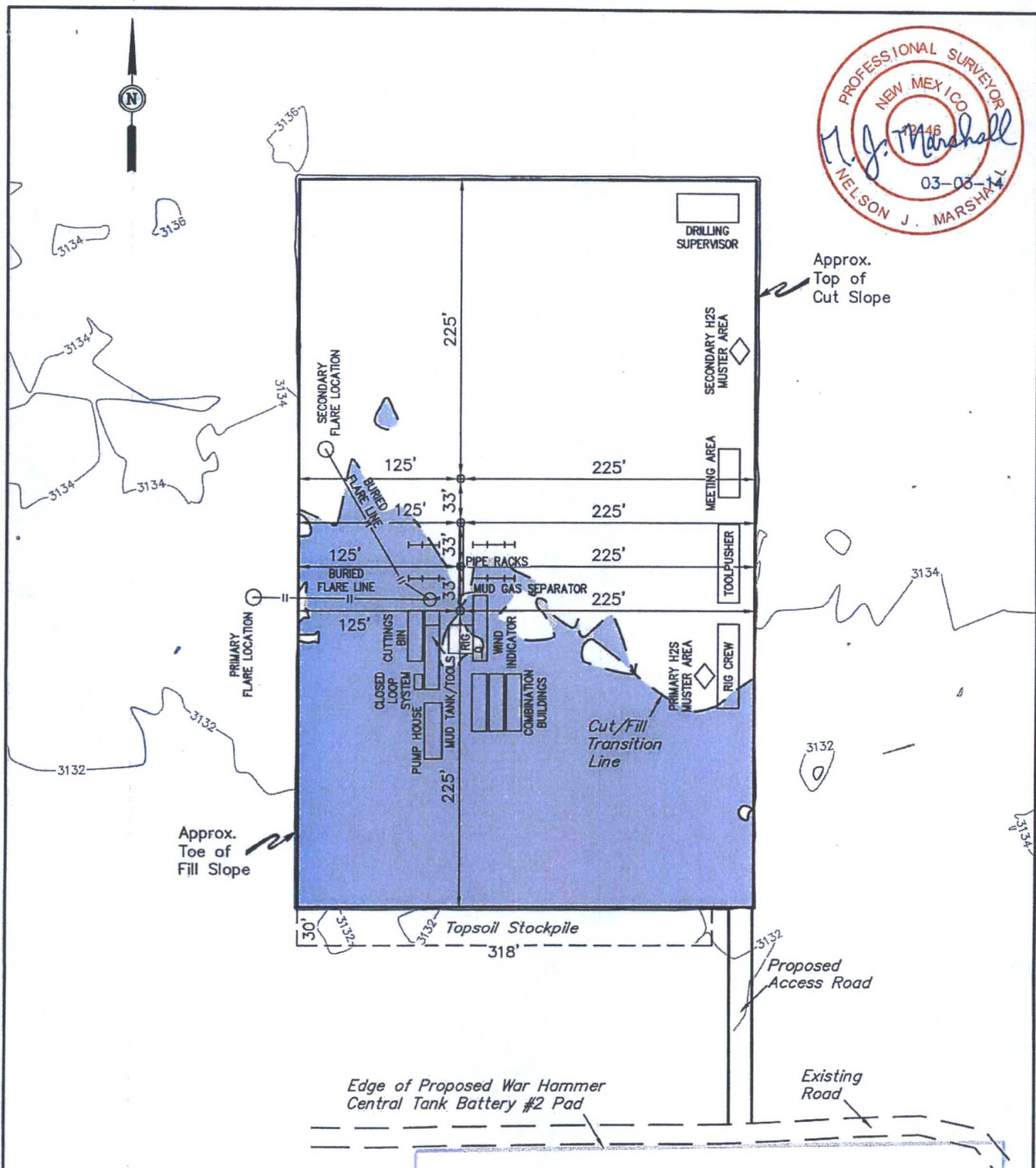
FLOOR: 3/16" PL one piece
 CROSS MEMBER: 3 x 4.1 channel 16" on center
 WALLS: 3/16" PL solid welded with tubing top, inside liner hooks
 DOOR: 3/16" PL with tubing frame
 FRONT: 3/16" PL slant formed
 PICK UP: Standard cable with 2" x 6" x 1/4" rails, gusset at each crossmember
 WHEELS: 10 DIA x 9 long with rease fittings
 DOOR LATCH: 3 Independent ratchet binders with chains, vertical second latch
 GASKETS: Extruded rubber seal with metal retainers
 WELDS: All welds continuous except sub-structure crossmembers
 FINISH: Coated inside and out with direct to metal, rust inhibiting acrylic enamel color coat
 HYDROTESTING: Full capacity static test
 DIMENSIONS: 22'-11" long (21'-8" inside), 99" wide (88" inside), see drawing for height
 OPTIONS: Steel grit blast and special paint, Ampliroll, Heil and Dino pickup
 ROOF: 3/16" PL roof panels with tubing and channel support frame
 LIDS: (2) 68" x 90" metal rolling lids spring loaded, self raising
 ROLLERS: 4" V-groove rollers with delrin bearings and grease fittings
 OPENING: (2) 60" x 82" openings with 8" divider centered on container
 LATCH: (2) independent ratchet binders with chains per lid
 GASKETS: Extruded rubber seal with metal retainers

Heavy Duty Split Metal Rolling Lid



CONT.	A	B
20 YD	41	53
25 YD	53	65
30 YD	65	77





NOTES:

- Flare pit is to be located a min. of 160' from the well head.

ConocoPhillips

ConocoPhillips Company

WAR HAMMER 25 FEDERAL COM
TC 16H, W1 15H, W2 14H & W3 13H
SECTION 25, T26S, R32E, N.M.P.M.
NW 1/4 NE 1/4

DRAWN BY: C.A.G.

SCALE: 1" = 100'

DATE: 02-16-14

REVISED:

TYPICAL RIG LAYOUT

FIGURE #3



Corporate Office * 85 South 200 East
 Vernal, UT 84078 * (435) 789-1017