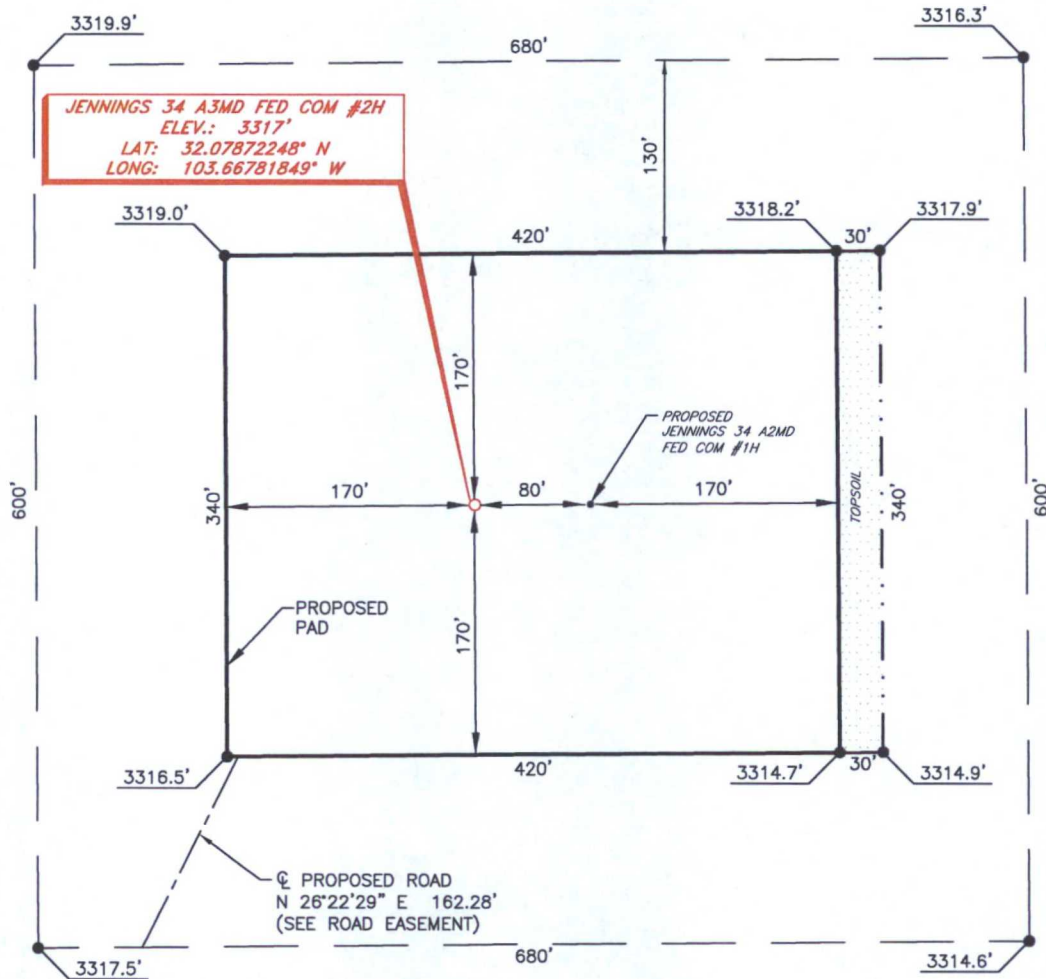




MEWBOURNE OIL COMPANY  
JENNINGS 34 A3MD FED COM #2H  
(300' FNL & 990' FWL)  
SECTION 3, T26S, R32E  
N. M. P. M., LEA COUNTY, NEW MEXICO



DIRECTIONS TO LOCATION

From the intersection of CR-1 (Orla Hwy.) and Pipeline Rd.  
Go North on CR-1 approx. 0.9 miles to a lease road on the right;  
Turn right and go East approx. 0.1 miles to the Southeast corner of existing pad;  
Turn left and go North approx. 204 feet to a proposed road on the Northeast corner of existing pad;  
Go Northeast on proposed road approx. 334 feet to location on the right.

SCALE: 1" = 100'  
0 50 100

BEARINGS ARE  
NAD 27 GRID - NM EAST  
DISTANCES ARE GROUND

Firm No.: TX 10193838 NM 4655451

Copyright 2014 - All Rights Reserved

NO.	REVISION	DATE
JOB NO.:	LS1508447	
DWG. NO.:	1508447PAD	

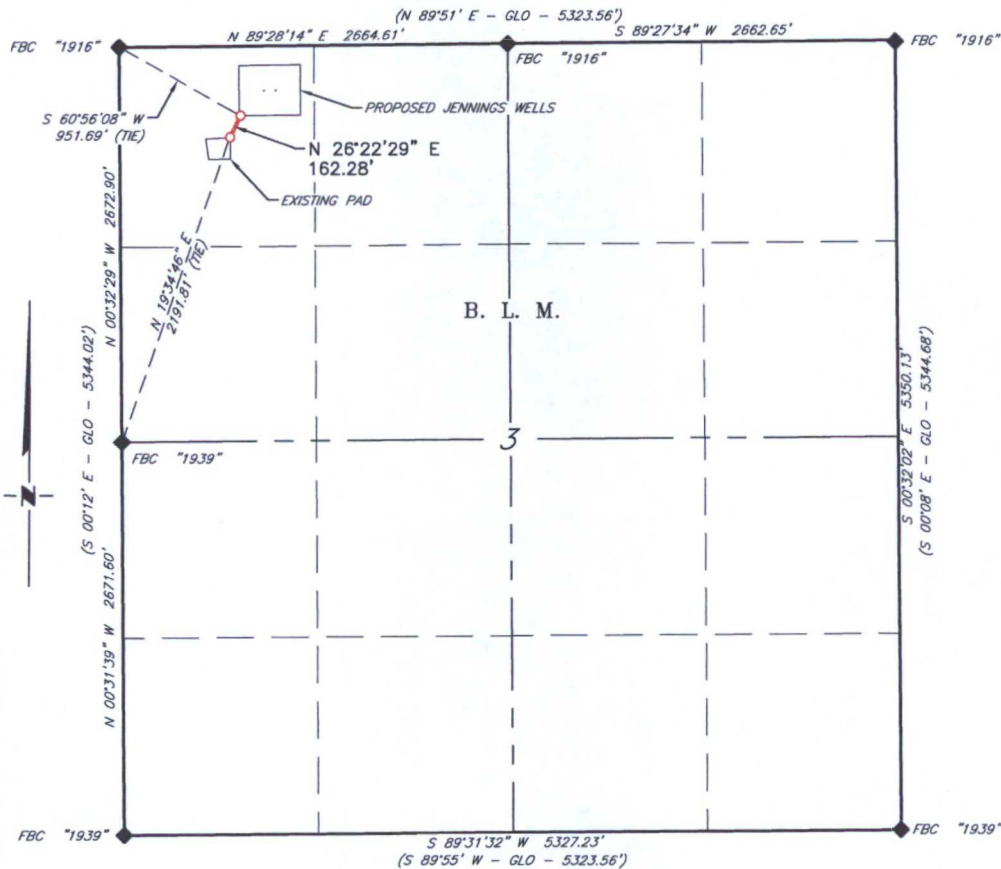
**RRC**

308 W. BROADWAY ST., HOBBS, NM 88240 (575) 964-8200

SCALE: 1" = 100'
DATE: 9-3-2015
SURVEYED BY: ML/CE
DRAWN BY: LPS
APPROVED BY: RMH
SHEET : 1 OF 1



**MEWBOURNE OIL COMPANY  
PROPOSED ACCESS ROAD FOR THE  
JENNINGS 34 A3MD FED COM #2H  
SECTION 3, T26S, R32E,  
N. M. P. M., LEA CO., NEW MEXICO**



**DESCRIPTION**

A strip of land 30 feet wide, being 162.28 feet or 9.835 rods in length lying in Section 3, Township 26 South, Range 32 East, N. M. P. M., Lea County, New Mexico, being 15 feet left and 15 feet right of the following described survey of a centerline across B. L. M. land;

BEGINNING at Engr. Sta. 0+00, a point in the Northwest quarter of Section 3, which bears N 19°34'46" E, 2,191.81 feet from a brass cap, stamped "1939" found for the West quarter corner of Section 3;

Thence N 26°22'29" E, 162.28 feet to Engr. Sta. 1+62.28, the End of Survey, a point which bears S 60°56'08" E, 951.69 feet from a brass cap, stamped "1916" found for the Northwest corner of Section 3.

Said strip of land contains 0.112 acres, more or less, and is allocated by forties as follows:

NW 1/4 NW 1/4      9.835 Rods      0.112 Acres

SCALE: 1" = 1000'  
0      500'      1000'

BEARINGS ARE GRID NAD 27  
NM EAST  
DISTANCES ARE HORIZ. GROUND.

**LEGEND**

( ) RECORD DATA - GLO

◆ FOUND MONUMENT  
AS NOTED

— PROPOSED ACCESS  
ROAD

I, R. M. Howett, a N. M. Professional Surveyor, hereby certify that I prepared this plat from an actual survey made on the ground under my direct supervision, said survey and plat meet the Min. Stds. for Land Surveying in the State of N. M. and are true and correct to the best of my knowledge and belief.

*Robert M. Howett*  
Robert M. Howett      NM PS 19680



Firm No.: TX 10193838 NM 4655451

Copyright 2014 - All Rights Reserved

NO.	REVISION	DATE
JOB NO.:	LS1508447	
DWG. NO.:	1508447RD	

**RRC**

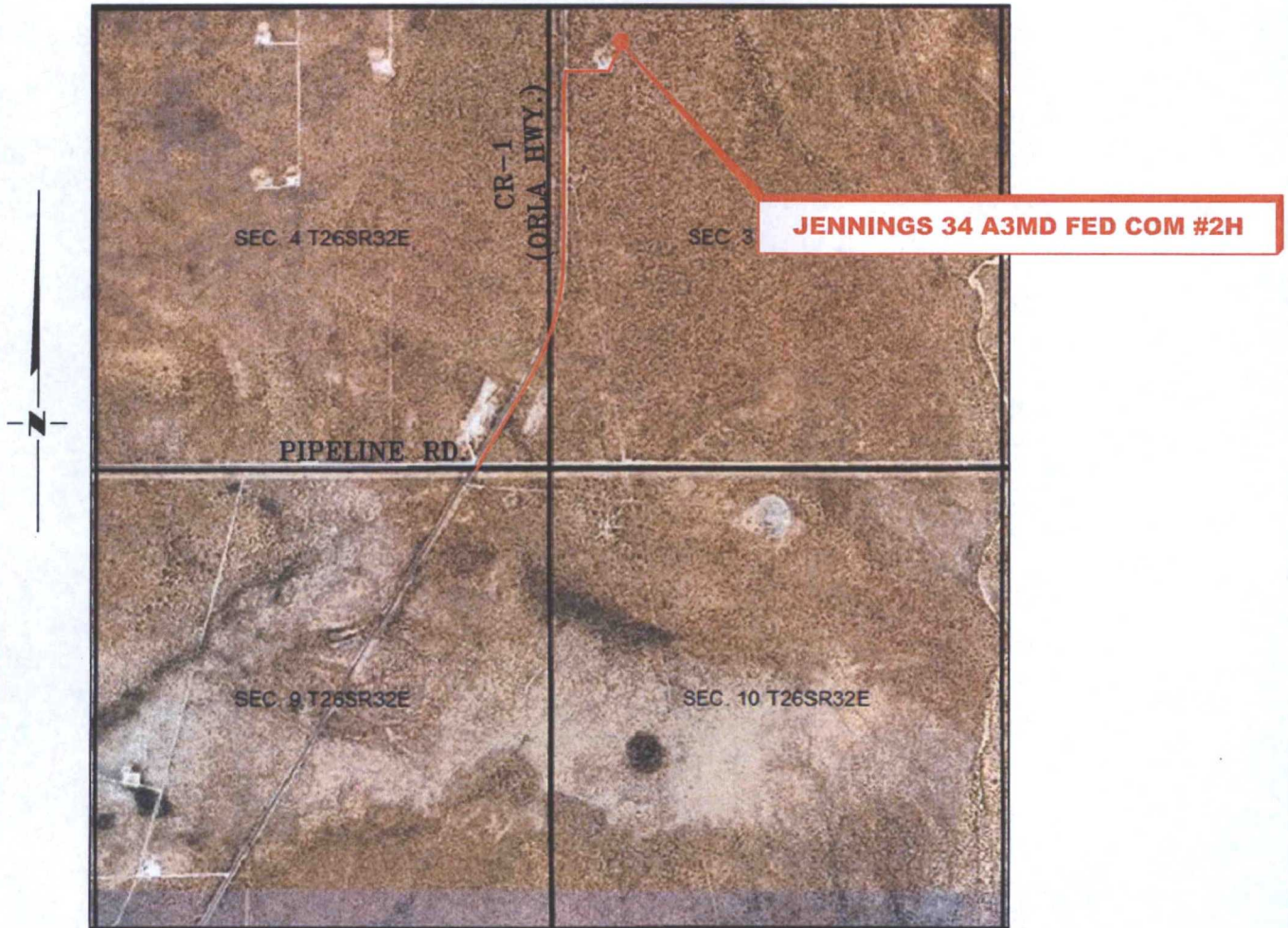
308 W. BROADWAY ST., HOBBS, NM 88240 (575) 964-8200

SCALE: 1" = 1000'
DATE: 9-3-2015
SURVEYED BY: ML/CE
DRAWN BY: LPS
APPROVED BY: RMH
SHEET : 1 OF 1

3E"

# VICINITY MAP

NOT TO SCALE



*SECTION 3, TWP. 26 SOUTH, RGE. 32 EAST,  
N. M. P. M., LEA CO., NEW MEXICO*

OPERATOR: Mewbourne Oil Company  
LEASE: Jennings 34 A3MD Fed Com  
WELL NO.: 2H

LOCATION: 300' FNL & 990' FWL  
ELEVATION: 3317'

Firm No.: TX 10193838 NM 4655451

Copyright 2014 - All Rights Reserved

NO.	REVISION	DATE
JOB NO.: LS1508447		
DWG. NO.: 1508447VM		

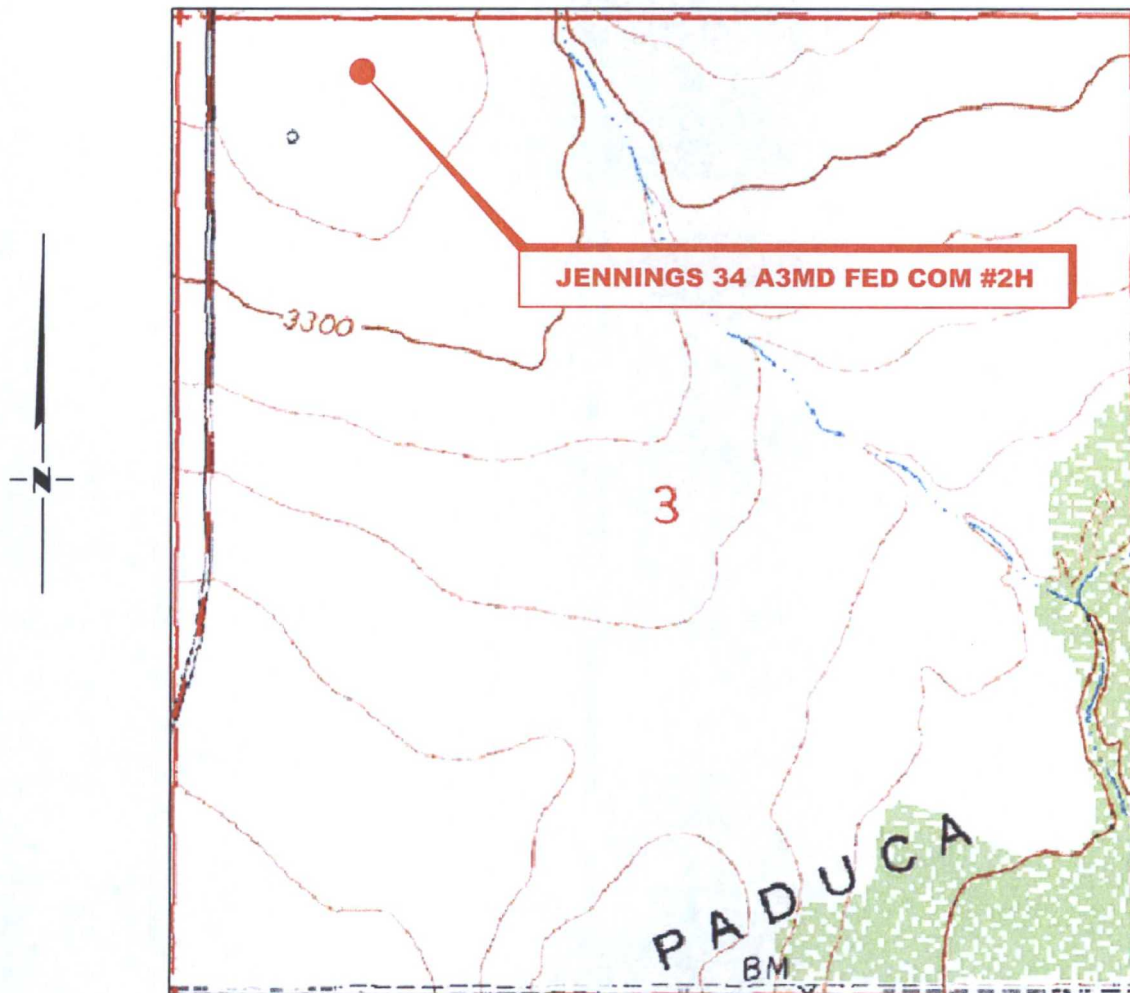
# RRC

308 W. BROADWAY ST., HOBBS, NM 88240 (575) 964-8200

SCALE: NTS
DATE: 9-3-2015
SURVEYED BY: ML/CE
DRAWN BY: LPS
APPROVED BY: RMH
SHEET : 1 OF 1



# LOCATION VERIFICATION MAP



*SECTION 3, TWP. 26 SOUTH, RGE. 32 EAST,  
N. M. P. M., LEA CO., NEW MEXICO*

OPERATOR: Mewbourne Oil Company  
 LEASE: Jennings 34 A3MD Fed Com  
 WELL NO.: 2H  
 ELEVATION: 3317'

LOCATION: 300' FNL & 990' FWL  
 CONTOUR INTERVAL: 10'  
 USGS TOPO. SOURCE MAP:  
Paduca Breaks West, NM (1973)

Firm No.: TX 10193838 NM 4655451

Copyright 2015 - All Rights Reserved

NO.	REVISION	DATE
JOB NO.:	LS1508447	
DWG. NO.:	1508447LVM	

## RRC

308 W. BROADWAY ST., HOBBS, NM 88240 (575) 964-8200

SCALE: 1000'
DATE: 9-3-2015
SURVEYED BY: ML/CE
DRAWN BY: LPS
APPROVED BY: RMH
SHEET : 1 OF 1

Exhibit "4" - SL - Jennings 34 A3MD Fed Com #2H

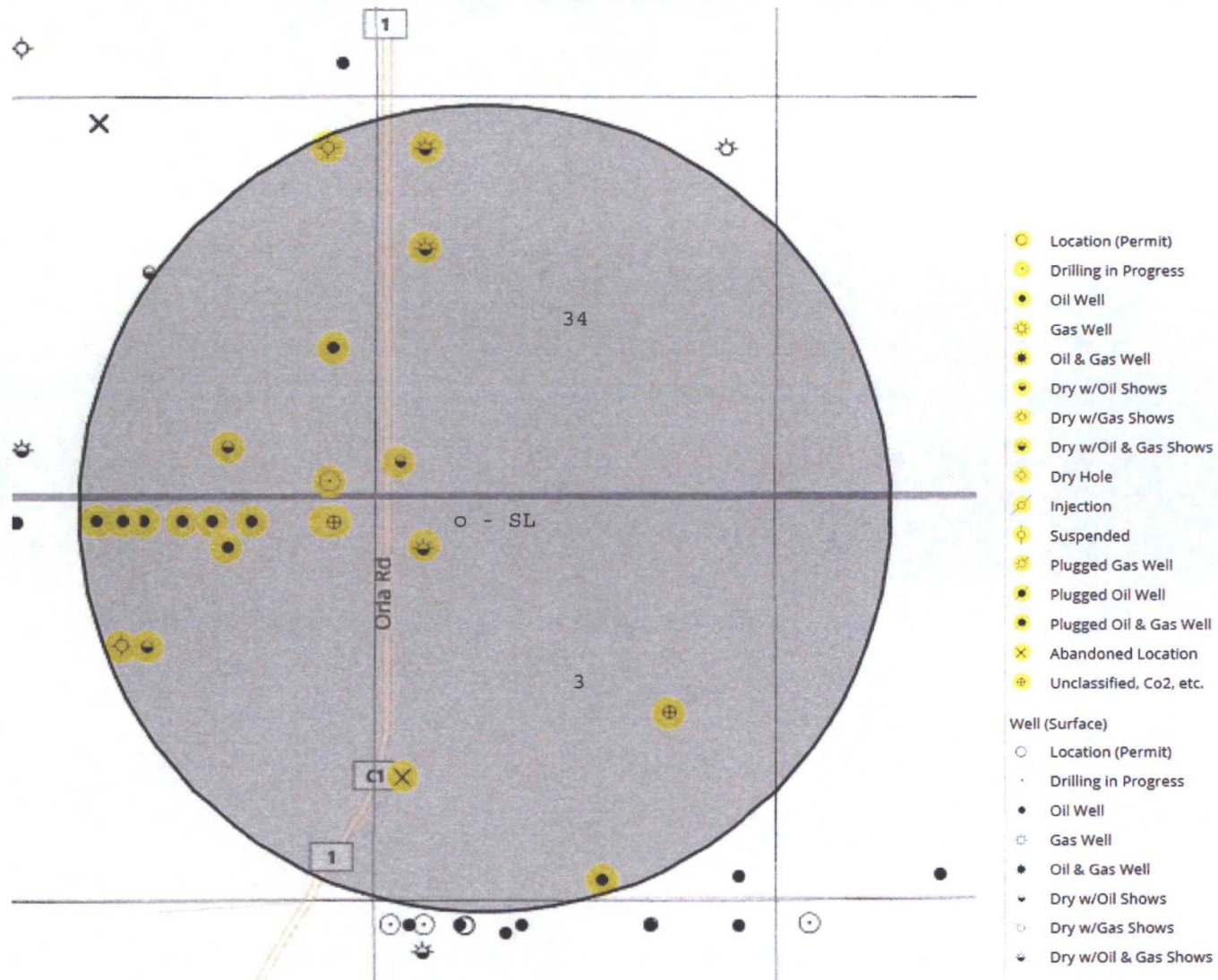




Exhibit "4A" - BHL - Jennings 34 A3MD Fed Com #2H

