

Office

Energy, Minerals and Natural Resources

Revised July 18, 2013

District I - (575) 393-6161

1625 N. French Dr., Hobbs, NM 88240

District II - (575) 748-1283

811 S. First St., Artesia, NM 88210

District III - (505) 334-6178

1000 Rio Brazos Rd., Aztec, NM 87410

District IV - (505) 476-3460

1220 S. St. Francis Dr., Santa Fe, NM

87505

OIL CONSERVATION DIVISION

1220 South St. Francis Dr.

Santa Fe, NM 87505

WELL API NO.

30-025-36384

5. Indicate Type of Lease

STATE ☒ FEE ☐

6. State Oil & Gas Lease No.

VO-5629

7. Lease Name or Unit Agreement Name

Kris BMQ State Com

8. Well Number

1

9. OGRID Number

025575

10. Pool name or Wildcat

Eight Mile Draw; Morrow, NW

SUNDRY NOTICES AND REPORTS ON WELLS

(DO NOT USE THIS FORM FOR PROPOSALS TO DRILL OR TO DEEPEN OR PLUG BACK TO A DIFFERENT RESERVOIR. USE "APPLICATION FOR PERMIT" (FORM C-101) FOR SUCH PROPOSALS.)

1. Type of Well: Oil Well ☐ Gas Well ☒ Other

2. Name of Operator

Yates Petroleum Corporation

3. Address of Operator

105 South Fourth Street, Artesia, NM 88210

4. Well Location

Unit Letter D : 1300 feet from the North line and 990 feet from the West lineSection 28 Township 11S Range 34E NMPM Lea County

11. Elevation (Show whether DR, RKB, RT, GR, etc.)

4188'GR

12. Check Appropriate Box to Indicate Nature of Notice, Report or Other Data

NOTICE OF INTENTION TO:

PERFORM REMEDIAL WORK ☐ PLUG AND ABANDON ☒TEMPORARILY ABANDON ☐ CHANGE PLANS ☐PULL OR ALTER CASING ☐ MULTIPLE COMPL ☐DOWNHOLE COMMINGLE ☐CLOSED-LOOP SYSTEM ☐OTHER: ☐

SUBSEQUENT F

REMEDIAL WORK ☐ INT TO PA PM, XCOMMENCE DRILLING OPNS. ☐ P&A NR -CASING/CEMENT JOB ☐ P&A R -

OTHER:

13. Describe proposed or completed operations. (Clearly state all pertinent details, and give pertinent dates, including estimated date of starting any proposed work). SEE RULE 19.15.7.14 NMAC. For Multiple Completions: Attach wellbore diagram of proposed completion or recompletion.

Yates Petroleum Corporation plans to plug and abandon this well as follows:

1. MIRU all safety equipment as needed. NU BOP. TOH with production equipment.
2. Set a CIBP at 11,874', dump 35' Class "C" cement on top. This will cover the top of the Morrow. CIRC MLF. Test CSG.
3. Spot a 25 sx Class "H" cement plug from 9045'-9235'. This will cover the top of the Wolfcamp.
4. Spot a 25 sx Class "H" cement plug from 7661'-7831'. This will cover the top of the Abo.
5. Spot a 25 sx Class "C" cement plug from 5437'-5587'. This will cover the top of the Glorieta.
6. Spot a 30 sx Class "C" cement plug from 4010'-4280'. This will cover the top of the San Andres and the 9-5/8" intermediate casing shoe. WOC.
7. Tag TOC at 4010'. Pull up to 2050' and spot a 25 sx Class "C" cement plug from 2050'-1800' (T. SALT).
8. Pull up to 439' and spot a 25 sx Class "C" cement plug from 339' 439'. This will cover the 13-3/8" surface casing shoe. WOC. FILL TO SURFACE
9. Tag TOC at 339'. Pull up to 100' and spot a 10 sx Class "C" cement plug from 100' up to surface. This will cover the surface.
10. Cut off wellhead, install dry hole marker and clean location.

Wellbore schematics attached

NOTIFY OCD 24 HOURS PRIOR TO BEGINNING
PLUGGING OPERATIONS

Spud Date:

I hereby certify that the information above is true and complete to the best of my knowledge and belief.

SIGNATURE Tina Huerta TITLE Regulatory Reporting Supervisor DATE August 25, 2016Type or print name Tina Huerta E-mail address: tinah@yatespetroleum.com PHONE: 575-748-4168

For State Use Only

APPROVED BY: Mark Whitaker TITLE Petroleum Engr. Specialist DATE 8/29/2016

Conditions of Approval (if any):

COMMENTS: API No.: 30-025-36384

Not to Scale
8/3/2016
SAA

WELL NAME: Kris BMQ State Com #1 FIELD: _____

LOCATION: 1300' FNL & 990' FWL Sec. 28-11S-34E Lea Co., NM

GL: 4,188' ZERO: _____ KB: _____

SPUD DATE: 11/6/2003 COMPLETION DATE: 1/15/2016

COMMENTS: API No.: 30-025-36384

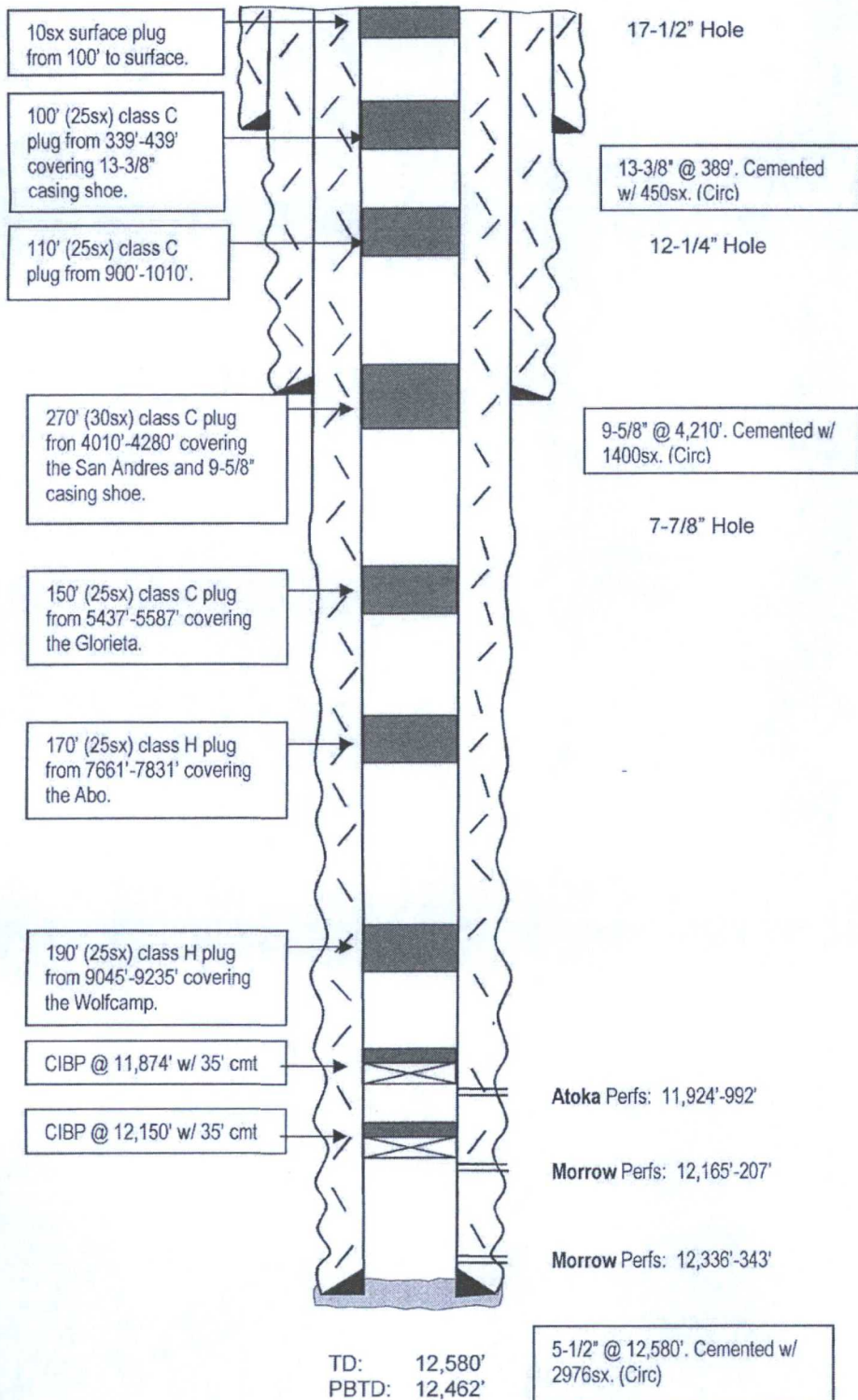
CASING PROGRAM

13-3/8" 48#	389'
9-5/8" 36# & 40#	4,210'
5-1/2" 17#	12,580'

After

TOPS

Rustler	1997'
San Andres	4060'
Glorieta	5512'
Tubb	6968'
Abo	7746'
Wolfcamp	9140'
Morrow	11988'
Austin	12252'
L. Miss Lm	12426'



Not to Scale
8/3/2016
SAA