



HYDROGEN SULFIDE (H₂S) CONTINGENCY PLAN

Assumed 100 ppm ROE = 3000'

100 ppm H₂S concentration shall trigger activation of this plan.

Emergency Procedures

In the event of a release of gas containing H₂S, the first responder(s) must

- Isolate the area and prevent entry by other persons into the 100 ppm ROE.
- Evacuate any public places encompassed by the 100 ppm ROE.
- Be equipped with H₂S monitors and air packs in order to control the release.
- Use the "buddy system" to ensure no injuries occur during the response
- Take precautions to avoid personal injury during this operation.
- Contact operator and/or local officials to aid in operation. See list of phone numbers attached.
- Have received training in the
 - o Detection of H₂S, and
 - o Measures for protection against the gas,
 - o Equipment used for protection and emergency response.

Ignition of Gas source

Should control of the well be considered lost and ignition considered, take care to protect against exposure to Sulfur Dioxide (SO₂). Intentional ignition must be coordinated with the NMOCD and local officials. Additionally the NM State Police may become involved. NM State Police shall be the Incident Command on scene of any major release. Take care to protect downwind whenever this is an ignition of the gas.

Characteristics of H₂S and SO₂

Common Name	Chemical Formula	Specific Gravity	Threshold Limit	Hazardous Limit	Lethal Concentration
Hydrogen Sulfide	H₂S	1.189 Air = 1	10 ppm	100 ppm/hr	600 ppm
Sulfur Dioxide	SO₂	2.21 Air = 1	2 ppm	N/A	1000 ppm

Contacting Authorities

XTO Energy Inc's personnel must liaison with local and state agencies to ensure a proper response to a major release. Additionally, the OCD must be notified of the release as soon as possible but no later than 4 hours. Agencies will ask for information such as type and volume of release, wind direction, location of release, etc. Be prepared with all information available including directions to site. The following call list of essential and potential responders has been prepared for use during a release. (Operator Name)'s response must be in coordination with the State of New Mexico's "Hazardous Materials Emergency Response Plan" (HMER).

EUNICE OFFICE – EDDY & LEA COUNTIES

EMSU @ Oil Center, NM, 8/10ths mile west of Hwy 8 on Hwy 175
Eunice, NM

575-394-2089

XTO ENERGY INC PERSONNEL:

Milton Turman, Sr. Drilling Superintendent	432-556-7403
Bob Chance, Drilling Superintendent	432-296-3926
Jeff Raines, Construction Foreman	432-557-3159
Dudley McMinn, EH & S Manager	432-557-7976
Rick Wilson, Production Foreman	575-441-1147

SHERIFF DEPARTMENTS:

Eddy County	575-887-7551
Lea County	575-396-3611

NEW MEXICO STATE POLICE:

575-392-5588

FIRE DEPARTMENTS:

	911
Carlsbad	575-885-2111
Eunice	575-394-2111
Hobbs	575-397-9308
Jal	575-395-2221
Lovington	575-396-2359

HOSPITALS:

	911
Carlsbad Medical Emergency	575-885-2111
Eunice Medical Emergency	575-394-2112
Hobbs Medical Emergency	575-397-9308
Jal Medical Emergency	575-395-2221
Lovington Medical Emergency	575-396-2359

AGENT NOTIFICATIONS:

Bureau of Land Management	575-393-3612
New Mexico Oil Conservation Division	575-393-6161
Mosaic Potash - Carlsbad	575-887-2871

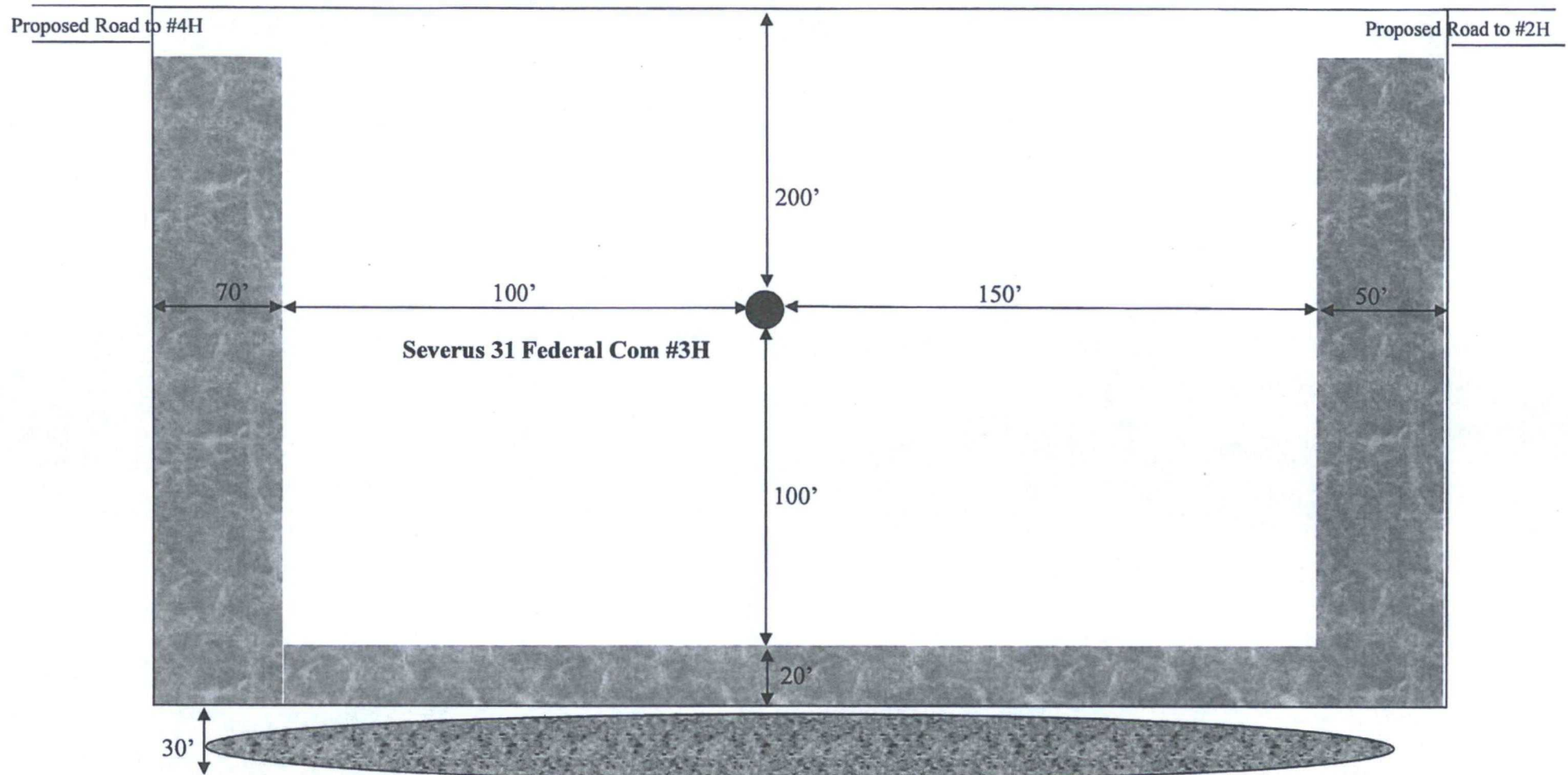
CONTRACTORS:

ABC Rental – Light Towers	575-394-3155
Bulldog Services – Trucking/Forklift	575-391-8543
Champion – Chemical	575-393-7726
Indian Fire & Safety	575-393-3093
Key – Dirt Contractor	575-393-3180
Key Tools – Light Towers	575-393-2415
Sweatt – Dirt Contractor	575-397-4541
RWI – Contract Gang	575-393-5305

Interim Reclamation Diagram

Severus Federal Com #3H

V-Door West



LEGEND



Wellbore

Interim Reclamation



Ditch & Berm



Topsoil



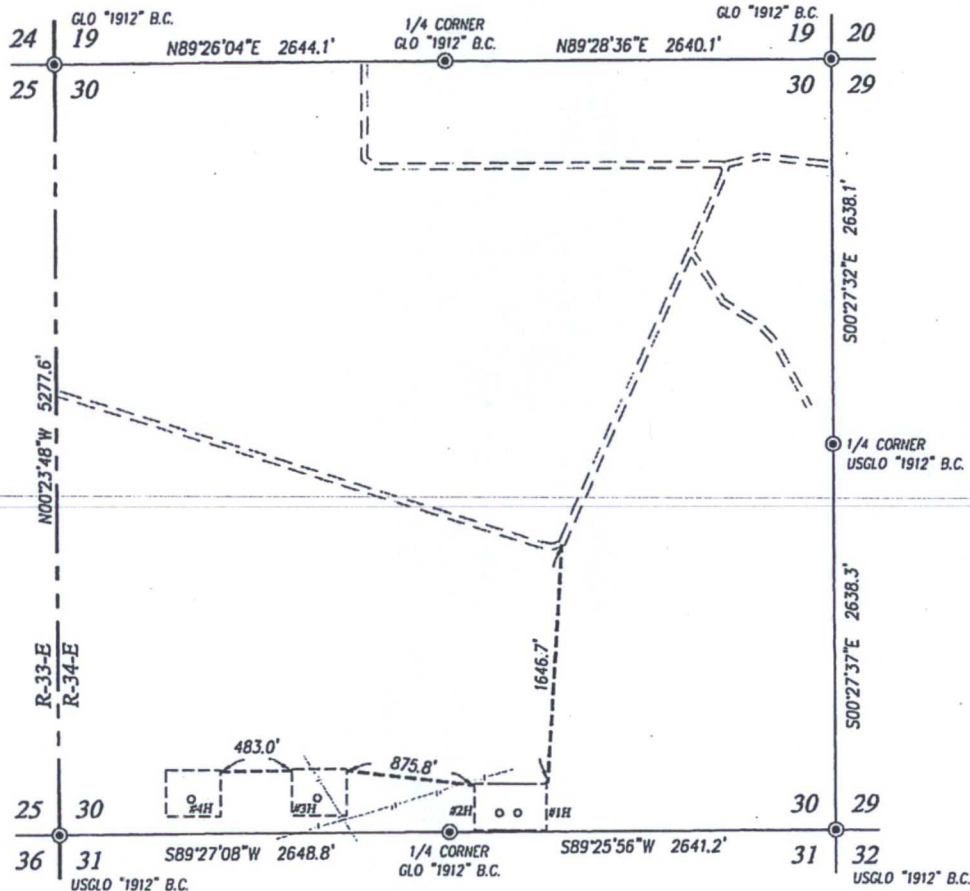
Midland, TX 79701
432-638-4380 (Office)

On-Site Performed December 3, 2014 resulted in no changes to the well location. Top soil is South, V-door West, road into northeast corner from #1H/#2H well pad.

PRESET AT ON-SITE:

Rebecca Hill, Boone Arch Surveying
Jimie Scott, Contract Representative for XTO Energy, Inc
John West Surveying Company

Trishia Bad Bear previously cleared this drill island with BC Operating and gave XTO Energy, Inc. verbal permission to stake the wells so long as they fell on the approved drilling island.



LEGEND:

- ⊙ DENOTES FOUND CORNER AS NOTED
- DENOTES PROPOSED WELL
- - - - - DENOTES ELECTRIC LINE
- - - - - DENOTES PIPELINE
- == == == DENOTES EXISTING ROAD
- PROPOSED ROAD

NOTE

BEARINGS SHOWN HEREON ARE MERCATOR GRID AND CONFORM TO THE NEW MEXICO COORDINATE SYSTEM "NEW MEXICO EAST ZONE" NORTH AMERICAN DATUM 1983. DISTANCES ARE SURFACE VALUES.

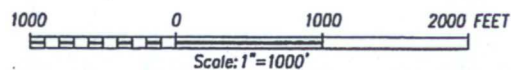
I, RONALD J. EIDSON, NEW MEXICO PROFESSIONAL SURVEYOR No. 3239, DO HEREBY CERTIFY THAT THIS SURVEY, PLAN AND THE ACTUAL SURVEY ON THE GROUND UPON WHICH IT IS BASED, WERE PERFORMED BY ME OR UNDER MY DIRECT SUPERVISION, THAT I AM RESPONSIBLE FOR THIS SURVEY; THAT THIS SURVEY MEETS THE MINIMUM STANDARDS FOR SURVEYING IN NEW MEXICO; AND THAT IT IS TRUE AND CORRECT TO THE BEST OF MY KNOWLEDGE AND BELIEF.

RONALD J. EIDSON

DATE: 02/04/2015

LEGEND

- ⊙ DENOTES FOUND CORNER AS NOTED



XTO ENERGY

LEASE FLOW MAP FOR
THE SEVERUS 31 FEDERAL COM LEASE
LOCATED IN SECTIONS 30,
TOWNSHIP 20 SOUTH, RANGE 34 EAST, N.M.P.M.
LEA COUNTY, NEW MEXICO

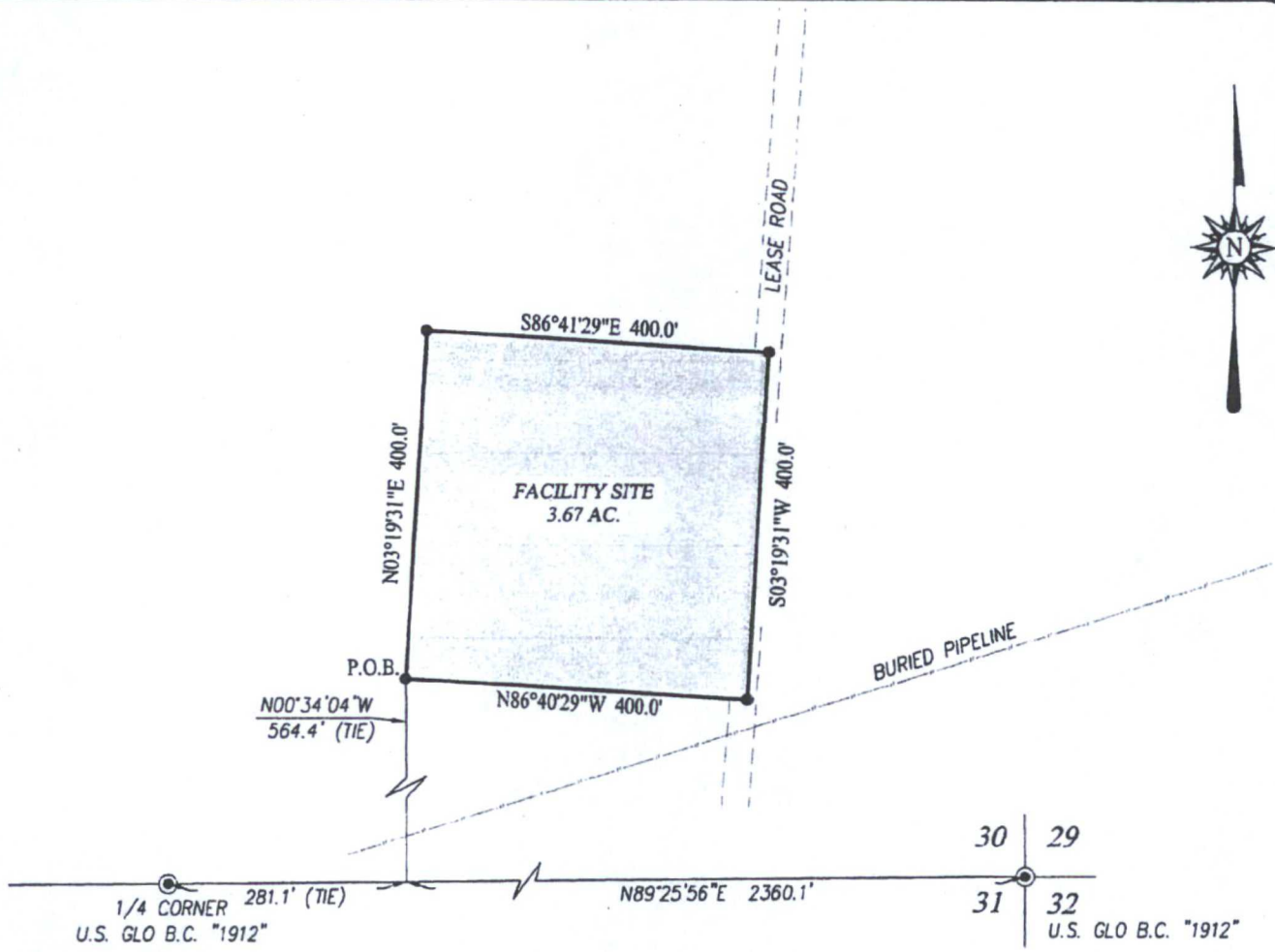


PROVIDING SURVEYING SERVICES
SINCE 1946
JOHN WEST SURVEYING COMPANY
412 N. DAL PASO HOBBS, N.M. 88240
(575) 393-3117 www.jwsc.biz
T8PLS# 10021000

© DRAFTING

Survey Date: 12/17/14	CAD Date: 1/30/15	Drawn By: LSL
W.O. No.: 15130133	Rev.:	Rel. W.O.:
		Sheet 1 of 1





LEGEND

- DENOTES FOUND CORNER AS NOTED
- DENOTES TRACT CORNER

NOTE

BEARINGS SHOWN HEREON ARE MERCATOR GRID AND CONFORM TO THE NEW MEXICO COORDINATE SYSTEM "NEW MEXICO EAST ZONE" NORTH AMERICAN DATUM 1983. DISTANCES ARE SURFACE VALUES.

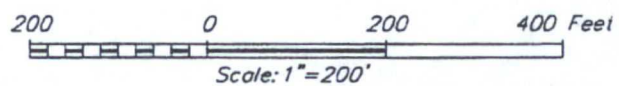
I, RONALD J. EIDSON, NEW MEXICO PROFESSIONAL SURVEYOR No. 3239, DO HEREBY CERTIFY THAT THIS SURVEY PLAT AND THE ACTUAL SURVEY ON THE GROUND UPON WHICH IT IS BASED WERE PERFORMED BY ME OR UNDER MY DIRECT SUPERVISION; THAT I AM RESPONSIBLE FOR THIS SURVEY; THAT THIS SURVEY MEETS THE MINIMUM STANDARDS FOR SURVEYING IN NEW MEXICO; AND THAT IT IS TRUE AND CORRECT TO THE BEST OF MY KNOWLEDGE AND BELIEF.

RONALD J. EIDSON *Ronald J. Eidson*
 DATE: 07/30/2015

DESCRIPTION:

A TRACT SITUATED IN THE SOUTHEAST QUARTER OF SECTION 31, TOWNSHIP 20 SOUTH, RANGE 34 EAST, N.M.P.M., LEA COUNTY, NEW MEXICO AND BEING MORE PARTICULARLY DESCRIBED AS FOLLOWS:

BEGINNING AT THE SOUTHWEST CORNER, WHICH LIES N89°25'56"E 281.1 FEET AND N00°34'04"W 564.4 FEET FROM THE SOUTH 1/4 CORNER; THEN N03°19'31"E 400.0 FEET; THEN S89°41'29"E 400.0 FEET; THEN S03°19'31"W 400.0 FEET; THEN N89°40'29"W 400.0 FEET TO THE POINT OF BEGINNING AND CONTAINING 3.67 ACRES MORE OR LESS.



XTO ENERGY

SURVEY FOR A FACILITY SITE FOR THE SEVERUS FEDERAL LEASE SITUATED IN THE SE/4 OF SECTION 31, TOWNSHIP 20 SOUTH, RANGE 34 EAST, N.M.P.M. LEA COUNTY, NEW MEXICO

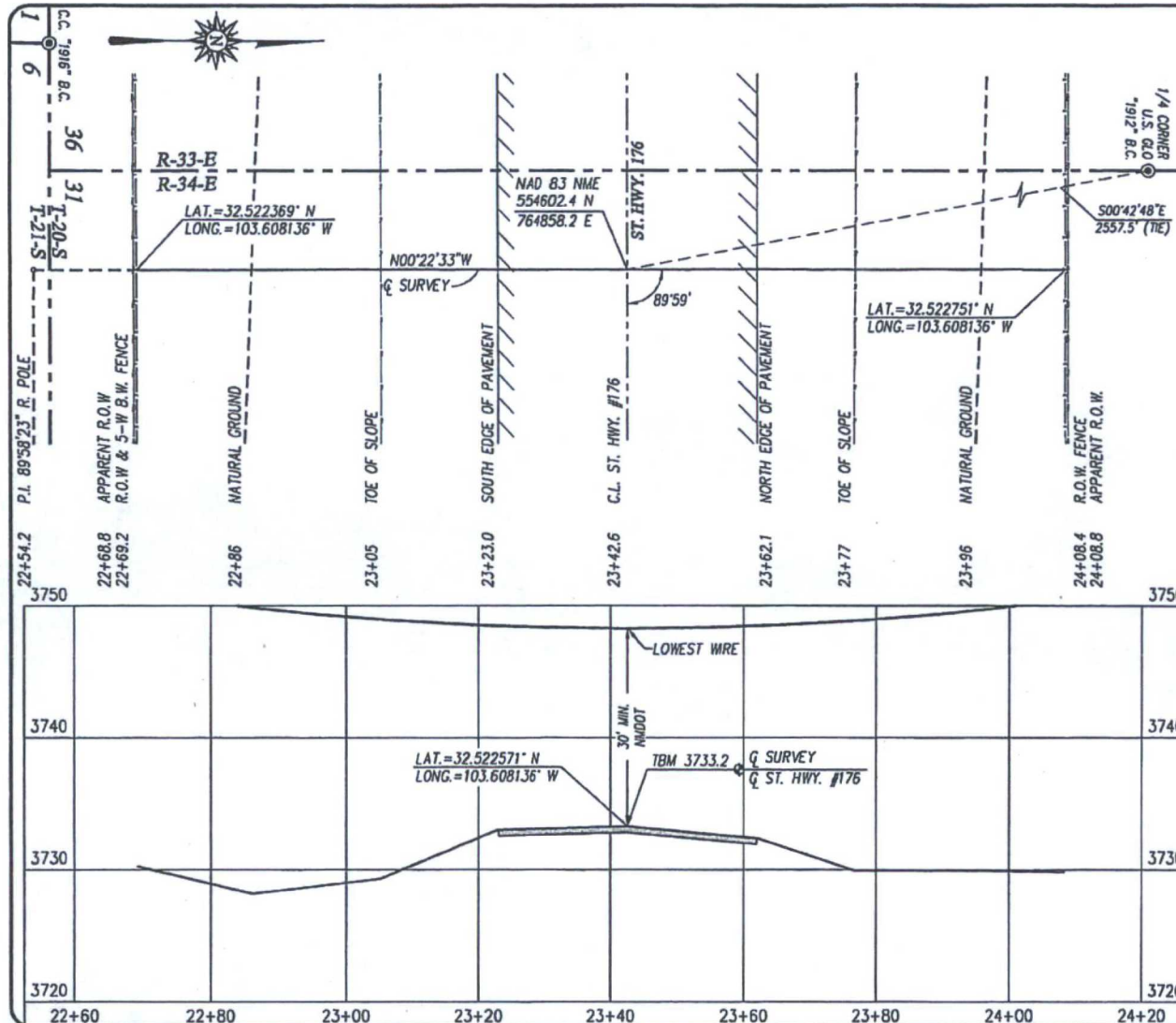
Survey Date: 7/14/15	CAD Date: 7/29/15	Drawn By: ACK
W.O. No.: 15110714	Rev. :	Rel. W.O.:

Sheet 1 of 1



PROVIDING SURVEYING SERVICES
 SINCE 1946
JOHN WEST SURVEYING COMPANY
 412 N. DAL PASO HOBBS, N.M. 88240
 (575) 393-3117 www.jwsc.biz
 TBPLS# 10021000





HWY. PROJECT NO. _____
DISTRICT UTILITY PERMIT NUMBER: _____
DATE OF COMPLETION OF SURVEY: 2/20/16
EQUIPMENT: TRIMBLE 5700 RTK GPS
REFERENCE MARKS: JWSC OPUS PT.
"FISKE"
GROUND TO GRID COMBINED SCALE FACTOR: 0.9997864472

NOTE:
BEARINGS AND COORDINATE VALUES SHOWN HEREON ARE MERCATOR GRID AND CONFORM TO THE NEW MEXICO COORDINATE SYSTEM "NEW MEXICO EAST ZONE", NORTH AMERICAN DATUM OF 1983. DISTANCES ARE SURFACE VALUES. ELEVATIONS ARE RELATIVE TO THE NORTH AMERICAN VERTICAL DATUM 1988 (GEOID 2003).



I, RONALD J. EIDSON, NEW MEXICO PROFESSIONAL SURVEYOR No. 3239, DO HEREBY CERTIFY THAT THIS SURVEY PLAT AND THE ACTUAL SURVEY ON THE GROUND UPON WHICH IT IS BASED WERE PERFORMED BY ME OR UNDER MY DIRECT SUPERVISION; THAT I AM RESPONSIBLE FOR THIS SURVEY; THAT THIS SURVEY MEETS THE MINIMUM STANDARDS FOR SURVEYING IN NEW MEXICO; AND THAT IT IS TRUE AND CORRECT TO THE BEST OF MY KNOWLEDGE AND BELIEF.

RONALD J. EIDSON *Ronald J. Eidson*
DATE: 3/14/2016

XTO ENERGY

AN ELECTRIC LINE CROSSING OVER
ST. HWY. #176 IN SECTION 6, TOWNSHIP 21 SOUTH,
RANGE 33 EAST & SECTION 31, TOWNSHIP 20 SOUTH,
RANGE 34 EAST, N.M.P.M., LBA COUNTY, NEW MEXICO

PROVIDING SURVEYING SERVICES
SINCE 1946
JOHN WEST SURVEYING COMPANY
412 N. DAL PASO HOBBS, N.M. 88240
(575) 393-3117 www.jwsc.biz
TBPLS# 10021000

SCALE
HORZ.: 1"=20'
VERT.: 1"=10'
Drawn By: ACK
Date: 2/17/16
W.O. No.: 16110133