



## HYDROGEN SULFIDE (H<sub>2</sub>S) CONTINGENCY PLAN

**Assumed 100 ppm ROE = 3000'**

100 ppm H<sub>2</sub>S concentration shall trigger activation of this plan.

### Emergency Procedures

In the event of a release of gas containing H<sub>2</sub>S, the first responder(s) must

- Isolate the area and prevent entry by other persons into the 100 ppm ROE.
- Evacuate any public places encompassed by the 100 ppm ROE.
- Be equipped with H<sub>2</sub>S monitors and air packs in order to control the release.
- Use the "buddy system" to ensure no injuries occur during the response
- Take precautions to avoid personal injury during this operation.
- Contact operator and/or local officials to aid in operation. See list of phone numbers attached.
- Have received training in the
  - o Detection of H<sub>2</sub>S, and
  - o Measures for protection against the gas,
  - o Equipment used for protection and emergency response.

### Ignition of Gas source

Should control of the well be considered lost and ignition considered, take care to protect against exposure to Sulfur Dioxide (SO<sub>2</sub>). Intentional ignition must be coordinated with the NMOCD and local officials. Additionally the NM State Police may become involved. NM State Police shall be the Incident Command on scene of any major release. Take care to protect downwind whenever this is an ignition of the gas.

### Characteristics of H<sub>2</sub>S and SO<sub>2</sub>

Common Name	Chemical Formula	Specific Gravity	Threshold Limit	Hazardous Limit	Lethal Concentration
Hydrogen Sulfide	H <sub>2</sub> S	1.189 Air = 1	10 ppm	100 ppm/hr	600 ppm
Sulfur Dioxide	SO <sub>2</sub>	2.21 Air = 1	2 ppm	N/A	1000 ppm

### Contacting Authorities

XTO Energy Inc's personnel must liaison with local and state agencies to ensure a proper response to a major release. Additionally, the OCD must be notified of the release as soon as possible but no later than 4 hours. Agencies will ask for information such as type and volume of release, wind direction, location of release, etc. Be prepared with all information available including directions to site. The following call list of essential and potential responders has been prepared for use during a release. (Operator Name)'s response must be in coordination with the State of New Mexico's "Hazardous Materials Emergency Response Plan" (HMER).

## **EUNICE OFFICE – EDDY & LEA COUNTIES**

EMSU @ Oil Center, NM, 8/10ths mile west of Hwy 8 on Hwy 175  
Eunice, NM

575-394-2089

### **XTO ENERGY INC PERSONNEL:**

Milton Turman, Sr. Drilling Superintendent	432-556-7403
Bob Chance, Drilling Superintendent	432-296-3926
Jeff Raines, Construction Foreman	432-557-3159
Dudley McMinn, EH & S Manager	432-557-7976
Rick Wilson, Production Foreman	575-441-1147

### **SHERIFF DEPARTMENTS:**

Eddy County	575-887-7551
Lea County	575-396-3611

### **NEW MEXICO STATE POLICE:**

575-392-5588

### **FIRE DEPARTMENTS:**

	911
Carlsbad	575-885-2111
Eunice	575-394-2111
Hobbs	575-397-9308
Jal	575-395-2221
Lovington	575-396-2359

### **HOSPITALS:**

	911
Carlsbad Medical Emergency	575-885-2111
Eunice Medical Emergency	575-394-2112
Hobbs Medical Emergency	575-397-9308
Jal Medical Emergency	575-395-2221
Lovington Medical Emergency	575-396-2359

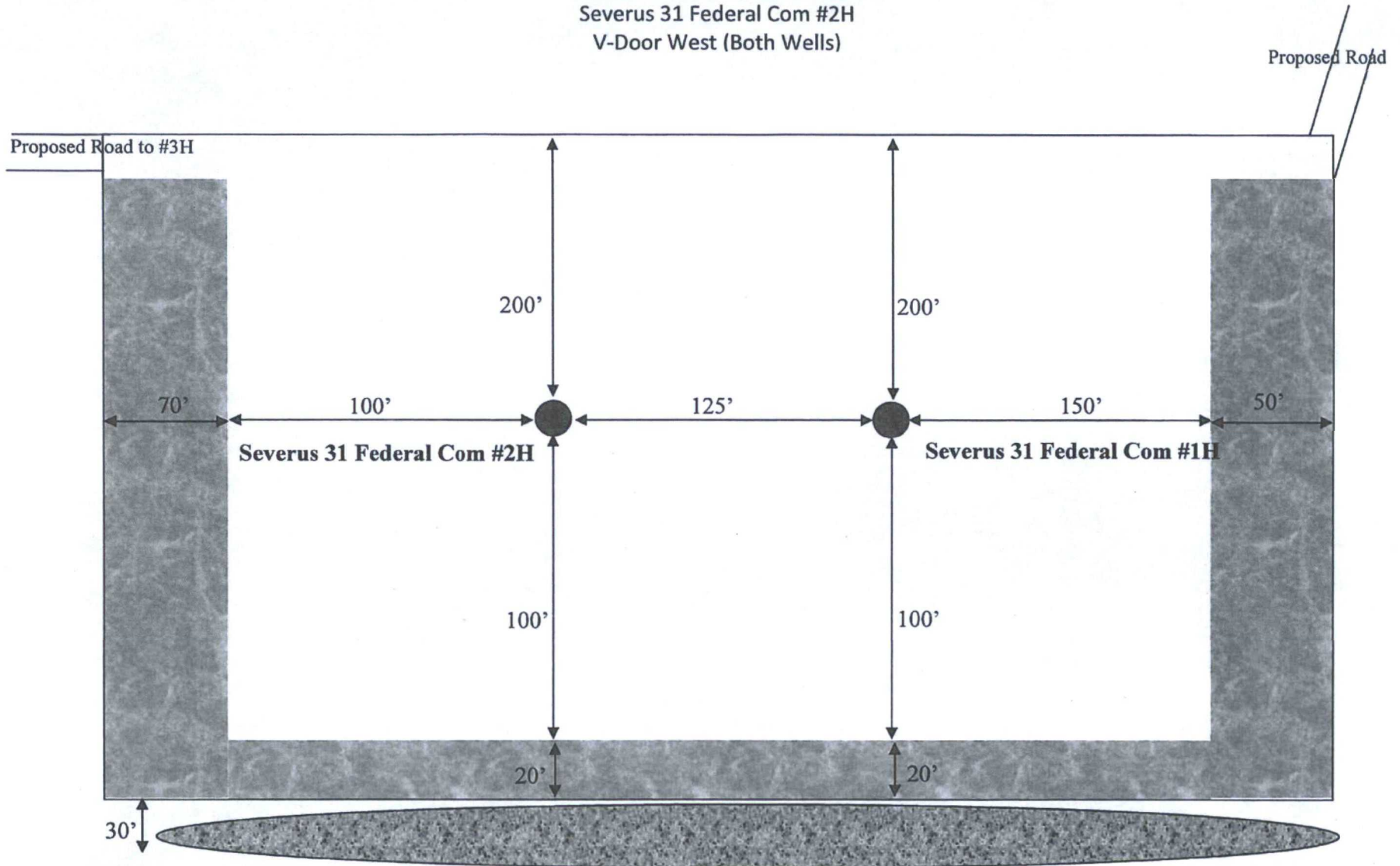
### **AGENT NOTIFICATIONS:**

Bureau of Land Management	575-393-3612
New Mexico Oil Conservation Division	575-393-6161
Mosaic Potash - Carlsbad	575-887-2871

### **CONTRACTORS:**

ABC Rental – Light Towers	575-394-3155
Bulldog Services – Trucking/Forklift	575-391-8543
Champion – Chemical	575-393-7726
Indian Fire & Safety	575-393-3093
Key – Dirt Contractor	575-393-3180
Key Tools – Light Towers	575-393-2415
Sweatt – Dirt Contractor	575-397-4541
RWI – Contract Gang	575-393-5305

**Interim Reclamation Diagram**  
Severus 31 Federal Com #2H  
V-Door West (Both Wells)



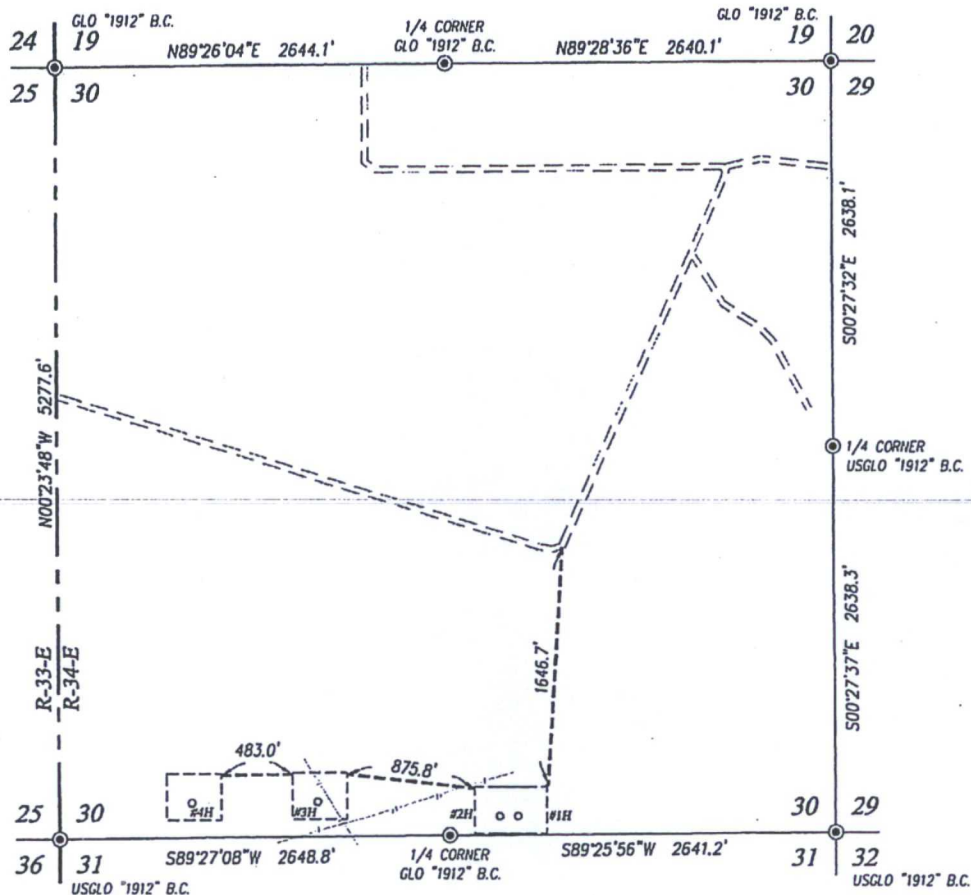
**LEGEND**

- Wellbore
- Interim Reclamation

- Ditch & Berm
- Topsoil



Trishia Bad Bear previously cleared this drill island with BC Operating and gave XTO Energy, Inc. verbal permission to stake the wells so long as they fell on the approved drilling island.



#### LEGEND:

- ⊙ DENOTES FOUND CORNER AS NOTED
- DENOTES PROPOSED WELL
- - - - - DENOTES ELECTRIC LINE
- ===== DENOTES PIPELINE
- ===== DENOTES EXISTING ROAD
- PROPOSED ROAD

#### NOTE

BEARINGS SHOWN HEREON ARE MERCATOR GRID AND CONFORM TO THE NEW MEXICO COORDINATE SYSTEM "NEW MEXICO EAST ZONE" NORTH AMERICAN DATUM 1983. DISTANCES ARE SURFACE VALUES.

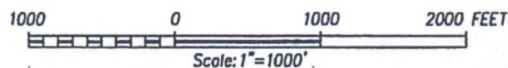
I, RONALD J. EIDSON, NEW MEXICO PROFESSIONAL SURVEYOR No. 3239, DO HEREBY CERTIFY THAT THIS SURVEY PLAT AND THE ACTUAL SURVEY ON THE GROUND UPON WHICH IT IS BASED WERE PERFORMED BY ME OR UNDER MY DIRECT SUPERVISION, THAT I AM RESPONSIBLE FOR THIS SURVEY; THAT THIS SURVEY MEETS THE MINIMUM STANDARDS FOR SURVEYING IN NEW MEXICO; AND THAT IT IS TRUE AND CORRECT TO THE BEST OF MY KNOWLEDGE AND BELIEF.

RONALD J. EIDSON

DATE: 02/04/2013

#### LEGEND

- ⊙ DENOTES FOUND CORNER AS NOTED



## XTO ENERGY

LEASE FLOW MAP FOR  
THE SEVERUS 31 FEDERAL COM LEASE  
LOCATED IN SECTIONS 30,  
TOWNSHIP 20 SOUTH, RANGE 34 EAST, N.M.P.M.  
LEA COUNTY, NEW MEXICO



PROVIDING SURVEYING SERVICES  
SINCE 1946  
**JOHN WEST SURVEYING COMPANY**  
412 N. DAL PASO HOBBS, N.M. 88240  
(575) 393-3117 www.jwsc.biz  
TBPLS# 10021000

Survey Date: 12/17/14

CAD Date: 1/30/15

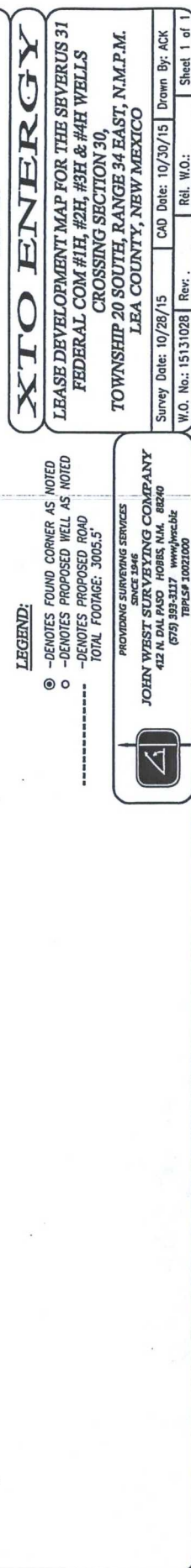
Drawn By: LSL

W.O. No.: 15130133

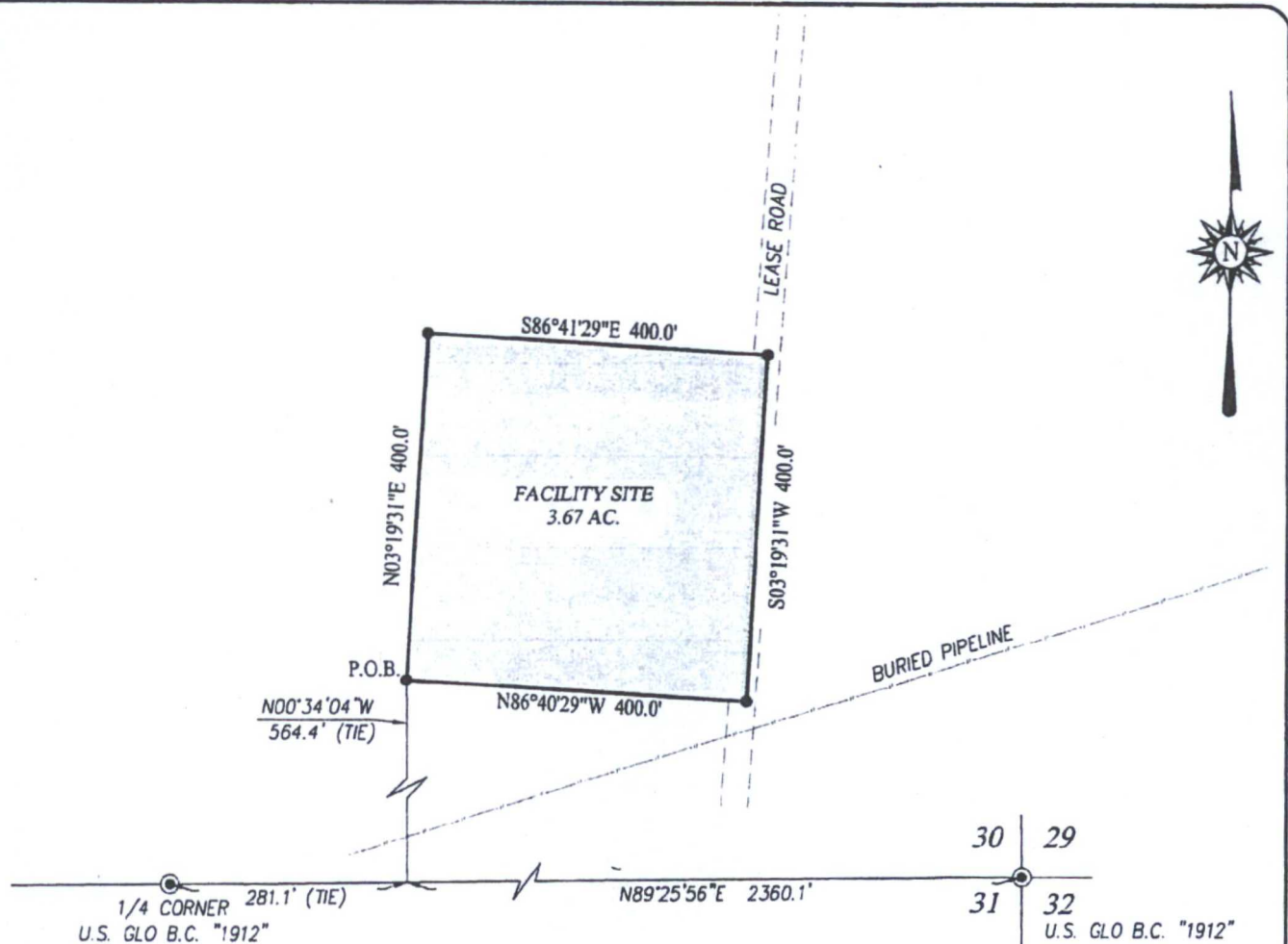
Rev. :

Rel. W.O.:

Sheet 1 of 1



© Anjelica\2015\XTO Energy\Topo\15131028 Lease Flow Diagram for the Servers 31 Federal Com 1H, 2H, 3H & 4H



### LEGEND

- DENOTES FOUND CORNER AS NOTED
- DENOTES TRACT CORNER

### NOTE

BEARINGS SHOWN HEREON ARE MERCATOR GRID AND CONFORM TO THE NEW MEXICO COORDINATE SYSTEM "NEW MEXICO EAST ZONE" NORTH AMERICAN DATUM 1983. DISTANCES ARE SURFACE VALUES.

I, RONALD J. EIDSON, NEW MEXICO PROFESSIONAL SURVEYOR No. 3239, DO HEREBY CERTIFY THAT THIS SURVEY PLAT AND THE ACTUAL SURVEY ON THE GROUND UPON WHICH IT IS BASED WERE PERFORMED BY ME OR UNDER MY DIRECT SUPERVISION; THAT I AM RESPONSIBLE FOR THIS SURVEY; THAT THIS SURVEY MEETS THE MINIMUM STANDARDS FOR SURVEYING IN NEW MEXICO; AND THAT IT IS TRUE AND CORRECT TO THE BEST OF MY KNOWLEDGE AND BELIEF.

RONALD J. EIDSON

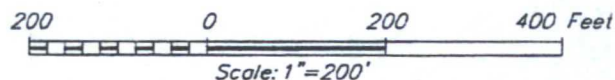
DATE:

07/30/2015

### DESCRIPTION:

A TRACT SITUATED IN THE SOUTHEAST QUARTER OF SECTION 31, TOWNSHIP 20 SOUTH, RANGE 34 EAST, N.M.P.M., LEA COUNTY, NEW MEXICO AND BEING MORE PARTICULARLY DESCRIBED AS FOLLOWS:

BEGINNING AT THE SOUTHWEST CORNER, WHICH LIES N89°25'56"E 281.1 FEET AND N00°34'04"W 564.4 FEET FROM THE SOUTH 1/4 CORNER; THEN N03°19'31"E 400.0 FEET; THEN S89°41'29"E 400.0 FEET; THEN S03°19'31"W 400.0 FEET; THEN N89°40'29"W 400.0 FEET TO THE POINT OF BEGINNING AND CONTAINING 3.67 ACRES MORE OR LESS.



## XTO ENERGY

SURVEY FOR A FACILITY SITE FOR THE SEVERUS  
FEDERAL LEASE SITUATED IN THE SE/4 OF SECTION 31,  
TOWNSHIP 20 SOUTH, RANGE 34 EAST, N.M.P.M.  
LEA COUNTY, NEW MEXICO

Survey Date: 7/14/15

CAD Date: 7/29/15

Drawn By: ACK

W.O. No.: 15110714

Rev.:

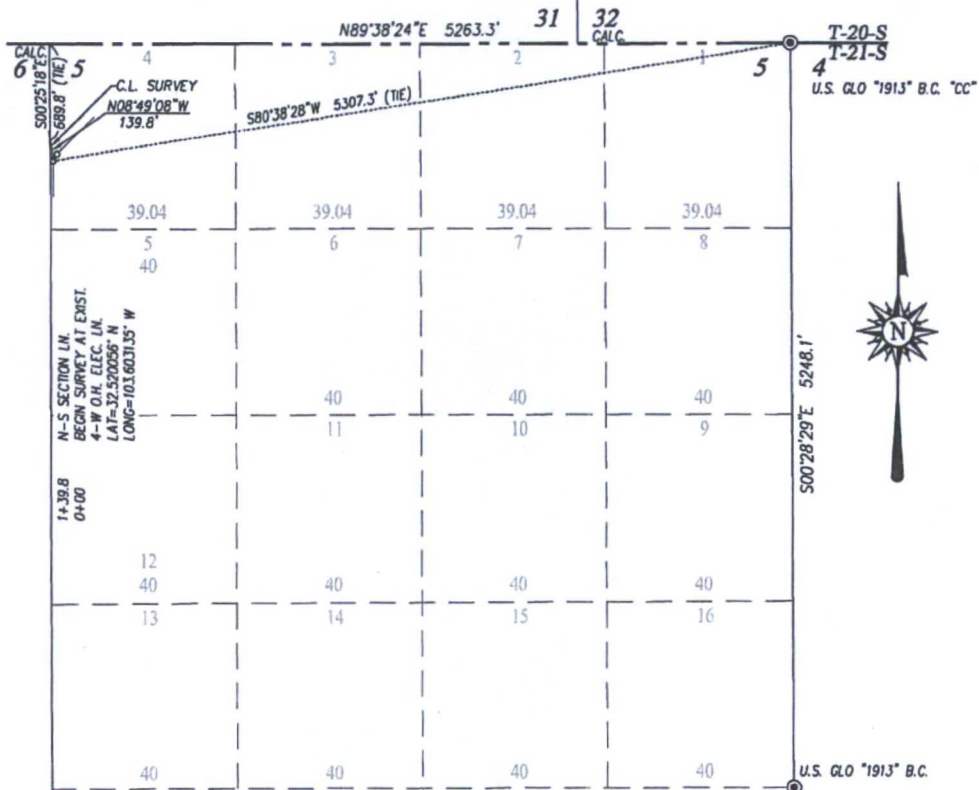
Rel. W.O.:

Sheet 1 of 1



PROVIDING SURVEYING SERVICES  
SINCE 1946  
**JOHN WEST SURVEYING COMPANY**  
412 N. DAL PASO HOBBS, N.M. 88240  
(575) 393-3117 www.jwsc.biz  
TBPLS# 10021000





#### DESCRIPTION

A STRIP OF LAND 30.0 FEET WIDE CROSSING STATE OF NEW MEXICO LAND IN SECTION 5, TOWNSHIP 21 SOUTH, RANGE 33 EAST, N.M.P.M., LEA COUNTY, NEW MEXICO, AND BEING 15.0 FEET LEFT AND 15.0 FEET RIGHT OF THE FOLLOWING DESCRIBED CENTERLINE SURVEY:

BEGINNING AT A POINT IN LOT 4 OF SAID SECTION 5, WHICH LIES S80°38'28"W 5307.3 FEET FROM THE NORTHEAST CORNER OF SAID SECTION; THEN N08°49'08"W 139.8 FEET TO A POINT ON THE WEST LINE OF SAID SECTION, WHICH LIES S00°25'18"E 689.8 FEET FROM THE NORTHWEST CORNER.

SAID STRIP OF LAND BEING 139.8 FEET OR 8.47 RODS IN LENGTH, CONTAINING 0.096 ACRES MORE OR LESS AND BEING ALLOCATED BY FOR RES AS FOLLOWS:

LOT 4 8.47 RODS OR 0.096 ACRES

6 5 STATE 5 4  
CALC. 7 8 8 9  
U.S. G.L.O. "1913" B.C.

#### NOTE

1) BEARINGS SHOWN HEREON ARE MERCATOR GRID AND CONFORM TO THE NEW MEXICO COORDINATE SYSTEM "NEW MEXICO EAST ZONE" NORTH AMERICAN DATUM 1983. DISTANCES ARE SURFACE VALUES.

2) LATITUDE AND LONGITUDE VALUES SHOWN HEREON ARE RELATIVE TO THE NORTH AMERICAN DATUM 1983 (NAD83).

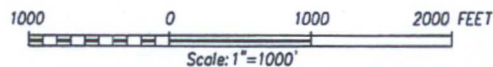
I, RONALD J. EIDSON, NEW MEXICO PROFESSIONAL SURVEYOR No. 3239, DO HEREBY CERTIFY THAT THIS SURVEY PLAT AND THE ACTUAL SURVEY ON THE GROUND UPON WHICH IT IS BASED WERE PERFORMED BY ME OR UNDER MY DIRECT SUPERVISION AND I AM RESPONSIBLE FOR THIS SURVEY; THAT THIS SURVEY MEETS THE MINIMUM STANDARDS FOR SURVEYING IN NEW MEXICO; AND THAT IT IS TRUE AND CORRECT TO THE BEST OF MY KNOWLEDGE AND BELIEF.

RONALD J. EIDSON *Ronald J. Eidson*

DATE: 3/14/2016

#### LEGEND

⊙ DENOTES FOUND CORNER AS NOTED



## XTO ENERGY

SURVEY FOR AN ELECTRIC LINE TO THE SEVERUS 31 FEDERAL #1H & #2H AND FACILITY SITE CROSSING SECTION 5, TOWNSHIP 21 SOUTH, RANGE 33 EAST, N.M.P.M., LEA COUNTY, NEW MEXICO

Survey Date: 2/17/16 CAD Date: 3/14/16 Drawn By: ACK

W.O. No.: 16110133 Rev. Rel. W.O.: Sheet 1 of 1



PROVIDING SURVEYING SERVICES SINCE 1946  
**JOHN WEST SURVEYING COMPANY**  
412 N. DAL PASO HOBBS, N.M. 88240  
(575) 393-3117 www.jwsc.biz  
TBPLS# 10021000



HWY. PROJECT NO. \_\_\_\_\_  
 DISTRICT UTILITY PERMIT NUMBER: \_\_\_\_\_  
 DATE OF COMPLETION OF SURVEY: 2/20/16  
 EQUIPMENT: TRIMBLE 5700 RTK GPS  
 REFERENCE MARKS: JMSC CPUS PT.  
 GROUND TO GRID COMBINED SCALE FACTOR: 0.9997864472  
 "TISC"

NOTE:  
 BEARINGS AND COORDINATE VALUES SHOWN HEREON ARE MERCATOR GRID  
 AND CONFORM TO THE NEW MEXICO COORDINATE SYSTEM "NEW MEXICO  
 EAST ZONE". NORTH AMERICAN DATUM OF 1983. DISTANCES ARE SURFACE  
 VALUES. ELEVATIONS ARE RELATIVE TO THE NORTH AMERICAN VERTICAL  
 DATUM 1988 (GEOID 2003).



I, RONALD J. EDSON, NEW MEXICO PROFESSIONAL SURVEYOR No. 3239,  
 DO HEREBY CERTIFY THAT THIS SURVEY PLAT AND THE ACTUAL SURVEY ON  
 THE GROUND UPON WHICH IT IS BASED WERE PERFORMED BY ME OR UNDER MY  
 DIRECT SUPERVISION; THAT I AM RESPONSIBLE FOR THIS SURVEY; THAT THIS  
 SURVEY MEETS THE MINIMUM STANDARDS FOR SURVEYING IN NEW MEXICO; AND  
 THAT IT IS TRUE AND CORRECT TO THE BEST OF MY KNOWLEDGE AND BELIEF.

RONALD J. EDSON *Ronald J. Edson*  
 DATE: 3/14/2016

**XTO ENERGY**

AN ELECTRIC LINE CROSSING OVER  
 ST. HWY. #176 IN SECTION 6, TOWNSHIP 21 SOUTH,  
 RANGE 33 EAST & SECTION 31, TOWNSHIP 20 SOUTH,  
 RANGE 34 EAST, N.M.P.M., LEA COUNTY, NEW MEXICO

PROVIDING SURVEYING SERVICES  
 SINCE 1946  
**JOHN WEST SURVEYING COMPANY**  
 412 N. DAL PASO HOBBS, N.M. 88240  
 (575) 393-3117 www.jwscble  
 TBLPS# 10021000

SCALE  
 HORZ.: 1"=20'  
 VERT.: 1"=10'  
 Drawn By: ACK  
 Date: 2/17/16  
 W.O. No.: 16110133

