

DISTRICT I  
1625 N. French Dr., Hobbs, NM 88240  
Phone (505) 393-6161 Fax: (505) 393-0720

DISTRICT II  
811 S. First St., Artesia, NM 88210  
Phone (505) 746-1263 Fax: (505) 746-9720

DISTRICT III  
1000 Rio Brazos Rd., Aztec, NM 87410  
Phone (505) 334-6178 Fax: (505) 334-6170

DISTRICT IV  
1220 S. St. Francis Dr., Santa Fe, NM 87505  
Phone (505) 476-3460 Fax: (505) 476-3462

**HOBBS OCD**

State of New Mexico  
Energy, Minerals and Natural Resources Department

Form C-102  
Revised August 1, 2011

Submit one copy to appropriate  
District Office

SEP 12 2016

**RECEIVED**

**CONSERVATION DIVISION**

1220 South St. Francis Dr.  
Santa Fe, New Mexico 87505

**WELL LOCATION AND ACREAGE DEDICATION PLAT**

☐ AMENDED REPORT

API Number 30-025-43023	Pool Code 98098	Pool Name WC-025 G-09 S243532M; Wolfbone
Property Code 315757	Property Name FASCINATOR FEE COM	Well Number 2H
OGRID No. 229137	Operator Name COG OPERATING, LLC	Elevation 3318

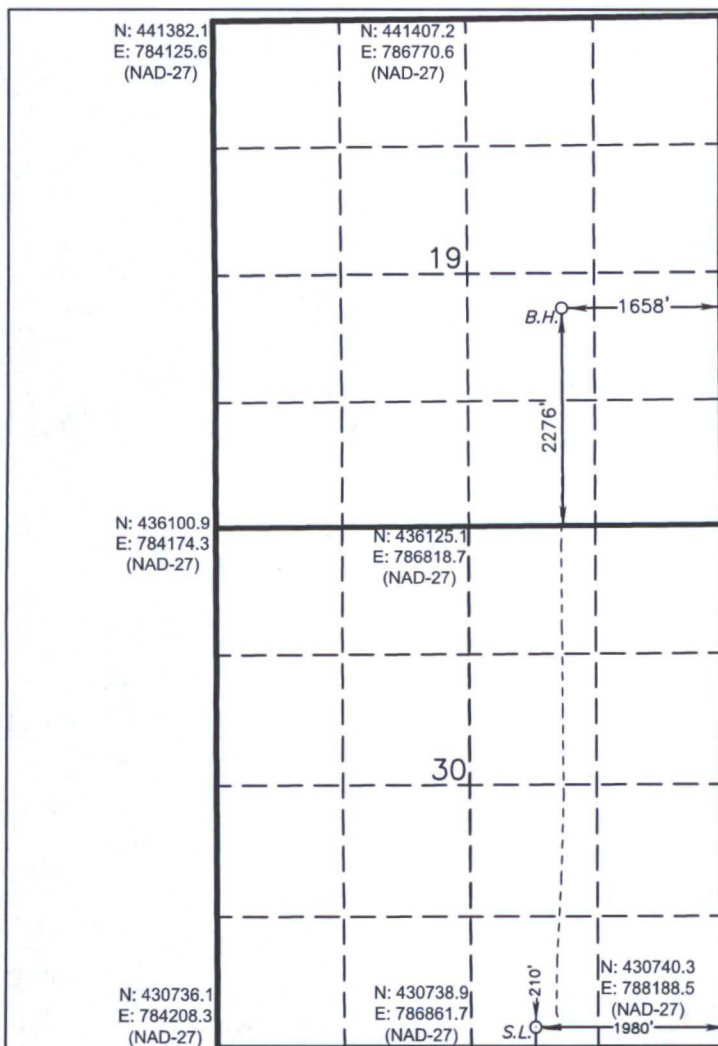
**Surface Location**

UL or lot No.	Section	Township	Range	Lot Idn	Feet from the	North/South line	Feet from the	East/West line	County
O	30	24 S	35 E		210	SOUTH	1980	EAST	LEA

**Bottom Hole Location If Different From Surface**

UL or lot No.	Section	Township	Range	Lot Idn	Feet from the	North/South line	Feet from the	East/West line	County
J	19	24 S	35 E		2276	SOUTH	1658	EAST	LEA
Dedicated Acres 240	Joint or Infill	Consolidation Code	Order No.						

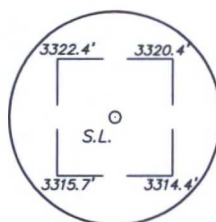
**NO ALLOWABLE WILL BE ASSIGNED TO THIS COMPLETION UNTIL ALL INTERESTS HAVE BEEN CONSOLIDATED  
OR A NON-STANDARD UNIT HAS BEEN APPROVED BY THE DIVISION**



N: 441443.2  
E: 789435.9  
(NAD-27)

**BOTTOM HOLE LOCATION**  
Lot - N 32.201883°  
Long - W 103.402957°  
NMSPC- N 438410.0  
E 787783.5  
(NAD-27)

N: 436149.4  
E: 789463.2  
(NAD-27)



**SURFACE LOCATION**  
Lot - N 32.181382°  
Long - W 103.403975°  
NMSPC- N 430949.6  
E 787533.3  
(NAD-27)

N: 430741.7  
E: 789515.1  
(NAD-27)

**OPERATOR CERTIFICATION**

I hereby certify that the information contained herein is true and complete to the best of my knowledge and belief, and that this organization either owns a working interest or unleased mineral interest in the land including the proposed bottom hole location or has a right to drill this well at this location pursuant to a contract with an owner of such a mineral or working interest, or to a voluntary pooling agreement or a compulsory pooling order heretofore entered by the division.

*Stormi Davis* 7/28/16  
Signature Date

Stormi Davis

Printed Name  
sdavis@concho.com

Email Address

**SURVEYOR CERTIFICATION**

I hereby certify that the well location shown on this plat was plotted from field notes of actual surveys made by me or under my supervision, and that the same is true and correct to the best of my belief.

SEPTEMBER 12 2015

Date Surveyed  
Signature & Seal of Professional Surveyor

Certificate No. Gary L. Jones 7977  
Professional Surveyor

0' 500' 1000' 1500' 2000'  
SCALE: 1" = 1000'  
WO Num.: 31935