

District I  
1625 N. French Dr., Hobbs, NM 88240  
Phone: (575) 393-6161 Fax: (575) 393-0720  
District II  
811 S. First St., Artesia, NM 88210  
Phone: (575) 748-1283 Fax: (575) 748-9720  
District III  
1000 Rio Brazos Road, Aztec, NM 87410  
Phone: (505) 334-6178 Fax: (505) 334-6170  
District IV  
1220 S. St. Francis Dr., Santa Fe, NM 87505  
Phone: (505) 476-3460 Fax: (505) 476-3462

State of New Mexico  
Energy, Minerals & Natural Resources Department  
OIL CONSERVATION DIVISION  
1220 South St. Francis Dr.  
Santa Fe, NM 87505

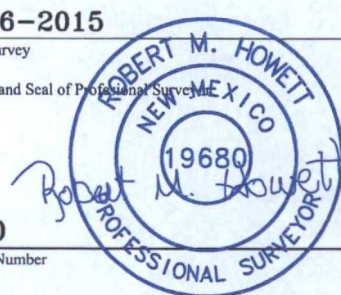
Form C-102  
Revised August 1, 2011  
Submit one copy to appropriate  
District Office

☐ AMENDED REPORT

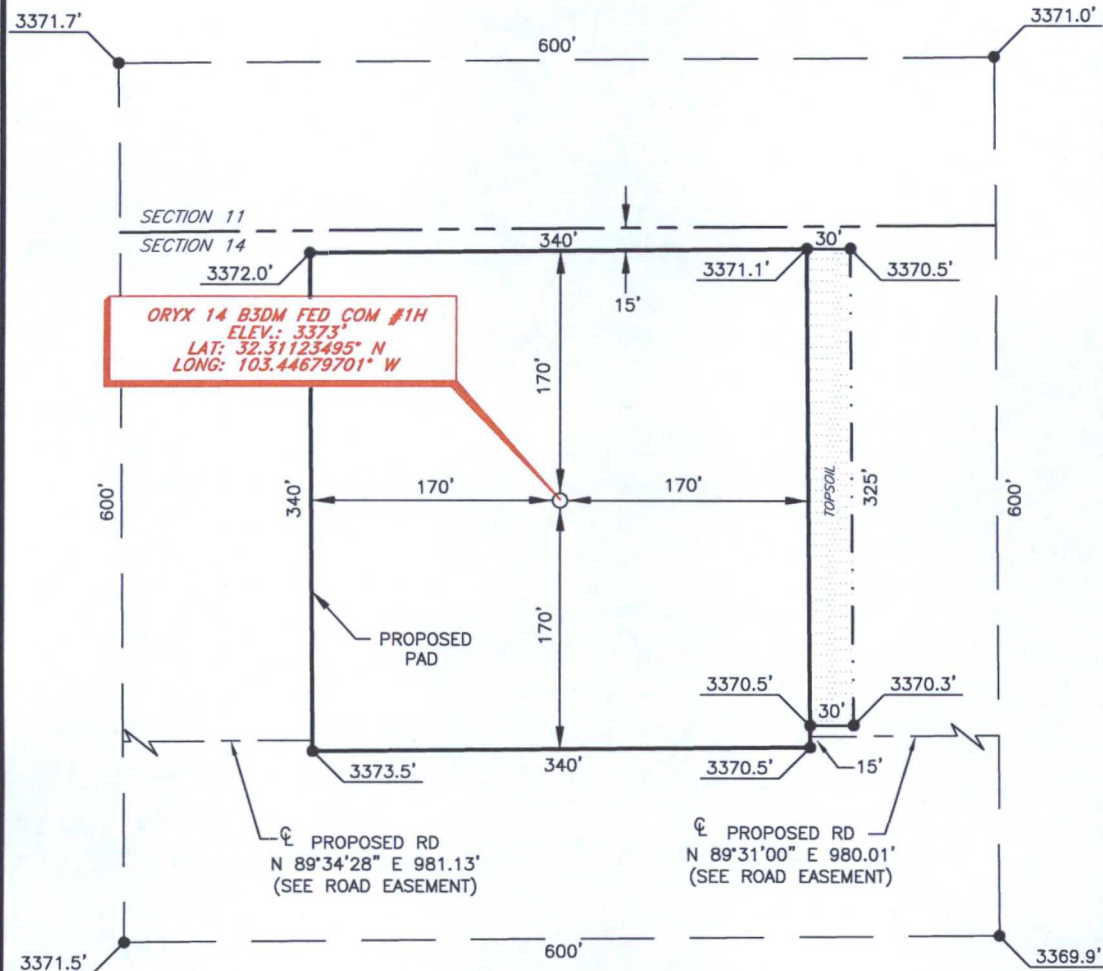
WELL LOCATION AND ACREAGE DEDICATION PLAT

<sup>1</sup> API Number <b>30-025-43424</b>		<sup>2</sup> Pool Code <b>395642209</b>		<sup>3</sup> Pool Name <b>ANTELOPE RIDGE WEST BONE SPRING</b>	
<sup>4</sup> Property Code		<sup>5</sup> Property Name <b>ORYX 14 B3DM FED COM</b>			<sup>6</sup> Well Number <b>1H</b>
<sup>7</sup> OGRID NO. <b>14744</b>		<sup>8</sup> Operator Name <b>MEWBOURNE OIL COMPANY</b>			<sup>9</sup> Elevation <b>3373'</b>
<sup>10</sup> Surface Location					
UL or lot no. <b>D</b>	Section <b>14</b>	Township <b>23S</b>	Range <b>34E</b>	Lot Idn	Feet from the <b>185</b>
				North/South line <b>NORTH</b>	Feet From the <b>660</b>
				East/West line <b>WEST</b>	County <b>LEA</b>
<sup>11</sup> Bottom Hole Location If Different From Surface					
UL or lot no. <b>M</b>	Section <b>14</b>	Township <b>23S</b>	Range <b>34E</b>	Lot Idn	Feet from the <b>330</b>
				North/South line <b>SOUTH</b>	Feet from the <b>660</b>
				East/West line <b>WEST</b>	County <b>LEA</b>
<sup>12</sup> Dedicated Acres <b>160</b>		<sup>13</sup> Joint or Infill		<sup>14</sup> Consolidation Code	
<sup>15</sup> Order No.					

No allowable will be assigned to this completion until all interest have been consolidated or a non-standard unit has been approved by the division.

<sup>16</sup> (C) N 89°31'12" E 2642.00' 660' 185' S. L. SEE DETAIL "A" Project Area DETAIL "A" 3371.7' 600' 3371.0' 600' S. L. 3371.5' 3369.9' 14 Producing Area S 00°30'40" E (GRID) 4,763.78' (HORIZ.) WELL PATH S 00°30'09" W 2639.52' 660' B. H. 330' S 89°30'59" W 2643.99' (A)		N 89°30'11" E 2643.09' GEODETIC DATA NAD 27 GRID - NM EAST SURFACE LOCATION N 478076.6 - E 773893.9 LAT: 32.31123495° N LONG: 103.44679701° W BOTTOM HOLE N 473313.3 - E 773936.4 CORNER DATA NAD 27 GRID - NM EAST A: FOUND BRASS CAP "1918" N 472977.8 - E 773279.4 B: FOUND BRASS CAP "1918" N 475616.8 - E 773256.3 C: FOUND BRASS CAP "1918" N 478256.0 - E 773232.4 D: FOUND BRASS CAP "1918" N 478278.2 - E 775873.9 E: FOUND BRASS CAP "1918" N 478301.1 - E 778516.5 F: FOUND BRASS CAP "1918" N 475661.1 - E 778543.0 G: FOUND BRASS CAP "1918" N 473021.5 - E 778565.5 H: FOUND BRASS CAP "1918" N 473000.1 - E 775922.9 (H) S 89°32'10" W 2643.09' (G)		<sup>17</sup> OPERATOR CERTIFICATION I hereby certify that the information contained herein is true and complete to the best of my knowledge and belief, and that this organization either owns a working interest or unleased mineral interest in the land including the proposed bottom hole location or has a right to drill this well at this location pursuant to a contract with an owner of such a mineral or working interest, or to a voluntary pooling agreement or a compulsory pooling order heretofore entered by the division. Signature <b>B. Bishop</b> Date <b>9-29-15</b> Printed Name <b>BRADLEY BISHOP</b> E-mail Address	
<sup>18</sup> SURVEYOR CERTIFICATION I hereby certify that the well location shown on this plat was plotted from field notes of actual surveys made by me or under my supervision, and that the same is true and correct to the best of my belief. <b>6-26-2015</b> Date of Survey Signature and Seal of Professional Surveyor <b>19680</b> Certificate Number					

MEWBOURNE OIL COMPANY  
ORYX 14 B3DM FED COM #1H  
(185' FNL & 660' FWL)  
SECTION 14, T23S, R34E  
N. M. P. M., LEA CO., NEW MEXICO



DIRECTIONS TO LOCATION

From the intersection of CR- 21 (Delaware Basin Road) and Adobe Road (E-21);  
Go South on Adobe Road approx. 1.1 miles to a lease road on the left;  
Turn left and go East approx. 0.2 miles to the proposed Pronghorn 15 B3AP Fed Com #1H pad;  
Turn right and go Southeast approx. 470 feet to the Southeast pad corner and beginning of proposed road;  
Turn left and go East following proposed road approx. 0.2 miles:  
Location is on the left.

SCALE: 1" = 100'  
0 50 100  
BEARINGS ARE  
NAD 27 GRID - NM EAST  
DISTANCES ARE  
GROUND.

Firm No.: TX 10193838 NM 4655451

Copyright 2015 - All Rights Reserved

NO.	REVISION	DATE
JOB NO.:	LS1506291	
DWG. NO.:	1506291PAD	

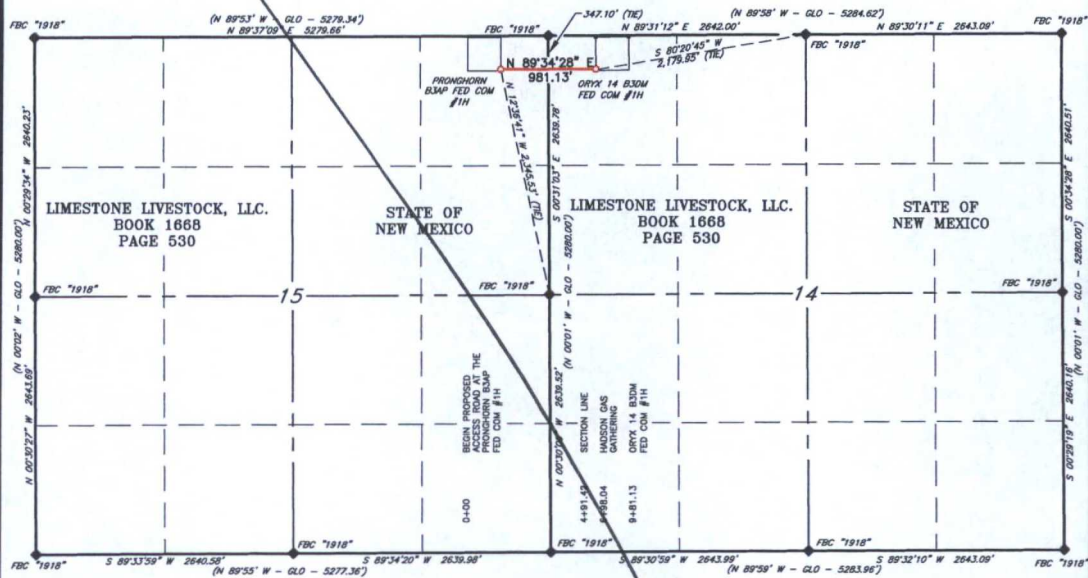
RRC

308 W. BROADWAY ST., HOBBS, NM 88240 (575) 964-8200

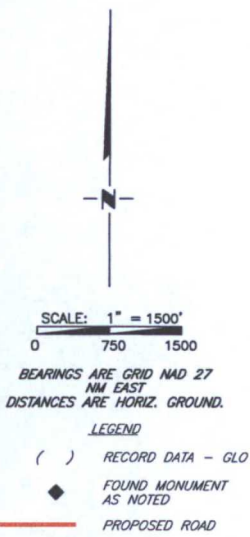
SCALE: 1" = 100'
DATE: 6-26-15
SURVEYED BY: ML/AA
DRAWN BY: JC
APPROVED BY: RMH
SHEET : 1 OF 1



**MEWBOURNE OIL COMPANY  
PROPOSED ACCESS ROAD FOR THE ORYX 14 B3DM FED COM #1H  
SECTIONS 14 & 15, T23S, R34E,  
N. M. P. M., LEA CO., NEW MEXICO**



**OVERALL**



Firm No.: TX 10193838 NM 4655451

Copyright 2014 - All Rights Reserved

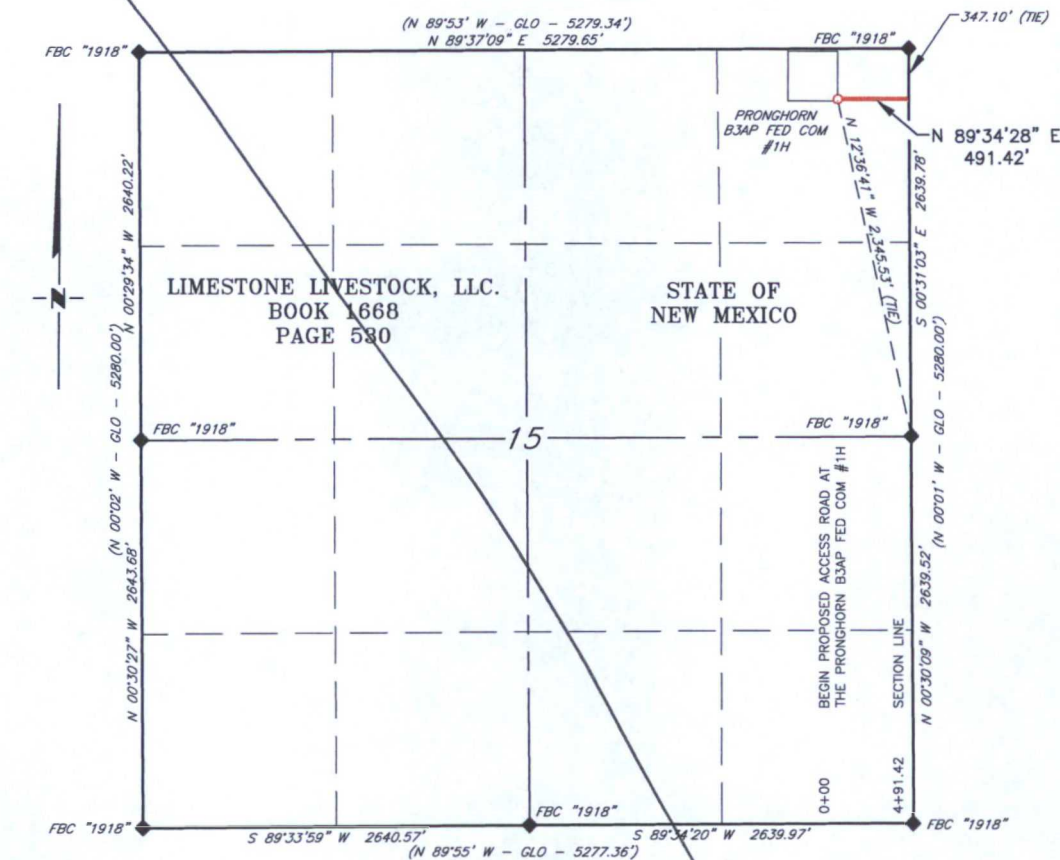
NO.	REVISION	DATE
JOB NO.:	LS1506291	
DWG. NO.:	15062910A	

**RRC**

308 W. BROADWAY ST., HOBBS, NM 88240 (575) 964-8200

SCALE:	1"=1500'
DATE:	6-26-15
SURVEYED BY:	ML/AA
DRAWN BY:	JC
APPROVED BY:	RMH
SHEET :	1 of 3

**MEWBOURNE OIL COMPANY**  
**PROPOSED ACCESS ROAD FOR THE ORYX 14 B3DM FED COM #1H**  
**SECTION 15, T23S, R34E,**  
**N. M. P. M., LEA CO., NEW MEXICO**



**DESCRIPTION**

A strip of land 20 feet wide, being 491.42 feet or 29.783 rods in length lying in Section 15, Township 23 South, Range 34 East, N. M. P. M., Lea County, New Mexico, being 10 feet left and 10 feet right of the following described survey of a centerline across State of New Mexico lands:

BEGINNING at Engr. Sta. 0+00, a point in the Northeast quarter of Section 15, which bears N 12°36'41" W 2,345.53 feet from a brass cap, stamped "1918", found for the East quarter corner of Section 15;

Thence N 89°34'28" E, 491.42 feet, to Engr. Sta. 4+91.42, a point on the East line of Section 15, which bears S 00°31'03" E, 347.10 feet from a brass cap, stamped "1918", found for the Northeast corner of Section 15.

Said strip of land contains 0.226 acres, more or less, and is allocated by forties as follows::

NE 1/4 NE 1/4                      29.783 Rods                      0.226 Acres

SCALE: 1" = 1000'  
0                      500                      1000

BEARINGS ARE GRID NAD 27  
NM EAST  
DISTANCES ARE HORIZ. GROUND.

**LEGEND**

- ( ) RECORD DATA - GLO
- ◆ FOUND MONUMENT AS NOTED
- PROPOSED ROAD

I, R. M. Howett, a N. M. Professional Surveyor, hereby certify that I prepared this plat from an actual survey made on the ground under my direct supervision, said survey and plat meet the Min. Stds. for Land Surveying in the State of N. M. and are true and correct to the best of my knowledge and belief.

*Robert M. Howett*  
Robert M. Howett                      NM PS 19680



Firm No.: TX 10193838 NM 4655451

Copyright 2014 - All Rights Reserved

NO.	REVISION	DATE
JOB NO.:	LS1506291	
DWG. NO.:	1506291RD1	

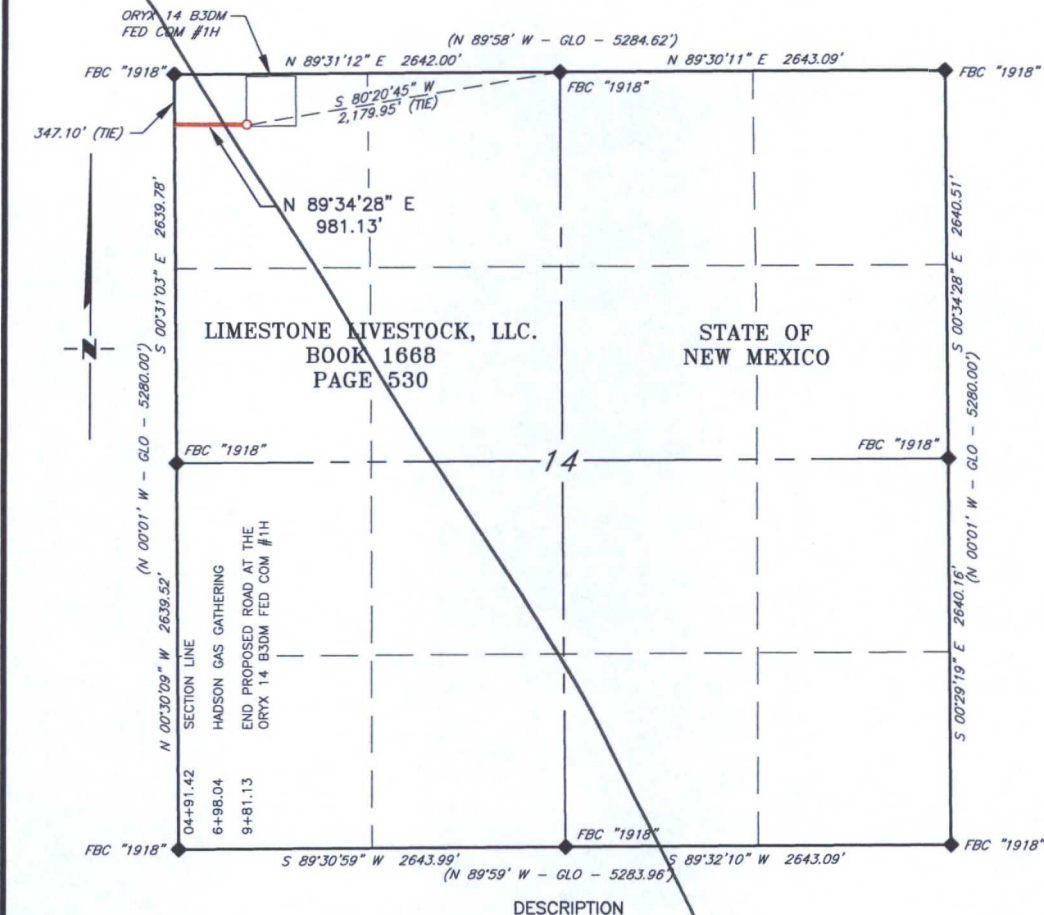
**RRC**

308 W. BROADWAY ST., HOBBS, NM 88240 (575) 964-8200

SCALE: 1"=1000'
DATE: 6-26-15
SURVEYED BY: ML/AA
DRAWN BY: JC
APPROVED BY: RMH
SHEET : 2 OF 3



**MEWBOURNE OIL COMPANY**  
**PROPOSED ACCESS ROAD FOR THE ORYX 14 B3DM FED COM #1H**  
**SECTION 14, T23S, R34E,**  
**N. M. P. M., LEA CO., NEW MEXICO**



A strip of land 20 feet wide, being 489.71 feet or 29.679 rods in length lying in Section 14, Township 23 South, Range 34 East, N. M. P. M., Lea County, New Mexico, being 10 feet left and 10 feet right of the following described survey of a centerline across the lands of Limestone Livestock LLC., according to deed filed for record, in Book 1668, Page 530, of the Deed Records of Lea County, New Mexico;

BEGINNING at Engr. Sta. 4+91.42, a point on the West line of Section 14, which bears S 00°31'03" E, 347.10 feet from a brass cap, stamped "1918", found for the Northwest corner of Section 14;

Thence N 89°31'00" E, 489.71 feet to Engr. Sta. 9+81.13, the End of Survey, a point which bears S 80°20'45" W, 2,179.95 feet from a brass cap, stamped "1918", found for the North quarter corner of Section 14.

Said strip of land contains 0.225 acres, more or less, and is allocated by forties as follows::

NW 1/4 NW 1/4      29.679 Rods      0.225 Acres

SCALE: 1" = 1000'  
0      500      1000  
BEARINGS ARE GRID NAD 27  
NM EAST  
DISTANCES ARE HORIZ. GROUND.  
LEGEND  
( ) RECORD DATA - GLO  
◆ FOUND MONUMENT  
AS NOTED  
— PROPOSED ROAD

I, R. M. Howett, a N. M. Professional Surveyor, hereby certify that I prepared this plat from an actual survey made on the ground under my direct supervision, said survey and plat meet the Min. Stds. for Land Surveying in the State of N. M. and are true and correct to the best of my knowledge and belief.

*Robert M. Howett*  
Robert M. Howett      NM PS 19680



Firm No.: TX 10193838 NM 4655451

Copyright 2014 - All Rights Reserved

NO.	REVISION	DATE
JOB NO.:	LS1506291	
DWG. NO.:	1506291RD1	

**RRC**

308 W. BROADWAY ST., HOBBS, NM 88240 (575) 964-8200

SCALE:	1"=1000'
DATE:	6-26-15
SURVEYED BY:	ML/AA
DRAWN BY:	JC
APPROVED BY:	RMH
SHEET :	3 OF 3

[illegible]

LINE TABLE		
LINE	BEARING	LENGTH
L1	S 01°23'15" W	25.34'
L2	S 14°42'07" E	177.10'
L3	S 09°26'53" E	76.83'
L4	S 00°34'16" E	4.943.44'

SCALE: 1" = 1000'

0 500' 1000'

BEARINGS ARE GRID NAD 27



**MEWBOURNE OIL COMPANY**  
**ACCESS ROAD FOR THE ORYX 14 B3CN FED COM #1H AND**  
**THE ORYX 14 B3DM FED COM #1H**  
**SECTION 11, T23S, R34E,**  
**N. M. P. M., LEA CO., NEW MEXICO**

DESCRIPTION

A strip of land 20 feet wide, being 5,222.71 feet or 316.528 rods in length, lying in Section 11, Township 23 South, Range 34 East, N. M. P. M., Lea County, New Mexico, being 10 feet left and 10 feet right of the following described survey of a centerline across the lands of Limestone Livestock, LLC., according to a deed filed for record in Book 1668, Page 530, of the Deed Records of Lea County, New Mexico:

BEGINNING at Engr. Sta. 0+00, a point in the Northeast quarter of Section 11, which bears, N 55°43'56" E, 4,684.81 feet from a brass cap, stamped "1918", found for the West quarter corner of Section 11;

Thence S 01°23'15" W, 25.34 feet, to a point;

Thence S 14°42'07" E, 177.10 feet, to a point;

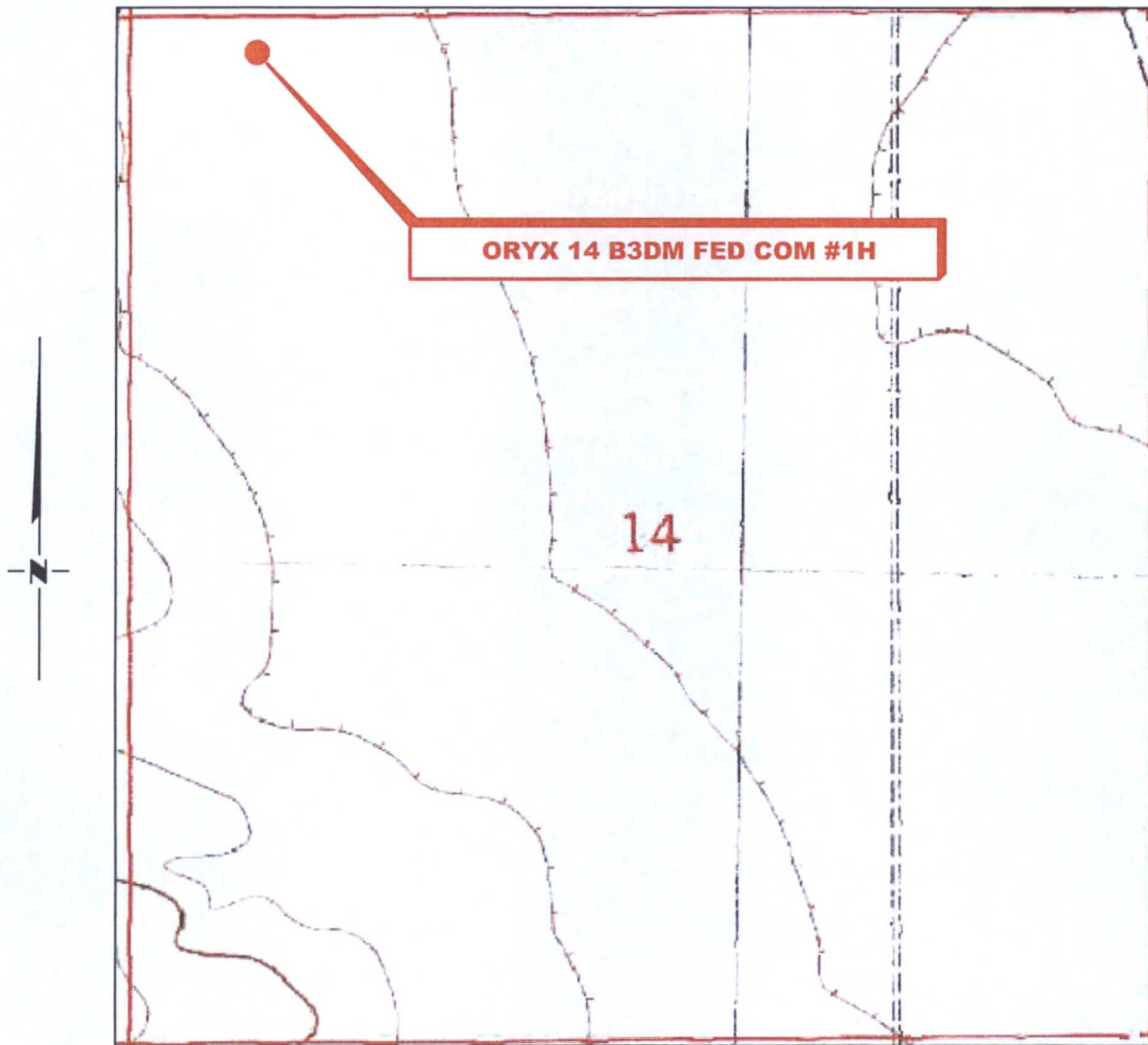
Thence S 09°26'53" E, 76.83 feet, to a point;

Thence S 00°34'16" E, 4,943.44 feet, the End of Survey, a point in the Southeast quarter of Section 11, which bears, S 26°31'51" W, 2,930.62 feet from a brass cap, stamped "1918", found for the East quarter corner of Section 11.

Said strip of land contains 2.398 acres, more or less, and is allocated by forties as follows:

NW 1/4 NE 1/4	78.336 Rods	0.593 Acres
SW 1/4 NE 1/4	79.951 Rods	0.606 Acres
NW 1/4 SE 1/4	80.018 Rods	0.606 Acres
SW 1/4 SE 1/4	78.223 Rods	0.593 Acres

# LOCATION VERIFICATION MAP



*SECTION 14, TWP. 23 SOUTH, RGE. 34 EAST,  
N. M. P. M., LEA COUNTY, NEW MEXICO*

OPERATOR: Mewbourne Oil Company  
LEASE: Oryx 14 B3DM Fed Com  
WELL NO.: 1H  
ELEVATION: 3373'

LOCATION: 185' FNL & 660' FWL  
CONTOUR INTERVAL: 10'  
USGS TOPO. SOURCE MAP:  
San Simon Sink, NM (1984)

Firm No.: TX 10193838 NM 4655451

Copyright 2015 - All Rights Reserved

NO.	REVISION	DATE
JOB NO.:	LS1506291	
DWG. NO.:	1506291VM	

## RRC

308 W. BROADWAY ST., HOBBS, NM 88240 (575) 964-8200

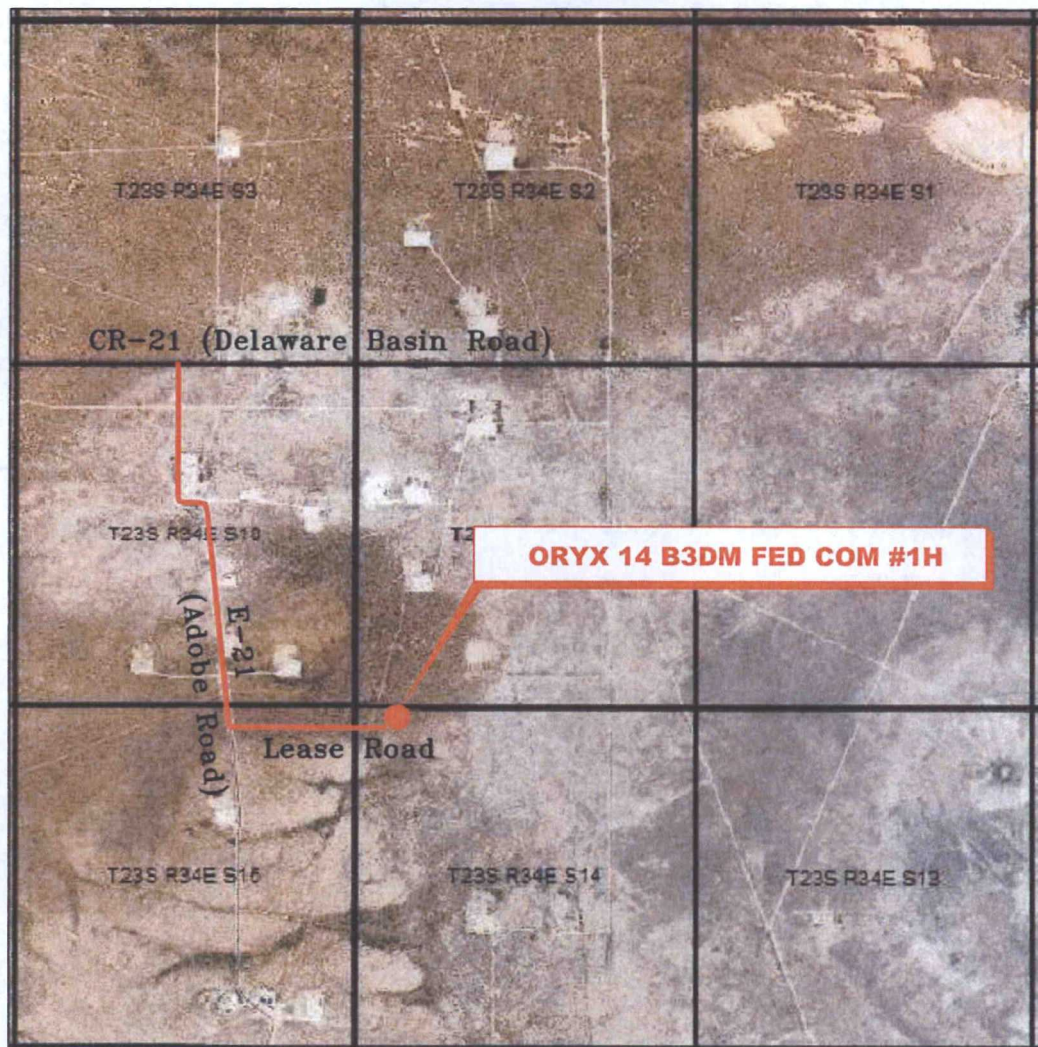
SCALE: N.T.S.
DATE: 6-26-15
SURVEYED BY: ML/AA
DRAWN BY: JC
APPROVED BY: RMH
SHEET : 1 OF 1



3E

# VICINITY MAP

NOT TO SCALE



SECTION 14, TWP. 23 SOUTH, RGE. 34 EAST,  
N. M. P. M., LEA COUNTY, NEW MEXICO

OPERATOR: Mewbourne Oil Company

LEASE: Oryx 14 B3DM Fed Com

WELL NO.: 1H

LOCATION: 185' FNL & 660' FWL

ELEVATION: 3373'

Firm No.: TX 10193838 NM 4655451

Copyright 2015 - All Rights Reserved

NO.	REVISION	DATE
JOB NO.: LS1506291		
DWG. NO.: 1506291VM		

# RRC

308 W. BROADWAY ST., HOBBS, NM 88240 (575) 964-8200

SCALE: N.T.S.

DATE: 6-26-15

SURVEYED BY: ML/AA

DRAWN BY: JC

APPROVED BY: RMH

SHEET : 1 OF 1