

District I - (575) 393-6161
1625 N. French Dr., Hobbs, NM 88240
District II - (575) 748-1283
811 S. First St., Artesia, NM 88210
District III - (505) 334-6178
1000 Rio Brazos Rd., Aztec, NM 87410
District IV - (505) 476-3460
1220 S. St. Francis Dr., Santa Fe, NM 87505

HOBBS OGD

OCT 04 2016

RECEIVED

OIL CONSERVATION DIVISION
1220 South St. Francis Dr.
Santa Fe, NM 87505

WELL API NO.

30-025-30961

5. Indicate Type of Lease

STATE ☒ FEE ☐

6. State Oil & Gas Lease No.

7. Lease Name or Unit Agreement Name

WEST LOVINGTON UNIT

8. Well Number: 69

9. OGRID Number

4323 241333

10. Pool name or Wildcat

W. LOVINGTON; UPPER SA

SUNDRY NOTICES AND REPORTS ON WELLS

(DO NOT USE THIS FORM FOR PROPOSALS TO DRILL OR TO DEEPEN OR PLUG BACK TO A DIFFERENT RESERVOIR. USE "APPLICATION FOR PERMIT" (FORM C-101) FOR SUCH PROPOSALS.)

1. Type of Well: Oil Well ☒ Gas Well ☐ Other

2. Name of Operator

Chevron U.S.A. INC. midcontinent L.P.

3. Address of Operator

6301 DEAUVILLE BLVD, MIDLAND, TX 79706 RMN3002

4. Well Location

Unit Letter C : 1305 feet from the NORTH line and 2575 feet from the WEST line
Section 7 Township 17S Range 36E NMPM County Lea

11. Elevation (Show whether DR, RKB, RT, GR, etc.)
GL 3905'

12. Check Appropriate Box to Indicate Nature of Notice, Report or Other Data

NOTICE OF INTENTION TO:

PERFORM REMEDIAL WORK ☐ PLUG AND ABANDON ☒
TEMPORARILY ABANDON ☐ CHANGE PLANS ☐
PULL OR ALTER CASING ☐ MULTIPLE COMPL ☐
DOWNHOLE COMMINGLE ☐

OTHER: ☐

SUBSEQUENT

REMEDIAL WORK ☐
COMMENCE DRILLING OPNS. ☐
CASING/CEMENT JOB ☐

OTHER: ☐

INT TO PA 3C ✓
P&A NR
P&A R

13. Describe proposed or completed operations. (Clearly state all pertinent details, and give pertinent dates, including estimated date of starting any proposed work). SEE RULE 19.15.7.14 NMAC. For Multiple Completions: Attach wellbore diagram of proposed completion or recompletion.

1. Call and notify NMOCD 24 hrs. before operations begin.
 2. MIRU. NDWH. NU BOPE.
 3. Tag plug@4,446' and circulate well w/9.5 ppg mud and spot 25sx of cement on top.
 4. Spot 45sx of Class "C" cement from 3,200'-2,850', WOC&Tag. (Yates/B.Salt)
 5. Spot 25sx of Class "C" cement from 2,100'-1,900', WOC&Tag. (T.Salt)
 6. Spot 50sx of Class "C" cement from 425' to surface. (Shoe/Fr. Wtr./surface).
 7. Cut off wellhead and anchors 3' below grade. Weld on dryhole marker and clean location.
- Closed loop above ground tank system will be used for fluids.

Verify cement to surface
all strings

NOTIFY OCD 24 HOURS PRIOR TO BEGINNING
PLUGGING OPERATIONS

I hereby certify that the information above is true and complete to the best of my knowledge.

SIGNATURE M. Lee Roark TITLE Project Manager DATE 09/28/16Type or print name M. Lee Roark E-mail address: LRoark@Chevron.com PHONE: (432)-687-7279

For State Use Only

APPROVED BY: Mark Whitaker TITLE Petroleum Engr. Specialist DATE 10/5/2016

Conditions of Approval (if any):

CURRENT WELLBORE DIAGRAM
WLU 69

Created: 07/25/16 By: MKHS
 Updated: By:
 Lease: West Lovington Unit
 Field: West Lovington Upper San Andres
 Surf. Loc.: 1305' FNL 2575' FWL
 Bot. Loc.:
 County: Lea St.: NM
 Status: TA'd Producing Well

Well #: 69 St. Lse:
 API 30-025-30961
 Unit Ltr.: F Section: 7
 TSHP/Rng: 17S 36E
 Pool Code: OGRID: 4323
 Directions: Lovington, NM
 Chevno: OM1992

Surface Casing

Size: 8 5/8"
 Wt., Grd.: 24#
 Depth: 368'
 Sxs Cmt: 275sx
 Circulate: Yes
 TOC: Surface
 Hole Size: 12-1/4"

Production Casing

Size: 5 1/2"
 Wt., Grd.: 15.5#
 Depth: 5240'
 Sxs Cmt: 785sx
 Circulate: Yes
 TOC: Surface
 Hole Size: 7 7/8"

Perf Details:

2 SPF, 180 Degree Phasing, 22.7 gm
 4734-42, 48-53, 4793-4803, 4956-59, 70-
 74, 77-80, 84-88, 5006-08, 16-21, 42-52,
 52-56, 5100-10, 12-18, 38-44

KB:
 DF:
 GL: 3,905
 Ini. Spud: 12/26/90
 Ini. Comp.: 01/28/91

1/91: Perf 4734-5144'. Acidize w/
 875g 15% HCL & 5925g 20% NEFE.
 IP 19 bopd, 159 bwpd.

8/93: Pmp 110 gals SCW-358H in 30
 bbls FW, flush w/ 150 FW w/ 5 gals
 DMW-2336D.

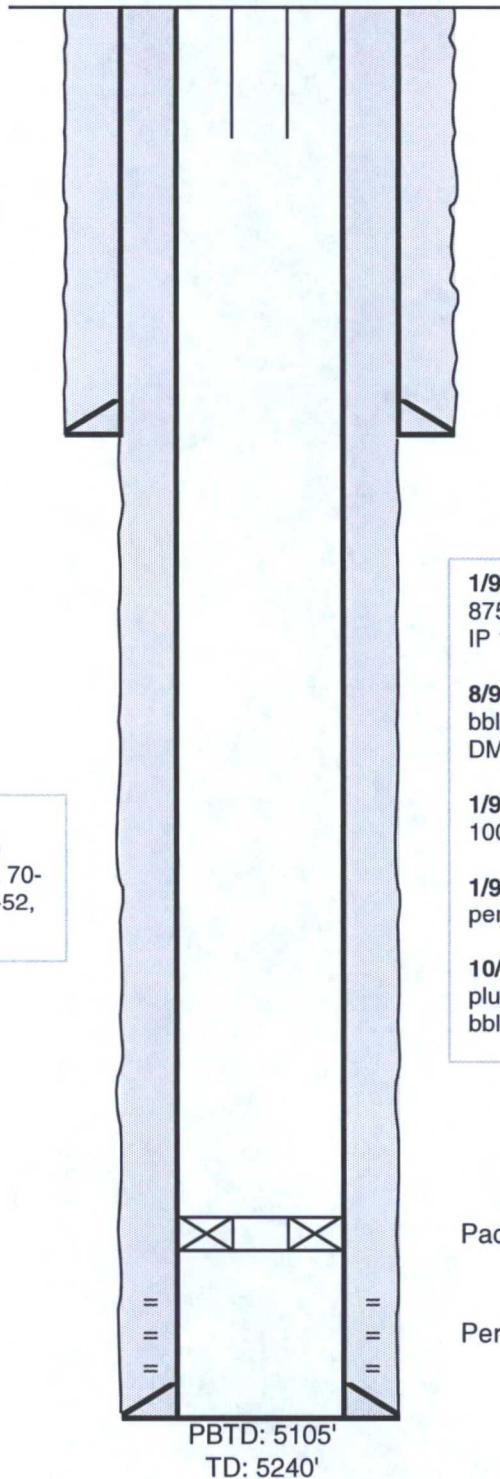
1/95: Fish parted 7/8" rods. Spotted
 1000 gals acid across perfs.

1/96: Spotted 1000 gals acid across
 perfs.

10/3/01: TA w/pkr @ 4446' w/profile
 plug set in pkr. Circ wellbore w/110
 bbls pkr fluid.

Packer at 4446' w/profile plug

Perfs: 4734-5144' San Andres



PBTD: 5105'
 TD: 5240'

PROPOSED WELLBORE DIAGRAM
WLU 69

Created: 07/25/16 By: MKHS
 Updated: 09/28/16 By: LRQS
 Lease: West Lovington Unit
 Field: West Lovington Upper San Andres
 Surf. Loc.: 1305' FNL 2575' FWL
 Bot. Loc.:
 County: Lea St.: NM
 Status: TA'd Producing Well

Well #: 69 St. Lse:
 API 30-025-30961
 Unit Ltr.: F Section: 7
 TSHR/Rng: 17S 36E
 Pool Code: OGRID: 4323
 Directions: Lovington, NM
 Chevno: OM1992

Surface Casing

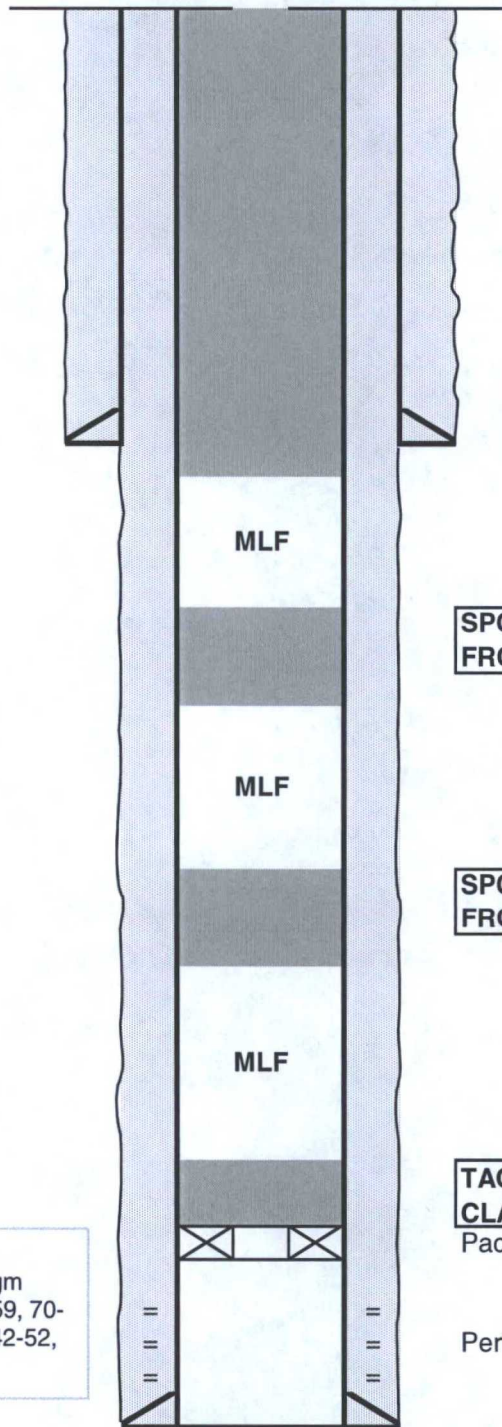
Size: 8 5/8"
 Wt., Grd.: 24#
 Depth: 368'
 Sxs Cmt: 275sx
 Circulate: Yes
 TOC: Surface
 Hole Size: 12-1/4"

Production Casing

Size: 5 1/2"
 Wt., Grd.: 15.5#
 Depth: 5240'
 Sxs Cmt: 785sx
 Circulate: Yes
 TOC: Surface
 Hole Size: 7 7/8"

Perf Details:

2 SPF, 180 Degree Phasing, 22.7 gm
 4734-42, 48-53, 4793-4803, 4956-59, 70-
 74, 77-80, 84-88, 5006-08, 16-21, 42-52,
 52-56, 5100-10, 12-18, 38-44



**SPOT 50SX OF CLASS "C"
CEMENT FROM 425' TO
SURFACE.**

**SPOT 25SX OF CLASS "C" CEMENT
FROM 2100' TO 1900'.**

**SPOT 45SX OF CLASS "C" CEMENT
FROM 3200' TO 2850'.**

**TAG PLUG AND SPOT 25SX OF
CLASS "C" CEMENT ON TOP.**

Packer at 4446' w/profile plug

Perfs: 4734-5144' San Andres

PBTD: 5105'
TD: 5240'