

DISTRICT I  
1625 N. French Dr., Hobbs, NM 88240  
Phone (575) 393-6181 Fax: (575) 393-0720

DISTRICT II  
811 S. First St., Artesia, NM 88210  
Phone (575) 748-1283 Fax: (575) 748-0720

DISTRICT III  
1000 Rio Brazos Rd., Aztec, NM 87410  
Phone (505) 334-6178 Fax: (505) 334-6170

DISTRICT IV  
1220 S. St. Francis Dr., Santa Fe, NM 87505  
Phone (505) 476-3400 Fax: (505) 476-3462

State of New Mexico  
Energy, Minerals and Natural Resources Department

HOBBS OCD

Form C-102

Revised August 1, 2011

Submit one copy to appropriate  
District Office

# OIL CONSERVATION DIVISION

1220 South St. Francis Dr.  
Santa Fe, New Mexico 87505

JUL 21 2015

RECEIVED

☐ AMENDED REPORT

## WELL LOCATION AND ACREAGE DEDICATION PLAT

API Number 30-025-42699	Pool Code 21650	Pool Name EK-BONE SPRING
Property Code 315045	Property Name EK 29 BS2 FEDERAL COM	Well Number 3H
OGRID No. 22044	Operator Name McELVAIN ENERGY, INC	Elevation 3943

### Surface Location

UL or lot No.	Section	Township	Range	Lot Idn	Feet from the	North/South line	Feet from the	East/West line	County
N	29	18 S	34 E		305	SOUTH	2155	WEST	LEA

### Bottom Hole Location If Different From Surface

UL or lot No.	Section	Township	Range	Lot Idn	Feet from the	North/South line	Feet from the	East/West line	County
C	29	18 S	34 E		510	NORTH	1980	WEST	LEA

Dedicated Acres	Joint or Infill	Consolidation Code	Order No.
160			

NO ALLOWABLE WILL BE ASSIGNED TO THIS COMPLETION UNTIL ALL INTERESTS HAVE BEEN CONSOLIDATED  
OR A NON-STANDARD UNIT HAS BEEN APPROVED BY THE DIVISION

N: 628640.1  
E: 768593.2  
(NAD83)

N: 628680.4  
E: 772232.9  
(NAD83)

N: 628675.6  
E: 774878.4  
(NAD83)

N: 623359.6  
E: 769645.7  
(NAD83)

N: 623394.4  
E: 774926.2  
(NAD83)

**BOTTOM HOLE LOCATION**  
Lat - N 32°43'28.47"  
Long - W 103°35'04.76"  
NMSPCE- N 628145.4  
E 771577.8  
(NAD-83)

**SURFACE LOCATION**  
Lat - N 32°42'44.27"  
Long - W 103°35'02.56"  
NMSPCE- N 623679.6  
E 771797.2  
(NAD-83)

**PROJECT AREA**

**PRODUCING AREA**

**POE**

**SL**

**OPERATOR CERTIFICATION**  
I hereby certify that the information contained herein is true and complete to the best of my knowledge and belief, and that this organization either owns a working interest or unleased mineral interest in the land including the proposed bottom hole location or has a right to drill this well at this location pursuant to a contract with an owner of such a mineral or working interest, or to a voluntary pooling agreement or a compulsory pooling order heretofore entered by the division.  
*Joe T. Janica*  
Signature Date  
Joe T. Janica 03/12/15  
Printed Name  
joejanica@valornet.com  
Email Address

**SURVEYOR CERTIFICATION**  
I hereby certify that the well location shown on this plat was plotted from field notes of actual surveys made by me or under my supervision and that the same is true and correct to the best of my belief.  
DECEMBER 10 2014  
Date Surveyed  
Signature of Professional Surveyor  
Certificate Number 7977  
BASIC SURVEYS

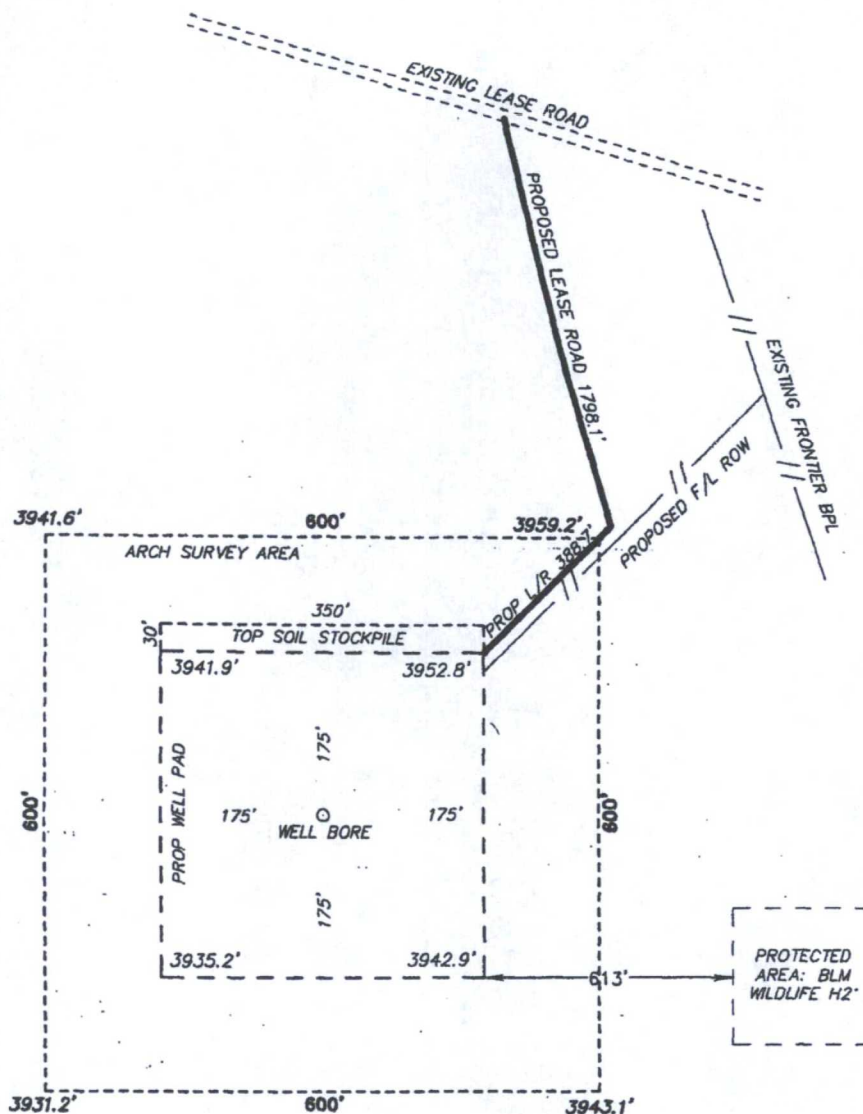
0' 500' 1000' 1500' 2000'  
SCALE: 1" = 1000'  
WO Num.: 31338

EXHIBIT "A"

JUL 22 2015



SECTION 29, TOWNSHIP 18 SOUTH, RANGE 34 EAST, N.M.P.M.,  
LEA COUNTY, NEW MEXICO.



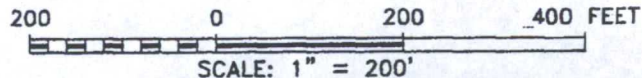
**McELVAIN ENERGY, INC**  
**EK 29 BS2 FEDERAL COM 3H**  
**ELEV. - 3943'**

Lat - N 32°42'44.27"  
Long - W 103°35'02.56"  
NAD83 - N 623679.6  
E 771797.2  
(NAD-83)

Directions to Location:

FROM JUNCTION OF US 529 AND GEMINI ROAD GO  
NORTHWEST ON US 529 1.6 MILES, TURN  
SOUTHWEST ON LEASE ROAD 1.7 MILES, SOUTHEAST  
ON LEASE ROAD 0.7 MILES, LEFT ON LEASE ROAD  
0.8 MILES, TURN SOUTH ON LEASE ROAD 0.4 MILES  
AND PROPOSED LEASE ROAD WILL BE ON RIGHT.

HOBBS, NM IS ±26 MILES TO THE EAST OF LOCATION.



**McELVAIN ENERGY, INC**

REF: EK 29 BS2 FEDERAL COM 3H / WELL PAD TOPO

THE EK 29 BS2 FEDERAL COM 3H LOCATED 305' FROM  
THE SOUTH LINE AND 2155' FROM THE WEST LINE OF  
SECTION 29, TOWNSHIP 18 SOUTH, RANGE 34 EAST.

N.M.P.M., LEA COUNTY, NEW MEXICO.

**basin**  
**surveys**  
focused on excellence  
in the oilfield

P.O. Box 1786 (575) 393-7316 - Office  
1120 N. West County Rd. (575) 392-2206 - Fax  
Hobbs, New Mexico 88241 basinsurveys.com