

OCT 03 2016

District Office

☐ AMENDED REPORT

**District I**  
1625 N. French Dr., Hobbs, NM 88240  
Phone: (575) 393-6161 Fax: (575) 393-0720

**District II**  
811 S. First St., Artesia, NM 88210  
Phone: (575) 748-1283 Fax: (575) 748-9720

**District III**  
1000 Rio Brazos Road, Aztec, NM 87410  
Phone: (505) 334-6178 Fax: (505) 334-6170

**District IV**  
1220 S. St. Francis Dr., Santa Fe, NM 87505  
Phone: (505) 476-3460 Fax: (505) 476-3462

State of New Mexico  
Energy, Minerals & Natural Resources Department  
OIL CONSERVATION DIVISION  
1220 South St. Francis Dr.  
Santa Fe, NM 87505

<sup>1</sup> API Number <b>30-025-43441</b>	<sup>2</sup> Pool Code <b>59900</b>	<sup>3</sup> Pool Name <b>Triple X; Bone Spring</b>
<sup>4</sup> Property Code <b>30884</b>	<sup>5</sup> Property Name <b>THISTLE UNIT</b>	<sup>6</sup> Well Number <b>113H</b>
<sup>7</sup> OGRID No. <b>6137</b>	<sup>8</sup> Operator Name <b>DEVON ENERGY PRODUCTION COMPANY, L.P.</b>	<sup>9</sup> Elevation <b>3642.7</b>

UL or lot no.	Section	Township	Range	Lot Idn	Feet from the	North/South line	Feet from the	East/West line	County
O	34	23 S	33 E		248	SOUTH	1942	EAST	LEA

UL or lot no.	Section	Township	Range	Lot Idn	Feet from the	North/South line	Feet from the	East/West line	County
I	27	23 S	33 E		2630	SOUTH	1270	EAST	LEA

<sup>12</sup> Dedicated Acres 240	<sup>13</sup> Joint or Infill	<sup>14</sup> Consolidation Code	<sup>15</sup> Order No.
--------------------------------------	-------------------------------	----------------------------------	-------------------------

No allowable will be assigned to this completion until all interests have been consolidated or a non-standard unit has been approved by the division.

I hereby certify that the information contained herein is true and complete to the best of my knowledge and belief, and that this organization either owns a working interest or undivided mineral interest in the land including the proposed bottom hole location or has a right to drill this well at this location pursuant to a contract with an owner of such a mineral or working interest, or to a voluntary pooling agreement or a compulsory pooling order heretofore entered by the division.

Debraun Deal 9/29/2016  
Signature Date

Rebecca Deal, Regulatory Analyst

Printed Name \_\_\_\_\_

rebecca.deal@dvn.com

E-mail Address

I hereby certify that the well location shown on this plat was plotted from field notes of actual surveys made by me or under my supervision, and that the same is true and correct to the best of my belief.

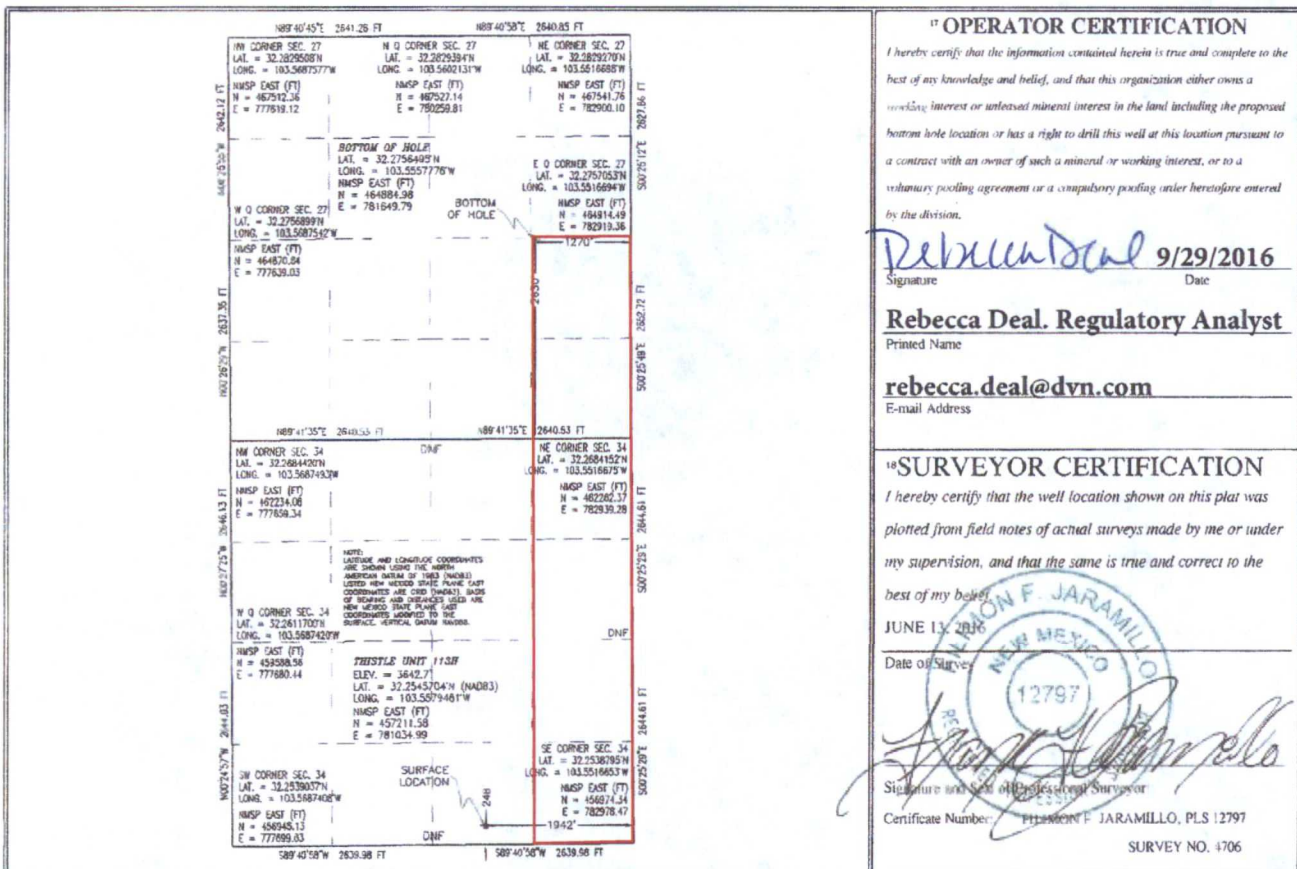
JUNE 13 2016

Date of Survey: \_\_\_\_\_

Signature and Seal of Professional Surveyor

Certificate Number: FREDERICK JARAMILLO, PLS 12797

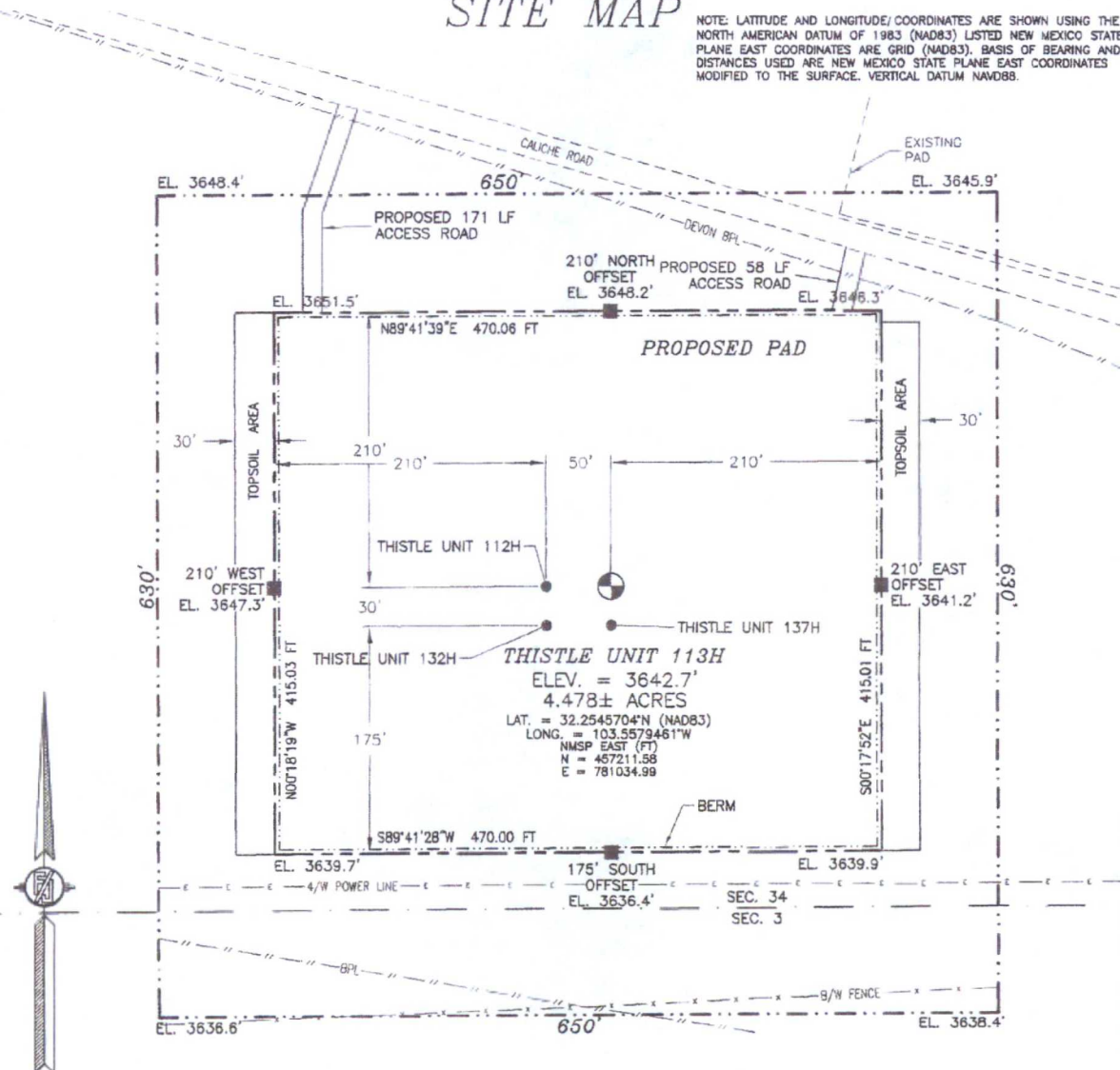
SURVEY NO. 4706



SECTION 34, TOWNSHIP 23 SOUTH, RANGE 33 EAST, N.M.P.M.  
LEA COUNTY, STATE OF NEW MEXICO

SITE MAP

NOTE: LATITUDE AND LONGITUDE/COORDINATES ARE SHOWN USING THE NORTH AMERICAN DATUM OF 1983 (NAD83) LISTED NEW MEXICO STATE PLANE EAST COORDINATES ARE GRID (NAD83). BASIS OF BEARING AND DISTANCES USED ARE NEW MEXICO STATE PLANE EAST COORDINATES MODIFIED TO THE SURFACE. VERTICAL DATUM NAVD88.



012 60 120 240

SCALE 1" = 120'  
DIRECTIONS TO LOCATION

FROM STATE HIGHWAY 128 AND CR J2 (BRINNSTOOL) GO NORTH ON CR J2 3.1 MILES, TURN RIGHT ON CALICHE ROAD AND GO EAST 0.44 OF A MILE, BEND LEFT AND GO NORTH 0.1 OF A MILE, BEND RIGHT AND GO SOUTHEAST 0.31 OF A MILE TO A PROPOSED ROAD SURVEY AND FOLLOW FLAGS SOUTH 58' TO THE NORTHEAST PAD CORNER FOR THIS LOCATION.

DEVON ENERGY PRODUCTION COMPANY, L.P.

THISTLE UNIT 113H

LOCATED 248 FT. FROM THE SOUTH LINE  
AND 1942 FT. FROM THE EAST LINE OF

SECTION 34, TOWNSHIP 23 SOUTH,

RANGE 33 EAST, N.M.P.M.

LEA COUNTY, STATE OF NEW MEXICO

JUNE 13, 2016

SURVEY NO. 4706

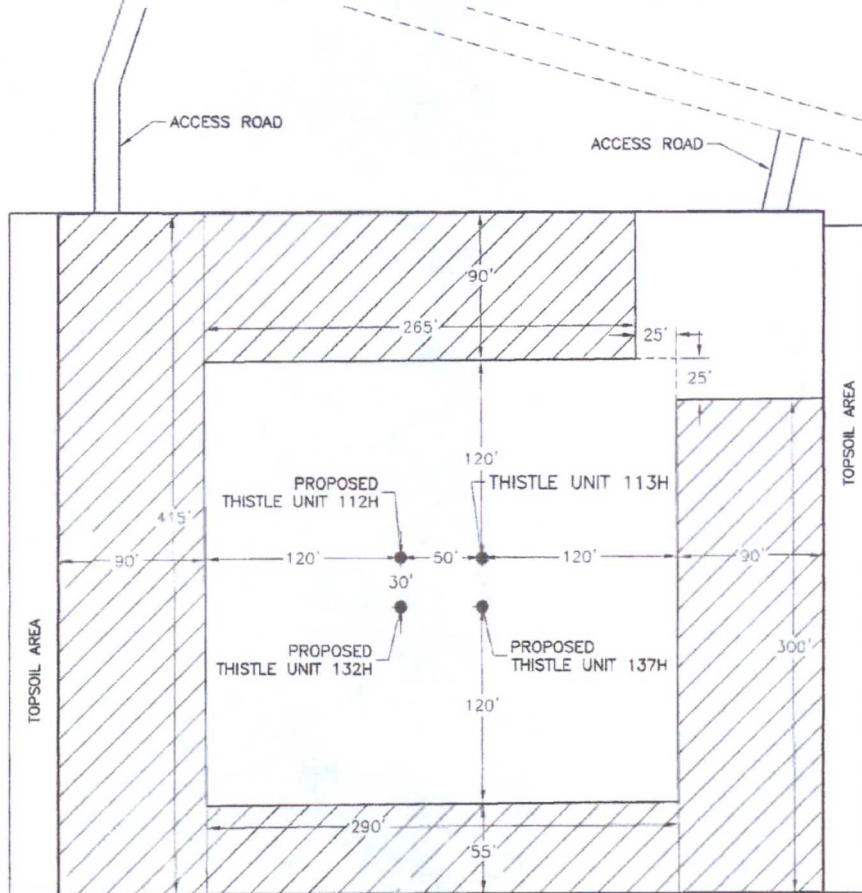
MADRON SURVEYING, INC.


301 SOUTH CANAL  
(575) 234-3341

CARLSBAD, NEW MEXICO

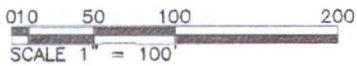


SECTION 34, TOWNSHIP 23 SOUTH, RANGE 33 EAST, N.M.P.M.  
LEA COUNTY, STATE OF NEW MEXICO



 DENOTES  
RECLAMATION AREA

2.392± ACRES RECLAMATION AREA



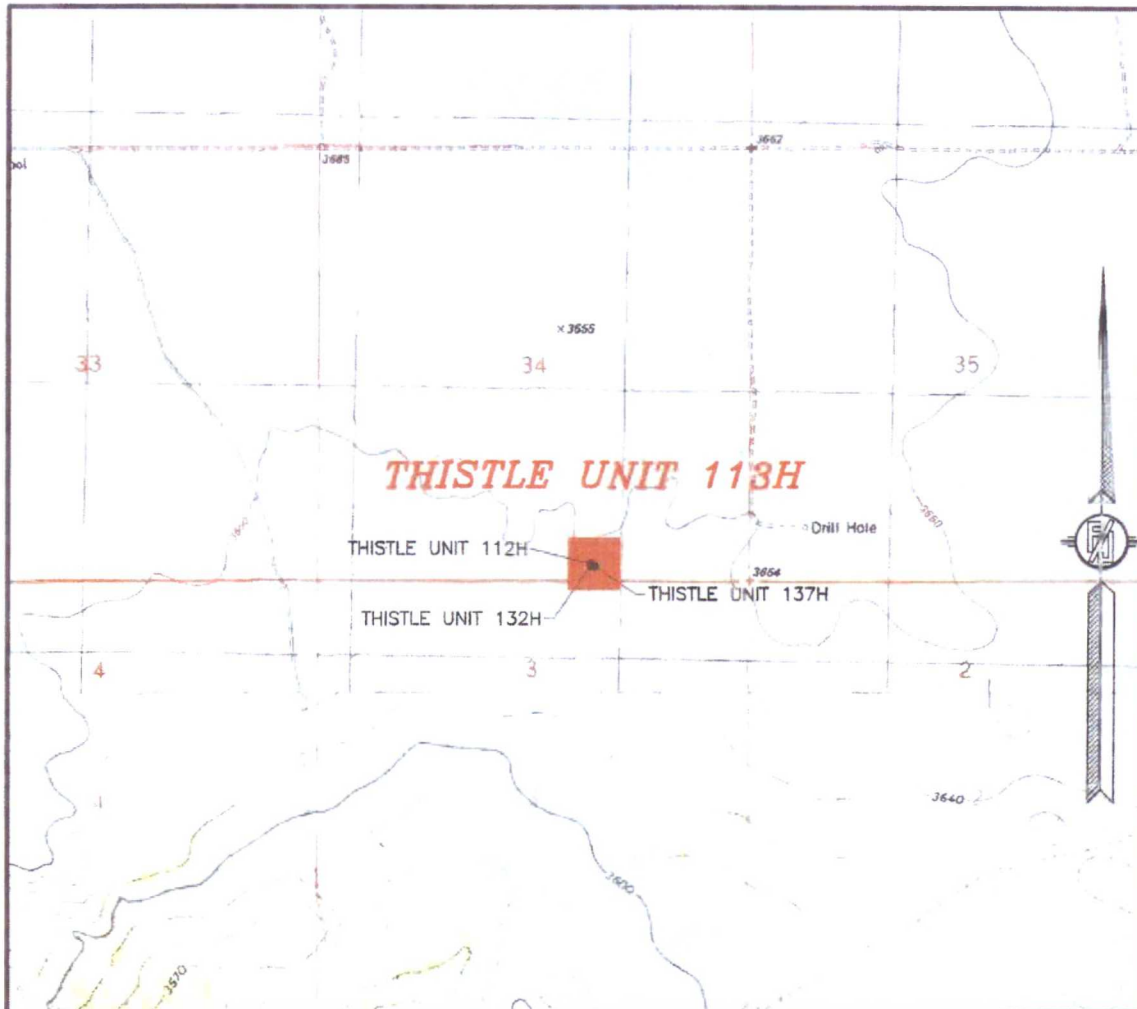
DEVON ENERGY PRODUCTION COMPANY, L.P.  
THISTLE UNIT 113H  
LOCATED 248 FT. FROM THE SOUTH LINE  
AND 1942 FT. FROM THE EAST LINE OF  
SECTION 34, TOWNSHIP 23 SOUTH,  
RANGE 33 EAST, N.M.P.M.  
LEA COUNTY, STATE OF NEW MEXICO

JUNE 13, 2016

SURVEY NO. 4706

MADRON SURVEYING, INC. 301 SOUTH CANAL (575) 234-3341 CARLSBAD, NEW MEXICO

SECTION 34, TOWNSHIP 23 SOUTH, RANGE 33 EAST, N.M.P.M.  
LEA COUNTY, STATE OF NEW MEXICO  
LOCATION VERIFICATION MAP



USGS QUAD MAP:  
TIP TOP WELLS

NOT TO SCALE

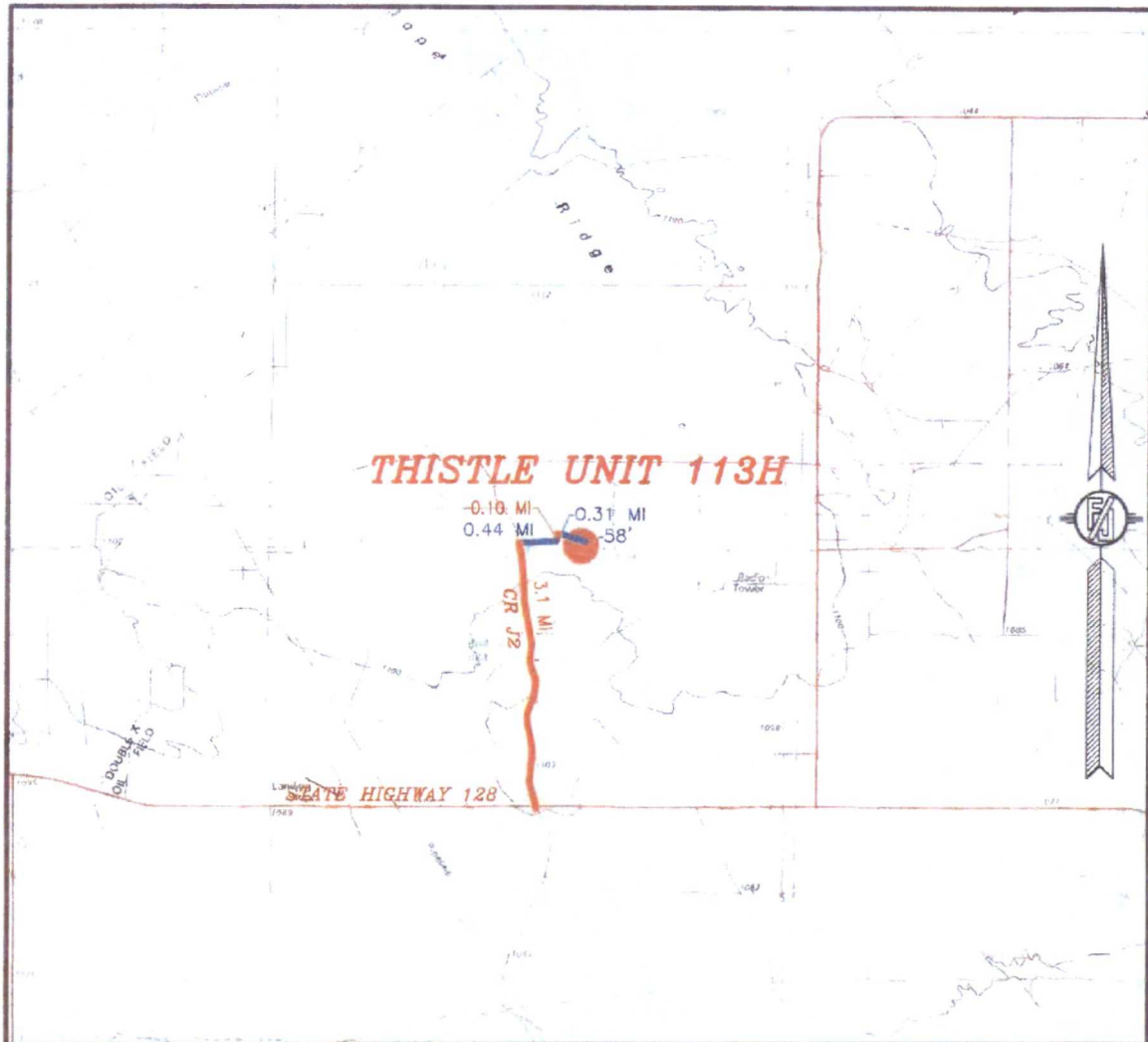
DEVON ENERGY PRODUCTION COMPANY, L.P.  
**THISTLE UNIT 113H**  
LOCATED 248 FT. FROM THE SOUTH LINE  
AND 1942 FT. FROM THE EAST LINE OF  
SECTION 34, TOWNSHIP 23 SOUTH,  
RANGE 33 EAST, N.M.P.M.  
LEA COUNTY, STATE OF NEW MEXICO

JUNE 13, 2016

MADRON SURVEYING, INC. 301 SOUTH CANAL (575) 234-3341 CARLSBAD, NEW MEXICO

SURVEY NO. 4706

SECTION 34, TOWNSHIP 23 SOUTH, RANGE 33 EAST, N.M.P.M.  
LEA COUNTY, STATE OF NEW MEXICO  
VICINITY MAP



DISTANCES IN MILES

NOT TO SCALE

DEVON ENERGY PRODUCTION COMPANY, L.P.

**THISTLE UNIT 113H**

LOCATED 248 FT. FROM THE SOUTH LINE  
AND 1942 FT. FROM THE EAST LINE OF  
SECTION 34, TOWNSHIP 23 SOUTH,  
RANGE 33 EAST, N.M.P.M.  
LEA COUNTY, STATE OF NEW MEXICO

**DIRECTIONS TO LOCATION**

FROM STATE HIGHWAY 128 AND CR J2 (BRININSTOOL) GO NORTH ON  
CR J2 3.1 MILES, TURN RIGHT ON CALICHE ROAD AND GO EAST 0.44  
OF A MILE, BEND LEFT AND GO NORTH 0.1 OF A MILE, BEND RIGHT  
AND GO SOUTHEAST 0.31 OF A MILE TO A PROPOSED ROAD SURVEY  
AND FOLLOW FLAGS SOUTH 58' TO THE NORTHEAST PAD CORNER FOR  
THIS LOCATION.

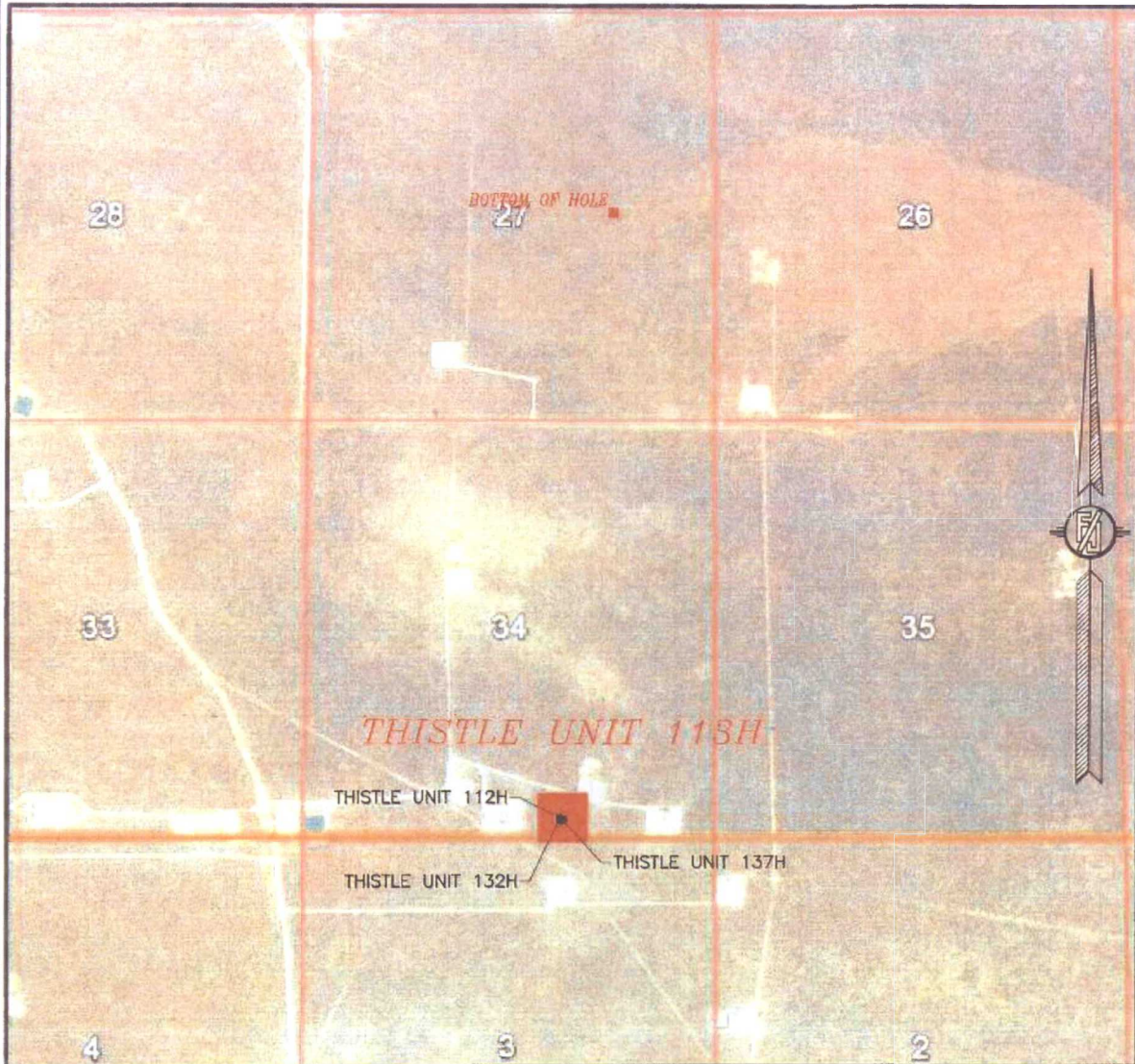
JUNE 13, 2016

SURVEY NO. 4706

MADRON SURVEYING, INC. 301 SOUTH CANAL (575) 234-3341 CARLSBAD, NEW MEXICO



SECTION 34, TOWNSHIP 23 SOUTH, RANGE 33 EAST, N.M.P.M.  
LEA COUNTY, STATE OF NEW MEXICO  
AERIAL PHOTO



NOT TO SCALE  
AERIAL PHOTO:  
GOOGLE EARTH  
FEBRUARY 2014

DEVON ENERGY PRODUCTION COMPANY, L.P.

**THISTLE UNIT 113H**

LOCATED 248 FT. FROM THE SOUTH LINE  
AND 1942 FT. FROM THE EAST LINE OF  
SECTION 34, TOWNSHIP 23 SOUTH,  
RANGE 33 EAST, N.M.P.M.  
LEA COUNTY, STATE OF NEW MEXICO

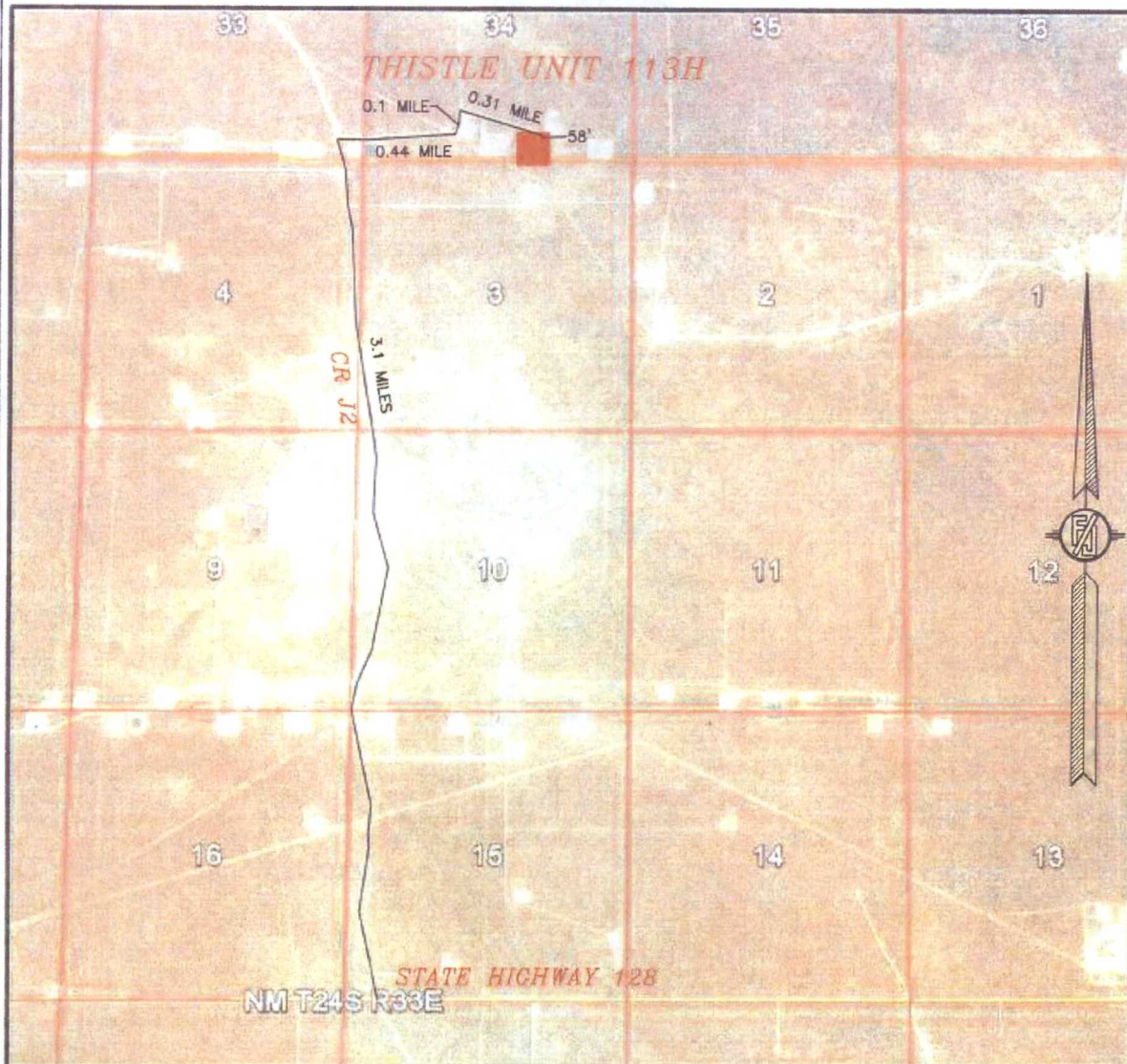
JUNE 13, 2016

SURVEY NO. 4706

MADRON SURVEYING, INC. 301 SOUTH CANAL (575) 234-3341 CARLSBAD, NEW MEXICO



SECTION 34, TOWNSHIP 23 SOUTH, RANGE 33 EAST, N.M.P.M.  
LEA COUNTY, STATE OF NEW MEXICO  
ACCESS AERIAL ROUTE MAP



NOT TO SCALE  
AERIAL PHOTO:  
GOOGLE EARTH  
FEBRUARY 2014

DEVON ENERGY PRODUCTION COMPANY, L.P.  
**THISTLE UNIT 113H**

LOCATED 248 FT. FROM THE SOUTH LINE  
AND 1942 FT. FROM THE EAST LINE OF  
SECTION 34, TOWNSHIP 23 SOUTH,  
RANGE 33 EAST, N.M.P.M.  
LEA COUNTY, STATE OF NEW MEXICO

JUNE 13, 2016

SURVEY NO. 4706

MADRON SURVEYING, INC. 301 SOUTH CANAL (575) 234-3341 CARLSBAD, NEW MEXICO