

District I  
1625 N. French Dr., Hobbs, NM 88240  
Phone: (575) 393-6161 Fax: (575) 393-0720  
District II  
811 S. First St., Artesia, NM 88210  
Phone: (575) 748-1283 Fax: (575) 748-9720  
District III  
1000 Rio Brazos Road, Aztec, NM 87410  
Phone: (505) 334-6178 Fax: (505) 334-6170  
District IV  
1220 S. St. Francis Dr., Santa Fe, NM 87505  
Phone: (505) 476-3460 Fax: (505) 476-3462

State of New Mexico  
Energy, Minerals & Natural Resources Department  
**HOBBS OIL CONSERVATION DIVISION**  
1220 South St. Francis Dr.  
Santa Fe, NM 87505

Form C-102  
Revised August 1, 2011  
Submit one copy to appropriate  
District Office

☐ AMENDED REPORT

OCT 17 2016

RECEIVED

WELL LOCATION AND ACREAGE DEDICATION PLAT

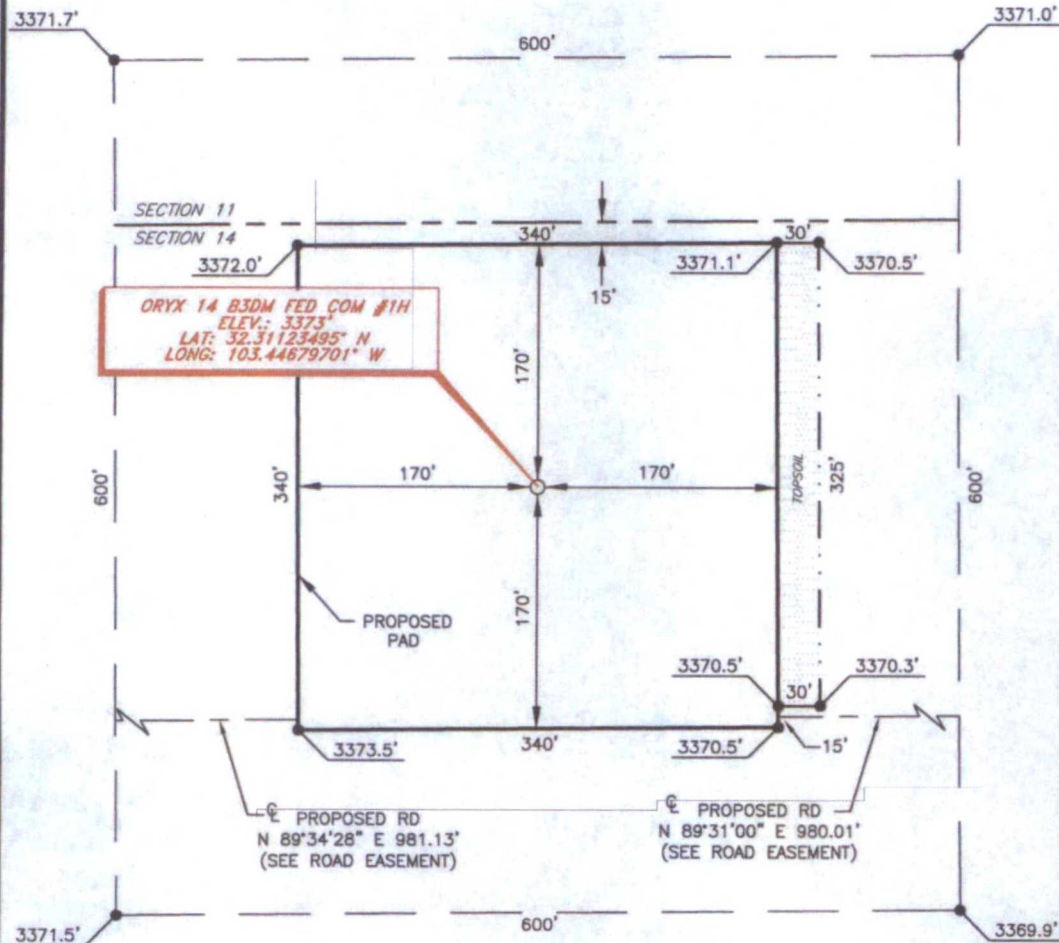
1 API Number <b>30-025-43424</b>		2 Pool Code <b>395642209</b>		3 Pool Name <b>ANTELOPE RIDGE WEST BONE SPRING</b>	
4 Property Code		5 Property Name <b>ORYX 14 B3DM FED COM</b>		6 Well Number <b>1H</b>	
7 OGRID NO. <b>14744</b>		8 Operator Name <b>MEWBOURNE OIL COMPANY</b>		9 Elevation <b>3373'</b>	
10 Surface Location					
UL or lot no. <b>D</b>	Section <b>14</b>	Township <b>23S</b>	Range <b>34E</b>	Lot Idn	Feet from the <b>185</b>
		North/South line <b>NORTH</b>		Feet From the <b>660</b>	East/West line <b>WEST</b>
		County <b>LEA</b>			
11 Bottom Hole Location If Different From Surface					
UL or lot no. <b>M</b>	Section <b>14</b>	Township <b>23S</b>	Range <b>34E</b>	Lot Idn	Feet from the <b>330</b>
		North/South line <b>SOUTH</b>		Feet from the <b>660</b>	East/West line <b>WEST</b>
		County <b>LEA</b>			
12 Dedicated Acres <b>160</b>	13 Joint or Infill	14 Consolidation Code	15 Order No.		

No allowable will be assigned to this completion until all interest have been consolidated or a non-standard unit has been approved by the division.

		<p>17 OPERATOR CERTIFICATION</p> <p>I hereby certify that the information contained herein is true and complete to the best of my knowledge and belief, and that this organization either owns a working interest or unleased mineral interest in the land including the proposed bottom hole location or has a right to drill this well at this location pursuant to a contract with an owner of such a mineral or working interest, or to a voluntary pooling agreement or a compulsory pooling order heretofore entered by the division.</p> <p>Signature: <b>BRADLEY BISHOP</b> Date: <b>9-29-15</b></p> <p>Printed Name: <b>BRADLEY BISHOP</b></p> <p>E-mail Address:</p>
<p>18 SURVEYOR CERTIFICATION</p> <p>I hereby certify that the well location shown on this plat was plotted from field notes of actual surveys made by me or under my supervision, and that the same is true and correct to the best of my belief.</p> <p><b>6-26-2015</b></p> <p>Date of Survey</p> <p>Signature and Seal of Professional Surveyor: <b>ROBERT M. HOWETT</b></p> <p><b>19680</b></p> <p>Certificate Number</p>		<p>GEODETIC DATA</p> <p>NAD 27 GRID - NM EAST</p> <p>SURFACE LOCATION</p> <p>N 478076.6 - E 773893.9</p> <p>LAT: 32.31123495° N</p> <p>LONG: 103.44679701° W</p> <p>BOTTOM HOLE</p> <p>N 473313.3 - E 773936.4</p> <p>CORNER DATA</p> <p>NAD 27 GRID - NM EAST</p> <p>A: FOUND BRASS CAP "1918"</p> <p>N 472977.8 - E 773279.4</p> <p>B: FOUND BRASS CAP "1918"</p> <p>N 475616.8 - E 773256.3</p> <p>C: FOUND BRASS CAP "1918"</p> <p>N 478256.0 - E 773232.4</p> <p>D: FOUND BRASS CAP "1918"</p> <p>N 478278.2 - E 775873.9</p> <p>E: FOUND BRASS CAP "1918"</p> <p>N 478301.1 - E 778516.5</p> <p>F: FOUND BRASS CAP "1918"</p> <p>N 475661.1 - E 778543.0</p> <p>G: FOUND BRASS CAP "1918"</p> <p>N 473021.5 - E 778565.5</p> <p>H: FOUND BRASS CAP "1918"</p> <p>N 473000.1 - E 775922.9</p>



MEWBOURNE OIL COMPANY  
 ORYX 14 B3DM FED COM #1H  
 (185' FNL & 660' FWL)  
 SECTION 14, T23S, R34E  
 N. M. P. M., LEA CO., NEW MEXICO



DIRECTIONS TO LOCATION

From the intersection of CR- 21 (Delaware Basin Road) and Adobe Road (E-21);  
 Go South on Adobe Road approx. 1.1 miles to a lease road on the left;  
 Turn left and go East approx. 0.2 miles to the proposed Pronghorn 15 B3AP Fed  
 Com #1H pad;  
 Turn right and go Southeast approx. 470 feet to the Southeast pad corner and  
 beginning of proposed road;  
 Turn left and go East following proposed road approx. 0.2 miles:  
 Location is on the left.

SCALE: 1" = 100'  
 0 50 100  
 BEARINGS ARE  
 NAD 27 GRID - NM EAST  
 DISTANCES ARE  
 GROUND.

Firm No.: TX 10193838 NM 4655451

Copyright 2015 - All Rights Reserved

NO.	REVISION	DATE
JOB NO.:	LS1506291	
DWG. NO.:	1506291PAD	

**RRC**

308 W. BROADWAY ST., HOBBS, NM 88240 (575) 964-8200

SCALE: 1" = 100'
DATE: 6-26-15
SURVEYED BY: ML/AA
DRAWN BY: JC
APPROVED BY: RMH
SHEET : 1 OF 1