

**HOBBS OCD****OCT 19 2016**

Form C-102

Revised August 1, 2011

Submit one copy to appropriate

District Office

☐ AMENDED REPORT

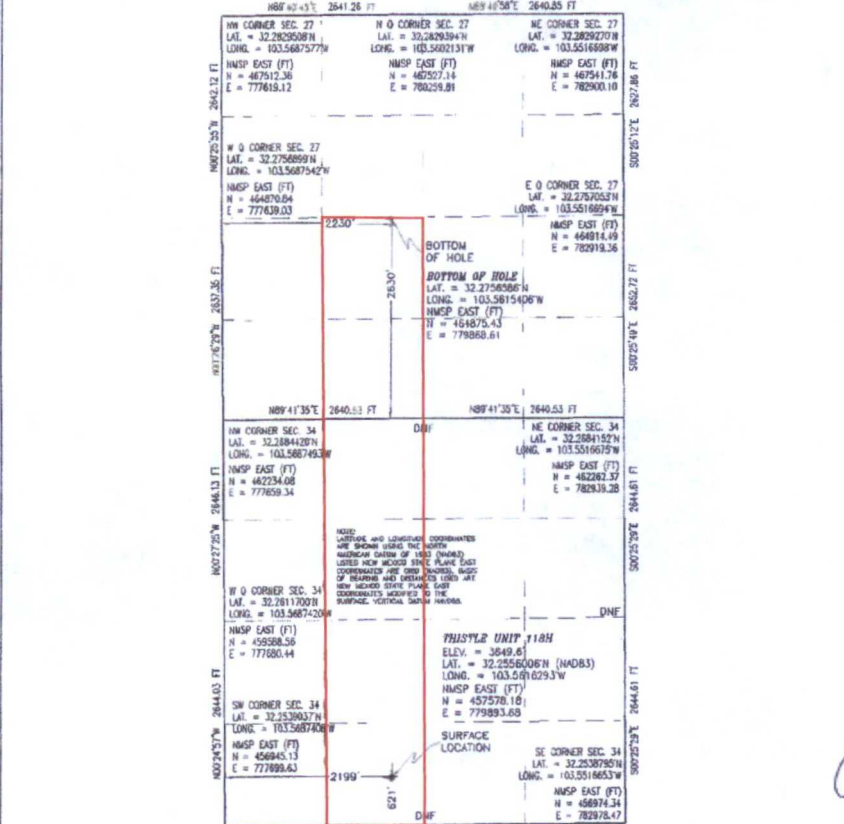
District I  
1625 N. French Dr., Hobbs, NM 88240  
Phone: (575) 393-6161 Fax: (575) 393-0720  
District II  
811 S. First St., Artesia, NM 88210  
Phone: (575) 748-1283 Fax: (575) 748-0720  
District III  
1000 Rio Brazos Road, Aztec, NM 87410  
Phone: (505) 334-6178 Fax: (505) 334-6170  
District IV  
1220 S. St. Francis Dr., Santa Fe, NM 87505  
Phone: (505) 476-3460 Fax: (505) 476-3462

State of New Mexico  
Energy, Minerals & Natural Resources Department  
**OIL CONSERVATION DIVISION**  
1220 South St. Francis Dr.  
Santa Fe, NM 87505

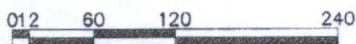
**WELL LOCATION AND ACREAGE DEDICATION PLAT**

<sup>1</sup> API Number <b>30-025-43451</b>		<sup>2</sup> Pool Code <b>59900</b>		<sup>3</sup> Pool Name <b>Triple X; Bone Spring</b>				
<sup>4</sup> Property Code <b>30884</b>		<sup>5</sup> Property Name <b>THISTLE UNIT</b>			<sup>6</sup> Well Number <b>118H</b>			
<sup>7</sup> OGRID No. <b>6137</b>		<sup>8</sup> Operator Name <b>DEVON ENERGY PRODUCTION COMPANY, L.P.</b>			<sup>9</sup> Elevation <b>3649.6</b>			
<sup>10</sup> Surface Location								
UL or lot no. <b>N</b>	Section <b>34</b>	Township <b>23 S</b>	Range <b>33 E</b>	Lot Idn <b>621</b>	Feet from the <b>SOUTH</b>	North/South line <b>2199</b>	East/West line <b>WEST</b>	County <b>LEA</b>
<sup>11</sup> Bottom Hole Location If Different From Surface								
UL or lot no. <b>K</b>	Section <b>27</b>	Township <b>23 S</b>	Range <b>33 E</b>	Lot Idn <b>2630</b>	Feet from the <b>SOUTH</b>	North/South line <b>2230</b>	East/West line <b>WEST</b>	County <b>LEA</b>
<sup>12</sup> Dedicated Acres <b>240</b>		<sup>13</sup> Joint or Infill		<sup>14</sup> Consolidation Code		<sup>15</sup> Order No.		

No allowable will be assigned to this completion until all interests have been consolidated or a non-standard unit has been approved by the division.

		<p><b><sup>17</sup> OPERATOR CERTIFICATION</b></p> <p>I hereby certify that the information contained herein is true and complete to the best of my knowledge and belief, and that this organization either owns a working interest or unleased mineral interest in the land including the proposed bottom hole location or has a right to drill this well at this location pursuant to a contract with an owner of such a mineral or working interest, or to a voluntary pooling agreement or a compulsory pooling order heretofore entered by the division.</p> <p><i>Rebecca Deal</i> 9/29/2016 Signature Date</p> <p><b>Rebecca Deal, Regulatory Analyst</b> Printed Name</p> <p><b>rebecca.deal@dvn.com</b> E-mail Address</p> <p><b><sup>18</sup> SURVEYOR CERTIFICATION</b></p> <p>I hereby certify that the well location shown on this plat was plotted from field notes of actual surveys made by me or under my supervision, and that the same is true and correct to the best of my belief.</p> <p>JUNE 14, 2016 Date of Survey</p> <p><i>William F. Jaramila</i> Signature and Seal of Professional Surveyor</p> <p>Certificate Number: <b>WILLIAM F. JARAMILA, PLS 12797</b> PROFESSIONAL SURVEYOR NO. 4704</p>
--	--	---

## SITE MAP

[illegible]

**DIRECTIONS TO LOCATION**  
FROM STATE HIGHWAY 128 AND CR J2 (BRINNSTOOL) GO NORTH ON CR J2 3.1 MILES, TURN RIGHT ON CALICHE ROAD AND GO EAST 0.44 OF A MILE, BEND LEFT AND GO NORTH 0.1 OF A MILE, BEND RIGHT AND GO SOUTHEAST 517' TO A PROPOSED ROAD SURVEY AND FOLLOW FLAGS SOUTH 71' TO THE NORTHEAST PAD CORNER FOR THIS LOCATION.

LOCATED 621 FT. FROM THE SOUTH LINE  
AND 2199 FT. FROM THE WEST LINE OF  
SECTION 34, TOWNSHIP 23 SOUTH,  
RANGE 33 EAST, N.M.P.M.  
LEA COUNTY, STATE OF NEW MEXICO

SURVEY NO. 4704

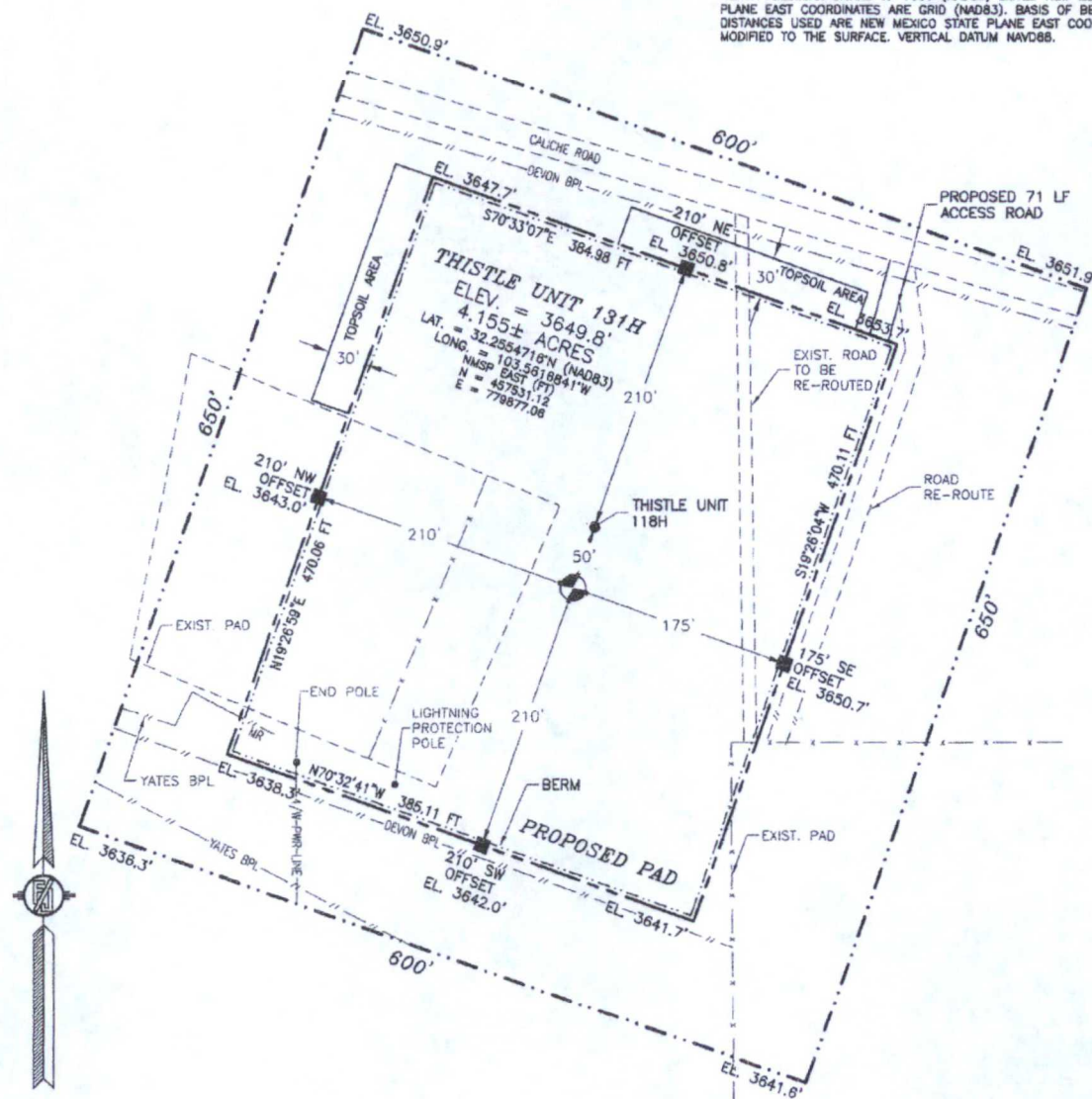
MADRON SURVEYING, INC. 301 SOUTH CANAL CARLSBAD, NEW MEXICO  
(575) 234-3341

301 SOUTH CANAL  
(575) 234-3341



# SITE MAP

NOTE: LATITUDE AND LONGITUDE COORDINATES ARE SHOWN USING THE NORTH AMERICAN DATUM OF 1983 (NAD83) LISTED NEW MEXICO STATE PLANE EAST COORDINATES ARE GRID (NAD83). BASIS OF BEARING AND DISTANCES USED ARE NEW MEXICO STATE PLANE EAST COORDINATES MODIFIED TO THE SURFACE. VERTICAL DATUM NAVD88.



SCALE 1" = 120'

DIRECTIONS TO LOCATION

FROM STATE HIGHWAY 128 AND CR J2 (BRINNSTOOL) GO NORTH ON CR J2 3.1 MILES, TURN RIGHT ON CALICHE ROAD AND GO EAST 0.44 OF A MILE, BEND LEFT AND GO NORTH 0.1 OF A MILE, BEND RIGHT AND GO SOUTHEAST 517' TO A PROPOSED ROAD SURVEY AND FOLLOW FLAGS SOUTH 71' TO THE NORTHEAST PAD CORNER FOR THIS LOCATION.

LOCATED 574 FT. FROM THE SOUTH LINE  
AND 2182 FT. FROM THE WEST LINE OF  
SECTION 34, TOWNSHIP 23 SOUTH,  
RANGE 33 EAST, N.M.P.M.

LEA COUNTY, STATE OF NEW MEXICO

JUNE 14, 2016

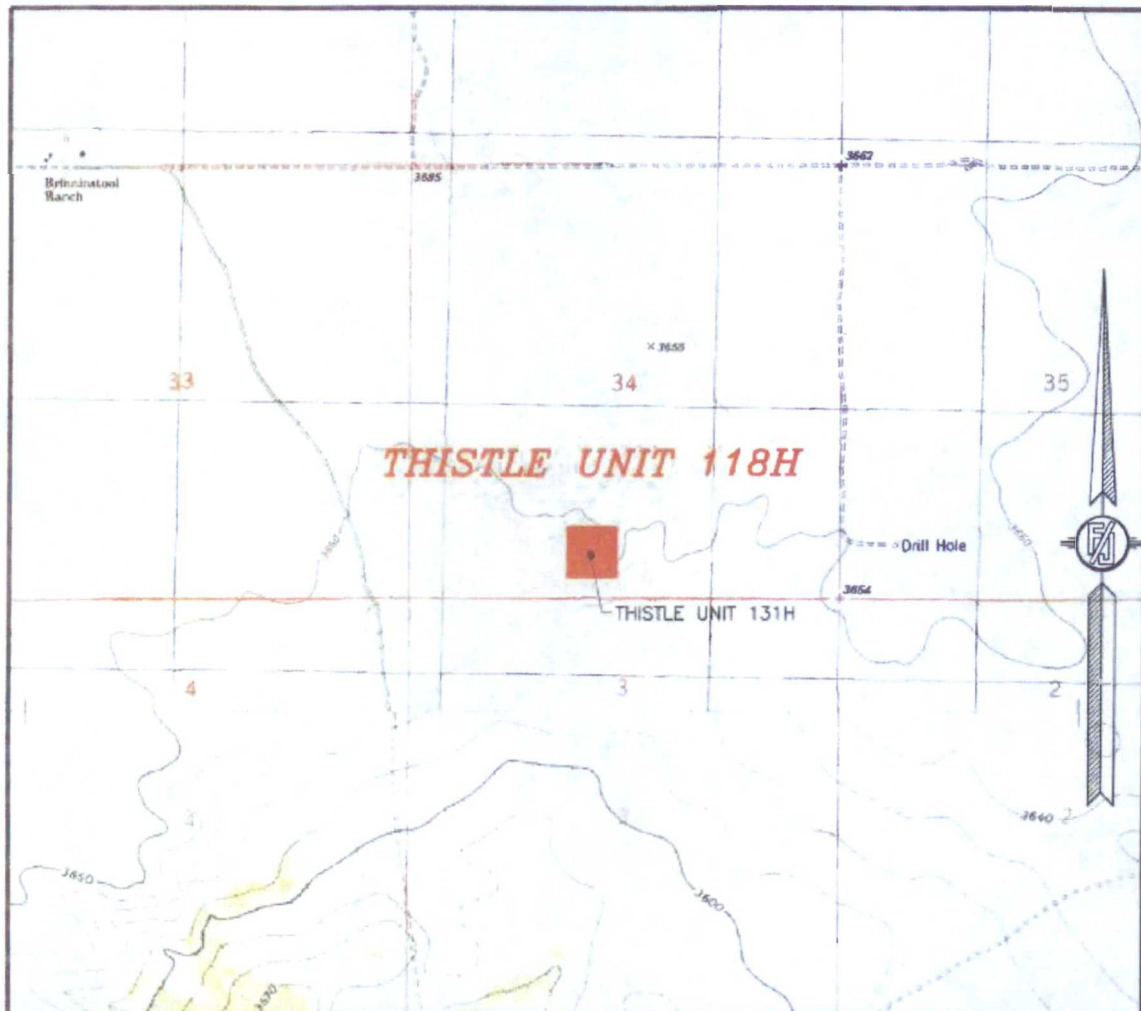
SURVEY NO. 4710

MADRON SURVEYING, INC.

301 SOUTH CANAL  
(575) 234-3341

CARLSBAD, NEW MEXICO

SECTION 34, TOWNSHIP 23 SOUTH, RANGE 33 EAST, N.M.P.M.  
LEA COUNTY, STATE OF NEW MEXICO  
LOCATION VERIFICATION MAP



USGS QUAD MAP:  
TIP TOP WELLS

NOT TO SCALE

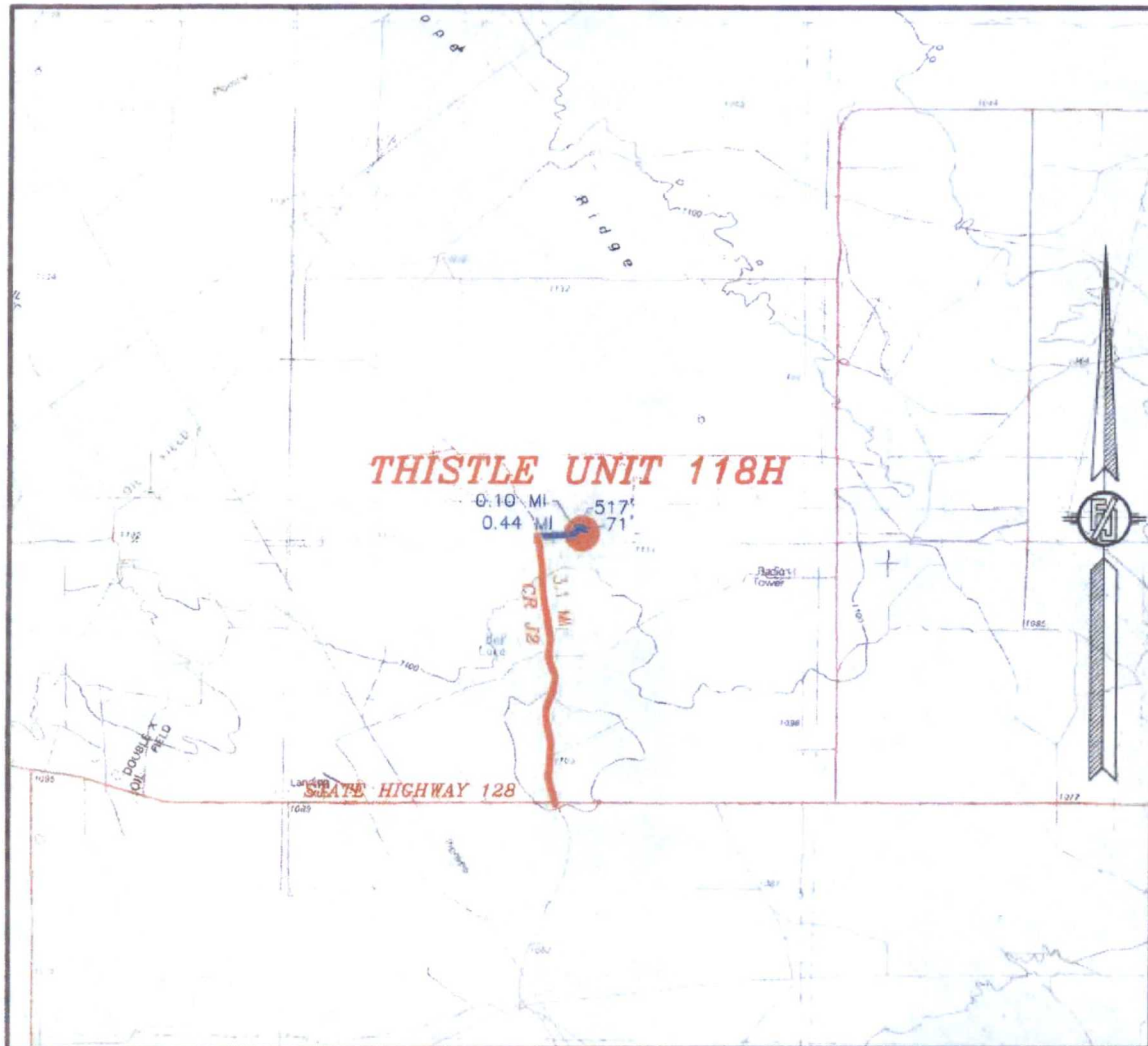
DEVON ENERGY PRODUCTION COMPANY, L.P.  
**THISTLE UNIT 118H**  
LOCATED 621 FT. FROM THE SOUTH LINE  
AND 2199 FT. FROM THE WEST LINE OF  
SECTION 34, TOWNSHIP 23 SOUTH,  
RANGE 33 EAST, N.M.P.M.  
LEA COUNTY, STATE OF NEW MEXICO

JUNE 14, 2016

MADRON SURVEYING, INC. 301 SOUTH CANAL (575) 234-3341 CARLSBAD, NEW MEXICO SURVEY NO. 4704



SECTION 34, TOWNSHIP 23 SOUTH, RANGE 33 EAST, N.M.P.M.  
LEA COUNTY, STATE OF NEW MEXICO  
VICINITY MAP



DISTANCES IN MILES

NOT TO SCALE

DEVON ENERGY PRODUCTION COMPANY, L.P.

**THISTLE UNIT 118H**

LOCATED 621 FT. FROM THE SOUTH LINE  
AND 2199 FT. FROM THE WEST LINE OF

SECTION 34, TOWNSHIP 23 SOUTH,

RANGE 33 EAST, N.M.P.M.

LEA COUNTY, STATE OF NEW MEXICO

JUNE 14, 2016

**DIRECTIONS TO LOCATION**

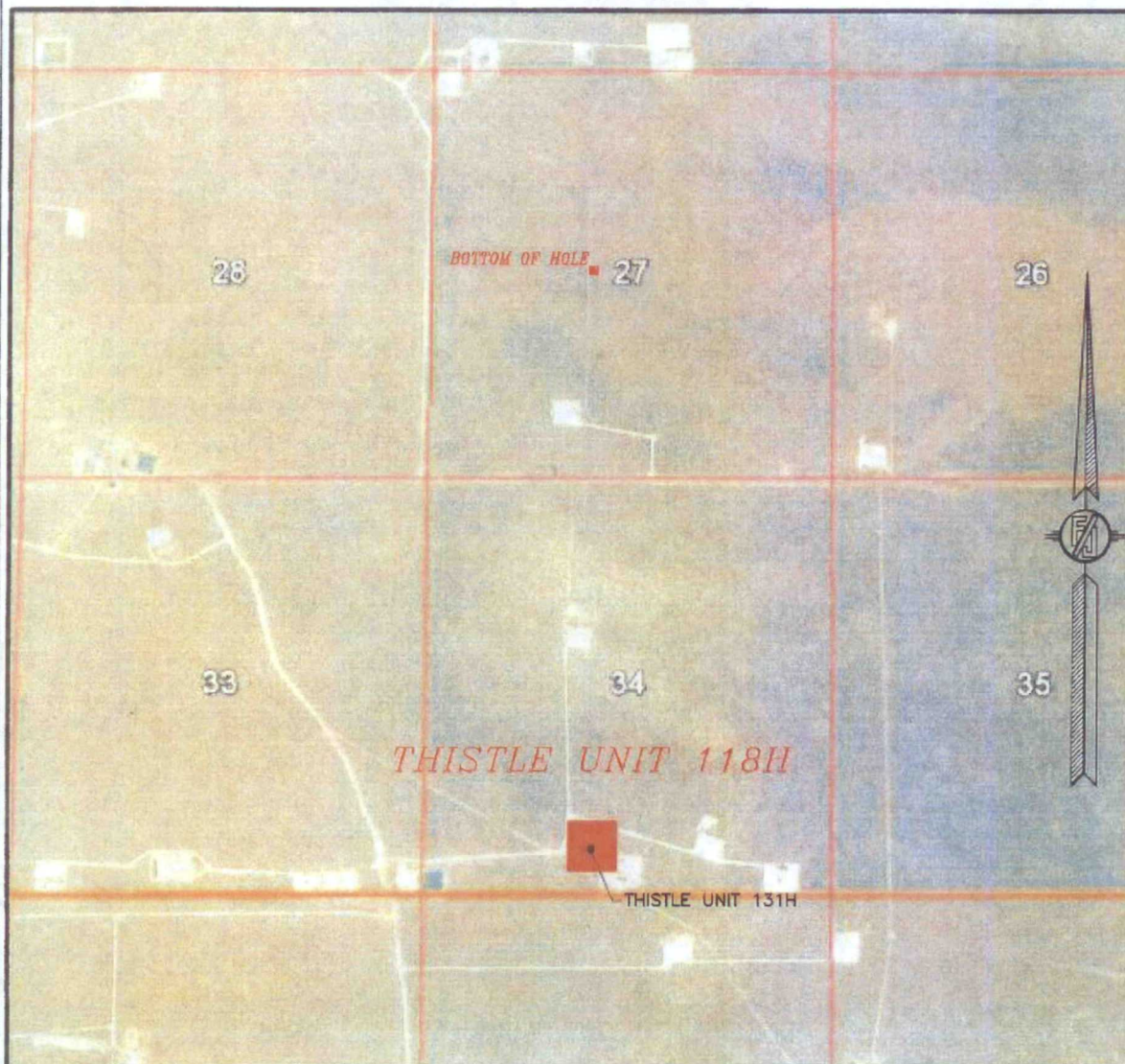
FROM STATE HIGHWAY 128 AND CR J2 (BRININSTOOL) GO NORTH ON CR J2 3.1 MILES, TURN RIGHT ON CALICHE ROAD AND GO EAST 0.44 OF A MILE, BEND LEFT AND GO NORTH 0.1 OF A MILE, BEND RIGHT AND GO SOUTHEAST 517' TO A PROPOSED ROAD SURVEY AND FOLLOW FLAGS SOUTH 71' TO THE NORTHEAST PAD CORNER FOR THIS LOCATION.

SURVEY NO. 4704

MADRON SURVEYING, INC. 301 SOUTH CANAL (575) 234-3341 CARLSBAD, NEW MEXICO

SECTION 34, TOWNSHIP 23 SOUTH, RANGE 33 EAST, N.M.P.M.  
LEA COUNTY, STATE OF NEW MEXICO

*AERIAL PHOTO*



NOT TO SCALE  
AERIAL PHOTO:  
GOOGLE EARTH  
FEBRUARY 2016

DEVON ENERGY PRODUCTION COMPANY, L.P.  
**THISTLE UNIT 118H**

LOCATED 621 FT. FROM THE SOUTH LINE  
AND 2199 FT. FROM THE WEST LINE OF  
SECTION 34, TOWNSHIP 23 SOUTH,  
RANGE 33 EAST, N.M.P.M.  
LEA COUNTY, STATE OF NEW MEXICO

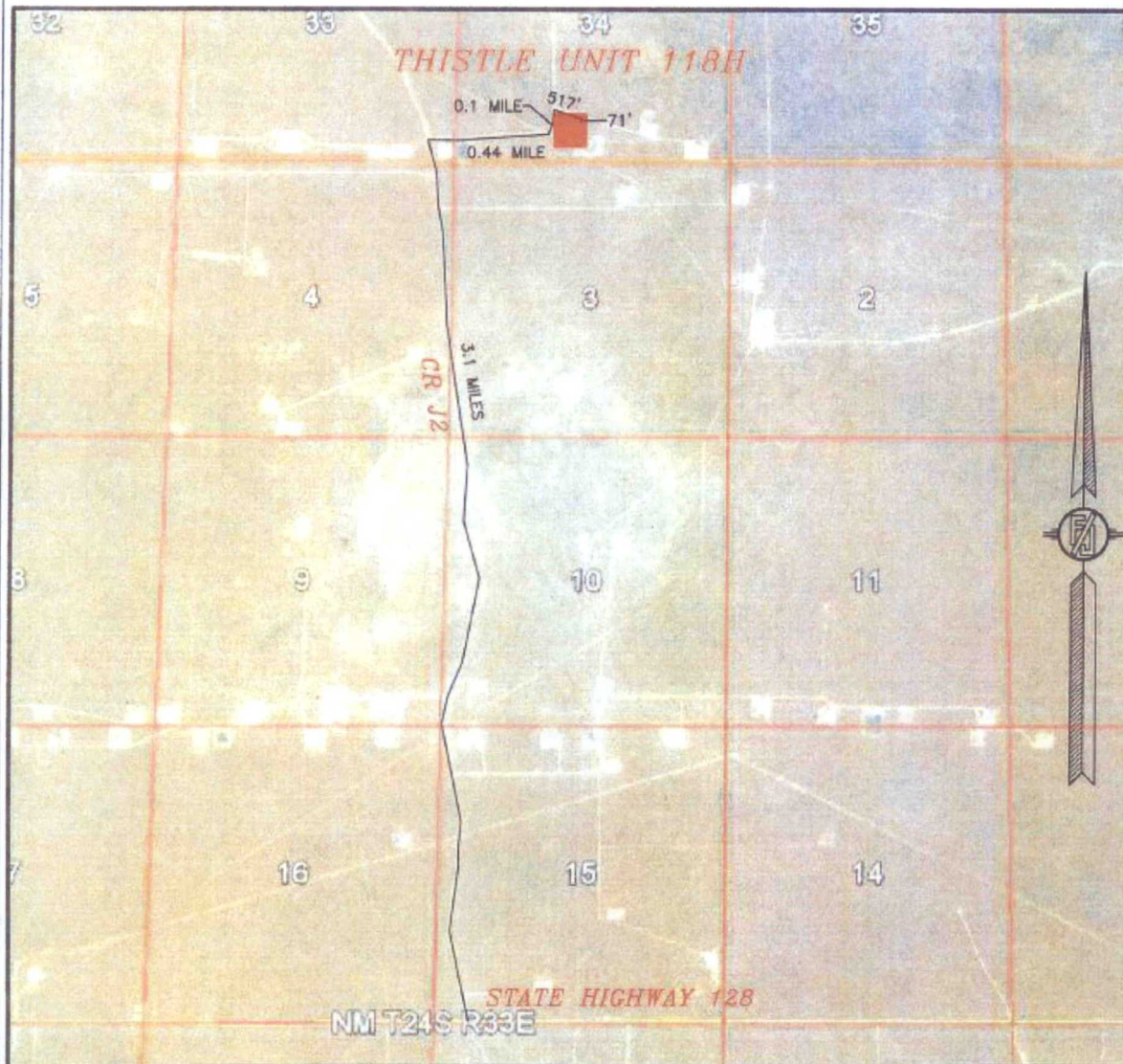
JUNE 14, 2016

SURVEY NO. 4704

MADRON SURVEYING, INC. 301 SOUTH CANAL (575) 234-3341 CARLSBAD, NEW MEXICO



SECTION 34, TOWNSHIP 23 SOUTH, RANGE 33 EAST, N.M.P.M.  
LEA COUNTY, STATE OF NEW MEXICO  
ACCESS AERIAL ROUTE MAP



NOT TO SCALE  
AERIAL PHOTO:  
GOOGLE EARTH  
FEBRUARY 2014

DEVON ENERGY PRODUCTION COMPANY, L.P.  
**THISTLE UNIT 118H**

LOCATED 621 FT. FROM THE SOUTH LINE  
AND 2199 FT. FROM THE WEST LINE OF  
SECTION 34, TOWNSHIP 23 SOUTH,  
RANGE 33 EAST, N.M.P.M.  
LEA COUNTY, STATE OF NEW MEXICO

JUNE 14, 2016

SURVEY NO. 4704

MADRON SURVEYING, INC. 301 SOUTH CANAL (575) 234-3341 CARLSBAD, NEW MEXICO