

HOBBS OIL

OCT 27 2016

RECEIVED
WELL LOCATIONS

Energy, Minerals & Natural Resources Department

CONSERVATION DIVISION

Santa Fe, NM 87505

District Office

☐ AMENDED REPORT

WELL LOCATION AND ACREAGE DEDICATION PLAT

Surface Location

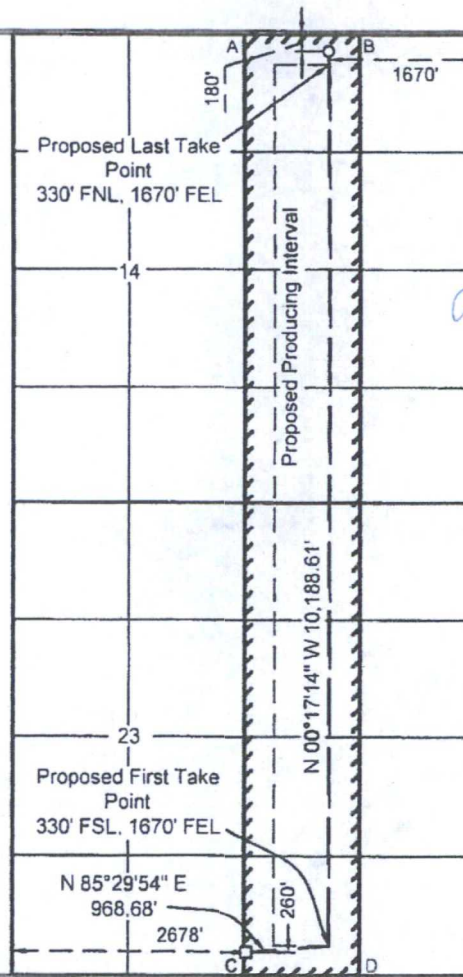
" Bottom Hole Location If Different From Surface

12 Dedicated Acres 320	13 Joint or Infill	14 Consolidation Code	15 Order No.
---------------------------	--------------------	-----------------------	--------------

PROPOSED BOTTOM HOLE LOCATION		
X=	714,221	NAD 27
Y=	382,487	
LAT	32 049685	
LONG	103 641919	
X=	755,408	NAD83
Y=	382,544	
LAT	32 049811	
LONG	103 642389	

SO WE 23 FED P25 4H WELL		
X=	713,307	NAD 27
Y=	372,222	
LAT	32 021486	
LONG	103 645082	
X=	754,494	NAD83
Y=	372,279	
LAT	32.021611	
LONG	103 645551	
ELEVATION +3123 NAVD 88		

A - Y=382660.57, X=713234.95
B - Y=382668.90, X=714562.55
C - Y=371962.12, X=713287.04
D - Y=371970.41, X=714615.34



I hereby certify that the information contained herein is true and complete to the best of my knowledge and belief and that this organization either owns a working interest or unleased mineral interest in the land including the proposed bottom hole location or has a right to drill this well at this location pursuant to a contract with an owner of such a mineral or working interest or to a voluntary pooling agreement or a compulsory pooling order heretofore required by the division

Signature _____ Date _____
 Denise Pinkerton
 Printed Name _____
 Leakejd@chevron.com
 E-mail Address _____

I hereby certify that the well location shown on this plat was plotted from field notes of actual surveys made by me or under my supervision, and that the same is true and correct to the best of my belief.

02-08-2016
Date of Survey
5-18-2016
Signature and Seal of Professional Surveyor

Signature and Seal of Professional Surveyor **523006**

23006
Certificate Number