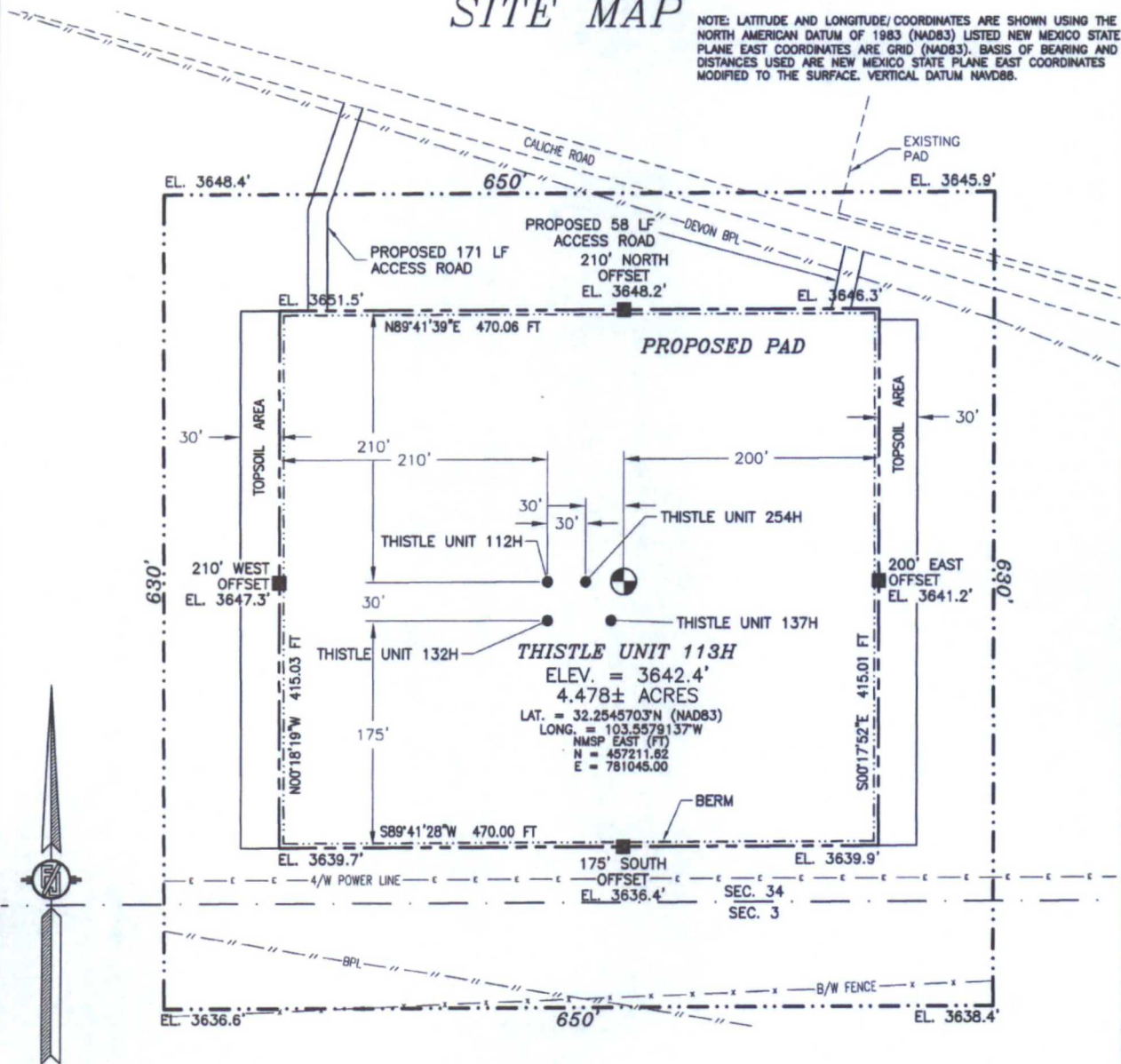


Form C-102  
Revised August 1, 2011  
Submit one copy to appropriate  
District Office  
☐ AMENDED REPORT

SURVEY NO. 4706B

SECTION 34, TOWNSHIP 23 SOUTH, RANGE 33 EAST, N.M.P.M.  
LEA COUNTY, STATE OF NEW MEXICO  
**SITE MAP**

NOTE: LATITUDE AND LONGITUDE/COORDINATES ARE SHOWN USING THE NORTH AMERICAN DATUM OF 1983 (NAD83) LISTED NEW MEXICO STATE PLANE EAST COORDINATES ARE GRID (NAD83). BASIS OF BEARING AND DISTANCES USED ARE NEW MEXICO STATE PLANE EAST COORDINATES MODIFIED TO THE SURFACE. VERTICAL DATUM NAVD88.



0 12 60 120 240

SCALE 1" = 120'

**DIRECTIONS TO LOCATION**

FROM STATE HIGHWAY 128 AND CR J2 (BRINNSTOOL) GO NORTH ON CR J2 3.1 MILES, TURN RIGHT ON CALICHE ROAD AND GO EAST 0.44 OF A MILE, BEND LEFT AND GO NORTH 0.1 OF A MILE, BEND RIGHT AND GO SOUTHEAST 0.31 OF A MILE TO A PROPOSED ROAD SURVEY AND FOLLOW FLAGS SOUTH 58' TO THE NORTHEAST PAD CORNER FOR THIS LOCATION.

DEVON ENERGY PRODUCTION COMPANY, L.P.  
**THISTLE UNIT 113H**

LOCATED 248 FT. FROM THE SOUTH LINE  
AND 1932 FT. FROM THE EAST LINE OF  
SECTION 34, TOWNSHIP 23 SOUTH,  
RANGE 33 EAST, N.M.P.M.  
LEA COUNTY, STATE OF NEW MEXICO

NOVEMBER 7, 2016

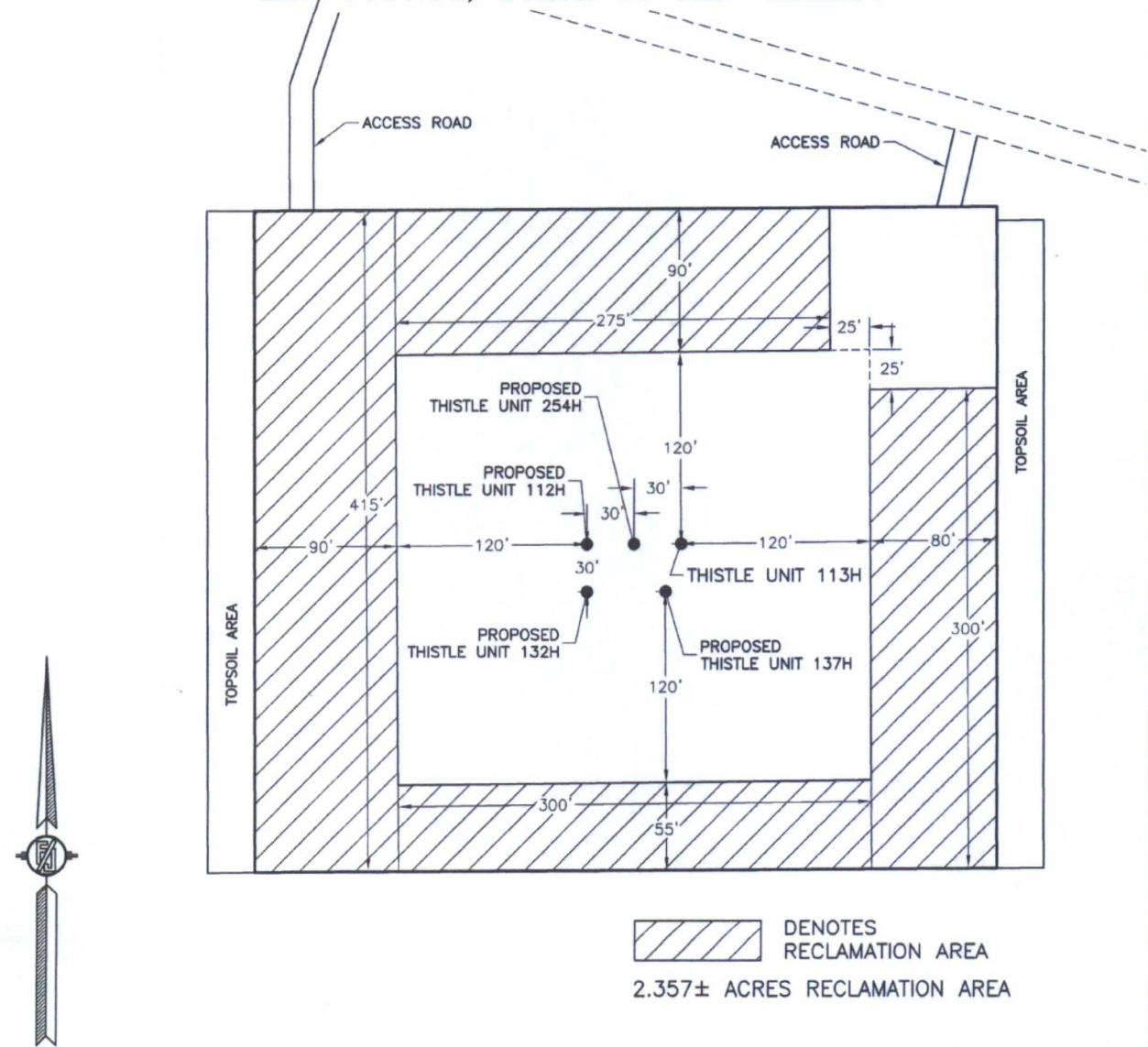
SURVEY NO. 4706B

MADRON SURVEYING, INC. 301 SOUTH CANAL (575) 234-3341

CARLSBAD, NEW MEXICO



**PROPOSED INTERIM SITE RECLAMATION  
FOR THISTLE UNIT 113H**  
SECTION 34, TOWNSHIP 23 SOUTH, RANGE 33 EAST, N.M.P.M.  
LEA COUNTY, STATE OF NEW MEXICO

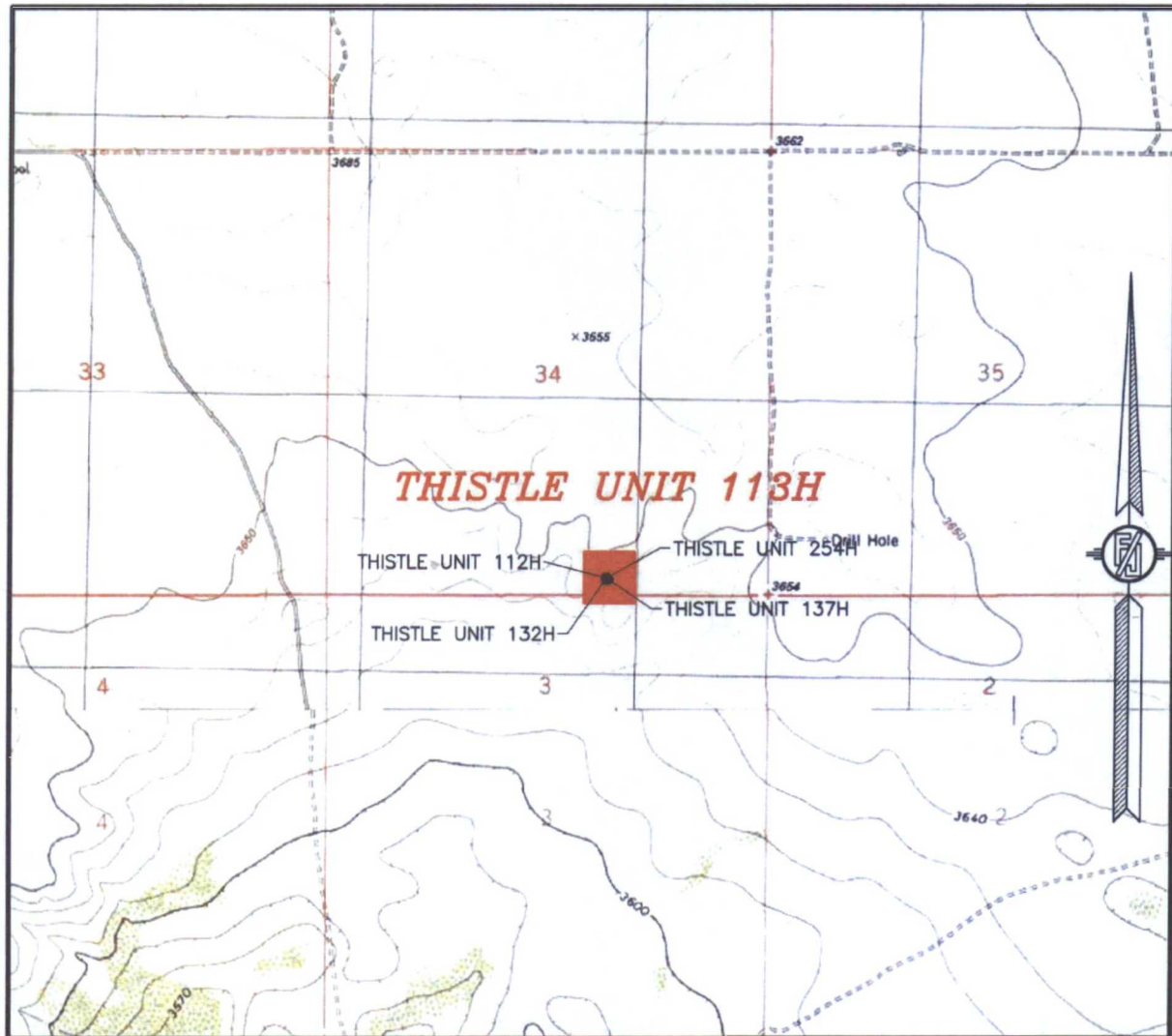


DEVON ENERGY PRODUCTION COMPANY, L.P.  
**THISTLE UNIT 113H**  
LOCATED 248 FT. FROM THE SOUTH LINE  
AND 1932 FT. FROM THE EAST LINE OF  
SECTION 34, TOWNSHIP 23 SOUTH,  
RANGE 33 EAST, N.M.P.M.  
LEA COUNTY, STATE OF NEW MEXICO

NOVEMBER 7, 2016

MADRON SURVEYING, INC. 301 SOUTH CANAL (575) 234-3341 **CARLSBAD, NEW MEXICO** SURVEY NO. 4706B

SECTION 34, TOWNSHIP 23 SOUTH, RANGE 33 EAST, N.M.P.M.  
LEA COUNTY, STATE OF NEW MEXICO  
LOCATION VERIFICATION MAP



USGS QUAD MAP:  
TIP TOP WELLS

NOT TO SCALE

DEVON ENERGY PRODUCTION COMPANY, L.P.  
**THISTLE UNIT 113H**

LOCATED 248 FT. FROM THE SOUTH LINE  
AND 1932 FT. FROM THE EAST LINE OF  
SECTION 34, TOWNSHIP 23 SOUTH,  
RANGE 33 EAST, N.M.P.M.  
LEA COUNTY, STATE OF NEW MEXICO

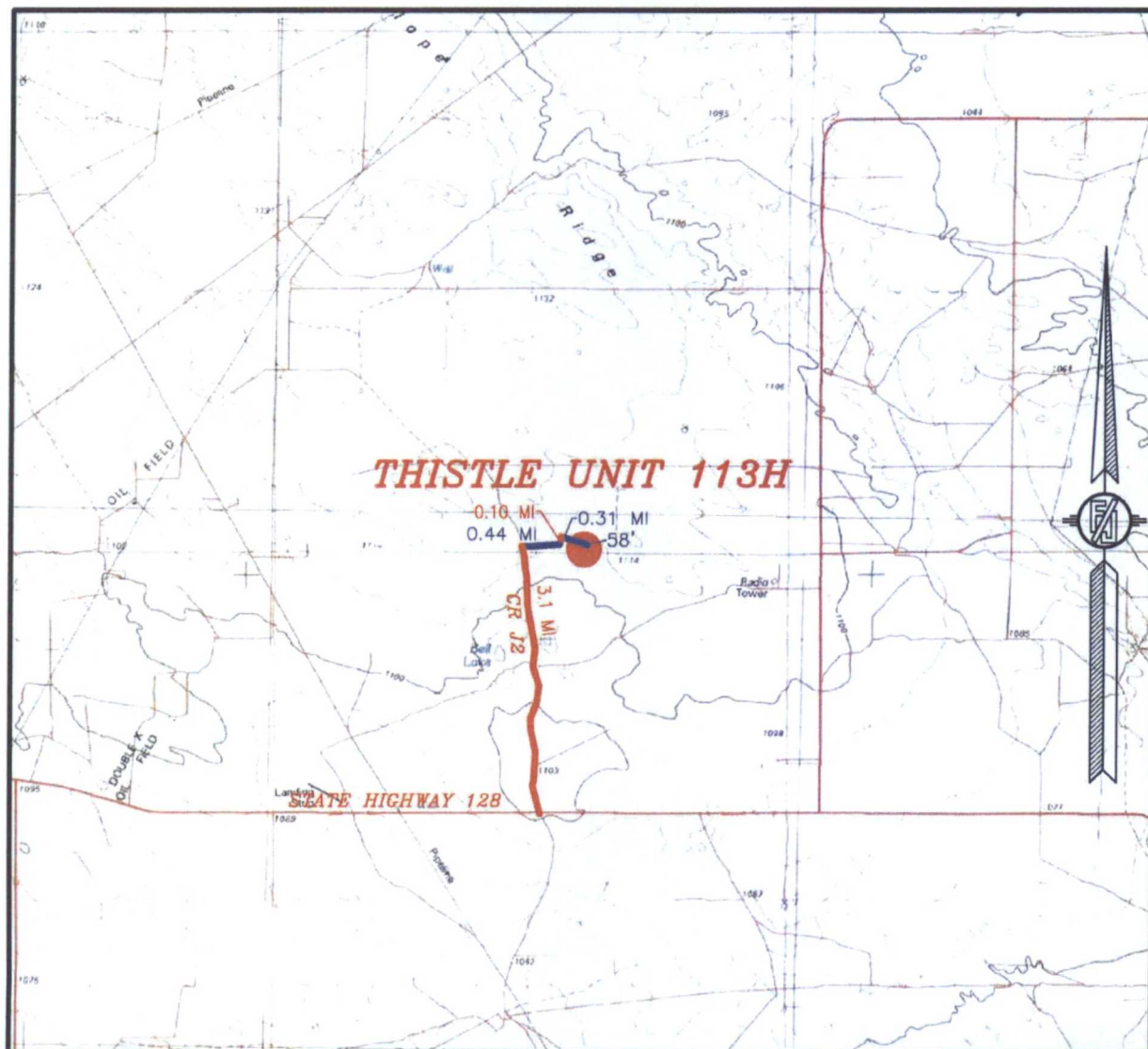
NOVEMBER 7, 2016

SURVEY NO. 4706B

MADRON SURVEYING, INC. 301 SOUTH CANAL (575) 234-3341 CARLSBAD, NEW MEXICO



SECTION 34, TOWNSHIP 23 SOUTH, RANGE 33 EAST, N.M.P.M.  
LEA COUNTY, STATE OF NEW MEXICO  
VICINITY MAP



DISTANCES IN MILES

NOT TO SCALE

DEVON ENERGY PRODUCTION COMPANY, L.P.  
**THISTLE UNIT 113H**

LOCATED 248 FT. FROM THE SOUTH LINE  
AND 1932 FT. FROM THE EAST LINE OF  
SECTION 34, TOWNSHIP 23 SOUTH,  
RANGE 33 EAST, N.M.P.M.  
LEA COUNTY, STATE OF NEW MEXICO

**DIRECTIONS TO LOCATION**

FROM STATE HIGHWAY 128 AND CR J2 (BRININSTOOL) GO NORTH ON CR J2 3.1 MILES, TURN RIGHT ON CALICHE ROAD AND GO EAST 0.44 OF A MILE, BEND LEFT AND GO NORTH 0.1 OF A MILE, BEND RIGHT AND GO SOUTHEAST 0.31 OF A MILE TO A PROPOSED ROAD SURVEY AND FOLLOW FLAGS SOUTH 58° TO THE NORTHEAST PAD CORNER FOR THIS LOCATION.

NOVEMBER 7, 2016

MADRON SURVEYING, INC. 301 SOUTH CANAL (575) 234-3341 CARLSBAD, NEW MEXICO

SURVEY NO. 4706B



SECTION 34, TOWNSHIP 23 SOUTH, RANGE 33 EAST, N.M.P.M.  
LEA COUNTY, STATE OF NEW MEXICO  
**AERIAL PHOTO**



NOT TO SCALE  
AERIAL PHOTO:  
GOOGLE EARTH  
FEBRUARY 2014

**DEVON ENERGY PRODUCTION COMPANY, L.P.**

**THISTLE UNIT 113H**

LOCATED 248 FT. FROM THE SOUTH LINE  
AND 1932 FT. FROM THE EAST LINE OF  
SECTION 34, TOWNSHIP 23 SOUTH,  
RANGE 33 EAST, N.M.P.M.  
LEA COUNTY, STATE OF NEW MEXICO

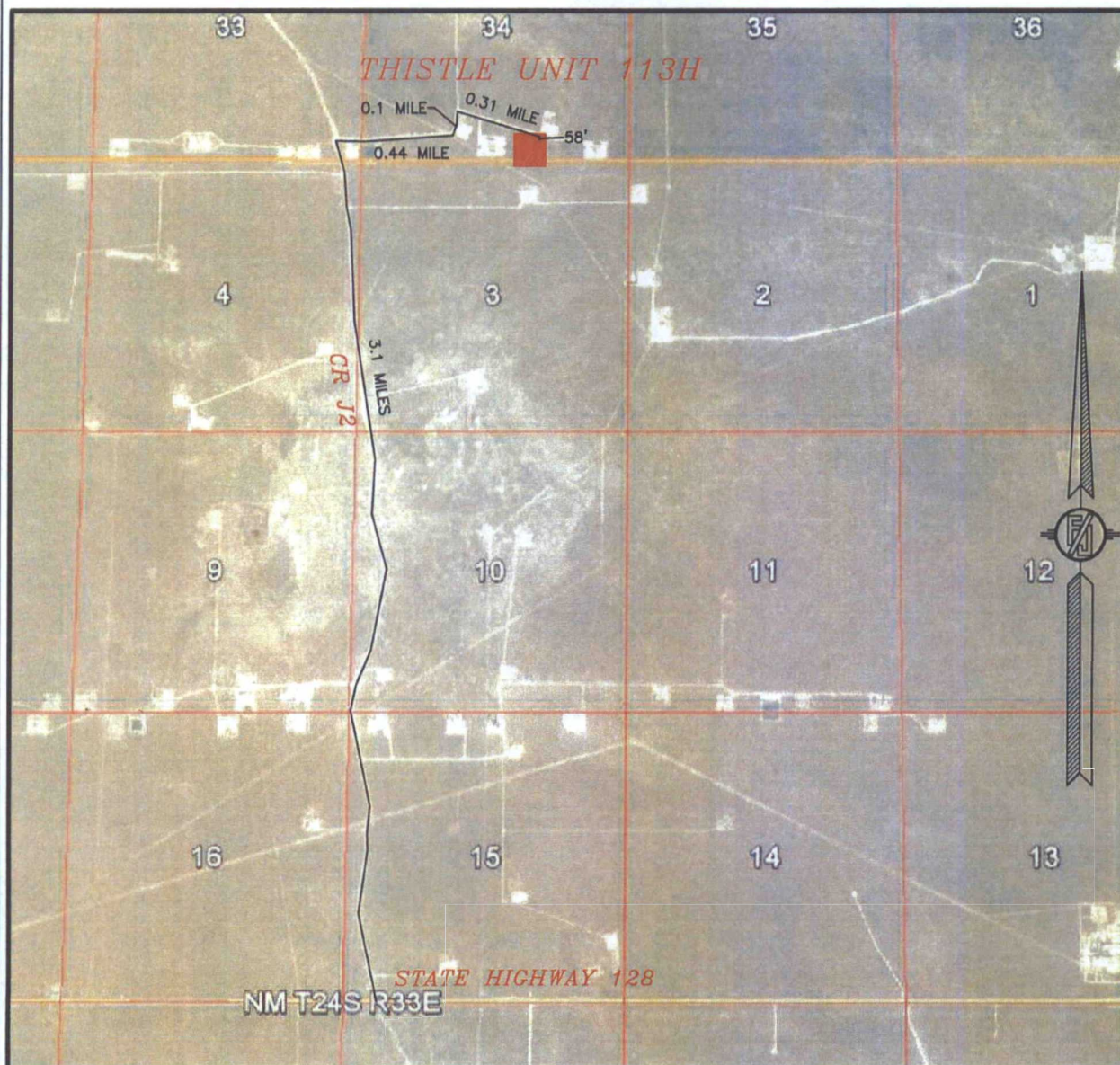
NOVEMBER 7, 2016

SURVEY NO. 4706B

MADRON SURVEYING, INC. 301 SOUTH CANAL (575) 234-3341 CARLSBAD, NEW MEXICO



SECTION 34, TOWNSHIP 23 SOUTH, RANGE 33 EAST, N.M.P.M.  
LEA COUNTY, STATE OF NEW MEXICO  
**ACCESS AERIAL ROUTE MAP**



NOT TO SCALE  
AERIAL PHOTO:  
GOOGLE EARTH  
FEBRUARY 2014

**DEVON ENERGY PRODUCTION COMPANY, L.P.**

**THISTLE UNIT 113H**

LOCATED 248 FT. FROM THE SOUTH LINE  
AND 1932 FT. FROM THE EAST LINE OF  
SECTION 34, TOWNSHIP 23 SOUTH,  
RANGE 33 EAST, N.M.P.M.  
LEA COUNTY, STATE OF NEW MEXICO

NOVEMBER 7, 2016

SURVEY NO. 4706B

MADRON SURVEYING, INC. 301 SOUTH CANAL (575) 234-3341 CARLSBAD, NEW MEXICO