

District I  
1625 N. French Dr., Hobbs, NM 88240  
Phone: (575) 393-6161 Fax: (575) 393-0720  
District II  
811 S. First St., Artesia, NM 88210  
Phone: (575) 748-1283 Fax: (575) 748-9720  
District III  
1000 Rio Brazos Road, Aztec, NM 87410  
Phone: (505) 334-6178 Fax: (505) 334-6170  
District IV  
1220 S. St. Francis Dr., Santa Fe, NM 87505  
Phone: (505) 476-3460 Fax: (505) 476-3462

State of New Mexico  
Energy, Minerals & Natural Resources  
Department  
OIL CONSERVATION DIVISION  
1220 South St. Francis Dr.  
Santa Fe, NM 87505

FORM C-102

Revised August 1, 2011

Submit one copy to appropriate

District Office

☐ AMENDED REPORT

WELL LOCATION AND ACREAGE DEDICATION PLAT

<sup>1</sup> API Number 30-025- 43129	<sup>2</sup> Pool Code 98105	<sup>3</sup> Pool Name WC-025 G-09 S263416B; Upper Wolfcamp
<sup>4</sup> Property Code 40383	<sup>5</sup> Property Name NAUTILUS 16 STATE COM	<sup>6</sup> Well Number #703H
<sup>7</sup> OGRID No. 7377	<sup>8</sup> Operator Name EOG RESOURCES, INC.	<sup>9</sup> Elevation 3341'

<sup>10</sup>Surface Location

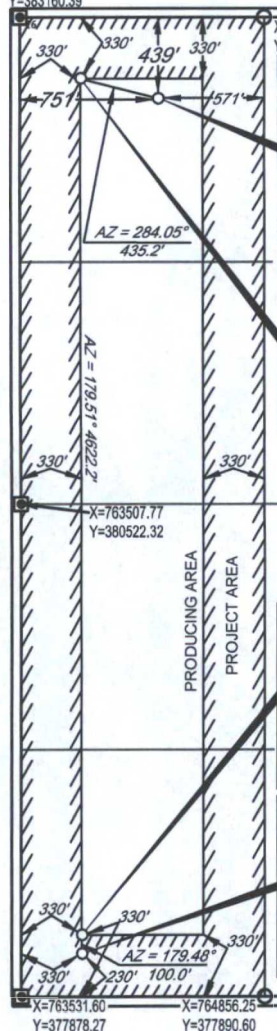
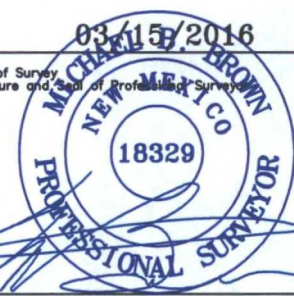
UL or lot no.	Section	Township	Range	Lot Idn	Feet from the	North/South line	Feet from the	East/West line	County
D	16	26-S	34-E	-	439'	NORTH	751'	WEST	LEA

UL or lot no.	Section	Township	Range	Lot Idn	Feet from the	North/South line	Feet from the	East/West line	County
M	16	26-S	34-E	-	230'	SOUTH	354	WEST	LEA

<sup>12</sup> Dedicated Acres 160.00	<sup>13</sup> Joint or Infill	<sup>14</sup> Consolidation Code	<sup>15</sup> Order No.
---	-------------------------------	----------------------------------	-------------------------

No allowable will be assigned to this completion until all interests have been consolidated or a non-standard unit has been approved by the division.

X=763486.22  
Y=383160.39

	<p><b>SURFACE LOCATION</b> NEW MEXICO EAST NAD 1927 X=764241 Y=382728 LAT.: N 32.0493642 LONG.: W 103.4804846</p> <p><b>UPPER MOST PERF.</b> NEW MEXICO EAST NAD 1927 X=763819 Y=382833 LAT.: N 32.0496639 LONG.: W 103.4818445</p> <p><b>LOWER MOST PERF.</b> NEW MEXICO EAST NAD 1927 X=763859 Y=378211 LAT.: N 32.0369583 LONG.: W 103.4818340</p> <p><b>BOTTOM HOLE LOCATION</b> NEW MEXICO EAST NAD 1927 X=763860 Y=378111 LAT.: N 32.0366834 LONG.: W 103.4818336</p>	<p><b>17 OPERATOR CERTIFICATION</b> I hereby certify that the information contained herein is true and complete to the best of my knowledge and belief, and that this organization either owns a working interest or unleased mineral interest in the land including the proposed bottom hole location or has a right to drill this well at this location pursuant to a contract with an owner of such a mineral or working interest, or to a voluntary pooling agreement or a compulsory pooling order heretofore entered by the division.</p> <p><i>Stan Wagner</i> 3/17/16 Signature Date Stan Wagner Printed Name E-mail Address</p> <p><b>18 SURVEYOR CERTIFICATION</b> I hereby certify that the well location shown on this plat was plotted from field notes of actual surveys made by me or under my supervision, and that the same is true to the best of my belief.</p> <p>03/15/2016 Date of Survey Signature and Seal of Professional Surveyor  Certificate Number</p>
--	---	--

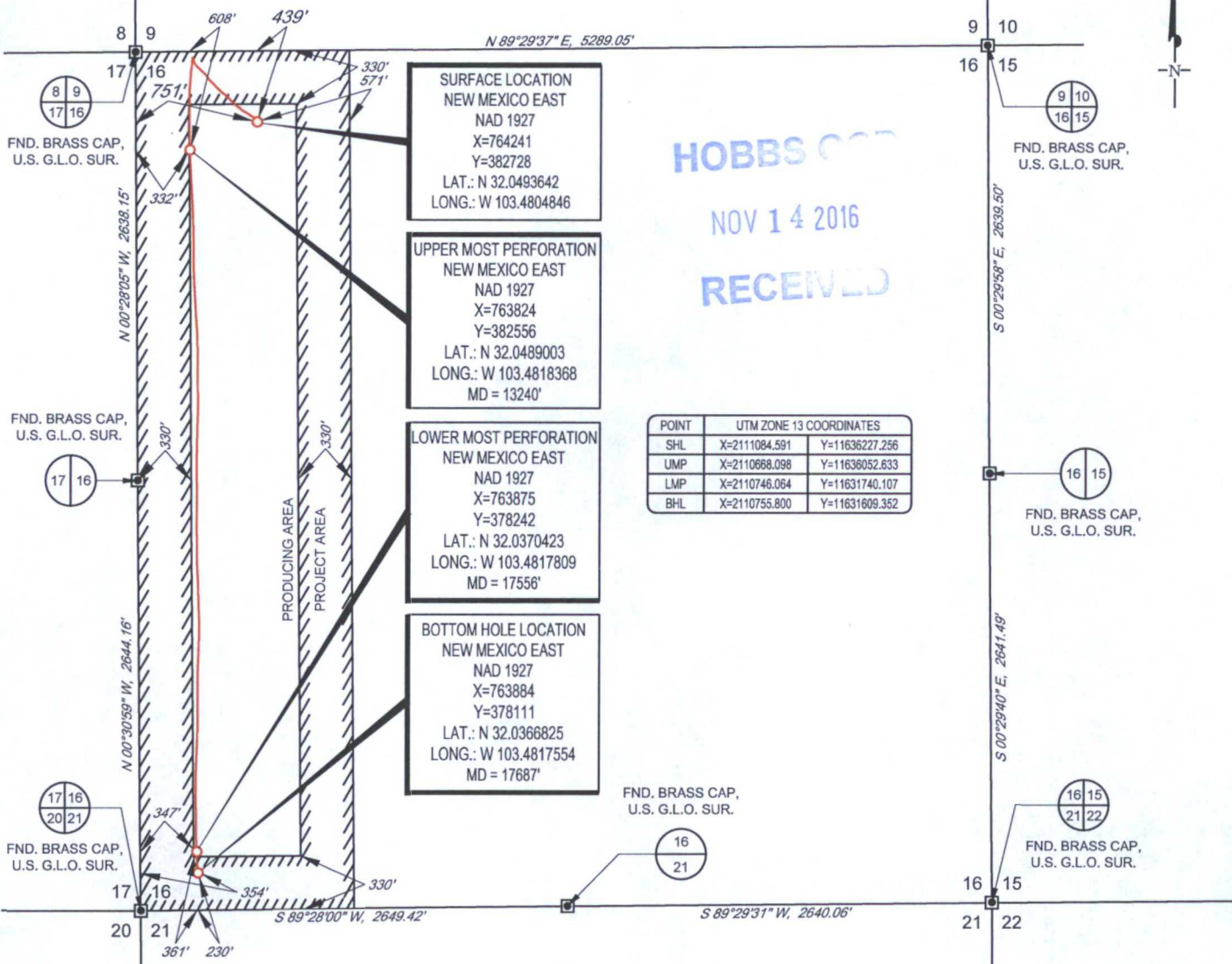


SCALE: 1" = 1000'

0' 500' 1000'

SECTION 16, TOWNSHIP 26-S, RANGE 34-E, N.M.P.M.  
LEA COUNTY, NEW MEXICO

HOBBS CO  
NOV 14 2016  
RECEIVED



LEASE NAME & WELL NO.: NAUTILUS 16 STATE COM #703H  
SECTION 16 TWP 26-S RGE 34-E SURVEY N.M.P.M.  
COUNTY LEA STATE NM ELEVATION 3341'  
DESCRIPTION 439' FNL & 751' FWL



**TOPOGRAPHIC**  
LOYALTY INNOVATION LEGACY

1400 EVERMAN PARKWAY, Ste. 197 • FT. WORTH, TEXAS 76140  
TELEPHONE: (817) 744-7512 • FAX (817) 744-7548  
2903 NORTH BIG SPRING • MIDLAND, TEXAS 79705  
TELEPHONE: (432) 682-1653 OR (800) 767-1653 • FAX (432) 682-1743  
WWW.TOPOGRAPHIC.COM



Michael Blake Brown, P.S. No. 18329  
AUGUST 2, 2016



<b>NAUTILUS 16</b> <b>STATE COM #703H</b> <b>AS-COMPLETED</b>  <b>DATE:</b> 08/02/16 <b>FILE:</b> AD_NAUTILUS16STATECOM_703H <b>DRAWN BY:</b> A.C.C. <b>SHEET:</b> 1 OF 1	<b>REVISION:</b>     	<b>NOTES:</b> 1. ORIGINAL DOCUMENT SIZE: 8.5" X 11" 2. ALL BEARINGS, DISTANCES, AND COORDINATE VALUES CONTAINED HEREIN ARE GRID BASED UPON THE NEW MEXICO STATE PLANE COORDINATE SYSTEM, EAST ZONE, U.S. SURVEY FEET, NORTH AMERICAN DATUM 19 27. 3. THIS WELL LOCATION SHOWN HEREON HAS BEEN SURVEYED ON THE GROUND UNDER MY SUPERVISION AND PREPARED ACCORDING TO THE EVIDENCE FOUND AT THE TIME OF SURVEY, AND DATA PROVIDED BY EOG RESOURCES, INC. THIS CERTIFICATION IS MADE AND LIMITED TO THOSE PERSONS OR ENTITIES SHOWN ON THE FACE OF THIS PLAT AND IS NON-TRANSFERABLE. THIS SURVEY IS CERTIFIED FOR THIS TRANSACTION ONLY.