

DISTRICT I
1685 N. French Dr., Hobbs, NM 88240

DISTRICT II
1301 W. Grand Avenue, Artesia, NM 88210

DISTRICT III
1000 Rio Brazos Rd., Aztec, NM 87410

DISTRICT IV
1220 S. St. Francis Dr., Santa Fe, NM 87505

State of New Mexico
Energy, Minerals & Natural Resources Department

OIL CONSERVATION DIVISION
1220 South St. Frances Dr.
Santa Fe, NM 87505

Form C-102
Revised October 12, 2005
Submit to Appropriate District Office
State Lease - 4 Copies
Fee Lease - 3 Copies

☐ AMENDED REPORT

WELL LOCATION AND ACREAGE DEDICATION PLAT

API Number 30-025- 43499	Pool Code 17650	Pool Name Dickenson; San Andres
Property Code 317159	Property Name MOE 35 SA UNIT	Well Number 1-04H 104H
GRID No. 310809	Operator Name NEMO FUND I, LLC	Elevation 3980'

Surface Location

UL or lot No.	Section	Township	Range	Lot Idn	Feet from the	North/South line	Feet from the	East/West line	County
A	35	10 S	36 E		10	NORTH	1310	EAST	LEA

Bottom Hole Location If Different From Surface

UL or lot No.	Section	Township	Range	Lot Idn	Feet from the	North/South line	Feet from the	East/West line	County
P	35	10 S	36 E		330	SOUTH	660	EAST	LEA

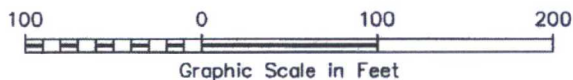
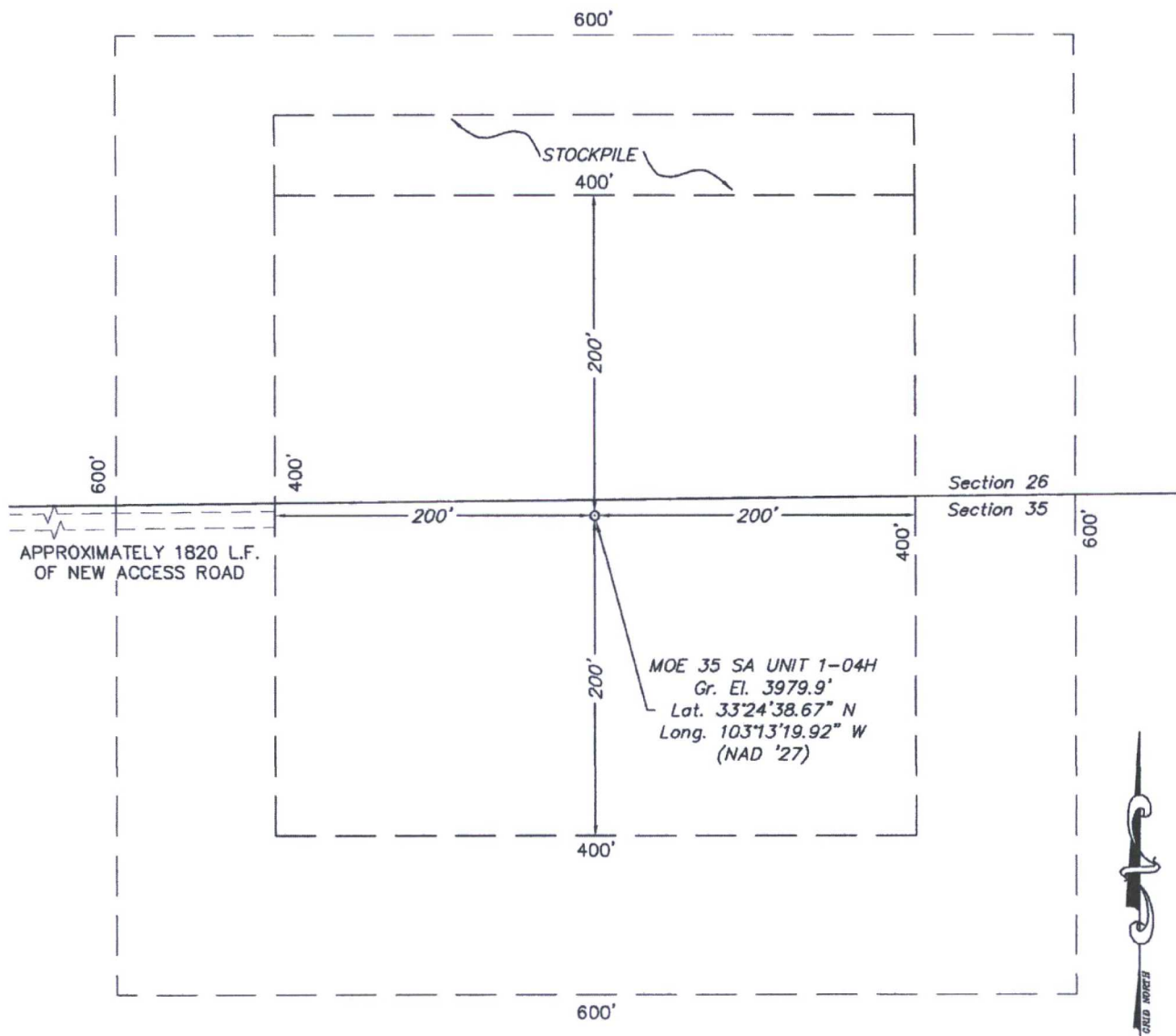
Dedicated Acres 160	Joint or Infill N	Consolidation Code	Order No.
------------------------	----------------------	--------------------	-----------

NO ALLOWABLE WILL BE ASSIGNED TO THIS COMPLETION UNTIL ALL INTERESTS HAVE BEEN CONSOLIDATED OR A NON-STANDARD UNIT HAS BEEN APPROVED BY THE DIVISION

<p><u>GEODETTIC COORDINATES</u> NAD 27 NME</p> <p><u>SURFACE LOCATION</u> X = 839076.10 Y = 878762.14</p> <p>LAT. = 33°24'38.67" N LONG. = 103°13'19.92" W</p> <p><u>BOTTOM HOLE LOCATION</u> X = 839781.73 Y = 873831.47</p> <p><u>CORNER COORDINATES</u> TABLE</p> <table><tr><td>A:</td><td>X=839066.40 Y=878772.03</td></tr><tr><td>B:</td><td>X=840385.92 Y=878786.08</td></tr><tr><td>C:</td><td>X=840445.51 Y=873508.76</td></tr><tr><td>D:</td><td>X=839125.46 Y=873494.22</td></tr></table> <p>Scale 1" = 1000'</p> <p>NOTE: 1) Plane Coordinates and Bearings shown hereon are Transverse Mercator Grid and Conform to the "New Mexico Coordinate System", New Mexico East Zone, North American Datum of 1927. To obtain surface values multiply by a factor of 1.00004346.</p>	A:	X=839066.40 Y=878772.03	B:	X=840385.92 Y=878786.08	C:	X=840445.51 Y=873508.76	D:	X=839125.46 Y=873494.22	<p>10' A</p> <p>#1-04H (SL)</p> <p>Pt of first take</p> <p>35</p> <p>330' Offset Area</p> <p>Producing Area</p> <p>330' Offset Area</p> <p>B</p> <p>330'</p> <p>660'</p> <p>Pt of last take</p> <p>D</p> <p>C</p>	<p>OPERATOR CERTIFICATION</p> <p>I hereby certify the information contained herein is true and complete to the best of my knowledge and belief, and that this organization either owns a working interest or mineral interest in the land including the proposed bottom hole location or has a right to drill the well at this location pursuant to a contract with an owner of such a mineral or working interest or to a voluntary pooling agreement or a compulsory pooling order heretofore entered by the division.</p> <p><u>DJ Holcomb</u> 12/14/2016 Signature Date</p> <p>Danny J. Holcomb - Agent Printed Name</p> <p>SURVEYOR CERTIFICATION</p> <p>I hereby certify that the well location shown on this plat was plotted from field notes of actual surveys made by me or under my supervision and that the same is true and correct to the best of my belief.</p> <p>December 2, 2016 Date of Survey</p> <p><u>Lindsay GYGAX</u> Signature & Seal</p> <p>NEW MEXICO 23263 12-15-16 W.O. Num. 000-0596 Certificate No. Lindsay 23263</p>
A:	X=839066.40 Y=878772.03									
B:	X=840385.92 Y=878786.08									
C:	X=840445.51 Y=873508.76									
D:	X=839125.46 Y=873494.22									

SECTIONS 26 & 35, TOWNSHIP 10 SOUTH, RANGE 36 EAST, N.M.P.M.
LEA COUNTY NEW MEXICO

2016-0596-1B



DRIVING DIRECTIONS

FROM THE INTERSECTION OF STATE HIGHWAY 206 AND U.S. HIGHWAY 380 IN TATUM, NEW MEXICO, GO EAST ON U.S. HIGHWAY 380 4.0 MILES TO BLEDSOE HWY. / CO. RD. 125 ON NORTH (LEFT) SIDE OF THE HIGHWAY. THEN GO NORTH AND NORTHEAST 11.5 MILES TO A LEASE ROAD ON THE WEST (LEFT) SIDE OF THE ROAD, THEN GO WEST ON LEASE ROAD 1.0 MILE AND NORTH 1.0 MILE TO A POINT APPROXIMATELY 0.40 MILE EAST OF THE PROPOSED LOCATION.



SURVEYORS - ENGINEERS - PLANNERS
FIRM REGISTRATION NUMBER: 100682-00
110 W. LOUISIANA AVE., SUITE 110
MIDLAND, TEXAS 79701
(432) 687-0865 - FAX (432) 687-0868

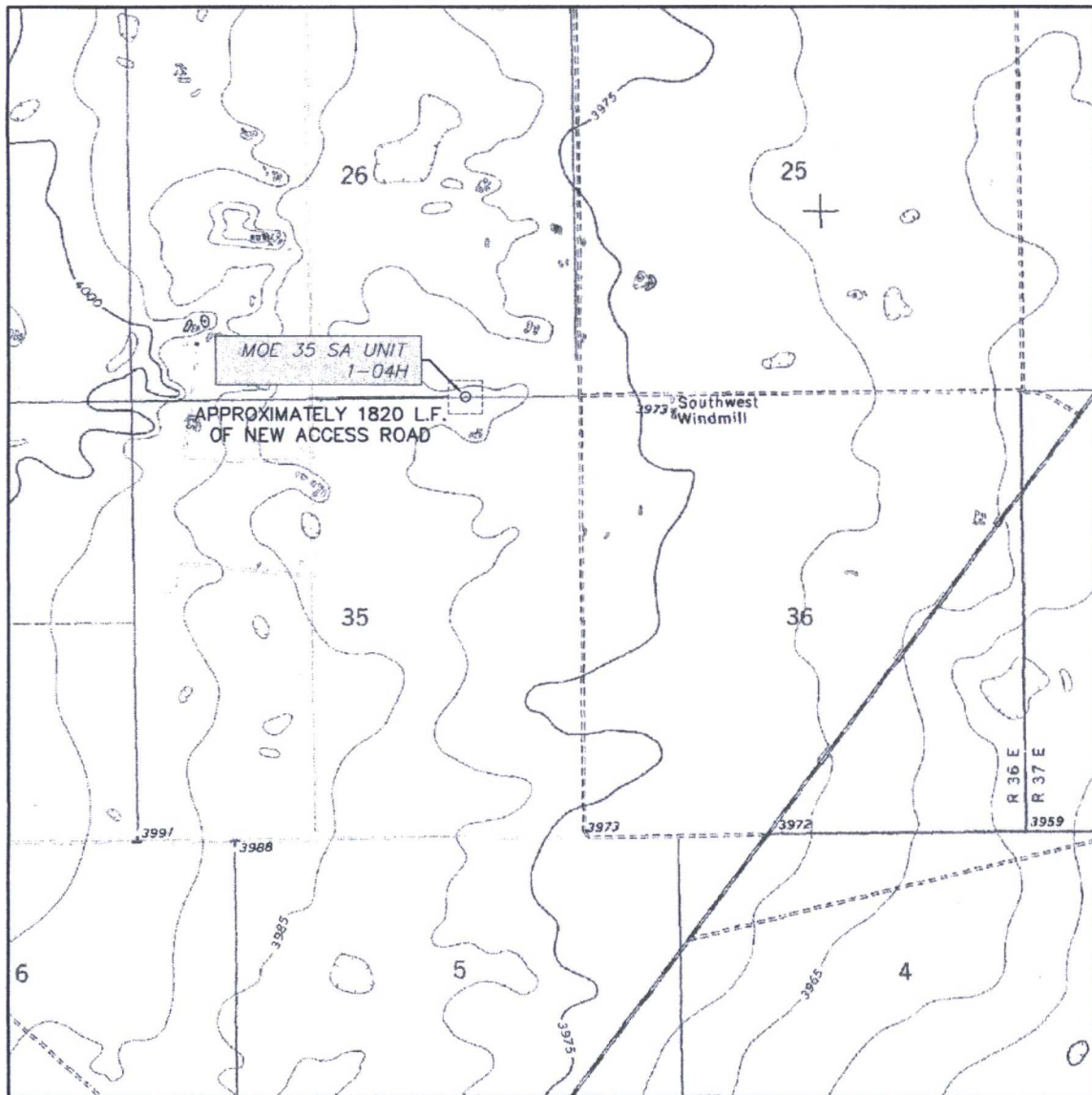
NEMO Fund I, LLC

MOE 35 SA UNIT 1-04H

Located 10' FNL & 1310' FEL, Section 35
Township 10 South, Range 36 East, N.M.P.M.
Lea County, New Mexico

Drawn By: SC	Date: December 7, 2016
Scale: 1" = 100'	Field Book: 1003/ 38
Revision Date: 12-12-2016	Quadrangle: Lea
W.O. No: 2016-0596	Dwg. No.: 2016-0596-1B

LOCATION VERIFICATION MAP



SCALE: 1" = 2000'

CONTOUR INTERVAL:
LEA - 10'

SEC. 35 TWP. 10-S RGE. 36-E

SURVEY N.M.P.M.

COUNTY LEA

DESCRIPTION 10' FNL & 1310' FEL

ELEVATION 3980'

OPERATOR NEMO FUND I, LLC

LEASE MOE 35 SA UNIT

U.S.G.S. TOPOGRAPHIC MAP

LEA



SURVEYORS - ENGINEERS - PLANNERS
FIRM REGISTRATION NUMBER: 100682-00
110 W. LOUISIANA AVE., SUITE 110
MIDLAND, TEXAS 79701
(800) 697-6825 FAX (800) 697-6826

PROPOSED WELLBORE DIAGRAM

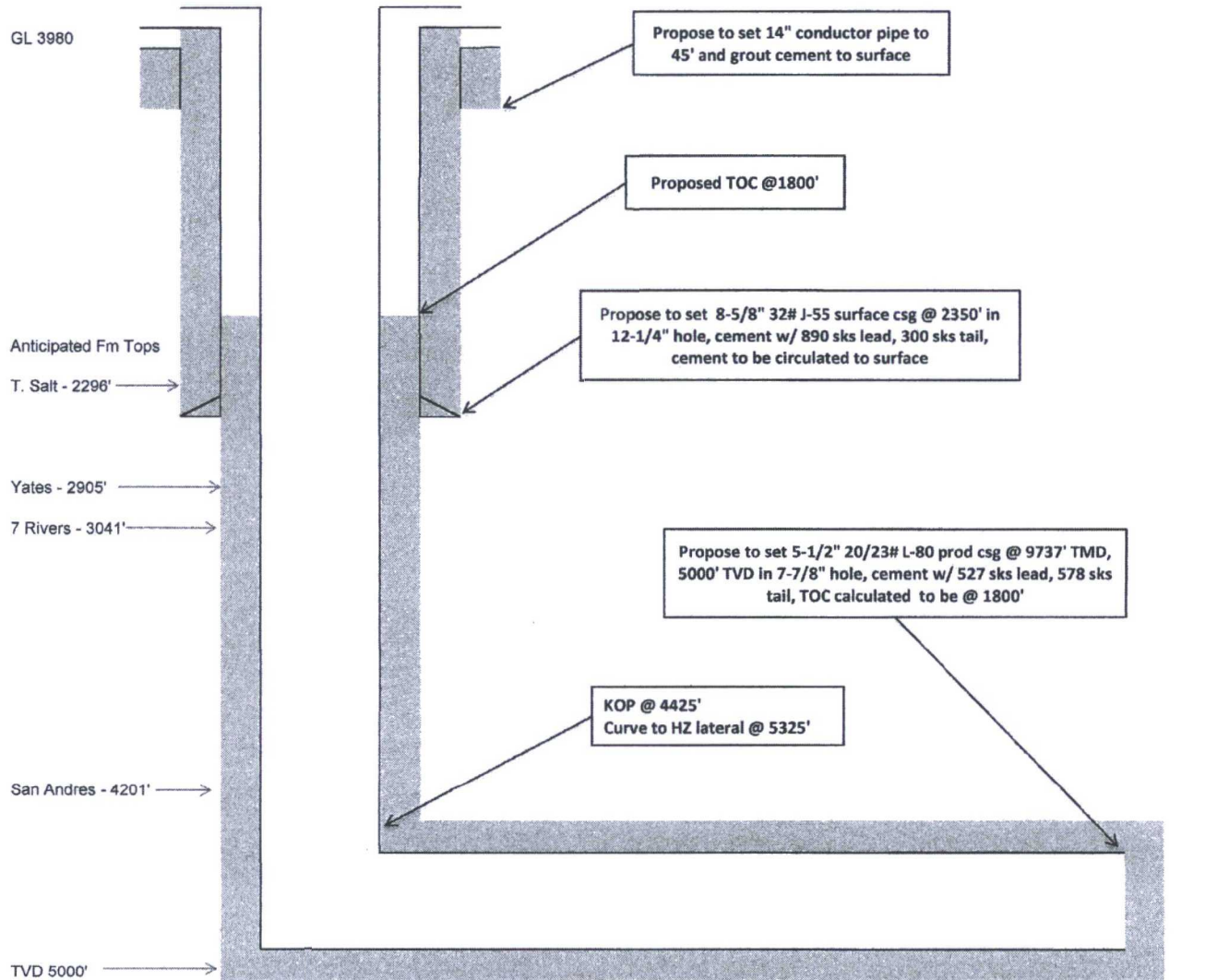
Nemo Fund I, LLC

Moe San Andres Unit 35 #1-04H

API # 30-025-TBD

SL - 10' FNL x 1310' FWL, UL 'A' Sec 35, T10S, R36E, Lea County, NM

BHL - 330' FSL x 660' FEL, UL 'P' Sec 35, T10S, R36E, Lea County, NM



Drawing Not to Scale

Moe San Andres Unit 35 #1-04H

A-35-10S-36E

Planned Directional Path

