

District I
1625 N. French Dr., Hobbs, NM 88240
Phone: (575) 393-6161 Fax: (575) 393-0720
District II
811 S. First St., Artesia, NM 88210
Phone: (575) 748-1283 Fax: (575) 748-9720
District III
1000 Rio Brazos Road, Aztec, NM 87410
Phone: (505) 334-6178 Fax: (505) 334-6170
District IV
1220 S. St. Francis Dr., Santa Fe, NM 87505
Phone: (505) 476-3460 Fax: (505) 476-3462

State of New Mexico
Energy, Minerals & Natural Resources Department
OIL CONSERVATION DIVISION
1220 South St. Francis Dr.
Santa Fe, NM 87505

HOBBS OCD
DEC 13 2016
RECEIVED

Form C-102
Revised August 1, 2011
Submit one copy to appropriate
District Office

☐ AMENDED REPORT

WELL LOCATION AND ACREAGE DEDICATION PLAT

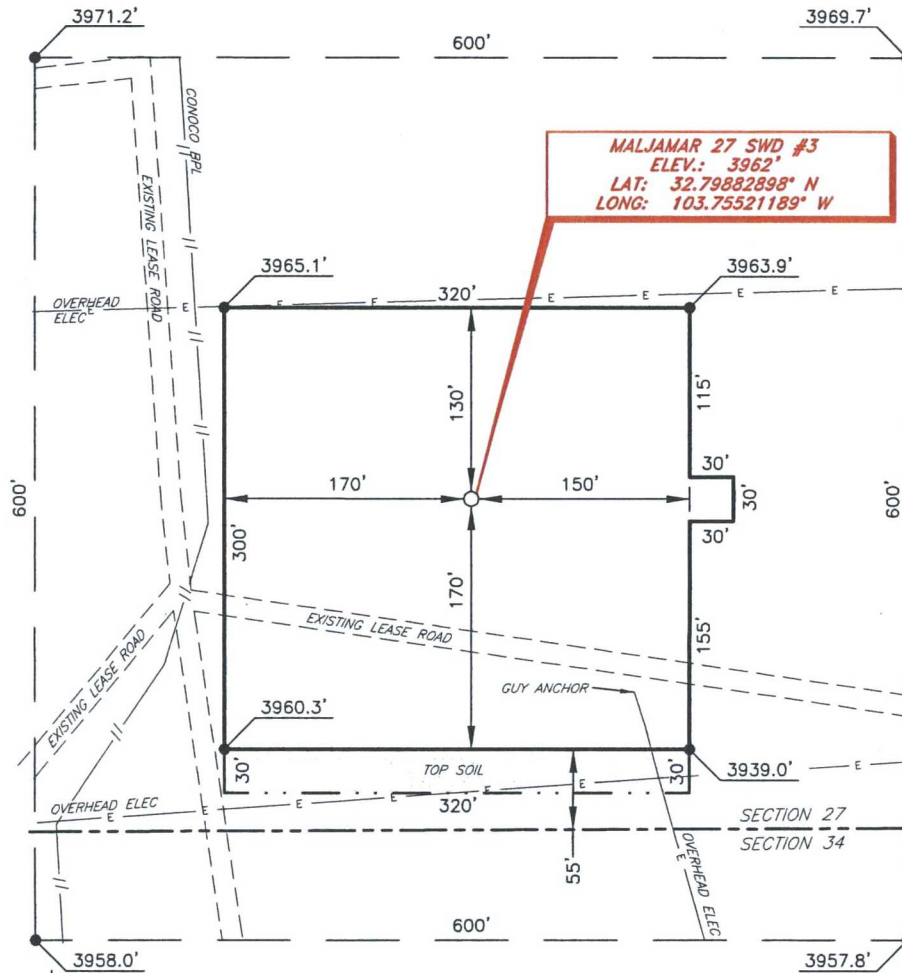
¹ API Number 30-025-43501		² Pool Code 96135		³ Pool Name SWD; WOLFCAMP					
⁴ Property Code 317173		⁵ Property Name MALJAMAR 27 SWD						⁶ Well Number 3	
⁷ OGRID NO. 229137		⁸ Operator Name COG OPERATING, LLC						⁹ Elevation 3962'	
¹⁰ Surface Location									
UL or lot no. N	Section 27	Township 17S	Range 32E	Lot Idn	Feet from the 225	North/South line SOUTH	Feet From the 2185	East/West line WEST	County LEA
¹¹ Bottom Hole Location If Different From Surface									
UL or lot no.	Section	Township	Range	Lot Idn	Feet from the	North/South line	Feet from the	East/West line	County
¹² Dedicated Acres 40		¹³ Joint or Infill		¹⁴ Consolidation Code		¹⁵ Order No.			

No allowable will be assigned to this completion until all interest have been consolidated or a non-standard unit has been approved by the division.

¹⁶ (B)		¹⁷ OPERATOR CERTIFICATION	
<p>DETAIL "A"</p> <p>3971.2' 600' 3969.7'</p> <p>600' S. L.</p> <p>3958.0' 3957.8'</p>		<p>I hereby certify that the information contained herein is true and complete to the best of my knowledge and belief, and that this organization either owns a working interest or unleased mineral interest in the land including the proposed bottom hole location or has a right to drill this well at this location pursuant to a contract with an owner of such a mineral or working interest, or to a voluntary pooling agreement or a compulsory pooling order heretofore entered by the division.</p>	
		<p>Signature: <i>Robyn M. Odom</i> Date: 5/28/2015</p> <p>Printed Name: Robyn M. Odom</p> <p>E-mail Address: Rodom@concho.com</p>	
<p>2185'</p> <p>225'</p> <p>SEE DETAIL "A"</p> <p>S. L.</p>		<p>¹⁸ SURVEYOR CERTIFICATION</p> <p>I hereby certify that the well location shown on this plat was plotted from field notes of actual surveys made by me or under my supervision, and that the same is true and correct to the best of my belief.</p>	
		<p>7/31/14</p> <p>Date of Survey</p> <p>Signature and Seal of Professional Surveyor: <i>Robert M. Howett</i></p> <p>19680</p> <p>Certificate Number</p>	
<p>RRC - Firm No.: TX 10193838 NM 4655451 - Job No.: LS140317</p>			

COG OPERATING, LLC

MALJAMAR 27 SWD #3
(225' FSL & 2185' FWL)
SECTION 27, T17S, R32E
N. M. P. M., LEA CO., NEW MEXICO



DIRECTIONS TO LOCATION

From the intersection of CR-126 (Maljamar Rd.) and Hwy 529;
Go North on CR-126 approx. 0.7 miles to a lease road;
Turn right on the lease road and go East approx. 0.4 miles;
Turn right and go South 300 feet;
Location is 200' east of the lease road.

SCALE: 1" = 100'
0 50 100
BEARINGS ARE
NAD 27 GRID - NM EAST
DISTANCES ARE
GROUND.

Firm No.: TX 10193838 NM 4655451

Copyright 2014 - All Rights Reserved

1	VDoor/Top	6/1/15
NO.	REVISION	DATE
JOB NO.:	LS140317	
DWG. NO.:	140317_PAD	

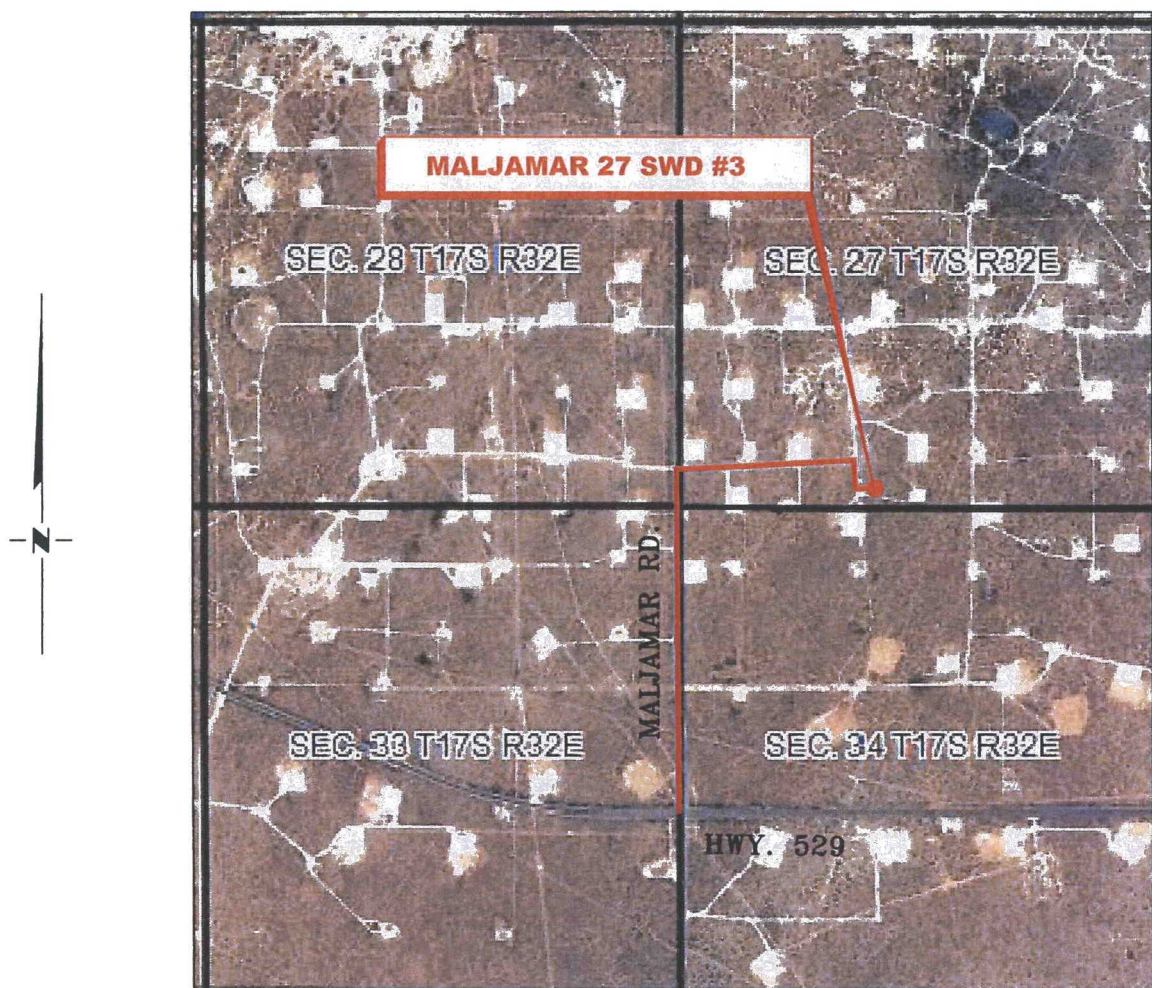
RRC

308 W. BROADWAY ST., HOBBS, NM 88240 (575) 964-8200

SCALE: 1" = 100'
DATE: 7-31-2014
SURVEYED BY: GB/IE
DRAWN BY: LNY
APPROVED BY: RMH
SHEET : 1 OF 1

VICINITY MAP

NOT TO SCALE



*SECTION 27, TWP. 17 SOUTH, RGE. 32 EAST,
N. M. P. M., LEA COUNTY, NEW MEXICO*

OPERATOR: COG Operating, LLC
LEASE: Maljamar 27 SWD
WELL NO.: 3

LOCATION: 225' FSL & 2185' FWL
ELEVATION: 3962'

Firm No.: TX 10193838 NM 4655451

Copyright 2014 - All Rights Reserved

NO.	REVISION	DATE
JOB NO.: LS140317		
DWG. NO.: 140317VM		

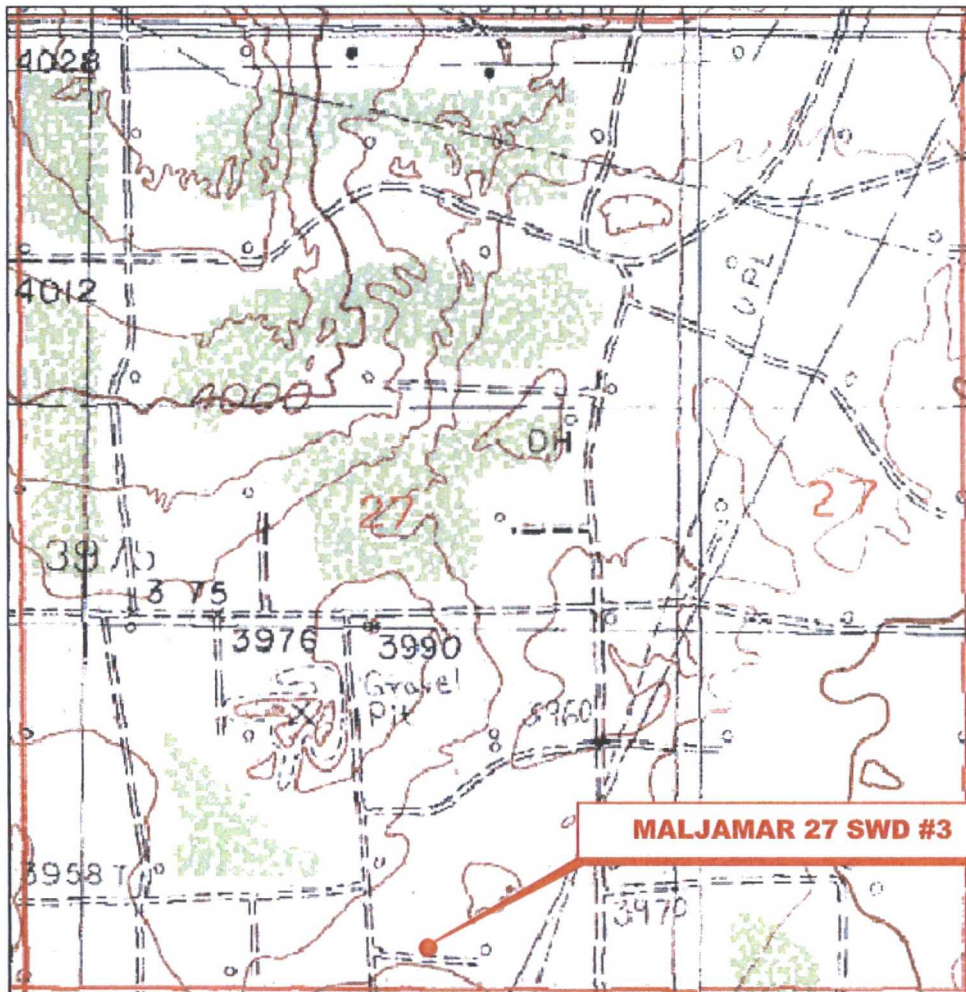
RRC

308 W. BROADWAY ST., HOBBS, NM 88240 (575) 964-8200

SCALE: 1" = 1000'
DATE: 7-31-2014
SURVEYED BY: GB/IE
DRAWN BY: LNY
APPROVED BY: RMH
SHEET : 1 OF 1

LOCATION VERIFICATION MAP

NOT TO SCALE



*SECTION 27, TWP. 17 SOUTH, RGE. 32 EAST,
N. M. P. M., LEA COUNTY, NEW MEXICO*

OPERATOR: COG Operating, LLC
LEASE: Maljamar 27 SWD
WELL NO.: 3
ELEVATION: 3962'

LOCATION: 225' FSL & 2185' FWL
CONTOUR INTERVAL: 10'
USGS TOPO. SOURCE MAP:
Maljamar, NM (P.E. 1985)

Firm No.: TX 10193838 NM 4655451

Copyright 2014 - All Rights Reserved

NO.	REVISION	DATE
JOB NO.: LS140317		
DWG. NO.: 140317LVM		

RRC

308 W. BROADWAY ST., HOBBS, NM 88240 (575) 964-8200

SCALE: NTS
DATE: 7-31-2014
SURVEYED BY: GB/IE
DRAWN BY: LNY
APPROVED BY: RMH
SHEET : 1 OF 1

17S 32E

21

22

23

28

27

26

1 MILE

Maljamar 27 SWD #3

SHL

Estimated Distance to Nearest Wellbore 386.6 ft W

33

34

35

4

3

2



SENM Shelf Area
Maljamar 27 SWD #3

SEC. 27, T17S - R32E SHL 225 FSL 2185 FWL, UNIT N

Author: ldm		Date: 28 May, 2015
	Scale:	Lm_RA_1MileRadiusWell_ Map.gmp