

DISTRICT I  
1825 N. FRENCH DR., HOBBS, NM 88240  
Phone: (575) 393-6181 Fax: (575) 393-0720

DISTRICT II  
811 S. FIRST ST., ARTESIA, NM 88210  
Phone: (575) 748-1283 Fax: (575) 748-9720

DISTRICT III  
1000 RIO BRAZOS RD., AZTEC, NM 87410  
Phone: (505) 334-6178 Fax: (505) 334-6170

DISTRICT IV  
1220 S. ST. FRANCIS DR., SANTA FE, NM 87505  
Phone: (505) 476-3480 Fax: (505) 476-3482

State of New Mexico  
Energy, Minerals & Natural Resources Department  
**OIL CONSERVATION DIVISION**  
1220 SOUTH ST. FRANCIS DR.  
Santa Fe, New Mexico 87505

HOBBS OGD  
JAN 13 2017  
RECEIVED

Form C-102  
Revised August 1, 2011  
Submit one copy to appropriate  
District Office

☐ AMENDED REPORT

**WELL LOCATION AND ACREAGE DEDICATION PLAT**

API Number 30-015-43878	Pool Code 41450	Pool Name Lusk; Bone Spring, North
Property Code 316703	Property Name SPRUCE GOOSE FEDERAL COM	Well Number 2H
OGRID No. 229137	Operator Name COG OPERATING, LLC	Elevation 3626.2'

**Surface Location**

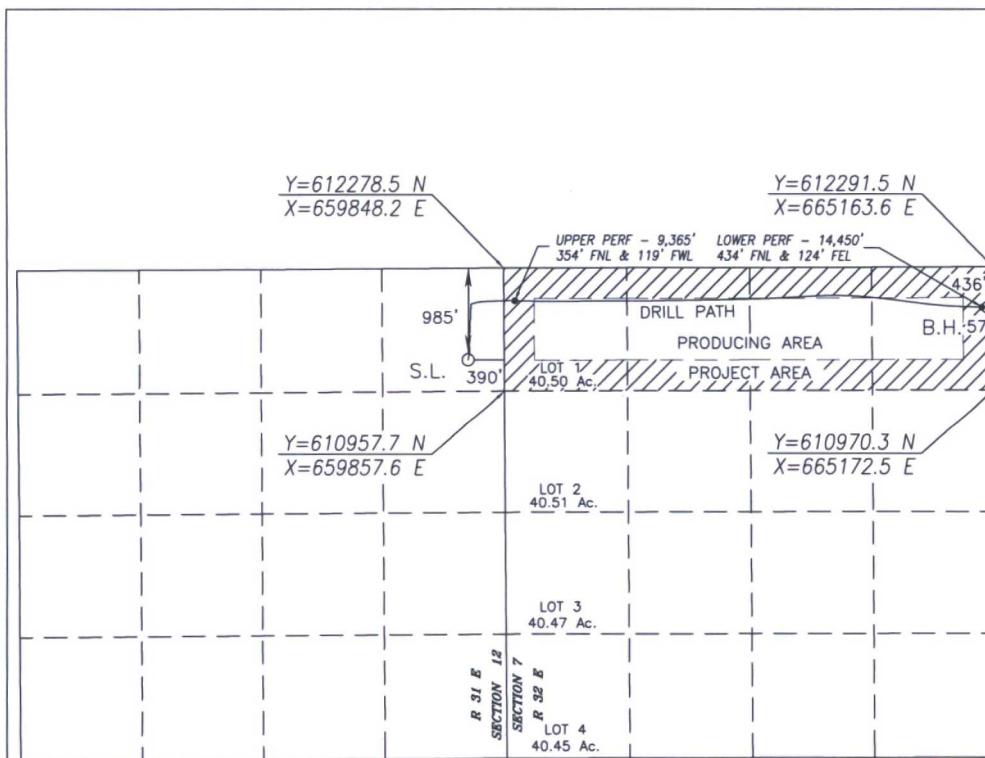
UL or lot No.	Section	Township	Range	Lot Idn	Feet from the	North/South line	Feet from the	East/West line	County
A	12	19-S	31-E		985	NORTH	390	EAST	EDDY

**Bottom Hole Location If Different From Surface**

UL or lot No.	Section	Township	Range	Lot Idn	Feet from the	North/South line	Feet from the	East/West line	County
A	7	19-S	32-E		436	NORTH	57	EAST	LEA

Dedicated Acres	Joint or Infill	Consolidation Code	Order No.
160.89			NSL-7461

NO ALLOWABLE WILL BE ASSIGNED TO THIS COMPLETION UNTIL ALL INTERESTS HAVE BEEN CONSOLIDATED  
OR A NON-STANDARD UNIT HAS BEEN APPROVED BY THE DIVISION



NAD 27 NME  
SURFACE LOCATION  
Y=611290.9 N  
X=659465.2 E  
LAT.=32.679468° N  
LONG.=103.815065° W

BOREPATH SHOWN HEREON IS BASED ON  
DIRECTIONAL SURVEY REPORT PROVIDED BY  
COG OPERATING, LLC FOR THE SPRUCE GOOSE  
FEDERAL COM #2H SUPPLIED TO HARCROW  
SURVEYING, LLC ON DECEMBER 20, 2016

NAD 27 NME  
BOTTOM  
HOLE LOCATION  
Y=611855.0 N  
X=665109.6 E  
LAT.=32.680941° N  
LONG.=103.796712° W

**OPERATOR CERTIFICATION**

I hereby certify that the information herein is true and complete to the best of my knowledge and belief, and that this organization either owns a working interest or unleased mineral interest in the land including the proposed bottom hole location or has a right to drill this well at this location pursuant to a contract with an owner of such mineral or working interest, or to a voluntary pooling agreement or a compulsory pooling order heretofore entered by the division.

Signature: *Stormi Davis* Date: 1/3/17

Printed Name: Stormi Davis  
E-mail Address: sdavis@concho.com

**SURVEYOR CERTIFICATION**

I hereby certify that the well location shown on this plat was plotted from field notes of actual surveys made by me or under my supervision, and that the same is true and correct to the best of my belief.

MAY 9, 2016/AUGUST 14, 2016  
Date of Survey/Date of Geographic Survey

Signature & Seal of Professional Surveyor



Certificate No. CHAD HARCROW 17777  
W.O. # 16-1107 DRAWN BY: CF