

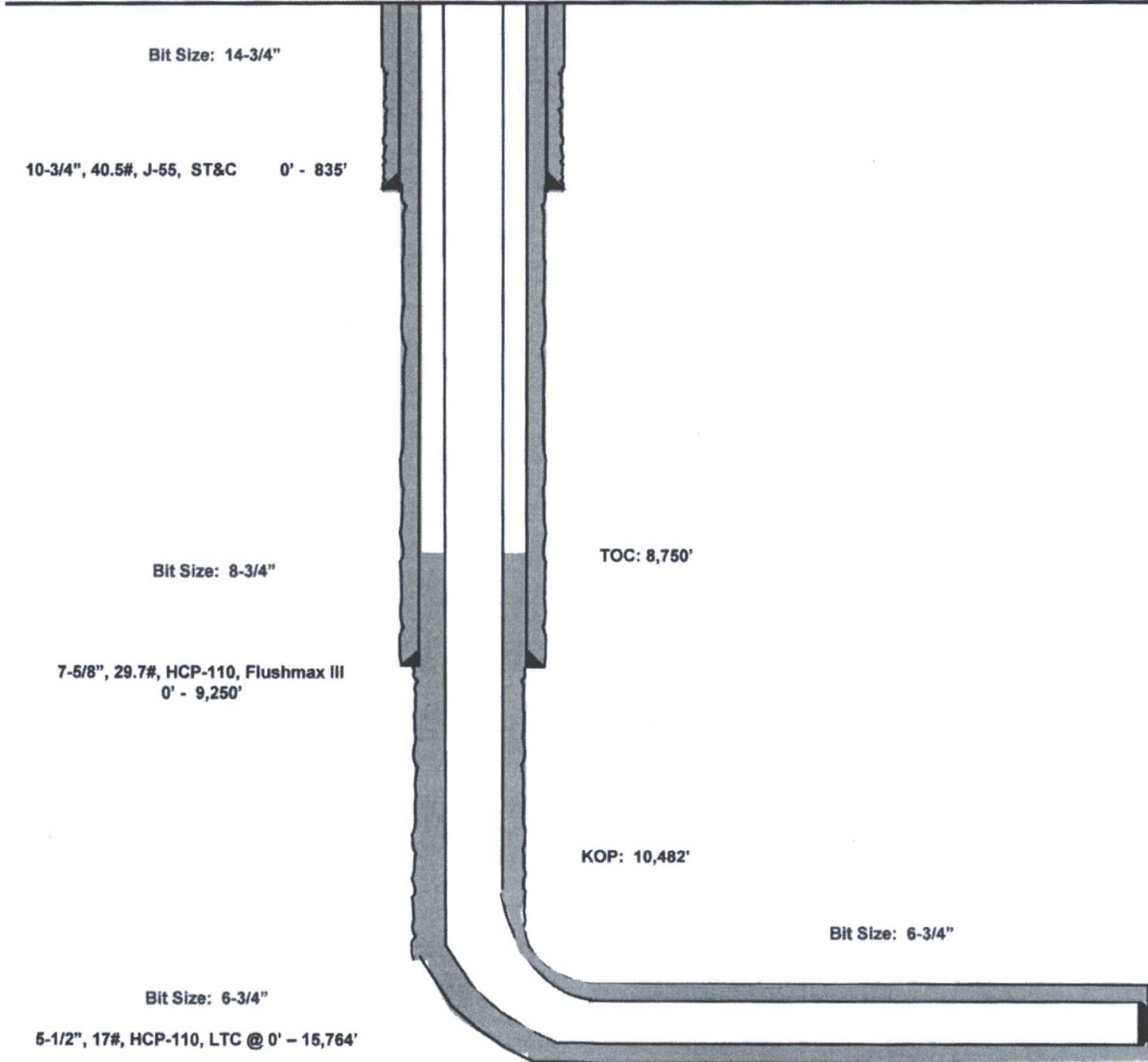
Ophelia 27 #503H

Lea County, New Mexico
Proposed Wellbore

2420' FNL
2100' FWL
Section 27
T-26-S, R-33-E

API: 30-025-42925-43496

KB: 3,291'
GL: 3,266'



Lateral: 15,764' MD, 10,970' TVD
BH Location: 2410' FSL & 2100' FWL
Section 22
T-26-S, R-33-E



Lea County, NM (NAD 27 NME)
 Ophella 27 #503H
 Plan #0.1

PROJECT DETAILS: Lea County, NM (NAD 27 NME)
 Geomatic System: US State Plane 1071 (EARTH STADIUM)
 Ellipsoid: Clarke 1866
 System Datum: Mean Sea Level

Adjust to Grid North
 True North: 4.41°
 Magnetic North: 4.67°
 Magnetic Field
 Strength: 0.784517
 Declination: 0.261483
 Date: 1/26/2017
 Model: NAD2011B

WELL DETAILS: #503H
 Ground Level: 3284.0
 NB = 27 @ 331.0' diam
 Elevation: 73500.0
 52° 0' 0" N
 197° 37' 51.33" W

SECTION DETAILS

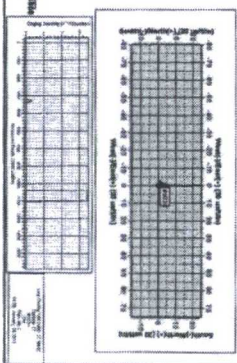
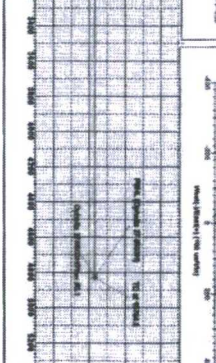
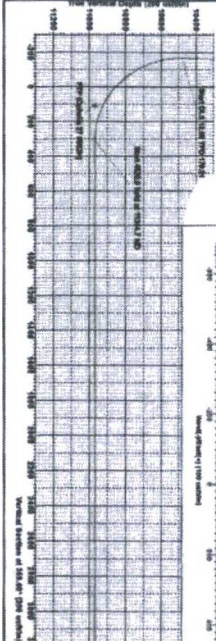
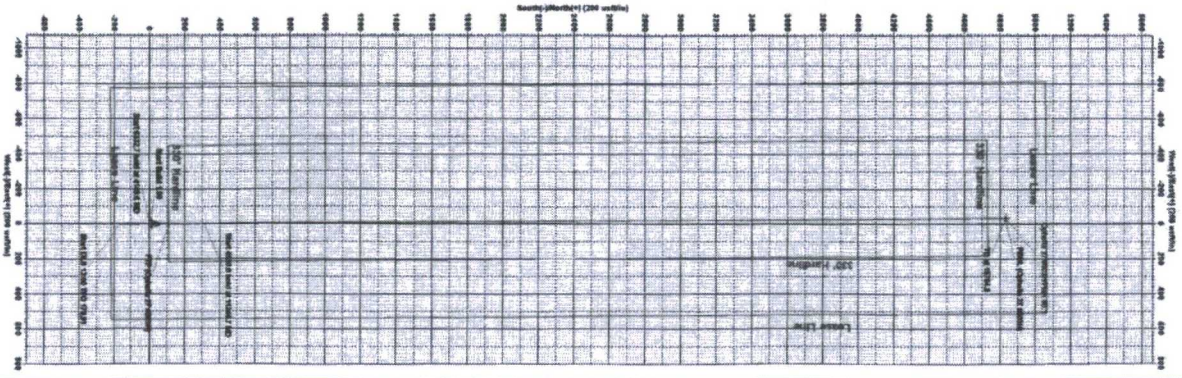
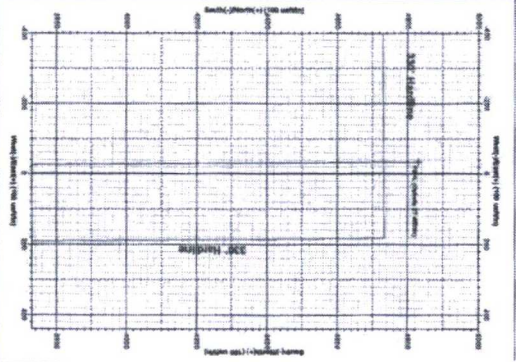
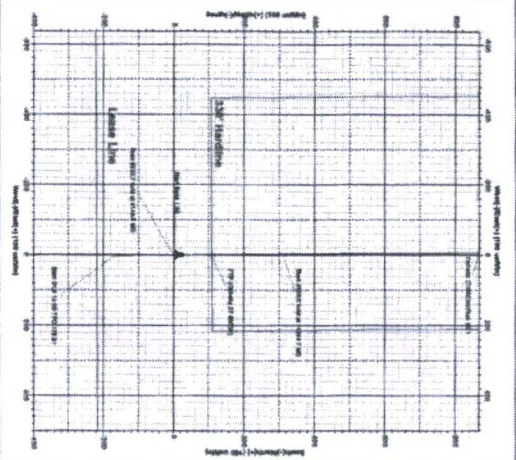
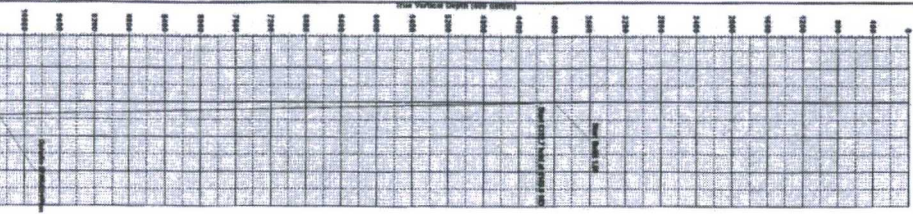
Sec	MD	Inc	Azi	TYD	+N/-S	+E/W	Dipg	Trace	Vsect	Target
1	0.0	0.00	0.00	0.0	0.0	0.0	0.00	0.00	0.0	
2	4000.0	0.00	0.00	4000.0	0.0	0.0	0.00	0.00	0.0	
3	4149.6	1.50	179.69	4149.6	-2.0	0.0	1.00	179.69	-2.0	
4	10482.2	1.50	179.69	10480.1	-167.2	0.9	0.00	0.00	-167.2	
5	11244.7	90.00	359.60	10970.0	310.1	-3.4	12.00	179.91	310.1	PHHL (Ophella 27 #503H)
6	15764.8	90.00	359.60	10970.0	4830.0	-34.0	0.00	0.00	4830.1	

CASINO DETAILS

No casing data is available

WELLBORE TARGET DETAILS (MAP CO-ORDINATES)

TYD	N/E/C	+E/W	Northing	Easting
10970.0	108.0	-1.0	37018.00	73825.00
10970.0	430.0	-3.0	37486.00	73802.00





EOG Resources - Midland

Lea County, NM (NAD 27 NME)

Ophelia 27

#503H

OH

Plan: Plan #0.1

Standard Planning Report

26 January, 2017



EOG Resources, Inc.
Planning Report

Database:	EDM 5000.1 Single User Db	Local Co-ordinate Reference:	Well #503H
Company:	EOG Resources - Midland	TVD Reference:	KB = 25' @ 3291.0usft
Project:	Lea County, NM (NAD 27 NME)	MD Reference:	KB = 25' @ 3291.0usft
Site:	Ophelia 27	North Reference:	Grid
Well:	#503H	Survey Calculation Method:	Minimum Curvature
Wellbore:	OH		
Design:	Plan #0.1		

Project	Lea County, NM (NAD 27 NME)		
Map System:	US State Plane 1927 (Exact solution)	System Datum:	Mean Sea Level
Geo Datum:	NAD 1927 (NADCON CONUS)		
Map Zone:	New Mexico East 3001		

Site	Ophelia 27				
Site Position:	Northing:	370,025.00 usft	Latitude:	32° 0' 53.711 N	
From: Map	Easting:	741,483.00 usft	Longitude:	103° 33' 15.217 W	
Position Uncertainty:	0.0 usft	Slot Radius:	13-3/16 "	Grid Convergence:	0.41 °

Well	#503H					
Well Position	+N/-S	-15.0 usft	Northing:	370,010.00 usft	Latitude:	32° 0' 53.723 N
	+E/-W	-2,247.0 usft	Easting:	739,236.00 usft	Longitude:	103° 33' 41.315 W
Position Uncertainty	0.0 usft	Wellhead Elevation:	0.0 usft	Ground Level:	3,266.0 usft	

Wellbore	OH				
Magnetics	Model Name	Sample Date	Declination (°)	Dip Angle (°)	Field Strength (nT)
	IGRF2015	1/26/2017	6.98	59.88	47,856

Design	Plan #0.1			
Audit Notes:				
Version:	Phase:	PLAN	Tie On Depth:	0.0
Vertical Section:	Depth From (TVD) (usft)	+N/-S (usft)	+E/-W (usft)	Direction (°)
	0.0	0.0	0.0	359.60

Plan Sections											
Measured Depth (usft)	Inclination (°)	Azimuth (°)	Vertical Depth (usft)	+N/-S (usft)	+E/-W (usft)	Dogleg Rate (°/100usft)	Build Rate (°/100usft)	Turn Rate (°/100usft)	TFO (°)	Target	
0.0	0.00	0.00	0.0	0.0	0.0	0.00	0.00	0.00	0.00		
4,000.0	0.00	0.00	4,000.0	0.0	0.0	0.00	0.00	0.00	0.00		
4,149.6	1.50	179.69	4,149.5	-2.0	0.0	1.00	1.00	0.00	179.69		
10,482.2	1.50	179.69	10,480.1	-167.2	0.9	0.00	0.00	0.00	0.00		
11,244.7	90.00	359.60	10,970.0	310.1	-2.4	12.00	11.61	23.60	179.91		
15,764.8	90.00	359.60	10,970.0	4,830.0	-34.0	0.00	0.00	0.00	0.00	PBHL (Ophelia 27 #503H)	



EOG Resources, Inc.
Planning Report

Database:	EDM 5000.1 Single User Db	Local Co-ordinate Reference:	Well #503H
Company:	EOG Resources - Midland	TVD Reference:	KB = 25' @ 3291.0usft
Project:	Lea County, NM (NAD 27 NME)	MD Reference:	KB = 25' @ 3291.0usft
Site:	Ophelia 27	North Reference:	Grid
Well:	#503H	Survey Calculation Method:	Minimum Curvature
Wellbore:	OH		
Design:	Plan #0.1		

Planned Survey									
Measured Depth (usft)	Inclination (°)	Azimuth (°)	Vertical Depth (usft)	+N/-S (usft)	+E/-W (usft)	Vertical Section (usft)	Dogleg Rate (°/100usft)	Bulld Rate (°/100usft)	Turn Rate (°/100usft)
0.0	0.00	0.00	0.0	0.0	0.0	0.0	0.00	0.00	0.00
100.0	0.00	0.00	100.0	0.0	0.0	0.0	0.00	0.00	0.00
200.0	0.00	0.00	200.0	0.0	0.0	0.0	0.00	0.00	0.00
300.0	0.00	0.00	300.0	0.0	0.0	0.0	0.00	0.00	0.00
400.0	0.00	0.00	400.0	0.0	0.0	0.0	0.00	0.00	0.00
500.0	0.00	0.00	500.0	0.0	0.0	0.0	0.00	0.00	0.00
600.0	0.00	0.00	600.0	0.0	0.0	0.0	0.00	0.00	0.00
700.0	0.00	0.00	700.0	0.0	0.0	0.0	0.00	0.00	0.00
800.0	0.00	0.00	800.0	0.0	0.0	0.0	0.00	0.00	0.00
900.0	0.00	0.00	900.0	0.0	0.0	0.0	0.00	0.00	0.00
1,000.0	0.00	0.00	1,000.0	0.0	0.0	0.0	0.00	0.00	0.00
1,100.0	0.00	0.00	1,100.0	0.0	0.0	0.0	0.00	0.00	0.00
1,200.0	0.00	0.00	1,200.0	0.0	0.0	0.0	0.00	0.00	0.00
1,300.0	0.00	0.00	1,300.0	0.0	0.0	0.0	0.00	0.00	0.00
1,400.0	0.00	0.00	1,400.0	0.0	0.0	0.0	0.00	0.00	0.00
1,500.0	0.00	0.00	1,500.0	0.0	0.0	0.0	0.00	0.00	0.00
1,600.0	0.00	0.00	1,600.0	0.0	0.0	0.0	0.00	0.00	0.00
1,700.0	0.00	0.00	1,700.0	0.0	0.0	0.0	0.00	0.00	0.00
1,800.0	0.00	0.00	1,800.0	0.0	0.0	0.0	0.00	0.00	0.00
1,900.0	0.00	0.00	1,900.0	0.0	0.0	0.0	0.00	0.00	0.00
2,000.0	0.00	0.00	2,000.0	0.0	0.0	0.0	0.00	0.00	0.00
2,100.0	0.00	0.00	2,100.0	0.0	0.0	0.0	0.00	0.00	0.00
2,200.0	0.00	0.00	2,200.0	0.0	0.0	0.0	0.00	0.00	0.00
2,300.0	0.00	0.00	2,300.0	0.0	0.0	0.0	0.00	0.00	0.00
2,400.0	0.00	0.00	2,400.0	0.0	0.0	0.0	0.00	0.00	0.00
2,500.0	0.00	0.00	2,500.0	0.0	0.0	0.0	0.00	0.00	0.00
2,600.0	0.00	0.00	2,600.0	0.0	0.0	0.0	0.00	0.00	0.00
2,700.0	0.00	0.00	2,700.0	0.0	0.0	0.0	0.00	0.00	0.00
2,800.0	0.00	0.00	2,800.0	0.0	0.0	0.0	0.00	0.00	0.00
2,900.0	0.00	0.00	2,900.0	0.0	0.0	0.0	0.00	0.00	0.00
3,000.0	0.00	0.00	3,000.0	0.0	0.0	0.0	0.00	0.00	0.00
3,100.0	0.00	0.00	3,100.0	0.0	0.0	0.0	0.00	0.00	0.00
3,200.0	0.00	0.00	3,200.0	0.0	0.0	0.0	0.00	0.00	0.00
3,300.0	0.00	0.00	3,300.0	0.0	0.0	0.0	0.00	0.00	0.00
3,400.0	0.00	0.00	3,400.0	0.0	0.0	0.0	0.00	0.00	0.00
3,500.0	0.00	0.00	3,500.0	0.0	0.0	0.0	0.00	0.00	0.00
3,600.0	0.00	0.00	3,600.0	0.0	0.0	0.0	0.00	0.00	0.00
3,700.0	0.00	0.00	3,700.0	0.0	0.0	0.0	0.00	0.00	0.00
3,800.0	0.00	0.00	3,800.0	0.0	0.0	0.0	0.00	0.00	0.00
3,900.0	0.00	0.00	3,900.0	0.0	0.0	0.0	0.00	0.00	0.00
4,000.0	0.00	0.00	4,000.0	0.0	0.0	0.0	0.00	0.00	0.00
4,100.0	1.00	179.69	4,100.0	-0.9	0.0	-0.9	1.00	1.00	0.00
4,149.6	1.50	179.69	4,149.5	-2.0	0.0	-2.0	1.00	1.00	0.00
4,200.0	1.50	179.69	4,200.0	-3.3	0.0	-3.3	0.00	0.00	0.00
4,300.0	1.50	179.69	4,299.9	-5.9	0.0	-5.9	0.00	0.00	0.00
4,400.0	1.50	179.69	4,399.9	-8.5	0.0	-8.5	0.00	0.00	0.00
4,500.0	1.50	179.69	4,499.9	-11.1	0.1	-11.1	0.00	0.00	0.00
4,600.0	1.50	179.69	4,599.8	-13.7	0.1	-13.7	0.00	0.00	0.00
4,700.0	1.50	179.69	4,699.8	-16.3	0.1	-16.3	0.00	0.00	0.00
4,800.0	1.50	179.69	4,799.8	-18.9	0.1	-18.9	0.00	0.00	0.00
4,900.0	1.50	179.69	4,899.7	-21.5	0.1	-21.5	0.00	0.00	0.00
5,000.0	1.50	179.69	4,999.7	-24.1	0.1	-24.1	0.00	0.00	0.00
5,100.0	1.50	179.69	5,099.7	-26.8	0.1	-26.8	0.00	0.00	0.00
5,200.0	1.50	179.69	5,199.6	-29.4	0.2	-29.4	0.00	0.00	0.00



EOG Resources, Inc.
Planning Report

Database:	EDM 5000.1 Single User Db	Local Co-ordinate Reference:	Well #503H
Company:	EOG Resources - Midland	TVD Reference:	KB = 25' @ 3291.0usft
Project:	Lea County, NM (NAD 27 NME)	MD Reference:	KB = 25' @ 3291.0usft
Site:	Ophelia 27	North Reference:	Grid
Well:	#503H	Survey Calculation Method:	Minimum Curvature
Wellbore:	OH		
Design:	Plan #0.1		

Planned Survey

Measured Depth (usft)	Inclination (°)	Azimuth (°)	Vertical Depth (usft)	+N/-S (usft)	+E/-W (usft)	Vertical Section (usft)	Dogleg Rate (°/100usft)	Build Rate (°/100usft)	Turn Rate (°/100usft)
5,300.0	1.50	179.69	5,299.6	-32.0	0.2	-32.0	0.00	0.00	0.00
5,400.0	1.50	179.69	5,399.6	-34.6	0.2	-34.6	0.00	0.00	0.00
5,500.0	1.50	179.69	5,499.5	-37.2	0.2	-37.2	0.00	0.00	0.00
5,600.0	1.50	179.69	5,599.5	-39.8	0.2	-39.8	0.00	0.00	0.00
5,700.0	1.50	179.69	5,699.5	-42.4	0.2	-42.4	0.00	0.00	0.00
5,800.0	1.50	179.69	5,799.4	-45.0	0.2	-45.0	0.00	0.00	0.00
5,900.0	1.50	179.69	5,899.4	-47.6	0.3	-47.6	0.00	0.00	0.00
6,000.0	1.50	179.69	5,999.4	-50.2	0.3	-50.2	0.00	0.00	0.00
6,100.0	1.50	179.69	6,099.3	-52.9	0.3	-52.9	0.00	0.00	0.00
6,200.0	1.50	179.69	6,199.3	-55.5	0.3	-55.5	0.00	0.00	0.00
6,300.0	1.50	179.69	6,299.3	-58.1	0.3	-58.1	0.00	0.00	0.00
6,400.0	1.50	179.69	6,399.2	-60.7	0.3	-60.7	0.00	0.00	0.00
6,500.0	1.50	179.69	6,499.2	-63.3	0.3	-63.3	0.00	0.00	0.00
6,600.0	1.50	179.69	6,599.1	-65.9	0.4	-65.9	0.00	0.00	0.00
6,700.0	1.50	179.69	6,699.1	-68.5	0.4	-68.5	0.00	0.00	0.00
6,800.0	1.50	179.69	6,799.1	-71.1	0.4	-71.1	0.00	0.00	0.00
6,900.0	1.50	179.69	6,899.0	-73.7	0.4	-73.7	0.00	0.00	0.00
7,000.0	1.50	179.69	6,999.0	-76.3	0.4	-76.3	0.00	0.00	0.00
7,100.0	1.50	179.69	7,099.0	-79.0	0.4	-79.0	0.00	0.00	0.00
7,200.0	1.50	179.69	7,198.9	-81.6	0.4	-81.6	0.00	0.00	0.00
7,300.0	1.50	179.69	7,298.9	-84.2	0.5	-84.2	0.00	0.00	0.00
7,400.0	1.50	179.69	7,398.9	-86.8	0.5	-86.8	0.00	0.00	0.00
7,500.0	1.50	179.69	7,498.8	-89.4	0.5	-89.4	0.00	0.00	0.00
7,600.0	1.50	179.69	7,598.8	-92.0	0.5	-92.0	0.00	0.00	0.00
7,700.0	1.50	179.69	7,698.8	-94.6	0.5	-94.6	0.00	0.00	0.00
7,800.0	1.50	179.69	7,798.7	-97.2	0.5	-97.2	0.00	0.00	0.00
7,900.0	1.50	179.69	7,898.7	-99.8	0.5	-99.8	0.00	0.00	0.00
8,000.0	1.50	179.69	7,998.7	-102.4	0.6	-102.4	0.00	0.00	0.00
8,100.0	1.50	179.69	8,098.6	-105.1	0.6	-105.1	0.00	0.00	0.00
8,200.0	1.50	179.69	8,198.6	-107.7	0.6	-107.7	0.00	0.00	0.00
8,300.0	1.50	179.69	8,298.6	-110.3	0.6	-110.3	0.00	0.00	0.00
8,400.0	1.50	179.69	8,398.5	-112.9	0.6	-112.9	0.00	0.00	0.00
8,500.0	1.50	179.69	8,498.5	-115.5	0.6	-115.5	0.00	0.00	0.00
8,600.0	1.50	179.69	8,598.5	-118.1	0.6	-118.1	0.00	0.00	0.00
8,700.0	1.50	179.69	8,698.4	-120.7	0.7	-120.7	0.00	0.00	0.00
8,800.0	1.50	179.69	8,798.4	-123.3	0.7	-123.3	0.00	0.00	0.00
8,900.0	1.50	179.69	8,898.4	-125.9	0.7	-125.9	0.00	0.00	0.00
9,000.0	1.50	179.69	8,998.3	-128.5	0.7	-128.5	0.00	0.00	0.00
9,100.0	1.50	179.69	9,098.3	-131.1	0.7	-131.2	0.00	0.00	0.00
9,200.0	1.50	179.69	9,198.3	-133.8	0.7	-133.8	0.00	0.00	0.00
9,300.0	1.50	179.69	9,298.2	-136.4	0.7	-136.4	0.00	0.00	0.00
9,400.0	1.50	179.69	9,398.2	-139.0	0.8	-139.0	0.00	0.00	0.00
9,500.0	1.50	179.69	9,498.2	-141.6	0.8	-141.6	0.00	0.00	0.00
9,600.0	1.50	179.69	9,598.1	-144.2	0.8	-144.2	0.00	0.00	0.00
9,700.0	1.50	179.69	9,698.1	-146.8	0.8	-146.8	0.00	0.00	0.00
9,800.0	1.50	179.69	9,798.1	-149.4	0.8	-149.4	0.00	0.00	0.00
9,900.0	1.50	179.69	9,898.0	-152.0	0.8	-152.0	0.00	0.00	0.00
10,000.0	1.50	179.69	9,998.0	-154.6	0.8	-154.6	0.00	0.00	0.00
10,100.0	1.50	179.69	10,098.0	-157.2	0.9	-157.2	0.00	0.00	0.00
10,200.0	1.50	179.69	10,197.9	-159.9	0.9	-159.9	0.00	0.00	0.00
10,300.0	1.50	179.69	10,297.9	-162.5	0.9	-162.5	0.00	0.00	0.00
10,400.0	1.50	179.69	10,397.9	-165.1	0.9	-165.1	0.00	0.00	0.00
10,482.2	1.50	179.69	10,480.1	-167.2	0.9	-167.2	0.00	0.00	0.00
10,500.0	0.63	359.39	10,497.8	-167.4	0.9	-167.4	12.00	-4.85	1,012.29



EOG Resources, Inc.
Planning Report

Database:	EDM 5000.1 Single User Db	Local Co-ordinate Reference:	Well #503H
Company:	EOG Resources - Midland	TVD Reference:	KB = 25' @ 3291.0usft
Project:	Lea County, NM (NAD 27 NME)	MD Reference:	KB = 25' @ 3291.0usft
Site:	Ophelia 27	North Reference:	Grid
Well:	#503H	Survey Calculation Method:	Minimum Curvature
Wellbore:	OH		
Design:	Plan #0.1		

Planned Survey

Measured Depth (usft)	Inclination (°)	Azimuth (°)	Vertical Depth (usft)	+N/-S (usft)	+E/-W (usft)	Vertical Section (usft)	Dogleg Rate (°/100usft)	Build Rate (°/100usft)	Turn Rate (°/100usft)
10,525.0	3.63	359.56	10,522.8	-166.4	0.9	-166.4	12.00	12.00	0.89
10,550.0	6.63	359.58	10,547.7	-164.2	0.9	-164.2	12.00	12.00	0.07
10,575.0	9.63	359.59	10,572.4	-160.7	0.9	-160.7	12.00	12.00	0.03
10,600.0	12.63	359.59	10,597.0	-155.8	0.8	-155.8	12.00	12.00	0.01
10,625.0	15.63	359.59	10,621.2	-149.7	0.8	-149.7	12.00	12.00	0.01
10,650.0	18.63	359.59	10,645.1	-142.4	0.7	-142.4	12.00	12.00	0.01
10,675.0	21.63	359.59	10,668.6	-133.8	0.7	-133.8	12.00	12.00	0.00
10,700.0	24.63	359.59	10,691.6	-123.9	0.6	-123.9	12.00	12.00	0.00
10,725.0	27.63	359.60	10,714.0	-112.9	0.5	-112.9	12.00	12.00	0.00
10,750.0	30.63	359.60	10,735.8	-100.7	0.4	-100.8	12.00	12.00	0.00
10,775.0	33.63	359.60	10,757.0	-87.5	0.3	-87.5	12.00	12.00	0.00
10,800.0	36.63	359.60	10,777.4	-73.1	0.2	-73.1	12.00	12.00	0.00
10,825.0	39.63	359.60	10,797.1	-57.6	0.1	-57.6	12.00	12.00	0.00
10,850.0	42.63	359.60	10,815.9	-41.2	0.0	-41.2	12.00	12.00	0.00
10,875.0	45.63	359.60	10,833.9	-23.8	-0.1	-23.8	12.00	12.00	0.00
10,900.0	48.63	359.60	10,850.9	-5.5	-0.2	-5.5	12.00	12.00	0.00
10,925.0	51.63	359.60	10,866.9	13.7	-0.4	13.7	12.00	12.00	0.00
10,950.0	54.63	359.60	10,881.9	33.7	-0.5	33.7	12.00	12.00	0.00
10,975.0	57.63	359.60	10,895.8	54.5	-0.7	54.5	12.00	12.00	0.00
11,000.0	60.63	359.60	10,908.7	75.9	-0.8	75.9	12.00	12.00	0.00
11,025.0	63.63	359.60	10,920.3	98.0	-1.0	98.0	12.00	12.00	0.00
11,050.0	66.63	359.60	10,930.8	120.7	-1.1	120.7	12.00	12.00	0.00
11,053.7	67.08	359.60	10,932.3	124.1	-1.1	124.1	12.00	12.00	0.00
FTP (Ophelia 27 #503H)									
11,075.0	69.63	359.60	10,940.2	143.9	-1.3	143.9	12.00	12.00	0.00
11,100.0	72.63	359.60	10,948.2	167.6	-1.4	167.6	12.00	12.00	0.00
11,125.0	75.63	359.60	10,955.1	191.6	-1.6	191.6	12.00	12.00	0.00
11,150.0	78.63	359.60	10,960.6	216.0	-1.8	216.0	12.00	12.00	0.00
11,175.0	81.63	359.60	10,964.9	240.6	-2.0	240.6	12.00	12.00	0.00
11,200.0	84.63	359.60	10,967.9	265.4	-2.1	265.4	12.00	12.00	0.00
11,225.0	87.63	359.60	10,969.6	290.4	-2.3	290.4	12.00	12.00	0.00
11,244.7	90.00	359.60	10,970.0	310.1	-2.4	310.1	12.00	12.00	0.00
11,300.0	90.00	359.60	10,970.0	365.4	-2.8	365.4	0.00	0.00	0.00
11,400.0	90.00	359.60	10,970.0	465.4	-3.5	465.4	0.00	0.00	0.00
11,500.0	90.00	359.60	10,970.0	565.3	-4.2	565.4	0.00	0.00	0.00
11,600.0	90.00	359.60	10,970.0	665.3	-4.9	665.4	0.00	0.00	0.00
11,700.0	90.00	359.60	10,970.0	765.3	-5.6	765.4	0.00	0.00	0.00
11,800.0	90.00	359.60	10,970.0	865.3	-6.3	865.4	0.00	0.00	0.00
11,900.0	90.00	359.60	10,970.0	965.3	-7.0	965.4	0.00	0.00	0.00
12,000.0	90.00	359.60	10,970.0	1,065.3	-7.7	1,065.4	0.00	0.00	0.00
12,100.0	90.00	359.60	10,970.0	1,165.3	-8.4	1,165.4	0.00	0.00	0.00
12,200.0	90.00	359.60	10,970.0	1,265.3	-9.1	1,265.4	0.00	0.00	0.00
12,300.0	90.00	359.60	10,970.0	1,365.3	-9.8	1,365.4	0.00	0.00	0.00
12,400.0	90.00	359.60	10,970.0	1,465.3	-10.5	1,465.4	0.00	0.00	0.00
12,500.0	90.00	359.60	10,970.0	1,565.3	-11.2	1,565.4	0.00	0.00	0.00
12,600.0	90.00	359.60	10,970.0	1,665.3	-11.9	1,665.4	0.00	0.00	0.00
12,700.0	90.00	359.60	10,970.0	1,765.3	-12.6	1,765.4	0.00	0.00	0.00
12,800.0	90.00	359.60	10,970.0	1,865.3	-13.3	1,865.4	0.00	0.00	0.00
12,900.0	90.00	359.60	10,970.0	1,965.3	-14.0	1,965.4	0.00	0.00	0.00
13,000.0	90.00	359.60	10,970.0	2,065.3	-14.7	2,065.4	0.00	0.00	0.00
13,100.0	90.00	359.60	10,970.0	2,165.3	-15.4	2,165.4	0.00	0.00	0.00
13,200.0	90.00	359.60	10,970.0	2,265.3	-16.1	2,265.4	0.00	0.00	0.00
13,300.0	90.00	359.60	10,970.0	2,365.3	-16.8	2,365.4	0.00	0.00	0.00



EOG Resources, Inc.
Planning Report

Database:	EDM 5000.1 Single User Db	Local Co-ordinate Reference:	Well #503H
Company:	EOG Resources - Midland	TVD Reference:	KB = 25' @ 3291.0usft
Project:	Lea County, NM (NAD 27 NME)	MD Reference:	KB = 25' @ 3291.0usft
Site:	Ophelia 27	North Reference:	Grid
Well:	#503H	Survey Calculation Method:	Minimum Curvature
Wellbore:	OH		
Design:	Plan #0.1		

Planned Survey										
Measured Depth (usft)	Inclination (°)	Azimuth (°)	Vertical Depth (usft)	+N/-S (usft)	+E/-W (usft)	Vertical Section (usft)	Dogleg Rate (°/100usft)	Build Rate (°/100usft)	Turn Rate (°/100usft)	
13,400.0	90.00	359.60	10,970.0	2,465.3	-17.5	2,465.4	0.00	0.00	0.00	
13,500.0	90.00	359.60	10,970.0	2,565.3	-18.2	2,565.4	0.00	0.00	0.00	
13,600.0	90.00	359.60	10,970.0	2,665.3	-18.9	2,665.4	0.00	0.00	0.00	
13,700.0	90.00	359.60	10,970.0	2,765.3	-19.6	2,765.4	0.00	0.00	0.00	
13,800.0	90.00	359.60	10,970.0	2,865.3	-20.3	2,865.4	0.00	0.00	0.00	
13,900.0	90.00	359.60	10,970.0	2,965.3	-21.0	2,965.4	0.00	0.00	0.00	
14,000.0	90.00	359.60	10,970.0	3,065.3	-21.7	3,065.4	0.00	0.00	0.00	
14,100.0	90.00	359.60	10,970.0	3,165.3	-22.4	3,165.4	0.00	0.00	0.00	
14,200.0	90.00	359.60	10,970.0	3,265.3	-23.1	3,265.4	0.00	0.00	0.00	
14,300.0	90.00	359.60	10,970.0	3,365.3	-23.8	3,365.4	0.00	0.00	0.00	
14,400.0	90.00	359.60	10,970.0	3,465.3	-24.5	3,465.4	0.00	0.00	0.00	
14,500.0	90.00	359.60	10,970.0	3,565.3	-25.2	3,565.4	0.00	0.00	0.00	
14,600.0	90.00	359.60	10,970.0	3,665.3	-25.9	3,665.4	0.00	0.00	0.00	
14,700.0	90.00	359.60	10,970.0	3,765.3	-26.6	3,765.4	0.00	0.00	0.00	
14,800.0	90.00	359.60	10,970.0	3,865.3	-27.3	3,865.4	0.00	0.00	0.00	
14,900.0	90.00	359.60	10,970.0	3,965.3	-28.0	3,965.4	0.00	0.00	0.00	
15,000.0	90.00	359.60	10,970.0	4,065.3	-28.7	4,065.4	0.00	0.00	0.00	
15,100.0	90.00	359.60	10,970.0	4,165.3	-29.4	4,165.4	0.00	0.00	0.00	
15,200.0	90.00	359.60	10,970.0	4,265.3	-30.1	4,265.4	0.00	0.00	0.00	
15,300.0	90.00	359.60	10,970.0	4,365.3	-30.8	4,365.4	0.00	0.00	0.00	
15,400.0	90.00	359.60	10,970.0	4,465.3	-31.5	4,465.4	0.00	0.00	0.00	
15,500.0	90.00	359.60	10,970.0	4,565.3	-32.2	4,565.4	0.00	0.00	0.00	
15,600.0	90.00	359.60	10,970.0	4,665.2	-32.8	4,665.4	0.00	0.00	0.00	
15,700.0	90.00	359.60	10,970.0	4,765.2	-33.5	4,765.4	0.00	0.00	0.00	
15,764.8	90.00	359.60	10,970.0	4,830.0	-34.0	4,830.1	0.00	0.00	0.00	
PBHL (Ophelia 27 #503H)										

Design Targets										
Target Name	Dip Angle (°)	Dip Dir. (°)	TVD (usft)	+N/-S (usft)	+E/-W (usft)	Northing (usft)	Easting (usft)	Latitude	Longitude	
PBHL (Ophelia 27 #503H)	0.00	0.00	10,970.0	4,830.0	-34.0	374,840.00	739,202.00	32° 1' 41.522 N	103° 33' 41.309 W	
- hit/miss target										
- Shape										
- Point										
FTP (Ophelia 27 #503H)	0.00	0.00	10,970.0	109.0	-1.0	370,119.00	739,235.00	32° 0' 54.801 N	103° 33' 41.317 W	
- plan misses target center by 40.6usft at 11053.7usft MD (10932.3 TVD, 124.1 N, -1.1 E)										
- Point										