

### AMENDED REPORT

## WELL LOCATION AND ACREAGE DEDICATION PLAT

<sup>1</sup> API Number 30-025-42925 <b>4349A</b>	<sup>2</sup> Pool Code 7280	<sup>3</sup> Pool Name Bradley; Bone Spring
<sup>4</sup> Property Code 39814	<sup>5</sup> Property Name OPHELIA 27	<sup>6</sup> Well Number #503H
<sup>7</sup> OGRID No. 7377	<sup>8</sup> Operator Name EOG RESOURCES, INC.	<sup>9</sup> Elevation 3266'

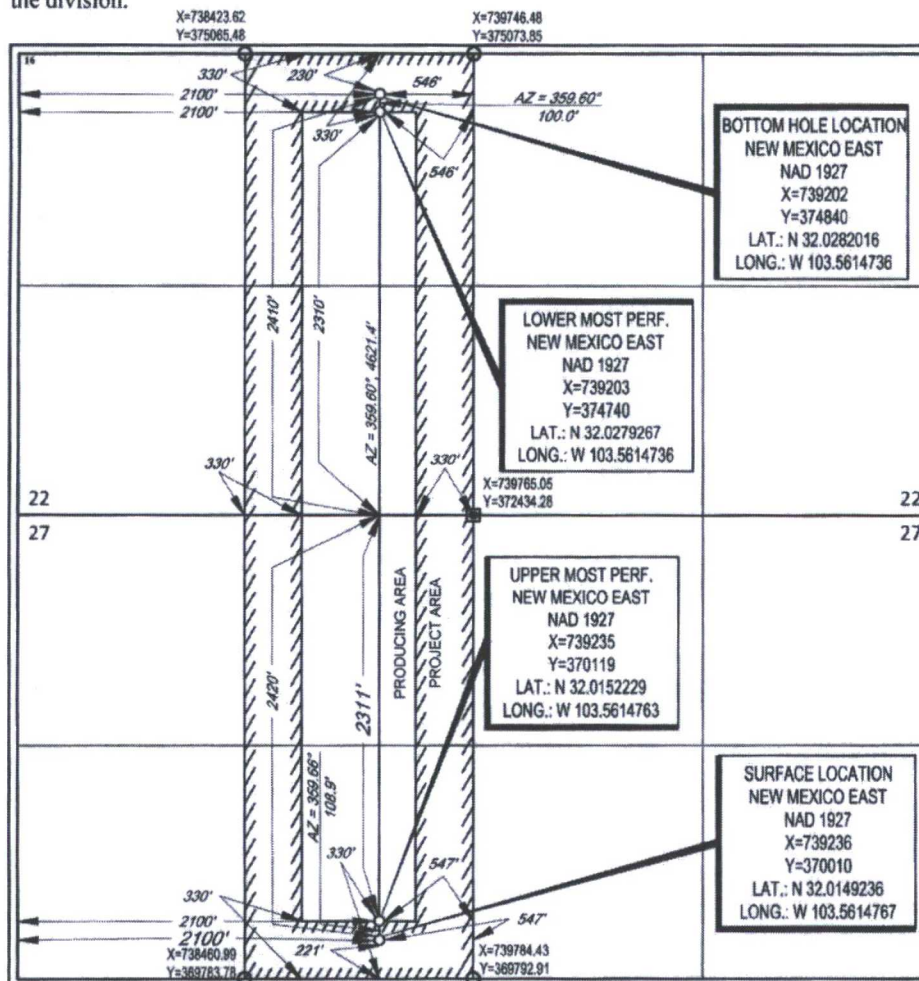
### <sup>10</sup>Surface Location

UL or lot no.	Section	Township	Range	Lot Idn	Feet from the	North/South line	Feet from the	East/West line	County
F	27	26-S	33-E	-	2420	NORTH	2100'	WEST	LEA

UL or lot no.	Section	Township	Range	Lot Idn	Feet from the	North/South line	Feet from the	East/West line	County
K	22	26-S	33-E	-	2410'	SOUTH	2100'	WEST	LEA

<sup>12</sup> Dedicated Acres <b>160.00</b>	<sup>13</sup> Joint or Infill	<sup>14</sup> Consolidation Code	<sup>15</sup> Order No.
--	-------------------------------	----------------------------------	-------------------------

No allowable will be assigned to this completion until all interests have been consolidated or a non-standard unit has been approved by the division.



## 17 OPERATOR CERTIFICATION

I hereby certify that the information contained herein is true and complete to the best of my knowledge and belief, and that this organization either owns a working interest or unleased mineral interest in the land including the proposed bottom hole location or has a right to drill this well at this location pursuant to a contract with an owner of such a mineral or working interest, or to a voluntary pooling agreement or a compulsory pooling order heretofore entered by the division.

Signature Alan Wagner Date 1/30/17

Stan Wagner  
Printed Name

E-mail Address

## 18 SURVEYOR CERTIFICATION

I hereby certify that the well location shown on this plat was plotted from field notes of actual surveys made by me or under my supervision, and that the same is true to the best of my belief.

02-22-2018  
Date of Survey  
Signature and Seal of Registered Surveyor  
MICHAEL BROWN  
NEW MEXICO  
18329  
PROFESSIONAL SURVEYOR  
Certificate Number

**Certificate Number**