

District I  
1625 N. French Dr., Hobbs, NM 88240  
Phone: (575) 393-6161 Fax: (575) 393-0720  
District II  
811 S. First St., Artesia, NM 88210  
Phone: (575) 748-1283 Fax: (575) 748-9720  
District III  
1000 Rio Brazos Road, Aztec, NM 87410  
Phone: (505) 334-6178 Fax: (505) 334-6170  
District IV  
1220 S. St. Francis Dr., Santa Fe, NM 87505  
Phone: (505) 476-3460 Fax: (505) 476-3462

State of New Mexico  
Energy, Minerals & Natural Resources Department  
OIL CONSERVATION DIVISION  
1220 South St. Francis Dr.  
Santa Fe, NM 87505

Form C-102  
Revised August 1, 2011  
Submit one copy to appropriate  
District Office

☐ AMENDED REPORT

WELL LOCATION AND ACREAGE DEDICATION PLAT

<sup>1</sup> API Number <b>30-025-43563</b>	<sup>2</sup> Pool Code <b>59900</b>	<sup>3</sup> Pool Name <b>Triple X; Bone Spring</b>
<sup>4</sup> Property Code <b>30884</b>	<sup>5</sup> Property Name <b>THISTLE UNIT</b>	<sup>6</sup> Well Number <b>102H</b>
<sup>7</sup> OGRID No. <b>6137</b>	<sup>8</sup> Operator Name <b>DEVON ENERGY PRODUCTION COMPANY, L.P.</b>	<sup>9</sup> Elevation <b>3640.3</b>

<sup>10</sup> Surface Location

UL or lot no.	Section	Township	Range	Lot Idn	Feet from the	North/South line	Feet from the	East/West line	County
<b>P</b>	<b>34</b>	<b>23 S</b>	<b>33 E</b>		<b>215</b>	<b>SOUTH</b>	<b>400</b>	<b>EAST</b>	<b>LEA</b>

<sup>11</sup> Bottom Hole Location If Different From Surface

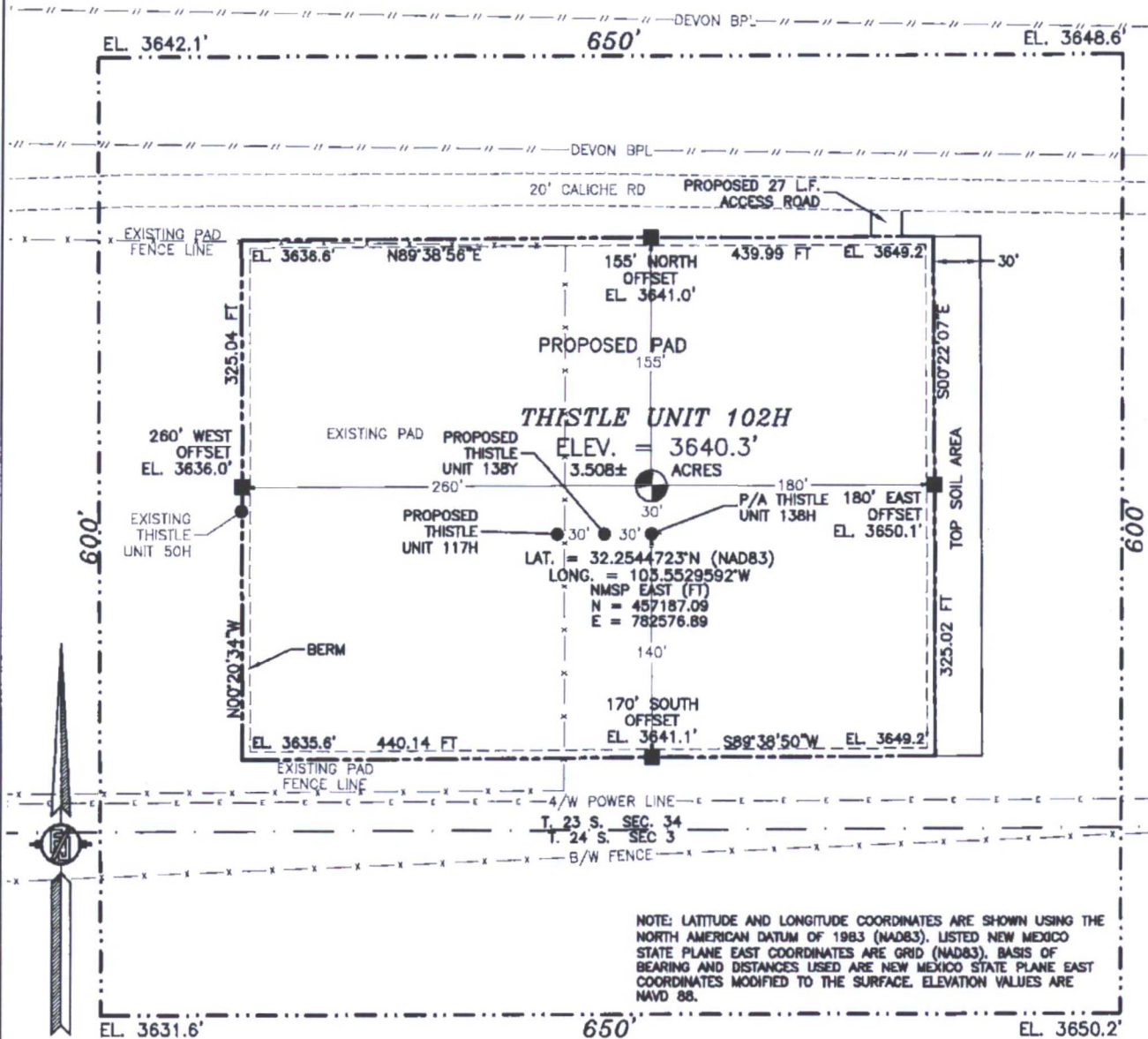
UL or lot no.	Section	Township	Range	Lot Idn	Feet from the	North/South line	Feet from the	East/West line	County
<b>A</b>	<b>22</b>	<b>23 S</b>	<b>33 E</b>		<b>330</b>	<b>NORTH</b>	<b>380</b>	<b>EAST</b>	<b>LEA</b>

<sup>12</sup> Dedicated Acres <b>480</b>	<sup>13</sup> Joint or Infill	<sup>14</sup> Consolidation Code	<sup>15</sup> Order No.
---	-------------------------------	----------------------------------	-------------------------

No allowable will be assigned to this completion until all interests have been consolidated or a non-standard unit has been approved by the division.

<p>NW CORNER SEC. 22 LAT. = 32.2974757N LONG. = 103.5687592W NMSP EAST (FT) N = 472796.48 E = 777580.98</p> <p>W/4 CORNER SEC. 22 SCALED</p> <p>SECTION CORNER LAT. = 32.2829508N LONG. = 103.5687577W NMSP EAST (FT) N = 467512.36 E = 777619.12</p> <p>W/4 CORNER SEC. 27 LAT. = 32.2756899N LONG. = 103.5687542W NMSP EAST (FT) N = 464870.84 E = 777639.03</p> <p>SECTION CORNER LAT. = 32.2684420N LONG. = 103.5687493W NMSP EAST (FT) N = 462234.08 E = 777659.34</p> <p>W/4 CORNER SEC. 34 LAT. = 32.2611700N LONG. = 103.5687420W NMSP EAST (FT) N = 459588.56 E = 777680.44</p> <p>SW CORNER SEC. 34 LAT. = 32.2539037N LONG. = 103.5687408W NMSP EAST (FT) N = 450945.13 E = 777699.63</p>	<p>N/4 CORNER SEC. 22 LAT. = 32.2974646N LONG. = 103.5682208W NMSP EAST (FT) N = 472811.32 E = 780219.33</p> <p>W/4 CORNER SEC. 22 SCALED</p> <p>SECTION CORNER LAT. = 32.2965478N LONG. = 103.5529045W NMSP EAST (FT) N = 472494.21 E = 782482.46</p> <p>QUARTER CORNER LAT. = 32.2829394N LONG. = 103.5602131W NMSP EAST (FT) N = 467527.14 E = 780259.81</p> <p>NOTE: LATITUDE AND LONGITUDE COORDINATES ARE SHOWN USING THE NORTH AMERICAN DATUM OF 1983 (NAD83). LISTED NEW MEXICO STATE PLANE EAST COORDINATES ARE GRID (NAD83). BASIS OF BEARING AND DISTANCES USED ARE NEW MEXICO STATE PLANE EAST COORDINATES MODIFIED TO THE SURFACE. ELEVATION VALUES ARE NAVD 88.</p> <p>SECTION CORNER LAT. = 32.2684152N LONG. = 103.5516675W NMSP EAST (FT) N = 462262.37 E = 782938.28</p> <p>W/4 CORNER SEC. 34 LAT. = 32.2611700N LONG. = 103.5687420W NMSP EAST (FT) N = 459588.56 E = 777680.44</p> <p>SW CORNER SEC. 34 LAT. = 32.2539037N LONG. = 103.5687408W NMSP EAST (FT) N = 450945.13 E = 777699.63</p>	<p>NE CORNER SEC. 22 LAT. = 32.2974530N LONG. = 103.5516745W NMSP EAST (FT) N = 472826.30 E = 782860.12</p> <p>E/4 CORNER SEC. 22 LAT. = 32.2901991N LONG. = 103.5516779W NMSP EAST (FT) N = 470187.30 E = 782878.31</p> <p>SECTION CORNER LAT. = 32.2829270N LONG. = 103.5516698W NMSP EAST (FT) N = 467541.76 E = 782900.10</p> <p>E/4 CORNER SEC. 27 LAT. = 32.2757053N LONG. = 103.5516694W NMSP EAST (FT) N = 464914.49 E = 782919.36</p> <p>SECTION CORNER LAT. = 32.2684152N LONG. = 103.5516675W NMSP EAST (FT) N = 462262.37 E = 782938.28</p> <p>E/4 CORNER SEC. 34 LAT. = 32.2538795N LONG. = 103.5516653W NMSP EAST (FT) N = 456974.34 E = 782978.47</p>	<p><sup>17</sup> OPERATOR CERTIFICATION I hereby certify that the information contained herein is true and complete to the best of my knowledge and belief, and that this organization either owns a working interest or unleased mineral interest in the land including the proposed bottom hole location or has a right to drill this well at this location pursuant to a contract with an owner of such a mineral or working interest, or to a voluntary pooling agreement or a compulsory pooling order heretofore entered by the division.</p> <p><i>Rebecca Deal</i> 1/30/2017 Signature Date <b>Rebecca Deal, Regulatory Analyst</b> Printed Name <b>rebecca.deal@dmn.com</b> E-mail Address</p> <p><sup>18</sup> SURVEYOR CERTIFICATION I hereby certify that the well location shown on this plat was plotted from field notes of actual surveys made by me or under my supervision, and that the same is true and correct to the best of my belief.</p> <p>JANUARY 30, 2017 Date of Survey <i>FILMON F. JARAMILLO</i> Signature and Seal of Professional Surveyor Certificate Number: <b>FILMON F. JARAMILLO, PLS 12797</b> SURVEY NO. 4713D</p>
--	---	--	--

SECTION 34, TOWNSHIP 23 SOUTH, RANGE 33 EAST, N.M.P.M.  
LEA COUNTY, STATE OF NEW MEXICO  
SITE MAP



010 50 100 200  
SCALE 1" = 100'

**DIRECTIONS TO LOCATION**

FROM STATE HWY. 128 AND CR. J2 (BRININSTOOL) GO NORTH ON J2 3.1 MILES, TURN RIGHT ON CALICHE ROAD AND GO EAST 0.45 MILE, BEND LEFT AND GO NORTH 0.1 MILE, BEND RIGHT AND GO SOUTHEAST 0.4 MILE, BEND LEFT AND GO EAST 0.21 MILE TO A PROPOSED ROAD SURVEY AND FOLLOW FLAGS SOUTH 27' TO THE NORTHEAST CORNER OF PAD FOR THIS LOCATION.

DEVON ENERGY PRODUCTION COMPANY, L.P.  
**THISTLE UNIT 102H**

LOCATED 215 FT. FROM THE SOUTH LINE  
AND 400 FT. FROM THE EAST LINE OF  
SECTION 34, TOWNSHIP 23 SOUTH,  
RANGE 33 EAST, N.M.P.M.  
LEA COUNTY, STATE OF NEW MEXICO

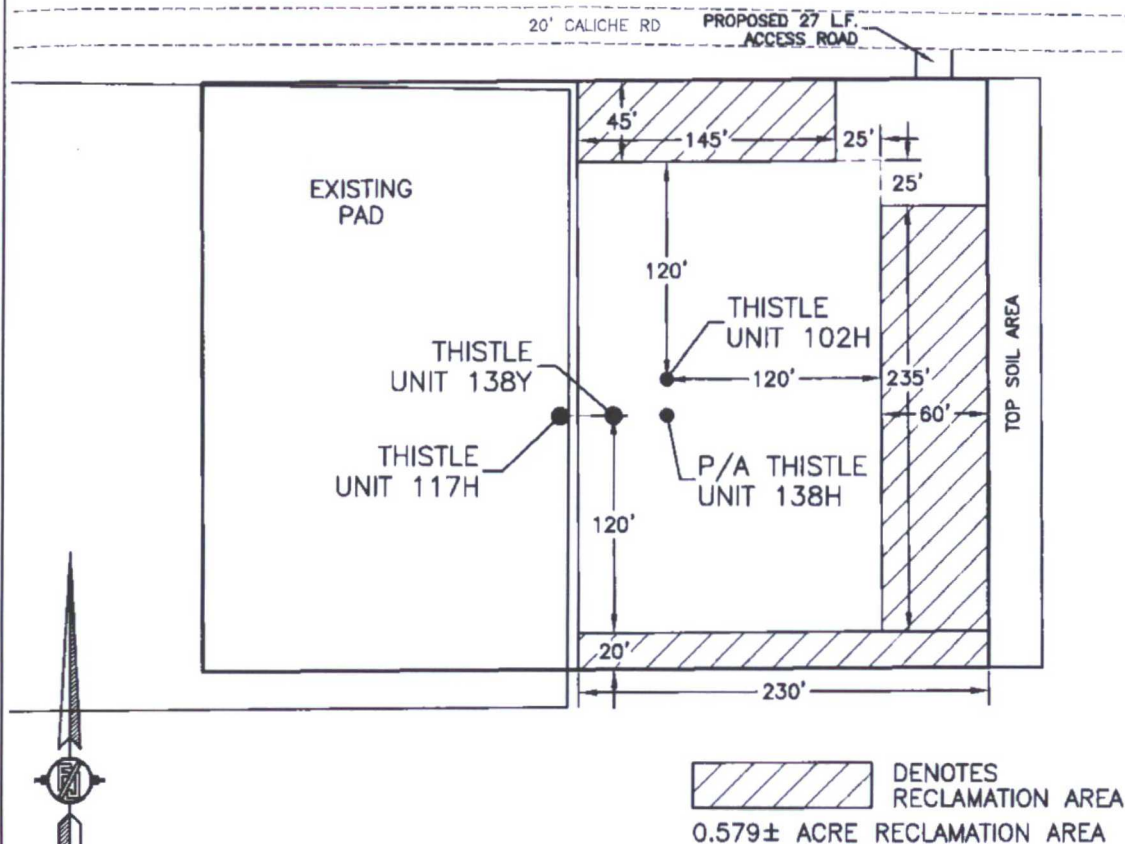
JANUARY 30, 2017

SURVEY NO. 4713D

MADRON SURVEYING, INC. 301 SOUTH CANAL (575) 234-3341 CARLSBAD, NEW MEXICO



**PROPOSED INTERIM SITE RECLAMATION  
FOR THISTLE UNIT 102H  
SECTION 34, TOWNSHIP 23 SOUTH, RANGE 33 EAST, N.M.P.M.  
LEA COUNTY, STATE OF NEW MEXICO**



0 10 50 100 200  
SCALE 1" = 100'

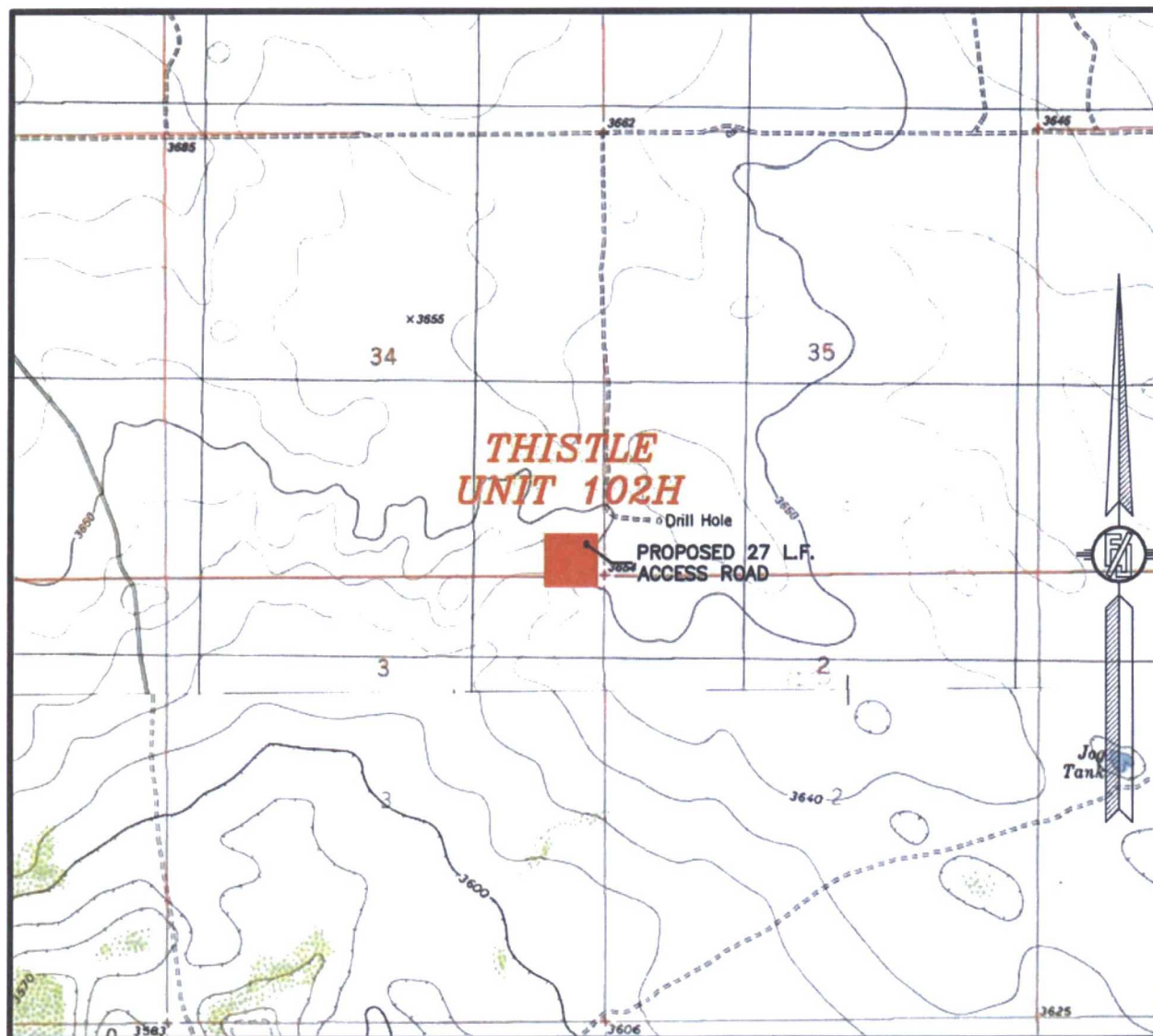
**DEVON ENERGY PRODUCTION COMPANY, L.P.  
THISTLE UNIT 102H  
LOCATED 215 FT. FROM THE SOUTH LINE  
AND 400 FT. FROM THE EAST LINE OF  
SECTION 34, TOWNSHIP 23 SOUTH,  
RANGE 33 EAST, N.M.P.M.  
LEA COUNTY, STATE OF NEW MEXICO**

JANUARY 30, 2017

SURVEY NO. 4713D

MADRON SURVEYING, INC. 301 SOUTH CANAL CARLSBAD, NEW MEXICO  
(575) 234-3341

SECTION 34, TOWNSHIP 23 SOUTH, RANGE 33 EAST, N.M.P.M.  
LEA COUNTY, STATE OF NEW MEXICO  
LOCATION VERIFICATION MAP



USGS QUAD MAP:  
TIP TOP WELLS

NOT TO SCALE

DEVON ENERGY PRODUCTION COMPANY, L.P.  
**THISTLE UNIT 102H**

LOCATED 215 FT. FROM THE SOUTH LINE  
AND 400 FT. FROM THE EAST LINE OF  
SECTION 34, TOWNSHIP 23 SOUTH,  
RANGE 33 EAST, N.M.P.M.  
LEA COUNTY, STATE OF NEW MEXICO

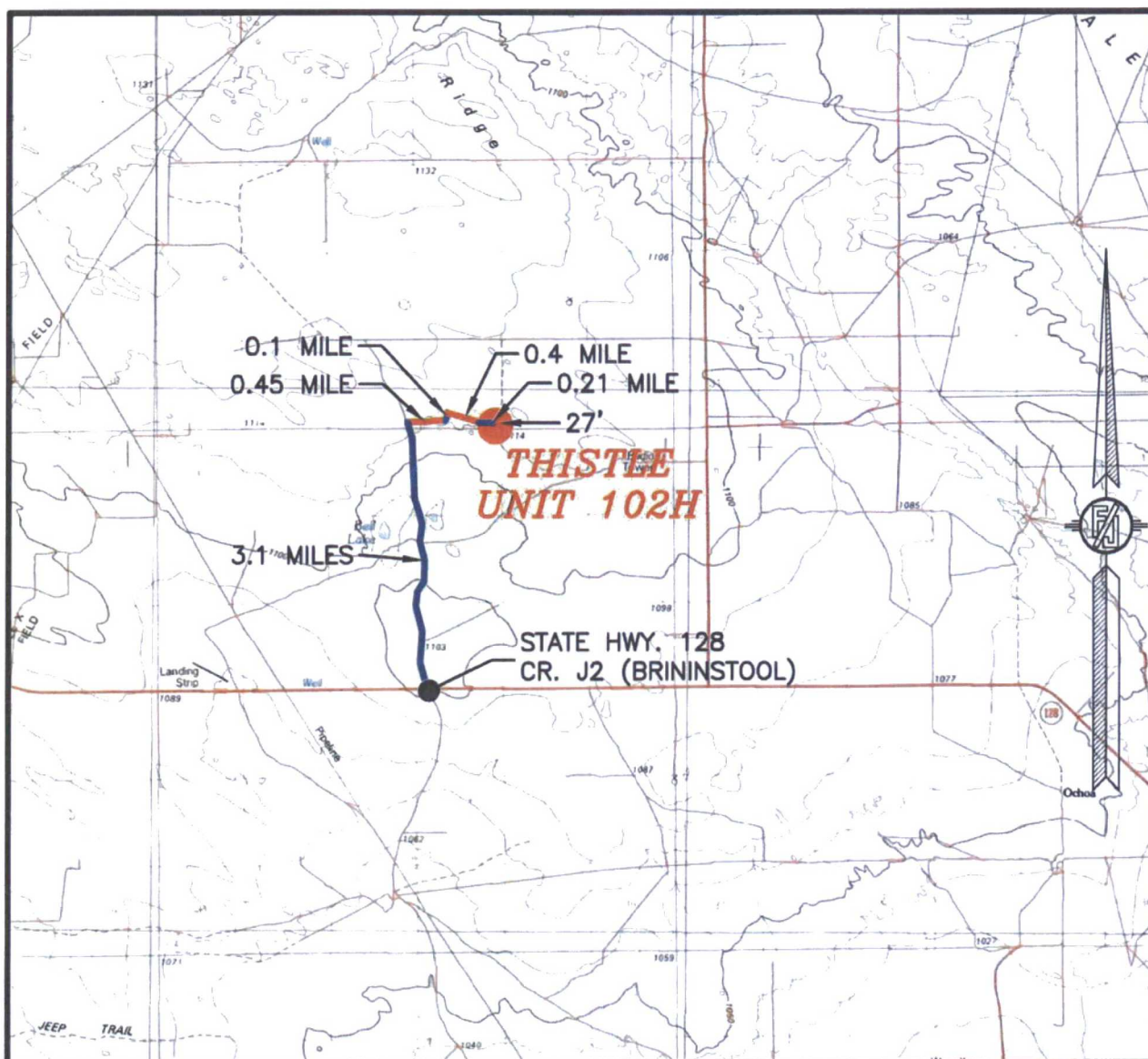
JANUARY 30, 2017

MADRON SURVEYING, INC. 301 SOUTH CANAL  
(575) 234-3341

SURVEY NO. 4713D  
CARLSBAD, NEW MEXICO



SECTION 34, TOWNSHIP 23 SOUTH, RANGE 33 EAST, N.M.P.M.  
LEA COUNTY, STATE OF NEW MEXICO  
VICINITY MAP



DISTANCES IN MILES

NOT TO SCALE

**DIRECTIONS TO LOCATION**

FROM STATE HWY. 128 AND CR. J2 (BRININSTOOL) GO NORTH ON J2 3.1 MILES, TURN RIGHT ON CALICHE ROAD AND GO EAST 0.45 MILE, BEND LEFT AND GO NORTH 0.1 MILE, BEND RIGHT AND GO SOUTHEAST 0.4 MILE, BEND LEFT AND GO EAST 0.21 MILE TO A PROPOSED ROAD SURVEY AND FOLLOW FLAGS SOUTH 27' TO THE NORTHEAST CORNER OF PAD FOR THIS LOCATION.

DEVON ENERGY PRODUCTION COMPANY, L.P.  
**THISTLE UNIT 102H**

LOCATED 215 FT. FROM THE SOUTH LINE  
AND 400 FT. FROM THE EAST LINE OF  
SECTION 34, TOWNSHIP 23 SOUTH,  
RANGE 33 EAST, N.M.P.M.  
LEA COUNTY, STATE OF NEW MEXICO

JANUARY 30, 2017

MADRON SURVEYING, INC. 301 SOUTH CANAL  
(575) 234-3341

SURVEY NO. 4713D  
CARLSBAD, NEW MEXICO

SECTION 34, TOWNSHIP 23 SOUTH, RANGE 33 EAST, N.M.P.M.  
LEA COUNTY, STATE OF NEW MEXICO  
**AERIAL PHOTO**



NOT TO SCALE  
AERIAL PHOTO:  
GOOGLE EARTH  
FEB. 2014

**DEVON ENERGY PRODUCTION COMPANY, L.P.**  
**THISTLE UNIT 102H**

LOCATED 215 FT. FROM THE SOUTH LINE  
AND 400 FT. FROM THE EAST LINE OF  
SECTION 34, TOWNSHIP 23 SOUTH,  
RANGE 33 EAST, N.M.P.M.  
LEA COUNTY, STATE OF NEW MEXICO

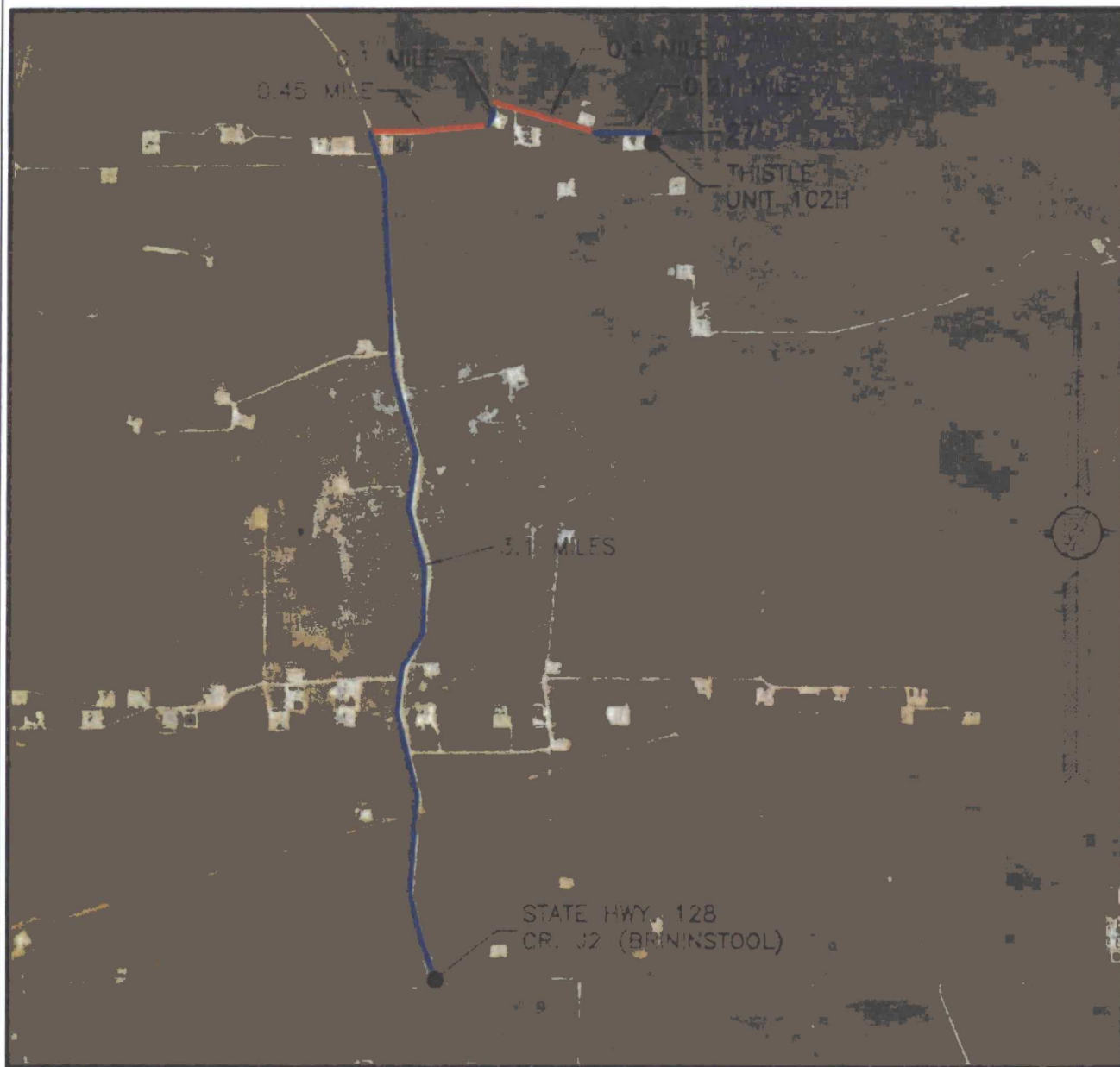
JANUARY 30, 2017

SURVEY NO. 4713D

MADRON SURVEYING, INC. 301 SOUTH CANAL (575) 234-3341 CARLSBAD, NEW MEXICO



SECTION 34, TOWNSHIP 23 SOUTH, RANGE 33 EAST, N.M.P.M.  
LEA COUNTY, STATE OF NEW MEXICO  
**AERIAL ACCESS ROUTE MAP**



NOT TO SCALE  
AERIAL PHOTO:  
GOOGLE EARTH  
FEB. 2014

**DEVON ENERGY PRODUCTION COMPANY, L.P.**

**THISTLE UNIT 102H**

LOCATED 215 FT. FROM THE SOUTH LINE  
AND 400 FT. FROM THE EAST LINE OF  
SECTION 34, TOWNSHIP 23 SOUTH,  
RANGE 33 EAST, N.M.P.M.  
LEA COUNTY, STATE OF NEW MEXICO

JANUARY 30, 2017

SURVEY NO. 4713D

MADRON SURVEYING, INC. 301 SOUTH CANAL (575) 234-3341 CARLSBAD, NEW MEXICO