

R 32 E

Sec. 14

Bureau of Land Management

Sec. 13

Bureau of Land Management

T  
26  
S

Sec. 23

Bureau of Land Management

Sec. 24

Bureau of Land Management

Sec. 25

Bureau of Land Management

DETAIL

Scale: 1" = 1000'

1000' 0 500' 1000'

CHEVRON U.S.A. INC.

WORK AREA DETAIL FOR THE  
SD WE 24 FED P24 5H-7H WELLS  
SECTIONS 23, 24 & 25, T26S-R32E  
LEA COUNTY, NEW MEXICO



C. H. Fenstermaker & Associates, L.L.C.  
135 Regency Sq. Lafayette, LA 70508  
Ph. 337-237-2200 Fax. 337-232-3299  
www.fenstermaker.com

DRAWN BY: VHV

REVISIONS

PROJ. MGR.: VHV

No. 1

DATE: 10/13/2016

REVISED BY: VHV

DATE: 08/02/2016

No. #

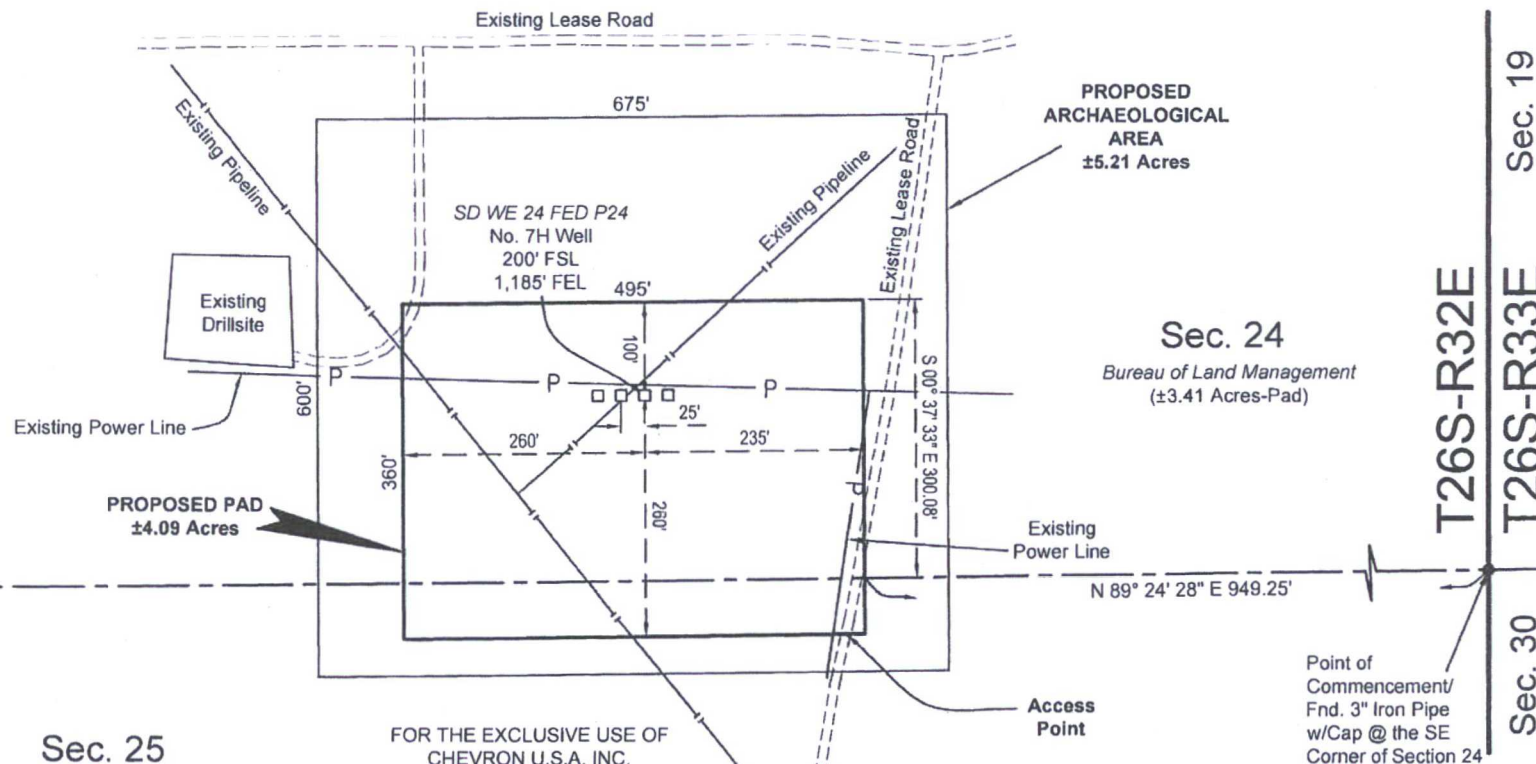
DATE:

REVISED BY:

FILENAME: T:\2015\2153305\DWG\SD WE 24 FED P24 5H-7H\_AerialDetail.dwg

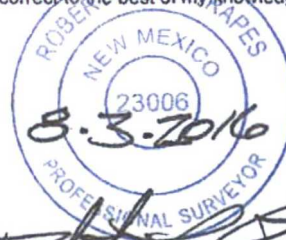
SD WE 24 FED P24 NO. 7H WELL		NW ARCH. AREA CORNER	NE ARCH. AREA CORNER	SE ARCH. AREA CORNER	SW ARCH. AREA CORNER
X= 720,095 NAD 27		X= 719,742 NAD 27	X= 720,417 NAD 27	X= 720,422 NAD 27	X= 719,747 NAD 27
Y= 372,222		Y= 372,518	Y= 372,525	Y= 371,924	Y= 371,918
LAT. 32 02'13.63"		ELEVATION +3141' NAVD 88	ELEVATION +3140' NAVD 88	ELEVATION +3136' NAVD 88	ELEVATION +3136' NAVD 88
LONG. 103.623181		NW PAD CORNER	NE PAD CORNER	SE PAD CORNER	SW PAD CORNER
X= 761,282 NAD83		X= 719,834 NAD 27	X= 720,329 NAD 27	X= 720,332 NAD 27	X= 719,837 NAD 27
Y= 372,279		Y= 372,319	Y= 372,324	Y= 371,964	Y= 371,959
LAT. 32.021488		ELEVATION +3139' NAVD 88	ELEVATION +3139' NAVD 88	ELEVATION +3137' NAVD 88	ELEVATION +3137' NAVD 88
LONG. 103.623649					
ELEVATION +3136' NAVD 88					

LEGEND	
	Section Line
	Township/Range Line
	Existing Pipeline
	Existing Powerline
	Existing Lease Road
	End Monument



Sec. 25  
Bureau of Land Management  
(±0.68 Acres-Pad)

FOR THE EXCLUSIVE USE OF  
CHEVRON U.S.A. INC.  
I, Robert L. Lastrapes, Professional  
Surveyor, do hereby state this plat is true  
and correct to the best of my knowledge.



Robert L. Lastrapes  
Registration No. 23006

# SURFACE USE PLAT

Page 1 of 2

**CHEVRON U.S.A. INC.**  
PROPOSED PAD  
SD WE 24 FED P24 NO. 7H WELL  
SECTIONS 24 & 25, T26S-R32E  
LEA COUNTY, NEW MEXICO

DRAWN BY: BOR

## REVISIONS

PROJ. MGR.: VHV	No.	DATE:	REVISED BY:
DATE: JUNE 21, 2016	No.	DATE:	REVISED BY:
FILENAME: T:\2015\2153309\DWG\SD WE 24 FED P24 7H_SUP.dwg			



Scale: 1" = 200'

200' 0 100' 200'



C. H. Fenstermaker & Associates, L.L.C.  
135 Regency Sq. Lafayette, LA 70508  
Ph. 337-237-2200 Fax 337-232-3299  
www.fenstermaker.com



**NOTE:**

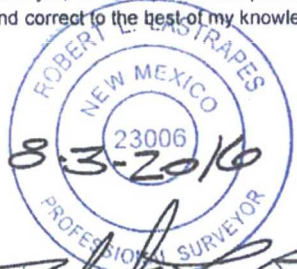
Please be advised, that while reasonable efforts are made to locate and verify pipelines and anomalies using our standard pipeline locating equipment, it is impossible to be 100 % effective. As such, we advise using caution when performing work as there is a possibility that pipelines and other hazards, such as fiber optic cables, PVC pipelines, etc. may exist undetected on site.

**NOTE:**

Many states maintain information centers that establish links between those who dig (excavators) and those who own and operate underground facilities (operators). It is advisable and in most states, law, for the contractor to contact the center for assistance in locating and marking underground utilities. For guidance: New Mexico One Call System - [www.nmonecall.org](http://www.nmonecall.org).

**DISCLAIMER:** At this time, C. H. Fenstermaker & Associates, L.L.C. has not performed nor was asked to perform any type of engineering, hydrological modeling, flood plain, or "No Rise" certification analyses, including but not limited to determining whether the project will impact flood hazards in connection with federal/FEMA, state, and/or local laws, ordinances and regulations. Accordingly, Fenstermaker makes no warranty or representation of any kind as to the foregoing issues, and persons or entities using this information shall do so at their own risk.

FOR THE EXCLUSIVE USE OF  
CHEVRON U.S.A. INC.  
I, Robert L. Lastrapes, Professional  
Surveyor, do hereby state this plat is true  
and correct to the best of my knowledge.

  
Robert L. Lastrapes  
Registration No. 23006

**SURFACE USE PLAT**

Page 2 of 2

**CHEVRON U.S.A. INC.**  
PROPOSED PAD  
SD WE 24 FED P24 NO. 7H WELL  
SECTIONS 24 & 25, T26S-R32E  
LEA COUNTY, NEW MEXICO

DRAWN BY: BOR

**REVISIONS**

PROJ. MGR.: VHV

No.

DATE:

REVISED BY:

DATE: JUNE 21, 2016

No.

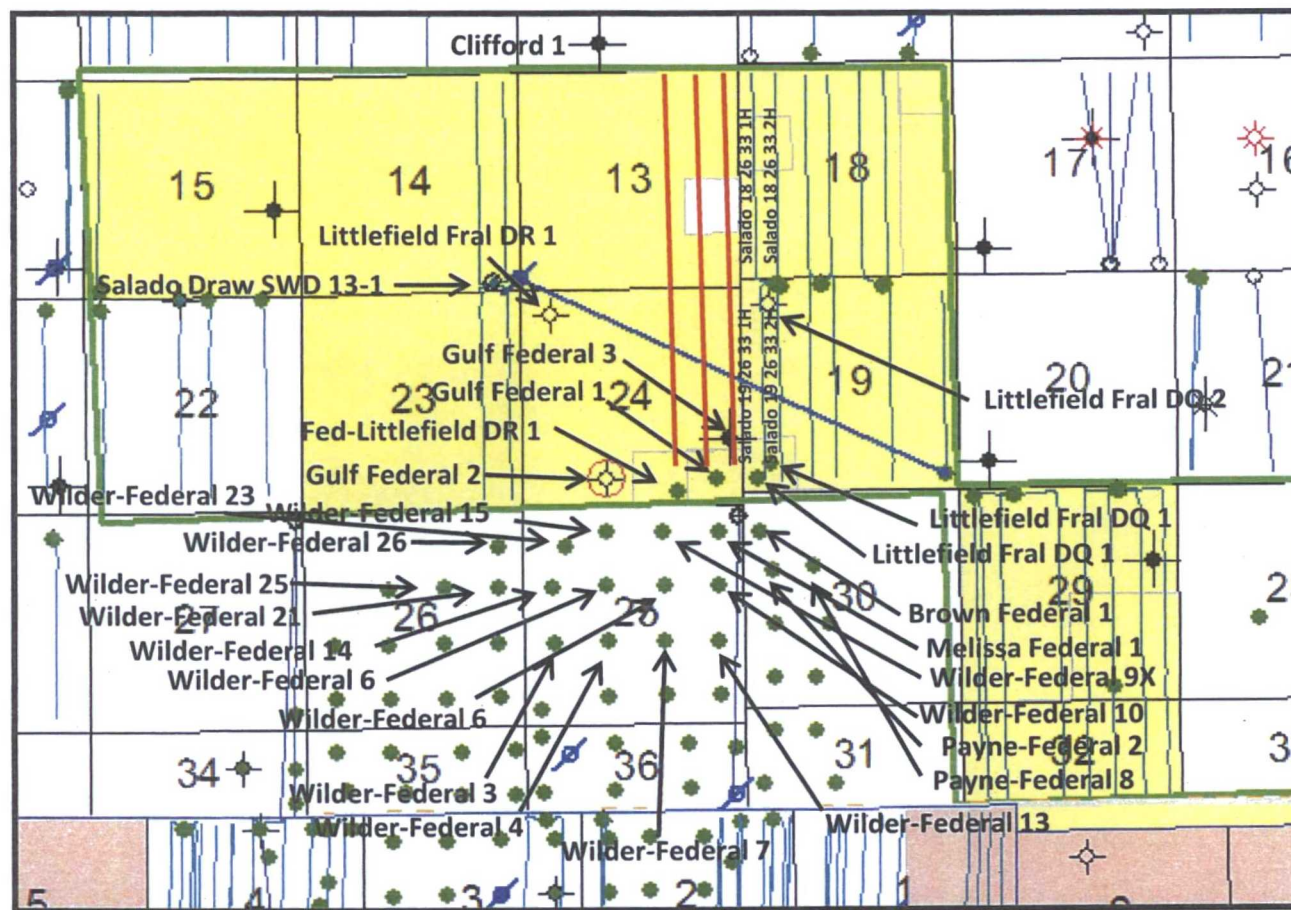
DATE:

REVISED BY:

FILENAME: T:\2015\2153309\DWG\SD WE 24 FED P24 7H\_SUP.dwg



C. H. Fenstermaker & Associates, L.L.C.  
135 Regency Sq. Lafayette, LA 70508  
Ph 337-237-2200 Fax 337-232-3299  
[www.fenstermaker.com](http://www.fenstermaker.com)

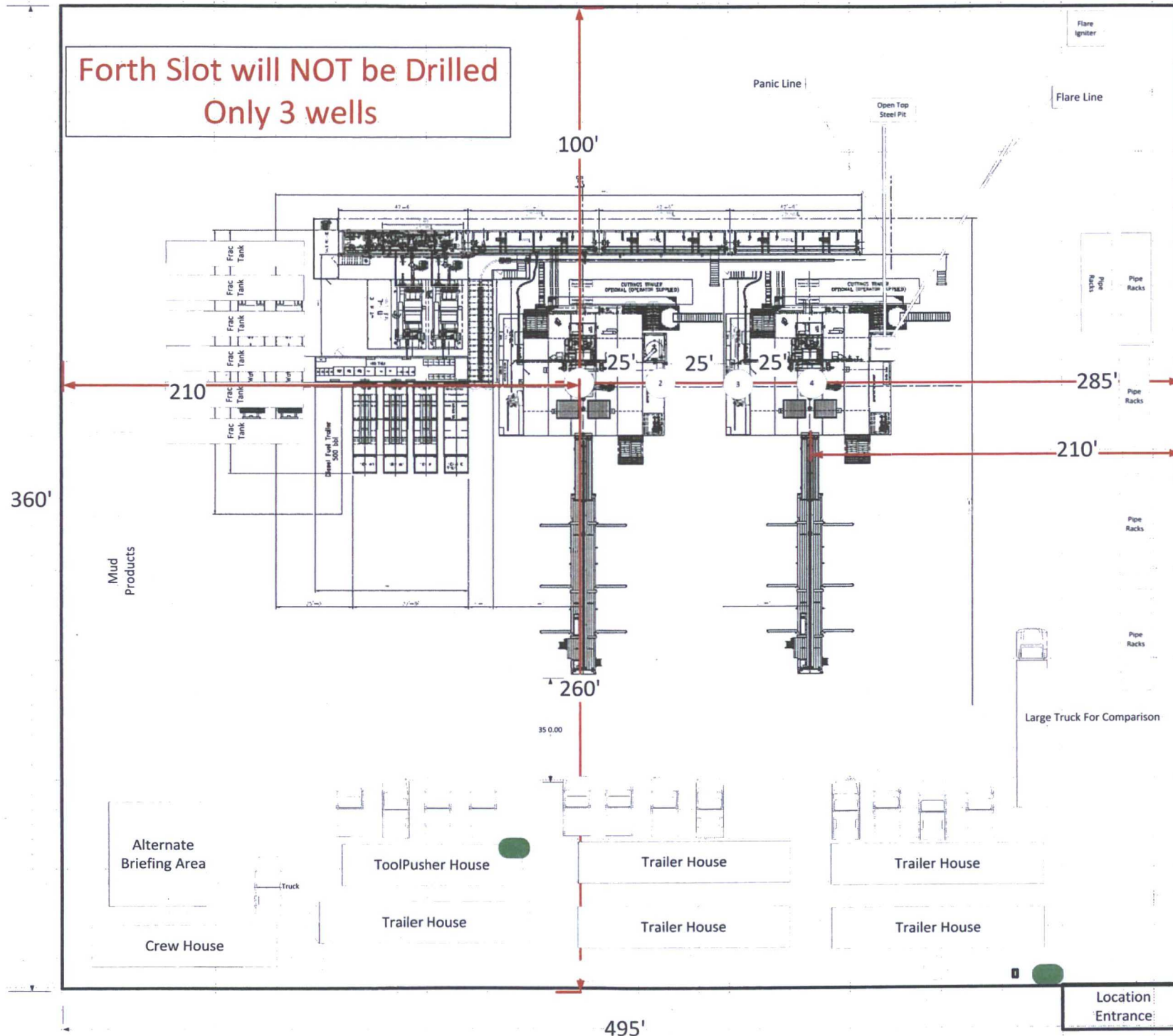


Pad 24 Projected Wellpath

# Nabors Pace X SD WE 24 Fed P24 5-7H



**Forth Slot will NOT be Drilled  
Only 3 wells**



*Rig layout shows  
rig in first and last  
well for illustration  
purposes.*

- H2S Monitor Locations:**
- Bop/Cellar
  - Rig Floor
  - Shaker Skid
  - Bell Nipple

- Flag Locations**
- Sign-in Shack
  - Rig Floor
  - Dog House

- 10 Minute Escape Packs**
- 1 at Pits
  - 1 at Trip Tank
  - 1 at Accumulator
  - 4 at Rig Floor

- 45 Minute Escape Packs**
- 2 at Briefing Area
  - 2 at Alternate Briefing Area

- Legend**
- H2S Monitor

- Flag



SD WE 24 FED P24  
NO. 5H WELL

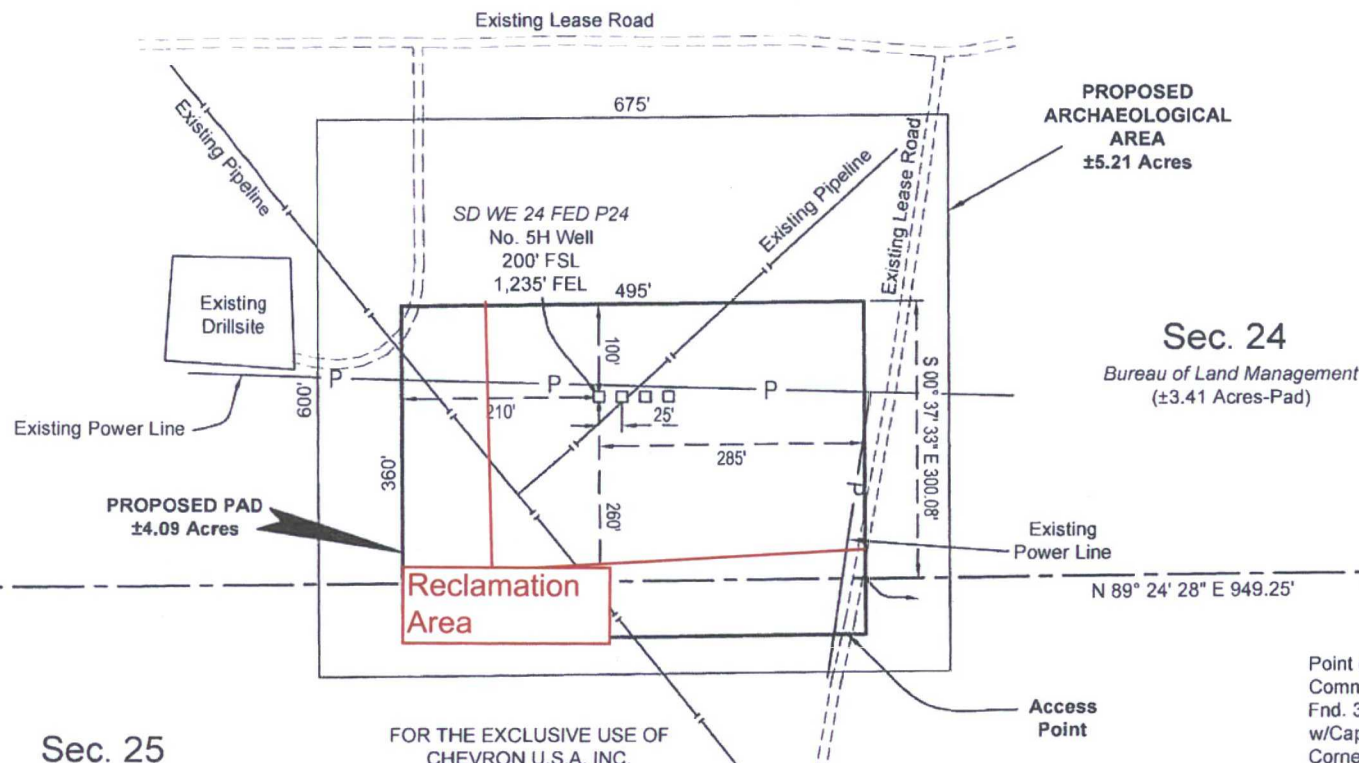
X= 720,045 NAD 27  
Y= 372,221  
LAT 32.021363  
LONG. 103.623342

X= 761,232 NAD83  
Y= 372,278  
LAT 32.021488  
LONG 103.623810

ELEVATION +3138' NAVD 88

NW ARCH. AREA CORNER	NE ARCH. AREA CORNER	SE ARCH. AREA CORNER	SW ARCH. AREA CORNER
X= 719,742 NAD 27 Y= 372,518	X= 720,417 NAD 27 Y= 372,525	X= 720,422 NAD 27 Y= 371,924	X= 719,747 NAD 27 Y= 371,918
ELEVATION +3141' NAVD 88	ELEVATION +3140' NAVD 88	ELEVATION +3136' NAVD 88	ELEVATION +3136' NAVD 88
NW PAD CORNER	NE PAD CORNER	SE PAD CORNER	SW PAD CORNER
X= 719,834 NAD 27 Y= 372,319	X= 720,329 NAD 27 Y= 372,324	X= 720,332 NAD 27 Y= 371,964	X= 719,837 NAD 27 Y= 371,959
ELEVATION +3139' NAVD 88	ELEVATION +3139' NAVD 88	ELEVATION +3137' NAVD 88	ELEVATION +3137' NAVD 88

LEGEND	
	Section Line
	Township/Range Line
	Existing Pipeline
	Existing Powerline
	Existing Lease Road
	End Monument



T26S-R32E  
T26S-R33E

Sec. 19

Sec. 30

Sec. 25  
Bureau of Land Management  
(±0.68 Acres-Pad)

FOR THE EXCLUSIVE USE OF  
CHEVRON U.S.A. INC.  
I, Robert L. Lastrapes, Professional  
Surveyor, do hereby state this plat is true  
and correct to the best of my knowledge.

ROBERT L. LASTRAPES  
NEW MEXICO  
23006  
8.3.2016  
PROFESIONAL SURVEYOR

Robert L. Lastrapes  
Registration No. 23006

SURFACE USE PLAT

Page 1 of 2

CHEVRON U.S.A. INC.  
PROPOSED PAD  
SD WE 24 FED P24 NO. 5H WELL  
SECTIONS 24 & 25, T26S-R32E  
LEA COUNTY, NEW MEXICO

DRAWN BY: BOR		REVISIONS	
PROJ. MGR.: VHV	No.	DATE:	REVISED BY:
DATE: JUNE 21, 2016	No.	DATE:	REVISED BY:
FILENAME: T:\2015\2153305\DWG\SD WE 24 FED P24 5H SUP.dwg			



Scale: 1" = 200'

200' 0 100' 200'



C. H. Fenstermaker & Associates, L.L.C.  
135 Regency Sq. Lafayette, LA 70508  
Ph. 337-237-2200 Fax. 337-232-3299  
www.fenstermaker.com

**NOTE:**

Please be advised, that while reasonable efforts are made to locate and verify pipelines and anomalies using our standard pipeline locating equipment, it is impossible to be 100 % effective. As such, we advise using caution when performing work as there is a possibility that pipelines and other hazards, such as fiber optic cables, PVC pipelines, etc. may exist undetected on site.

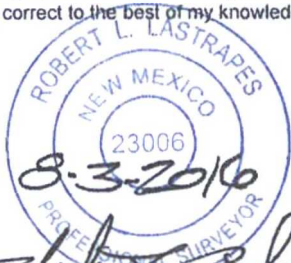
**NOTE:**

Many states maintain information centers that establish links between those who dig (excavators) and those who own and operate underground facilities (operators). It is advisable and in most states, law, for the contractor to contact the center for assistance in locating and marking underground utilities. For guidance: New Mexico One Call System - [www.nmonecall.org](http://www.nmonecall.org).

**DISCLAIMER:** At this time, C. H. Fenstermaker & Associates, L.L.C. has not performed nor was asked to perform any type of engineering, hydrological modeling, flood plain, or "No Rise" certification analyses, including but not limited to determining whether the project will impact flood hazards in connection with federal/FEMA, state, and/or local laws, ordinances and regulations. Accordingly, Fenstermaker makes no warranty or representation of any kind as to the foregoing issues, and persons or entities using this information shall do so at their own risk.

FOR THE EXCLUSIVE USE OF  
CHEVRON U.S.A. INC.

I, Robert L. Lastrapes, Professional  
Surveyor, do hereby state this plat is true  
and correct to the best of my knowledge.

  
Robert L. Lastrapes  
Registration No. 23006

**SURFACE USE PLAT**

Page 2 of 2

**CHEVRON U.S.A. INC.**  
PROPOSED PAD  
SD WE 24 FED P24 NO. 5H WELL  
SECTIONS 24 & 25, T26S-R32E  
LEA COUNTY, NEW MEXICO

DRAWN BY: BOR

**REVISIONS**

PROJ. MGR.: VHV

No.

DATE:

REVISED BY:

DATE: JUNE 21, 2016

No.

DATE:

REVISED BY:

FILENAME: T:\2015\2153305\DWG\SD WE 24 FED P24 5H SUP.dwg



C. H. Fenstermaker & Associates, L.L.C.  
135 Regency Sq Lafayette, LA 70508  
Ph. 337-237-2200 Fax 337-232-3299  
[www.fenstermaker.com](http://www.fenstermaker.com)