

Submit 3 Copies To Appropriate District
Office
District I
1625 N. French Dr., Hobbs, NM 88240
District II
1301 W. Grand Ave., Artesia, NM 88210
District III
1000 Rio Brazos Rd., Aztec, NM 87410
District IV
1220 S. St. Francis Dr., Santa Fe, NM
87505

State of New Mexico
Energy, Minerals and Natural Resources

Form C-103
May 27, 2004

OIL CONSERVATION DIVISION
1220 South St. Francis Dr.
Santa Fe, NM 87505

WELL API NO. 30-025-03152

5. Indicate Type of Lease
STATE ☒ FEE ☐

6. State Oil & Gas Lease No.

7. Lease Name or Unit Agreement Name
South Vacuum Unit

8. Well Number 353

9. OGRID Number 164070

10. Pool name or Wildcat
Vacuum; Devonian, South

SUNDRY NOTICES AND REPORTS ON WELLS

(DO NOT USE THIS FORM FOR PROPOSALS TO DRILL OR TO DEEPEN OR PLUG BACK TO A DIFFERENT RESERVOIR. USE "APPLICATION FOR PERMIT" (FORM C-101) FOR SUCH PROPOSALS.)

1. Type of Well: Oil Well ☒ Gas Well ☐ Other

2. Name of Operator Paladin Energy Corp.

3. Address of Operator 10290 Monroe Dr., Suite 301
Dallas, Texas 75229

4. Well Location

Unit Letter C : 660 feet from the North line and 660 feet from the West line
Section 35 Township 18S Range 35E NMPM Lea County

11. Elevation (Show whether DR, RKB, RT, GR, etc.)
3870' GR

12. Check Appropriate Box to Indicate Nature of Notice, Report or Other Data

NOTICE OF INTENTION TO:

PERFORM REMEDIAL WORK ☐ PLUG AND ABANDON ☐
TEMPORARILY ABANDON ☐ CHANGE PLANS ☐
PULL OR ALTER CASING ☐ MULTIPLE COMPL ☐

OTHER: : T&A Well ☒

SUBSEQUENT REPORT OF:

REMEDIAL WORK ☐ ALTERING CASING ☐
COMMENCE DRILLING OPNS. ☐ P AND A ☐
CASING/CEMENT JOB ☐

OTHER

13. Describe proposed or completed operations. (Clearly state all pertinent details, and give pertinent dates, including estimated date of starting any proposed work). SEE RULE 1103. For Multiple Completions: Attach wellbore diagram of proposed completion or recompletion.

Request permission to extend T&A status..

Ru pumping unit. CIBP set at 11,420' above Devonian perforations from 11,520-580' & 11,600'-11,670. Fill Casing with fluid, test 5-1/2" casing to 500# for 30 minutes. Record chart. Submit chart.

Start Date:

Completion Date:

Condition of Approval: notify

OCD Hobbs office 24 hours

prior of running MIT Test & Chart

I hereby certify that the information above is true and complete to the best of my knowledge and belief.

SIGNATURE

David Plaisance

TITLE VP Exploration & Production DATE 3/17/2017

Type or print name: David Plaisance

E-mail address: dplaisance@paladinenergy.com Telephone No. 214-654-0132

For State Use Only

APPROVED BY:

Malays Brown

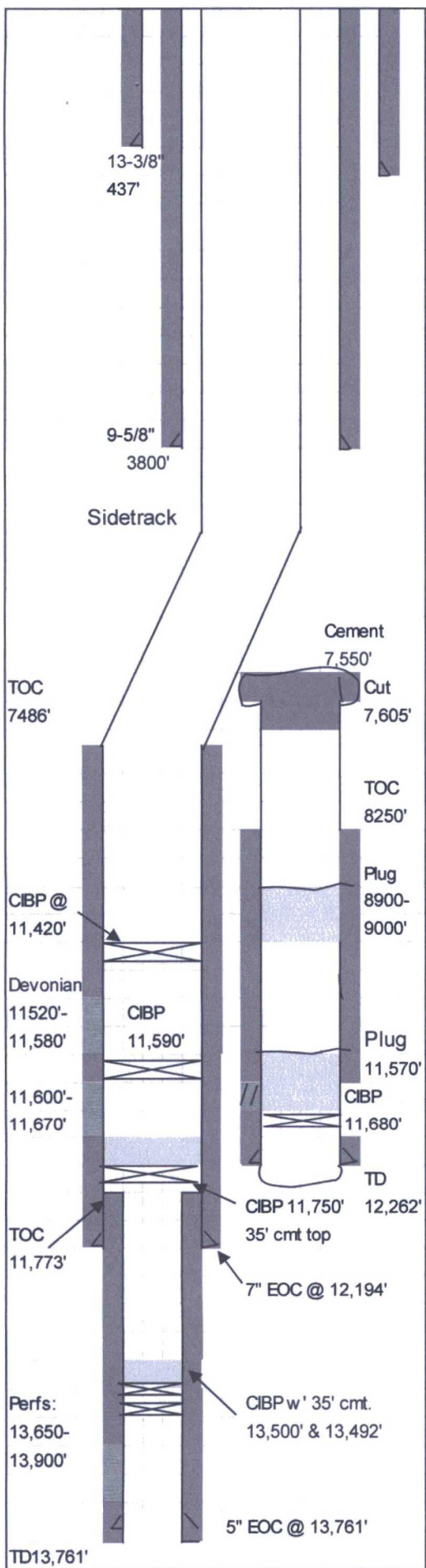
TITLE

AO/II

DATE

3/21/2017

Conditions of Approval (if any):



Lease: South Vacuum Unit Well: 35-3 API # 30-025-03152
 Operator: PALADIN Energy Corp.
 Field: South Vacuum County: Lea State New Mexico
 Section 35 Township 18-S Range 35-E
 Elev. GL 3870' Elev. DF Elev. KB
 Spudded Completed

| | | | | |
|----------------|---------|-------|-----------|---------|
| Surface Casing | 13-3/8" | 48# | Grade | |
| | Set @ | 437' | Hole Size | 17-1/2" |
| | TOC | surf. | Sacks | 450 |

| | | | | |
|---------------------|--------|---------|-----------|---------|
| Intermediate Casing | 9-5/8" | 40# | Grade | |
| | Set @ | 3800' | Hole Size | 12-1/4" |
| | TOC | Surface | Sacks | 1,300 |

| | | | | |
|-------------------|-------|----------|-----------|--------|
| Production Casing | 7" | 26 & 29# | Grade | N-80 |
| | Set @ | 12,194' | Hole Size | 8-3/4" |
| | TOC | 7,486' | Sacks | 715 |

| | | | | |
|--------------|--------|---------|-----------|---------|
| Liner Record | 5" | 18# | Grade | |
| | Top @ | 11,773' | Bottom @ | 13,761' |
| | Screen | | Hole Size | 6-1/8" |
| | TOC | 11,773' | Sacks | 250 |

| | | | |
|---------------|-----------------|-------------|-----|
| Tubing Detail | 2-3/8" & 2-7/8" | Grade/Trd. | |
| | Pkr. Set @ | 13,414' | EOT |
| | Nipples | X - 13,432' | |

| | | | |
|---------|--|------|--|
| Anchors | | Rods | |
|---------|--|------|--|

Perforation Record

| |
|--|
| |
| |
| |
| |
| |
| |
| |
| |

Completion

Perfs: Mckee : 13,506-09', 13,522-25', 13,556-59', 13,591-94', 13,627-30'.

Devonian: 11,600-670', 11,520-580'

CIBP at 13,500' & 13,492 w / 35 cement on top

CIBP at 11,590'

Set Retrieval Bridge Plug at 11,420'

Sidetracked and deepened to Mckee on 6/2004

Present Completion: 3/17/2017