

EOG RESOURCES, INC.
ORRTANNA 20 FED NO. 707H

1. GEOLOGIC NAME OF SURFACE FORMATION:

Permian

2. ESTIMATED TOPS OF IMPORTANT GEOLOGICAL MARKERS:

Rustler	825'
Top of Salt	1,176'
Base of Salt / Top Anhydrite	4,637'
Base Anhydrite	4,874'
Lamar	4,874'
Bell Canyon	4,901'
Cherry Canyon	5,918'
Brushy Canyon	7,478'
Bone Spring Lime	9,047'
1 st Bone Spring Sand	9,971'
2 nd Bone Spring Shale	10,280'
2 nd Bone Spring Sand	10,550'
3 rd Bone Spring Carb	11,086'
3 rd Bone Spring Sand	11,702'
Wolfcamp	12,167'
TD	12,326'

3. ESTIMATED DEPTHS OF ANTICIPATED FRESH WATER, OIL OR GAS:

Upper Permian Sands	0- 400'	Fresh Water
Cherry Canyon	5,918'	Oil
Brushy Canyon	7,478'	Oil
1 st Bone Spring Sand	9,971'	Oil
2 nd Bone Spring Shale	10,280'	Oil
2 nd Bone Spring Sand	11,550'	Oil
3 rd Bone Spring Carb	11,086'	Oil
3 rd Bone Spring Sand	11,702'	Oil
Wolfcamp	12,167'	Oil

No other Formations are expected to give up oil, gas or fresh water in measurable quantities. Surface fresh water sands will be protected by setting 10.75" casing at 850' and circulating cement back to surface.

**EOG RESOURCES, INC.
ORRTANNA 20 FED NO. 707H**

4. CASING PROGRAM - NEW

Hole Size	Interval	Csg OD	Weight	Grade	Conn	DF _{min} Collapse	DF _{min} Burst	DF _{min} Tension
14.75"	0 – 850'	10.75"	40.5#	J55	STC	1.125	1.25	1.60
9.875"	0 – 1,000'	7.625"	29.7#	HCP-110	LTC	1.125	1.25	1.60
9.875"	1,000' – 3,000'	7.625"	29.7#	P-110EC	SLIJ II	1.125	1.25	1.60
8.75"	3,000' – 11,100'	7.625"	29.7#	HCP-110	FlushMax III	1.125	1.25	1.60
6.75"	0' – 10,600'	5.5"	20#	P-110EC	DWC/C-IS MS	1.125	1.25	1.60
6.75"	10,600'-17,165'	5.5"	20#	P-110EC	VAM SFC	1.125	1.25	1.60

Variance is requested to wave the centralizer requirements for the 7-5/8" FJ casing in the 8-3/4" hole size. An expansion additive will be utilized, in the cement slurry, for the entire length of the 8-3/4" hole interval to maximize cement bond and zonal isolation.

Variance is also requested to wave any centralizer requirements for the 5-1/2" FJ casing in the 6-3/4" hole size. An expansion additive will be utilized, in the cement slurry, for the entire length of the 6-3/4" hole interval to maximize cement bond and zonal isolation.

Cementing Program:

Depth	No. Sacks	Wt. ppg	Yld Ft ³ /ft	Mix Water Gal/sk	Slurry Description
10-3/4" 850'	325	13.5	1.73	9.13	Class C + 4.0% Bentonite + 0.6% CD-32 + 0.5% CaCl ₂ + 0.25 lb/sk Cello-Flake (TOC @ Surface)
	200	14.8	1.34	6.34	Class C + 0.6% FL-62 + 0.25 lb/sk Cello-Flake + 0.2% Sodium Metasilicate
7-5/8" 11,100'	250	14.8	1.38	6.48	Class C + 5% Gypsum + 3% CaCl ₂ pumped via Bradenhead (TOC @ Surface)
	2000	14.8	1.38	6.48	Class C + 5% Gypsum + 3% CaCl ₂ pumped via Bradenhead
	550	14.4	1.20	4.81	50:50 Class H:Poz + 0.25% CPT20A + 0.40% CPT49 + 0.20% CPT35 + 0.80% CPT16A + 0.25% CPT503P pumped Conventionally
5-1/2" 17,165'	725	14.1	1.26	5.80	Class H + 0.1% C-20 + 0.05% CSA-1000 + 0.20% C-49 + 0.40% C-17 (TOC @ 10,600')

Note: Cement volumes based on bit size plus at least 25% excess in the open hole plus 10% excess in the cased-hole overlap section.

EOG RESOURCES, INC.
ORRTANNA 20 FED NO. 707H

5. MINIMUM SPECIFICATIONS FOR PRESSURE CONTROL:

Variance is requested to use a co-flex line between the BOP and choke manifold (instead of using a 4" OD steel line).

The minimum blowout preventer equipment (BOPE) shown in Exhibit #1 will consist of a single ram, mud cross and double ram-type (10,000 psi WP) preventer and an annular preventer (5000-psi WP). Both units will be hydraulically operated and the ram-type will be equipped with blind rams on bottom and drill pipe rams on top. All BOPE will be tested in accordance with Onshore Oil & Gas order No. 2.

Before drilling out of the surface casing, the ram-type BOP and accessory equipment will be tested to 5000/ 250 psig and the annular preventer to 3500/ 250 psig. The surface casing will be tested to 1500 psi for 30 minutes.

Before drilling out of the intermediate casing, the ram-type BOP and accessory equipment will be tested to 5000/ 250 psig and the annular preventer to 3500/ 250 psig. The intermediate casing will be tested to 2000 psi for 30 minutes.

Pipe rams will be operationally checked each 24-hour period. Blind rams will be operationally checked on each trip out of the hole. These checks will be noted on the daily tour sheets.

A hydraulically operated choke will be installed prior to drilling out of the intermediate casing shoe.

6. TYPES AND CHARACTERISTICS OF THE PROPOSED MUD SYSTEM:

During this procedure we plan to use a Closed-Loop System and haul contents to the required disposal.

The applicable depths and properties of the drilling fluid systems are as follows.

Depth	Type	Weight (ppg)	Viscosity	Water Loss
0 – 850'	Fresh - Gel	8.6-8.8	28-34	N/c
850' – 11,100'	Brine	8.8-10.0	28-34	N/c
11,100' – 17,165' Lateral	Oil Base	10.0-14.0	58-68	3 - 6

The highest mud weight needed to balance formation is expected to be 11.5 ppg. In order to maintain hole stability, mud weights up to 14.0 ppg may be utilized.

An electronic pit volume totalizer (PVT) will be utilized on the circulating system, to monitor pit volume, flow rate, pump pressure and stroke rate.

EOG RESOURCES, INC.
ORRTANNA 20 FED NO. 707H

Sufficient mud materials to maintain mud properties and meet minimum lost circulation and weight increase requirements will be kept at the wellsite at all times.

7. AUXILIARY WELL CONTROL AND MONITORING EQUIPMENT:

- (A) A kelly cock will be kept in the drill string at all times.
- (B) A full opening drill pipe-stabbing valve (inside BOP) with proper drill pipe connections will be on the rig floor at all times.
- (C) H₂S monitoring and detection equipment will be utilized from surface casing point to TD.

8. LOGGING, TESTING AND CORING PROGRAM:

Open-hole logs are not planned for this well.

GR-CCL Will be run in cased hole during completions phase of operations.

9. ABNORMAL CONDITIONS, PRESSURES, TEMPERATURES AND POTENTIAL HAZARDS:

The estimated bottom-hole temperature (BHT) at TD is 181 degrees F with an estimated maximum bottom-hole pressure (BHP) at TD of 7337 psig (based on 11.5 ppg MW). No hydrogen sulfide or other hazardous gases or fluids have been encountered, reported or are known to exist at this depth in this area. Severe loss circulation is expected from 7,300' to Intermediate casing point.

10. ANTICIPATED STARTING DATE AND DURATION OF OPERATIONS:

The drilling operation should be finished in approximately one month. If the well is productive, an additional 60-90 days will be required for completion and testing before a decision is made to install permanent facilities.

- (A) EOG Resources requests the option to contract a Surface Rig to drill, set surface casing, and cement on the subject well. If the timing between rigs is such that EOG Resources would not be able to preset the surface, the Primary Rig will MIRU and drill the well in its entirety per the APD.

EOG RESOURCES, INC.
ORRTANNA 20 FED NO. 707H

11. WELLHEAD:

A multi-bowl wellhead system will be utilized.

After running the 10-3/4" surface casing, a 13-5/8" BOP/BOPE system with a minimum working pressure of 5000 psi will be installed on the wellhead system and will be pressure tested to 250 psi low followed by a 5000 psi pressure test. This pressure test will be repeated at least every 30 days, as per Onshore Order No. 2

The minimum working pressure of the BOP and related BOPE required for drilling below the surface casing shoe shall be 5000 psi.

The multi-bowl wellhead will be installed by vendor's representative(s). A copy of the installation instructions for the Stream Flo FBD100 Multi-Bowl WH system has been sent to the NM BLM office in Carlsbad, NM.

The wellhead will be installed by a third party welder while being monitored by WH vendor's representative.

All BOP equipment will be tested utilizing a conventional test plug. Not a cup or J-packer type.

A solid steel body pack-off will be utilized after running and cementing the intermediate casing. After installation the pack-off and lower flange will be pressure tested to 5000 psi.

Both the surface and intermediate casing strings will be tested as per Onshore Order No. 2 to at least 0.22 psi/ft or 1500 psi, whichever is greater.

TECHNICAL SPECIFICATIONS

These specifications are furnished for general information only and are not intended for design purposes. This information is preliminary and may change subject to a final design by VAM-USA Engineering. This is not a controlled document.

DWC/C-IS MS
standard

Casing

5.500" O.D.

20.00 lb./ft.

VST P-110EC

VST P-110EC

125,000

135,000

Material

Grade

Minimum Yield Strength (psi.)

Minimum Ultimate Strength (psi.)

Pipe Dimensions

5.500

Nominal Pipe Body OD (in.)

4.778

Nominal Pipe Body ID (in.)

0.361

Nominal Wall Thickness (in.)

20.00

Nominal Weight (lbs./ft.)

19.83

Plain End Weight (lbs./ft.)

5.828

Nominal Pipe Body Area (sq. in.)

Pipe Body Performance Properties

729,000

Minimum Pipe Body Yield Strength (lbs.)

12,090

Minimum Collapse Pressure (psi.)

14,360

Minimum Internal Yield Pressure (psi.)

13,100

Hydrostatic Test Pressure (psi.)

Connection Dimensions

6.115

Connection OD (in.)

4.778

Connection ID (in.)

4.653

Connection Drift Diameter (in.)

4.13

Make-up Loss (in.)

5.828

Critical Area (sq. in.)

100.0

Joint Efficiency (%)

Connection Performance Properties

729,000

(1) Joint Strength (lbs.)

26,040

(2) Reference String Length (ft.) 1.4 Design Factor

728,000

(3) API Joint Strength (lbs.)

729,000

Compression Rating (lbs.)

12,090

API Collapse Pressure Rating (psi.)

14,360

(4) API Internal Pressure Resistance (psi.)

104.2

Maximum Uniaxial Bend Rating (degrees/100 ft.)

Approximated Field End Torque Values

16,600

(5) Minimum Final Torque (ft.-lbs.)

19,100

(5) Maximum Final Torque (ft.-lbs.)

21,600

(6) Connection Yield Torque (ft.-lbs.)

(1) Joint Strength is the minimum pipe body yield strength multiplied by the connection critical area.

(2) Reference String Length is the joint strength divided by both the weight in air and the design factor.

(3) API Joint Strength is for reference only. It is calculated from Formulas 42 and 43 in the API Bulletin 5C3.

(4) API Internal Pressure Resistance is calculated from Formulas 31, 32, and 35 in the API Bulletin 5C3.

(5) Torque values are approximated and may be affected by field conditions.

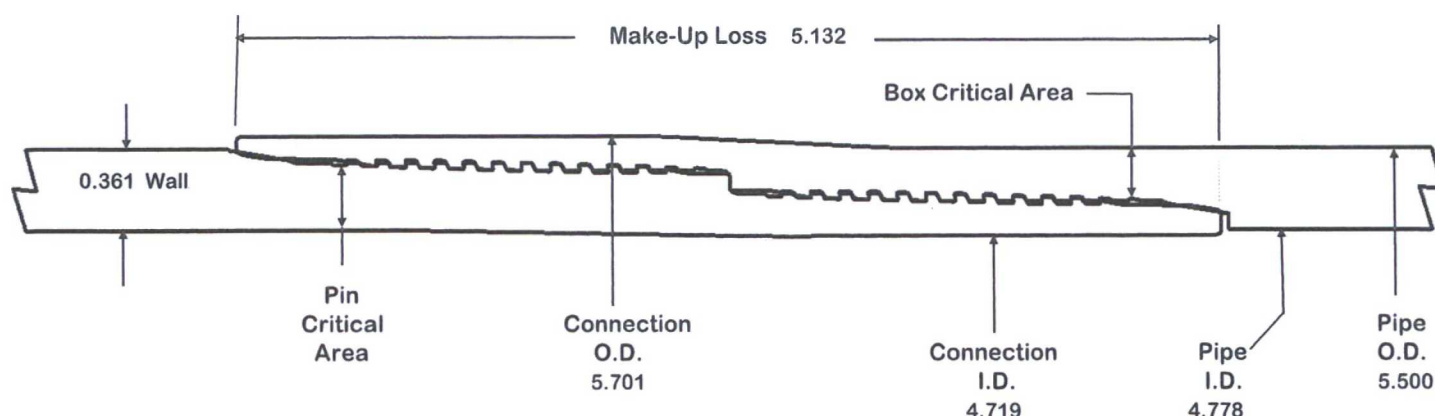
(6) Connection yield torque is not to be exceeded.

Connection specifications within the control of VAM-USA were correct as of the date printed. Specifications are subject to change without notice. Certain connection specifications are dependent on the mechanical properties of the pipe. Mechanical properties of mill proprietary pipe grades obtained from mill publications and are subject to change. Properties of mill proprietary grades should be confirmed with the mill. Users are advised to obtain current connection specifications and verify pipe mechanical properties for each application.



VAM-USA
4424 W. Sam Houston Pkwy, Suite 150
Houston, TX 77041
Phone: (713) 479-3200
Fax: (713) 479-3234
E-mail: VAMUSAsales@na.vallourec.com

VAM® SFC



O.D.
5.500

WEIGHT
20.00

WALL
0.361

GRADE
VST P110EC

DRIFT
4.653

PIPE BODY PROPERTIES

Material Grade	VST P110EC
Min. Yield Strength	125 ksi
Min. Tensile Strength	135 ksi
Outside Diameter	5.500 in
Inside Diameter	4.778 in
Nominal Area	5.828 sq.in.
Yield Strength	729 kips
Ultimate Strength	787 kips
Min Internal Yield	14,360 psi
*High Collapse	12,090 psi

CONNECTION PROPERTIES

Connection OD	5.701 in
Connection ID	4.719 in
Make up Loss	5.132 in
Box Critical Area	4.083 sq.in.
%PB Section Area	70.1%
Pin Critical Area	4.123 sq.in.
%PB Section Area	70.7%
Yield Strength	510 kips
Parting Load	551 kips
Min Internal Yield	14,360 psi
*High Collapse	12,090 psi
Wk Compression	357 kips
Max Pure Bending	20 °/100 ft

TORQUE DATA ft-lb

min	opt	max
8,700	9,700	10,700

Contact: tech.support@vam-usa.com

Ref. Drawing: SI-PD 100414 Rev.B

Date: 14-Jun-16

Time: 2:31 PM



All information is provided by VAM USA or its affiliates at user's sole risk, without liability for loss, damage or injury resulting from the use thereof; and on an "AS IS" basis without warranty or representation of any kind, whether express or implied, including without limitation any warranty of merchantability, fitness for purpose or completeness. This document and its contents are subject to change without notice. In no event shall VAM USA or its affiliates be responsible for any indirect, special, incidental, punitive, exemplary or consequential loss or damage (including without limitation, loss of use, loss of bargain, loss of revenue, profit or anticipated profit) however caused or arising, and whether such losses or damages were foreseeable or VAM USA or its affiliates was advised of the possibility of such damages.

OD	Weight	Wall Th.	Grade	API Drift	Connection
7 5/8 in.	29.70 lb/ft	0.375 in.	VM 110 HC	6.750 in.	VAM® SLIJ-II

PIPE PROPERTIES

Nominal OD	7.625 in.
Nominal ID	6.875 in.
Nominal Cross Section Area	8.541 sqin.
Grade Type	High Collapse
Min. Yield Strength	110 ksi
Max. Yield Strength	140 ksi
Min. Ultimate Tensile Strength	125 ksi

CONNECTION PROPERTIES

Connection Type	Premium integral semi-flush
Connection OD (nom)	7.711 in.
Connection ID (nom)	6.820 in.
Make-up Loss	4.822 in.
Critical Cross Section	5.912 sqin.
Tension Efficiency	69.2 % of pipe
Compression Efficiency	48.5 % of pipe
Internal Pressure Efficiency	100 % of pipe
External Pressure Efficiency	100 % of pipe

CONNECTION PERFORMANCES

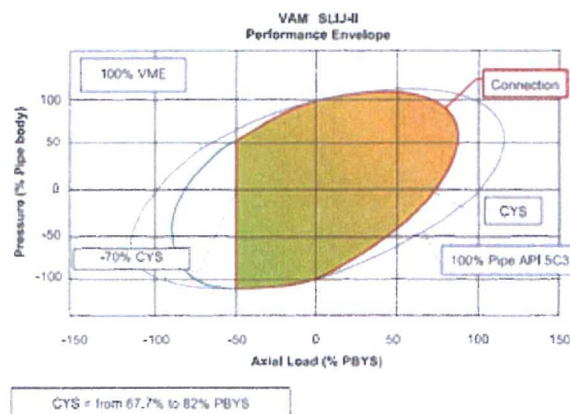
Tensile Yield Strength	651 klb
Compression Resistance	455 klb
Internal Yield Pressure	9470 psi
Uniaxial Collapse Pressure	7890 psi
Max. Bending Capacity	TDB
Max Bending with Sealability	20 °/100 ft

FIELD TORQUE VALUES

Min. Make-up torque	11300 ft.lb
Opti. Make-up torque	12600 ft.lb
Max. Make-up torque	13900 ft.lb

VAM® SLIJ-II is a semi-flush integral premium connection for all casing applications. It combines a near flush design with high performances in tension, compression and gas sealability.

VAM® SLIJ-II has been validated according to the most stringent tests protocols, and has an excellent performance history in the world's most prolific HPHT wells.



Do you need help on this product? - Remember no one knows VAM® like VAM

canada@vamfieldservice.com
usa@vamfieldservice.com
mexico@vamfieldservice.com
brazil@vamfieldservice.com

uk@vamfieldservice.com
dubai@vamfieldservice.com
nigeria@vamfieldservice.com
angola@vamfieldservice.com

china@vamfieldservice.com
baku@vamfieldservice.com
singapore@vamfieldservice.com
australia@vamfieldservice.com

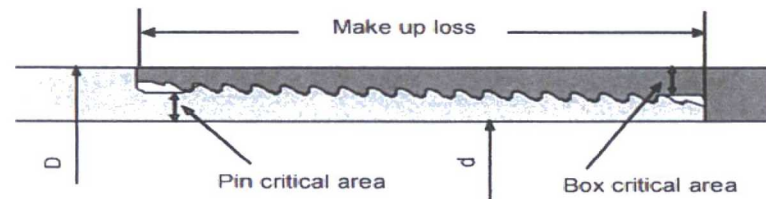
Over 140 VAM® Specialists available worldwide 24/7 for Rig Site Assistance

Other Connection Data Sheets are available at www.vamservices.com

Vallourec Group



FLUSHMAX-III Connection Data Sheet

**Pipe Body**

	Imperial		S.I.	
Grade	P110		P110	
Pipe OD (D)	7 5/8	in	193.68	mm
Weight	29.7	lb/ft	44.25	kg/m
Actual weight	29.0	lb/ft	43.26	kg/m
Wall thickness (t)	0.375	in	9.53	mm
Pipe ID (d)	6.875	in	174.63	mm
Pipe body cross section	8.537	in ²	5,508	mm ²
Drift Dia.	6.750	in	171.45	mm

Connection

Box OD (W)	7.625	in	193.68	mm
PIN ID	6.875	in	174.63	mm
Pin critical area	4.420	in ²	2,852	mm ²
Box critical area	4.424	in ²	2,854	mm ²
Joint load efficiency	60	%	60	%
Make up loss	3.040	in	77.22	mm
Thread taper	1/16 (3/4 in per ft)			
Number of threads	5 thread per in.			

Connection Performance Properties

Tensile Yield load	563.4	kips	2,506	kN
M.I.Y.P.	7,574	psi	52.2	MPa
Collapse strength	5,350	psi	36.9	MPa

Note

M.I.Y.P. = Minimum Internal Yield Pressure of the connection

Torque Recommended

Min.	8,700	ft-lb	11,700	N-m
Opti.	9,700	ft-lb	13,100	N-m
Max.	10,700	ft-lb	14,500	N-m
Operational Max.	23,600	ft-lb	32,000	N-m

Note : Operational Max. torque can be applied for high torque application

Exhibit 1a

EOG Resources 5M BOPE

1. Cameron 2 1/16" 10,000 PSI WP Gate Valve
2. 4 1/16" 10,000 PSI WP Manual Choke
3. Cameron 4 1/16" 10,000 PSI WP Manual Valve
4. 8" OD x 4" ID 10,000 PSI WP Flex Choke Line
5. Cameron 4 1/16" 10,000 PSI WP Manual Valve & Pressure Gauge on Pressure Block
6. 10,000 PSI WP Hyrdaulic Choke Valve
7. 8" Expansion Chamber
8. LP Butterfly Valve
9. LP Valve
10. 4" Panic Line
11. 6" Butterfly Valve
12. 10-3/4" Butterfly Valve
13. 6" Butterfly Valve

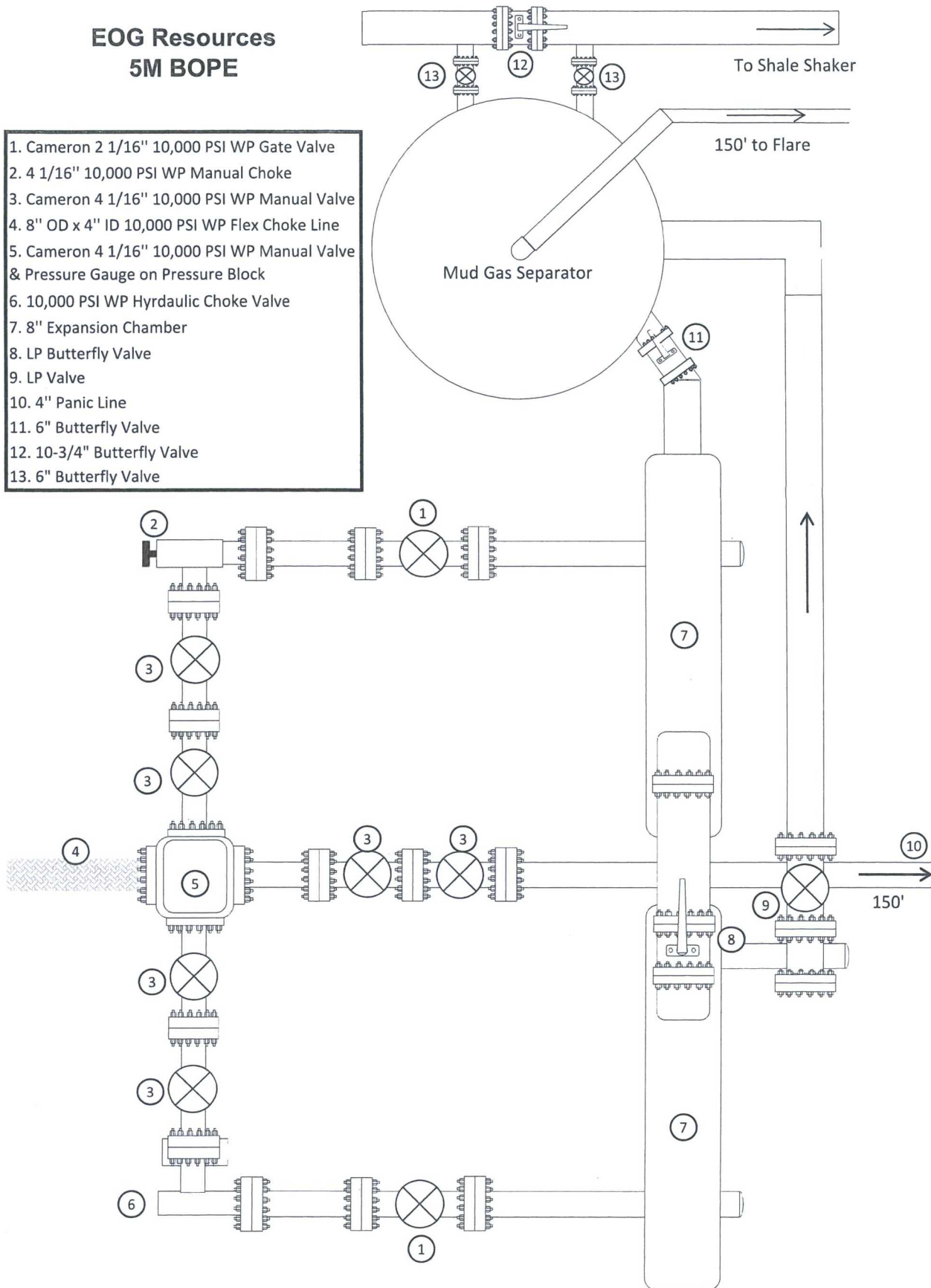


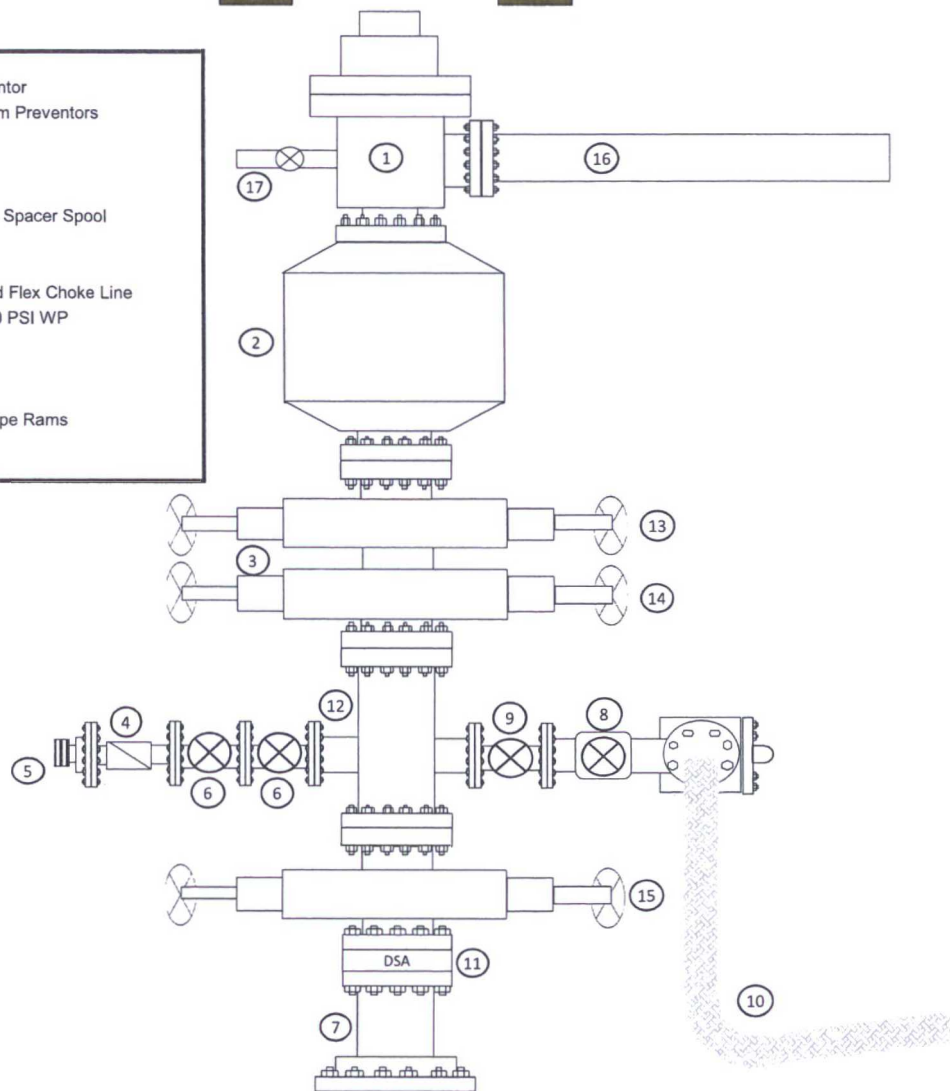
Exhibit 1

EOG Resources

5M BOPE

Rig Floor

1. 13 5/8" Rotating Head
2. NOV 13 5/8" 5,000 PSI WP GK Annular Preventor
3. 13 5/8" Cameron Type "U" 10,000 PSI WP Ram Preventors
4. 2 1/16" - 10,000 PSI WP Check Valve
5. 10,000 PSI WP - 1502 Union to kill line
6. 2 1/16" - 10,000 PSI WP Manual Valves
7. 13 5/8" 3,000 PSI WP x 13 5/8" 5,000 PSI WP Spacer Spool
8. 4 1/16" 10,000 PSI WP HCR Valve
9. 4 1/16" 10,000 PSI WP Manual Valve
10. 6" OD x 3" ID 10,000 PSI WP Steel Armoured Flex Choke Line
11. DSA - 13 5/8" 10,000 PSI WP x 13 5/8" 5,000 PSI WP
12. Mud Cross - 13 5/8" 10,000 PSI WP
13. Blind Rams
14. Pipe Rams
15. 13 5/8" Cameron Type "U" 10,000 PSI WP Pipe Rams
16. Flow Line
17. 2" Fill Line



Manufacturer: Midwest Hose & Specialty

Serial Number: SN#90067

Length: 35'

Size: OD = 8" ID = 4"

Ends: Flanges Size: 4-1/16"

WP Rating: 10,000 psi Anchors required by manufacturer: No

M I D W E S T
HOSE AND SPECIALTY INC.

INTERNAL HYDROSTATIC TEST REPORT			
Customer: CACTUS		P.O. Number: RIG #123 Asset # M10761	
HOSE SPECIFICATIONS			
Type: CHOKER LINE		Length: 35'	
I.D. 4" INCHES		O.D. 8" INCHES	
WORKING PRESSURE 10,000 PSI	TEST PRESSURE 15,000 PSI		BURST PRESSURE PSI
COUPLINGS			
Type of End Fitting 4 1/16 10K FLANGE			
Type of Coupling: SWEDGED		MANUFACTURED BY MIDWEST HOSE & SPECIALTY	
PROCEDURE			
<i>Hose assembly pressure tested with water at ambient temperature.</i>			
TIME HELD AT TEST PRESSURE 1 MIN.		ACTUAL BURST PRESSURE: 0 PSI	
COMMENTS: SN#90067 M10761 Hose is covered with stainless steel armour cover and wrapped with fire resistant vermiculite coated fiberglass insulation rated for 1500 degrees complete with lifting eyes			
Date: 6/6/2011	Tested By: BOBBY FINK		Approved: MENDI JACKSON



Midwest Hose
& Specialty, Inc.

Internal Hydrostatic Test Graph

Customer: CACTUS

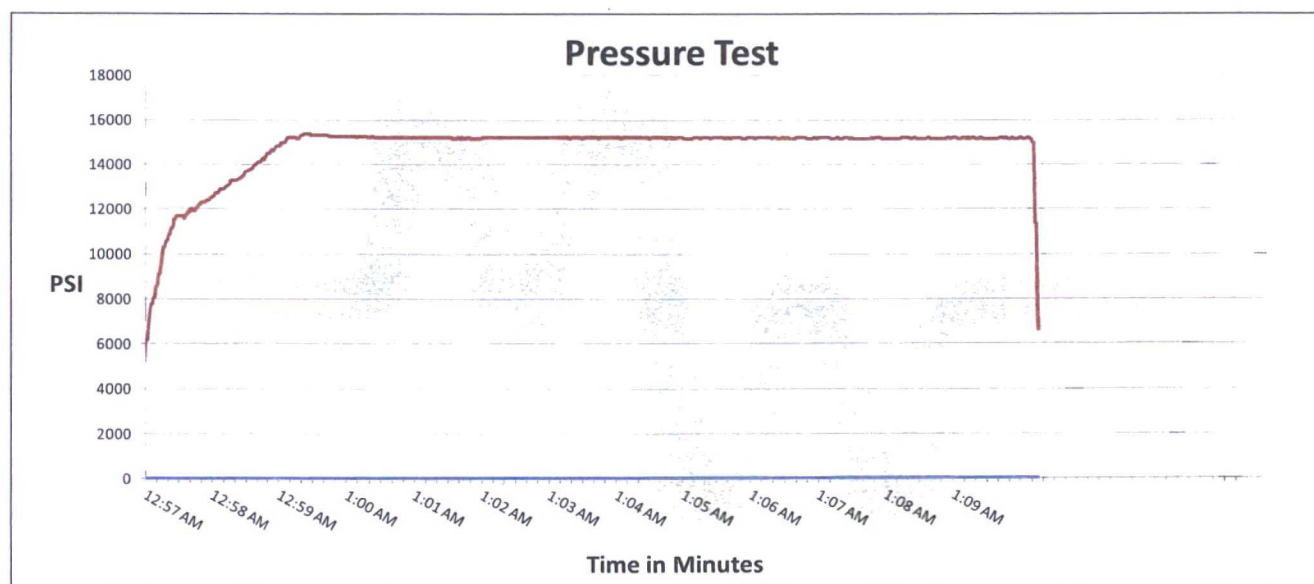
SALES ORDER# 90067

Hose Specifications

<u>Hose Type</u>	<u>Length</u>
C & K	35'
<u>I.D.</u>	<u>O.D.</u>
4"	8"
<u>Working Pressure</u>	<u>Burst Pressure</u>
10000 PSI	Standard Safety Multiplier Applies

Verification

<u>Type of Fitting</u>	<u>Coupling Method</u>
4 1/16 10K	Swage
<u>Die Size</u>	<u>Final O.D.</u>
6.62"	6.68"
<u>Hose Serial #</u>	<u>Hose Assembly Serial #</u>
	90067



Test Pressure
15000 PSI

Time Held at Test Pressure
11 1/4 Minutes

Actual Burst Pressure

Peak Pressure
15439 PSI

Comments: Hose assembly pressure tested with water at ambient temperature.

Tested By: Bobby Fink

Approved By: Mendi Jackson

Bobby Fink

Mendi Jackson

Exhibit 4
EOG Resources
Orrtanna 20 Fed #707H

Well Site Diagram

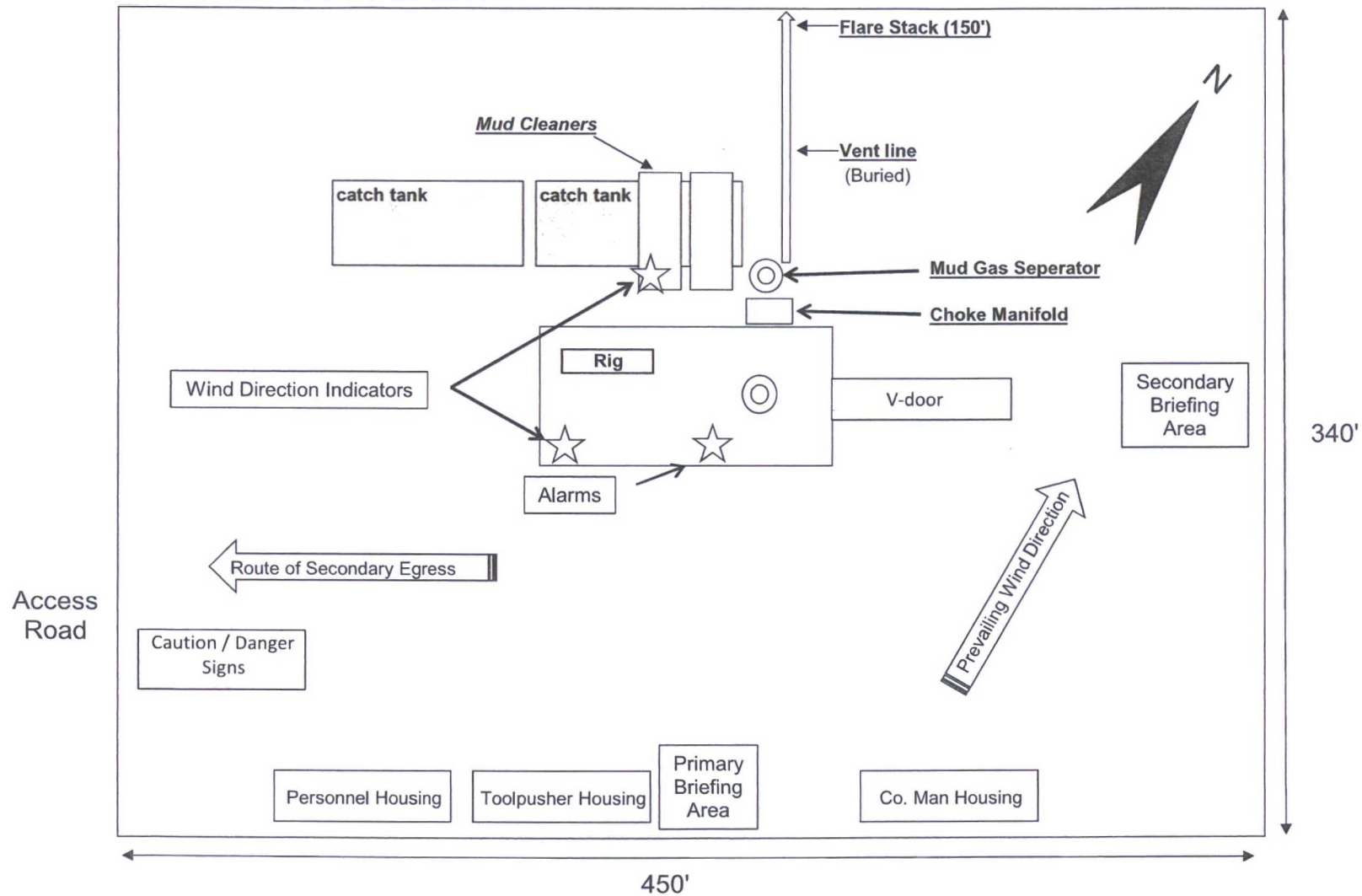
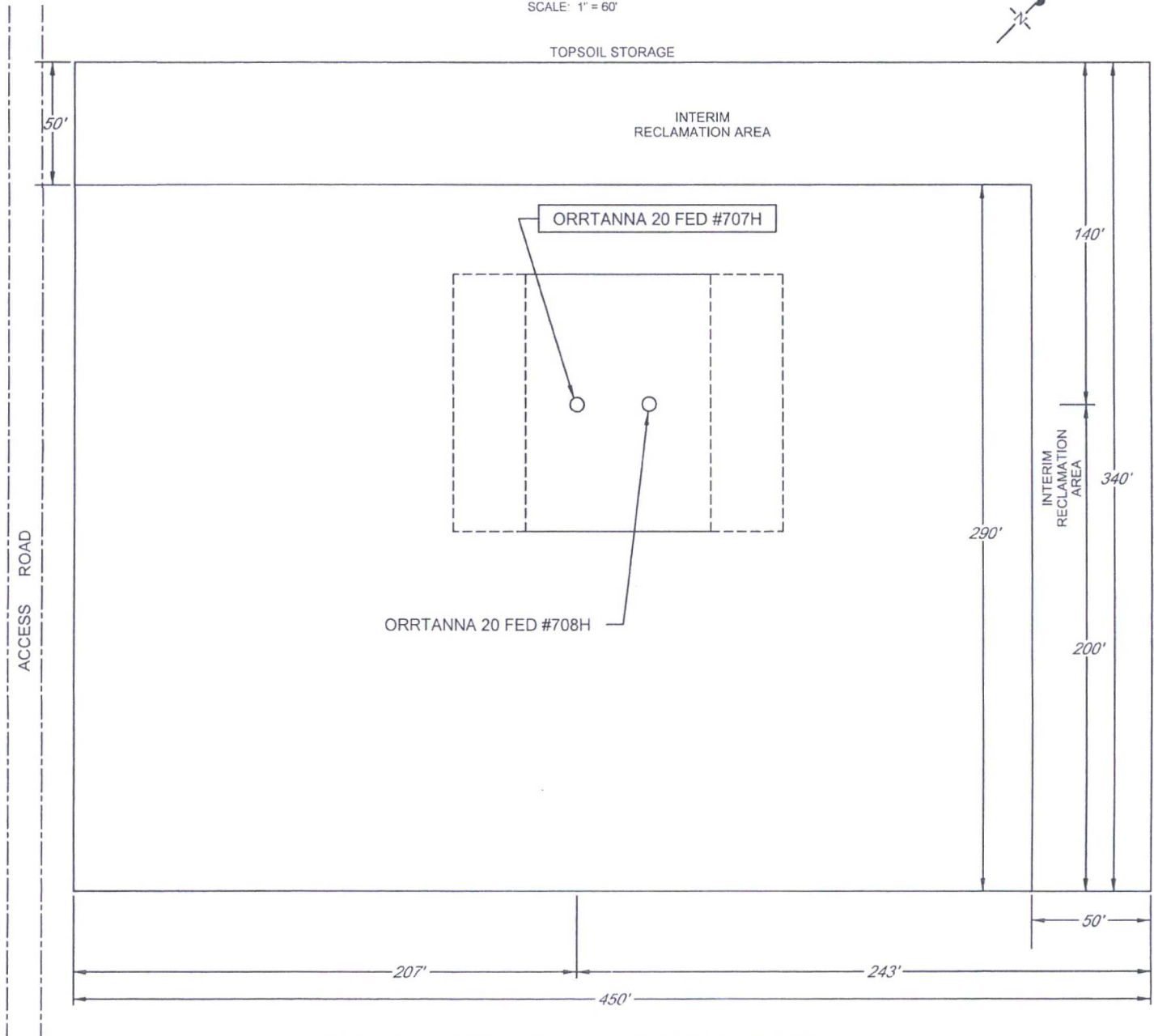


EXHIBIT 2C
RECLAMATION AND FACILITY DIAGRAM - PRODUCTION FACILITIES DIAGRAM

SECTION 20, TOWNSHIP 26-S, RANGE 33-E, N.M.P.M.
LEA COUNTY, NEW MEXICO

DETAIL VIEW
SCALE: 1" = 60'



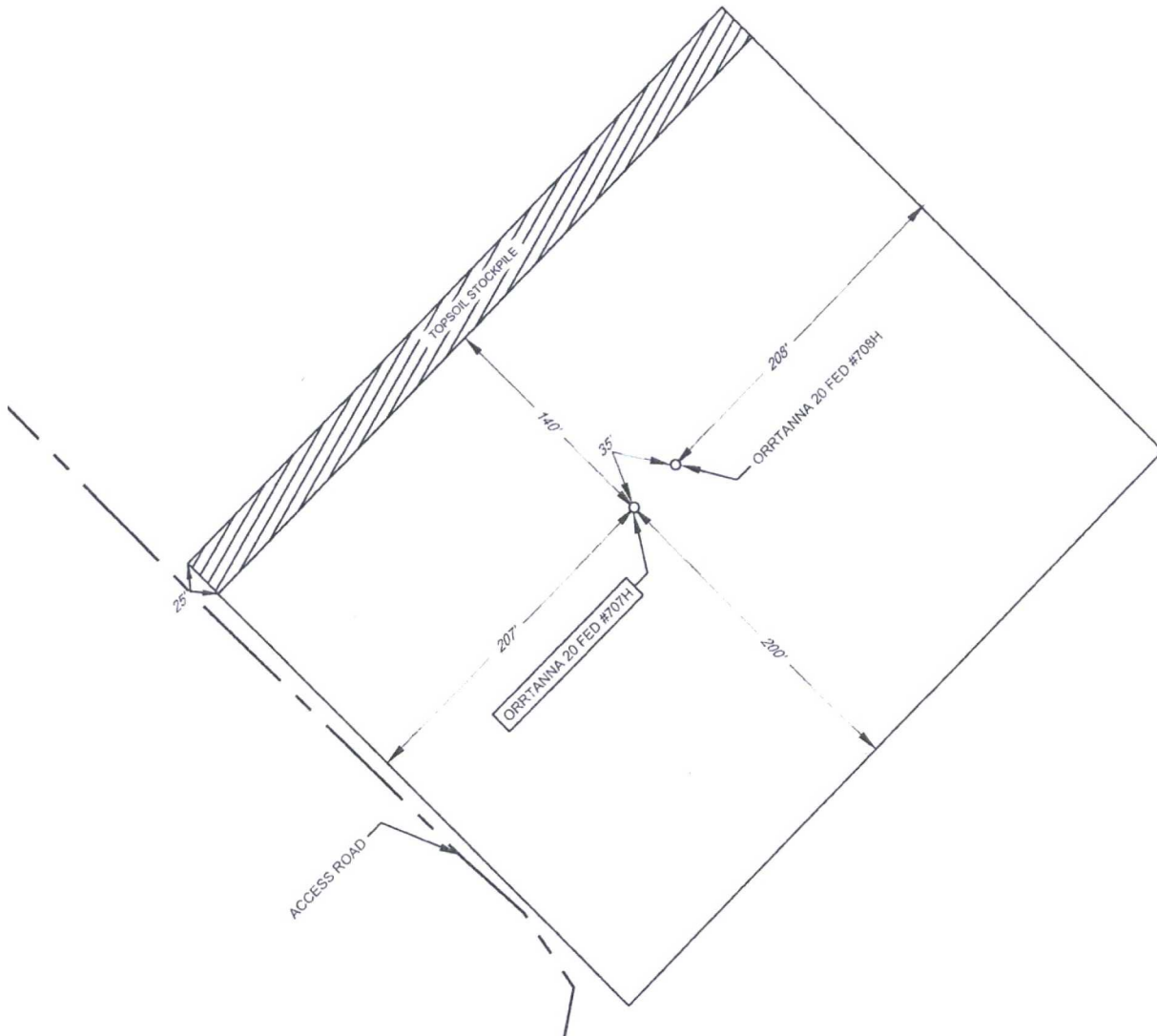
LEASE NAME & WELL NO.: ORRTANNA 20 FED #707H
#707H LATITUDE N 32.0237521 #707H LONGITUDE W 103.5867875



EXHIBIT 2B

SECTION 20, TOWNSHIP 26-S, RANGE 33-E, N.M.P.M.
LEA COUNTY, NEW MEXICO

DETAIL VIEW
SCALE: 1" = 100'



LEASE NAME & WELL NO.: ORRTANNA 20 FED #707H
#707H LATITUDE N 32.0237521 #707H LONGITUDE W 103.5867875

LEGEND

SECTION LINE



SCALE: 1" = 100'
0' 50' 100'

ALL BEARINGS, DISTANCES, AND COORDINATE VALUES CONTAINED HEREON ARE GRID BASED UPON THE NEW MEXICO STATE PLANE COORDINATE SYSTEM, EAST ZONE OF THE NORTH AMERICAN DATUM 1927, U.S. SURVEY FEET

THIS PROPOSED PAD SITE LOCATION SHOWN HEREON HAS BEEN SURVEYED ON THE GROUND UNDER MY SUPERVISION AND PREPARED ACCORDING TO THE EVIDENCE FOUND AT THE TIME OF SURVEY, AND DATA PROVIDED BY EOG RESOURCES, INC. THIS CERTIFICATION IS MADE AND LIMITED TO THOSE PERSONS OR ENTITIES SHOWN ON THE FACE OF THIS PLAT AND IS NON-TRANSFERABLE. THIS SURVEY IS CERTIFIED FOR THIS TRANSACTION ONLY.



TOPOGRAPHIC
LOYALTY INNOVATION LEGACY

1400 EVERMAN PARKWAY, Ste. 197 • FT. WORTH, TEXAS 76140
TELEPHONE: (817) 744-7512 • FAX (817) 744-7548
2903 NORTH BIG SPRING • MIDLAND, TEXAS 79705
TELEPHONE: (432) 682-1653 OR (800) 767-1653 • FAX (432) 682-1743
WWW.TOPOGRAPHIC.COM

ORIGINAL DOCUMENT SIZE: 8.5" X 11"

\\SURVEY\EOG_MIDLAND\ORRTANNA_20_FED\PLAT_PRODUCT\SLD_ORRTANNA20FED_707H_RLV1.DWG 12/20/15 11:05:44 AM 156w811