

District I
1625 N. French Dr., Hobbs, NM 88240
Phone: (505) 393-6161 Fax: (505) 393-0220
District II
811 S. First St., Artesia, NM 88210
Phone: (505) 748-1283 Fax: (505) 748-9120
District III
1000 Rio Brazos Road, Ariceo, NM 87410
Phone: (505) 334-6178 Fax: (505) 334-6170
District IV
1250 S. St. Francis Dr., Santa Fe, NM 87505
Phone: (505) 476-3460 Fax: (505) 476-3462

State of New Mexico
Energy, Minerals & Natural Resources Department
OIL CONSERVATION DIVISION
1220 South St. Francis Dr.
Santa Fe, NM 87505

Form C-102
Revised August 1, 2011
Submit one copy to appropriate
District Office

☐ AMENDED REPORT

WELL LOCATION AND ACREAGE DEDICATION PLAT

API Number 30-025-43627	Pool Code 97929	Pool Name WC-025 G-06 S213326D;BONE SPRING
Property Code 316337	Property Name DAGGER STATE COM	Well Number 505H ✓
OGRID No. 785	Operator Name AMTEX ENERGY, INC.	Elevation 3790.1'

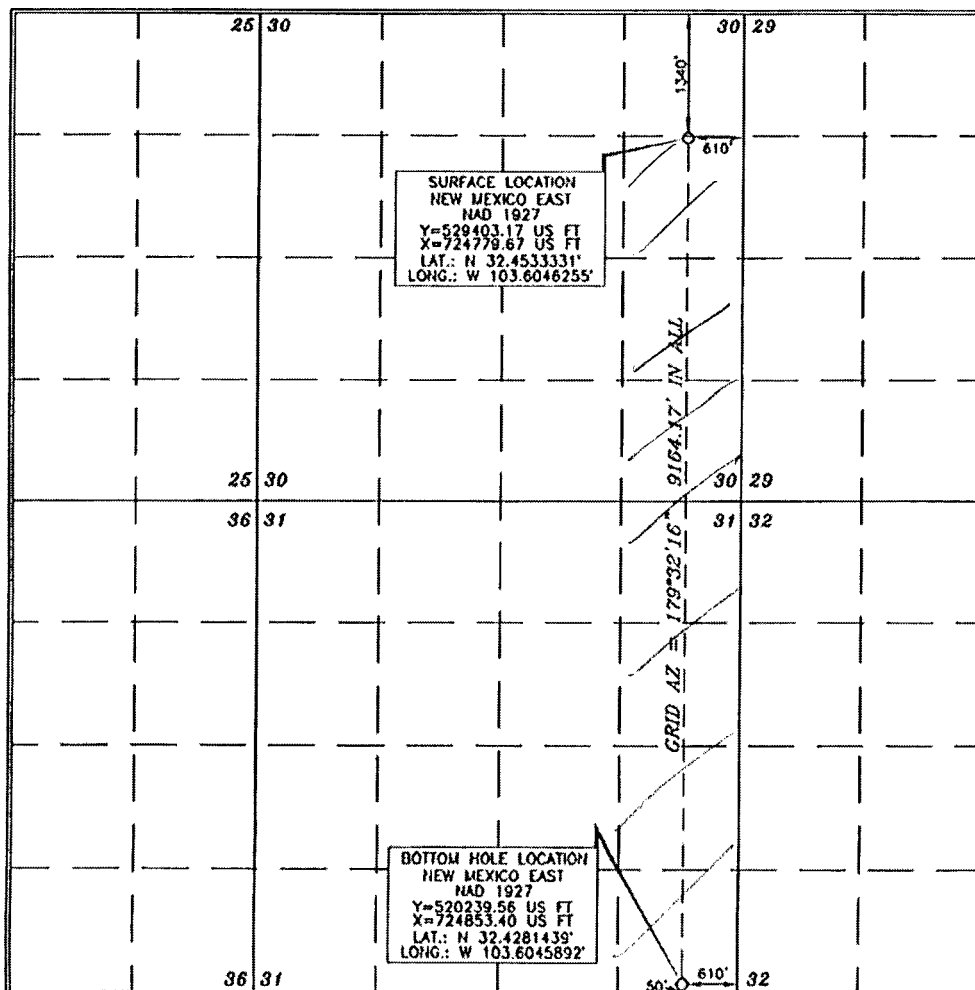
Surface Location

UL or lot no.	Section	Township	Range	Lot Idn	Feet from the	North/South line	Feet from the	East/West line	County
H	30	21 SOUTH	33 EAST, N.M.P.M.		1340'	NORTH	610'	EAST	LEA

Bottom Hole Location If Different From Surface

UL or lot no.	Section	Township	Range	Lot Idn	Feet from the	North/South line	Feet from the	East/West line	County
P	31	21 SOUTH	33 EAST, N.M.P.M.		50'	SOUTH	610'	EAST	LEA
Dedicated Acres 280.00	Joint or Infill	Consolidation Code	Order No.						

No allowable will be assigned to this completion until all interests have been consolidated or a non-standard unit has been approved by the division.



OPERATOR CERTIFICATION

I hereby certify that the information contained herein is true and complete to the best of my knowledge and belief, and that this organization either owns a working interest or undivided mineral interest in the land including the proposed bottom hole location or has a right to drill this well at this location pursuant to a contract with an owner of such a mineral or working interest or to a voluntary pooling agreement or a compulsory pooling order heretofore entered by the division.

William J. Savage 2/2/17
Signature Date

William J. Savage, President

Printed Name

bsavage@amtexresources.com

E-mail Address

SURVEYOR CERTIFICATION

I hereby certify that the well location shown on this plat was plotted from field notes of actual surveys made by me or under my supervision, and that the same is true and correct to the best of my belief.

TERRY J. ASE
15079
JUNE 3, 2016
Date of Survey

Signature and Seal of
Professional Surveyor

Terry J. ASE 1/5/2017
Certificate Number 15079