

District I
1625 N. French Dr., Hobbs, NM 88240
Phone: (575) 393-6161 Fax: (575) 393-0720
District II
811 S. First St., Artesia, NM 88210
Phone: (575) 748-1283 Fax: (575) 748-9220
District III
1000 Rio Bravo Road, Artesia, NM 87410
Phone: (505) 334-6178 Fax: (505) 334-6170
District IV
1220 S. St. Francis Dr., Santa Fe, NM 87505
Phone: (505) 476-3460 Fax: (505) 476-3462

State of New Mexico
Energy, Minerals & Natural Resources Department
OIL CONSERVATION DIVISION
1220 South St. Francis Dr.
Santa Fe, NM 87505

Form C-102
Revised August 1, 2011
Submit one copy to appropriate
District Office

AMENDED REPORT

WELL LOCATION AND ACREAGE DEDICATION PLAT

API Number 30-025-43631	Pool Code 97929	Pool Name WC-025 G-06 S213326D;BONE SPRING
Property Code 316337	Property Name DAGGER STATE COM	Well Number 510H ✓
OGRID No. 785	Operator Name AMTEX ENERGY, INC.	Elevation 3825.6'

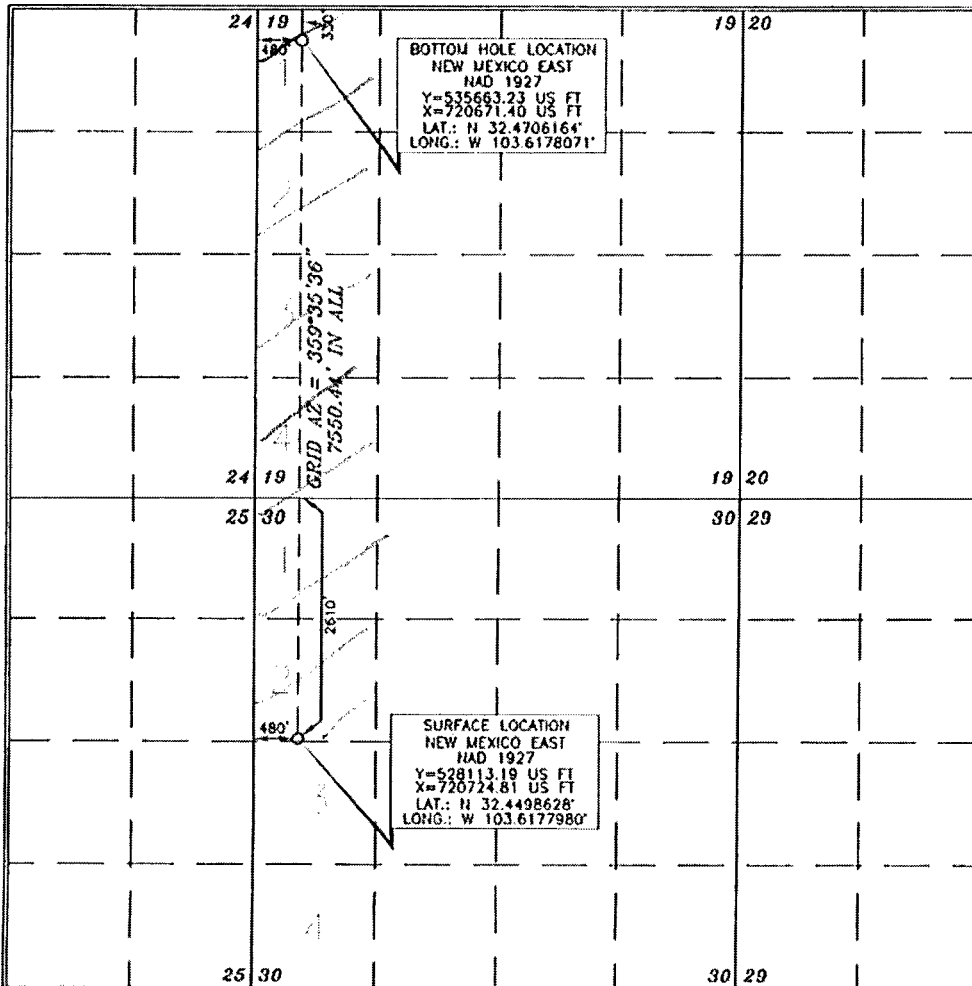
Surface Location

UL or lot no.	Section	Township	Range	Lot Idn	Feet from the	North/South line	Feet from the	East/West line	County
2	30	21 SOUTH	33 EAST, N.M.P.M.		2610'	NORTH	480'	WEST	LEA

Bottom Hole Location If Different From Surface

UL or lot no.	Section	Township	Range	Lot Idn	Feet from the	North/South line	Feet from the	East/West line	County
1	19	21 SOUTH	33 EAST, N.M.P.M.		330'	NORTH	480'	WEST	LEA
Dedicated Acres 216.52		Joint or Infill	Consolidation Code	Order No.					

No allowable will be assigned to this completion until all interests have been consolidated or a non-standard unit has been approved by the division.



OPERATOR CERTIFICATION
I hereby certify that the information contained herein is true and complete to the best of my knowledge and belief, and that this organization either owns a working interest or mineral interest in the land including the proposed bottom hole location or has a right to drill this well at this location pursuant to a contract with an owner of such a mineral or working interest, or to a voluntary pooling agreement or a compulsory pooling order hereby entered by the division.
William J. Savage 2/2/17
Signature Date
William J. Savage, President
Printed Name
bsavage@amtexresources.com
E-mail Address

SURVEYOR CERTIFICATION
I hereby certify that the well location shown on this plat was plotted from field notes of actual surveys made by me or under my supervision, and that the same is true and correct to the best of my belief.
JERRY J. ASH
15079
JUNE 8, 2016
Date of Survey
Signature and Seal of Professional Surveyor
Jerry J. Ash 6/21/2016
Certificate Number 15079
WO# 160608WL-1 (KA)