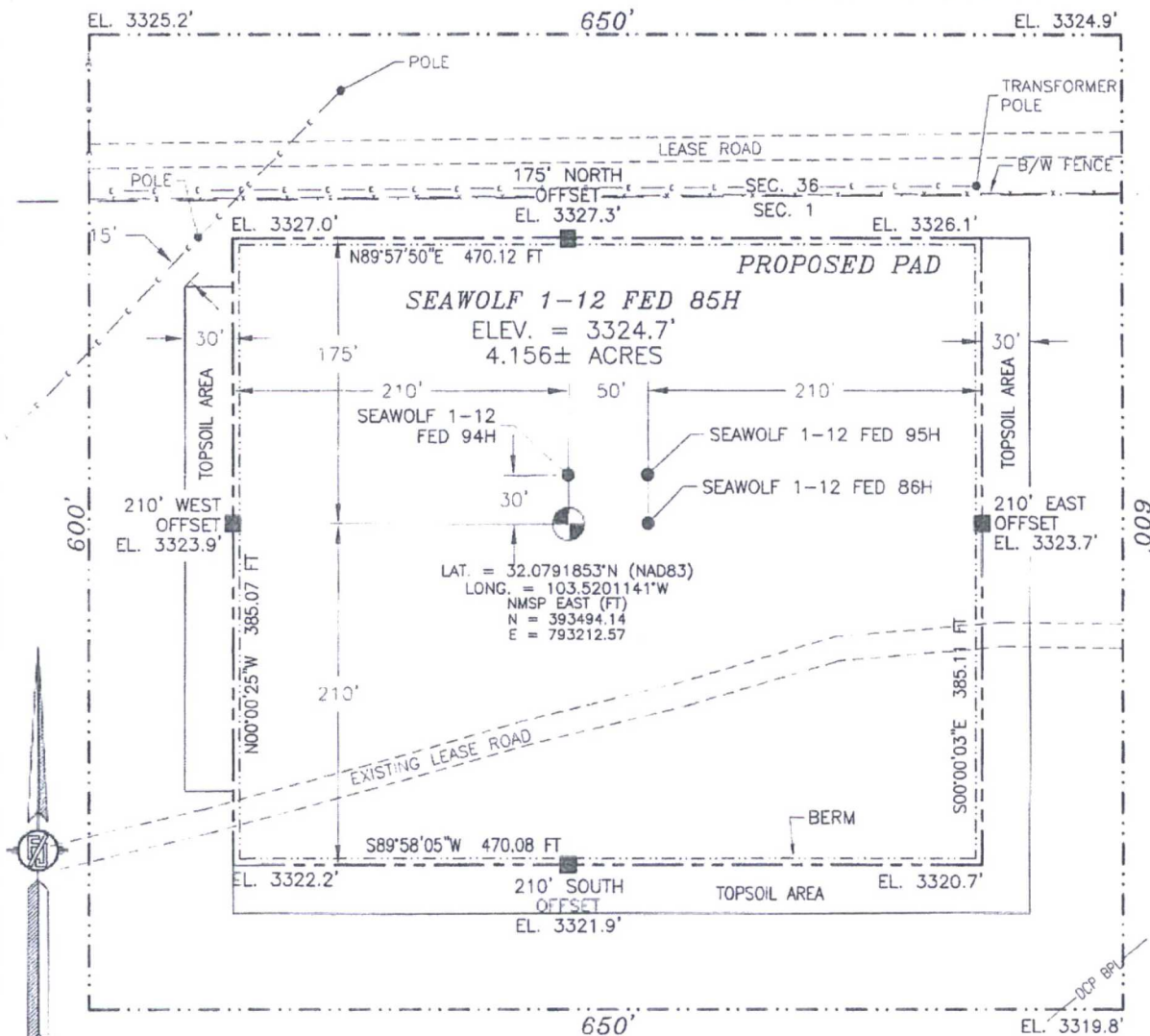


SECTION 1, TOWNSHIP 26 SOUTH, RANGE 33 EAST, N.M.P.M.
LEA COUNTY, STATE OF NEW MEXICO
SITE MAP

NOTE: LATITUDE AND LONGITUDE COORDINATES ARE SHOWN USING THE NORTH AMERICAN DATUM OF 1983 (NAD83) LISTED NEW MEXICO STATE PLANE EAST COORDINATES ARE GRID (NAD83). BASIS OF BEARING AND DISTANCES USED ARE NEW MEXICO STATE PLANE EAST COORDINATES MODIFIED TO THE SURFACE. VERTICAL DATUM NAVD88.



010 50 100 200

SCALE 1" = 100'

DIRECTIONS TO LOCATION

FROM THE INTERSECTION OF STATE HIGHWAY 128 AND CR 2 (BATTLE AXE ROAD) GO SOUTH ON CR 2 APPROX. 11.8 MILES, ROAD TURNS WEST AND FOLLOW ROAD SOUTHWEST GO BY RANCH HOUSE (GO APPROX. 2.0 MILES) BEFORE CATTLE GUARD TURN LEFT (EAST) ON EXISTING LEASE ROAD, FOLLOW ROAD 600', ROAD TURNS RIGHT (SOUTH), FOLLOW ROAD 450' SOUTH THEN ROAD TURNS LEFT (EAST), GO EAST APPROX. 300' TO THE SOUTHWEST PAD CORNER FOR THIS LOCATION.

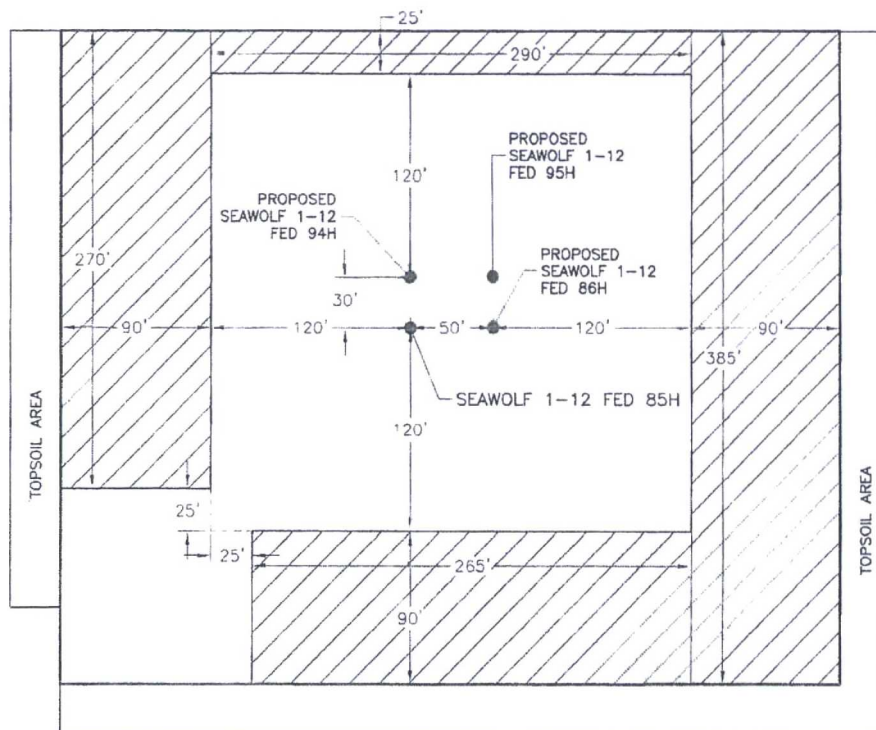
DEVON ENERGY PRODUCTION COMPANY, L.P.
SEAWOLF 1-12 FED 85H
LOCATED 200 FT. FROM THE NORTH LINE
AND 800 FT. FROM THE EAST LINE OF
SECTION 1, TOWNSHIP 26 SOUTH,
RANGE 33 EAST, N.M.P.M.
LEA COUNTY, STATE OF NEW MEXICO


OCTOBER 4, 2016

SURVEY NO. 4803A

MADRON SURVEYING, INC. 301 SOUTH CANAL CARLSBAD, NEW MEXICO
(575) 234-3341

**PROPOSED INTERIM SITE RECLAMATION
FOR SEAWOLF 1-12 FED 85H
SECTION 1, TOWNSHIP 26 SOUTH, RANGE 33 EAST, N.M.P.M.
LEA COUNTY, STATE OF NEW MEXICO**



 DENOTES
RECLAMATION AREA
2.070± ACRES RECLAMATION AREA

010 50 100 200
SCALE 1" = 100'

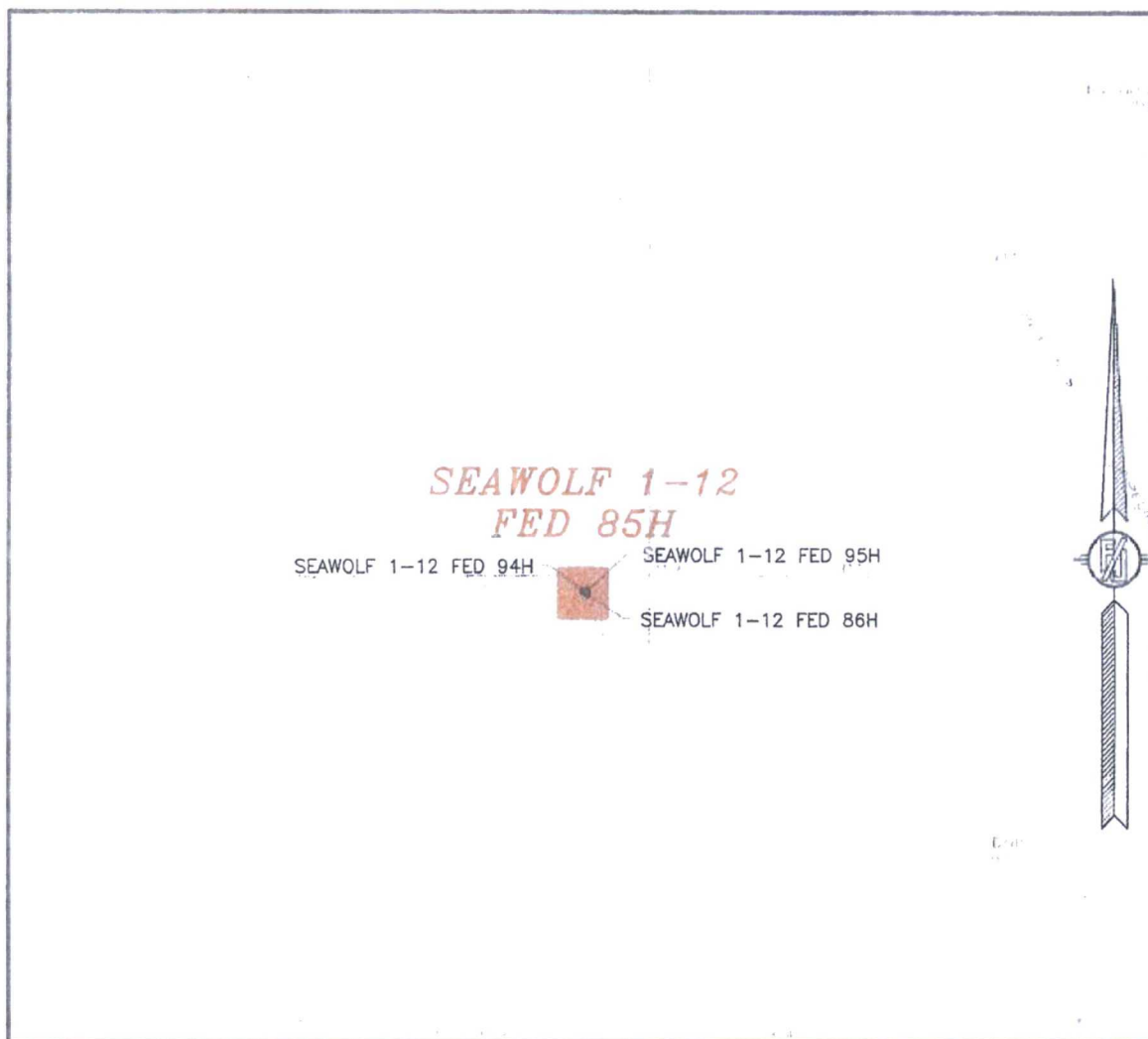
DEVON ENERGY PRODUCTION COMPANY, L.P.
SEAWOLF 1-12 FED 85H
 LOCATED 200 FT. FROM THE NORTH LINE
 AND 800 FT. FROM THE EAST LINE OF
 SECTION 1, TOWNSHIP 26 SOUTH,
 RANGE 33 EAST, N.M.P.M.
 LEA COUNTY, STATE OF NEW MEXICO

OCTOBER 4, 2016

SURVEY NO. 4803A

MADRON SURVEYING, INC. 301 SOUTH CANAL CARLSBAD, NEW MEXICO
(575) 234-3341

SECTION 1, TOWNSHIP 26 SOUTH, RANGE 33 EAST, N.M.P.M.
LEA COUNTY, STATE OF NEW MEXICO
LOCATION VERIFICATION MAP



USGS QUAD MAP:
PADUCA BREAKS EAST

NOT TO SCALE

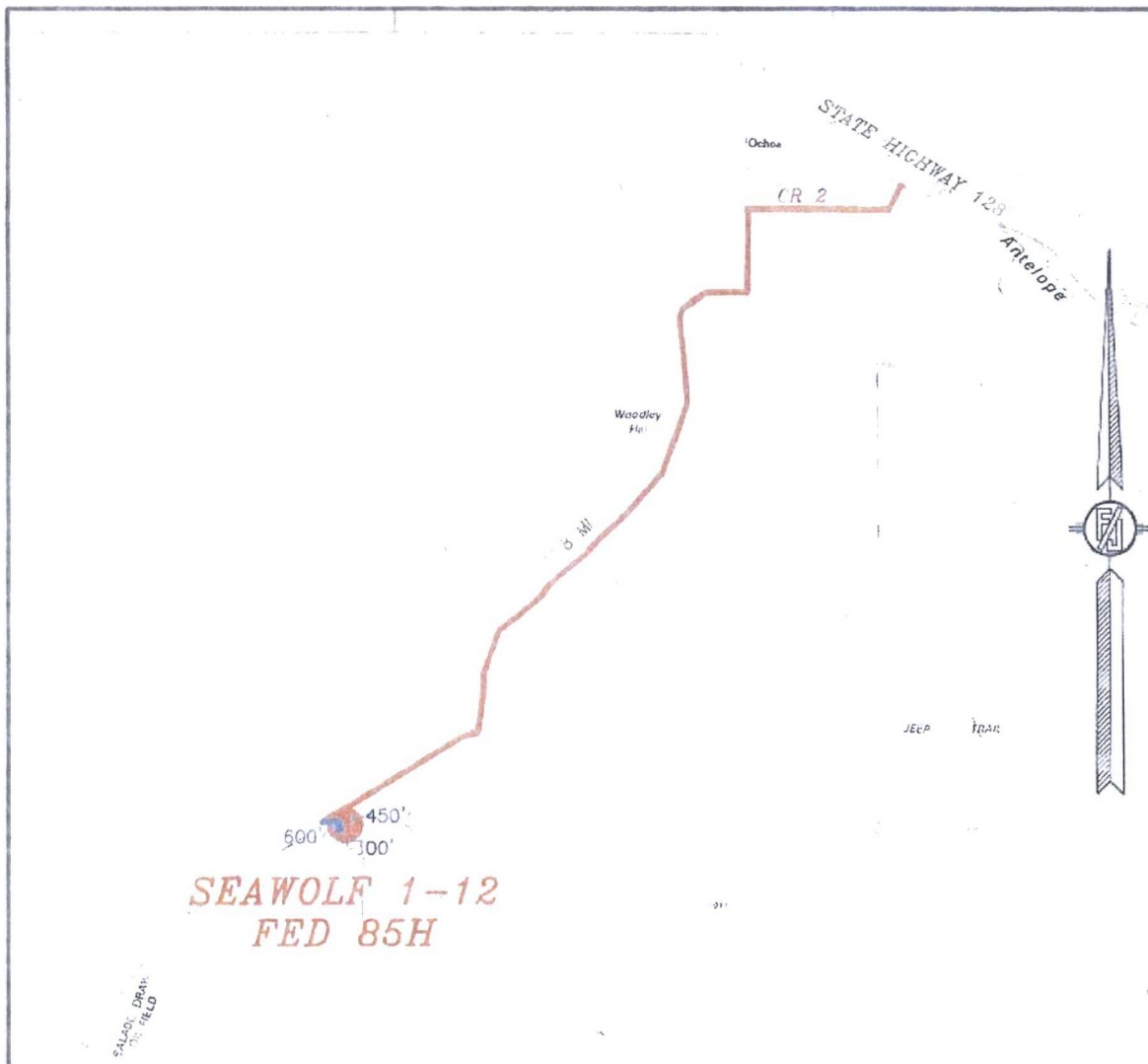
DEVON ENERGY PRODUCTION COMPANY, L.P.
SEAWOLF 1-12 FED 85H
LOCATED 200 FT. FROM THE NORTH LINE
AND 800 FT. FROM THE EAST LINE OF
SECTION 1, TOWNSHIP 26 SOUTH,
RANGE 33 EAST, N.M.P.M.
LEA COUNTY, STATE OF NEW MEXICO

OCTOBER 4, 2016

SURVEY NO. 4803A

MADRON SURVEYING, INC. 301 SOUTH CANAL (575) 234-3341 CARLSBAD, NEW MEXICO

SECTION 1, TOWNSHIP 26 SOUTH, RANGE 33 EAST, N.M.P.M.
LEA COUNTY, STATE OF NEW MEXICO
VICINITY MAP



DISTANCES IN MILES

NOT TO SCALE

DEVON ENERGY PRODUCTION COMPANY, L.P.

SEAWOLF 1-12 FED 85H

LOCATED 200 FT. FROM THE NORTH LINE
AND 800 FT. FROM THE EAST LINE OF

SECTION 1, TOWNSHIP 26 SOUTH,

RANGE 33 EAST, N.M.P.M.

LEA COUNTY, STATE OF NEW MEXICO

OCTOBER 4, 2016

DIRECTIONS TO LOCATION

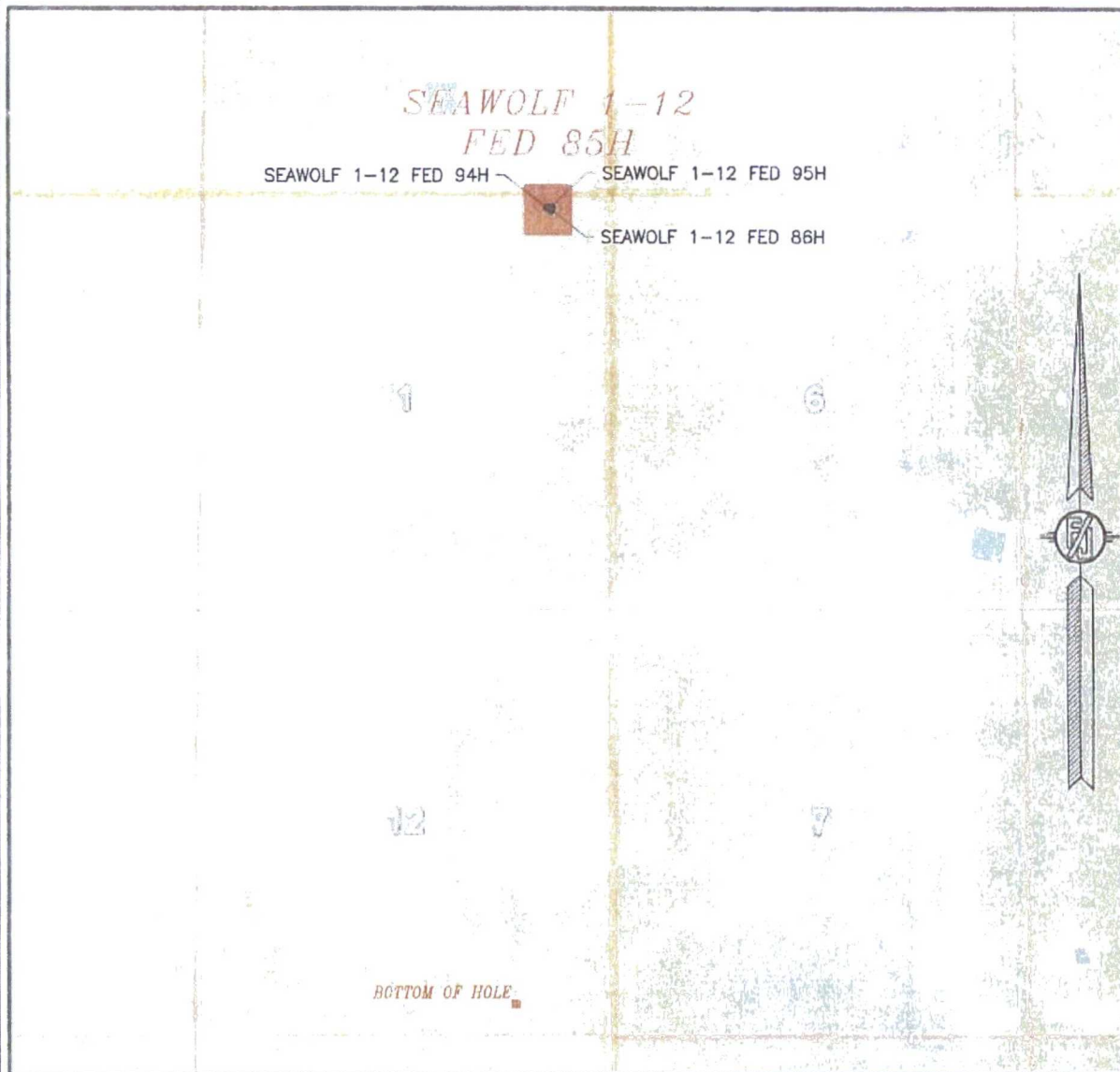
FROM THE INTERSECTION OF STATE HIGHWAY 128 AND CR 2 (BATTLE AXE ROAD) GO SOUTH ON CR 2 APPROX. 11.8 MILES, ROAD TURNS WEST AND FOLLOW ROAD SOUTHWEST GO BY RANCH HOUSE (GO APPROX. 2.0 MILES) BEFORE CATTLE GUARD TURN LEFT (EAST) ON EXISTING LEASE ROAD, FOLLOW ROAD 600', ROAD TURNS RIGHT (SOUTH), FOLLOW ROAD 450' SOUTH THEN ROAD TURNS LEFT (EAST), GO EAST APPROX. 300' TO THE SOUTHWEST PAD CORNER FOR THIS LOCATION.

SURVEY NO. 4803A

MADRON SURVEYING, INC. 301 SOUTH CANAL (575) 234-3341

CARLSBAD, NEW MEXICO

SECTION 1, TOWNSHIP 26 SOUTH, RANGE 33 EAST, N.M.P.M.
LEA COUNTY, STATE OF NEW MEXICO
AERIAL PHOTO



NOT TO SCALE
AERIAL PHOTO:
GOOGLE EARTH
NOVEMBER 2015

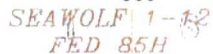
DEVON ENERGY PRODUCTION COMPANY, L.P.
SEAWOLF 1-12 FED 85H
LOCATED 200 FT. FROM THE NORTH LINE
AND 800 FT. FROM THE EAST LINE OF
SECTION 1, TOWNSHIP 26 SOUTH,
RANGE 33 EAST, N.M.P.M.
LEA COUNTY, STATE OF NEW MEXICO

OCTOBER 4, 2016

SURVEY NO. 4803A

MADRON SURVEYING, INC. 301 SOUTH CANAL (575) 234-3341 CARLSBAD, NEW MEXICO

ACCESS AERIAL ROUTE MAP



DEVON ENERGY PRODUCTION COMPANY, L.P.

LOCATED 200 FT. FROM THE NORTH LINE

SECTION 1, TOWNSHIP 26 SOUTH,

LEA COUNTY, STATE OF NEW MEXICO

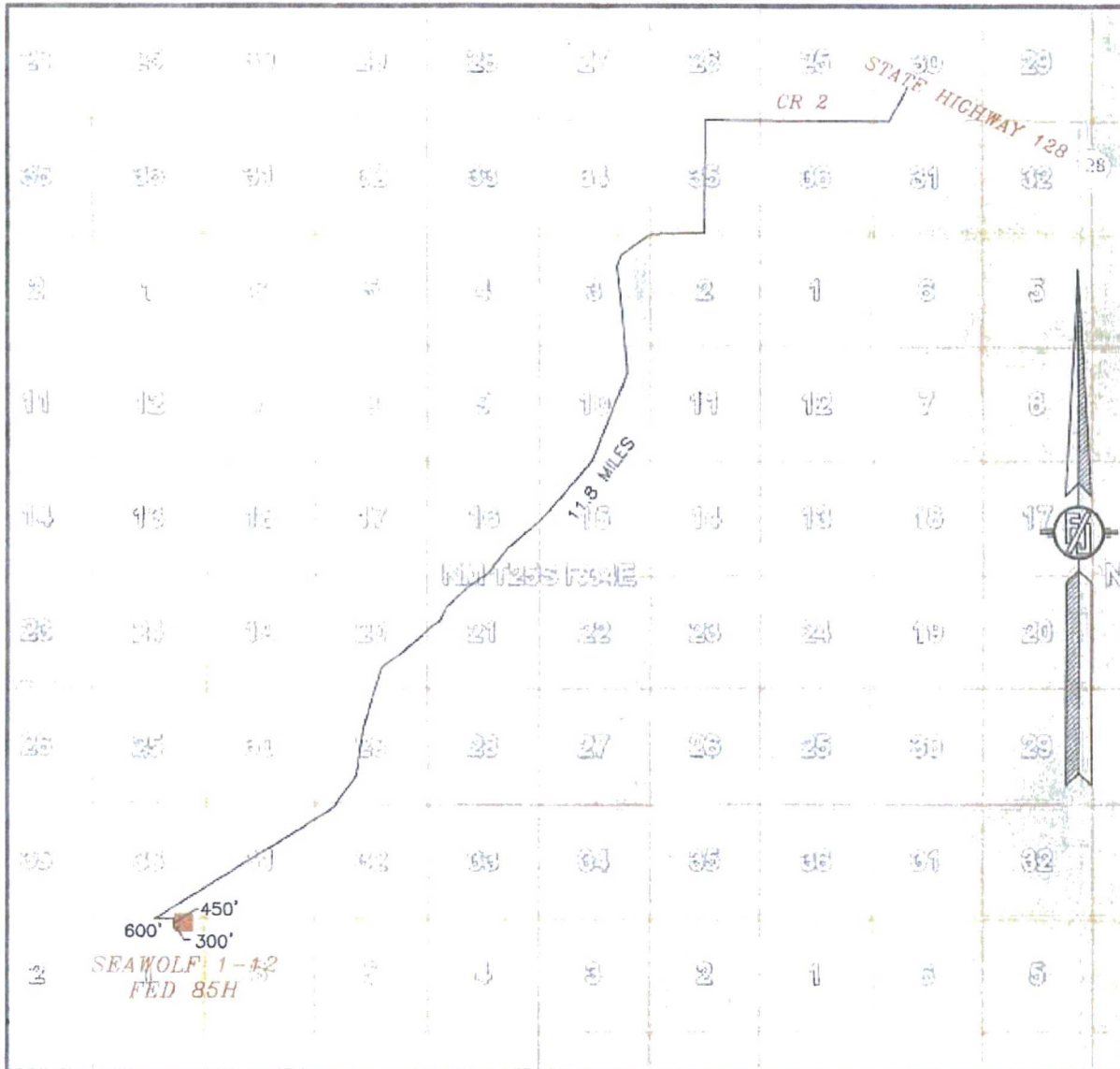
SURVEY NO. 4803A

CARLSBAD, NEW MEXICO

APR 26 2017

RECEIVED

SECTION 1, TOWNSHIP 26 SOUTH, RANGE 33 EAST, N.M.P.M.
LEA COUNTY, STATE OF NEW MEXICO
ACCESS AERIAL ROUTE MAP



NOT TO SCALE
AERIAL PHOTO:
GOOGLE EARTH
NOVEMBER 2015

DEVON ENERGY PRODUCTION COMPANY, L.P.

SEAWOLF 1-12 FED 85H

LOCATED 200 FT. FROM THE NORTH LINE
AND 800 FT. FROM THE EAST LINE OF
SECTION 1, TOWNSHIP 26 SOUTH,
RANGE 33 EAST, N.M.P.M.
LEA COUNTY, STATE OF NEW MEXICO

OCTOBER 4, 2016

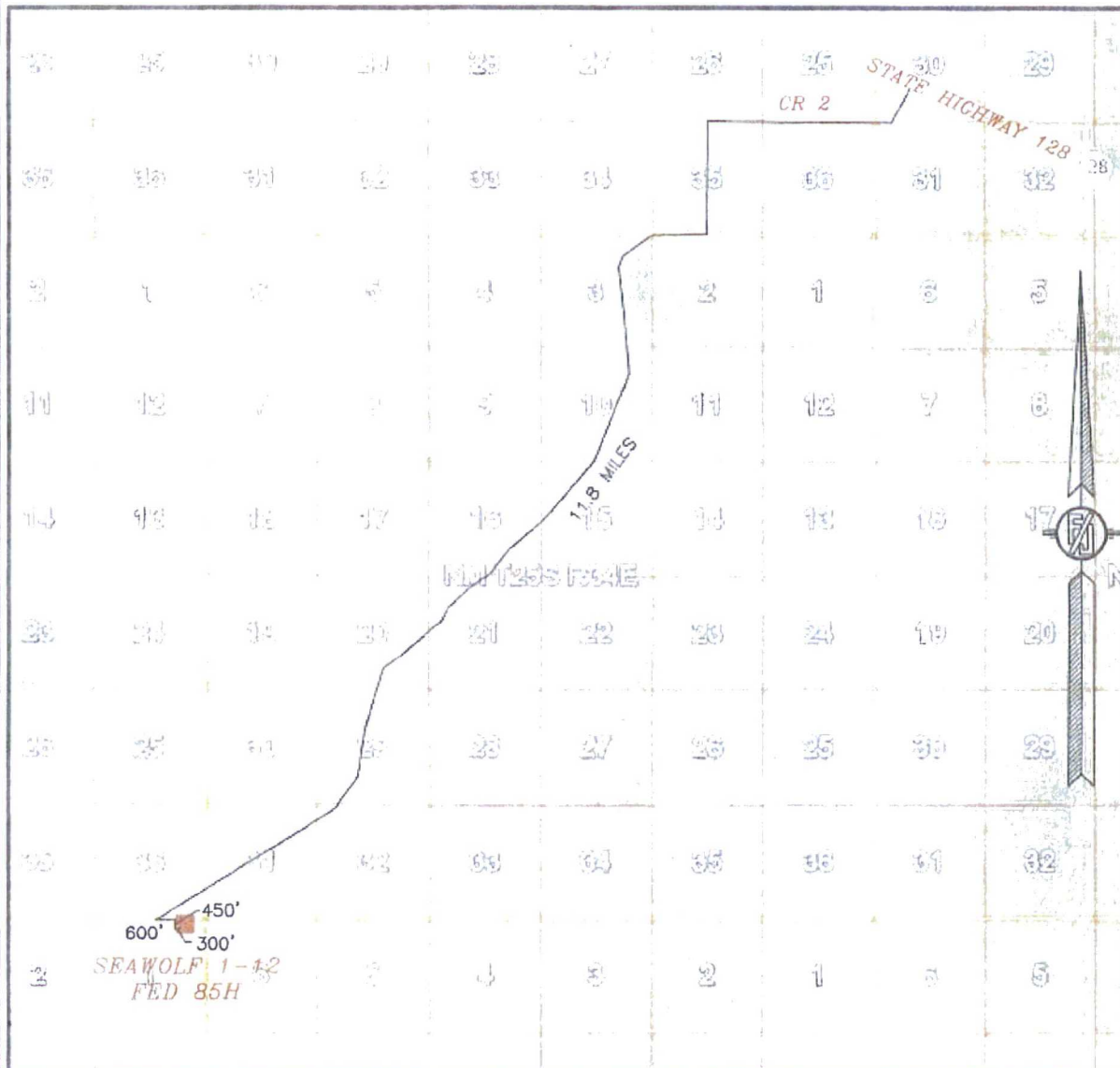
SURVEY NO. 4803A

MADRON SURVEYING, INC. 301 SOUTH CANAL (575) 234-3341 CARLSBAD, NEW MEXICO

APR 26 2017

RECEIVED

SECTION 1, TOWNSHIP 26 SOUTH, RANGE 33 EAST, N.M.P.M.
LEA COUNTY, STATE OF NEW MEXICO
ACCESS AERIAL ROUTE MAP



NOT TO SCALE
AERIAL PHOTO:
GOOGLE EARTH
NOVEMBER 2015

DEVON ENERGY PRODUCTION COMPANY, L.P.
SEAWOLF 1-12 FED 85H

LOCATED 200 FT. FROM THE NORTH LINE
AND 800 FT. FROM THE EAST LINE OF
SECTION 1, TOWNSHIP 26 SOUTH,
RANGE 33 EAST, N.M.P.M.
LEA COUNTY, STATE OF NEW MEXICO

OCTOBER 4, 2016

SURVEY NO. 4803A

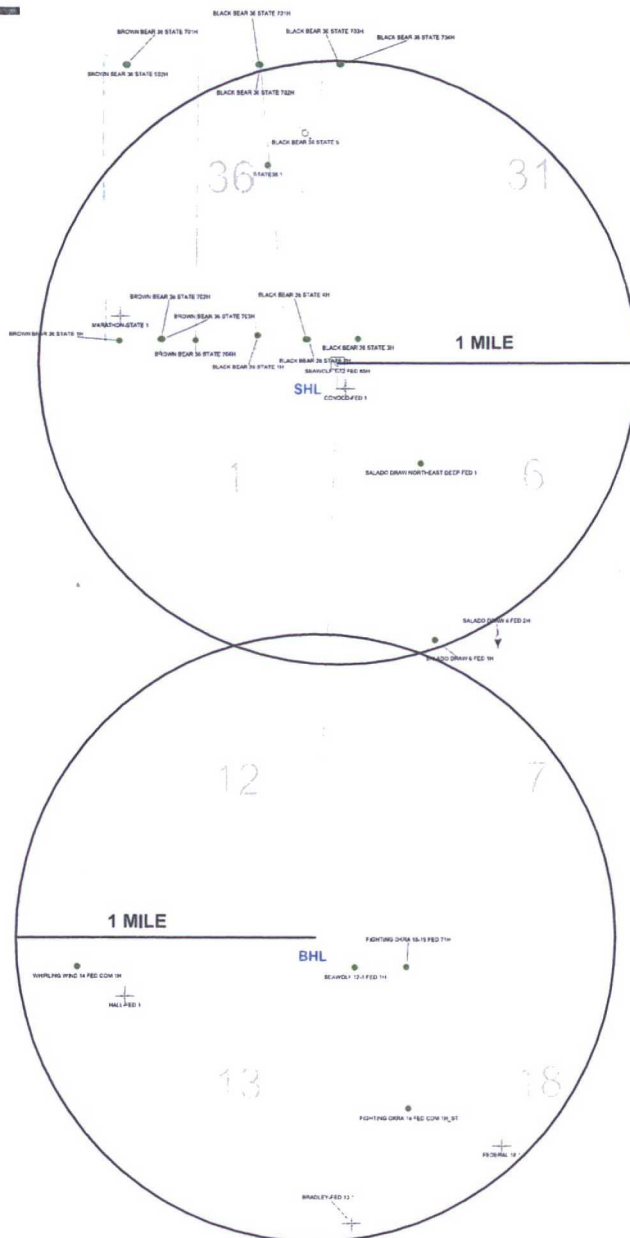
MADRON SURVEYING, INC. 301 SOUTH CANAL (575) 234-3341 CARLSBAD, NEW MEXICO

25S-33E

One Mile Radius Map

Estimated distances to nearest wellbore:

*From SHL: Seawolf 12-1 Fed 1H	175' SE
Seawolf 12-1 Fed 1H	110' E
Conoco-Fed 1	150' E
*From BHL: Seawolf 12-1 Fed 1H	600' E



26S-33E



Permian Basin - Southeast New Mexico

SEAWOLF 1-12 FED 85H

1 Mile Radius Map



POSTED WELL DATA

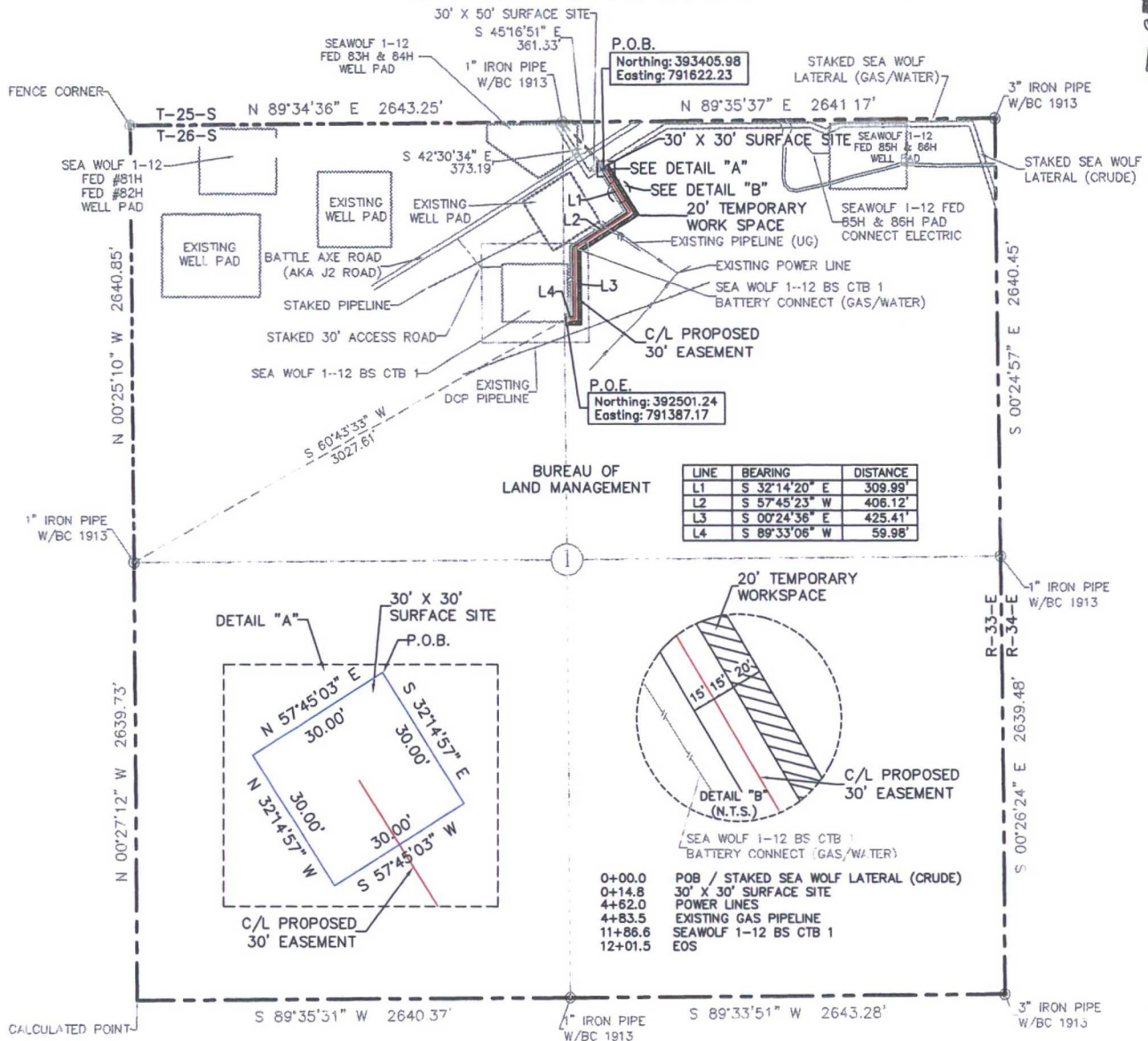
Well Log

- WELL SYMBOLS
- DRY AND ABANDONED WELL
- INJECTION WELL
- OIL PRODUCING WELL
- PROPOSED
- WAITING ON COMPLETION

September 28, 2018

DEVON ENERGY CORPORATION

EXHIBIT "A"
PAGE 1 of 5
SECTION 1, T26S-R33E, N.M.P.M.
LEA COUNTY, NEW MEXICO



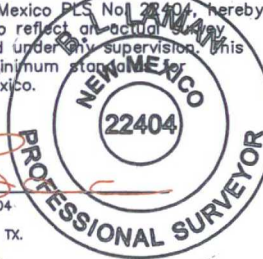
30' X 30' SURFACE SITE EASEMENT AREA = 0.021 ACRE(S)
30' EASEMENT AREA = 0.827 ACRE(S)
20' TEMPORARY WORK SPACE AREA = 0.585 ACRE(S)
1201.50 FEET OR 72.82 RODS

SEE THE ATTACHED LEGAL DESCRIPTION

Note: All bearings recited herein are based on the New Mexico State Plane Coordinate System, NAD 83, New Mexico East Zone 3001, US Survey Feet, all distances are grid.

I, B.L. Laman, New Mexico PLS No. 22404, hereby certify this survey to reflect an actual survey made on the ground under my supervision. This survey meets the minimum standards for surveying in New Mexico.

B.L. Laman PLS #22404
Date Signed: 09-21-2016
571 STATE STREET JASPER, TX.
(409) 202-5111 75951
Employee of Horizonrow, LLC



HORIZON ROW LLC

Drawn for:

devon

Drawn by: K.MORGAN

Date: 09/17/2015

DEVON ENERGY PRODUCTION COMPANY, L.P.
SEA WOLF 1-12 BS CTB 1
BATTERY CONNECT
(CRUDE)

PROPOSED 30' EASEMENT
ON THE PROPERTY OF
BUREAU OF LAND MANAGEMENT
SECTION 1, T26S-R33E, N.M.P.M.

LINE NUMBER:

WBS NUMBER:
CC-110933.02

SCALE:
1" = 1000'

REVISIONS:
9/19/16 CMAAS

SHEET:
1 OF 5

0 1000 2000



**SECTION 1, T26S-R33E, N.M.P.M.,
LEA COUNTY, NEW MEXICO**

LEGAL DESCRIPTION

FOR

DEVON ENERGY PRODUCTION COMPANY, L.P.

BUREAU OF LAND MANAGEMENT

30' EASEMENT DESCRIPTION:

BEING an easement thirty (30) feet in width lying fifteen (15) feet on the right side and fifteen (15) feet on the left side of the survey centerline described below, being out of the northeast quarter (NE ¼) of Section 1, Township 26 South, Range 33 East, N.M.P.M., Lea County, New Mexico, and being out of a parcel of land owned by the Bureau of Land Management. Said centerline of easement being more particularly described as follows:

Commencing from a 1" iron pipe w/ BC 1913 for the north quarter corner of Section 1, T26S-R33E, N.M.P.M., Lea County, New Mexico;

Thence S 42°30'34" E a distance of 373.19' to the **Point of Beginning** of this easement having coordinates of Northing=393405.98, Easting=791622.23 feet and continuing the following courses;

Thence S 32°14'20" E a distance of 309.99' to an angle point;

Thence S 57°45'23" W a distance of 406.12' to an angle point;

Thence S 00°24'36" E a distance of 425.41' to an angle point;

Thence S 89°33'06" W a distance of 59.98' to the **Point of Ending** having coordinates of Northing=392501.24, Easting=791387.17 in the northeast quarter of Section 1, T26S-R33E, from said point a 1" iron pipe w/ BC 1913 for the west quarter corner of Section 1, T26S-R33E bears S 60°43'33" W a distance of 3027.61', covering **1201.50' or 72.82 rods** and having an area of **0.827 acres**.

20' TEMPORARY WORKSPACE DESCRIPTION:

Being a temporary workspace twenty (20) feet in width lying on the left side and adjoining the left side of the above described thirty (30) feet easement, having a total area of **0.585 acres**.

30' X 30' SURFACE SITE EASEMENT DESCRIPTION:

Being a surface site easement thirty (30) feet in width and thirty (30) feet in length and out of the northeast quarter (NE ¼) of Section 1, T26S-R33E, N.M.P.M. Lea County, New Mexico, and being more particularly described as follows;

Commencing from a 1" iron pipe w/ BC 1913 for the north quarter corner of Section 1, T26S-R33E, N.M.P.M., Lea County, New Mexico;

Thence S 45°16'51" E a distance of 361.33' to the **Point of Beginning** of this surface site and continuing the following courses;

S 32°14'57" E a distance of 30.00' to a point;
S 57°45'03" W a distance of 30.00' to a point;
N 32°14'57" W a distance of 30.00' to a point;
N 57°45'03" E a distance of 30.00' to the point of beginning, having an area
of **0.021 acre.**

NOTES:

Bearings, distances and coordinates shown herein are based on New Mexico State Plane Coordinate System, NAD 83, East Zone 3001, US Survey Feet, all distances are grid.

I, B.L. Laman, New Mexico PLS No. 22404, hereby certify this survey to reflect an actual survey made on the ground under my supervision. This survey meets the minimum standards for surveying in New Mexico.



B.L. Laman PLS 22404
Date Signed: 09/21/2016
Horizon Row, LLC
571 State Street, Jasper, TX
(409) 202-5111 75951
Employee of Horizon Row, LLC



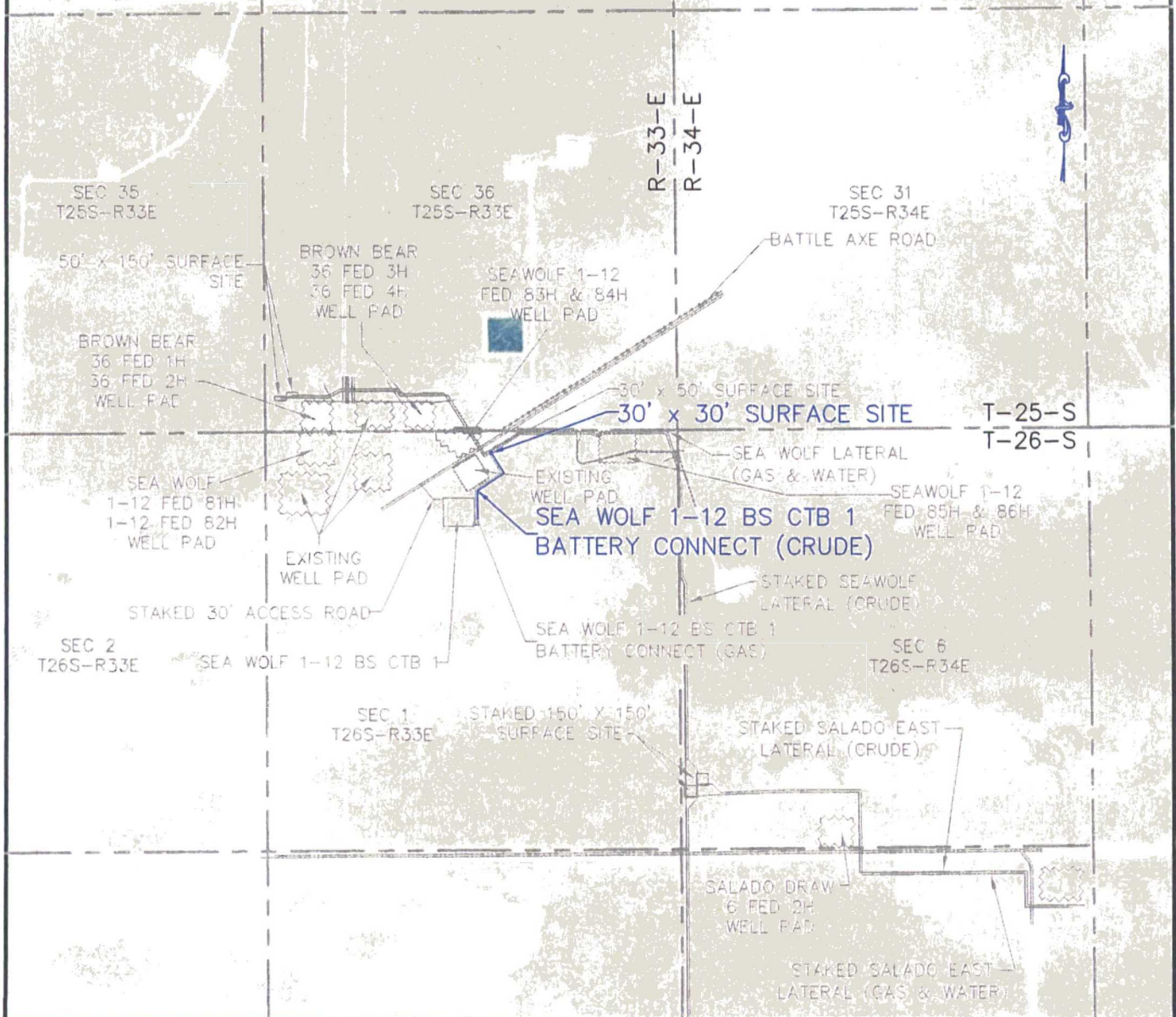
[illegible]

LEA COUNTY, NEW MEXICO

SHEET:
4 OF 5

EXHIBIT "A"

PAGE 5 of 5



AERIAL MAP

SECTION 1, T26S-R33E, N.M.P.M.;

LEA COUNTY, NEW MEXICO

HORIZON ROW LLC

DEVON ENERGY PRODUCTION CO., L.P.

PROPOSED 30' EASEMENT

Drawn by:
K.MORGAN

Date: 07/09/2015

Drawn for:



LINE NUMBER:

WBS NUMBER:
CC-110933.02

SCALE:
1" = 2000'

REVISIONS:
9/19/16 CMAAS

SHEET:
5 OF 5

SECTION 1, T26S-R33E, N.M.P.M.,
LEA COUNTY, NEW MEXICO

ELECTRIC LINE PLAT

LEGAL DESCRIPTION

FOR

DEVON ENERGY PRODUCTION COMPANY, L.P.

BUREAU OF LAND MANAGEMENT

30' EASEMENT DESCRIPTION:

BEING an easement thirty (30) feet in width lying fifteen (15) feet on the right side and fifteen (15) feet on the left side of the survey centerline described below, being out of the northwest quarter (NW ¼) of Section 1, Township 26 South, Range 33 East, N.M.P.M., Lea County, New Mexico, and being out of a parcel of land owned by the Bureau of Land Management. Said centerline of easement being more particularly described as follows:

Commencing from a 1" iron pipe w/ BC 1913 for the north quarter corner of Section 1, T26S-R33E, N.M.P.M., Lea County, New Mexico;

Thence S 28°13'33" W a distance of 945.96' to the **Point of Beginning** of this easement having coordinates of Northing=392847.61 feet, Easting=790922.67 feet and continuing the following courses;

Thence N 89°29'56" E, a distance of 107.03' to an angle point;

Thence S 00°12'25" E a distance of 14.94' to the **Point of Ending** having coordinates of Northing=392833.61 feet, Easting=791029.75 feet, from said point a 1" iron pipe w/ BC 1913 for the east quarter corner of Section 1, T26S-R33E bears S 59°24'19" E a distance of 3485.85', covering **121.97' or 7.39 rods** and having an area of **0.084 acres**.

NOTES:

Bearings, distances and coordinates shown herein are based on New Mexico State Plane Coordinate System, NAD 83, East Zone 3001, US Survey Feet, all distances are grid.

I, B.L. Laman, New Mexico PLS No. 22404, hereby certify this survey to reflect an actual survey made on the ground under my supervision. This survey meets the minimum standards for surveying in New Mexico.

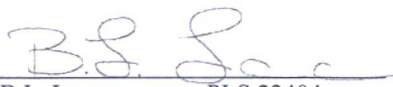
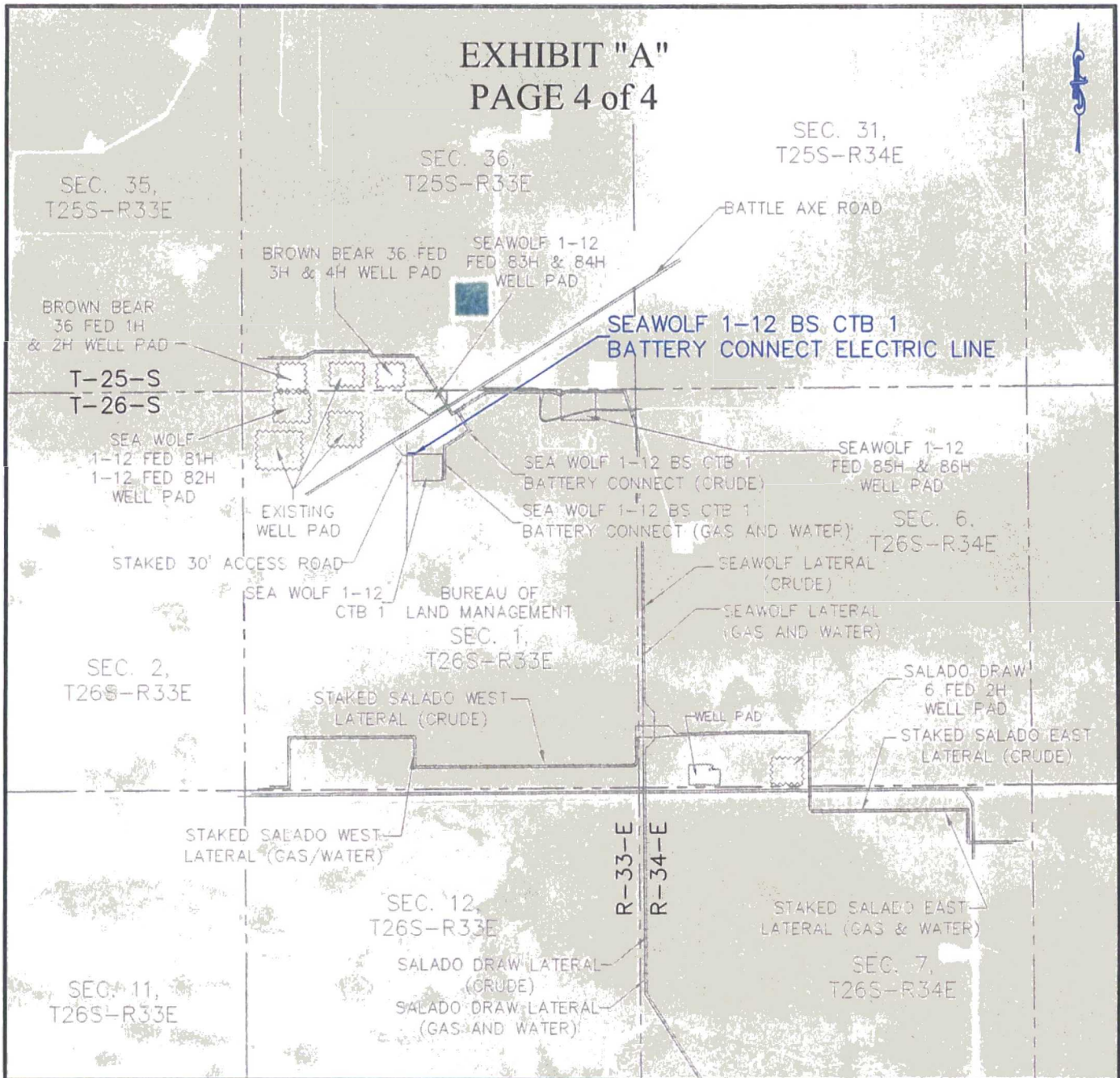

B.L. Laman PLS 22404
Date Signed: 09/20/2016
Horizon Row, LLC
571 State Street, Jasper, TX
(402) 202-5111 75951
Employee of Horizon Row, LLC



EXHIBIT "A"

PAGE 4 of 4



AERIAL MAP

SECTION 1, T26S-R33E, N.M.P.M.;
LEA COUNTY, NEW MEXICO

HORIZON ROW LLC

DEVON ENERGY PRODUCTION CO., L.P.

PROPOSED 30' EASEMENT

Drawn by:
W.Beets

Date: 01/09/2016

Drawn for:



LINE NUMBER:
EL7755

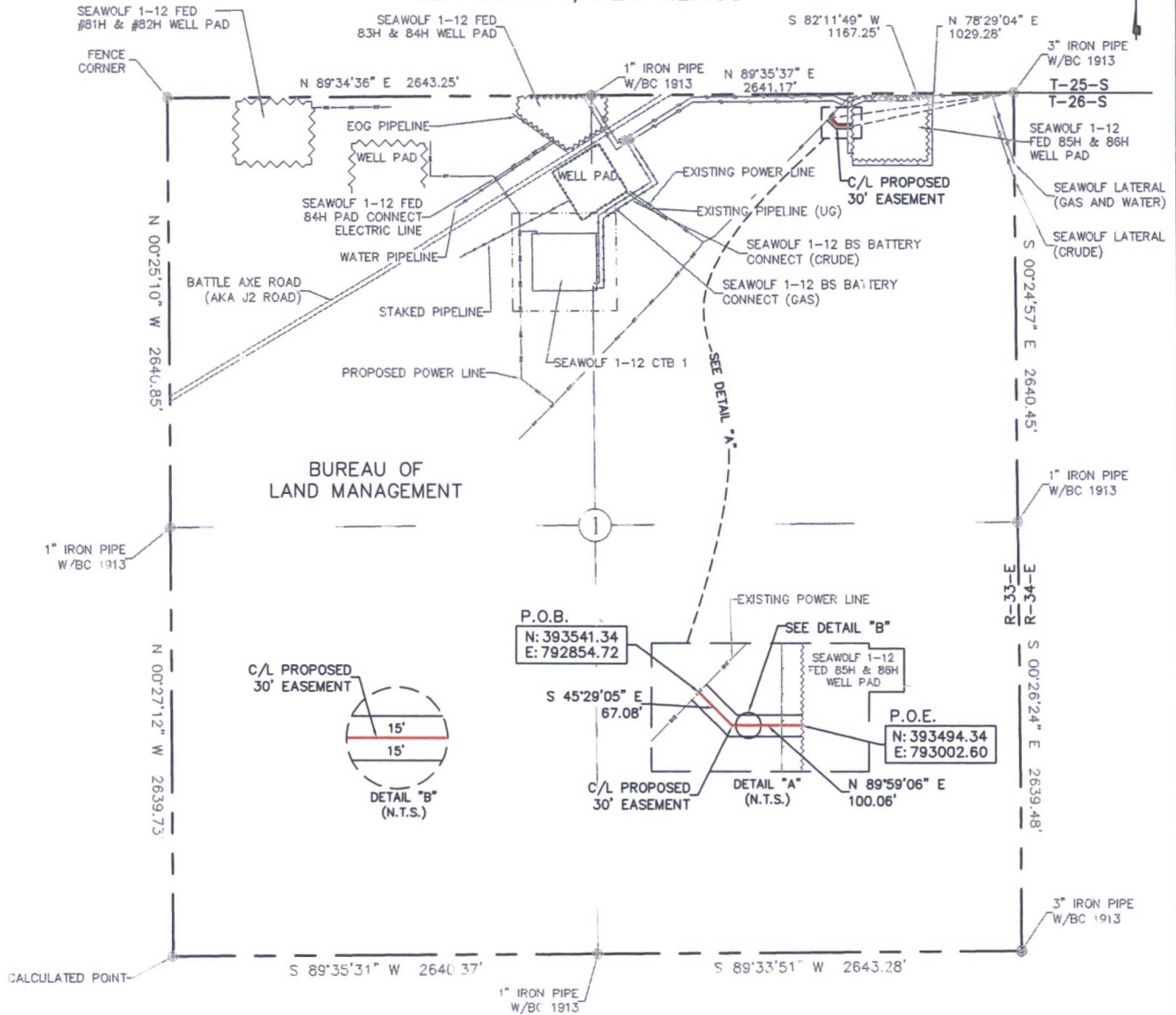
WBS NUMBER:
XX-118184.AL

SCALE:
1" = 2000'

REVISIONS:
9/19/16 CMAAS

SHEET:
4 OF 4

EXHIBIT "A"
PAGE 1 of 4
ELECTRIC LINE PLAT
SECTION 1, T26S-R33E, N.M.P.M.
LEA COUNTY, NEW MEXICO

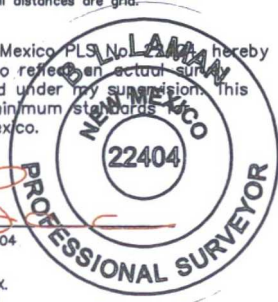


30' EASEMENT AREA = 0.115 ACRE(S)
167.14 FEET OR 10.13 RODS

SEE THE ATTACHED LEGAL DESCRIPTION

Note: All bearings recited herein are based on the New Mexico State Plane Coordinate System, NAD 83, New Mexico East Zone 3001, US Survey Feet, all distances are grid.

I, B.L. Laman, New Mexico Professional Surveyor, hereby certify this survey to reflect an actual survey made on the ground under my supervision. This survey meets the minimum standards for surveying in New Mexico.



B.L. Laman PLS #22404
Date Signed: 09-20-2016
Horizonrow, LLC
571 State Street Jasper, TX.
(409) 202-5111 75951
Employee of Horizonrow, LLC

HORIZON ROW LLC

Drawn for:

devon

Drawn by:
CHRIS MAAS

Date: 08/12/2016

DEVON ENERGY PRODUCTION COMPANY, L.P.

SEA WOLF 1-12 FED 85H & 86H
PAD CONNECT ELECTRIC LINE

PROPOSED 30' EASEMENT
ON THE PROPERTY OF
BUREAU OF LAND MANAGEMENT
SECTION 1, T26S-R33E, N.M.P.M.

LINE NUMBER:
EL7861

WBS NUMBER:
XX-118184.AL

SCALE:
1" = 1000'

REVISIONS:
9/19/16 CMAAS
SHEET:
1 OF 4

0+00.0 P.O.B./EXISTING POWER LINE
0+67.1 STAKED POWER POLE
1+67.1 P.O.E./SEA WOLF 1-12 FED 85H & 86H WELL PAD



SECTION 1, T26S-R33E, N.M.P.M.,
LEA COUNTY, NEW MEXICO

ELECTRIC LINE PLAT

LEGAL DESCRIPTION

FOR

DEVON ENERGY PRODUCTION COMPANY, L.P.

BUREAU OF LAND MANAGEMENT

30' EASEMENT DESCRIPTION:

BEING an easement thirty (30) feet in width lying fifteen (15) feet on the right side and fifteen (15) feet on the left side of the survey centerline described below, being out of the northeast quarter (NE ¼) of Section 1, Township 26 South, Range 33 East, N.M.P.M., Lea County, New Mexico, and being out of a parcel of land owned by the Bureau of Land Management. Said centerline of easement being more particularly described as follows:

Commencing from a 3" iron pipe w/ BC 1913 for the northeast corner of Section 1, T26S-R33E, N.M.P.M., Lea County, New Mexico;

Thence S 82°11'49" W a distance of 1167.25' to the **Point of Beginning** of this easement having coordinates of Northing=393541.34 feet, Easting=792854.72 feet and continuing the following courses;

Thence S 45°29'05" E a distance of 67.08' to an angle point;

Thence N 89°59'06" E a distance of 100.06' to the **Point of Ending** having coordinates of Northing=393494.34 feet, Easting=793002.60 feet, from said point a 3" iron pipe w/ BC 1913 for the northeast corner of Section 1, T26S-R33E bears N 78°29'04" E a distance of 1029.28', covering **167.14' or 10.13 rods** and having an area of **0.115 acres**.

NOTES:

Bearings, distances and coordinates shown herein are based on New Mexico State Plane Coordinate System, NAD 83, East Zone 3001, US Survey Feet, all distances are grid.

I, B.L. Laman, New Mexico PLS No. 22404, hereby certify this survey to reflect an actual survey made on the ground under my supervision. This survey meets the minimum standards for surveying in New Mexico.



B.L. Laman PLS 22404
Date Signed: 09/20/2016
Horizon Row, LLC
571 State Street, Jasper, TX
(402) 202-5111 75951
Employee of Horizon Row, LLC



EXHIBIT "A"
PAGE 3 of 4

Drill Hole 3343

35 36 31

SEAWOLF 1-12 FED 84H PAD CONNECT ELECTRIC LINE

BROWN BEAR 36 FED 1H & 2H WELL PAD

Drill Hole 3320

SEAWOLF 1-12 FED 83H & 84H WELL PAD

SEAWOLF 1-12 FED 85H & 86H WELL PAD

SEAWOLF 1-12 BS CTB 1 BATTERY CONNECT (CRUDE)

SEAWOLF 1-12 BS CTB 1 BATTERY CONNECT (GAS AND WATER)

SEAWOLF LATERAL (CRUDE)

SEAWOLF LATERAL (GAS AND WATER)

SALADO DRAW 6 FED 2H WELL PAD

STAKED SALADO EAST LATERAL (CRUDE)

STAKED SALADO EAST LATERAL (GAS & WATER)

SALADO DRAW LATERAL (CRUDE)

SALADO DRAW LATERAL (GAS AND WATER)

Drill Hole 3340

Drill Hole 3374

Drill Hole 3350

Drill Hole 3371

Drill Hole 3372

Drill Hole 3373

Drill Hole 3374

Drill Hole 3375

Drill Hole 3376

Drill Hole 3377

Drill Hole 3378

Drill Hole 3379

Drill Hole 3380

Drill Hole 3381

Drill Hole 3382

Drill Hole 3383

Drill Hole 3384

Drill Hole 3385

Drill Hole 3386

Drill Hole 3387

Drill Hole 3388

Drill Hole 3389

Drill Hole 3390

Drill Hole 3391

Drill Hole 3392

Drill Hole 3393

Drill Hole 3394

Drill Hole 3395

Drill Hole 3396

Drill Hole 3397

Drill Hole 3398

Drill Hole 3399

Drill Hole 3400

Drill Hole 3401

Drill Hole 3402

Drill Hole 3403

Drill Hole 3404

Drill Hole 3405

Drill Hole 3406

Drill Hole 3407

Drill Hole 3408

Drill Hole 3409

Drill Hole 3410

Drill Hole 3411

Drill Hole 3412

Drill Hole 3413

Drill Hole 3414

Drill Hole 3415

Drill Hole 3416

Drill Hole 3417

Drill Hole 3418

Drill Hole 3419

Drill Hole 3420

Drill Hole 3421

Drill Hole 3422

Drill Hole 3423

Drill Hole 3424

Drill Hole 3425

Drill Hole 3426

Drill Hole 3427

Drill Hole 3428

Drill Hole 3429

Drill Hole 3430

Drill Hole 3431

Drill Hole 3432

Drill Hole 3433

Drill Hole 3434

Drill Hole 3435

Drill Hole 3436

Drill Hole 3437

Drill Hole 3438

Drill Hole 3439

Drill Hole 3440

Drill Hole 3441

Drill Hole 3442

Drill Hole 3443

Drill Hole 3444

Drill Hole 3445

Drill Hole 3446

Drill Hole 3447

Drill Hole 3448

Drill Hole 3449

Drill Hole 3450

Drill Hole 3451

Drill Hole 3452

Drill Hole 3453

Drill Hole 3454

Drill Hole 3455

Drill Hole 3456

Drill Hole 3457

Drill Hole 3458

Drill Hole 3459

Drill Hole 3460

Drill Hole 3461

Drill Hole 3462

Drill Hole 3463

Drill Hole 3464

Drill Hole 3465

Drill Hole 3466

Drill Hole 3467

Drill Hole 3468

Drill Hole 3469

Drill Hole 3470

Drill Hole 3471

Drill Hole 3472

Drill Hole 3473

Drill Hole 3474

Drill Hole 3475

Drill Hole 3476

Drill Hole 3477

Drill Hole 3478

Drill Hole 3479

Drill Hole 3480

Drill Hole 3481

Drill Hole 3482

Drill Hole 3483

Drill Hole 3484

Drill Hole 3485

Drill Hole 3486

Drill Hole 3487

Drill Hole 3488

Drill Hole 3489

Drill Hole 3490

Drill Hole 3491

Drill Hole 3492

Drill Hole 3493

Drill Hole 3494

Drill Hole 3495

Drill Hole 3496

Drill Hole 3497

Drill Hole 3498

Drill Hole 3499

Drill Hole 3500

Drill Hole 3501

Drill Hole 3502

Drill Hole 3503

Drill Hole 3504

Drill Hole 3505

Drill Hole 3506

Drill Hole 3507

Drill Hole 3508

Drill Hole 3509

Drill Hole 3510

Drill Hole 3511

Drill Hole 3512

Drill Hole 3513

Drill Hole 3514

Drill Hole 3515

Drill Hole 3516

Drill Hole 3517

Drill Hole 3518

Drill Hole 3519

Drill Hole 3520

Drill Hole 3521

Drill Hole 3522

Drill Hole 3523

Drill Hole 3524

Drill Hole 3525

Drill Hole 3526

Drill Hole 3527

Drill Hole 3528

Drill Hole 3529

Drill Hole 3530

Drill Hole 3531

Drill Hole 3532

Drill Hole 3533

Drill Hole 3534

Drill Hole 3535

Drill Hole 3536

Drill Hole 3537

Drill Hole 3538

Drill Hole 3539

Drill Hole 3540

Drill Hole 3541

Drill Hole 3542

Drill Hole 3543

Drill Hole 3544

Drill Hole 3545

Drill Hole 3546

Drill Hole 3547

Drill Hole 3548

Drill Hole 3549

Drill Hole 3550

Drill Hole 3551

Drill Hole 3552

Drill Hole 3553

Drill Hole 3554

Drill Hole 3555

Drill Hole 3556

Drill Hole 3557

Drill Hole 3558

Drill Hole 3559

Drill Hole 3560

Drill Hole 3561

Drill Hole 3562

Drill Hole 3563

Drill Hole 3564

Drill Hole 3565

Drill Hole 3566

Drill Hole 3567

Drill Hole 3568

Drill Hole 3569

Drill Hole 3570

Drill Hole 3571

Drill Hole 3572

Drill Hole 3573

Drill Hole 3574

Drill Hole 3575

Drill Hole 3576

Drill Hole 3577

Drill Hole 3578

Drill Hole 3579

Drill Hole 3580

Drill Hole 3581

Drill Hole 3582

Drill Hole 3583

Drill Hole 3584

Drill Hole 3585

Drill Hole 3586

Drill Hole 3587

Drill Hole 3588

Drill Hole 3589

Drill Hole 3590

Drill Hole 3591

Drill Hole 3592

Drill Hole 3593

Drill Hole 3594

Drill Hole 3595

Drill Hole 3596

Drill Hole 3597

Drill Hole 3598

Drill Hole 3599

Drill Hole 3600

Drill Hole 3601

Drill Hole 3602

Drill Hole 3603

Drill Hole 3604

Drill Hole 3605

Drill Hole 3606

Drill Hole 3607

Drill Hole 3608

Drill Hole 3609

Drill Hole 3610

Drill Hole 3611

Drill Hole 3612

Drill Hole 3613

Drill Hole 3614

Drill Hole 36

SECTION 1, T26S-R33E, N.M.P.M.;
LEA COUNTY, NEW MEXICO

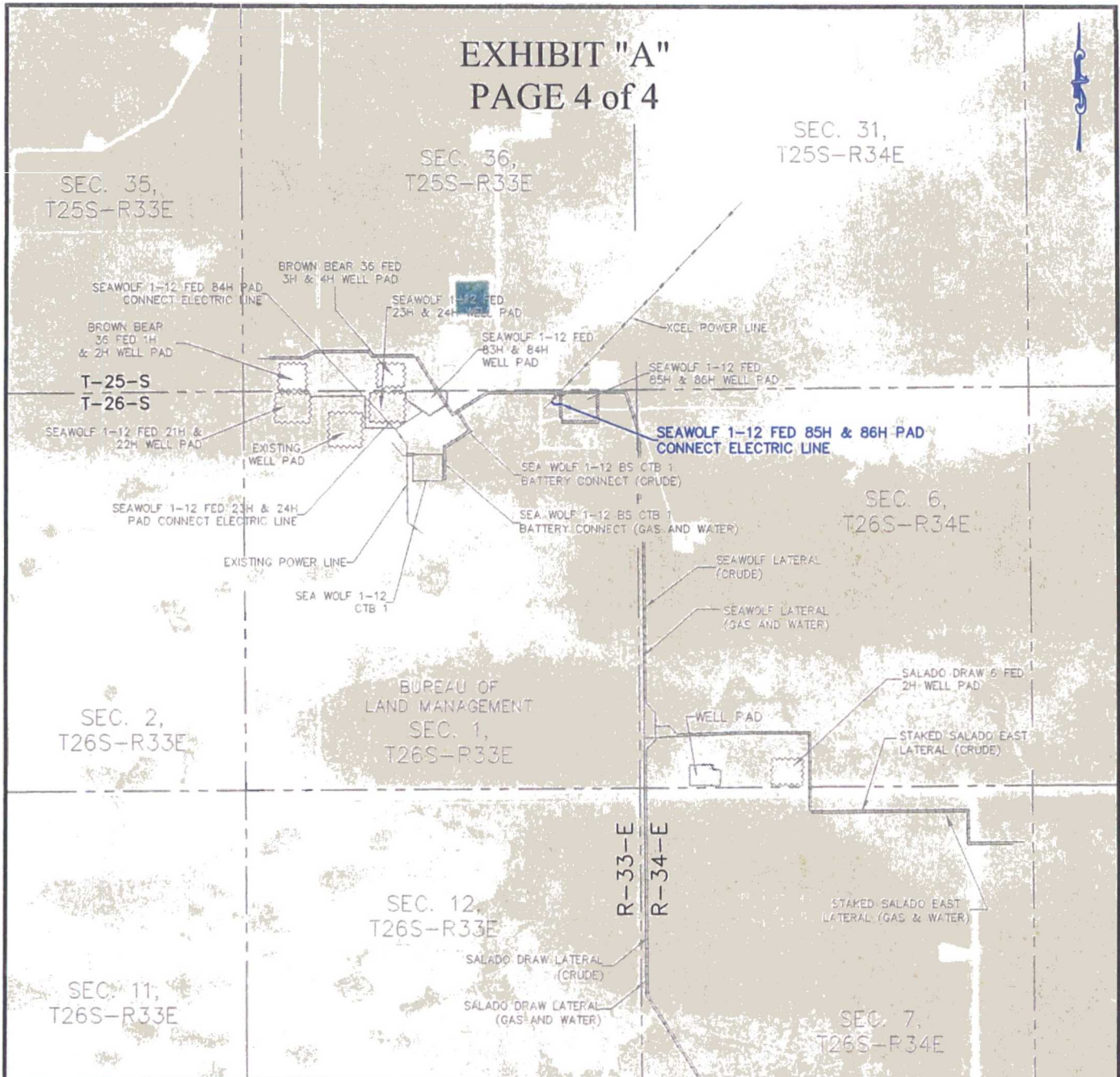


devon

SHEET:
3 OF 4

EXHIBIT "A"

PAGE 4 of 4



AERIAL MAP

SECTION 1, T26S-R33E, N.M.P.M.;
LEA COUNTY, NEW MEXICO

HORIZON ROW LLC

DEVON ENERGY PRODUCTION CO., L.P.

PROPOSED 30' EASEMENT

Drawn by:
CHRIS MAAS

Date: 08/12/2016

Drawn for:



LINE NUMBER:
EL7861

WBS NUMBER:
XX-118184.AL

SCALE:
1" = 2000'

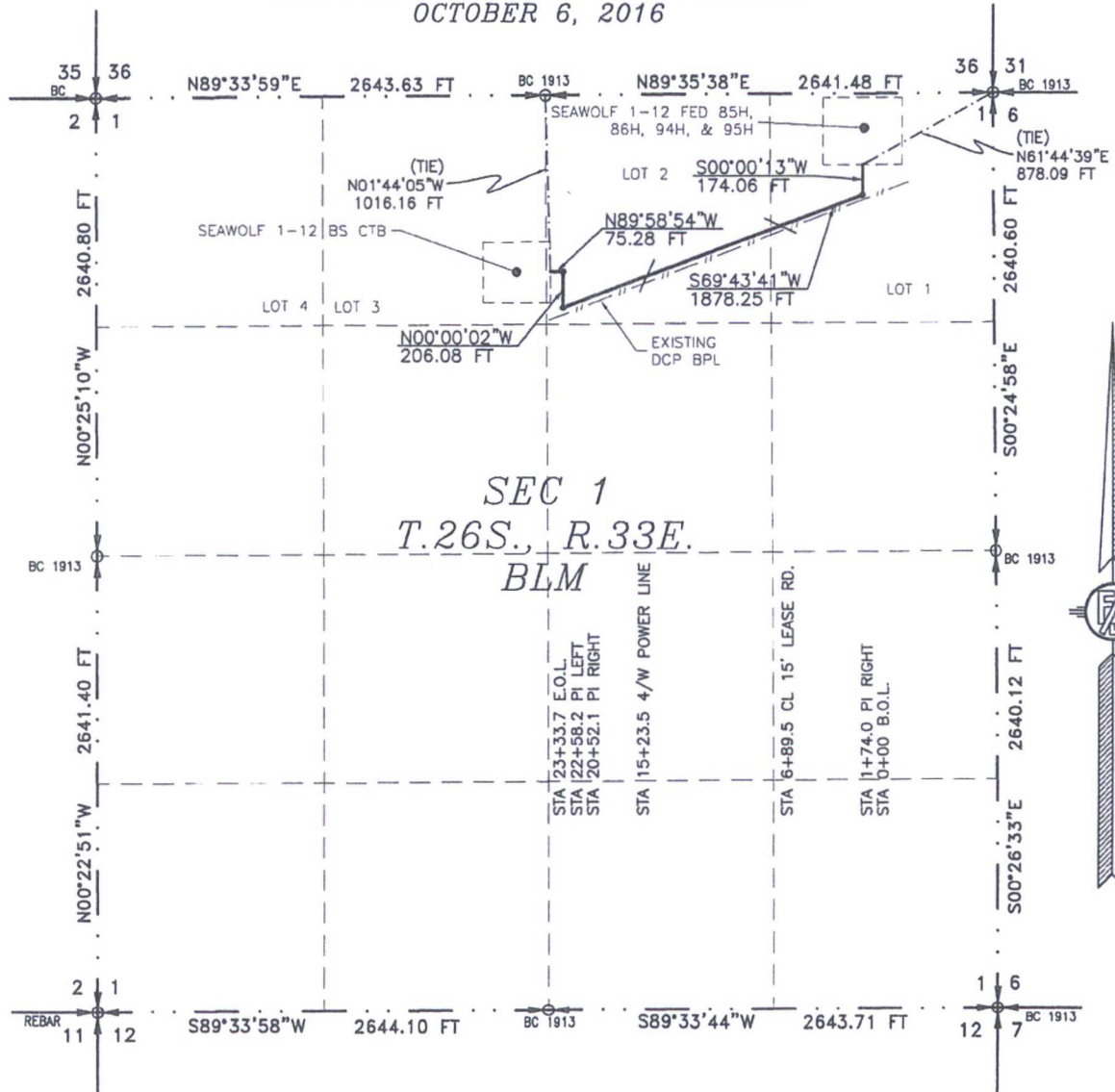
REVISIONS:

SHEET:
4 OF 4

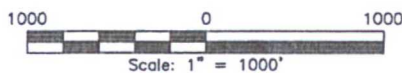
FLOWLINE PLAT (764049F)

R-O-W FOR FOUR 8" FLOWLINES AND FOUR 4" GAS LIFT LINES ALL IN SAME DITCH TO CONNECT THE SEAWOLF 1-12 FED 85H, 86H, 94H, & 95H TO THE SEAWOLF 1-12 BS CTB

DEVON ENERGY PRODUCTION COMPANY, L.P.
CENTERLINE SURVEY OF A PIPELINE CROSSING
SECTION 1, TOWNSHIP 26 SOUTH, RANGE 33 EAST, N.M.P.M.
LEA COUNTY, STATE OF NEW MEXICO
OCTOBER 6, 2016



SEE NEXT SHEET (2-4) FOR DESCRIPTION



GENERAL NOTES

- 1.) THE INTENT OF THIS ROUTE SURVEY IS TO ACQUIRE AN EASEMENT.
- 2.) BASIS OF BEARING IS NMSP EAST (NAD83) MODIFIED TO SURFACE COORDINATES. NAD 83 (FEET) AND NAVD 88 (FEET) COORDINATE SYSTEMS USED IN THE SURVEY.

SURVEYOR CERTIFICATE

I, FILIMON F. JARAMILLO, A NEW MEXICO PROFESSIONAL SURVEYOR NO. 12797, HEREBY CERTIFY THAT I HAVE CONDUCTED AND AM RESPONSIBLE FOR THIS SURVEY, THAT THIS SURVEY IS TRUE AND CORRECT TO THE BEST OF MY KNOWLEDGE AND BELIEF, AND THAT THIS SURVEY AND PLAT MEET THE MINIMUM STANDARDS FOR LAND SURVEYING IN THE STATE OF NEW MEXICO.

IN WITNESS WHEREOF, THIS CERTIFICATE IS EXECUTED AT CARLSBAD, NEW MEXICO, THIS 6 DAY OF OCTOBER 2016

Filimon F. Jaramillo
FILIMON F. JARAMILLO, PLS. 12797

MADRON SURVEYING, INC.
301 SOUTH CANAL
CARLSBAD, NEW MEXICO 88220
Phone (575) 234-3341

SHEET: 1-4

MADRON SURVEYING, INC. 301 SOUTH CANAL CARLSBAD, NEW MEXICO

SURVEY NO. 4876A

FLOWLINE PLAT (764049F)

**R-O-W FOR FOUR 8" FLOWLINES AND FOUR 4" GAS LIFT LINES ALL IN SAME DITCH TO CONNECT
THE SEAWOLF 1-12 FED 85H, 86H, 94H, & 95H TO THE SEAWOLF 1-12 BS CTB**

**DEVON ENERGY PRODUCTION COMPANY, L.P.
CENTERLINE SURVEY OF A PIPELINE CROSSING
SECTION 1, TOWNSHIP 26 SOUTH, RANGE 33 EAST, N.M.P.M.
LEA COUNTY, STATE OF NEW MEXICO
OCTOBER 6, 2016**

DESCRIPTION

A STRIP OF LAND 30 FEET WIDE CROSSING BUREAU OF LAND MANAGEMENT LAND IN SECTION 1, TOWNSHIP 26 SOUTH, RANGE 33 EAST, N.M.P.M., LEA COUNTY, STATE OF NEW MEXICO AND BEING 15 FEET EACH SIDE OF THE FOLLOWING DESCRIBED CENTERLINE SURVEY:

BEGINNING AT A POINT WITHIN LOT 1 OF SAID SECTION 1, TOWNSHIP 26 SOUTH, RANGE 33 EAST, N.M.P.M., WHENCE THE NORTHEAST CORNER OF SAID SECTION 1, TOWNSHIP 26 SOUTH, RANGE 33 EAST, N.M.P.M. BEARS N61°44'39"E, A DISTANCE OF 878.09 FEET;
THENCE S00°00'13"W A DISTANCE OF 174.06 FEET TO AN ANGLE POINT OF THE LINE HEREIN DESCRIBED;
THENCE S69°43'41"W A DISTANCE OF 1878.25 FEET TO AN ANGLE POINT OF THE LINE HEREIN DESCRIBED;
THENCE N00°00'02"W A DISTANCE OF 206.08 FEET TO AN ANGLE POINT OF THE LINE HEREIN DESCRIBED;
THENCE N89°58'54"W A DISTANCE OF 75.28 FEET THE TERMINUS OF THIS CENTERLINE SURVEY, WHENCE THE NORTH QUARTER CORNER OF SAID SECTION 1, TOWNSHIP 26 SOUTH, RANGE 33 EAST, N.M.P.M. BEARS N01°44'05"W, A DISTANCE OF 1016.16 FEET;

SAID STRIP OF LAND BEING 2333.67 FEET OR 141.43 RODS IN LENGTH, CONTAINING 1.608 ACRES MORE OR LESS AND BEING ALLOCATED BY FORTIES AS FOLLOWS:

LOT 1 751.47 L.F. 45.54 RODS 0.518 ACRES
LOT 2 1582.20 L.F. 95.89 RODS 1.090 ACRES

SURVEYOR CERTIFICATE

I, FILIMON F. JARAMILLO, A NEW MEXICO PROFESSIONAL SURVEYOR NO. 12797, HEREBY CERTIFY THAT I HAVE CONDUCTED AND AM RESPONSIBLE FOR THIS SURVEY, THAT THIS SURVEY IS TRUE AND CORRECT TO THE BEST OF MY KNOWLEDGE AND BELIEF, AND THAT THIS SURVEY AND PLAT MEET THE MINIMUM STANDARDS FOR LAND SURVEYING IN THE STATE OF NEW MEXICO.

IN WITNESS WHEREOF, THIS CERTIFICATE IS EXECUTED AT CARLSBAD,

NEW MEXICO, THIS 6 DAY OF OCTOBER 2016

GENERAL NOTES

1.) THE INTENT OF THIS ROUTE SURVEY IS TO ACQUIRE AN EASEMENT.

2.) BASIS OF BEARING IS NMSP EAST (NAD83) MODIFIED TO SURFACE COORDINATES. NAD 83 (FEET) AND NAVD 88 (FEET) COORDINATE SYSTEMS USED IN THE SURVEY.

SHEET: 2-4

MADRON SURVEYING, INC.

FILIMON F. JARAMILLO PLS 12797

301 SOUTH CANAL
(575) 234-3341

CARLSBAD, NEW MEXICO

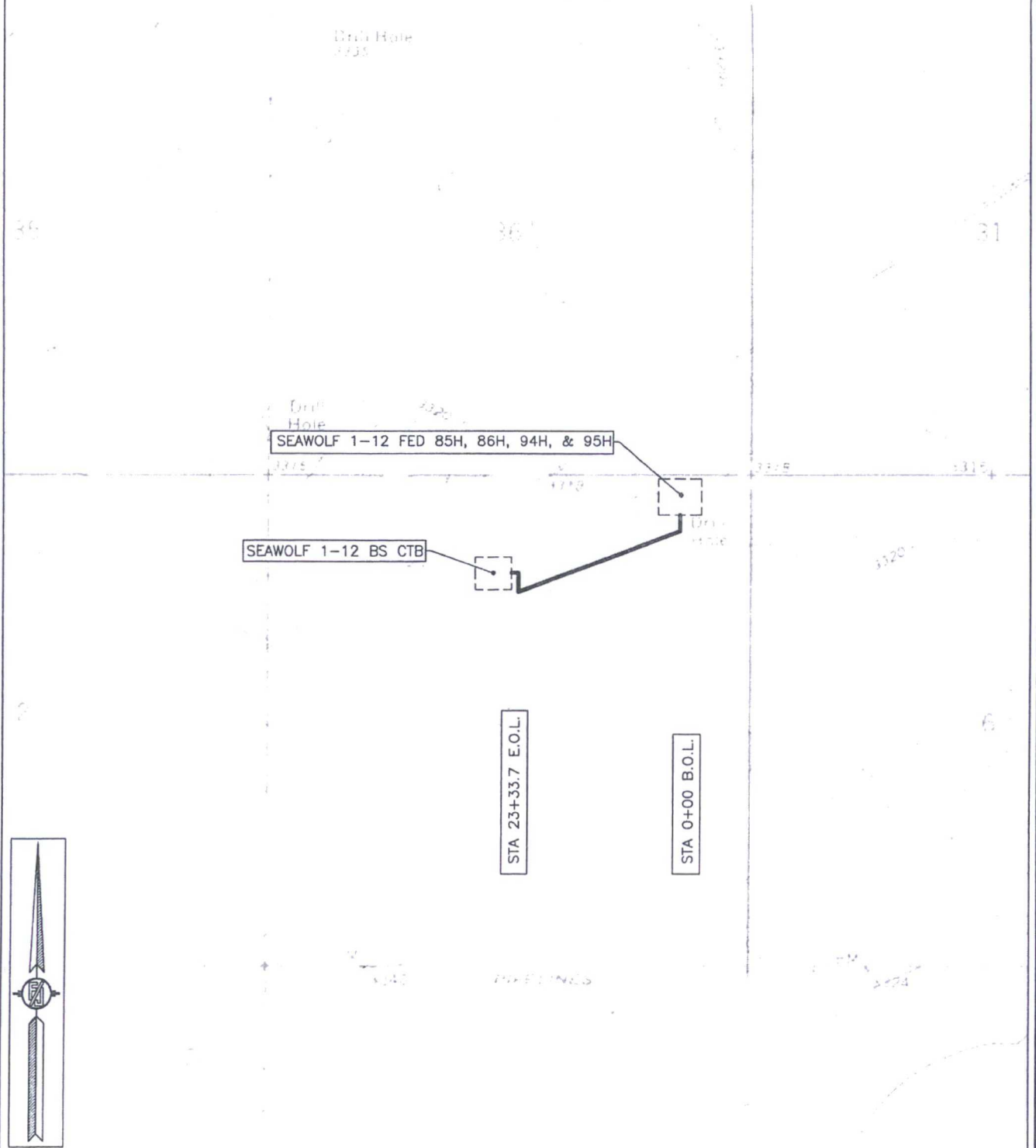
MADRON SURVEYING, INC.
301 SOUTH CANAL
CARLSBAD, NEW MEXICO 88220
Phone (575) 234-3341

SURVEY NO. 4876A

FLOWLINE PLAT (764049F)

R-O-W FOR FOUR 8" FLOWLINES AND FOUR 4" GAS LIFT LINES ALL IN SAME DITCH TO CONNECT
THE SEAWOLF 1-12 FED 85H, 86H, 94H, & 95H TO THE SEAWOLF 1-12 BS CTB

DEVON ENERGY PRODUCTION COMPANY, L.P.
CENTERLINE SURVEY OF A PIPELINE CROSSING
SECTION 1, TOWNSHIP 26 SOUTH, RANGE 33 EAST, N.M.P.M.
LEA COUNTY, STATE OF NEW MEXICO
OCTOBER 6, 2016



SHEET: 3-4

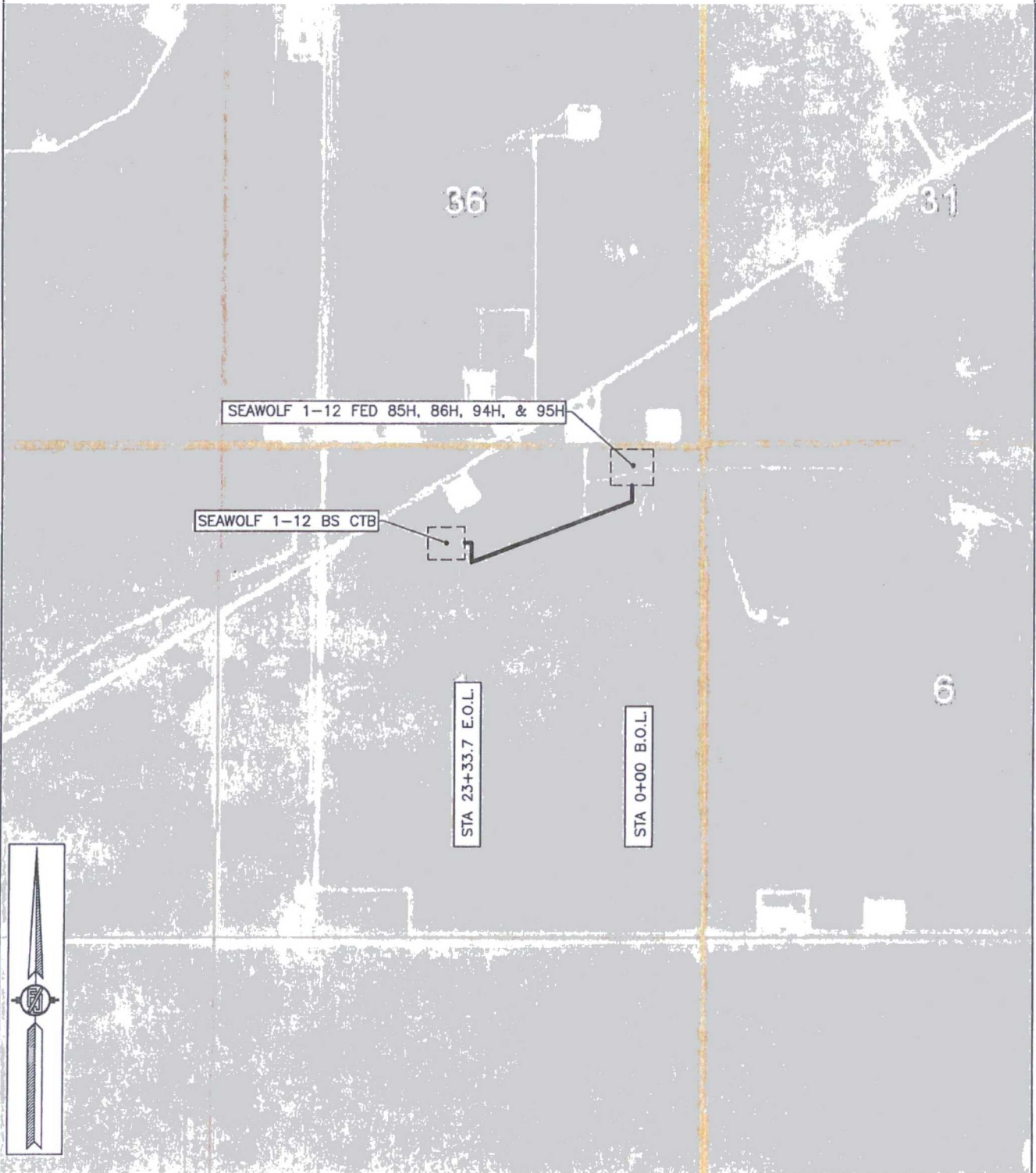
MADRON SURVEYING, INC. 301 SOUTH CANAL (575) 234-3341 CARLSBAD, NEW MEXICO

SURVEY NO. 4876A

FLOWLINE PLAT (764049F)

R-O-W FOR FOUR 8" FLOWLINES AND FOUR 4" GAS LIFT LINES ALL IN SAME DITCH TO CONNECT
THE SEAWOLF 1-12 FED 85H, 86H, 94H, & 95H TO THE SEAWOLF 1-12 BS CTB

DEVON ENERGY PRODUCTION COMPANY, L.P.
CENTERLINE SURVEY OF A PIPELINE CROSSING
SECTION 1, TOWNSHIP 26 SOUTH, RANGE 33 EAST, N.M.P.M.
LEA COUNTY, STATE OF NEW MEXICO
OCTOBER 6, 2016



SHEET: 4-4

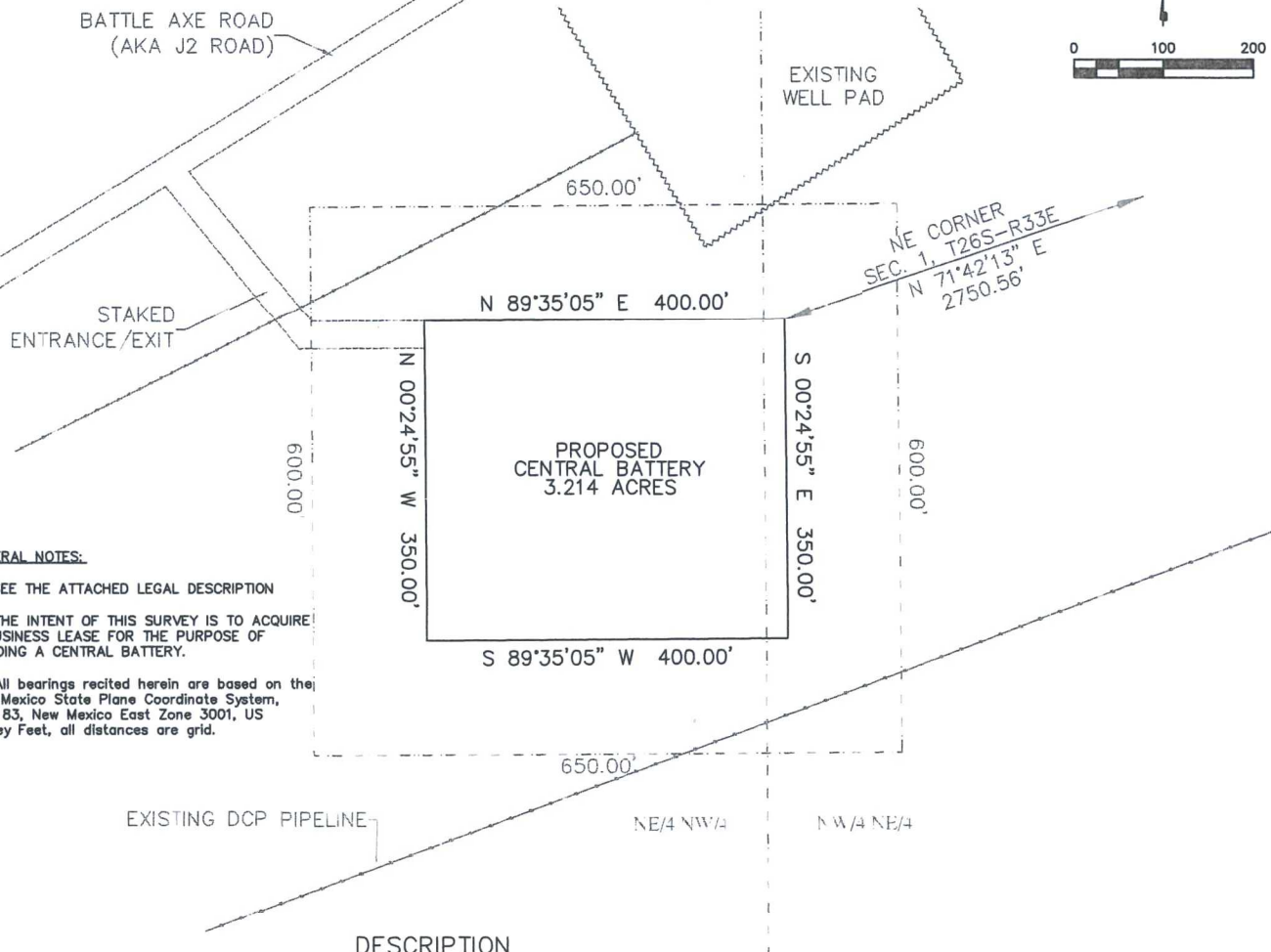
MADRON SURVEYING, INC. 301 SOUTH CANAL (575) 234-3341 CARLSBAD, NEW MEXICO

SURVEY NO. 4876A

SEA WOLF 1-12 BS CTB 1

DEVON ENERGY PRODUCTION COMPANY, L.P.
IN THE NW/4 NE/4 AND THE NE/4 NW/4 OF
SECTION 1, TOWNSHIP 26 SOUTH, RANGE 33 EAST, N.M.P.M.
LEA COUNTY, NEW MEXICO

SHEET 1 OF 8
EXHIBIT "A"



GENERAL NOTES:

- 1.) SEE THE ATTACHED LEGAL DESCRIPTION
- 2.) THE INTENT OF THIS SURVEY IS TO ACQUIRE A BUSINESS LEASE FOR THE PURPOSE OF BUILDING A CENTRAL BATTERY.
- 3.) All bearings recited herein are based on the New Mexico State Plane Coordinate System, NAD 83, New Mexico East Zone 3001, US Survey Feet, all distances are grid.

DESCRIPTION

BEING A CENTRAL TANK BATTERY EASEMENT LYING IN THE NW/4 NE/4 AND THE NE/4 NW/4 OF SECTION 1, TOWNSHIP 26 SOUTH, RANGE 33 EAST N.M.P.M., LEA COUNTY, NEW MEXICO.

BEGINNING AT THE NORTHEAST CORNER OF SAID EASEMENT, WHERE A 3" IRON PIPE W/BC 1913 FOR THE NORTHEAST CORNER OF SECTION 1, TOWNSHIP 26 SOUTH, RANGE 33 EAST N.M.P.M. BEARS N 71°42'13" E, A DISTANCE 2750.56;

THENCE S 00°24'55" E, A DISTANCE 350.0 FEET TO THE SOUTHEAST CORNER OF THIS EASEMENT;
THENCE S 89°35'05" W, A DISTANCE 400.0 FEET TO THE SOUTHWEST CORNER OF THIS EASEMENT;
THENCE N 00°24'55" W, A DISTANCE 350.0 FEET TO THE NORTHWEST CORNER OF THIS EASEMENT;
THENCE N 89°35'05" E, A DISTANCE 400.0 FEET TO THE NORTHEAST CORNER OF THIS EASEMENT, TO THE POINT OF BEGINNING; CONTAINING 3.214 ACRES.

DIRECTIONS TO LOCATION

FROM STATE HIGHWAY 128 AND BATTLE AXE ROAD, GO SOUTH ON BATTLE AXE ROAD 0.3 MILE, STAY RIGHT TO THE RIGHT ON BATTLE AXE ROAD FOR 2.6 MILES, CONTINUE TO THE RIGHT FOR 8.8 MILES, LEAVING THE EXISTING ROAD TO THE LEFT 289.4' FOR THE NORTHWEST CORNER OF THE CENTRAL TANK BATTERY.

I, B.L. Laman, New Mexico PLS No. 22404, hereby certify this survey to reflect an actual survey made on the ground under my supervision. This survey meets the minimum standards for surveying in New Mexico.



B.L. Laman, LLC
PLS #22404
DATE SIGNED: 10-01-2015
STATE STREET JASPER, TX. 75951
(409) 353-3572
Employee of Horizonrow, LLC

HORIZON ROW LLC

Drawn for:

devon

Drawn by:
K.MORGAN

Date: 09/17/2015

DEVON ENERGY PRODUCTION COMPANY, L.P.

SEA WOLF 1-12 BS CTB 1

SURVEY PLAT SHOWING
A CENTRAL TANK BATTERY
ON THE PROPERTY OF
THE BUREAU OF LAND MANAGEMENT

SITE NUMBER:

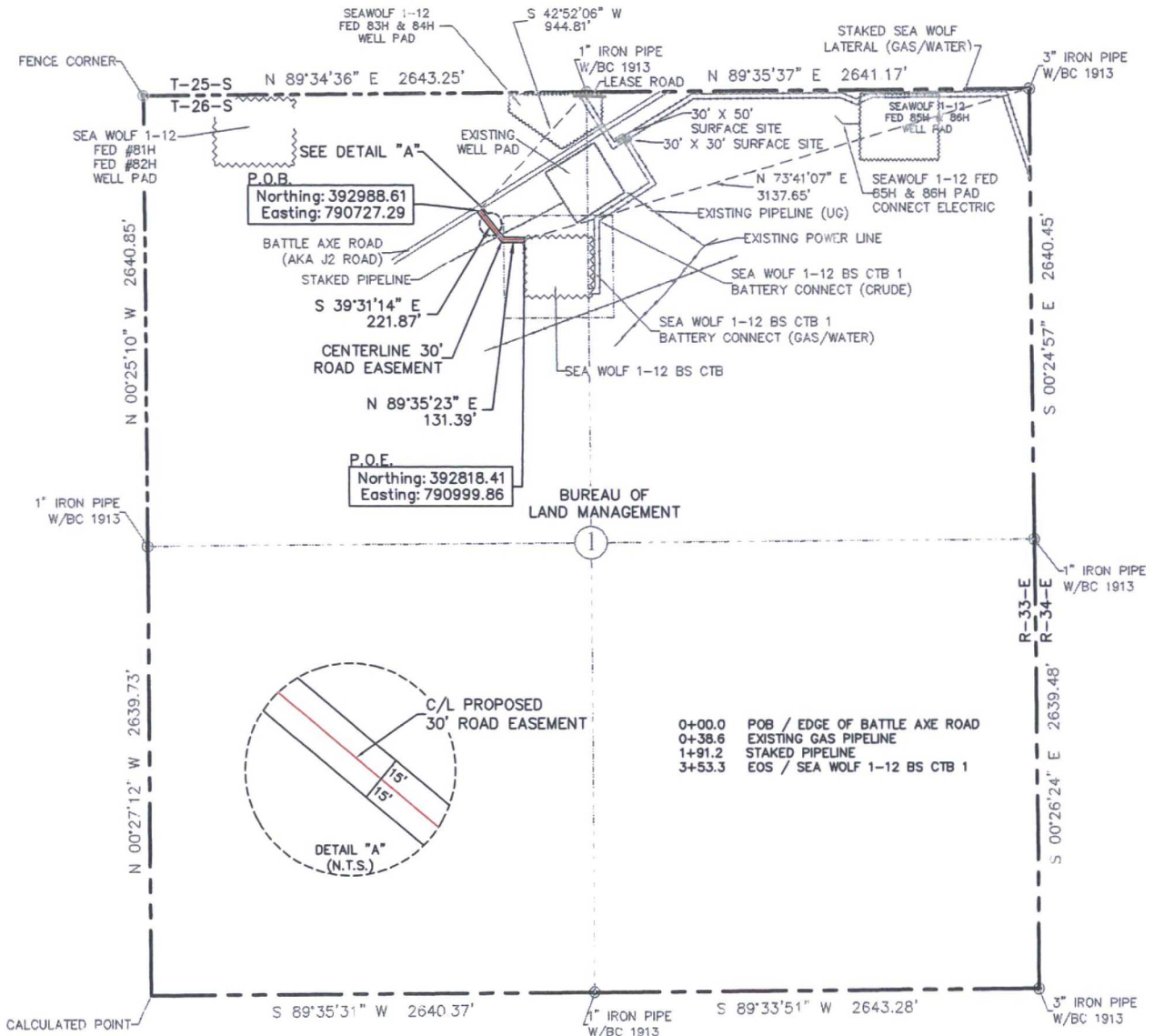
WBS NUMBER:
CC-110933.01

SCALE:
1" = 200'

REVISIONS:

SHEET:
1 OF 8

EXHIBIT "A"
PAGE 2 of 8
SECTION 1, T26S-R33E, N.M.P.M.
LEA COUNTY, NEW MEXICO



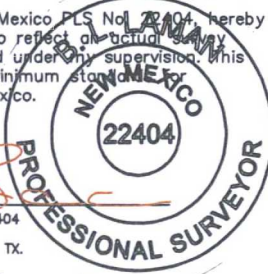
30' ROAD EASEMENT AREA = 0.243 ACRE(S)
353.26 FEET OR 21.41 RODS

SEE THE ATTACHED LEGAL DESCRIPTION

Note: All bearings recited herein are based on the New Mexico State Plane Coordinate System, NAD 83, New Mexico East Zone 3001, US Survey Feet, all distances are grid.

I, B.L. Laman, New Mexico PLS No. 22404, hereby certify this survey to reflect an actual survey made on the ground under my supervision. This survey meets the minimum standards for surveying in New Mexico.

B.L. Laman PLS #22404
Date Signed: 09-21-2015
571 STATE STREET, JASPER TX.
(409) 202-5111 75951
Employee of Horizonrow, LLC



HORIZON ROW LLC

Drawn for:

devon

Drawn by:
K.MORGAN

Date: 09/17/2015

DEVON ENERGY PRODUCTION COMPANY, L.P.
SEA WOLF 1-12 BS CTB 1

BATTERY CONNECT
(ACCESS ROAD)

PROPOSED 30' EASEMENT
ON THE PROPERTY OF
BUREAU OF LAND MANAGEMENT
SECTION 1, T26S-R33E, N.M.P.M.

LINE NUMBER:

WBS NUMBER:
CC-110933.01

SCALE:
1" = 1000'

REVISIONS:
9/19/16 CMAAS

SHEET:
2 OF 8



SECTION 1, T26S-R33E, N.M.P.M.,
LEA COUNTY, NEW MEXICO

LEGAL DESCRIPTION

FOR

DEVON ENERGY PRODUCTION COMPANY, L.P.

BUREAU OF LAND MANAGEMENT

30' ROAD EASEMENT DESCRIPTION:

BEING an easement thirty (30) feet in width lying fifteen (15) feet on the right side and fifteen (15) feet on the left side of the survey centerline described below, being out of the northwest quarter (NW $\frac{1}{4}$) of Section 1, Township 26 South, Range 33 East, N.M.P.M., Lea County, New Mexico, and being out of a parcel of land owned by the Bureau of Land Management. Said centerline of easement being more particularly described as follows:

Commencing from a 1" iron pipe w/ BC 1913 for the north quarter corner of Section 1, T26S-R33E, N.M.P.M., Lea County, New Mexico;

Thence S 42°52'06" W a distance of 944.81' to the **Point of Beginning** of this easement having coordinates of Northing=392988.61, Easting=790727.29 feet and continuing the following courses;

Thence S 39°31'14" E a distance of 221.87' to an angle point;

Thence N 89°35'23" E a distance of 131.39' to the **Point of Ending** having coordinates of Northing=392818.41, Easting=790999.86 in the northwest quarter of Section 1, T26S-R33E, from said point a 3" iron pipe w/ BC 1913 for the northeast corner of Section 1, T26S-R33E bears N 73°41'07" E a distance of 3137.65', covering **353.26' or 21.41 rods** and having an area of **0.243 acre**.

NOTES:

Bearings, distances and coordinates shown herein are based on New Mexico State Plane Coordinate System, NAD 83, East Zone 3001, US Survey Feet, all distances are grid.

I, B.L. Laman, New Mexico PLS No. 22404, hereby certify this survey to reflect an actual survey made on the ground under my supervision. This survey meets the minimum standards for surveying in New Mexico.


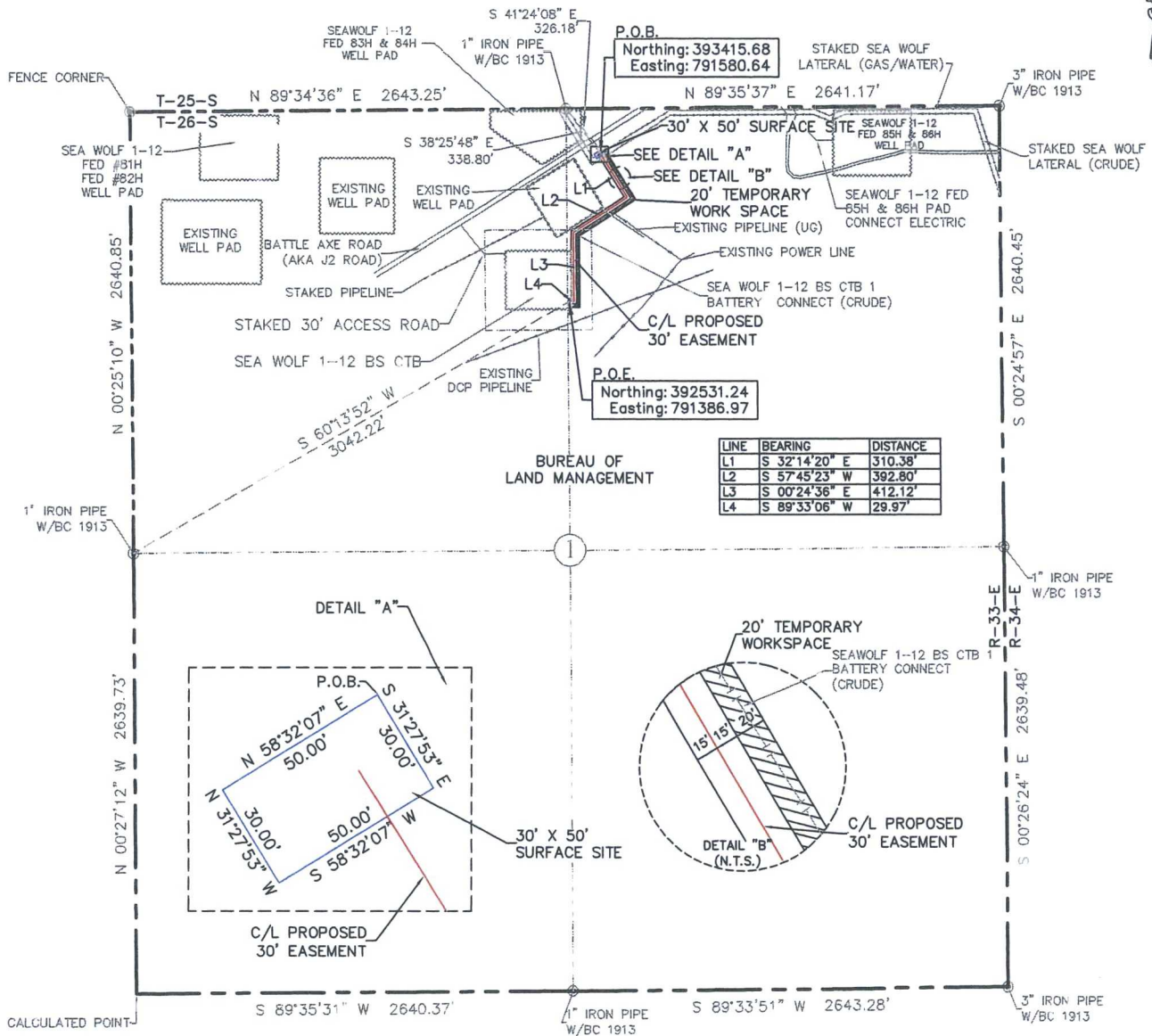

B.L. Laman PLS 22404
Date Signed: 09/21/2016
Horizon Row, LLC
571 State Street, Jasper, TX
(409) 202-5111 75951
Employee of Horizon Row, LLC



EXHIBIT "A"
PAGE 4 of 8
SECTION 1, T26S-R33E, N.M.P.M.
LEA COUNTY, NEW MEXICO



30' X 50' SURFACE SITE EASEMENT AREA = 0.034 ACRE(S)
30' EASEMENT AREA = 0.789 ACRE(S)
20' TEMPORARY WORK SPACE AREA = 0.559 ACRE(S)
1145.27 FEET OR 69.41 RODS

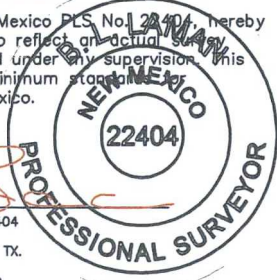
0+00.0 POB / STAKED SEA WOLF LATERAL (GAS/WATER)
0+15.0 EXIT 30' X 50' SURFACE SITE
0+30.0 STAKED SEA WOLF LATERAL (CRUDE)
4+45.7 POWER LINES
4+66.5 EXISTING GAS PIPELINE
11+30.4 SEA WOLF 1-12 BS CTB 1
11+45.3 EOS

SEE THE ATTACHED LEGAL DESCRIPTION

Note: All bearings recited herein are based on the New Mexico State Plane Coordinate System, NAD 83, New Mexico East Zone 3001, US Survey Feet, all distances are grid.

I, B.L. Laman, New Mexico PLS No. 22404, hereby certify this survey to reflect an actual survey made on the ground under my supervision. This survey meets the minimum standards for surveying in New Mexico.

B.L. Laman PLS #22404
Date Signed: 09-21-2016
571 STATE STREET JASPER, TX.
(409) 202-5111 75951
Employee of Horizonrow, LLC



HORIZON ROW LLC

Drawn for:

devon

Drawn by:
K.MORGAN

Date: 09/17/2015

DEVON ENERGY PRODUCTION COMPANY, L.P.
SEA WOLF 1-12 BS CTB 1
BATTERY CONNECT
(GAS/WATER)
PROPOSED 30' EASEMENT
ON THE PROPERTY OF
BUREAU OF LAND MANAGEMENT
SECTION 1, T26S-R33E, N.M.P.M.

LINE NUMBER:

WBS NUMBER:
CC-110933.01

SCALE:
1" = 1000'

REVISIONS:
9/19/16 CMAAS

SHEET:
4 OF 8

0 1000 2000

**SECTION 1, T26S-R33E, N.M.P.M.,
LEA COUNTY, NEW MEXICO**

LEGAL DESCRIPTION

FOR

DEVON ENERGY PRODUCTION COMPANY, L.P.

BUREAU OF LAND MANAGEMENT

30' EASEMENT DESCRIPTION:

BEING an easement thirty (30) feet in width lying fifteen (15) feet on the right side and fifteen (15) feet on the left side of the survey centerline described below, being out of the northeast quarter (NE ¼) of Section 1, Township 26 South, Range 33 East, N.M.P.M., Lea County, New Mexico, and being out of a parcel of land owned by the Bureau of Land Management. Said centerline of easement being more particularly described as follows:

Commencing from a 1" iron pipe w/ BC 1913 for the north quarter corner of Section 1, T26S-R33E, N.M.P.M., Lea County, New Mexico;

Thence S 38°25'48" E a distance of 338.80' to the **Point of Beginning** of this easement having coordinates of Northing=393415.68, Easting=791580.64 feet and continuing the following courses;

Thence S 32°14'20" E a distance of 310.38' to an angle point;

Thence S 57°45'23" W a distance of 392.80' to an angle point;

Thence S 00°24'36" E a distance of 412.12' to an angle point;

Thence S 89°33'06" W a distance of 29.97' to the **Point of Ending** having coordinates of Northing=392531.24, Easting=791386.97 in the northeast quarter of Section 1, T26S-R33E, from said point a 1" iron pipe w/ BC 1913 for the west quarter corner of Section 1, T26S-R33E bears S 60°13'52" W a distance of 3042.22', covering **1145.27' or 69.41 rods** and having an area of **0.789 acres**.

20' TEMPORARY WORKSPACE DESCRIPTION:

Being a temporary workspace twenty (20) feet in width lying on the left side and adjoining the left side of the above described thirty (30) feet easement, having a total area of **0.559 acres**.

30' X 50' SURFACE SITE EASEMENT DESCRIPTION:

Being a surface site easement thirty (30) feet in width and fifty (50) feet in length and out of the northeast quarter (NE ¼) of Section 1, T26S-R33E, N.M.P.M. Lea County, New Mexico, and being more particularly described as follows;

Commencing from a 1" iron pipe w/ BC 1913 for the north quarter corner of Section 1, T26S-R33E, N.M.P.M., Lea County, New Mexico;


Thence S 41°24'08" E a distance of 326.18' to the **Point of Beginning** of this surface site and continuing the following courses;

S 31°27'53" E a distance of 30.00' to a point;
S 58°32'07" W a distance of 50.00' to a point;
N 31°27'53" W a distance of 30.00' to a point;
N 58°32'07" E a distance of 50.00' to the point of beginning, having an area
of **0.034 acre.**

NOTES:

Bearings, distances and coordinates shown herein are based on New Mexico State Plane Coordinate System, NAD 83, East Zone 3001, US Survey Feet, all distances are grid.

I, B.L. Laman, New Mexico PLS No. 22404, hereby certify this survey to reflect an actual survey made on the ground under my supervision. This survey meets the minimum standards for surveying in New Mexico.



B.L. Laman PLS 22404

Date Signed: 09/21/2016

Horizon Row, LLC

571 State Street, Jasper, TX

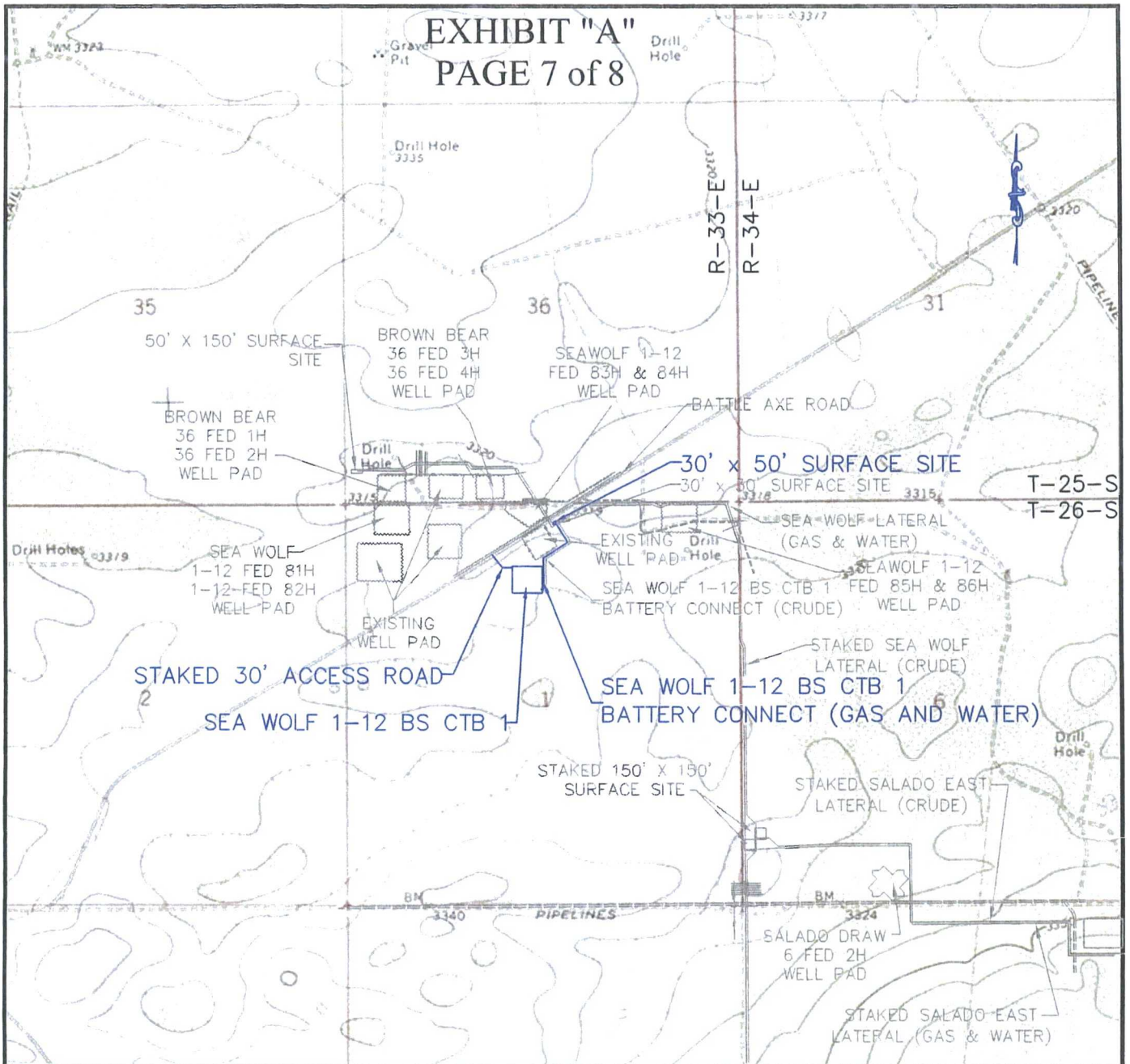
(409) 202-5111 75951

Employee of Horizon Row, LLC



EXHIBIT "A"

PAGE 7 of 8



QUAD MAP

SECTION 1, T26S-R33E, N.M.P.M.;

LEA COUNTY, NEW MEXICO

HORIZON ROW LLC

DEVON ENERGY PRODUCTION CO., L.P.

PROPOSED 30' EASEMENT

Drawn by:
K.MORGAN

Date: 09/18/2015

Drawn for:



LINE NUMBER:

WBS NUMBER:
CC-110933.01

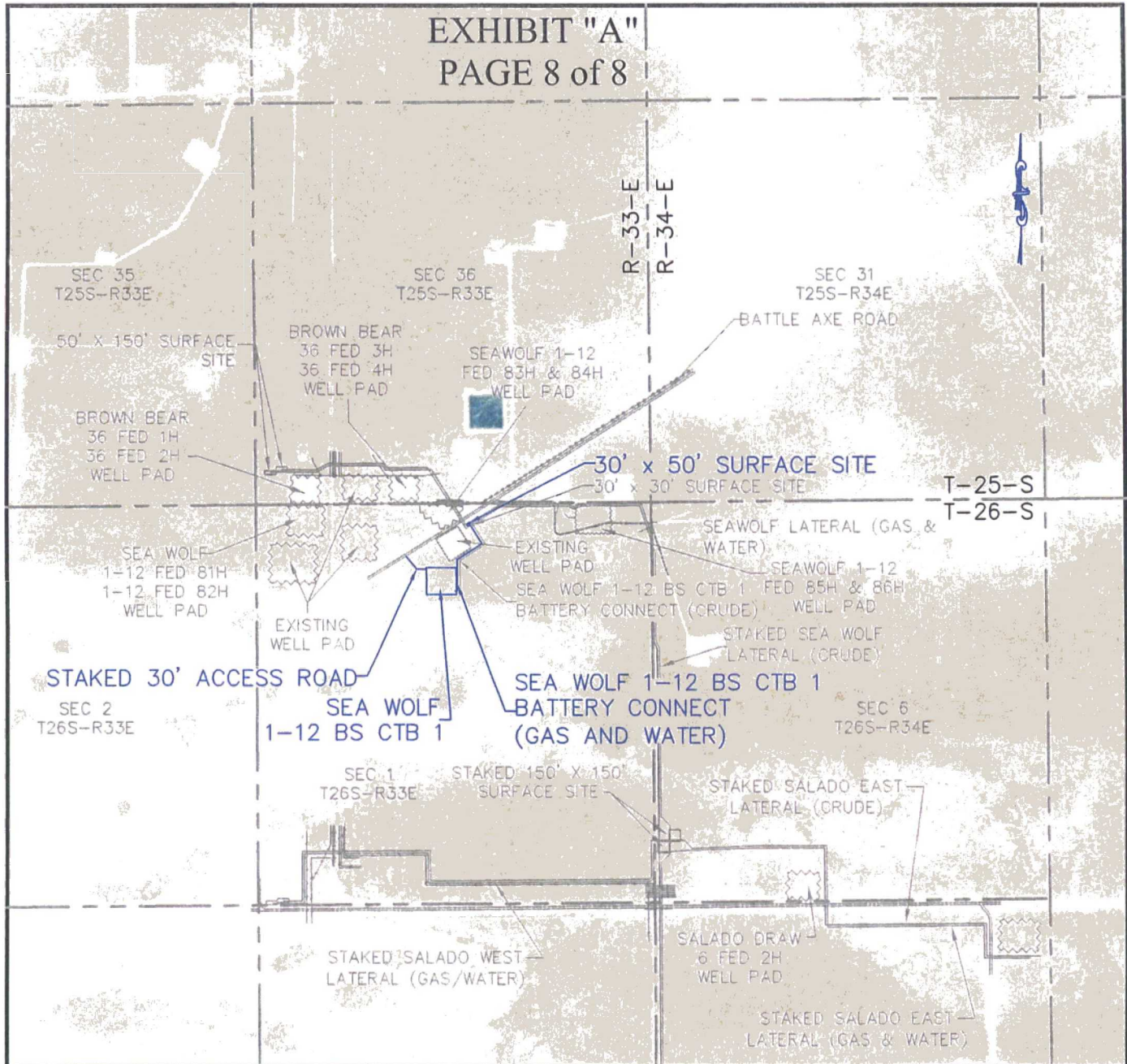
SCALE:
1" = 2000'

REVISIONS:
9/19/16 CMAAS

SHEET:
7 OF 8

EXHIBIT "A"

PAGE 8 of 8



AERIAL MAP

SECTION 1, T26S-R33E, N.M.P.M.;

LEA COUNTY, NEW MEXICO

HORIZON ROW LLC

DEVON ENERGY PRODUCTION CO., L.P.

PROPOSED 30' EASEMENT

Drawn by:
K.MORGAN

Date: 07/09/2015

Drawn for:



LINE NUMBER:

WBS NUMBER:
CC-110933.01

SCALE:
1" = 2000'

REVISIONS:
9/19/16 CMAAS

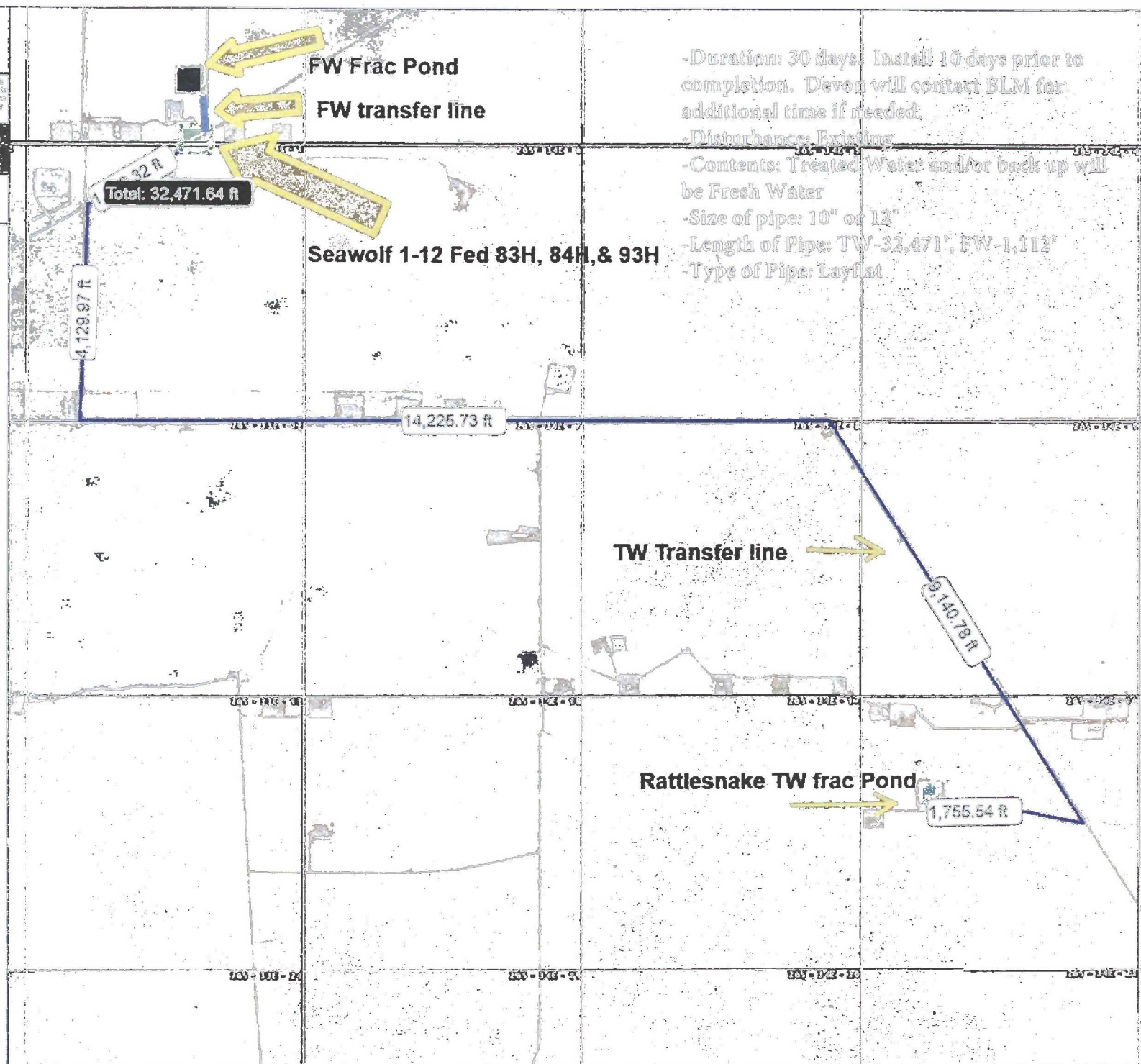
SHEET:
8 OF 8



This map is for informational purposes only and is not intended to be used as a warranty, representation, or guarantee of any kind regarding the map.

WGS_1984_Web_Mercator_Auxiliary_Sphere
Prepared by: User
Map is current as of: 20-Oct-2016

Miles
0 0.10 0.20 0.50 1:20,457



-Duration: 30 days. Install 10 days prior to completion. Devon will contact BLM for additional time if needed.

-Disturbance: Existing

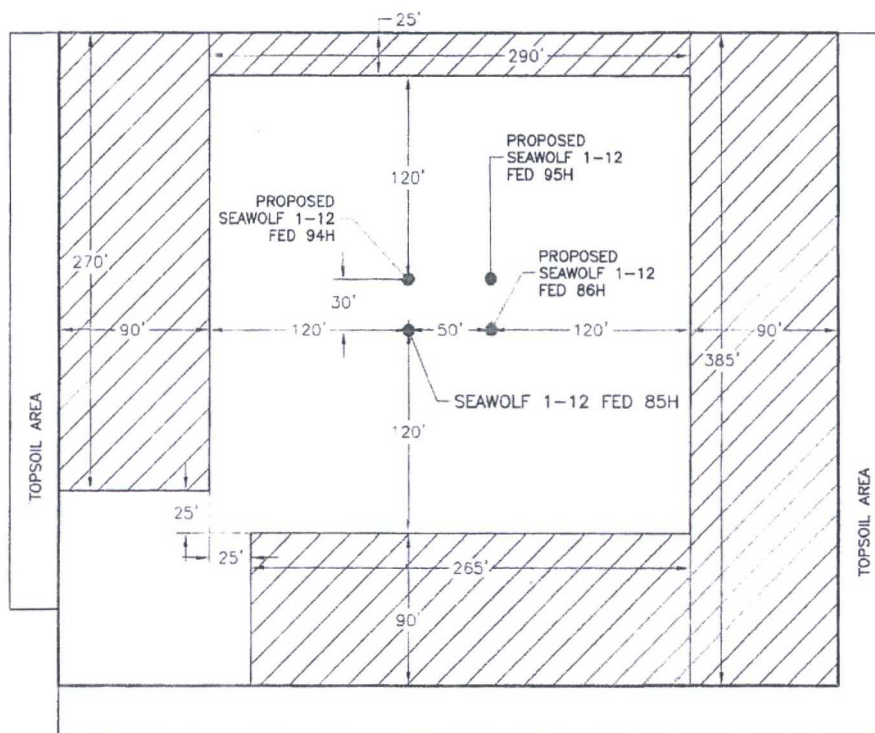
-Contents: Treated Water and/or back up will be Fresh Water

-Size of pipe: 10" or 12"

-Length of Pipe: TW-32,471', FW-1,112'

-Type of Pipe: Layflat

**PROPOSED INTERIM SITE RECLAMATION
FOR SEAWOLF 1-12 FED 85H
SECTION 1, TOWNSHIP 26 SOUTH, RANGE 33 EAST, N.M.P.M.
LEA COUNTY, STATE OF NEW MEXICO**



 DENOTES
RECLAMATION AREA
2.070± ACRES RECLAMATION AREA



0 10 50 100 200
SCALE 1" = 100'

DEVON ENERGY PRODUCTION COMPANY, L.P.
SEAWOLF 1-12 FED 85H
 LOCATED 200 FT. FROM THE NORTH LINE
 AND 800 FT. FROM THE EAST LINE OF
 SECTION 1, TOWNSHIP 26 SOUTH,
 RANGE 33 EAST, N.M.P.M.
 LEA COUNTY, STATE OF NEW MEXICO

OCTOBER 4, 2016

SURVEY NO. 4803A

MADRON SURVEYING, INC. 301 SOUTH CANAL (575) 234-3341 CARLSBAD, NEW MEXICO