

District I
1625 N. French Dr., Hobbs, NM 88240
Phone: (575) 393-6161 Fax: (575) 393-0720
District II
811 S. First St., Artesia, NM 88210
Phone: (575) 748-1283 Fax: (575) 748-9720
District III
1000 Rio Brazos Road, Aztec, NM 87410
Phone: (505) 334-6178 Fax: (505) 334-6170
District IV
1220 S. St. Francis Dr., Santa Fe, NM 87505
Phone: (505) 476-3460 Fax: (505) 476-3462

State of New Mexico
Energy, Minerals & Natural Resources Department
OIL CONSERVATION DIVISION
1220 South St. Francis Dr.
Santa Fe, NM 87505

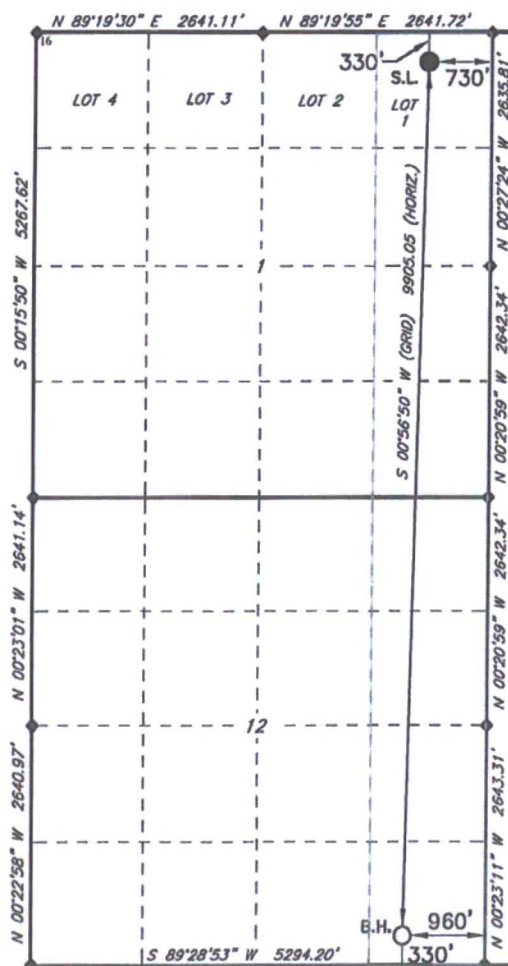
Form C-11
Revised August 1, 20
Submit one copy to appropriate
District Office

☐ AMENDED REPORT

WELL LOCATION AND ACREAGE DEDICATION PLAT

¹ API Number 30-025- 47738		² Pool Code 17644		³ Pool Name Diamondtail; Bone Spring					
⁴ Property Code 317588		⁵ Property Name CORIANDER AOC 1-12 STATE						⁶ Well Number 3H	
⁷ GRID NO. 215099		⁸ Operator Name CIMAREX ENERGY COMPANY						⁹ Elevation 3752'	
¹⁰ Surface Location									
UL or lot no. 1	Section 1	Township 23S	Range 32E	Lot Idn	Feet from the 330	North/South line NORTH	Feet From the 730	East/West line EAST	County LEA
¹¹ Bottom Hole Location If Different From Surface									
UL or lot no. P	Section 12	Township 23S	Range 32E	Lot Idn	Feet from the 330	North/South line SOUTH	Feet from the 960	East/West line EAST	County LEA
¹² Dedicated Acres 319.95		¹³ Joint or Infill		¹⁴ Consolidation Code		¹⁵ Order No.			

No allowable will be assigned to this completion until all interest have been consolidated or a non-standard unit has been approved by the division.



GEODETIC DATA
NAD 83 GRID - NM EAST

SURFACE LOCATION
N: 488209.4 - E: 760984.1
LAT: 32.34015430° N
LONG: 103.62213822° W
LAT: 32°20'24.5581" N
LONG: 103°37'19.6981" W

BOTTOM HOLE
N: 478307.8 - E: 760820.4
LAT: 32.31294116° N
LONG: 103.62288089° W
LAT: 32°18'46.5882" N
LONG: 103°37'22.3712" W

GEODETIC DATA
NAD 27 GRID - NM EAST

SURFACE LOCATION
N: 488149.4 - E: 719801.1
LAT: 32.34003099° N
LONG: 103.62185426° W
LAT: 32°20'24.1116" N
LONG: 103°37'17.9554" W

BOTTOM HOLE
N: 478248.1 - E: 719637.2
LAT: 32.31281786° N
LONG: 103.62239778° W
LAT: 32°18'46.1443" N
LONG: 103°37'20.6320" W

- = SURFACE HOLE LOCATION
- = BOTTOM HOLE LOCATION
- ◆ = SECTION CORNER LOCATED

0 500 1,000 2,000 Feet

17 OPERATOR CERTIFICATION

I hereby certify that the information contained herein is true and complete to the best of my knowledge and belief, and that this organization either owns a working interest or unleased mineral interest in the land including the proposed bottom hole location or has a right to drill this well at this location pursuant to a contract with an owner of such a mineral or working interest, or to a voluntary pooling agreement or a compulsory pooling order heretofore entered by the division.

Amithy Crawford 4/3/2017
Signature Date
Amithy Crawford
Printed Name

acrawford@cimarex.com
E-mail Address

18 SURVEYOR CERTIFICATION

I hereby certify that the well location shown on this plat was plotted from field notes of actual surveys made by me or under my supervision, and that the same is true and correct to the best of my belief.

3-22-2017

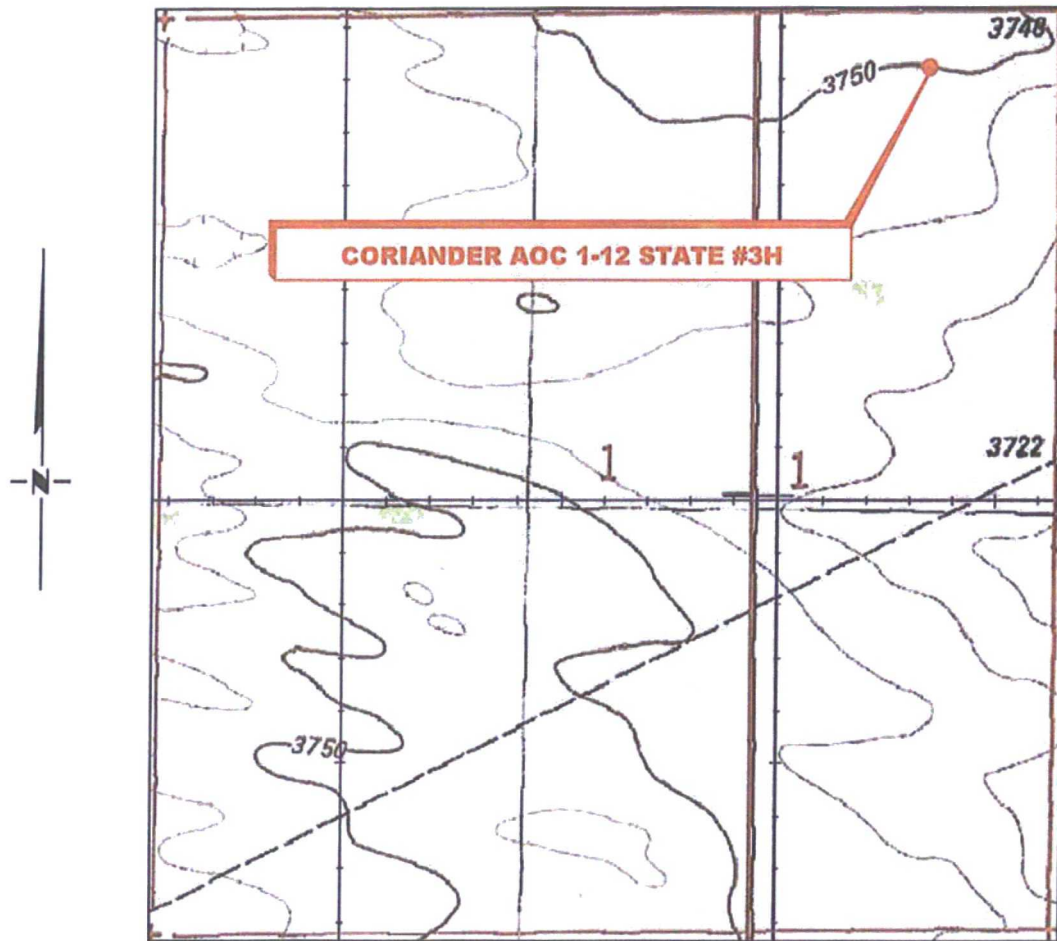
Date of Survey

Signature and Seal of Professional Surveyor

19680
Certificate Number

RRC-Job No.: LS1703167

LOCATION VERIFICATION MAP



*SECTION 1, TWP. 23 SOUTH, RGE. 32 EAST,
N. M. P. M., LEA COUNTY, NEW MEXICO*

OPERATOR: Cimarex Energy CO.
LEASE: Coriander AOC 1-12 State
WELL NO.: 3H
ELEVATION: 3752'

LOCATION: 330' FNL & 730' FEL
CONTOUR INTERVAL: 10'
USGS TOPO. SOURCE MAP:
Tip Top Wells, NM (1984)

Firm No.: TX 10193838 NM 4655451

Copyright 2016 - All Rights Reserved

NO.	REVISION	DATE
JOB NO.:	LS1703167	
DWG. NO.:	1703167LVM	

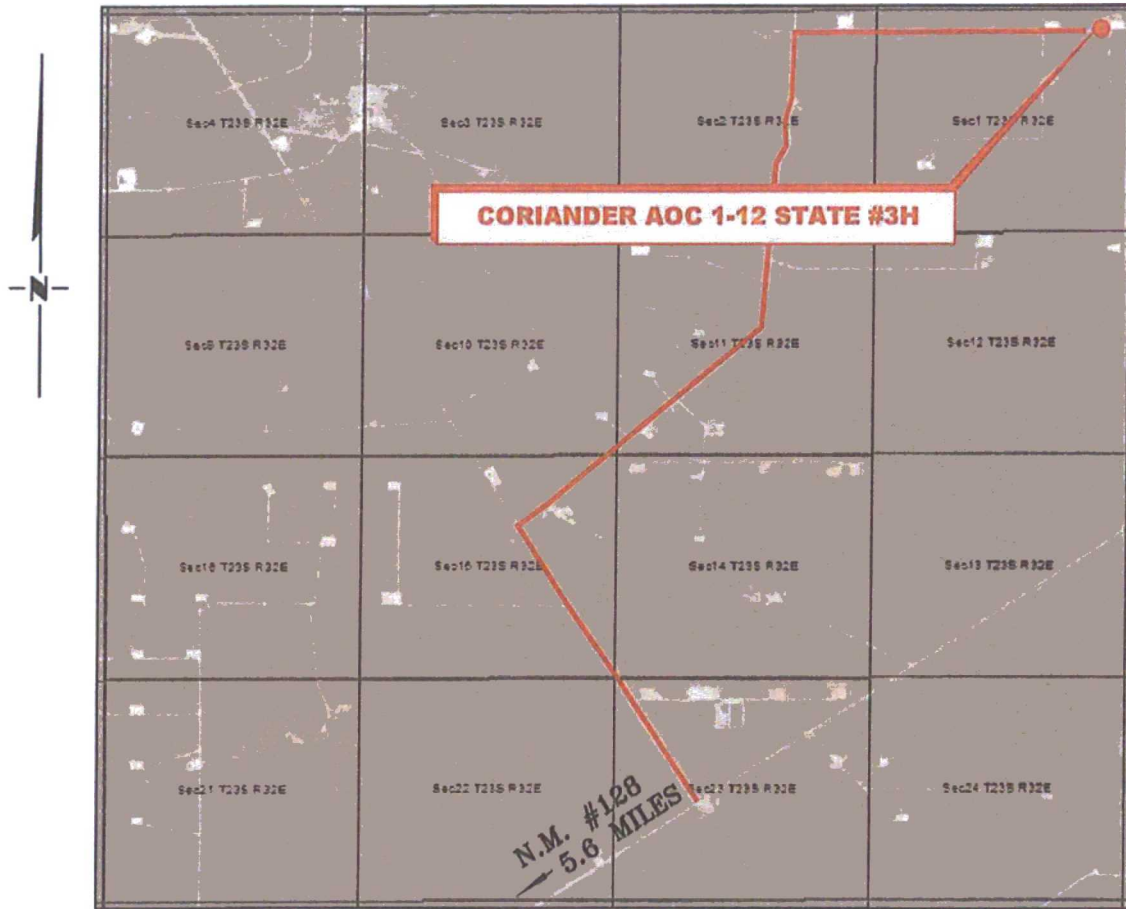


308 W. BROADWAY ST., HOBBS, NM 88240 (575) 964-8200

SCALE:	1" = 1000'
DATE:	3-22-2017
SURVEYED BY:	JM/AB
DRAWN BY:	LPS
APPROVED BY:	RMH
SHEET:	1 OF 1

VICINITY MAP

NOT TO SCALE



DIRECTIONS TO LOCATION

From the intersection of NM-128 (Jal Hwy.) and Buck Jackson Rd.;
 Go Northwest on NM-128 approx. 0.7 miles to a lease road on the right;
 Turn right and go Northeast approx. 5.6 miles to a lease road on the left;
 Turn left and go Northwest approx. 1.4 miles to a lease road on the right;
 Turn right and go Northeast approx. 1.3 miles to a curve to the left;
 Take curve to the left and go North approx. 1.4 miles to a lease road on the right;
 Turn right and go East approx. 1.3 miles to location on the left.

**SECTION 1, TWP. 23 SOUTH, RGE. 32 EAST,
 N. M. P. M., LEA COUNTY, NEW MEXICO**

OPERATOR: Cimarex Energy CO.

LOCATION: 330' FNL & 730' FEL

LEASE: Coriander AOC 1-12 State

ELEVATION: 3752'

WELL NO.: 3H

Firm No.: TX 10193838 NM 4655451

Copyright 2016 - All Rights Reserved

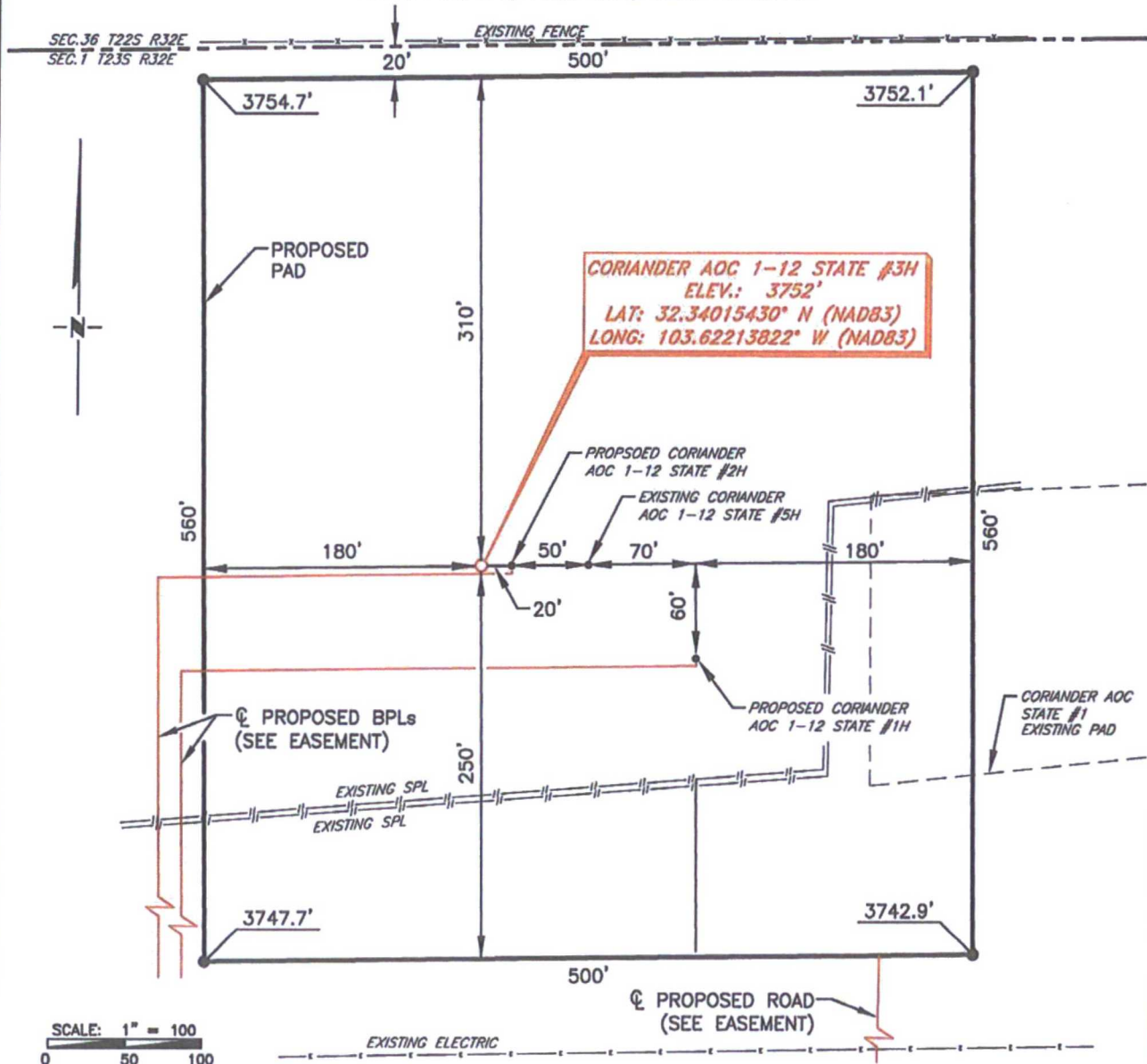
NO.	REVISION	DATE
JOB NO.:	LS1703167	
DWG. NO.:	1703167VM	

RRC

308 W. BROADWAY ST., HOBBS, NM 88240 (575) 964-8200

SCALE: N. T. S.
 DATE: 3-22-2017
 SURVEYED BY: JM/AB
 DRAWN BY: LPS
 APPROVED BY: RMH
 SHEET: 1 OF 1

CIMAREX ENERGY COMPANY
CORIANDER AOC 1-12 STATE #2H
(330' FNL & 730' FEL)
SECTION 1, T23S, R32E
N. M. P. M., LEA CO., NEW MEXICO



BEARINGS ARE GRID NAD 83
 NM EAST
 DISTANCES ARE HORIZ. GROUND.

LOCATION LAYOUT

Firm No.: TX 10193838 NM 4655451

Copyright 2016 - All Rights Reserved

NO.	REVISION	DATE
JOB NO.:	LS1703167	
DWG. NO.:	1703167PAD	

RRC

308 W. BROADWAY ST., HOBBS, NM 88240 (575) 964-8200

SCALE: 1" = 100'
DATE: 3-22-2017
SURVEYED BY: JM/AB
DRAWN BY: LPS
APPROVED BY: RMH
SHEET: 1 OF 1