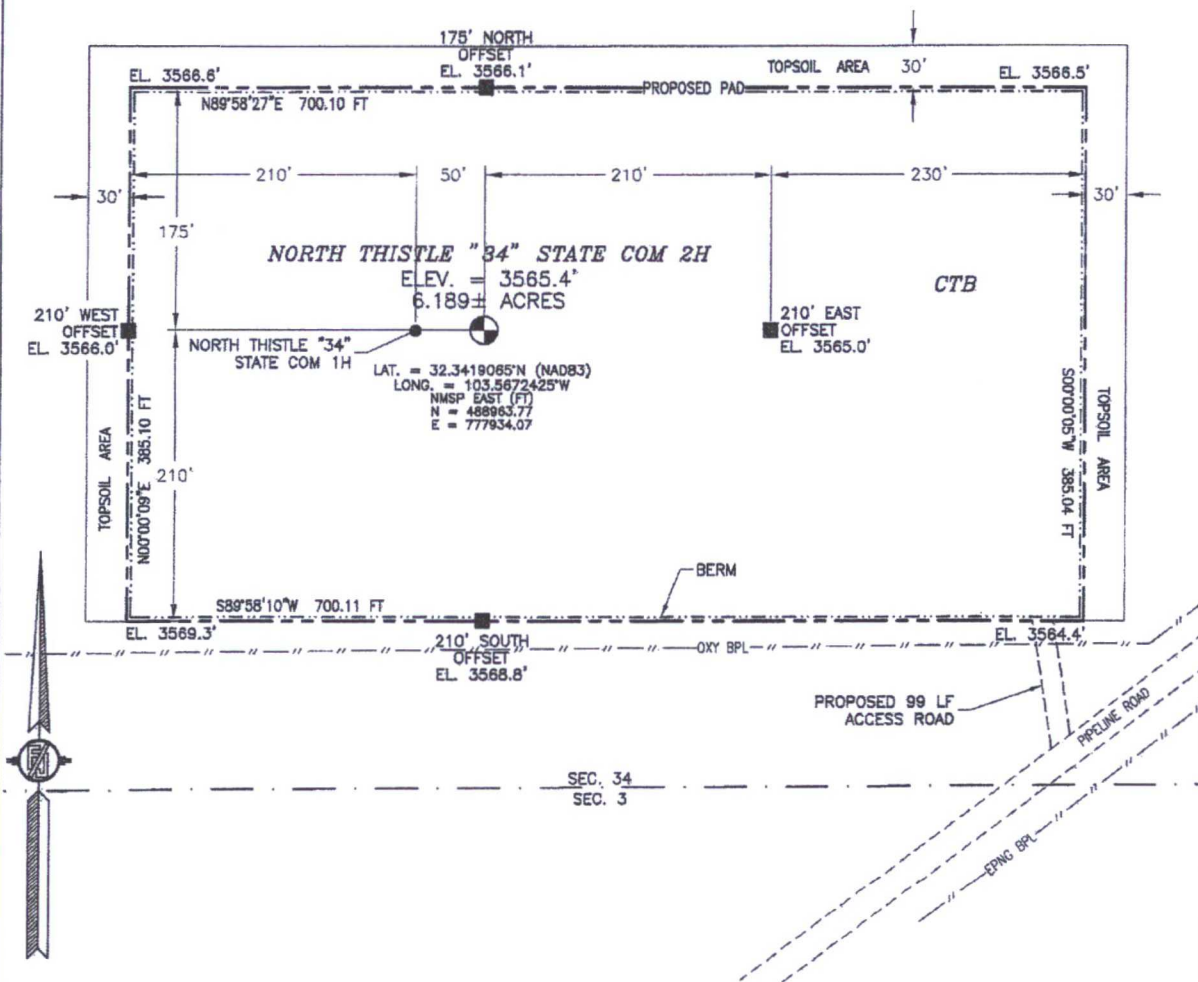


SECTION 34, TOWNSHIP 22 SOUTH, RANGE 33 EAST, N.M.P.M.  
LEA COUNTY, STATE OF NEW MEXICO

SITE MAP

NOTE: LATITUDE AND LONGITUDE COORDINATES ARE SHOWN USING THE NORTH AMERICAN DATUM OF 1983 (NAD83). LISTED NEW MEXICO STATE PLANE EAST COORDINATES ARE GRID (NAD83). BASIS OF BEARING AND DISTANCES USED ARE NEW MEXICO STATE PLANE EAST COORDINATES MODIFIED TO THE SURFACE



0 12 60 120 240

SCALE 1" = 120'

DIRECTIONS TO LOCATION

FROM THE INTERSECTION OF STATE HIGHWAY 128 AND CR 21 (DELAWARE BASIN ROAD) GO NORTH ON CR 21 APPROX. 8.0 MILES TO A LEASE ROAD ON LEFT (WEST), TURN WEST ON LEASE ROAD GO APPROX. 2.3 MILES TO A LEASE ROAD ON RIGHT (NORTH), TURN NORTH ON LEASE ROAD GO APPROX. 2.0 MILES TO A FRAC POND, CONTINUE NORTH PASS FRAC POND GO APPROX. 0.3 OF A MILE TO A LEASE ROAD ON LEFT (WEST), TURN WEST ON LEASE ROAD GO APPROX. 0.7 OF A MILE, ROAD TURNS LEFT (SOUTH), GO SOUTH APPROX. 0.1 OF A MILE TO A ROAD LATH WITH ORANGE FLAGGING ON RIGHT (WEST), FOLLOW ROAD LATH APPROX. 0.8 OF A MILE TO EXISTING PIPELINE ROAD. TURN RIGHT (NORTHEAST) ON EXISTING PIPELINE ROAD GO APPROX. 0.3 OF A MILE TO ROAD LATH RED & WHITE PAINT. GO NORTH APPROX. 99' TO THE SOUTHEAST PAD CORNER FOR THIS LOCATION.

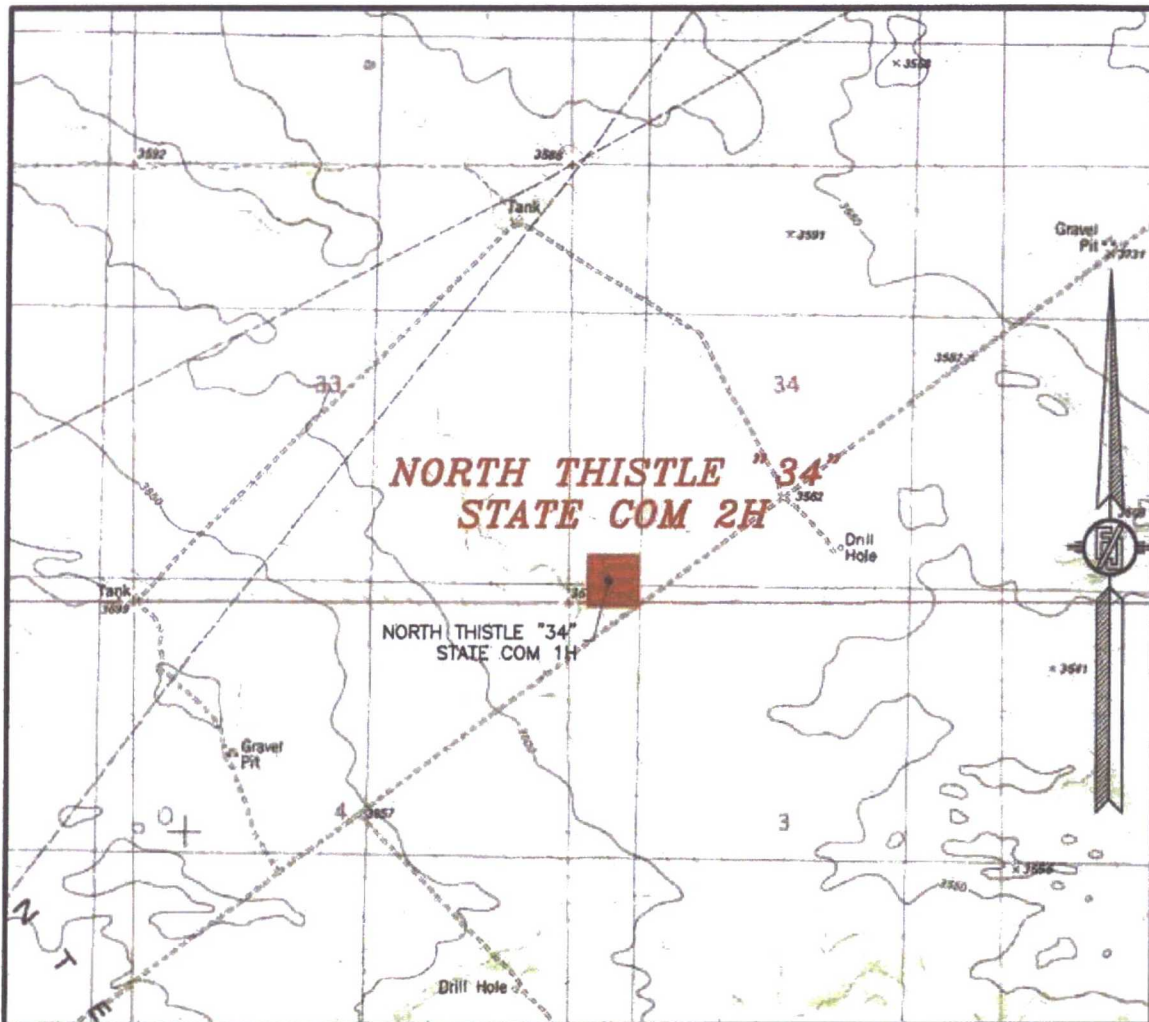
DEVON ENERGY PRODUCTION COMPANY, L.P.  
**NORTH THISTLE "34" STATE COM 2H**  
LOCATED 330 FT. FROM THE SOUTH LINE  
AND 485 FT. FROM THE WEST LINE OF  
SECTION 34, TOWNSHIP 22 SOUTH,  
RANGE 33 EAST, N.M.P.M.  
LEA COUNTY, STATE OF NEW MEXICO

JUNE 17, 2015

SURVEY NO. 4075

MADRON SURVEYING, INC. 301 SOUTH CANAL (575) 234-3341 CARLSBAD, NEW MEXICO

SECTION 34, TOWNSHIP 22 SOUTH, RANGE 33 EAST, N.M.P.M.  
LEA COUNTY, STATE OF NEW MEXICO  
LOCATION VERIFICATION MAP



USGS QUAD MAP:  
TIP TOP WELLS

NOT TO SCALE

DEVON ENERGY PRODUCTION COMPANY, L.P.  
**NORTH THISTLE "34" STATE COM 2H**  
LOCATED 330 FT. FROM THE SOUTH LINE  
AND 485 FT. FROM THE WEST LINE OF  
SECTION 34, TOWNSHIP 22 SOUTH,  
RANGE 33 EAST, N.M.P.M.  
LEA COUNTY, STATE OF NEW MEXICO

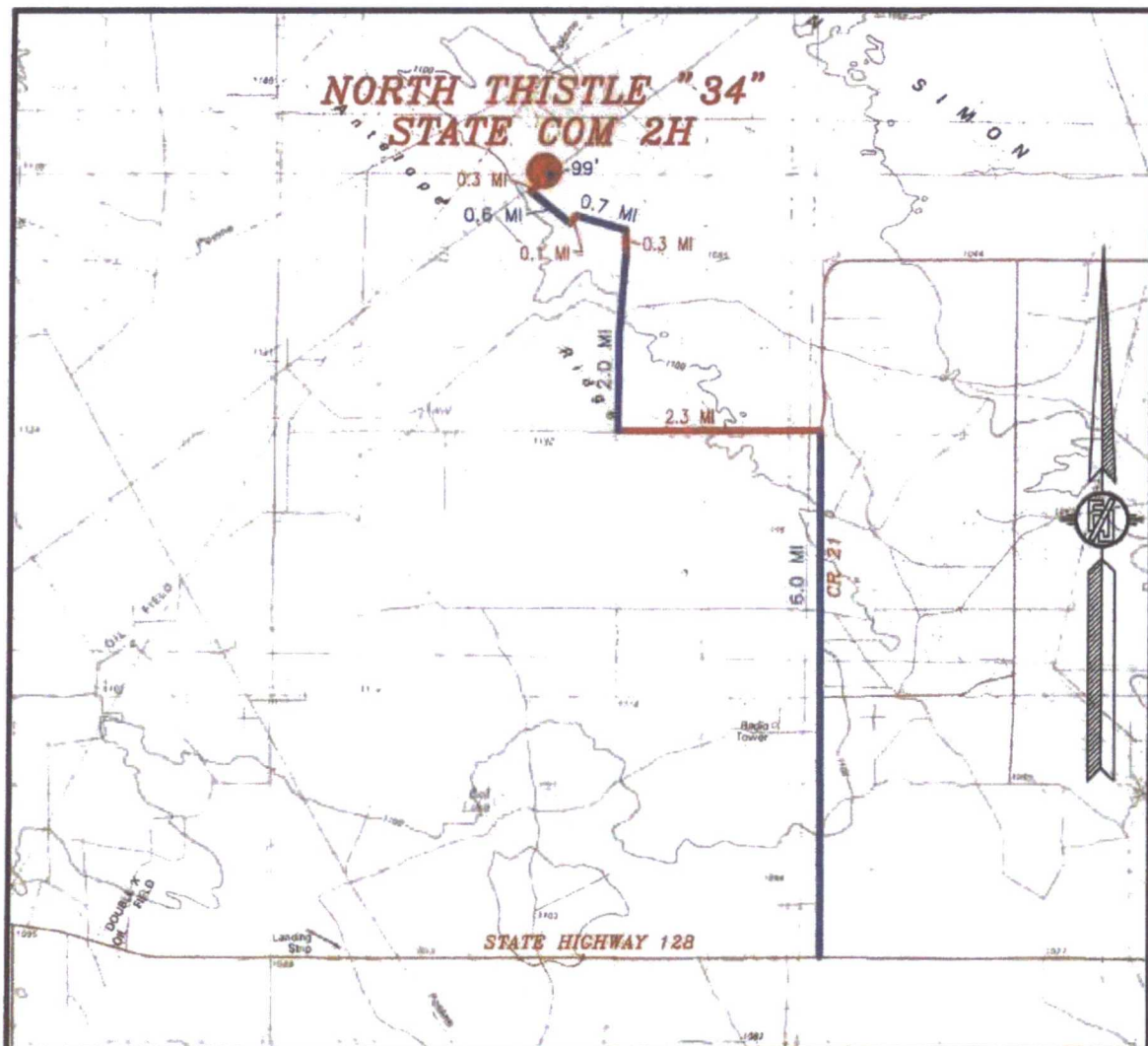
JUNE 17, 2015

SURVEY NO. 4075

MADRON SURVEYING, INC. 301 SOUTH CANAL (575) 234-3341 CARLSBAD, NEW MEXICO



SECTION 34, TOWNSHIP 22 SOUTH, RANGE 33 EAST, N.M.P.M.  
LEA COUNTY, STATE OF NEW MEXICO  
VICINITY MAP



DISTANCES IN MILES

NOT TO SCALE

DEVON ENERGY PRODUCTION COMPANY, L.P.  
**NORTH THISTLE "34" STATE COM 2H**  
LOCATED 330 FT. FROM THE SOUTH LINE  
AND 485 FT. FROM THE WEST LINE OF  
SECTION 34, TOWNSHIP 22 SOUTH,  
RANGE 33 EAST, N.M.P.M.  
LEA COUNTY, STATE OF NEW MEXICO

JUNE 17, 2015

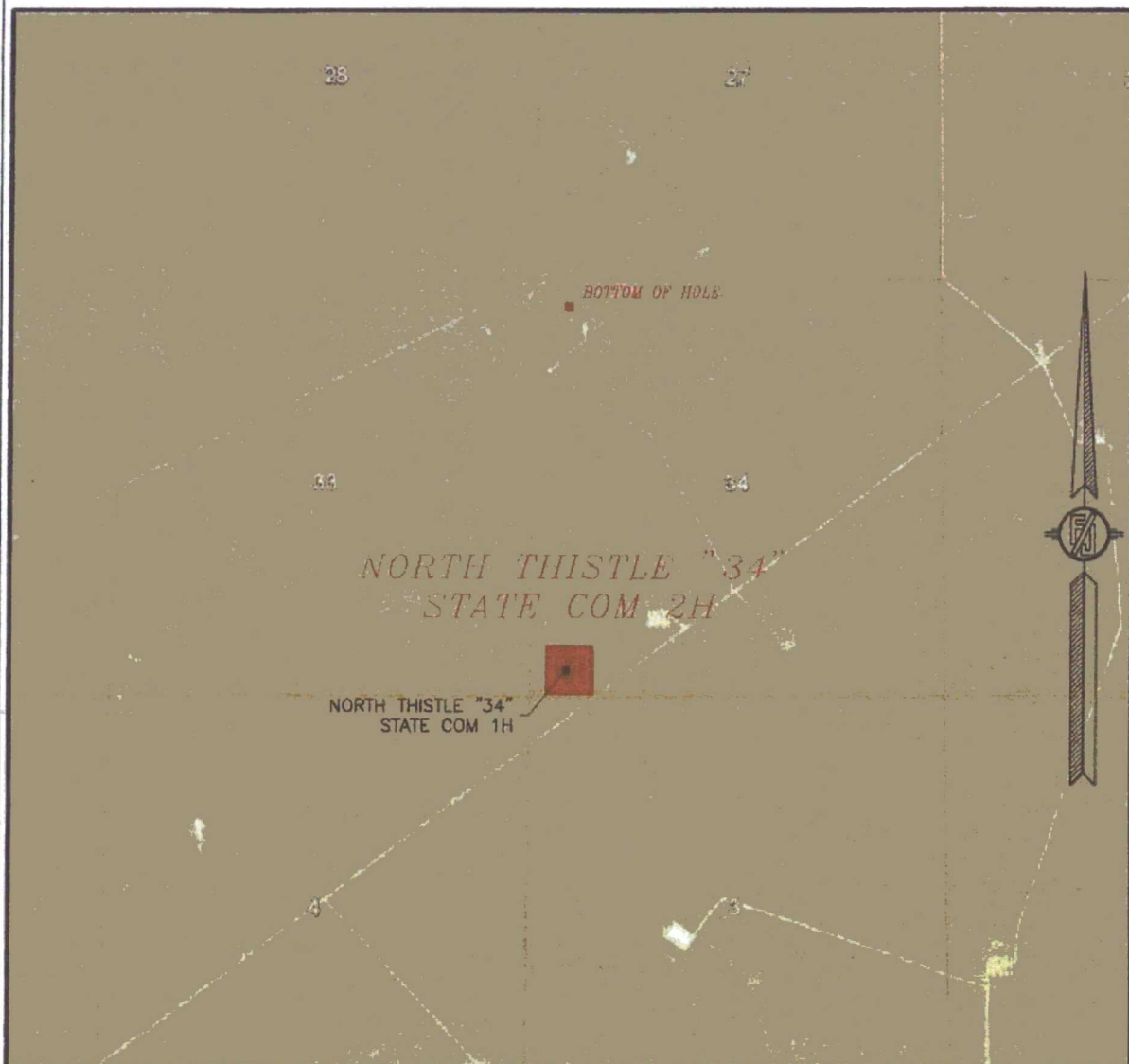
**DIRECTIONS TO LOCATION**

FROM THE INTERSECTION OF STATE HIGHWAY 128 AND CR 21 (DELAWARE BASIN ROAD) GO NORTH ON CR 21 APPROX. 6.0 MILES TO A LEASE ROAD ON LEFT (WEST), TURN WEST ON LEASE ROAD GO APPROX. 2.3 MILES TO A LEASE ROAD ON RIGHT (NORTH), TURN NORTH ON LEASE ROAD GO APPROX. 2.0 MILES TO A FRAC POND, CONTINUE NORTH PASS FRAC POND GO APPROX. 0.3 OF A MILE TO A LEASE ROAD ON LEFT (WEST), TURN WEST ON LEASE ROAD GO APPROX. 0.7 OF A MILE, ROAD TURNS LEFT (SOUTH), GO SOUTH APPROX. 0.1 OF A MILE TO A ROAD LATH WITH ORANGE FLAGGING ON RIGHT (WEST), FOLLOW ROAD LATH APPROX. 0.6 OF A MILE TO EXISTING PIPELINE ROAD. TURN RIGHT (NORTHEAST) ON EXISTING PIPELINE ROAD GO APPROX. 0.3 OF A MILE TO ROAD LATH RED & WHITE PAINT. GO NORTH APPROX. 99' TO THE SOUTHEAST PAD CORNER FOR THIS LOCATION.

SURVEY NO. 4075

MADRON SURVEYING, INC. 301 SOUTH CANAL CARLSBAD, NEW MEXICO  
(575) 234-3341

SECTION 34, TOWNSHIP 22 SOUTH, RANGE 33 EAST, N.M.P.M.  
LEA COUNTY, STATE OF NEW MEXICO  
**AERIAL PHOTO**



NOT TO SCALE  
AERIAL PHOTO:  
GOOGLE EARTH  
FEBRUARY 2014

DEVON ENERGY PRODUCTION COMPANY, L.P.  
**NORTH THISTLE "34" STATE COM 2H**  
LOCATED 330 FT. FROM THE SOUTH LINE  
AND 485 FT. FROM THE WEST LINE OF  
SECTION 34, TOWNSHIP 22 SOUTH,  
RANGE 33 EAST, N.M.P.M.  
LEA COUNTY, STATE OF NEW MEXICO

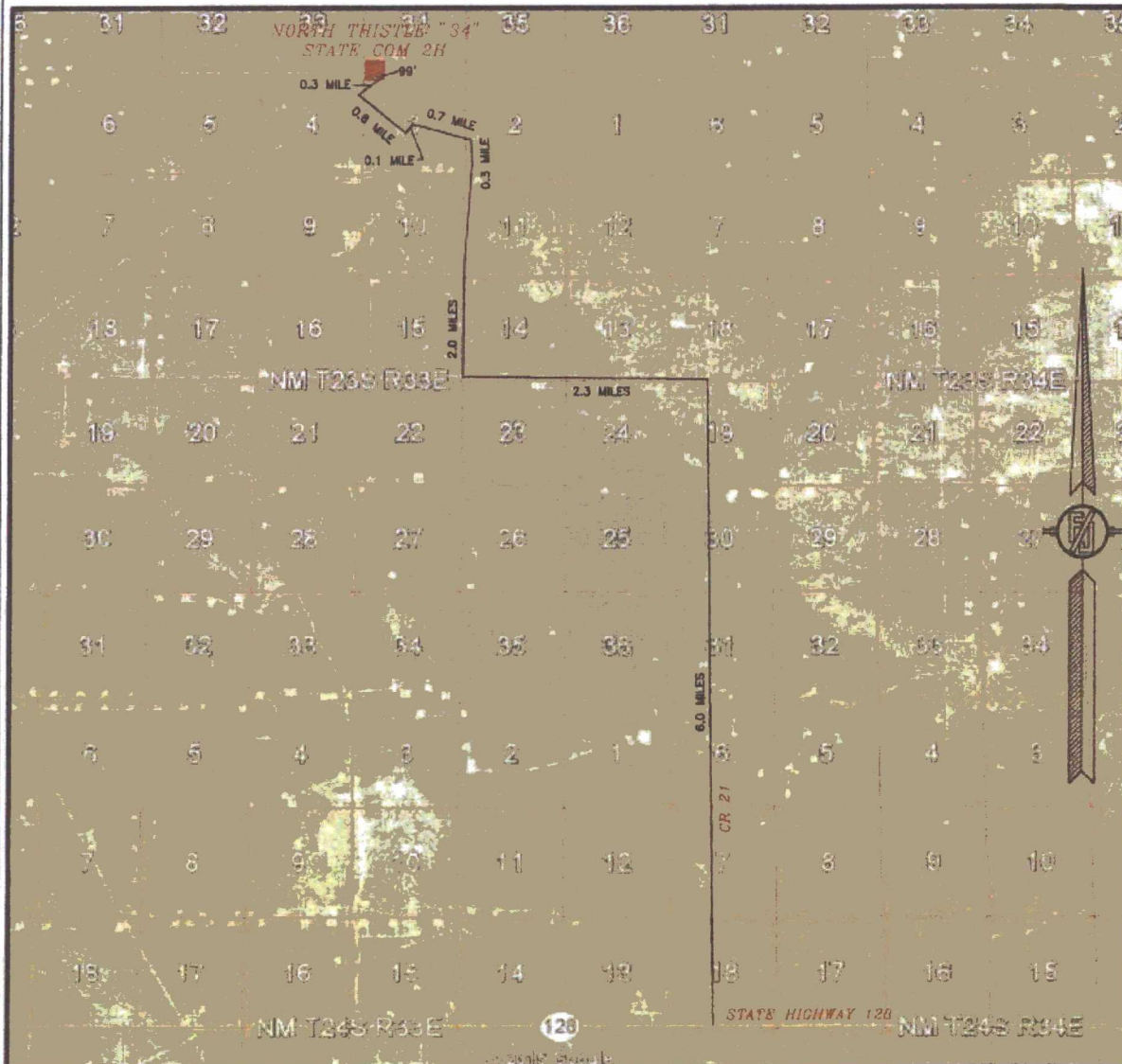
JUNE 17, 2015

SURVEY NO. 4075

MADRON SURVEYING, INC. 301 SOUTH CAHAL (575) 234-3341 CARLSBAD, NEW MEXICO



SECTION 34, TOWNSHIP 22 SOUTH, RANGE 33 EAST, N.M.P.M.  
LEA COUNTY, STATE OF NEW MEXICO  
**ACCESS AERIAL ROUTE MAP**



NOT TO SCALE  
AERIAL PHOTO:  
GOOGLE EARTH  
FEBRUARY 2014

**DEVON ENERGY PRODUCTION COMPANY, L.P.**  
**NORTH THISTLE "34" STATE COM 2H**  
LOCATED 330 FT. FROM THE SOUTH LINE  
AND 485 FT. FROM THE WEST LINE OF  
SECTION 34, TOWNSHIP 22 SOUTH,  
RANGE 33 EAST, N.M.P.M.  
LEA COUNTY, STATE OF NEW MEXICO

JUNE 17, 2015

SURVEY NO. 4075

MADRON SURVEYING, INC. 301 SOUTH CANAL (575) 234-3341 CARLSBAD, NEW MEXICO