

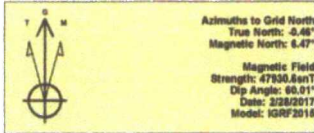
25-43650



Lea County, NM (NAD 27 NME)

Osprey 10 #602H

Plan #0.1



To convert a Magnetic Direction to a Grid Direction, Add 6.47"
 To convert a Magnetic Direction to a True Direction, Add 6.92"
 To convert a True Direction to a Grid Direction, Subtract 0.46"

PROJECT DETAILS: Lea County, NM (NAD 27 NME)

Geodetic System: US State Plane 1927 (Exact solution)
 Datum: NAD 1927 (NADCON CONUS)
 Ellipsoid: Clarke 1866
 Zone: New Mexico East 3001
 System Datum: Mean Sea Level

WELL DETAILS: #602H

Ground Level: 3334.0
 KB = 25 @ 3369.0anR
 Northing: 415426.00 Easting: 769622.00 Latitude: 32° 8' 20.792 N Longitude: 103° 27' 44.161 W

SECTION DETAILS

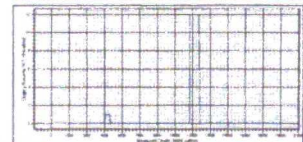
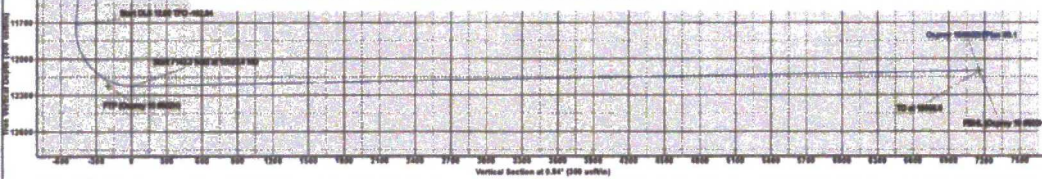
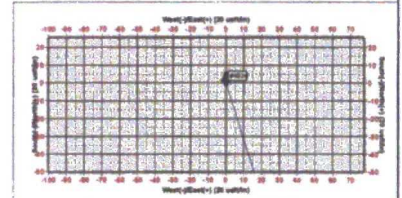
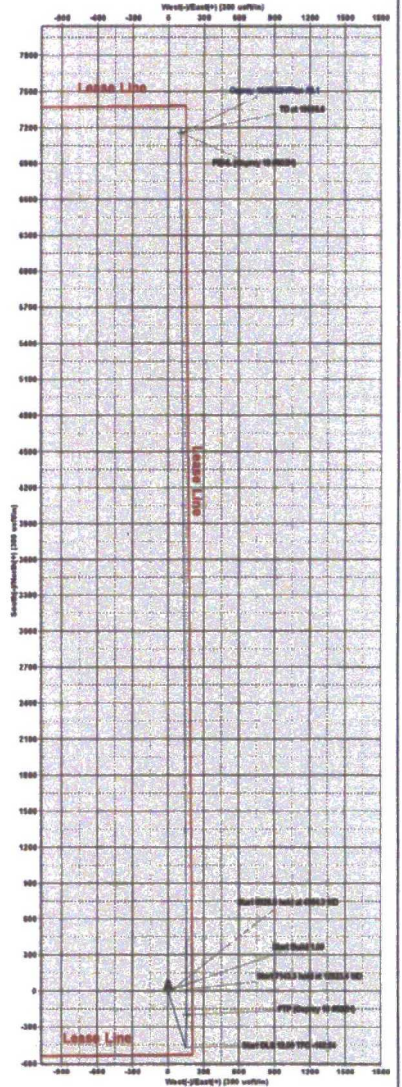
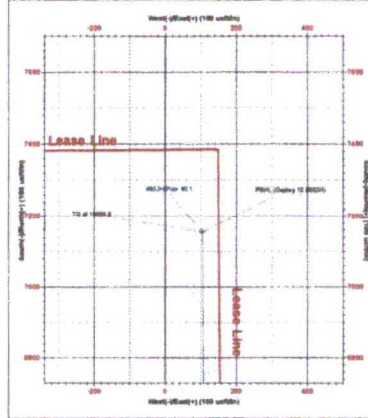
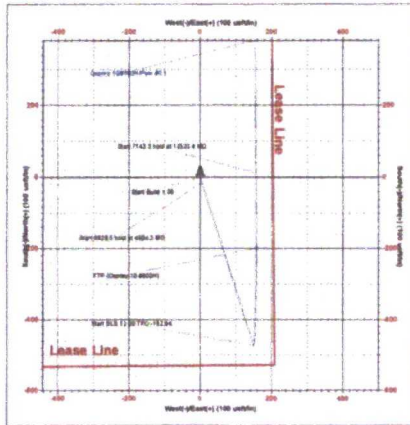
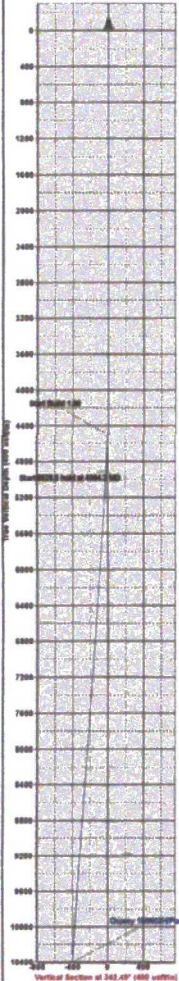
Sec	MD	Inc	Azi	TVD	+N-S	+E-W	Dleg	TFace	VSect	Target
1	0.0	0.00	0.00	0.0	0.0	0.0	0.00	0.00	0.0	
2	4500.0	0.00	0.00	4500.0	0.0	0.0	0.00	0.00	0.0	
3	4904.3	4.04	162.49	4904.0	-13.6	4.3	1.00	162.49	-13.5	
4	11732.8	4.04	162.49	11715.5	-472.8	149.2	0.00	0.00	-470.5	
5	12523.4	91.00	359.59	12225.0	12.0	156.5	12.00	-162.84	14.3	
6	19866.6	91.00	359.59	12100.3	7154.0	105.0	0.00	0.00	7154.8	PBHL (Osprey 10 #602H)

CASING DETAILS

No casing data is available.

WELLBORE TARGET DETAILS (MAP CO-ORDINATES)

Name	TVD	+N-S	+E-W	Northing	Easting
PBHL (Osprey 10 #602H)	12100.3	7154.0	105.0	416221.00	769727.00
FTP (Osprey 10 #602H)	12225.0	-106.0	182.0	416221.00	769700.00





EOG Resources - Midland

Lea County, NM (NAD 27 NME)

Osprey 10

#602H

OH

Plan: Plan #0.1

Standard Planning Report

28 February, 2017



EOG Resources, Inc.
Planning Report

Database: EDM 5000.1 Single User Db
Company: EOG Resources - Midland
Project: Lea County, NM (NAD 27 NME)
Site: Osprey 10
Well: #602H
Wellbore: OH
Design: Plan #0.1

Local Co-ordinate Reference: Well #602H
TVD Reference: KB = 25 @ 3359.0usft
MD Reference: KB = 25 @ 3359.0usft
North Reference: Grid
Survey Calculation Method: Minimum Curvature

Project	Lea County, NM (NAD 27 NME)		
Map System:	US State Plane 1927 (Exact solution)	System Datum:	Mean Sea Level
Geo Datum:	NAD 1927 (NADCON CONUS)		
Map Zone:	New Mexico East 3001		

Site	Osprey 10				
Site Position:		Northing:	415,103.00 usft	Latitude:	32° 8' 17.729 N
From:	Map	Easting:	768,701.00 usft	Longitude:	103° 27' 54.902 W
Position Uncertainty:	0.0 usft	Slot Radius:	13-3/16 "	Grid Convergence:	0.46 °

Well	#602H					
Well Position	+N-S	317.0 usft	Northing:	415,420.00 usft	Latitude:	32° 8' 20.792 N
	+E-W	921.0 usft	Easting:	769,622.00 usft	Longitude:	103° 27' 44.161 W
Position Uncertainty	0.0 usft		Wellhead Elevation:	0.0 usft	Ground Level:	3,334.0 usft

Wellbore	OH				
Magnetics	Model Name	Sample Date	Declination	Dip Angle	Field Strength
	IGRF2015	2/28/2017	(°) 6.93	(°) 60.01	(nT) 47,931

Design	Plan #0.1				
Audit Notes:					
Version:	Phase:	PLAN	Tie On Depth:	0.0	
Vertical Section:	Depth From (TVD)	+N-S	+E-W	Direction	
	(usft)	(usft)	(usft)	(°)	
	0.0	0.0	0.0	0.84	

Plan Sections										
Measured Depth (usft)	Inclination (°)	Azimuth (°)	Vertical Depth (usft)	+N-S (usft)	+E-W (usft)	Dogleg Rate (°/100usft)	Build Rate (°/100usft)	Turn Rate (°/100usft)	TFO (°)	Target
0.0	0.00	0.00	0.0	0.0	0.0	0.00	0.00	0.00	0.00	
4,500.0	0.00	0.00	4,500.0	0.0	0.0	0.00	0.00	0.00	0.00	
4,904.3	4.04	162.49	4,904.0	-13.6	4.3	1.00	1.00	0.00	162.49	
11,732.8	4.04	162.49	11,715.5	-472.8	149.2	0.00	0.00	0.00	0.00	
12,523.4	91.00	359.59	12,225.0	12.0	156.5	12.00	11.00	-20.61	-162.84	
19,666.6	91.00	359.59	12,100.3	7,154.0	105.0	0.00	0.00	0.00	0.00	PBHL (Osprey 10 #6C)



EOG Resources, Inc.

Planning Report

Database: EDM 5000.1 Single User Db
 Company: EOG Resources - Midland
 Project: Lea County, NM (NAD 27 NME)
 Site: Osprey 10
 Well: #602H
 Wellbore: OH
 Design: Plan #0.1

Local Co-ordinate Reference: Well #602H
 TVD Reference: KB = 25 @ 3359.0usft
 MD Reference: KB = 25 @ 3359.0usft
 North Reference: Grid
 Survey Calculation Method: Minimum Curvature

Planned Survey

Measured Depth (usft)	Inclination (°)	Azimuth (°)	Vertical Depth (usft)	+N/-S (usft)	+E/-W (usft)	Vertical Section (usft)	Dogleg Rate (°/100usft)	Build Rate (°/100usft)	Turn Rate (°/100usft)
0.0	0.00	0.00	0.0	0.0	0.0	0.0	0.00	0.00	0.00
100.0	0.00	0.00	100.0	0.0	0.0	0.0	0.00	0.00	0.00
200.0	0.00	0.00	200.0	0.0	0.0	0.0	0.00	0.00	0.00
300.0	0.00	0.00	300.0	0.0	0.0	0.0	0.00	0.00	0.00
400.0	0.00	0.00	400.0	0.0	0.0	0.0	0.00	0.00	0.00
500.0	0.00	0.00	500.0	0.0	0.0	0.0	0.00	0.00	0.00
600.0	0.00	0.00	600.0	0.0	0.0	0.0	0.00	0.00	0.00
700.0	0.00	0.00	700.0	0.0	0.0	0.0	0.00	0.00	0.00
800.0	0.00	0.00	800.0	0.0	0.0	0.0	0.00	0.00	0.00
900.0	0.00	0.00	900.0	0.0	0.0	0.0	0.00	0.00	0.00
1,000.0	0.00	0.00	1,000.0	0.0	0.0	0.0	0.00	0.00	0.00
1,100.0	0.00	0.00	1,100.0	0.0	0.0	0.0	0.00	0.00	0.00
1,200.0	0.00	0.00	1,200.0	0.0	0.0	0.0	0.00	0.00	0.00
1,300.0	0.00	0.00	1,300.0	0.0	0.0	0.0	0.00	0.00	0.00
1,400.0	0.00	0.00	1,400.0	0.0	0.0	0.0	0.00	0.00	0.00
1,500.0	0.00	0.00	1,500.0	0.0	0.0	0.0	0.00	0.00	0.00
1,600.0	0.00	0.00	1,600.0	0.0	0.0	0.0	0.00	0.00	0.00
1,700.0	0.00	0.00	1,700.0	0.0	0.0	0.0	0.00	0.00	0.00
1,800.0	0.00	0.00	1,800.0	0.0	0.0	0.0	0.00	0.00	0.00
1,900.0	0.00	0.00	1,900.0	0.0	0.0	0.0	0.00	0.00	0.00
2,000.0	0.00	0.00	2,000.0	0.0	0.0	0.0	0.00	0.00	0.00
2,100.0	0.00	0.00	2,100.0	0.0	0.0	0.0	0.00	0.00	0.00
2,200.0	0.00	0.00	2,200.0	0.0	0.0	0.0	0.00	0.00	0.00
2,300.0	0.00	0.00	2,300.0	0.0	0.0	0.0	0.00	0.00	0.00
2,400.0	0.00	0.00	2,400.0	0.0	0.0	0.0	0.00	0.00	0.00
2,500.0	0.00	0.00	2,500.0	0.0	0.0	0.0	0.00	0.00	0.00
2,600.0	0.00	0.00	2,600.0	0.0	0.0	0.0	0.00	0.00	0.00
2,700.0	0.00	0.00	2,700.0	0.0	0.0	0.0	0.00	0.00	0.00
2,800.0	0.00	0.00	2,800.0	0.0	0.0	0.0	0.00	0.00	0.00
2,900.0	0.00	0.00	2,900.0	0.0	0.0	0.0	0.00	0.00	0.00
3,000.0	0.00	0.00	3,000.0	0.0	0.0	0.0	0.00	0.00	0.00
3,100.0	0.00	0.00	3,100.0	0.0	0.0	0.0	0.00	0.00	0.00
3,200.0	0.00	0.00	3,200.0	0.0	0.0	0.0	0.00	0.00	0.00
3,300.0	0.00	0.00	3,300.0	0.0	0.0	0.0	0.00	0.00	0.00
3,400.0	0.00	0.00	3,400.0	0.0	0.0	0.0	0.00	0.00	0.00
3,500.0	0.00	0.00	3,500.0	0.0	0.0	0.0	0.00	0.00	0.00
3,600.0	0.00	0.00	3,600.0	0.0	0.0	0.0	0.00	0.00	0.00
3,700.0	0.00	0.00	3,700.0	0.0	0.0	0.0	0.00	0.00	0.00
3,800.0	0.00	0.00	3,800.0	0.0	0.0	0.0	0.00	0.00	0.00
3,900.0	0.00	0.00	3,900.0	0.0	0.0	0.0	0.00	0.00	0.00
4,000.0	0.00	0.00	4,000.0	0.0	0.0	0.0	0.00	0.00	0.00
4,100.0	0.00	0.00	4,100.0	0.0	0.0	0.0	0.00	0.00	0.00
4,200.0	0.00	0.00	4,200.0	0.0	0.0	0.0	0.00	0.00	0.00
4,300.0	0.00	0.00	4,300.0	0.0	0.0	0.0	0.00	0.00	0.00
4,400.0	0.00	0.00	4,400.0	0.0	0.0	0.0	0.00	0.00	0.00
4,500.0	0.00	0.00	4,500.0	0.0	0.0	0.0	0.00	0.00	0.00
4,600.0	1.00	162.49	4,600.0	-0.8	0.3	-0.8	1.00	1.00	0.00
4,700.0	2.00	162.49	4,700.0	-3.3	1.1	-3.3	1.00	1.00	0.00
4,800.0	3.00	162.49	4,799.9	-7.5	2.4	-7.5	1.00	1.00	0.00
4,904.3	4.04	162.49	4,904.0	-13.6	4.3	-13.5	1.00	1.00	0.00
5,000.0	4.04	162.49	4,999.4	-20.0	6.3	-19.9	0.00	0.00	0.00
5,100.0	4.04	162.49	5,099.2	-26.8	8.4	-26.6	0.00	0.00	0.00
5,200.0	4.04	162.49	5,198.9	-33.5	10.6	-33.3	0.00	0.00	0.00
5,300.0	4.04	162.49	5,298.7	-40.2	12.7	-40.0	0.00	0.00	0.00



EOG Resources, Inc.

Planning Report

Database: EDM 5000.1 Single User Db
 Company: EOG Resources - Midland
 Project: Lea County, NM (NAD 27 NME)
 Site: Osprey 10
 Well: #602H
 Wellbore: OH
 Design: Plan #0.1

Local Co-ordinate Reference:
 TVD Reference:
 MD Reference:
 North Reference:
 Survey Calculation Method:

Well #602H
 KB = 25 @ 3359.0usft
 KB = 25 @ 3359.0usft
 Grid
 Minimum Curvature

Planned Survey										
Measured Depth (usft)	Inclination (°)	Azimuth (°)	Vertical Depth (usft)	+N/-S (usft)	+E/-W (usft)	Vertical Section (usft)	Dogleg Rate (°/100usft)	Build Rate (°/100usft)	Turn Rate (°/100usft)	
5,400.0	4.04	162.49	5,398.4	-46.9	14.8	-46.7	0.00	0.00	0.00	
5,500.0	4.04	162.49	5,498.2	-53.7	16.9	-53.4	0.00	0.00	0.00	
5,600.0	4.04	162.49	5,597.9	-60.4	19.1	-60.1	0.00	0.00	0.00	
5,700.0	4.04	162.49	5,697.7	-67.1	21.2	-66.8	0.00	0.00	0.00	
5,800.0	4.04	162.49	5,797.4	-73.8	23.3	-73.5	0.00	0.00	0.00	
5,900.0	4.04	162.49	5,897.2	-80.5	25.4	-80.2	0.00	0.00	0.00	
6,000.0	4.04	162.49	5,996.9	-87.3	27.5	-86.9	0.00	0.00	0.00	
6,100.0	4.04	162.49	6,096.7	-94.0	29.7	-93.6	0.00	0.00	0.00	
6,200.0	4.04	162.49	6,196.4	-100.7	31.8	-100.2	0.00	0.00	0.00	
6,300.0	4.04	162.49	6,296.2	-107.4	33.9	-106.9	0.00	0.00	0.00	
6,400.0	4.04	162.49	6,395.9	-114.2	36.0	-113.6	0.00	0.00	0.00	
6,500.0	4.04	162.49	6,495.7	-120.9	38.2	-120.3	0.00	0.00	0.00	
6,600.0	4.04	162.49	6,595.4	-127.6	40.3	-127.0	0.00	0.00	0.00	
6,700.0	4.04	162.49	6,695.2	-134.3	42.4	-133.7	0.00	0.00	0.00	
6,800.0	4.04	162.49	6,794.9	-141.1	44.5	-140.4	0.00	0.00	0.00	
6,900.0	4.04	162.49	6,894.7	-147.8	46.6	-147.1	0.00	0.00	0.00	
7,000.0	4.04	162.49	6,994.4	-154.5	48.8	-153.8	0.00	0.00	0.00	
7,100.0	4.04	162.49	7,094.2	-161.2	50.9	-160.5	0.00	0.00	0.00	
7,200.0	4.04	162.49	7,194.0	-168.0	53.0	-167.2	0.00	0.00	0.00	
7,300.0	4.04	162.49	7,293.7	-174.7	55.1	-173.9	0.00	0.00	0.00	
7,400.0	4.04	162.49	7,393.5	-181.4	57.3	-180.6	0.00	0.00	0.00	
7,500.0	4.04	162.49	7,493.2	-188.1	59.4	-187.2	0.00	0.00	0.00	
7,600.0	4.04	162.49	7,593.0	-194.9	61.5	-193.9	0.00	0.00	0.00	
7,700.0	4.04	162.49	7,692.7	-201.6	63.6	-200.6	0.00	0.00	0.00	
7,800.0	4.04	162.49	7,792.5	-208.3	65.7	-207.3	0.00	0.00	0.00	
7,900.0	4.04	162.49	7,892.2	-215.0	67.9	-214.0	0.00	0.00	0.00	
8,000.0	4.04	162.49	7,992.0	-221.8	70.0	-220.7	0.00	0.00	0.00	
8,100.0	4.04	162.49	8,091.7	-228.5	72.1	-227.4	0.00	0.00	0.00	
8,200.0	4.04	162.49	8,191.5	-235.2	74.2	-234.1	0.00	0.00	0.00	
8,300.0	4.04	162.49	8,291.2	-241.9	76.3	-240.8	0.00	0.00	0.00	
8,400.0	4.04	162.49	8,391.0	-248.7	78.5	-247.5	0.00	0.00	0.00	
8,500.0	4.04	162.49	8,490.7	-255.4	80.6	-254.2	0.00	0.00	0.00	
8,600.0	4.04	162.49	8,590.5	-262.1	82.7	-260.9	0.00	0.00	0.00	
8,700.0	4.04	162.49	8,690.2	-268.8	84.8	-267.6	0.00	0.00	0.00	
8,800.0	4.04	162.49	8,790.0	-275.6	87.0	-274.2	0.00	0.00	0.00	
8,900.0	4.04	162.49	8,889.7	-282.3	89.1	-280.9	0.00	0.00	0.00	
9,000.0	4.04	162.49	8,989.5	-289.0	91.2	-287.6	0.00	0.00	0.00	
9,100.0	4.04	162.49	9,089.2	-295.7	93.3	-294.3	0.00	0.00	0.00	
9,200.0	4.04	162.49	9,189.0	-302.4	95.4	-301.0	0.00	0.00	0.00	
9,300.0	4.04	162.49	9,288.7	-309.2	97.6	-307.7	0.00	0.00	0.00	
9,400.0	4.04	162.49	9,388.5	-315.9	99.7	-314.4	0.00	0.00	0.00	
9,500.0	4.04	162.49	9,488.2	-322.6	101.8	-321.1	0.00	0.00	0.00	
9,600.0	4.04	162.49	9,588.0	-329.3	103.9	-327.8	0.00	0.00	0.00	
9,700.0	4.04	162.49	9,687.7	-336.1	106.1	-334.5	0.00	0.00	0.00	
9,800.0	4.04	162.49	9,787.5	-342.8	108.2	-341.2	0.00	0.00	0.00	
9,900.0	4.04	162.49	9,887.2	-349.5	110.3	-347.9	0.00	0.00	0.00	
10,000.0	4.04	162.49	9,987.0	-356.2	112.4	-354.6	0.00	0.00	0.00	
10,100.0	4.04	162.49	10,086.7	-363.0	114.5	-361.2	0.00	0.00	0.00	
10,200.0	4.04	162.49	10,186.5	-369.7	116.7	-367.9	0.00	0.00	0.00	
10,300.0	4.04	162.49	10,286.2	-376.4	118.8	-374.6	0.00	0.00	0.00	
10,400.0	4.04	162.49	10,386.0	-383.1	120.9	-381.3	0.00	0.00	0.00	
10,500.0	4.04	162.49	10,485.7	-389.9	123.0	-388.0	0.00	0.00	0.00	
10,600.0	4.04	162.49	10,585.5	-396.6	125.2	-394.7	0.00	0.00	0.00	
10,700.0	4.04	162.49	10,685.2	-403.3	127.3	-401.4	0.00	0.00	0.00	



EOG Resources, Inc.

Planning Report

Database: EDM 5000.1 Single User Db
 Company: EOG Resources - Midland
 Project: Lea County, NM (NAD 27 NME)
 Site: Osprey 10
 Well: #602H
 Wellbore: OH
 Design: Plan #0.1

Local Co-ordinate Reference:
 TVD Reference:
 MD Reference:
 North Reference:
 Survey Calculation Method:

Well #602H
 KB = 25 @ 3359.0usft
 KB = 25 @ 3359.0usft
 Grid
 Minimum Curvature

Planned Survey

Measured Depth (usft)	Inclination (°)	Azimuth (°)	Vertical Depth (usft)	+N/-S (usft)	+E/-W (usft)	Vertical Section (usft)	Dogleg Rate (°/100usft)	Build Rate (°/100usft)	Turn Rate (°/100usft)
10,800.0	4.04	162.49	10,785.0	-410.0	129.4	-408.1	0.00	0.00	0.00
10,900.0	4.04	162.49	10,884.7	-416.8	131.5	-414.8	0.00	0.00	0.00
11,000.0	4.04	162.49	10,984.5	-423.5	133.6	-421.5	0.00	0.00	0.00
11,100.0	4.04	162.49	11,084.2	-430.2	135.8	-428.2	0.00	0.00	0.00
11,200.0	4.04	162.49	11,184.0	-436.9	137.9	-434.9	0.00	0.00	0.00
11,300.0	4.04	162.49	11,283.7	-443.7	140.0	-441.6	0.00	0.00	0.00
11,400.0	4.04	162.49	11,383.5	-450.4	142.1	-448.2	0.00	0.00	0.00
11,500.0	4.04	162.49	11,483.2	-457.1	144.3	-454.9	0.00	0.00	0.00
11,600.0	4.04	162.49	11,583.0	-463.8	146.4	-461.6	0.00	0.00	0.00
11,700.0	4.04	162.49	11,682.8	-470.6	148.5	-468.3	0.00	0.00	0.00
11,732.8	4.04	162.49	11,715.5	-472.8	149.2	-470.5	0.00	0.00	0.00
11,750.0	2.16	146.17	11,732.6	-473.6	149.6	-471.4	12.00	-10.96	-95.08
11,775.0	1.69	44.53	11,757.6	-473.7	150.1	-471.5	12.00	-1.90	-406.56
11,800.0	4.36	15.44	11,782.6	-472.6	150.6	-470.3	12.00	10.69	-116.35
11,825.0	7.29	8.97	11,807.5	-470.1	151.1	-467.8	12.00	11.73	-25.91
11,850.0	10.26	6.21	11,832.2	-466.3	151.6	-464.0	12.00	11.88	-11.04
11,875.0	13.25	4.68	11,856.6	-461.2	152.1	-458.9	12.00	11.94	-6.11
11,900.0	16.24	3.71	11,880.8	-454.9	152.5	-452.6	12.00	11.96	-3.89
11,925.0	19.23	3.03	11,904.6	-447.3	153.0	-445.0	12.00	11.97	-2.71
11,950.0	22.23	2.53	11,928.0	-438.4	153.4	-436.1	12.00	11.98	-2.00
11,975.0	25.22	2.14	11,950.9	-428.4	153.8	-426.1	12.00	11.98	-1.55
12,000.0	28.22	1.83	11,973.2	-417.2	154.2	-414.8	12.00	11.99	-1.24
12,025.0	31.22	1.58	11,994.9	-404.8	154.5	-402.5	12.00	11.99	-1.02
12,050.0	34.21	1.36	12,016.0	-391.3	154.9	-388.9	12.00	11.99	-0.86
12,075.0	37.21	1.18	12,036.3	-376.7	155.2	-374.4	12.00	11.99	-0.73
12,100.0	40.21	1.02	12,055.8	-361.0	155.5	-358.7	12.00	11.99	-0.64
12,125.0	43.21	0.88	12,074.4	-344.4	155.8	-342.1	12.00	11.99	-0.56
12,150.0	46.21	0.75	12,092.2	-326.8	156.0	-324.5	12.00	11.99	-0.50
12,175.0	49.21	0.64	12,109.0	-308.3	156.3	-306.0	12.00	12.00	-0.46
12,200.0	52.20	0.53	12,124.8	-289.0	156.5	-286.7	12.00	12.00	-0.42
12,225.0	55.20	0.44	12,139.6	-268.9	156.6	-266.5	12.00	12.00	-0.38
12,250.0	58.20	0.35	12,153.4	-248.0	156.8	-245.6	12.00	12.00	-0.36
12,275.0	61.20	0.26	12,166.0	-226.4	156.9	-224.1	12.00	12.00	-0.34
12,300.0	64.20	0.18	12,177.4	-204.2	157.0	-201.8	12.00	12.00	-0.32
12,324.3	67.11	0.11	12,187.4	-182.0	157.0	-179.7	12.00	12.00	-0.30
FTP (Osprey 10 #602H)									
12,325.0	67.20	0.11	12,187.7	-181.4	157.0	-179.1	12.00	12.00	-0.29
12,350.0	70.20	0.04	12,196.8	-158.1	157.1	-155.8	12.00	12.00	-0.29
12,375.0	73.20	359.97	12,204.7	-134.4	157.1	-132.0	12.00	12.00	-0.28
12,400.0	76.20	359.90	12,211.3	-110.2	157.0	-107.9	12.00	12.00	-0.27
12,425.0	79.20	359.84	12,216.6	-85.8	157.0	-83.5	12.00	12.00	-0.26
12,450.0	82.20	359.77	12,220.6	-61.2	156.9	-58.8	12.00	12.00	-0.26
12,475.0	85.20	359.71	12,223.4	-36.3	156.8	-34.0	12.00	12.00	-0.25
12,500.0	88.20	359.65	12,224.8	-11.4	156.6	-9.1	12.00	12.00	-0.25
12,523.4	91.00	359.59	12,225.0	12.0	156.5	14.3	12.00	12.00	-0.25
12,600.0	91.00	359.59	12,223.6	88.6	155.9	90.9	0.00	0.00	0.00
12,700.0	91.00	359.59	12,221.9	188.6	155.2	190.9	0.00	0.00	0.00
12,800.0	91.00	359.59	12,220.1	288.6	154.5	290.8	0.00	0.00	0.00
12,900.0	91.00	359.59	12,218.4	388.6	153.8	390.8	0.00	0.00	0.00
13,000.0	91.00	359.59	12,216.6	488.6	153.0	490.7	0.00	0.00	0.00
13,100.0	91.00	359.59	12,214.9	588.5	152.3	590.7	0.00	0.00	0.00
13,200.0	91.00	359.59	12,213.2	688.5	151.6	690.7	0.00	0.00	0.00
13,300.0	91.00	359.59	12,211.4	788.5	150.9	790.6	0.00	0.00	0.00



EOG Resources, Inc.

Planning Report

Database: EDM 5000.1 Single User Db
 Company: EOG Resources - Midland
 Project: Lea County, NM (NAD 27 NME)
 Site: Osprey 10
 Well: #602H
 Wellbore: OH
 Design: Plan #0.1

Local Co-ordinate Reference:
 TVD Reference:
 MD Reference:
 North Reference:
 Survey Calculation Method:

Well #602H
 KB = 25 @ 3359.0usft
 KB = 25 @ 3359.0usft
 Grid
 Minimum Curvature

Planned Survey

Measured Depth (usft)	Inclination (°)	Azimuth (°)	Vertical Depth (usft)	+N/-S (usft)	+E/-W (usft)	Vertical Section (usft)	Dogleg Rate (°/100usft)	Build Rate (°/100usft)	Turn Rate (°/100usft)
13,400.0	91.00	359.59	12,209.7	888.5	150.2	890.6	0.00	0.00	0.00
13,500.0	91.00	359.59	12,207.9	988.5	149.4	990.6	0.00	0.00	0.00
13,600.0	91.00	359.59	12,206.2	1,088.4	148.7	1,090.5	0.00	0.00	0.00
13,700.0	91.00	359.59	12,204.4	1,188.4	148.0	1,190.5	0.00	0.00	0.00
13,800.0	91.00	359.59	12,202.7	1,288.4	147.3	1,290.4	0.00	0.00	0.00
13,900.0	91.00	359.59	12,200.9	1,388.4	146.6	1,390.4	0.00	0.00	0.00
14,000.0	91.00	359.59	12,199.2	1,488.4	145.8	1,490.4	0.00	0.00	0.00
14,100.0	91.00	359.59	12,197.5	1,588.4	145.1	1,590.3	0.00	0.00	0.00
14,200.0	91.00	359.59	12,195.7	1,688.3	144.4	1,690.3	0.00	0.00	0.00
14,300.0	91.00	359.59	12,194.0	1,788.3	143.7	1,790.2	0.00	0.00	0.00
14,400.0	91.00	359.59	12,192.2	1,888.3	143.0	1,890.2	0.00	0.00	0.00
14,500.0	91.00	359.59	12,190.5	1,988.3	142.2	1,990.2	0.00	0.00	0.00
14,600.0	91.00	359.59	12,188.7	2,088.3	141.5	2,090.1	0.00	0.00	0.00
14,700.0	91.00	359.59	12,187.0	2,188.3	140.8	2,190.1	0.00	0.00	0.00
14,800.0	91.00	359.59	12,185.2	2,288.2	140.1	2,290.0	0.00	0.00	0.00
14,900.0	91.00	359.59	12,183.5	2,388.2	139.4	2,390.0	0.00	0.00	0.00
15,000.0	91.00	359.59	12,181.7	2,488.2	138.6	2,490.0	0.00	0.00	0.00
15,100.0	91.00	359.59	12,180.0	2,588.2	137.9	2,589.9	0.00	0.00	0.00
15,200.0	91.00	359.59	12,178.3	2,688.2	137.2	2,689.9	0.00	0.00	0.00
15,300.0	91.00	359.59	12,176.5	2,788.1	136.5	2,789.8	0.00	0.00	0.00
15,400.0	91.00	359.59	12,174.8	2,888.1	135.7	2,889.8	0.00	0.00	0.00
15,500.0	91.00	359.59	12,173.0	2,988.1	135.0	2,989.8	0.00	0.00	0.00
15,600.0	91.00	359.59	12,171.3	3,088.1	134.3	3,089.7	0.00	0.00	0.00
15,700.0	91.00	359.59	12,169.5	3,188.1	133.6	3,189.7	0.00	0.00	0.00
15,800.0	91.00	359.59	12,167.8	3,288.1	132.9	3,289.7	0.00	0.00	0.00
15,900.0	91.00	359.59	12,166.0	3,388.0	132.1	3,389.6	0.00	0.00	0.00
16,000.0	91.00	359.59	12,164.3	3,488.0	131.4	3,489.6	0.00	0.00	0.00
16,100.0	91.00	359.59	12,162.5	3,588.0	130.7	3,589.5	0.00	0.00	0.00
16,200.0	91.00	359.59	12,160.8	3,688.0	130.0	3,689.5	0.00	0.00	0.00
16,300.0	91.00	359.59	12,159.1	3,788.0	129.3	3,789.5	0.00	0.00	0.00
16,400.0	91.00	359.59	12,157.3	3,887.9	128.5	3,889.4	0.00	0.00	0.00
16,500.0	91.00	359.59	12,155.6	3,987.9	127.8	3,989.4	0.00	0.00	0.00
16,600.0	91.00	359.59	12,153.8	4,087.9	127.1	4,089.3	0.00	0.00	0.00
16,700.0	91.00	359.59	12,152.1	4,187.9	126.4	4,189.3	0.00	0.00	0.00
16,800.0	91.00	359.59	12,150.3	4,287.9	125.7	4,289.3	0.00	0.00	0.00
16,900.0	91.00	359.59	12,148.6	4,387.9	124.9	4,389.2	0.00	0.00	0.00
17,000.0	91.00	359.59	12,146.8	4,487.8	124.2	4,489.2	0.00	0.00	0.00
17,100.0	91.00	359.59	12,145.1	4,587.8	123.5	4,589.1	0.00	0.00	0.00
17,200.0	91.00	359.59	12,143.3	4,687.8	122.8	4,689.1	0.00	0.00	0.00
17,300.0	91.00	359.59	12,141.6	4,787.8	122.1	4,789.1	0.00	0.00	0.00
17,400.0	91.00	359.59	12,139.9	4,887.8	121.3	4,889.0	0.00	0.00	0.00
17,500.0	91.00	359.59	12,138.1	4,987.8	120.6	4,989.0	0.00	0.00	0.00
17,600.0	91.00	359.59	12,136.4	5,087.7	119.9	5,088.9	0.00	0.00	0.00
17,700.0	91.00	359.59	12,134.6	5,187.7	119.2	5,188.9	0.00	0.00	0.00
17,800.0	91.00	359.59	12,132.9	5,287.7	118.5	5,288.9	0.00	0.00	0.00
17,900.0	91.00	359.59	12,131.1	5,387.7	117.7	5,388.8	0.00	0.00	0.00
18,000.0	91.00	359.59	12,129.4	5,487.7	117.0	5,488.8	0.00	0.00	0.00
18,100.0	91.00	359.59	12,127.6	5,587.6	116.3	5,588.8	0.00	0.00	0.00
18,200.0	91.00	359.59	12,125.9	5,687.6	115.6	5,688.7	0.00	0.00	0.00
18,300.0	91.00	359.59	12,124.2	5,787.6	114.8	5,788.7	0.00	0.00	0.00
18,400.0	91.00	359.59	12,122.4	5,887.6	114.1	5,888.6	0.00	0.00	0.00
18,500.0	91.00	359.59	12,120.7	5,987.6	113.4	5,988.6	0.00	0.00	0.00
18,600.0	91.00	359.59	12,118.9	6,087.6	112.7	6,088.6	0.00	0.00	0.00
18,700.0	91.00	359.59	12,117.2	6,187.5	112.0	6,188.5	0.00	0.00	0.00



EOG Resources, Inc.

Planning Report

Database: EDM 5000.1 Single User Db
 Company: EOG Resources - Midland
 Project: Lea County, NM (NAD 27 NME)
 Site: Osprey 10
 Well: #602H
 Wellbore: OH
 Design: Plan #0.1

Local Co-ordinate Reference: Well #602H
 TVD Reference: KB = 25 @ 3359.0usft
 MD Reference: KB = 25 @ 3359.0usft
 North Reference: Grid
 Survey Calculation Method: Minimum Curvature

Planned Survey

Measured Depth (usft)	Inclination (°)	Azimuth (°)	Vertical Depth (usft)	+N/-S (usft)	+E/-W (usft)	Vertical Section (usft)	Dogleg Rate (°/100usft)	Build Rate (°/100usft)	Turn Rate (°/100usft)
18,800.0	91.00	359.59	12,115.4	6,287.5	111.2	6,288.5	0.00	0.00	0.00
18,900.0	91.00	359.59	12,113.7	6,387.5	110.5	6,388.4	0.00	0.00	0.00
19,000.0	91.00	359.59	12,111.9	6,487.5	109.8	6,488.4	0.00	0.00	0.00
19,100.0	91.00	359.59	12,110.2	6,587.5	109.1	6,588.4	0.00	0.00	0.00
19,200.0	91.00	359.59	12,108.4	6,687.5	108.4	6,688.3	0.00	0.00	0.00
19,300.0	91.00	359.59	12,106.7	6,787.4	107.6	6,788.3	0.00	0.00	0.00
19,400.0	91.00	359.59	12,105.0	6,887.4	106.9	6,888.2	0.00	0.00	0.00
19,500.0	91.00	359.59	12,103.2	6,987.4	106.2	6,988.2	0.00	0.00	0.00
19,600.0	91.00	359.59	12,101.5	7,087.4	105.5	7,088.2	0.00	0.00	0.00
19,666.6	91.00	359.59	12,100.3	7,154.0	105.0	7,154.8	0.00	0.00	0.00

PBHL (Osprey 10 #602H)

Design Targets

Target Name - hit/miss target - Shape	Dip Angle (°)	Dip Dir. (°)	TVD (usft)	+N/-S (usft)	+E/-W (usft)	Northing (usft)	Easting (usft)	Latitude	Longitude
PBHL (Osprey 10 #602H) - plan hits target center - Point	0.00	0.00	12,100.3	7,154.0	105.0	422,574.00	769,727.00	32° 9' 31.575 N	103° 27' 42.267 W
FTP (Osprey 10 #602H) - plan misses target center by 41.2usft at 12324.3usft MD (12187.4 TVD, -182.0 N, 157.0 E) - Point	0.00	0.00	12,225.0	-199.0	158.0	415,221.00	769,780.00	32° 8' 18.810 N	103° 27' 42.343 W