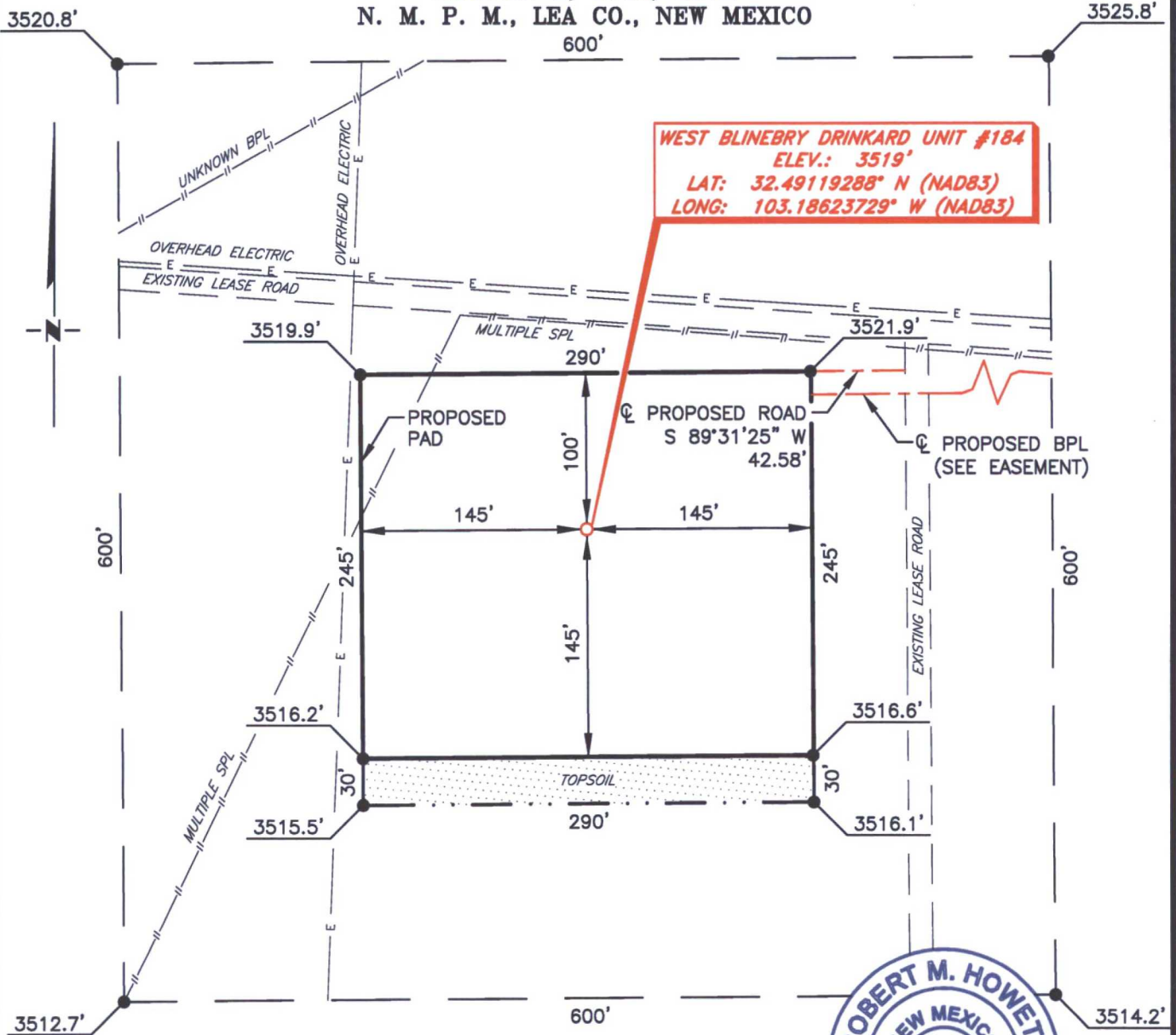


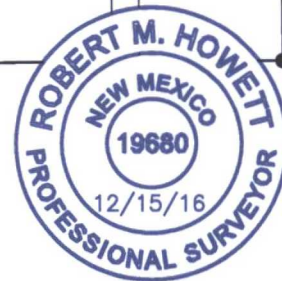
APACHE CORPORATION
WEST BLINEBRY DRINKARD UNIT #184
(1820' FSL & 2300' FWL)
SECTION 8, T21S, R37E
N. M. P. M., LEA CO., NEW MEXICO



SCALE: 1" = 100'
0 50 100

BEARINGS ARE
NAD 83 GRID - NM EAST
DISTANCES ARE
GROUND.

Firm No.: TX 10193838 NM 4655451



Copyright 2016 - All Rights Reserved

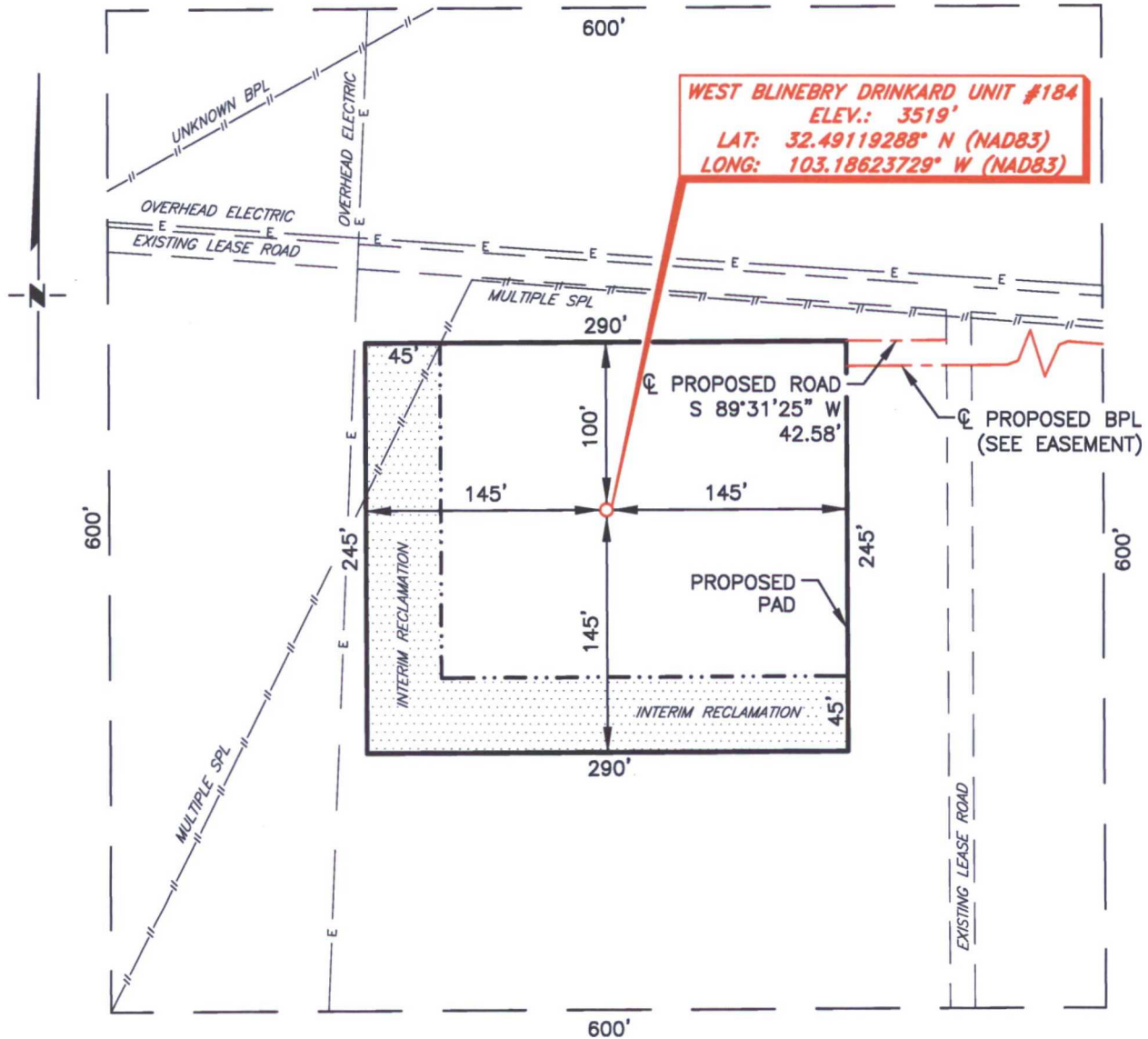
NO.	REVISION	DATE
JOB NO.:	LS1611393	
DWG. NO.:	1611393PAD	

RRC

308 W. BROADWAY ST., HOBBS, NM 88240 (575) 964-8200

SCALE: 1" = 100'
DATE: 12-7-16
SURVEYED BY: JM/HD
DRAWN BY: LPS
APPROVED BY: RMH
SHEET: 1 OF 1

**APACHE CORPORATION
INTERIM RECLAMATION
WEST BLINEBRY DRINKARD UNIT #184
(1820' FSL & 2300' FWL)
SECTION 8, T21S, R37E
N. M. P. M., LEA CO., NEW MEXICO**



SCALE: 1" = 100'
0 50 100

BEARINGS ARE
NAD 83 GRID - NM EAST
DISTANCES ARE
GROUND.

Firm No.: TX 10193838 NM 4655451

Copyright 2016 - All Rights Reserved

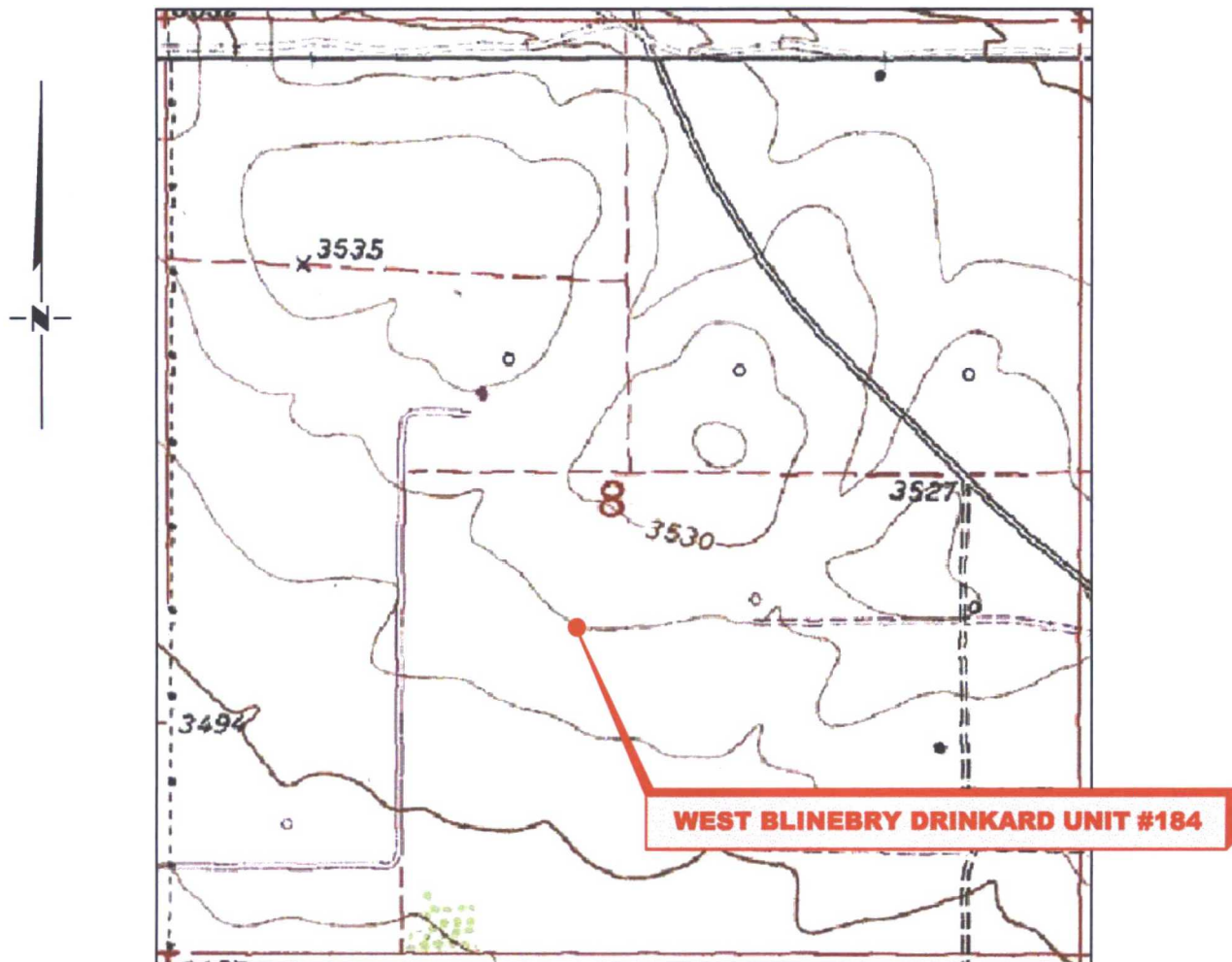
NO.	REVISION	DATE
JOB NO.:	LS1611393	
DWG. NO.:	1611393REC	

RRC

308 W. BROADWAY ST., HOBBS, NM 88240 (575) 964-8200

SCALE: 1" = 100'
DATE: 12-7-16
SURVEYED BY: JM/HD
DRAWN BY: LPS
APPROVED BY: RMH
SHEET: 1 OF 1

LOCATION VERIFICATION MAP



*SECTION 8 TWP. 21 SOUTH, RGE. 37 EAST,
N. M. P. M., LEA CO., NEW MEXICO*

OPERATOR: Apache Corporation
LEASE: West Blinebry Drinkard Unit
WELL NO.: 184
ELEVATION: 3519'

LOCATION: 1820' FSL & 2300' FWL
CONTOUR INTERVAL: 10'
USGS TOPO. SOURCE MAP:
Eunice, NM (P. E. 1985)

Firm No.: TX 10193838 NM 4655451

Copyright 2016 - All Rights Reserved

NO.	REVISION	DATE
JOB NO.:	LS1611393	
DWG. NO.:	1611393LVM	

RRC

308 W. BROADWAY ST., HOBBS, NM 88240 (575) 964-8200

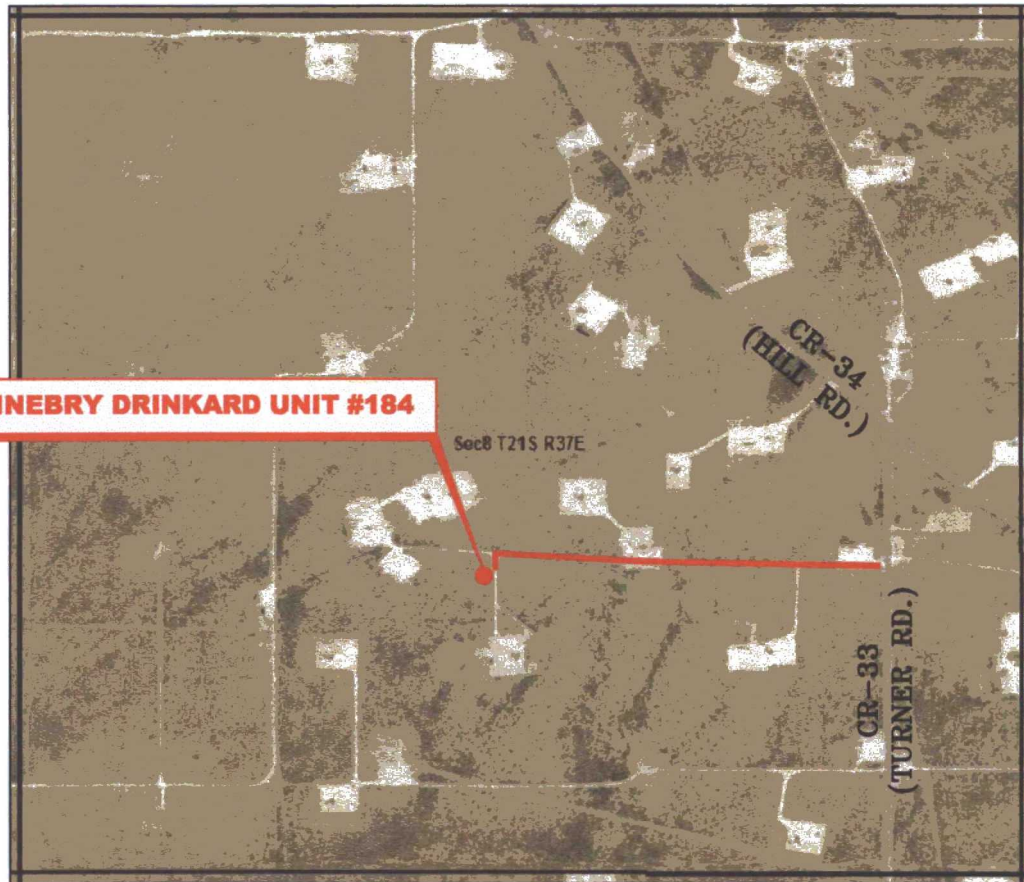
SCALE: 1" = 1000'
DATE: 12-06-16
SURVEYED BY: JM/HD
DRAWN BY: LPS
APPROVED BY: RMH
SHEET: 1 OF 1

VICINITY MAP

NOT TO SCALE



WEST BLINEBRY DRINKARD UNIT #184



*From the intersection of CR-34 (Hill Rd.) and CR-33 (Turner Rd.)
Go South on CR-33 approx. 0.1 miles to a lease road on the right;
Turn right and go West approx. 0.4 miles to lease road on the left;
Turn left and go South approx. 125 feet to location on the right.*

**SECTION 8, TWP. 21 SOUTH, RGE. 37 EAST,
N. M. P. M., LEA CO., NEW MEXICO**

OPERATOR: Apache Corporation
LEASE: West Blinebry Drinkard Unit
WELL NO.: 184

LOCATION: 1820' FSL & 2300' FWL
ELEVATION: 3519'

Firm No.: TX 10193838 NM 4655451

Copyright 2016 - All Rights Reserved

NO.	REVISION	DATE
JOB NO.: LS1611393		
DWG. NO.: 1611393VM		

RRC



308 W. BROADWAY ST., HOBBS, NM 88240 (575) 964-8200

SCALE: N. T. S.
DATE: 12-07-16
SURVEYED BY: JM/HD
DRAWN BY: LPS
APPROVED BY: RMH
SHEET: 1 OF 1



APD ID: 10400011701

Submission Date: 02/23/2017

Operator Name: APACHE CORPORATION

Well Name: WEST BLINEBRY DRINKARD UNIT

Well Number: 184

Well Type: INJECTION - ENHANCED RECOVERY

Well Work Type: Drill

Section 1 - Geologic Formations

ID: Surface formation

Name: RUSTLER

Lithology(ies):

Elevation: 3419

True Vertical Depth: 1295

Measured Depth: 1295

Mineral Resource(s):

NONE

Is this a producing formation? N

ID: Formation 1

Name: SALADO

Lithology(ies):

Elevation: 1914

True Vertical Depth: 1505

Measured Depth: 1505

Mineral Resource(s):

POTASH

Is this a producing formation? N

ID: Formation 2

Name: TANSILL

Lithology(ies):

Elevation: 883

True Vertical Depth: 2536

Measured Depth: 2536

Mineral Resource(s):

NONE

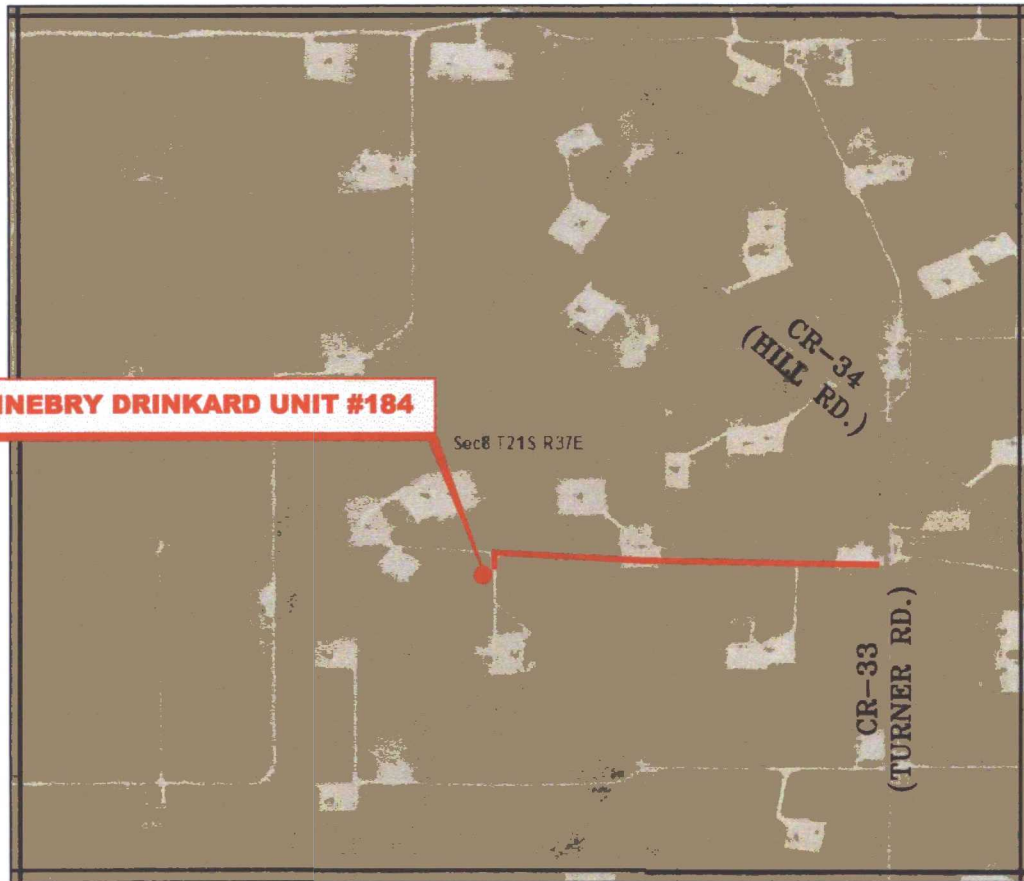
Is this a producing formation? N

VICINITY MAP

NOT TO SCALE



WEST BLINEBRY DRINKARD UNIT #184



*From the intersection of CR-34 (Hill Rd.) and CR-33 (Turner Rd.)
Go South on CR-33 approx. 0.1 miles to a lease road on the right;
Turn right and go West approx. 0.4 miles to lease road on the left;
Turn left and go South approx. 125 feet to location on the right.*

**SECTION 8, TWP. 21 SOUTH, RGE. 37 EAST,
N. M. P. M., LEA CO., NEW MEXICO**

OPERATOR: Apache Corporation

LOCATION: 1820' FSL & 2300' FWL

LEASE: West Blinebry Drinkard Unit

ELEVATION: 3519'

WELL NO.: 184

Firm No.: TX 10193838 NM 4655451

Copyright 2016 - All Rights Reserved

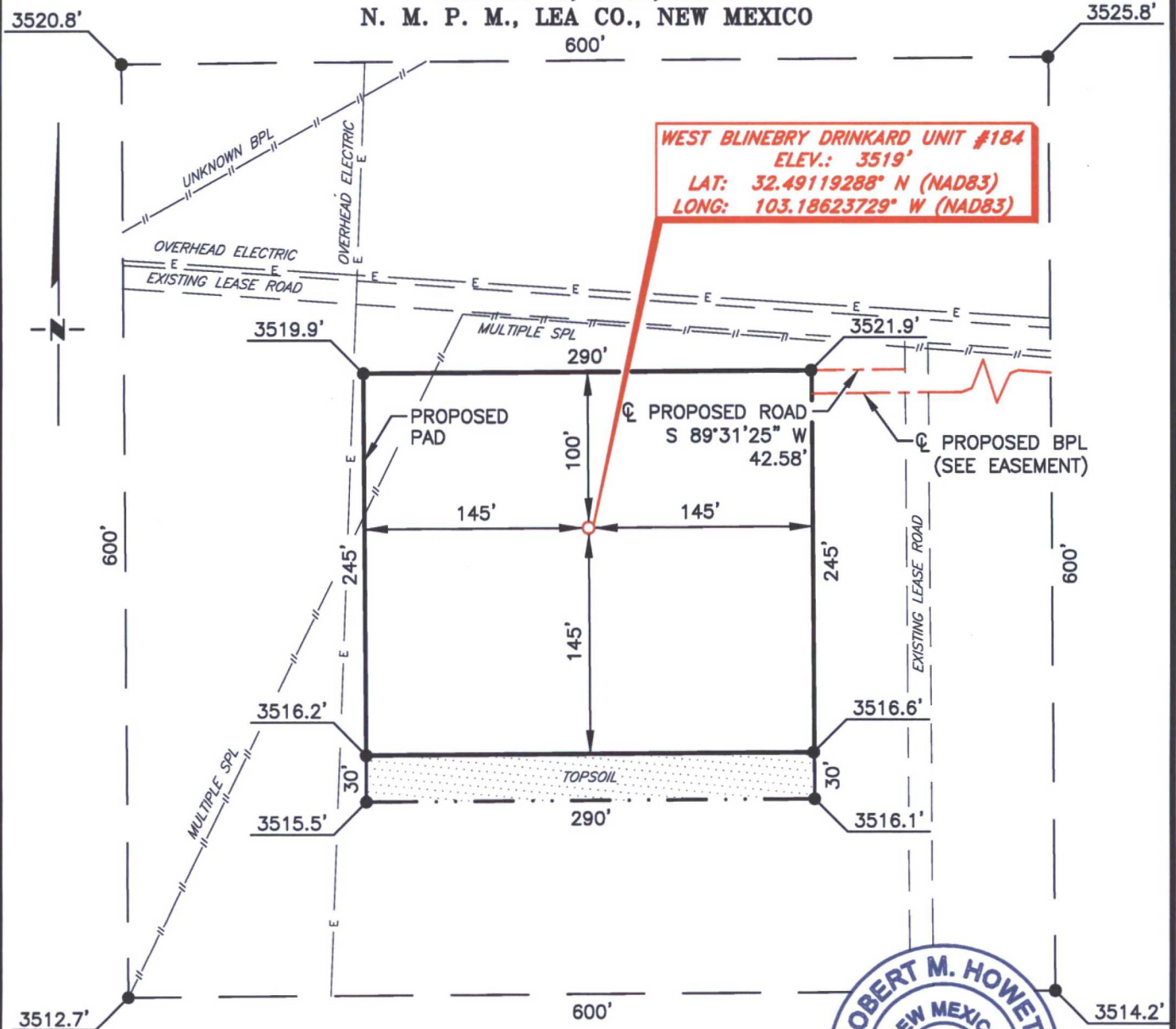
NO.	REVISION	DATE
JOB NO.: LS1611393		
DWG. NO.: 1611393VM		

RRC

308 W. BROADWAY ST., HOBBS, NM 88240 (575) 964-8200

SCALE: N. T. S.
DATE: 12-07-16
SURVEYED BY: JM/HD
DRAWN BY: LPS
APPROVED BY: RMH
SHEET: 1 OF 1

APACHE CORPORATION
WEST BLINEBRY DRINKARD UNIT #184
 (1820' FSL & 2300' FWL)
 SECTION 8, T21S, R37E
 N. M. P. M., LEA CO., NEW MEXICO

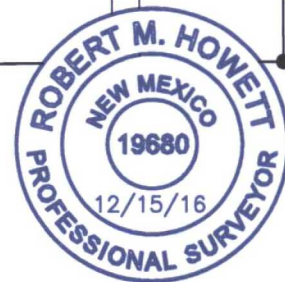


WEST BLINEBRY DRINKARD UNIT #184
 ELEV.: 3519'
 LAT: 32.49119288° N (NAD83)
 LONG: 103.18623729° W (NAD83)

SCALE: 1" = 100'
 0 50 100

BEARINGS ARE
 NAD 83 GRID - NM EAST
 DISTANCES ARE
 GROUND.

Firm No.: TX 10193838 NM 4655451



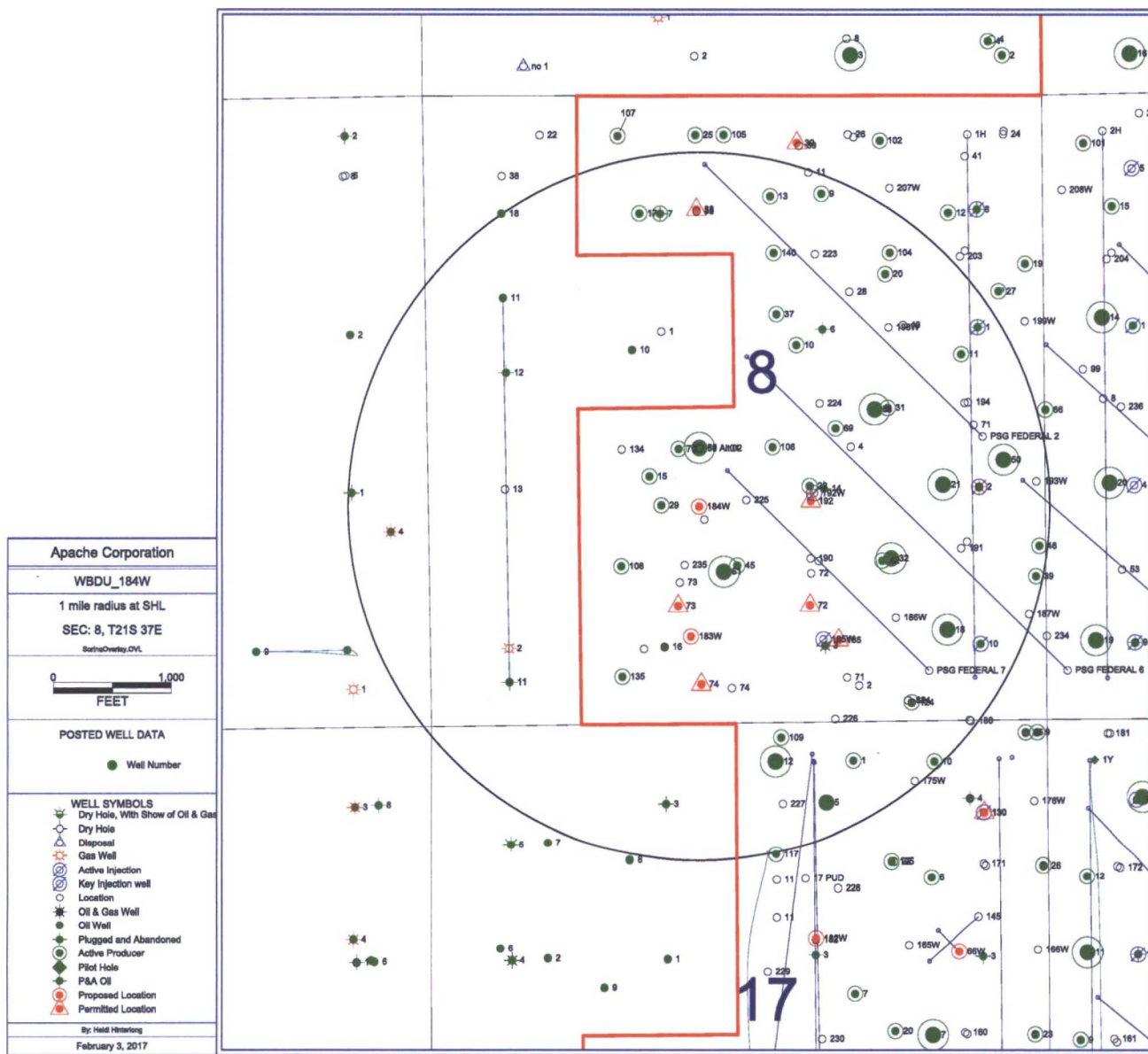
Copyright 2016 - All Rights Reserved

NO.	REVISION	DATE
JOB NO.:	LS1611393	
DWG. NO.:	1611393PAD	

RRC

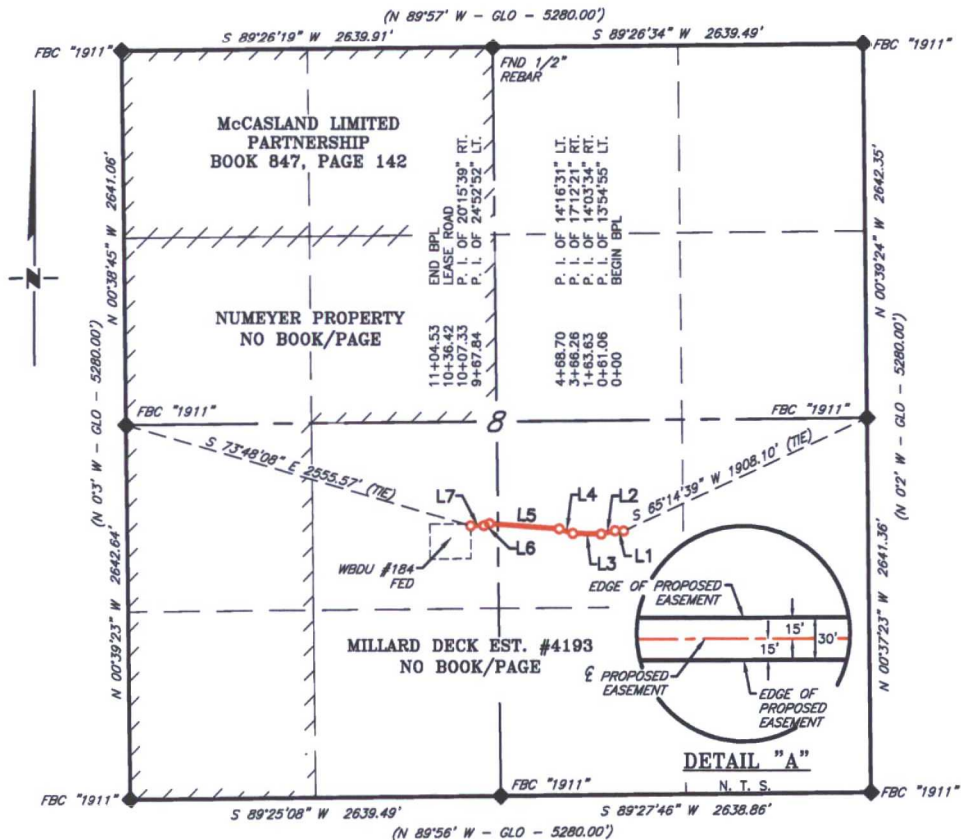
308 W. BROADWAY ST., HOBBS, NM 88240 (575) 964-8200

SCALE: 1" = 100'
DATE: 12-7-16
SURVEYED BY: JM/HD
DRAWN BY: LPS
APPROVED BY: RMH
SHEET: 1 OF 1



PETRA 2/3/2017 10:29:55 AM

APACHE CORPORATION
PROPOSED BURIED PIPELINE FOR THE
WEST BLINEBRY DRINKARD UNIT #184 WELL LOCATION
SECTION 8, T21S, R37E
N. M. P. M., LEA COUNTY, NEW MEXICO



LINE TABLE		
LINE	BEARING	LENGTH
L1	N 88°57'03" W	61.06'
L2	S 77°08'02" W	102.57'
L3	N 88°48'24" W	202.63'
L4	N 71°36'03" W	102.44'
L5	N 85°52'34" W	499.14'
L6	S 69°14'34" W	39.49'
L7	S 89°30'13" W	97.20'

SCALE: 1" = 1000'
 0 500' 1000'
 BEARINGS ARE GRID NAD 27
 NM EAST
 DISTANCES ARE HORIZ. GROUND.

LEGEND
 () RECORD DATA - GLO
 ♦ FOUND MONUMENT AS NOTED
 — PROPOSED BURIED PIPELINE

I, R. M. Howett, a N. M. Professional Surveyor, hereby certify that I prepared this plat from an actual survey made on the ground under my direct supervision, said survey and plat meet the Min. Stds. for Land Surveying in the State of N. M. and are true and correct to the best of my knowledge and belief.

Robert M. Howett
 Robert M. Howett NM PS 19680



Firm No.: TX 10193838 NM 4655451

Copyright 2016 - All Rights Reserved

NO.	REVISION	DATE
JOB NO.:	LS1611393	
DWG. NO.:	1611393PL1	

RRC

308 W. BROADWAY ST., HOBBS, NM 88240 (575) 964-8200

SCALE: 1" = 1000'
DATE: 12-6-2016
SURVEYED BY: JM/HD
DRAWN BY: CMJ
APPROVED BY: RMH
SHEET: 1 OF 2

APACHE CORPORATION
PROPOSED BURIED PIPELINE FOR THE
WEST BLINEBRY DRINKARD UNIT #184 WELL LOCATION
SECTION 8, T21S, R37E
N. M. P. M., LEA COUNTY, NEW MEXICO

DESCRIPTION

A strip of land 30 feet wide, being 1,104.53 feet or 66.941 rods in length, lying in Section 8, Township 21 South, Range 37 East, N. M. P. M., Lea County, New Mexico, being 15 feet left and 15 feet right of the following described survey of a centerline across the land of Millard Deck Est. No. 4193 according to a deed filed for record in Book ?, Page ?, of the Deed Records of Lea County, New Mexico:

BEGINNING at Engr. Sta. 0+00, a point in the Southeast quarter of Section 8, which bears, S 65°14'39" W, 1,908.10 feet from a brass cap, stamped "1911", found for the East quarter corner of Section 8;

Thence N 88°57'03" W, 61.06 feet, to Engr. Sta. 0+61.06, a P. I. of 13°54'55" left;

Thence S 77°08'02" W, 102.57 feet, to Engr. Sta. 1+63.63, a P. I. of 14°03'34" right;

Thence N 88°48'24" W, 202.63 feet, to Engr. Sta. 3+66.26, a P. I. of 17°12'21" right;

Thence N 71°36'03" W, 102.44 feet, to Engr. Sta. 4+68.70, a P. I. of 14°16'31" left;

Thence N 85°52'34" W, 499.14 feet, to Engr. Sta. 9+67.84, a P. I. of 24°52'52" left;

Thence S 69°14'34" W, 39.49 feet, to Engr. Sta. 10+07.33, a P. I. of 20°15'39" right;

Thence S 89°30'13" W, 97.20 feet, to Engr. Sta. 11+04.53, the End of Survey, a point in the Southwest quarter of Section 8, which bears, S 73°48'08" E, 2,555.57 feet from a brass cap, stamped "1911", found for the West quarter corner of Section 8.

Said strip of land contains 0.760 acres, more or less, and is allocated by forties as follows:

NW 1/4 SE 1/4	55.023 Rods	0.625 Acres
NE 1/4 SW 1/4	11.918 Rods	0.135 Acres

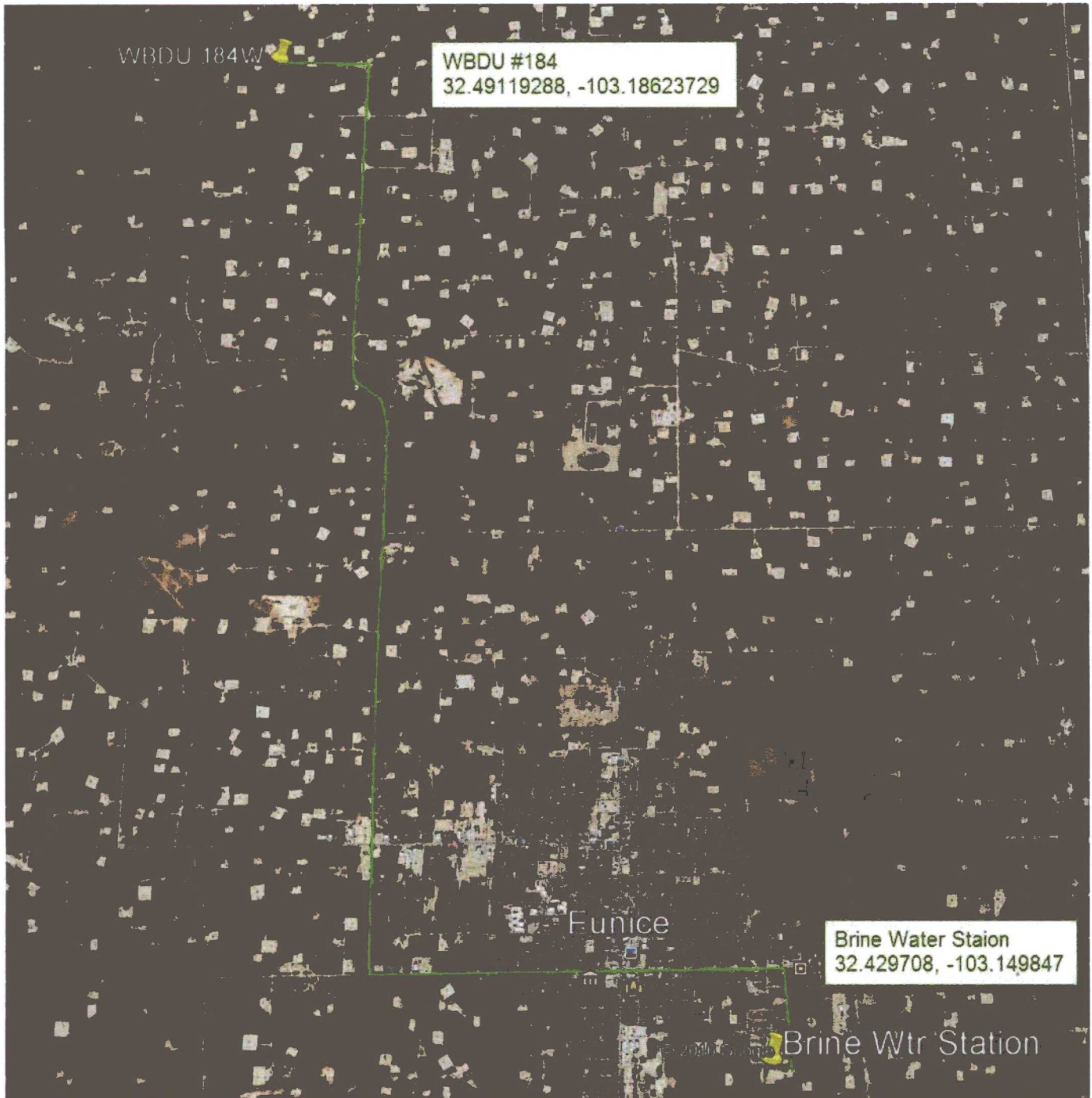
Firm No.: TX 10193838 NM 4655451

Copyright 2016 - All Rights Reserved

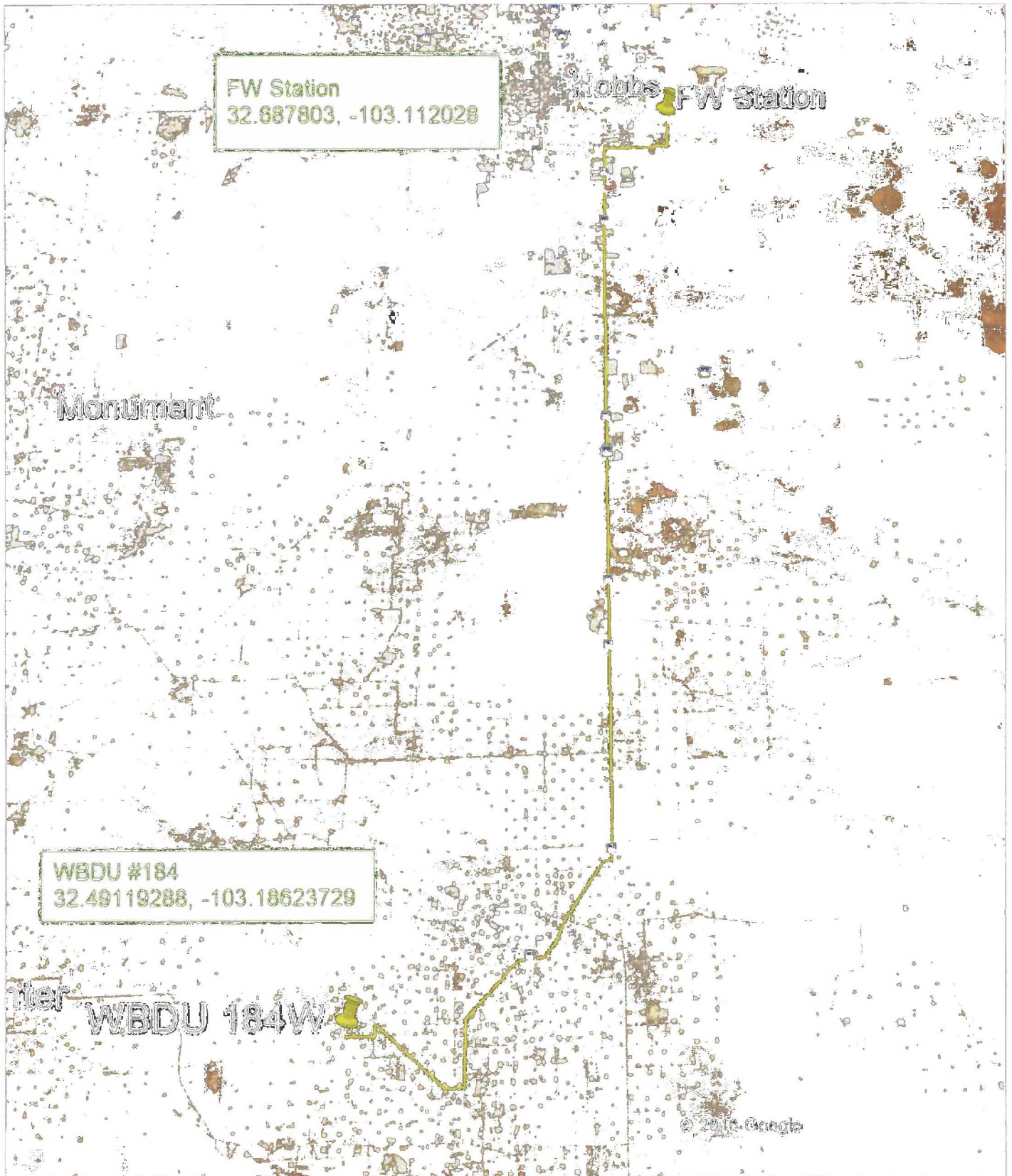
<div style="text-align: center;">  <p>RRC</p> </div>			SCALE: 1" = 1000'
			DATE: 12-6-2016
			SURVEYED BY: JM/HD
			DRAWN BY: CMJ
NO.	REVISION	DATE	APPROVED BY: RMH
JOB NO.: LS1611393			SHEET: 2 OF 2
DWG. NO.: 1611393PL2			

308 W. BROADWAY ST., HOBBS, NM 88240 (575) 964-8200

Basic Energy Brine Water Station Route to WBDU 184



H & P Water Station Route to WBDU 184



RIG ORIENTATION & LAYOUT
WEST BLINEBRY DRINKARD UNIT 184
EXHIBIT 5

