

UNITED STATES  
DEPARTMENT OF THE INTERIOR  
BUREAU OF LAND MANAGEMENTCarlsbad Field Office  
OCD Hobbs  
FORM APPROVED  
OMB NO. 1004-0137  
Expires: January 31, 2018SUNDRY NOTICES AND REPORTS ON WELLS  
Do not use this form for proposals to drill or to re-enter an  
abandoned well. Use form 3160-3 (APD) for such proposals.Lease Serial No.  
STATE

6. If Indian, Allottee or Tribe Name

7. If Unit or CA/Agreement, Name and/or No.  
NMNM88526X8. Well Name and No.  
Multiple--See Attached9. API Well No.  
Multiple--See Attached10. Field and Pool or Exploratory Area  
TRIPLE X11. County or Parish, State  
LEA COUNTY, NM

SUBMIT IN TRIPLICATE - Other instructions on page 2

1. Type of Well

☒ Oil Well ☐ Gas Well ☐ Other

2. Name of Operator

DEVON ENERGY PRODUCTION COMPANY

Contact: ERIN WORKMAN

E-Mail: Erin.workman@devn.com

3a. Address

6488 SEVEN RIVERS HIGHWAY  
ARTESIA, NM 88211

3b. Phone No. (include area code)

Ph: 405-552-7970

4. Location of Well (Footage, Sec., T., R., M., or Survey Description)

Multiple--See Attached

## 12. CHECK THE APPROPRIATE BOX(ES) TO INDICATE NATURE OF NOTICE, REPORT, OR OTHER DATA

TYPE OF SUBMISSION	TYPE OF ACTION			
<input checked="" type="checkbox"/> Notice of Intent	<input type="checkbox"/> Acidize	<input type="checkbox"/> Deepen	<input type="checkbox"/> Production (Start/Resume)	<input type="checkbox"/> Water Shut-Off
<input type="checkbox"/> Subsequent Report	<input type="checkbox"/> Alter Casing	<input type="checkbox"/> Hydraulic Fracturing	<input type="checkbox"/> Reclamation	<input type="checkbox"/> Well Integrity
<input type="checkbox"/> Final Abandonment Notice	<input type="checkbox"/> Casing Repair	<input type="checkbox"/> New Construction	<input type="checkbox"/> Recomplete	<input checked="" type="checkbox"/> Other
	<input type="checkbox"/> Change Plans	<input type="checkbox"/> Plug and Abandon	<input type="checkbox"/> Temporarily Abandon	Surface Commingling
	<input type="checkbox"/> Convert to Injection	<input type="checkbox"/> Plug Back	<input type="checkbox"/> Water Disposal	

13. Describe Proposed or Completed Operation: Clearly state all pertinent details, including estimated starting date of any proposed work and approximate duration thereof. If the proposal is to deepen directionally or recompleat horizontally, give subsurface locations and measured and true vertical depths of all pertinent markers and zones. Attach the Bond under which the work will be performed or provide the Bond No. on file with BLM/BIA. Required subsequent reports must be filed within 30 days following completion of the involved operations. If the operation results in a multiple completion or recompleat in a new interval, a Form 3160-4 must be filed once testing has been completed. Final Abandonment Notices must be filed only after all requirements, including reclamation, have been completed and the operator has determined that the site is ready for final inspection.

Devon Energy Production Company, LP respectfully requests approval for Surface Commingling due to diverse ownership of the following wells:

Thistle Unit 55H  
Sec. 22, SWSW, T23S, R33E ✓  
30-025-41488  
Triple X; Bone Spring  
Lease NMNM88526C

Thistle Unit 56H  
Sec. 22, SWSE, T23S, R33E

All wells on THE SAME unit / NOT commingling by BLM / BLM HAS NO ISSUES WITH APPROVAL

14. I hereby certify that the foregoing is true and correct.

Electronic Submission #375513 verified by the BLM Well Information System

For DEVON ENERGY PRODUCTION COMPANY LP, sent to the Hobbs

Committed to AFMSS for processing by DUNCAN WHITLOCK on 05/09/2017 (17DW0061SE)

Name (Printed/Typed) ERIN WORKMAN

Title REGULATORY COMPLIANCE PROF.

Signature (Electronic Submission)

Date 05/09/2017

## THIS SPACE FOR FEDERAL OR STATE OFFICE USE

Approved By <u>J.D.W. Whitlock</u>	Title <u>TLPET</u>	Date <u>5/9/17</u>
Conditions of approval, if any, are attached. Approval of this notice does not warrant or certify that the applicant holds legal or equitable title to those rights in the subject lease which would entitle the applicant to conduct operations thereon.	Office <u>CFO</u>	

Title 18 U.S.C. Section 1001 and Title 43 U.S.C. Section 1212, make it a crime for any person knowingly and willfully to make to any department or agency of the United States any false, fictitious or fraudulent statements or representations as to any matter within its jurisdiction.

(Instructions on page 2)

\*\* BLM REVISED \*\* BLM REVISED \*\* BLM REVISED \*\* BLM REVISED \*\* BLM REVISED \*\*

## Additional data for EC transaction #375513 that would not fit on the form

### Wells/Facilities, continued

Agreement	Lease	Well/Fac Name, Number	API Number	Location
NMNM88526X	STATE	THISTLE UNIT 55H	30-025-41488-00-S1	Sec 22 T23S R33E SWSW 150FSL 660FWL
NMNM88526X	STATE	THISTLE UNIT 56H	30-025-41340-00-S1	Sec 22 T23S R33E SWSE 150FSL 2200FEL
NMNM88526X	STATE	THISTLE UNIT 57H	30-025-41341-00-S1	Sec 22 T23S R33E SWSE 150FSL 2150FEL
NMNM88526X	STATE	THISTLE UNIT 58H	30-025-41342-00-S1	Sec 22 T23S R33E SWSE 150FSL 2100FWL
NMNM88526X	STATE	THISTLE UNIT 61H	30-025-41487-00-S1	Sec 22 T23S R33E SWSW 200FSL 660FWL
NMNM88526X	STATE	THISTLE UNIT 62H	30-025-41466-00-S1	Sec 22 T23S R33E SWSE 450FSL 2250FEL
NMNM88526X	STATE	THISTLE UNIT 63H	30-025-41467-00-S1	Sec 22 T23S R33E SWSE 450FSL 2200FEL
NMNM88526X	STATE	THISTLE UNIT 64H	30-025-41468-00-S1	Sec 22 T23S R33E SWSE 450FSL 2150FEL
NMNM88526X	STATE	THISTLE UNIT 71H	30-025-42425-00-S1	Sec 27 T23S R33E NENE 200FNL 632FEL

### 32. Additional remarks, continued

30-025-41340  
Triple X; Bone Spring  
Lease NMNM88526C

Thistle Unit 57H  
Sec. 22, SWSE, T23S, R33E  
30-025-41341  
Triple X; Bone Spring  
Lease NMNM88526C

Thistle Unit 58H  
Sec. 22, SWSE, T23S, R33E  
30-025-41342  
Triple X; Bone Spring  
Lease NMNM88526C

Thistle Unit 61H  
Sec. 22, SWSW, T23S, R33E  
30-025-41487  
Triple X; Bone Spring  
Lease NMNM88526C

Thistle Unit 62H  
Sec. 22, SWSE, T23S, R33E  
30-025-41466  
Triple X; Bone Spring  
Lease NMNM88526C

Thistle Unit 63H  
Sec. 22, SWSE, T23S, R33E  
30-025-41467  
Triple X; Bone Spring  
Lease NMNM88526C

Thistle Unit 64H  
Sec. 22, SWSE, T23S, R33E  
30-025-41468  
Triple X; Bone Spring  
Lease NMNM88526C

Thistle Unit 71H  
Sec. 22, NENE, T23S, R33E  
30-025-42425  
Triple X; Bone Spring  
Lease NMNM88526C

The Thistle North Central Tank Battery is located in Sec. 22, SESW, T23S, R33E in Lea County, New Mexico. The Thistle Unit 55H & 71H will flow into their own production header with isolation lines to route each wells production. From this point, one well will be on test and its production routed through test equipment. The Thistle Unit 56H, 57H, & 58H production will flow into their own production header with isolation lines to route each wells production. From this point, one well will be on test and its production routed through test equipment. The Thistle Unit 61H, 62H, 63H, & 64H production will flow into their own production header with isolation lines to route each wells production. From this point, one well will be on test and its production routed through test equipment. VRU will be allocated back to each well utilizing a percentage of each wells monthly oil production

The Thistle North Central Tank Battery will have six oil tanks that all 9 wells will utilize. They

**32. Additional remarks, continued**

will have a common Devon Point of Royalty Measurement Meter #390+33-289 on location in the northwest corner. Oil, gas, and water volumes from these wells will be determined by using a metering separator at the proposed facility. Oil will be sold through two common Smith LACT meters #10137763 & #P655652730

Attachments: Deliverables

Working, royalty, and overriding interest owners have been notified of this proposal via certified mail(see attached).



## APPLICATION FOR A CENTRAL TANK BATTERY

### Proposal for Thistle Unit Wells

Devon Energy Production Company, LP is requesting approval for a Central Tank Battery for the following wells:

#### Federal Lease NMNM88526C (PA)

Well Name	Location	API #	Pool 59900	BOPD	O.G.	MCFPD	BTU
Thistle Unit 55H	Sec. 22, SWSW, T23S, R33E	30-025-41488	Triple X; Bone Spring	131	42	308	1326.5
Thistle Unit 56H	Sec. 22, SWSE, T23S, R33E	30-025-41340	Triple X; Bone Spring	79	40	117	1331.4
Thistle Unit 57H	Sec. 22, SWSE, T23S, R33E	30-025-41341	Triple X; Bone Spring	63	41	53	1335.0
Thistle Unit 58H	Sec. 22, SWSE, T23S, R33E	30-025-41342	Triple X; Bone Spring	69	42	137	1331.0
Thistle Unit 61H	Sec. 22, SWSW, T23S, R33E	30-025-41487	Triple X; Bone Spring	122	40	259	1331.2
Thistle Unit 62H	Sec. 22, SWSE, T23S, R33E	30-025-41466	Triple X; Bone Spring	301	40	484	1322.6
Thistle Unit 63H	Sec. 22, SWSE, T23S, R33E	30-025-41467	Triple X; Bone Spring	146	40	408	1331.2
Thistle Unit 64H	Sec. 22, SWSE, T23S, R33E	30-025-41468	Triple X; Bone Spring	321	40	491	1331.2
Thistle Unit 71H	Sec. 27, NENE, T23S, R33E	30-025-42425	Triple X; Bone Spring	198	42	562	1335.5

Attached is a map that displays the lease and well locations in Section 22-T23S-R33E & Section 27, T23S, R33E.

### Oil & Gas metering:

The Thistle North Central Tank Battery is located in Sec. 22, SESW, T23S, R33E in Lea County, New Mexico. The Thistle Unit 55H & 71H will flow into their own production header with isolation lines to route each wells production. From this point, one well will be on test and its production routed through test equipment. The Thistle Unit 56H, 57H, & 58H production will flow into their own production header with isolation lines to route each wells production. From this point, one well will be on test and its production routed through test equipment. The Thistle Unit 61H, 62H, 63H, & 64H production will flow into their own production header with isolation lines to route each wells production. From this point, one well will be on test and its production routed through test equipment. VRU will be allocated back to each well utilizing a percentage of each wells monthly oil production.

The Thistle North Central Tank Battery will have six oil tanks that all 9 wells will utilize. They will have a common Devon Point of Royalty Measurement Meter #390-33-289 on location in the northwest corner. Oil, gas, and water volumes from these wells will be determined by using a metering separator at the proposed facility. Oil will be sold through two common Smith LACT meters #10137763 & #P655652730.

The wells on test will flow into their own two phase separator, where after separation gas combines with gas from the three phase test separator and is routed to the dedicated gas allocation meter, then to Devon's Point of Royalty Measurement Meter #390-33-289. Produced water and oil are separated, the oil is then metered with the dedicated Micro Motion Coriolis Meter, then flows into an oil production line where it is combined with the other wells oil and flows into the test heater/treater, combines with all the other wells, and into one of the 500 bbl. tanks. Any oil that is separated in the FWKO will be measured with a turbine before it combines and flows to the test heater treater. The water is metered utilizing a turbine meter, combines with the other wells on test and then flows into the test FWKO, and then into one of the 500 bbl. produced water tanks.

The wells not on test will flow into their own production header, then into a common production line with the other wells not on test, and into the two phase production separator, then into a three phase separator. After separation, the gas will combine with the two phase production separator and the rest of the wells gas production, and flow into Devon's Point of Royalty Measurement Meter #390-33-289. The oil & water production will flow from the two phase separator into the three phase production separator. After separation, the oil from the 3-phase and FWKO will combine and flow into the heater treater, then route into one of the 500 bbl. oil tanks. The water will flow into the three phase production separator, be measured by a turbine meter, then flow into the FWKO, combines with the water from the heater treater and route into the 500 bbl. water tanks.

The Thistle Unit 55H & 71H production will flow into their designated header where production is routed to either the test two phase separator or production separator. The well on test will flow into a two phase separator, then into the three phase test separator. After separation, the gas will flow into the gas allocation meter #390-49-285, then flow into a production line with the other wells gas and into Devon's Point of Royalty Measurement Meter #390-33-289. The oil is measured with a Micro Motion Coriolis Meter S\N 163269, combines with the other wells on the test side, and is routed into the test heater/treater. It then combines with oil from the wells on the production side and flows into one of the 500 bbl. oil tanks. The water is metered using a turbine meter, it then combines with the water from the other wells on test and flows into the test FWKO, flows into a production line with the water from the heater/treater and routes to one of the 500 bbl. water tanks.

The Thistle Unit 56H, 57H, & 58H production will flow into their designated header where production is routed to either the test two phase separator or production separator. The well on test will flow into a two phase separator, then into the three phase test separator. After separation, the gas will flow into the gas allocation meter #390-49-286 then to Devon's Point of Royalty



Measurement Meter #390-33-289. The oil is measured with a Micro Motion Coriolis Meter S\N 163270, combines with the other wells on the test side, and is routed into the test heater\treater. It then combines with oil from the wells on the production side and flows into one of the 500 bbl. oil tanks. The water is metered using a turbine meter, it then combines with the water from the other wells on test and flows into the test FWKO, flows into a production line with the water from the heater\treater and routes to one of the 500 bbl. water tanks.

The Thistle Unit 61H, 62H, 63H, & 64H production will flow into their designated header where production is routed to either the test two phase separator or production separator. The well on test will flow into a two phase separator, then into the three phase test. After separation, the gas will flow into the gas allocation meter #390-49-287 then to Devon's Point of Royalty Measurement Meter #390-33-289. The oil is measured with a Micro Motion Coriolis Meter S\N 163273, combines with the other wells on the test side, and is routed into the test heater\treater. It then combines with oil from the wells on the production side and flows into one of the 500 bbl. oil tanks. The water is metered using a turbine meter, it then combines with the water from the other wells on test and flows into the test FWKO, flows into a production line with the water from the heater\treater and routes to one of the 500 bbl. water tanks.

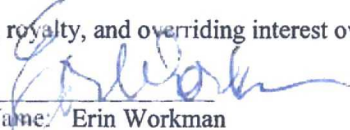
Oil production will be allocated on a daily basis based the most recent well test for each well. The 55H & 71H will be metered with a Micro Motion Coriolis Meter S\N 163269, the 56H, 57H, & 58H will be metered with a Micro Motion Coriolis Meter S\N 163276, and the 61H, 62H, 63H, & 64H will be metered with a Micro Motion Coriolis Meter S\N 163273. These Coriolis meters utilized will be proven, as per API, NMOCD, and BLM specifications, when installed, once per month for the first 3 months (to establish a consistent repeatability factor), and then quarterly thereafter, the factor obtained will be used to allocate the production volumes. Gas production from the 55H & 71H will be allocated on a daily basis utilizing the gas allocation meter #390-49-285. Gas production from the 57H, 58H, & 59H will be allocated on a daily basis utilizing the gas allocation meter #390-49-286. Gas production from the 61H, 62H, 63H, & 64H will be allocated on a daily basis utilizing the gas allocation meter #390-49-287. The gas production from the production equipment, the test equipment, and the VRU meter #390-00-288 will commingle and flow through Devon's Point of Royalty Measurement Meter #390-33-289. These meters will be calibrated on a regular basis per API, NMOCD and BLM specifications. The BLM and OCD will be notified of any future changes in the facilities.

#### Process and Flow Descriptions:

The flow of produced fluids is shown in detail on the enclosed facility diagram, along with a description of each vessel and map which shows the lease boundaries, location of wells, facility, and gas sales meter. The proposed commingling is appropriate based on the BLM's guidance in IM 2013-152. The proposed commingling will maximize the ultimate recovery of oil and/or gas from the federal leases and will reduce environmental impacts by minimizing surface disturbance and emissions. The proposed commingling will reduce operating expenses, as well as, not adversely affect federal royalty income, production accountability, or the distribution of royalty.

Devon Energy Production Company, LP understands the requested approval will not constitute the granting of any right-of-way or construction rights not granted by the lease instrument.

Working, royalty, and overriding interest owners have been notified of this proposal via certified mail (see attached).

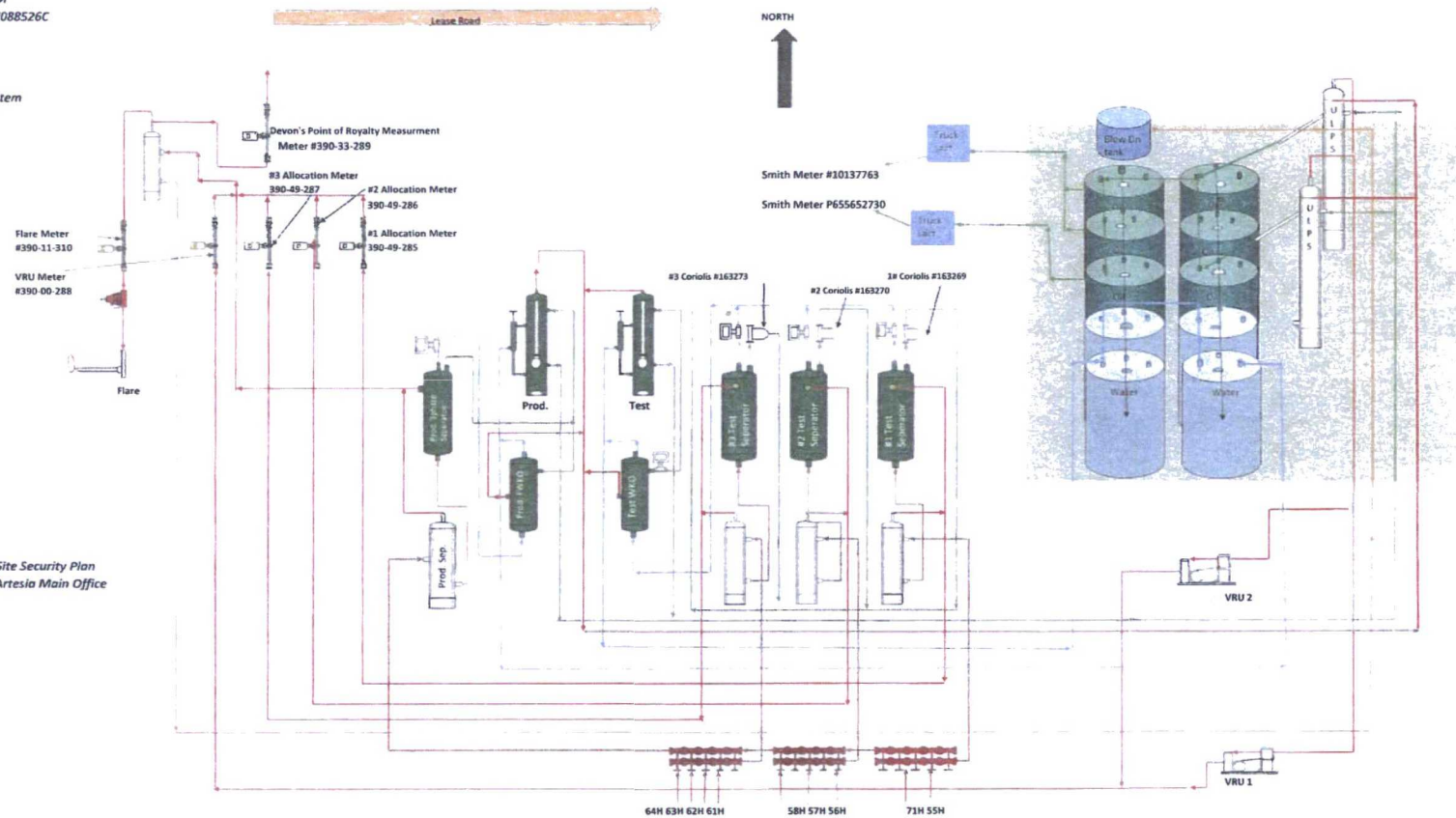
Signed:   
Printed Name: Erin Workman  
Title: Regulatory Compliance Professional  
Date: 09.06.16

Thistle North CTB  
 Sec. 22.T235-R33E  
 Lea County, NM  
 Lease: NMNM088526C

# PROCESS FLOW DIAGRAM

Production System  
 Closed

Note:  
 Devon Energy Site Security Plan  
 located in the Artesia Main Office



# Economic Justification Report

Thistle Unit 44H CTB NMNM088526C

Value (bbl): \$27.34

Value (mcf): \$2.52

Well Name & Number	Type	State Lease	Fed Lease 2 (if applicable)	Royalty Rate	Fed Lease 3 (if applicable)	Royalty Rate	BOPD	Oil Gravity @ 60°	MCFPD	Dry BTU
Thistle Unit 43H	Sweet	NMNM088526C		12.50%			190	42	215	1297.7
Thistle Unit 44H	Sweet	NMNM088526C		12.50%			143	41	218	1302.2
Thistle Unit 46H	Sweet	NMNM088526C		12.50%			122	41	307	1285.9
Thistle Unit 47H	Sweet	NMNM088526C		12.50%			317	42	362	1318.4
Thistle Unit 48H	Sweet	NMNM088526C		12.50%			364	42	715	1294.9
Thistle Unit 49H	Sweet	NMNM088526C		12.50%			265	41	534	1326.4
Thistle Unit 50H	Sweet	NMNM088526C		12.50%			212	41	372	1310.2
Thistle Unit 65H	Sweet	NMNM088526C		12.50%			285	40	504	1262.9
Thistle Unit 66H	Sweet	NMNM088526C		12.50%				44		1073.7

Signed: Erin Workman

9/8/2016

Printed Name: Erin Workman

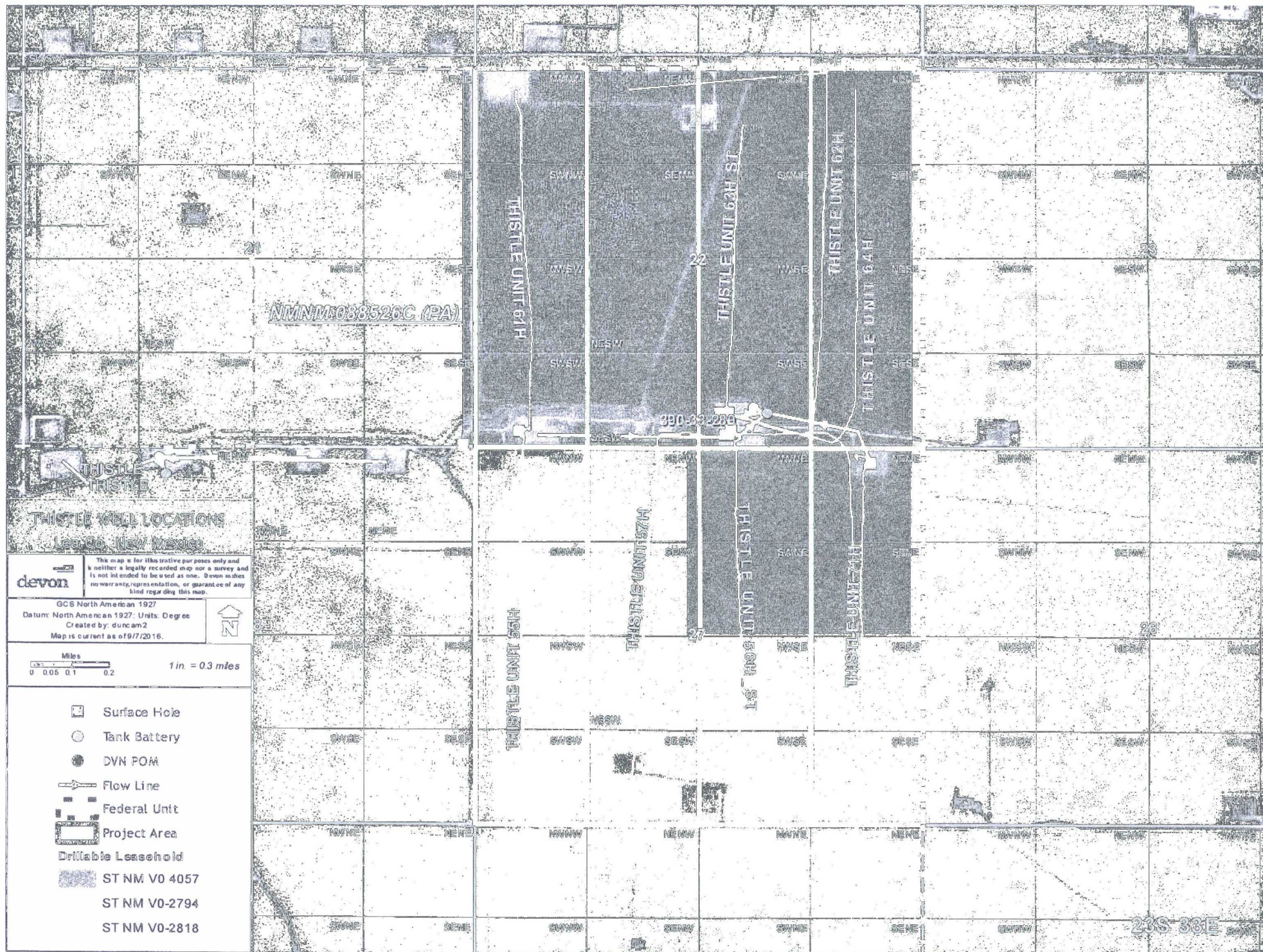
Regulatory Analyst

## Economic Combined Production

BOPD	Oil Gravity @ 60°	MCFPD	Dry BTU
1898.0	41.3	3227.0	1299.3

There are no material quality differences in oil or gas production from the wells in this application, therefore there will be no impact on the royalty value from an oil or gas marketing perspective.







**DEPARTMENT OF THE INTERIOR  
BUREAU OF LAND MANAGEMENT  
CASE RECORDATION  
(MASS) Serial Register Page**

Run Time: 08:11 AM

Page 1 of 1

Run Date: 09/07/2016

01 02-25-1920;041STAT0437;30USC181

Case Type 318230: O&G PARTICIPATING AREA

Commodity 459: OIL & GAS

Case Disposition: AUTHORIZED

Total Acres

3,520.000

Serial Number

NMNM-- - 088526C

Name & Address			Serial Number: NMNM-- - 088526C		Int Rel	% Interest
BLM CARLSBAD FO	620 E GREENE ST	CARLSBAD NM 88220	OFFICE OF RECORD			0.000000000
DEVON ENERGY CORP	333 W SHERIDAN AVE	OKLAHOMA CITY OK 731025010	OPERATOR			100.000000000

Serial Number: NMNM-- - 088526C

Mer Twp	Rng	Sec	STyp	SNr Suff	Subdivision	District/Field Office	County	Mgmt Agency
23	0230S	0330E	021	ALIQ	E2;	CARLSBAD FIELD OFFICE	LEA	BUREAU OF LAND MGMT
23	0230S	0330E	022	ALIQ	ALL;	CARLSBAD FIELD OFFICE	LEA	BUREAU OF LAND MGMT
23	0230S	0330E	027	ALIQ	ALL;	CARLSBAD FIELD OFFICE	LEA	BUREAU OF LAND MGMT
23	0230S	0330E	028	ALIQ	ALL;	CARLSBAD FIELD OFFICE	LEA	BUREAU OF LAND MGMT
23	0230S	0330E	033	ALIQ	ALL;	CARLSBAD FIELD OFFICE	LEA	BUREAU OF LAND MGMT
23	0230S	0330E	034	ALIQ	ALL;	CARLSBAD FIELD OFFICE	LEA	BUREAU OF LAND MGMT

Serial Number: NMNM-- - 088526C					
Act Date	Code	Action	Action Remark	Pending Office	
06/09/2013	387	CASE ESTABLISHED			
06/09/2013	500	GEOGRAPHIC NAME	INIT BONE SPRING PA C		
06/09/2013	500	GEOGRAPHIC NAME	THISLITE UNIT		
06/09/2013	515	REFERENCE NUMBER (AFS)	AFS - NM		
06/09/2013	516	FORMATION	BONE SPRING		
06/09/2013	526	ACRES-FED INT 100%	3520 - 100%		
06/09/2013	664	PA EFFECTIVE	/A/ INITIAL		
06/09/2013	868	EFFECTIVE DATE	/A/ INITIAL		
05/12/2016	595	WELL DETERMINED PAYING	43H 59H 60H 64H		
05/16/2016	580	PROPOSAL RECEIVED	/A/ INITIAL		
06/10/2016	665	PA APPROVED			

Serial Number: NMNM-- - 088526C						
Line Nr	Remarks					
0001	/A/ PA ALLOCATION EFFECTIVE 06/09/2013					
0002	LEASE SERIAL NO TR# STATUS ACRES %					
0003	NMNM	94186	1	FC	960.00	27.2727
0004	STATE		6	FC	640.00	18.1818
0005	STATE		7	FC	160.00	4.5455
0006	STATE		8	FC	640.00	18.1818
0007	STATE		10	FC	640.00	18.1818
0008	STATE		11	FC	480.00	13.6364
0009	TOTAL				3,520.00	100.0000

NO WARRANTY IS MADE BY BLM FOR USE OF THE DATA FOR PURPOSES NOT INTENDED BY BLM

## E-CERTIFIED MAILING LIST

Commingle Mailing Reference: **Thistle North CTB**

<u>Repondent Name/Address:</u>	<u>E-Certified Mailing Number:</u>
ConocoPhillips Company 600 North Dairy Ashford Houston, Texas 77079	9214 8901 5271 8100 1830 76
Trainer Partners, Ltd. P. O. Box 3788 Midland, Texas 79702	9214 8901 5271 8100 1839 83
Performance Oil & Gas Company 5400 Lyndon B. Johnson Freeway, Suite 1500 Dallas, Texas 75240-1017	9214 8901 5271 8100 1839 90
Angelo Holdings LLC P. O. Box 50086 Midland, Texas 79710	9214 8901 5271 8100 1840 03
Lucille H. Pipkin Trust Stuart D. Shanor and Howard C. Kastler Co-Trustees P. O. Box 1174 Roswell, NM 88202-1174	9214 8901 5271 8100 1840 10
Commission of Public Lands New Mexico State Land Office 310 Old Santa Fe Trail Santa Fe, NM 87501	9214 8901 5271 8100 1840 27
Joseph William Foran and Nancy N. Foran One Lincoln Center, Suite 1500 5400 LBJ Freeway Dallas, TX 75240-1017	9214 8901 5271 8100 1840 34
Magnum Hunter Production, Inc. 202 S. Cheyenne, Suite 1000 Tulsa, OK 74103	9214 8901 5271 8100 1840 41
Mitchell Exploration Inc. 6212 Homestead Blvd. Midland, TX 79707	9214 8901 5271 8100 1810 58



DATE IN	SUSPENSE	ENGINEER	LOGGED IN	TYPE	APP NO.
---------	----------	----------	-----------	------	---------

ABOVE THIS LINE FOR DIVISION USE ONLY

**NEW MEXICO OIL CONSERVATION DIVISION**  
**- Engineering Bureau -**  
 1220 South St. Francis Drive, Santa Fe, NM 87505



**ADMINISTRATIVE APPLICATION CHECKLIST**

THIS CHECKLIST IS MANDATORY FOR ALL ADMINISTRATIVE APPLICATIONS FOR EXCEPTIONS TO DIVISION RULES AND REGULATIONS WHICH REQUIRE PROCESSING AT THE DIVISION LEVEL IN SANTA FE

**Application Acronyms:**

**[NSL-Non-Standard Location] [NSP-Non-Standard Proration Unit] [SD-Simultaneous Dedication]**  
**[DHC-Downhole Commingling] [CTB-Lease Commingling] [PLC-Pool/Lease Commingling]**  
**[PC-Pool Commingling] [OLS - Off-Lease Storage] [OLM-Off-Lease Measurement]**  
**[WFX-Waterflood Expansion] [PMX-Pressure Maintenance Expansion]**  
**[SWD-Salt Water Disposal] [IPI-Injection Pressure Increase]**  
**[EOR-Qualified Enhanced Oil Recovery Certification] [PPR-Positive Production Response]**

**[1] TYPE OF APPLICATION - Check Those Which Apply for [A]**

**[A] Location - Spacing Unit - Simultaneous Dedication**  
☐ NSL ☐ NSP ☐ SD

Check One Only for [B] or [C]

**[B] Commingling - Storage - Measurement**  
☐ DHC ☒ CTB ☐ PLC ☐ PC ☐ OLS ☐ OLM

**[C] Injection - Disposal - Pressure Increase - Enhanced Oil Recovery**  
☐ WFX ☐ PMX ☐ SWD ☐ IPI ☐ EOR ☐ PPR

**[D] Other: Specify** \_\_\_\_\_

**[2] NOTIFICATION REQUIRED TO: - Check Those Which Apply, or ☐ Does Not Apply**

**[A] ☒ Working, Royalty or Overriding Royalty Interest Owners**

**[B] ☐ Offset Operators, Leaseholders or Surface Owner**

**[C] ☐ Application is One Which Requires Published Legal Notice**

**[D] ☒ Notification and/or Concurrent Approval by BLM or SLO**  
 U.S. Bureau of Land Management - Commissioner of Public Lands, State Land Office

**[E] ☐ For all of the above, Proof of Notification or Publication is Attached, and/or,**

**[F] ☐ Waivers are Attached**

**[3] SUBMIT ACCURATE AND COMPLETE INFORMATION REQUIRED TO PROCESS THE TYPE OF APPLICATION INDICATED ABOVE.**

**[4] CERTIFICATION:** I hereby certify that the information submitted with this application for administrative approval is **accurate** and **complete** to the best of my knowledge. I also understand that **no action** will be taken on this application until the required information and notifications are submitted to the Division.

*Note: Statement must be completed by an individual with managerial and/or supervisory capacity.*

Erin Workman  
 Print or Type Name

Signature

Regulatory Compliance Prof.  
 Title

09.07.16  
 Date

Erin.Workman@dmv.com  
 E-mail Address

District I  
1625 N. French Drive, Hobbs, NM 88240  
District II  
1301 W. Grand Ave, Artesia, NM 88210  
District III  
1000 Rio Brazos Road, Aztec, NM 87410  
District IV  
1220 S. St Francis Dr, Santa Fe, NM  
87505

State of New Mexico  
Energy, Minerals and Natural Resources Department

Form C-107-B  
Revised June 10, 2003

**OIL CONSERVATION DIVISION**  
1220 S. St Francis Drive  
Santa Fe, New Mexico 87505

Submit the original  
application to the Santa Fe  
office with one copy to the  
appropriate District Office.

**APPLICATION FOR SURFACE COMMINGLING (DIVERSE OWNERSHIP)**

OPERATOR NAME: Devon Energy Production Co., LP  
OPERATOR ADDRESS: 333 W Sheridan Avenue, Oklahoma City, OK 73102  
APPLICATION TYPE:  
☐ Pool Commingling ☒ Lease Commingling ☐ Pool and Lease Commingling ☐ Off-Lease Storage and Measurement (Only if not Surface Commingled)  
LEASE TYPE: ☐ Fee ☐ State ☒ Federal  
Is this an Amendment to existing Order? ☐ Yes ☒ No If "Yes", please include the appropriate Order No. \_\_\_\_\_  
Have the Bureau of Land Management (BLM) and State Land office (SLO) been notified in writing of the proposed commingling  
☒ Yes ☐ No

**(A) POOL COMMINGLING**  
Please attach sheets with the following information

(1) Pool Names and Codes	Gravities / BTU of Non-Commingled Production	Calculated Gravities / BTU of Commingled Production		Calculated Value of Commingled Production	Volumes

(2) Are any wells producing at top allowables? ☐ Yes ☐ No  
(3) Has all interest owners been notified by certified mail of the proposed commingling? ☐ Yes ☐ No.  
(4) Measurement type: ☐ Metering ☐ Other (Coriolis Test Method)  
(5) Will commingling decrease the value of production? ☐ Yes ☐ No If "yes", describe why commingling should be approved

**(B) LEASE COMMINGLING**  
Please attach sheets with the following information

(1) Pool Name and Code.  
(2) Is all production from same source of supply? ☒ Yes ☐ No  
(3) Has all interest owners been notified by certified mail of the proposed commingling? ☒ Yes ☐ No  
(4) Measurement type: ☒ Metering ☒ Other (Well Test Method & Coriolis Test )

**(C) POOL and LEASE COMMINGLING**  
Please attach sheets with the following information

(1) Complete Sections A and E.

**(D) OFF-LEASE STORAGE and MEASUREMENT**  
Please attached sheets with the following information

(1) Is all production from same source of supply? ☐ Yes ☐ No  
(2) Include proof of notice to all interest owners.

**(E) ADDITIONAL INFORMATION (for all application types)**  
Please attach sheets with the following information

(1) A schematic diagram of facility, including legal location.  
(2) A plat with lease boundaries showing all well and facility locations. Include lease numbers if Federal or State lands are involved.  
(3) Lease Names, Lease and Well Numbers, and API Numbers.

I hereby certify that the information above is true and complete to the best of my knowledge and belief.

SIGNATURE: Erin Workman TITLE: Regulatory Compliance Prof. DATE 09.08.16

TYPE OR PRINT NAME: Erin Workman TELEPHONE NUMBER: 405-552-7970

E-MAIL ADDRESS: Erin.workman@dvn.com