

District I
1625 N. French Dr., Hobbs, NM 88240
Phone: (575) 393-6161 Fax: (575) 393-0720
District II
811 S. First St., Artesia, NM 88210
Phone: (575) 748-1283 Fax: (575) 748-9720
District III
1000 Rio Brazos Road, Aztec, NM 87410
Phone: (505) 334-6178 Fax: (505) 334-6170
District IV
1220 S. St. Francis Dr., Sante Fe, NM 87505
Phone: (505) 476-3460 Fax: (505) 476-3462

State of New Mexico
Energy, Minerals & Natural Resources
Department
OIL CONSERVATION DIVISION
1220 South St. Francis Dr.
Sante Fe, NM 87505

FORM C-102

Revised August 1, 2011

Submit one copy to appropriate

District Office

☐ AMENDED REPORT

WELL LOCATION AND ACREAGE DEDICATION PLAT

¹ API Number 30-025-41992	² Pool Code 97900	³ Pool Name Red Hills; Upper Bone Spring Shale
⁴ Property Code	⁵ Property Name DIAMOND 5 FED COM	⁶ Well Number #8H
⁷ OGRID No. 7377	⁸ Operator Name EOG RESOURCES, INC.	⁹ Elevation 3376'

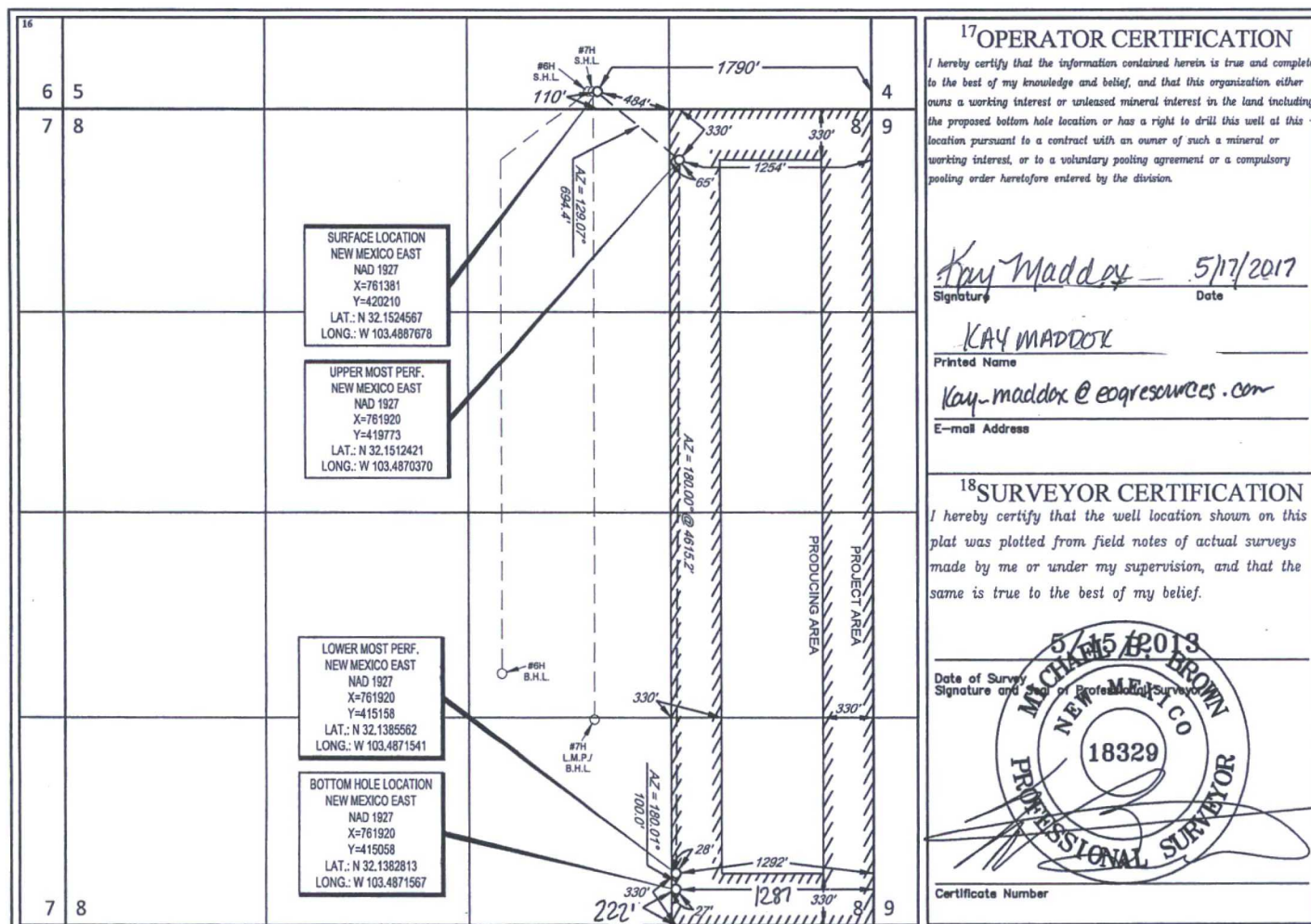
¹⁰Surface Location

UL or lot no.	Section	Township	Range	Lot Idn	Feet from the	North/South line	Feet from the	East/West line	County
0	5	25-S	34-E	-	110'	SOUTH	1790'	EAST	LEA

UL or lot no.	Section	Township	Range	Lot Idn	Feet from the	North/South line	Feet from the	East/West line	County
P	8	25-S	34-E	-	222	SOUTH	1287	EAST	LEA

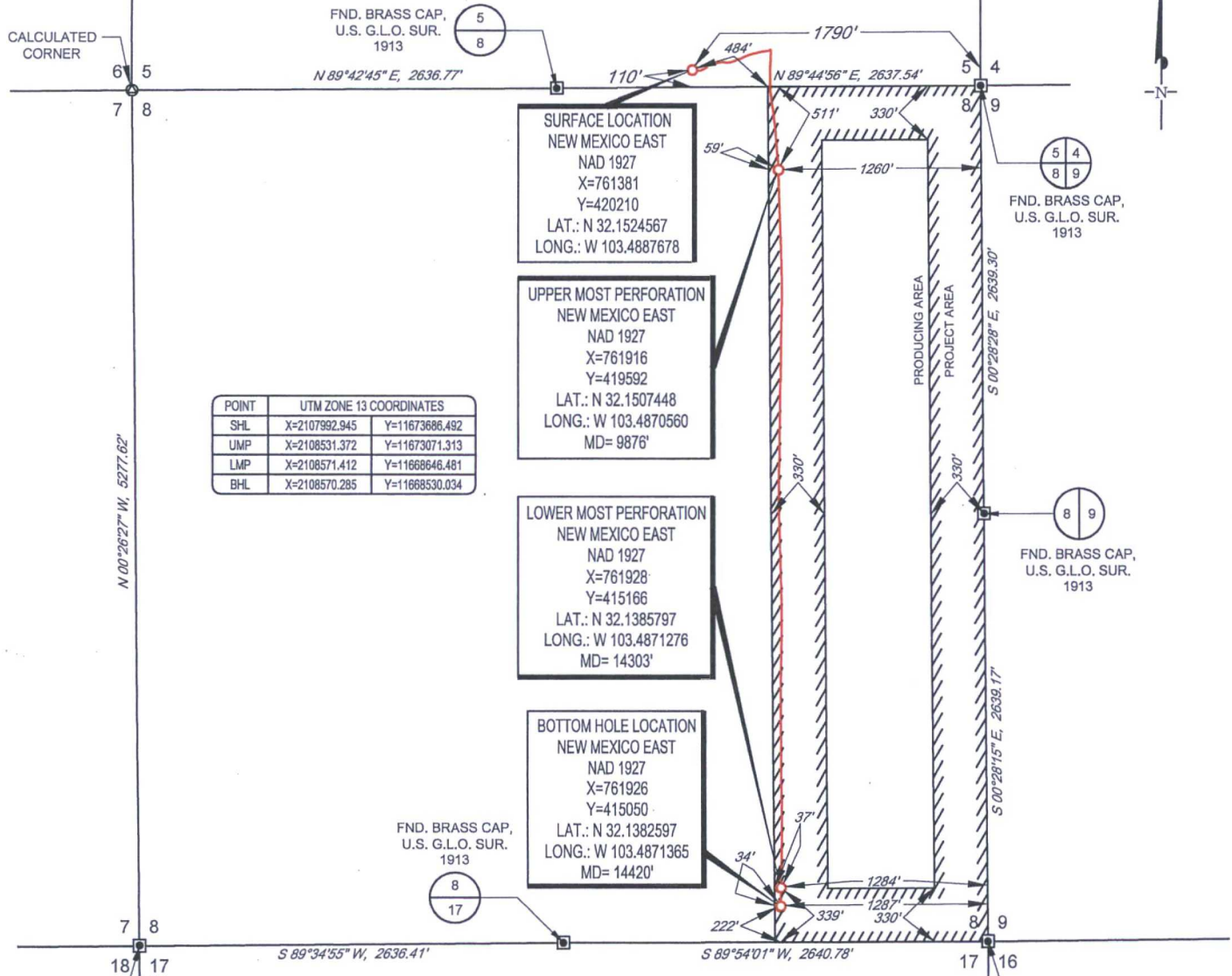
¹² Dedicated Acres 160	¹³ Joint or Infill	¹⁴ Consolidation Code	¹⁵ Order No.
--------------------------------------	-------------------------------	----------------------------------	-------------------------

No allowable will be assigned to this completion until all interests have been consolidated or a non-standard unit has been approved by the division.



SCALE: 1" = 1000'

SECTION 5, TOWNSHIP 25-S, RANGE 34-E, N.M.P.M.
LEA COUNTY, NEW MEXICO



POINT	UTM ZONE 13 COORDINATES	
SHL	X=2107992.945	Y=11673686.492
UMP	X=2108531.372	Y=11673071.313
LMP	X=2108571.412	Y=11668646.481
BHL	X=2108570.285	Y=11668530.034

**SURFACE LOCATION
NEW MEXICO EAST
NAD 1927
X=761381
Y=420210
LAT.: N 32.1524567
LONG.: W 103.4887678**

**UPPER MOST PERFORATION
NEW MEXICO EAST
NAD 1927
X=761916
Y=419592
LAT.: N 32.1507448
LONG.: W 103.4870560
MD= 9876'**

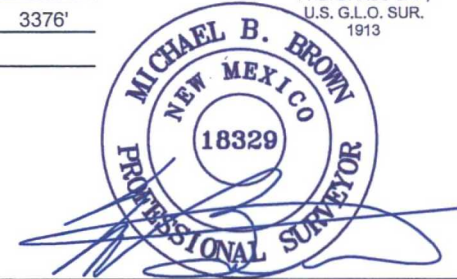
**LOWER MOST PERFORATION
NEW MEXICO EAST
NAD 1927
X=761928
Y=415166
LAT.: N 32.1385797
LONG.: W 103.4871276
MD= 14303'**

**BOTTOM HOLE LOCATION
NEW MEXICO EAST
NAD 1927
X=761926
Y=415050
LAT.: N 32.1382597
LONG.: W 103.4871365
MD= 14420'**

LEASE NAME & WELL NO.: DIAMOND 5 FED COM #8H
SECTION 5 TWP 25-S RGE 34-E SURVEY N.M.P.M.
COUNTY LEA STATE NM ELEVATION 3376'
DESCRIPTION 110' FSL & 1790' FEL



TOPOGRAPHIC
LOYALTY INNOVATION LEGACY
1400 EVERMAN PARKWAY, Ste. 197 • FT. WORTH, TEXAS 76140
TELEPHONE: (817) 744-7512 • FAX (817) 744-7548
2903 NORTH BIG SPRING • MIDLAND, TEXAS 79705
TELEPHONE: (432) 682-1653 OR (800) 767-1653 • FAX (432) 682-1743
WWW.TOPOGRAPHIC.COM



Michael Blake Brown, P.S. No. 18329
MARCH 10, 2017

DIAMOND 5 FED COM #8H AS-COMPLETED	REVISION:	
	INT	DATE
DATE: 03/10/17		
FILE:AD_DIAMOND5FEDCOM_8H		
DRAWN BY: A.C.C.		
SHEET: 1 OF 1		

NOTES:
1. ORIGINAL DOCUMENT SIZE: 8.5" X 11"
2. ALL BEARINGS, DISTANCES, AND COORDINATE VALUES CONTAINED HEREIN ARE GRID BASED UPON THE NEW MEXICO STATE PLANE COORDINATE SYSTEM, EAST ZONE, U.S. SURVEY FEET, NORTH AMERICAN DATUM 19 27.
3. THIS EASEMENT/SERVITUDE LOCATION SHOWN HEREON HAS BEEN SURVEYED ON THE GROUND UNDER MY SUPERVISION AND PREPARED ACCORDING TO THE EVIDENCE FOUND AT THE TIME OF SURVEY, AND DATA PROVIDED BY EOG RESOURCES, INC. THIS CERTIFICATION IS MADE AND LIMITED TO THOSE PERSONS OR ENTITIES SHOWN ON THE FACE OF THIS PLAT AND IS NON-TRANSFERABLE. THIS SURVEY IS CERTIFIED FOR THIS TRANSACTION ONLY.