

600' ARCHEOLOGICAL EL = 3773.9' EL = 3762.6'

340' PROPOSED WELL PAD

30'X340' STOCK PILE AREA

EL = 3775.4' EL = 3768.3'

170'N

170'W 170'E

340' 340'

170'S

BILBREY 34 B2MD FEDERAL  
COM #1H SHL  
NMSP-E (NAD 83)  
N (Y) = 520337.0'  
E (X) = 746036.4'  
LAT. = 32°25'43.41"N  
LONG. = 103°40'11.60"W

NMSP-E (NAD 27)  
N (Y) = 520276.2'  
E (X) = 704854.3'  
LAT. = 32.428602827°N  
LONG. = 103.669400938°W

EL = 3787.3' EL = 3781.9'

340'

PROP. LEVEE ROAD 1'

SEC. 34, T21S, R32E  
SEC. 3, T22S, R32E

EL = 3787.3' EL = 3785.1'

600' ARCHEOLOGICAL



SECTION 34, T 21S, R 32E, N.M.P.M.

COUNTY: LEA                      STATE: NM

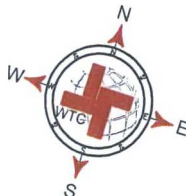
DESCRIPTION: 270' FSL & 405' FWL

OPERATOR: MEWBOURNE OIL COMPANY

WELL NAME: BILBREY 34 B2MD FEDERAL  
COM-#1H



**W T C, INC.**  
405 S.W. 1st. STREET  
ANDREWS, TEXAS 79714  
(432) 523-2181



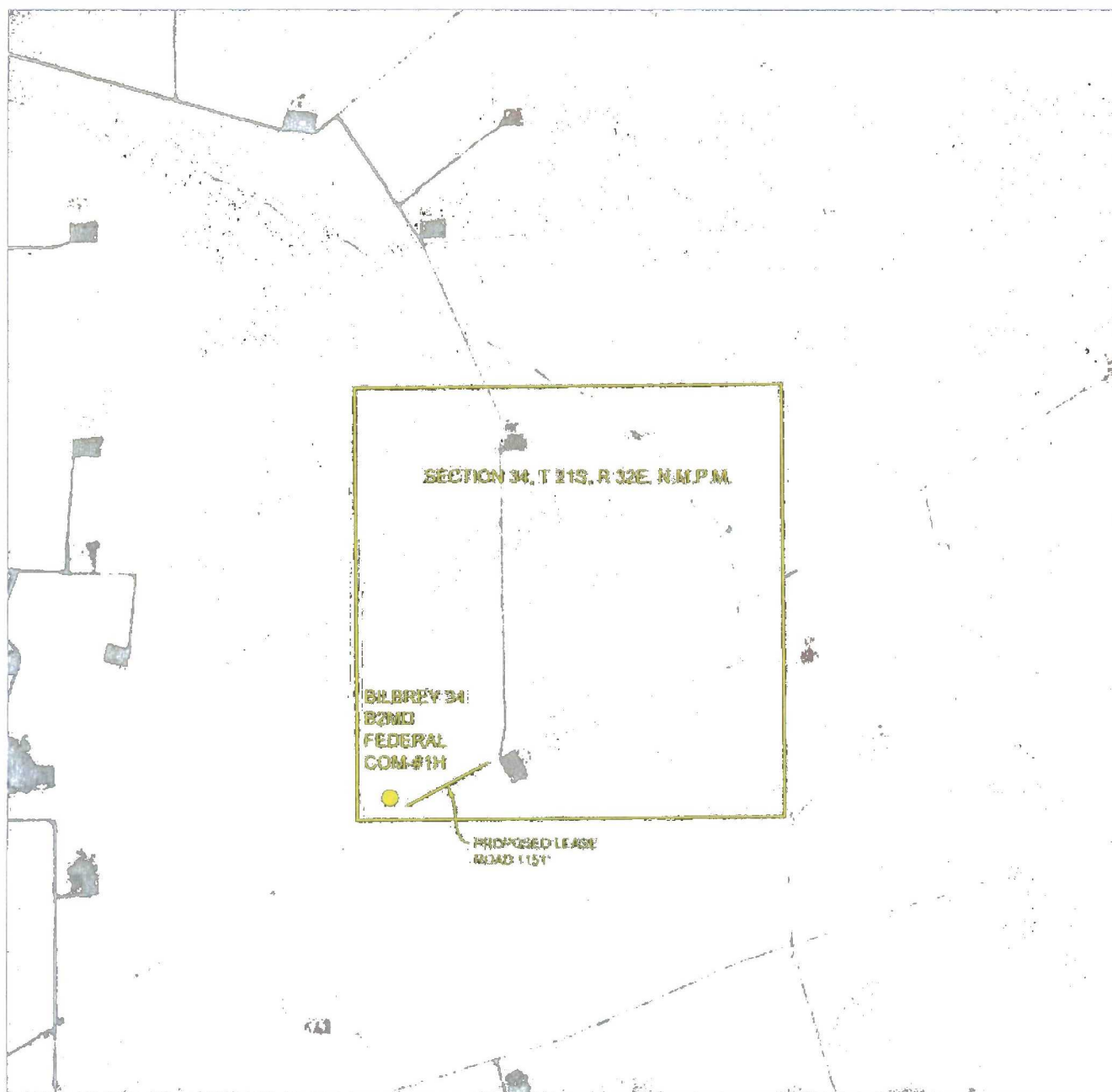
DRIVING DIRECTIONS:

FROM THE INTERSECTION OF HWY 62-180 AND CAMPBELL ROAD, GO SOUTH ON CAMPBELL ROAD 5.8 MILES TURN LEFT ON LEASE ROAD, GO WEST 1 MILE AND TURN RIGHT, GO 1 MILE AND TURN RIGHT, GO 1.1 MILE AND TURN LEFT, GO 1 MILE AND TURN RIGHT, GO 1.6 MILES AND LATHE FOR PROPOSED ROAD IS ON THE WEST CORNER OF EXISTING PAD.



MEWBOURNE OIL COMPANY

# AERIAL MAP



0                      1000                      2000                      4000

GRAPHIC SCALE 1" = 2000'

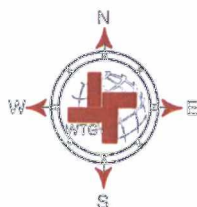
SECTION 34, T 21S, R 32E, N.M.P.M.

COUNTY: LEA                      STATE: NM

DESCRIPTION: 270' FSL & 405' FWL

OPERATOR: MEWBOURNE OIL COMPANY

WELL NAME: BILBREY 34 B2MD FEDERAL  
COM-#1H



DRIVING DIRECTIONS:

FROM THE INTERSECTION OF HWY 62-180 AND CAMPBELL ROAD, GO SOUTH ON CAMPBELL ROAD 5.8 MILES TURN LEFT ON LEASE ROAD, GO WEST 1 MILE AND TURN RIGHT, GO 1 MILE AND TURN RIGHT, GO 1.1 MILE AND TURN LEFT, GO 1 MILE AND TURN RIGHT, GO 1.6 MILES AND LATHE FOR PROPOSED ROAD IS ON THE WEST CORNER OF EXISTING PAD.



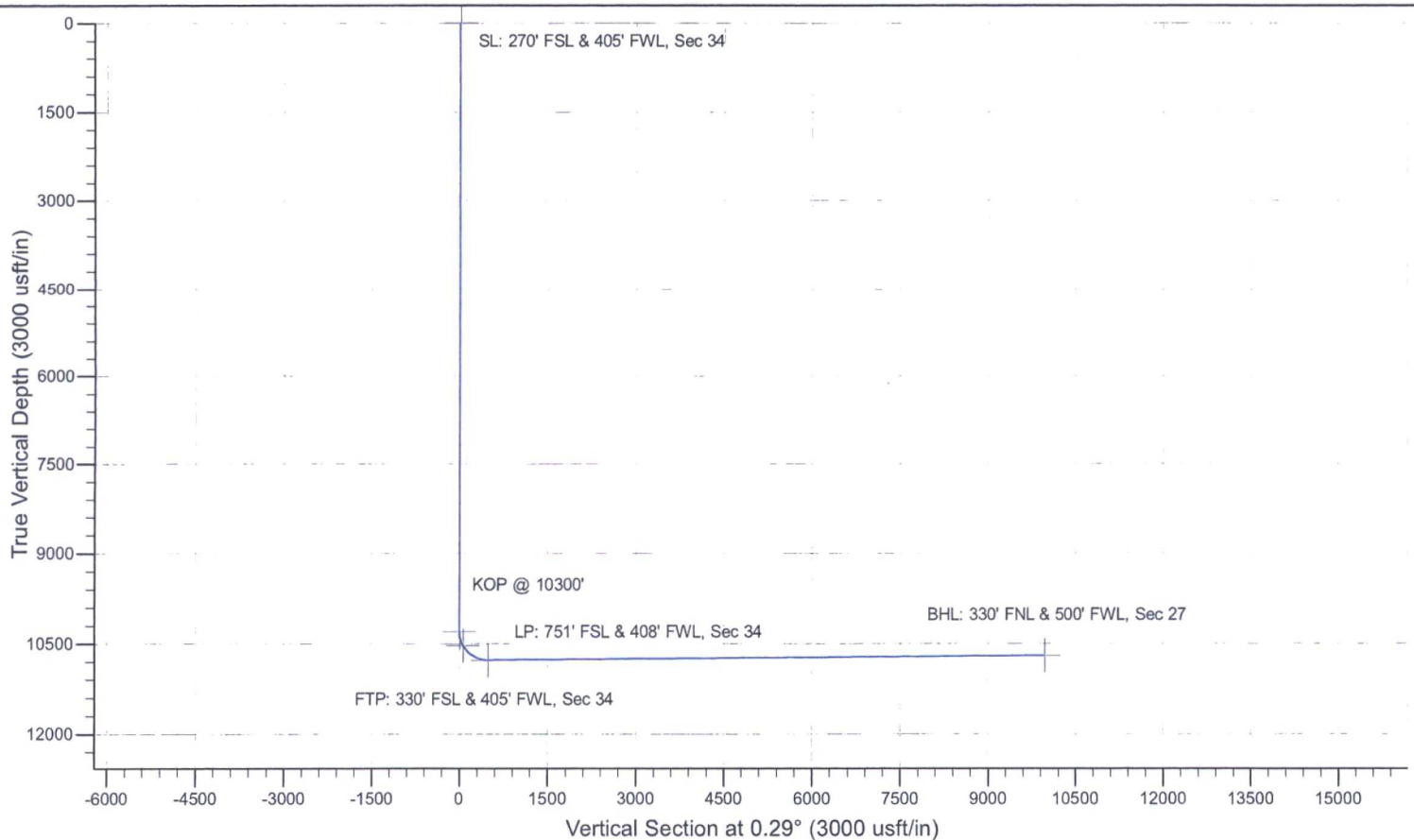
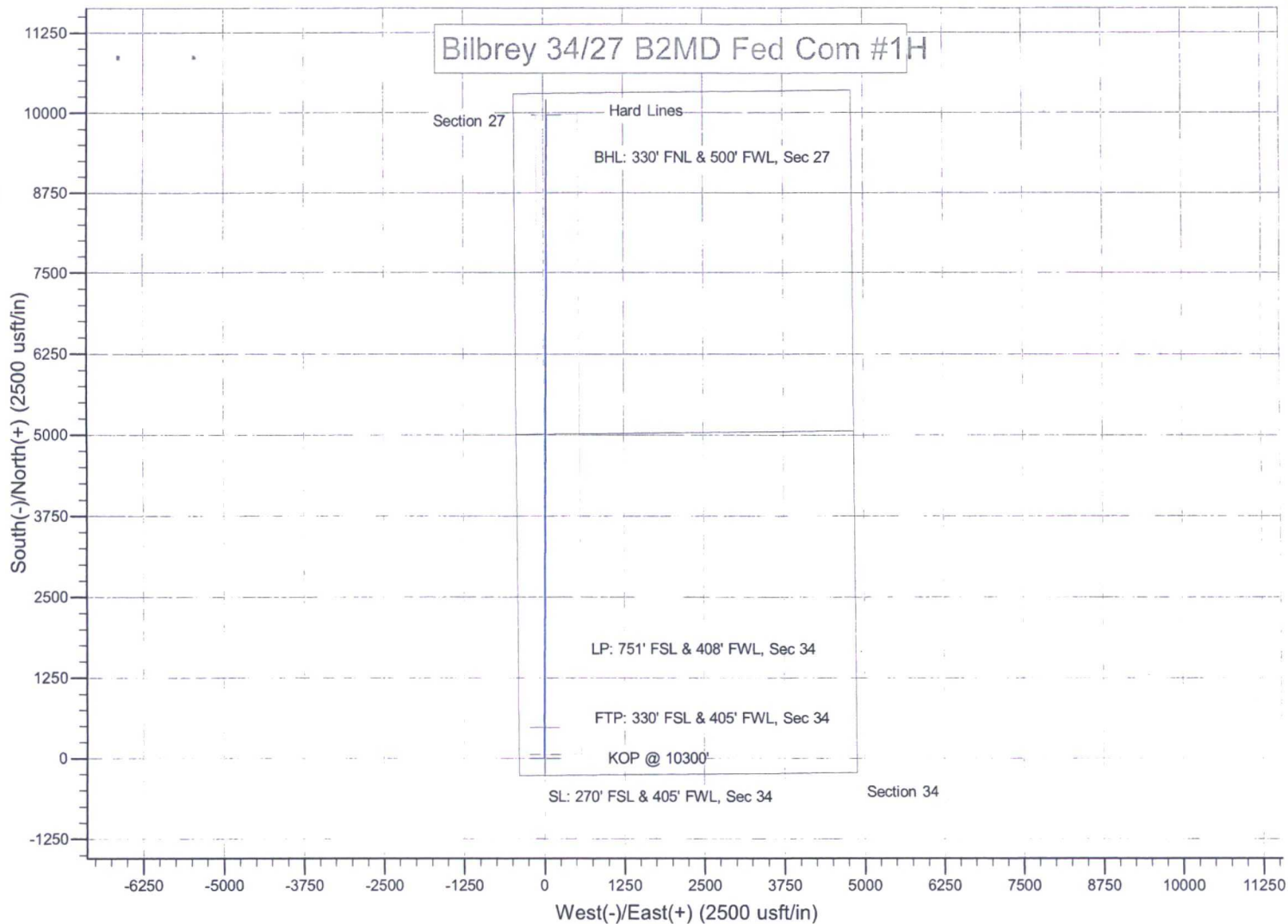
**WTC, INC.**  
405 S.W. 1st. STREET  
ANDREWS, TEXAS 79714  
(432) 523-2181

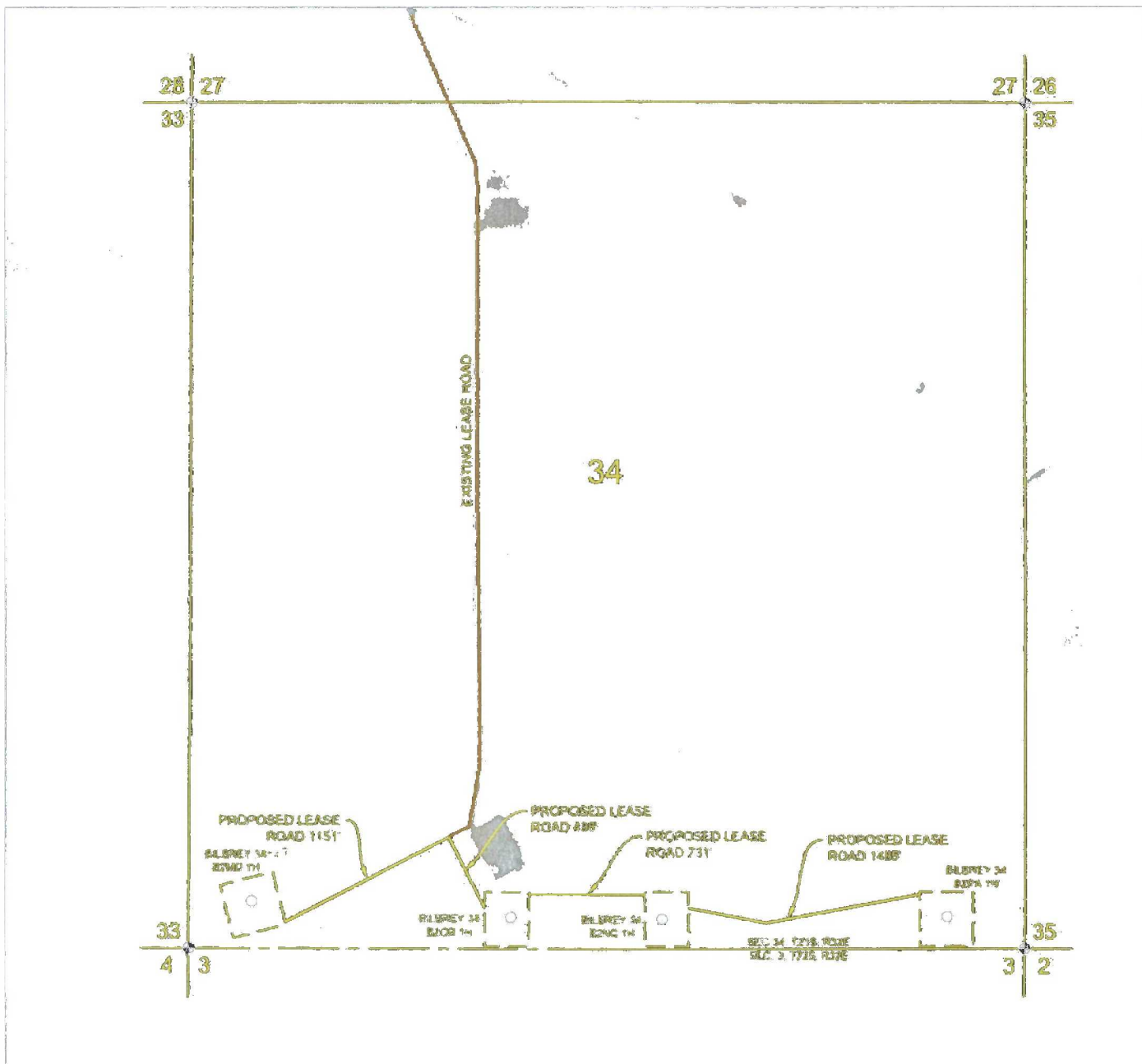


MEWBOURNE OIL COMPANY

JOB No.: WTC49690

# Bilbrey 34/27 B2MD Fed Com #1H





0 50 100 200

GRAPHIC SCALE 1" = 100'

SECTION 34, T 21S, R 32E, N.M.P.M.

COUNTY: LEA STATE: NM

OPERATOR: MEWBOURNE OIL COMPANY

WELL NAME: BILBREY WELLS

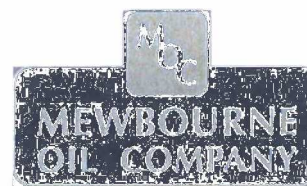
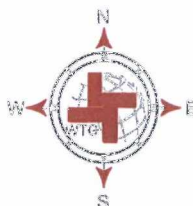
## ACCESS ROAD

### DRIVING DIRECTIONS:

FROM THE INTERSECTION OF HWY 62-180 AND CAMPBELL ROAD, GO SOUTH ON CAMPBELL ROAD 5.8 MILES TURN LEFT ON LEASE ROAD, GO WEST 1 MILE AND TURN RIGHT, GO 1 MILE AND TURN RIGHT, GO 1.1 MILE AND TURN LEFT, GO 1 MILE AND TURN RIGHT, GO 1.6 MILES AND LATHE FOR PROPOSED ROAD IS ON THE WEST CORNER OF EXISTING PAD.



WTC, INC.  
405 S.W. 1st STREET  
ANDREWS, TEXAS 79714  
(432) 523-2181



MEWBOURNE OIL COMPANY

JOB No.: WTC49390



# AERIAL MAP



0 1000 2000 4000

GRAPHIC SCALE 1" = 2000'

SECTION 34, T 21S, R 32E, N.M.P.M.

COUNTY: LEA STATE: NM

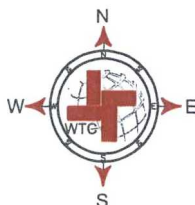
DESCRIPTION: 270' FSL & 405' FWL

OPERATOR: MEWBOURNE OIL COMPANY

WELL NAME: BILBREY 34 B2MD FEDERAL COM-#1H



**WTC, INC.**  
405 S.W. 1st. STREET  
ANDREWS, TEXAS 79714  
(432) 523-2181



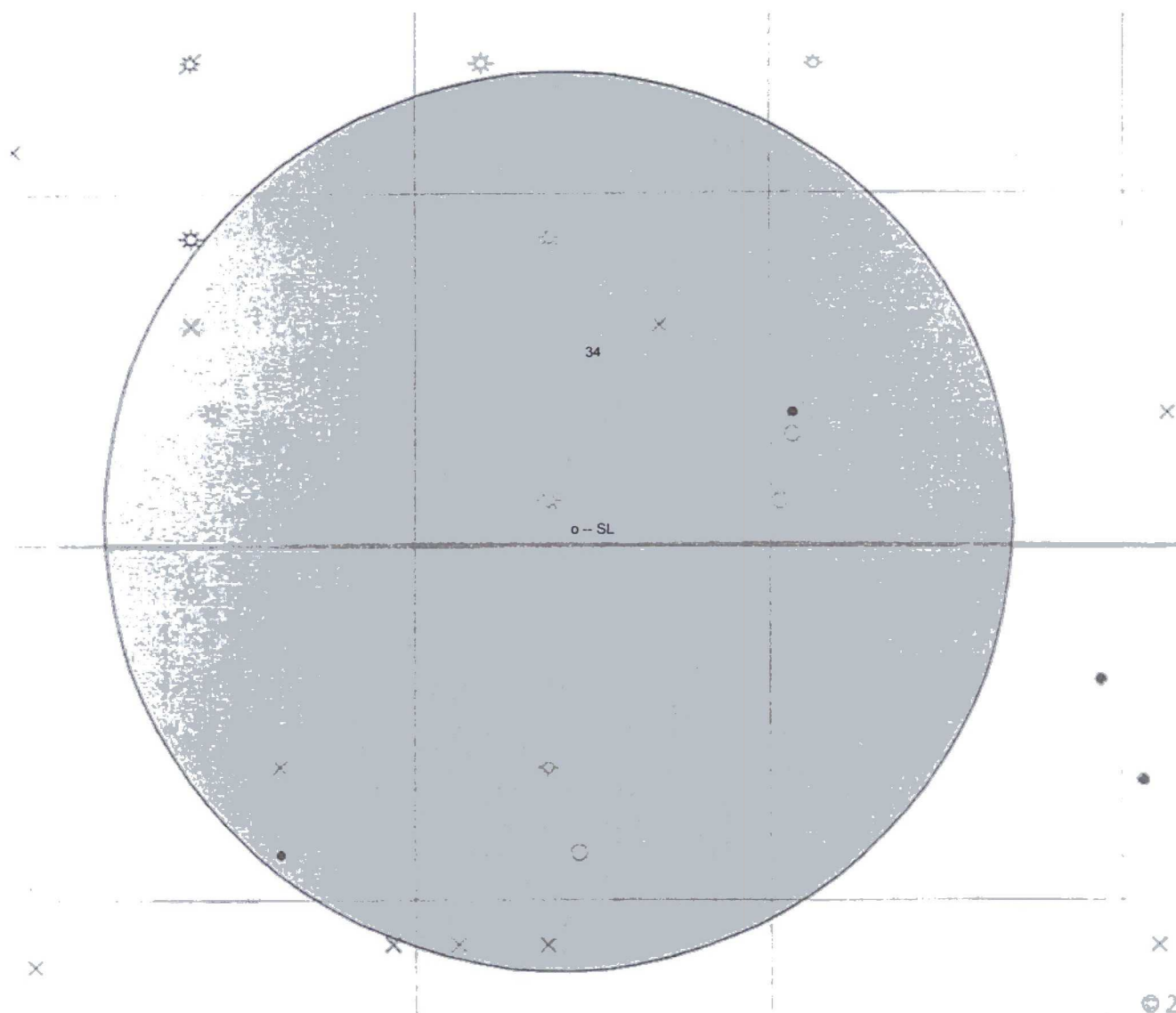
## DRIVING DIRECTIONS:

FROM THE INTERSECTION OF HWY 62-180 AND CAMPBELL ROAD, GO SOUTH ON CAMPBELL ROAD 5.8 MILES TURN LEFT ON LEASE ROAD, GO WEST 1 MILE AND TURN RIGHT, GO 1 MILE AND TURN RIGHT, GO 1.1 MILE AND TURN LEFT, GO 1 MILE AND TURN RIGHT, GO 1.6 MILES AND LATHE FOR PROPOSED ROAD IS ON THE WEST CORNER OF EXISTING PAD.



**MEWBOURNE OIL COMPANY**

JOB No.: WTC49690



- Drilling (Well Start)
- × Abandoned Location (Permit)
- ☆ Gas Well
- Oil Well
- ✱ Oil and Gas Well
- Other (Observation, etc)
- ✱ Injection Well
- ◇ Suspended
- ✱ Plugged Gas Well
- ✱ Plugged Oil Well
- ✱ Plugged Oil and Gas
- ✱ Dry Hole (No Shows)
- ✱ Dry Hole w/Gas Show
- ✱ Dry Hole w/Oil Show
- ✱ Dry Hole w/Oil and Gas Show