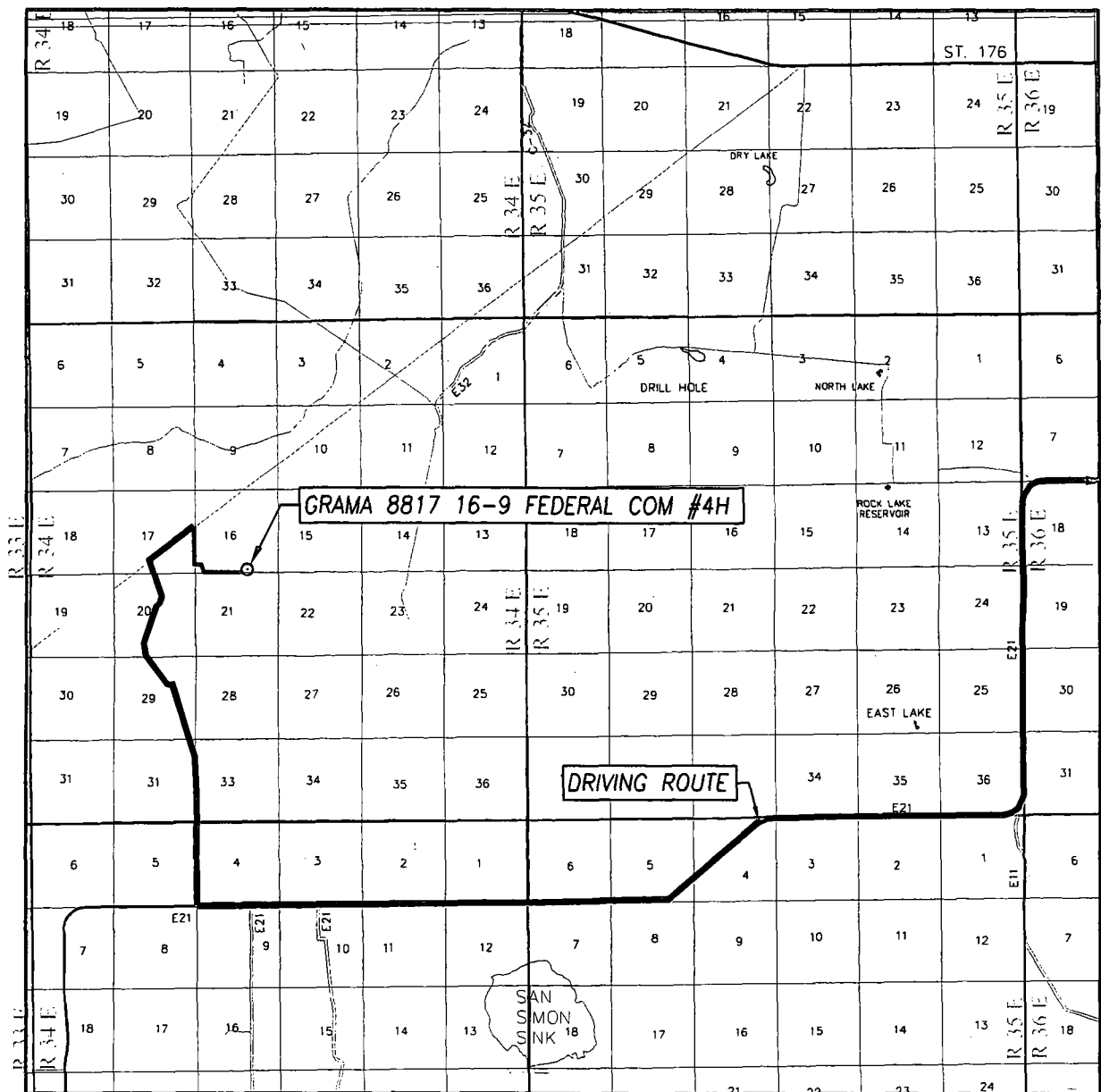


VICINITY MAP



8 MILES TO
ST. HWY.
#207

SCALE: 1" = 2 MILES

DRIVING ROUTE: SEE TOPOGRAPHICAL AND ACCESS ROAD MAP

SEC. 16 TWP. 22-S RGE. 34-E

SURVEY N.M.P.M.


COUNTY LEA STATE NEW MEXICO

DESCRIPTION 200' FSL & 1980' FEL

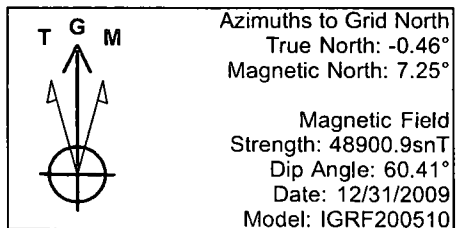
ELEVATION 3476'

OPERATOR BTA OIL PRODUCERS, LLC

LEASE GRAMA 8817 16-9 FEDERAL COM



PROVIDING SURVEYING SERVICES
SINCE 1946
JOHN WEST SURVEYING COMPANY
412 N. DAL PASO HOBBS, N.M. 88240
(575) 393-3117 www.jwsc.biz
TBPLS# 10021000

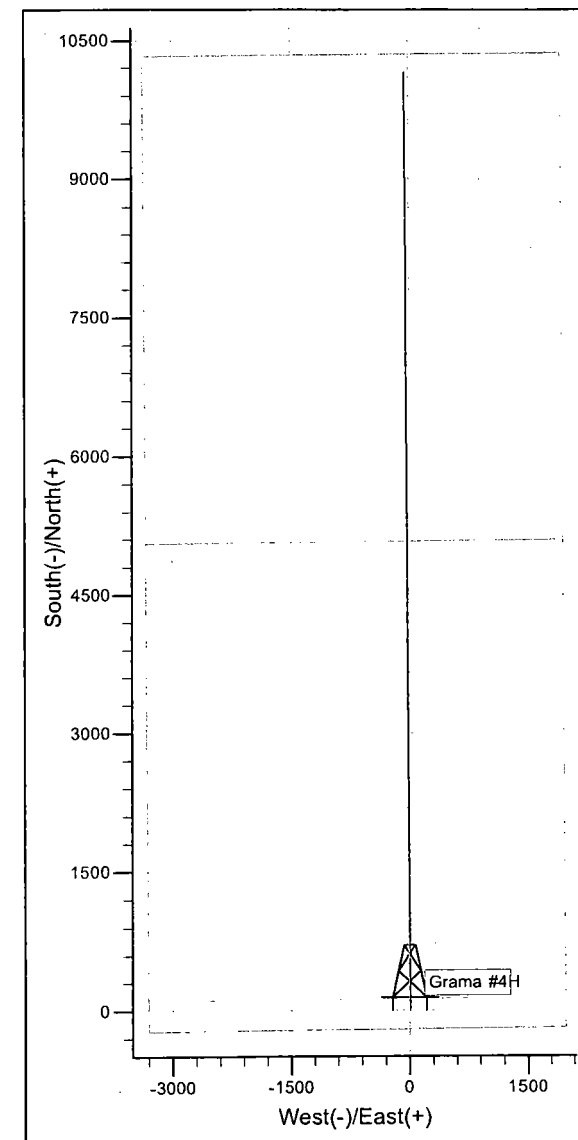
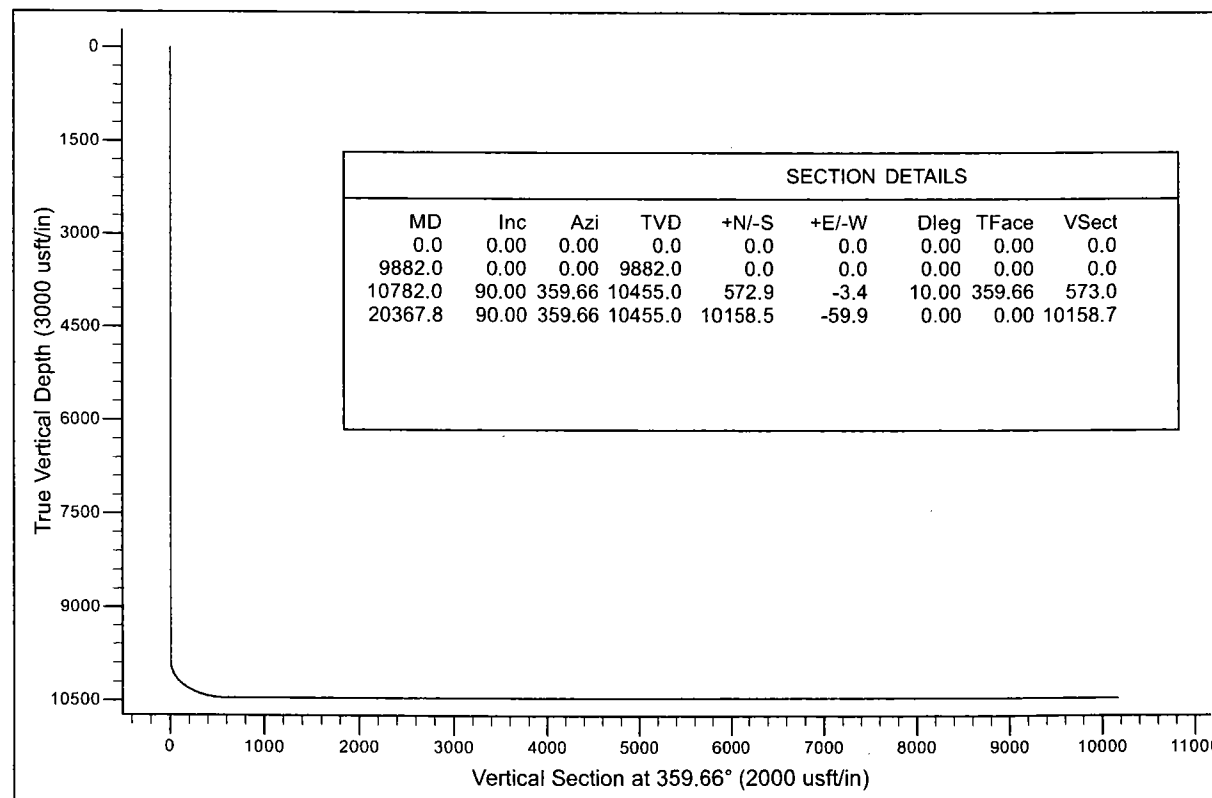


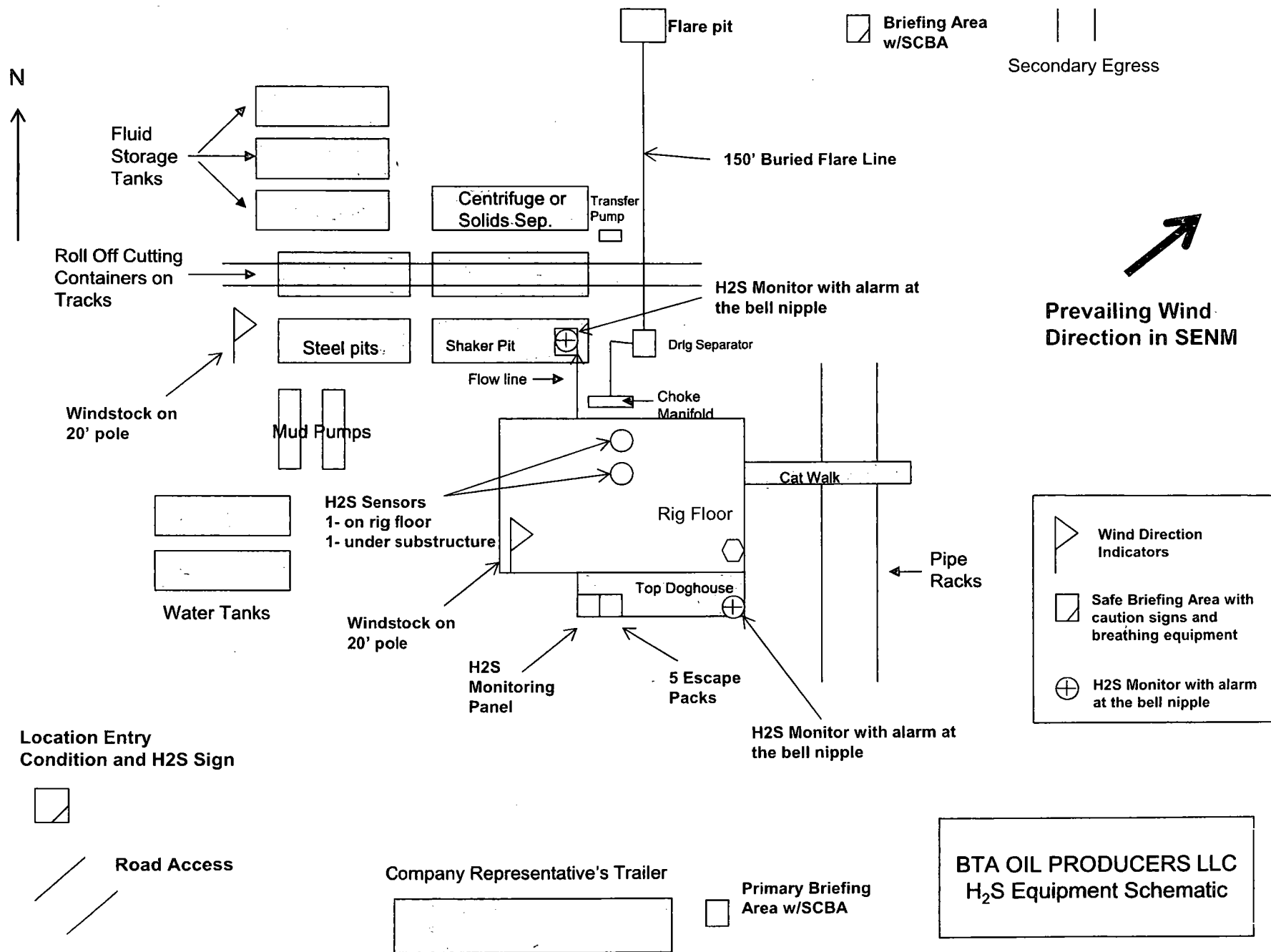
WELL DETAILS: Grama #4H					
+N/-S ~+E/-W		Ground Level:	3476.0		
0.0	0.0	Northing	504805.00	Easting	765786.50
		Latitude	32° 23' 5.580 N	Longitude	
				103° 28' 20.427 W	

SITE DETAILS: Grama	
Site Centre Northing:	504907.50
Easting:	762856.00
Positional Uncertainty:	0.0
Convergence:	0.46
Local North:	Grid

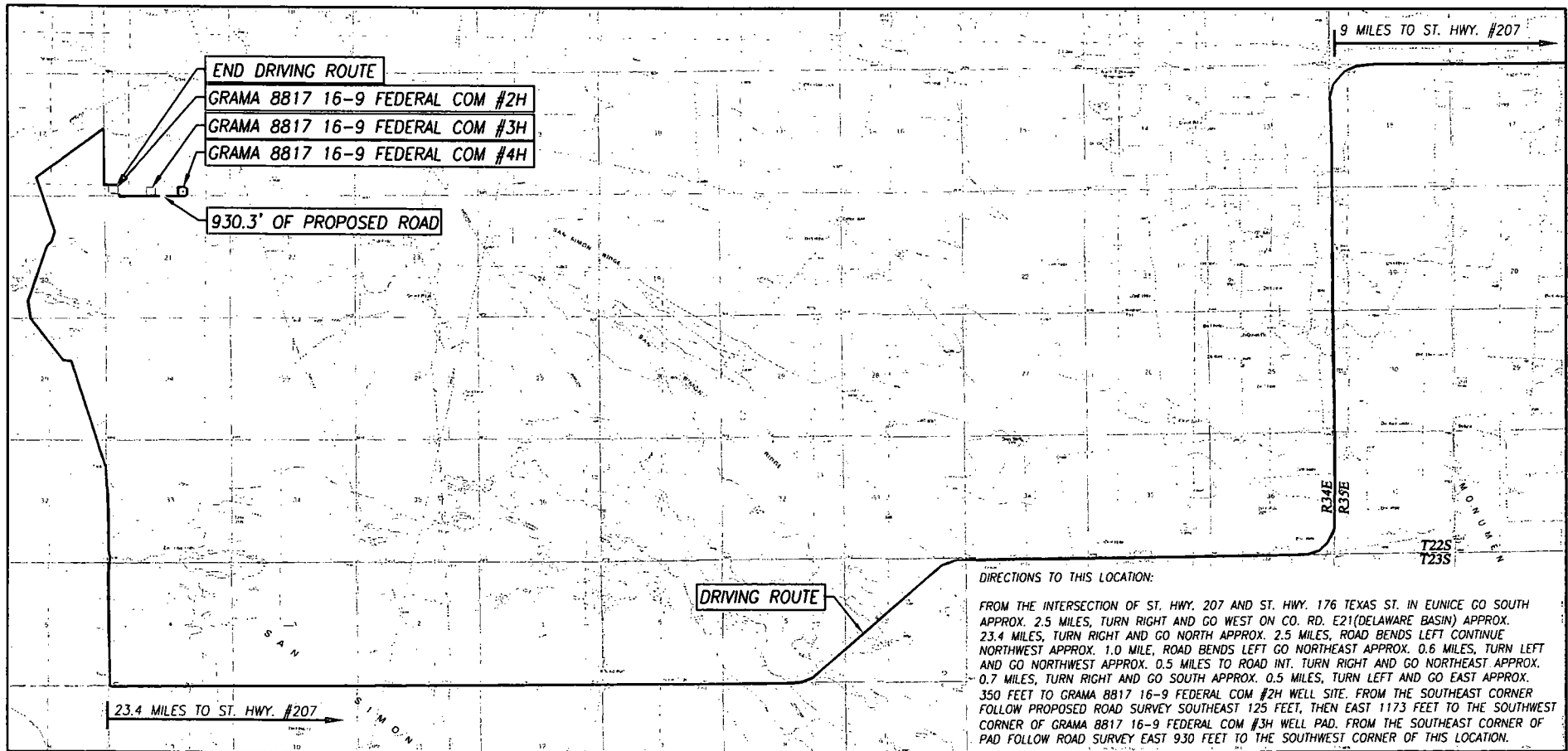
BTA Oil Producers, LLC

PROJECT DETAILS: Lea County, NM	
Geodetic System:	US State Plane 1927 (Exact solution)
Datum:	NAD 1927 (NADCON CONUS)
Ellipsoid:	Clarke 1866
Zone:	New Mexico East 3001
System Datum:	Ground Level





TOPOGRAPHIC AND ACCESS ROAD MAP

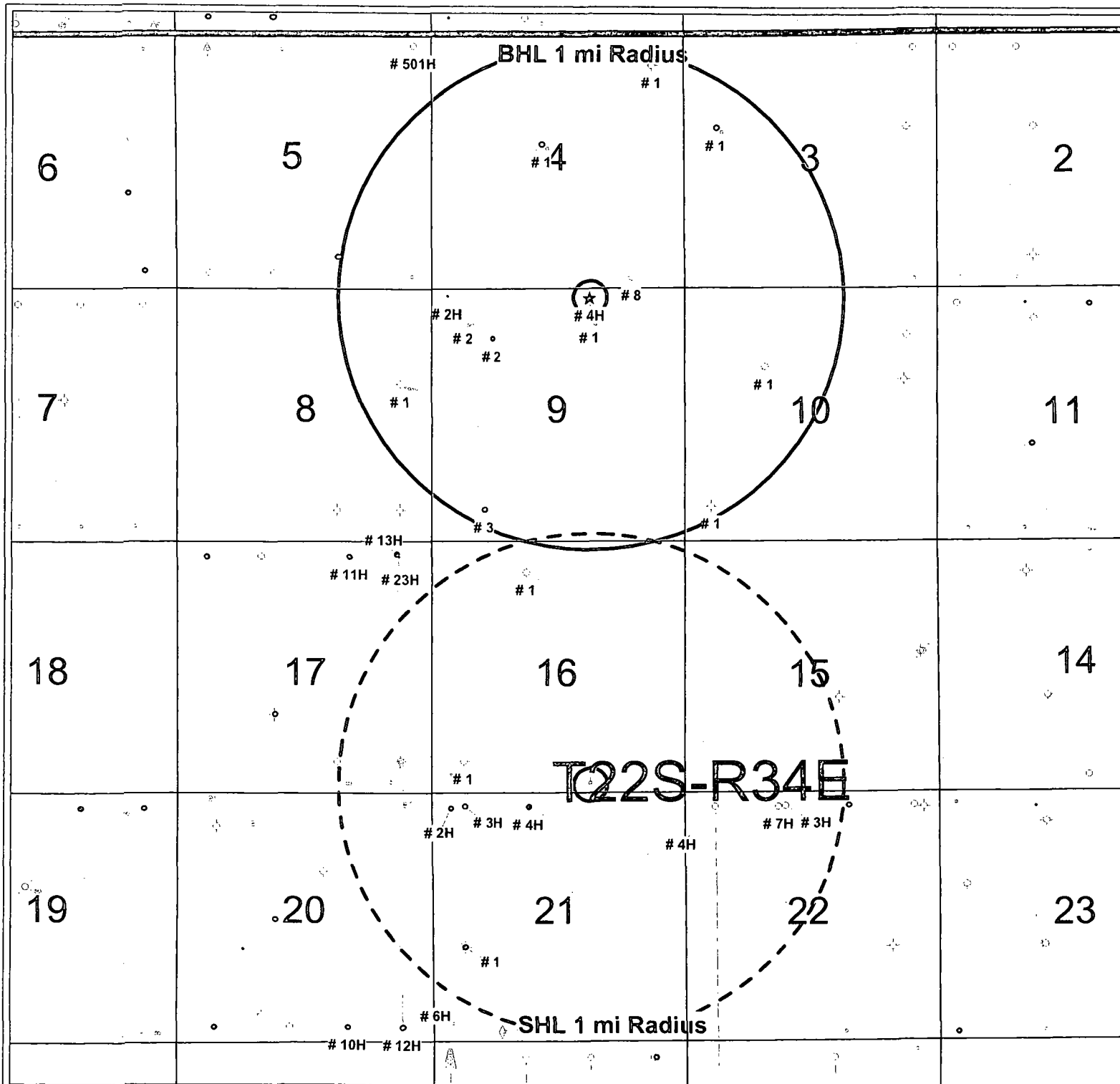


SEC. 16 TWP. 22-S. RGE. 34-E
 COUNTY LEA STATE NEW MEXICO
 DESCRIPTION 200' FSL & 1980' FEL
 ELEVATION 3476'
 OPERATOR BTA OIL PRODUCERS, LLC
 LEASE GRAMA 8817 16-9 FEDERAL COM
 U.S.G.S. TOPOGRAPHIC MAP
 SAN SIMON RANCH, N.M. SURVEY N.M.P.M.

SCALE: 1" = 5280'

CONTOUR INTERVAL:
 SAN SIMON RANCH, N.M. - 10'/ SAN SIMON SINK, N.M. - 10'
 OIL CENTER, N.M. - 10'/ EAST LAKE, N.M. - 10'

PROVIDING SURVEYING SERVICES
 SINCE 1946
JOHN WEST SURVEYING COMPANY
 412 N. DAL PASO HOBBS, N.M. 88240
 (575) 393-3117 www.jwsc.biz
 TBPLS# 10021000



BTA Oil Producers, LLC

Grama 8817 16-9 Fed Com #4H - Radius Map

SHL:200'FSL & 1980'FEL Sec.16, T22S-R34E
BHL:200'FNL & 1980'FEL Sec.9, T22S-R34E

Lea County, New Mexico

WELL SYMBOLS

- ★ Proposed Location
- Location Only
- Drilling Well
- Drilled, Waiting on Completion
- Oil Well
- Gas Well
- Dry Hole
- Plugged & Abandoned Oil Well
- Plugged & Abandoned Gas Well
- Junked
- SO Dry Hole With Oil Show
- SO&G Dry Hole With Oil & Gas Show
- OG Gas Injection Well
- ◇ Pilot Hole

REMARKS

Grama 8817 16-9 Fed Com #4H Highlighted in Yellow
Surface Hole Location 1 Mile Radius in Red Dash
Bottom Hole Location 1 Mile Radius in Red

By: JHB

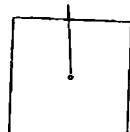
0 2,782 5,564
FEET

October 25, 2016

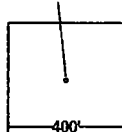
Grama 8817 16-9 Fed Com #4H - 1mi Radius Well Data

UWI (APINum)	Operator	Well Name	Well #	Sec	Twp	Rng	Surf Lat	Surf Lon	Bot Lat	Bot Lon	SHL Ftg Calls	TD	Status
3002521336	ENSTOR GRAMA RIDGE	STATE GRA	1	3	22S	34E	32.4224584	-103.4637179	0	0	1980'FNL & 660'FWL	13257	ACTIVE
3002508471	HUMBLE OIL & REFG CO	FAYE M SAUNDEPERMIT	1	4	22S	34E	32.426077	-103.4679918	0	0	660'FNL & 660'FEL	4140	DRY
3002521334	ENSTOR GRAMA RIDGE	FEDERAL GR-4	1	4	22S	34E	32.4215552	-103.4754644	0	0	2310'FNL & 2310'FWL	14870	ACTIVE
3002539922	ENSTOR GRAMA RIDGE	GRAMA RIDGE MORROW UNIT	8	4	22S	34E	32.4136344	-103.4692613	32.4138764	-103.4694568	126'FSL & 1048'FEL	13460	ACTIVE
3002542957	EOG RESOURCES INC	UPTURN 5 FEDERAL	501H	5	22S	34E	32.4139349	-103.4843909	32.4272247	-103.4841219	250'FSL & 430'FEL		ACTIVE
3002530046	JUDAH OIL	GRAMA RIDGE 8 STATE	1	8	22S	34E	32.4078105	-103.4851633	0	0	1980'FNL & 660'FEL	13570	ACTIVE
3002508475	HUMBLE OIL & REFG CO	SAUNDERS	2	9	22S	34E	32.4114328	-103.4808712	0	0	660'FNL & 660'FWL	4265	DRY
3002530686	ENSTOR GRAMA RIDGE	GRAMA RIDGE FEDERAL 8817 JV-P	1	9	22S	34E	32.4114635	-103.4722874	0	0	660'FNL & 1980'FEL	13350	ACTIVE
3002530884	BTA OIL PRODUCERS, LLC	GRAMA RIDGE FEDERAL	2	9	22S	34E	32.410379	-103.4788895	0	0	1046'FNL & 1273'FWL	13375	INACTIVE
3002535007	BTA OIL PRODUCERS, LLC	8817 JV-P GRAMA RIDGE FED	3	9	22S	34E	32.400554	-103.4794917	0	0	660'FSL & 1100'FWL	13360	INACTIVE
3002508476	HUDSON & HUDSON	MILLER-FEDERAL	1	10	22S	34E	32.40073	-103.46414	0	0	660'FSL & 660'FWL	4310	DRY
3002521719	EOG RESOURCES INC	GOVERNMENT A	1	10	22S	34E	32.4087653	-103.4605344	0	0	1650'FNL & 1650'FWL	13400	INACTIVE
3002530561	BTA OIL PRODUCERS, LLC	GRAMA 8817 JV-P COM	1	16	22S	34E	32.3969234	-103.4766563	0	0	660'FNL & 1980'FWL	13500	ACTIVE
3002534628	BTA OIL PRODUCERS, LLC	8817 JV-P GRAMA C	1	16	22S	34E	32.3860322	-103.4809786	0	0	660'FSL & 660'FWL	13391	ACTIVE
3002543426	BTA OIL PRODUCERS, LLC	GRAMA 8817 JV-P FED COM	2H	16	22S	34E	32.385229	-103.48183	32.4128148	-103.4819657	330'FSL & 380'FWL	20168	ACTIVE
	BTA OIL PRODUCERS, LLC	GRAMA 8817 16-9 FED COM	4H	16	22S	34E	32.3847761	-103.4723844	32.4127278	-103.4722834	200'FSL & 1980'FEL		REC-LOC
3002534789	DEVON ENERGY PROD	GAUCHO UNIT	6H	17	22S	34E	32.3860418	-103.4852543	32.3706288	-103.4850267	660'FSL & 660'FEL	16716	ACTIVE
3002541183	DEVON ENERGY PROD	GAUCHO UNIT	10H	17	22S	34E	32.3847973	-103.4888874	32.3706474	-103.4888287	200'FSL & 1780'FEL	16126	ACTIVE
3002541184	DEVON ENERGY PROD	GAUCHO UNIT	11H	17	22S	34E	32.3847964	-103.4887255	32.3978561	-103.4888038	200'FSL & 1730'FEL	16010	ACTIVE
3002542814	DEVON ENERGY PROD	GAUCHO UNIT	23H	17	22S	34E	32.3848499	-103.4859394	32.3978445	-103.4853586	225'FSL & 870'FEL	15832	ACTIVE
3002541564	DEVON ENERGY PROD	GAUCHO UNIT	12H	20	22S	34E	32.3834704	-103.4849811	32.3706018	-103.4852111	275'FNL & 575'FEL	14916	ACTIVE
3002541565	DEVON ENERGY PROD	GAUCHO UNIT	13H	20	22S	34E	32.3836078	-103.4849821	32.3979786	-103.4854513	225'FNL & 575'FEL	15378	ACTIVE
3002534266	DEVON ENERGY PROD	GAUCHO 21 FEDERAL	1	21	22S	34E	32.3752543	-103.4809198	0	0	1980'FSL & 660'FWL	13450	ACTIVE
3002540626	DEVON ENERGY PROD	GAUCHO 21 FEDERAL	2H	21	22S	34E	32.3708429	-103.4818102	32.3832931	-103.4818675	375'FSL & 375'FWL	12600	ACTIVE
3002542136	DEVON ENERGY PROD	GAUCHO 21 FEDERAL	3H	21	22S	34E	32.370362	-103.478325	32.3834112	-103.4809202	200'FSL & 1450'FWL	14917	ACTIVE
3002542137	DEVON ENERGY PROD	GAUCHO 21 FEDERAL	4H	21	22S	34E	32.370362	-103.4781631	32.3833835	-103.4766301	200'FSL & 1500'FWL	14890	ACTIVE
3002543164	COG OPERATING LLC	SQUINTS FEDERAL COM	4H	27	22S	34E	32.3557847	-103.4637599	32.3833807	-103.4639516	190'FSL & 660'FWL		ACTIVE
3002543166	COG OPERATING LLC	SQUINTS FEDERAL COM	3H	27	22S	34E	32.355819	-103.459593	32.383421	-103.45919	190'FSL & 1980'FWL		ACTIVE
3002543167	COG OPERATING LLC	SQUINTS FEDERAL COM	7H	27	22S	34E	32.3557692	-103.4593884	32.3833701	-103.4596767	190'FSL & 2010'FWL		ACTIVE

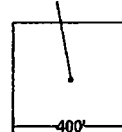
GRAMA 8817 16-9 FED COM #2H
CENTRAL TANK BATTERY
NAD 83 NME
LAT.=32.385353°
LONG.=103.482312°



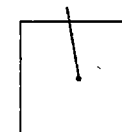
GRAMA 8817 16-9 FED COM #3H
NAD 83 NME
LAT.=32.385007°
LONG.=103.477130°



GRAMA 8817 16-9 FED COM #4H
NAD 83 NME
LAT.=32.385007°
LONG.=103.472821°



GRAMA 8817 16-9 FED COM #5H
NAD 83 NME
LAT.=32.384996°
LONG.=103.467478°



1298.3'

400'

930.3'

400'

1249.11'

BTA OIL PRODUCERS, LLC

**GRAMA 8817 16-9 FED COM LEASE
PROPOSED FLOWLINE PLAT**

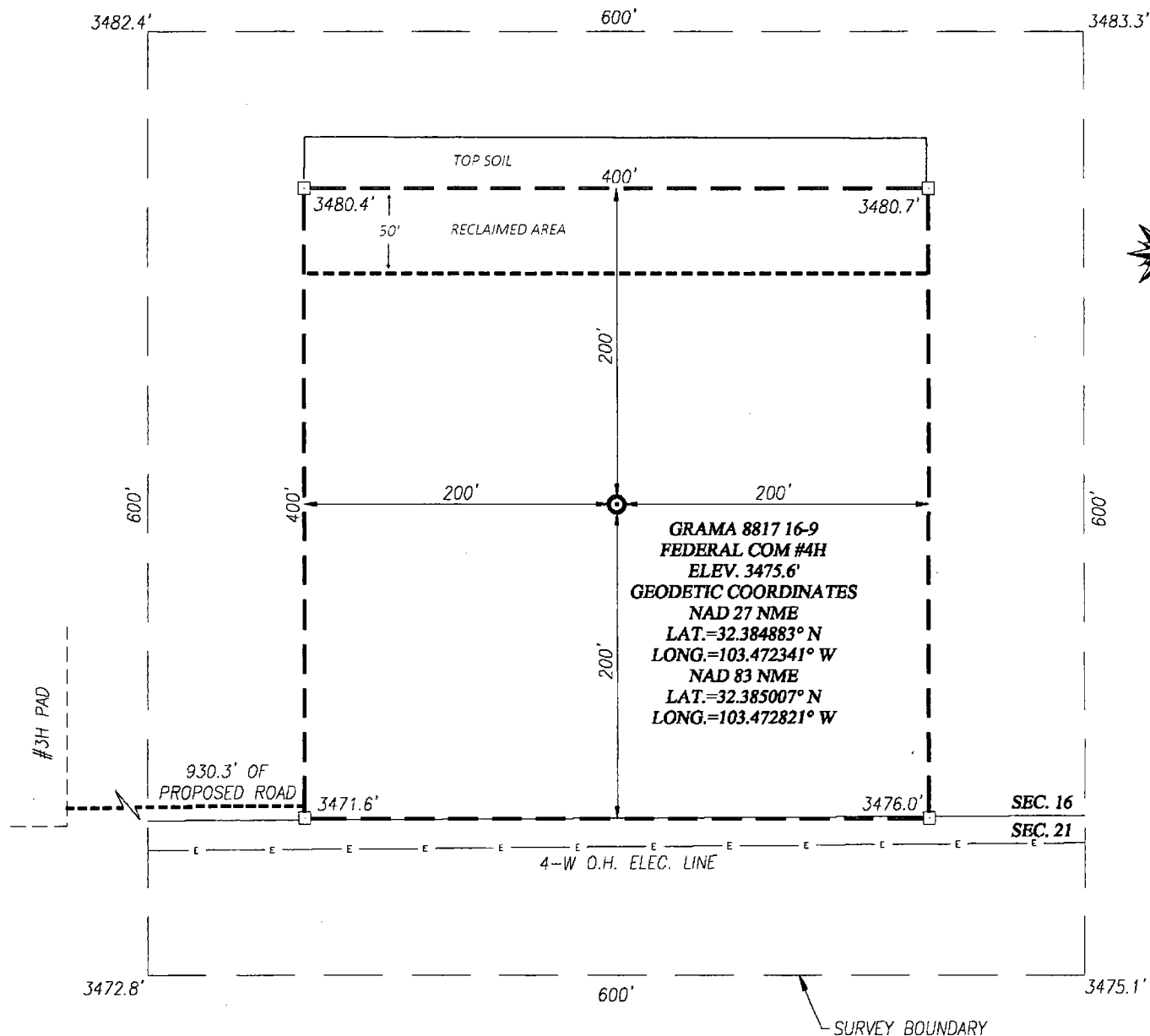
**SECTION 16, T22S, R34E
LEA COUNTY, NEW MEXICO**

BTA OIL PRODUCERS, LLC
WATER SOURCE AND TRANSPORTATION MAP
GRAMA 8817 16-9 FED COM #4H
SECTION 16, T22S-R34E



Penwell Energy
WR 00878

WELL SITE PLAN

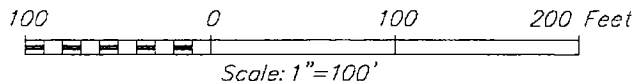


DIRECTIONS TO THIS LOCATION:

FROM THE INTERSECTION OF ST. HWY. 207 AND ST. HWY. 176 TEXAS ST. IN EUNICE GO SOUTH APPROX. 2.5 MILES, TURN RIGHT AND GO WEST ON CO. RD. E21(DELAWARE BASIN) APPROX. 23.4 MILES, TURN RIGHT AND GO NORTH APPROX. 2.5 MILES, ROAD BENDS LEFT CONTINUE NORTHWEST APPROX. 1.0 MILE, ROAD BENDS LEFT GO NORTHEAST APPROX. 0.6 MILES, TURN LEFT AND GO NORTHWEST APPROX. 0.5 MILES TO ROAD INT. TURN RIGHT AND GO NORTHEAST APPROX. 0.7 MILES, TURN RIGHT AND GO SOUTH APPROX. 0.5 MILES, TURN LEFT AND GO EAST APPROX. 350 FEET TO GRAMA 8817 16-9 FEDERAL COM #2H WELL SITE. FROM THE SOUTHEAST CORNER FOLLOW PROPOSED ROAD SURVEY SOUTHEAST 125 FEET, THEN EAST 1173 FEET TO THE SOUTHWEST CORNER OF GRAMA 8817 16-9 FEDERAL COM #3H WELL PAD. FROM THE SOUTHEAST CORNER OF PAD FOLLOW ROAD SURVEY EAST 930 FEET TO THE SOUTHWEST CORNER OF THIS LOCATION.

NOTE:

SEE "TOPOGRAPHICAL AND ACCESS ROAD MAP" FOR PROPOSED ROAD LOCATION.



BTA OIL PRODUCERS, LLC

GRAMA 8817 16-9 FEDERAL COM #4H WELL LOCATED 200 FEET FROM THE SOUTH LINE AND 1980 FEET FROM THE EAST LINE OF SECTION 16, TOWNSHIP 22 SOUTH, RANGE 34 EAST, N.M.P.M., LEA COUNTY, NEW MEXICO



PROVIDING SURVEYING SERVICES
SINCE 1946
JOHN WEST SURVEYING COMPANY
412 N. DAL PASO HOBBS, N.M. 88240
(575) 393-3117 www.jwsc.biz
TBPLS# 10021000

Survey Date: 9/26/16	CAD Date: 10/11/16	Drawn By: ACK
W.O. No.: 16110713	Rev. :	Rel. W.O.:
		Sheet 1 of 1



U.S. Department of the Interior
BUREAU OF LAND MANAGEMENT

PWD Data Report

06/07/2017

Section 1 - General

Would you like to address long-term produced water disposal? NO

Section 2 - Lined Pits

Would you like to utilize Lined Pit PWD options? NO

Produced Water Disposal (PWD) Location:

PWD surface owner:

PWD disturbance (acres):

Lined pit PWD on or off channel:

Lined pit PWD discharge volume (bbl/day):

Lined pit specifications:

Pit liner description:

Pit liner manufacturers information:

Precipitated solids disposal:

Describe precipitated solids disposal:

Precipitated solids disposal permit:

Lined pit precipitated solids disposal schedule:

Lined pit precipitated solids disposal schedule attachment:

Lined pit reclamation description:

Lined pit reclamation attachment:

Leak detection system description:

Leak detection system attachment:

Lined pit Monitor description:

Lined pit Monitor attachment:

Lined pit: do you have a reclamation bond for the pit?

Is the reclamation bond a rider under the BLM bond?

Lined pit bond number:

Lined pit bond amount:

Additional bond information attachment:

Section 3 - Unlined Pits

Would you like to utilize Unlined Pit PWD options? NO

Produced Water Disposal (PWD) Location:

PWD surface owner:

PWD disturbance (acres):

Unlined pit PWD on or off channel:

Unlined pit PWD discharge volume (bbl/day):

Unlined pit specifications:

Precipitated solids disposal:

Describe precipitated solids disposal:

Precipitated solids disposal permit:

Unlined pit precipitated solids disposal schedule:

Unlined pit precipitated solids disposal schedule attachment:

Unlined pit reclamation description:

Unlined pit reclamation attachment:

Unlined pit Monitor description:

Unlined pit Monitor attachment:

Do you propose to put the produced water to beneficial use?

Beneficial use user confirmation:

Estimated depth of the shallowest aquifer (feet):

Does the produced water have an annual average Total Dissolved Solids (TDS) concentration equal to or less than that of the existing water to be protected?

TDS lab results:

Geologic and hydrologic evidence:

State authorization:

Unlined Produced Water Pit Estimated percolation:

Unlined pit: do you have a reclamation bond for the pit?

Is the reclamation bond a rider under the BLM bond?

Unlined pit bond number:

Unlined pit bond amount:

Additional bond information attachment:

Section 4 - Injection

Would you like to utilize Injection PWD options? NO

Produced Water Disposal (PWD) Location:

PWD surface owner:

PWD disturbance (acres):

Injection PWD discharge volume (bbl/day):

Injection well mineral owner:

Injection well type:

Injection well number:

Injection well name:

Assigned injection well API number?

Injection well API number:

Injection well new surface disturbance (acres):

Minerals protection information:

Mineral protection attachment:

Underground Injection Control (UIC) Permit?

UIC Permit attachment:

Section 5 - Surface Discharge

Would you like to utilize Surface Discharge PWD options? NO

Produced Water Disposal (PWD) Location:

PWD surface owner:

PWD disturbance (acres):

Surface discharge PWD discharge volume (bbl/day):

Surface Discharge NPDES Permit?

Surface Discharge NPDES Permit attachment:

Surface Discharge site facilities information:

Surface discharge site facilities map:

Section 6 - Other

Would you like to utilize Other PWD options? NO

Produced Water Disposal (PWD) Location:

PWD surface owner:

PWD disturbance (acres):

Other PWD discharge volume (bbl/day):

Other PWD type description:

Other PWD type attachment:

Have other regulatory requirements been met?

Other regulatory requirements attachment:



U.S. Department of the Interior
BUREAU OF LAND MANAGEMENT

Bond Info Data Report

06/07/2017

Bond Information

Federal/Indian APD: FED

BLM Bond number: NMB000849

BIA Bond number:

Do you have a reclamation bond? NO

Is the reclamation bond a rider under the BLM bond?

Is the reclamation bond BLM or Forest Service?

BLM reclamation bond number:

Forest Service reclamation bond number:

Forest Service reclamation bond attachment:

Reclamation bond number:

Reclamation bond amount:

Reclamation bond rider amount:

Additional reclamation bond information attachment: