

District I
1625 N French Dr., Hobbs, NM 88240
Phone (575) 393-6161 Fax (575) 393-0720
District II
811 S First St., Artesia, NM 88210
Phone (575) 748-1283 Fax (575) 748-9720
District III
1000 Rio Brazos Road, Aztec, NM 87410
Phone (505) 334-6178 Fax (505) 334-6170
District IV
1220 S. St. Francis Dr., Sante Fe, NM 87505
Phone (505) 476-3460 Fax (505) 476-3462

State of New Mexico
Energy, Minerals & Natural Resources
Department
OIL CONSERVATION DIVISION
1220 South St. Francis Dr.
Sante Fe, NM 87505

s/s

FORM C-102
Revised August 1, 2011
Submit one copy to appropriate
District Office

AMENDED REPORT

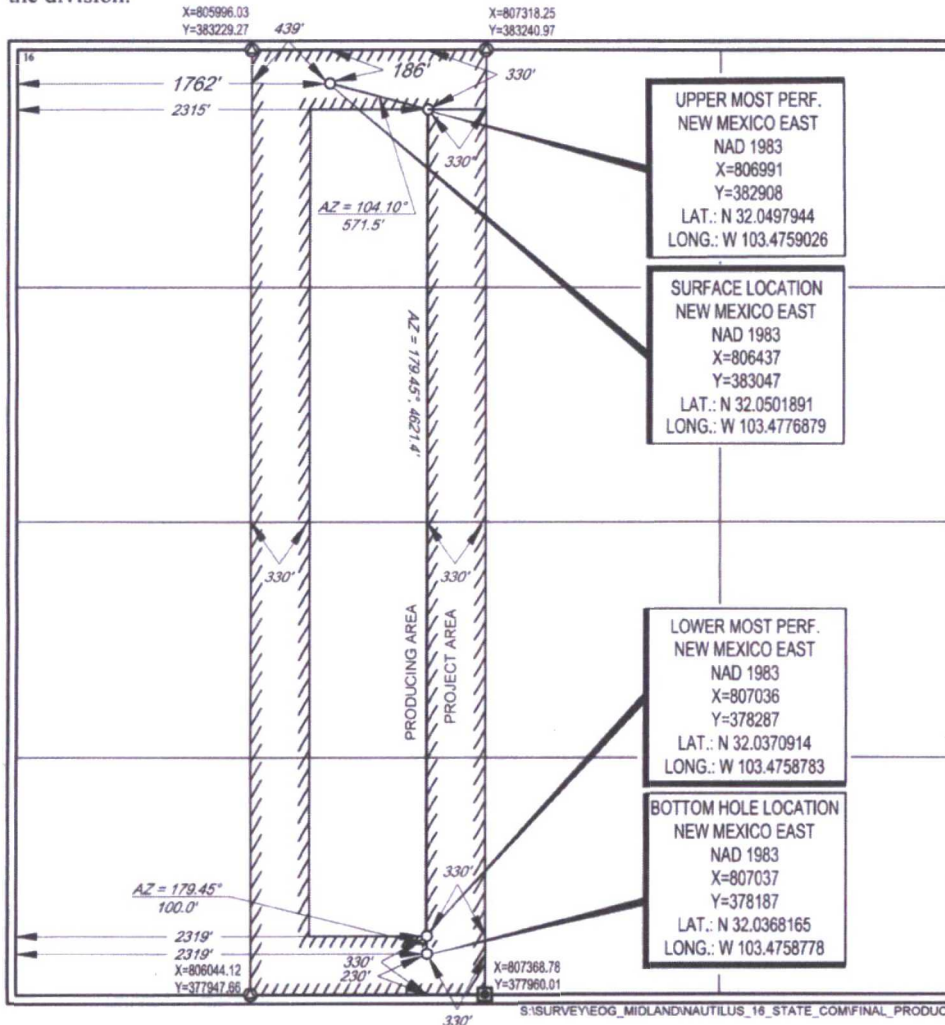
WELL LOCATION AND ACREAGE DEDICATION PLAT

¹ API Number 30-025-4 43900	² Pool Code 98105	³ Pool Name WC-025 G-09 S263416B; Upper Wolfcamp
⁴ Property Code 40383	⁵ Property Name NAUTILUS 16 STATE COM	
⁷ OGRID No. 7377	⁸ Operator Name EOG RESOURCES, INC.	
		⁶ Well Number #711H
		⁹ Elevation 3330'

RECEIVED
 JUN 20 2017
 HOBBS OGD

10 Surface Location									
UL or lot no.	Section	Township	Range	Lot Idn	Feet from the	North/South line	Feet from the	East/West line	County
C	16	26-S	34-E	-	186'	NORTH	1762'	WEST	LEA
N	16	26-S	34-E	-	230'	SOUTH	2319'	WEST	LEA
¹¹ Dedicated Acres 160.00		¹² Joint or Infill		¹³ Consolidation Code		¹⁵ Order No.			

No allowable will be assigned to this completion until all interests have been consolidated or a non-standard unit has been approved by the division.



UPPER MOST PERF.
NEW MEXICO EAST
NAD 1983
X=806991
Y=382908
LAT.: N 32.0497944
LONG.: W 103.4759026

SURFACE LOCATION
NEW MEXICO EAST
NAD 1983
X=806437
Y=383047
LAT.: N 32.0501891
LONG.: W 103.4776879

LOWER MOST PERF.
NEW MEXICO EAST
NAD 1983
X=807036
Y=378287
LAT.: N 32.0370914
LONG.: W 103.4758783

BOTTOM HOLE LOCATION
NEW MEXICO EAST
NAD 1983
X=807037
Y=378187
LAT.: N 32.0368165
LONG.: W 103.4758778

17 OPERATOR CERTIFICATION

I hereby certify that the information contained herein is true and complete to the best of my knowledge and belief, and that this organization either owns a working interest or released mineral interest in the land including the proposed bottom hole location or has a right to drill this well at this location pursuant to a contract with an owner of such a mineral or working interest, or to a voluntary pooling agreement or a compulsory pooling order heretofore entered by the division.

Stan Wagner 7/20/17
Signature Date

Stan Wagner
Printed Name

E-mail Address

18 SURVEYOR CERTIFICATION

I hereby certify that the well location shown on this plat was plotted from field notes of actual surveys made by me or under my supervision, and that the same is true to the best of my belief.

07/20/2017
Date of Survey
Signature and Seal of Professional Surveyor

M. CHAPMAN BROWN
NEW MEXICO
18329
PROFESSIONAL SURVEYOR

Certificate Number