

0
0
2

HOBBS OCD
Energy
JUL 26 2017
OIL
RECEIVED

FORM C-102
Revised August 1, 2011
Submit one copy to appropriate
District Office

WELL LOCATION AND ACREAGE DEDICATION PLAT

¹⁰Surface Location

¹² Dedicated Acres 240.00	¹³ Joint or Infill	¹⁴ Consolidation Code	¹⁵ Order No.
---	-------------------------------	----------------------------------	-------------------------

**BOTTOM HOLE LOCATION
NEW MEXICO EAST**

NAD 1927	X=751365	Y=541229
LAT.: N 32.4853098	LONG.: W 103.5181547	
MD = 19369'		

**LOWER MOST PERFORATION
NEW MEXICO EAST**

NAD 1927	X=751366	Y=541117
LAT.: N 32.4850024	LONG.: W 103.5181529	
MD = 19258'		

**UPPER MOST PERFORATION
NEW MEXICO EAST**

NAD 1927	X=751380	Y=534047
LAT.: N 32.4655695	LONG.: W 103.5182839	
MD = 12186'		

**SURFACE HOLE LOCATION
NEW MEXICO EAST**

NAD 1927		NAD 1983	
X=751292	Y=533779	X=792474	Y=533840
LAT.: N 32.4648337		LAT.: N 32.4649573	
LONG.: W 103.5185746		LONG.: W 103.5190597	

Well Path Data:

- Surface Hole to Lower Most Perforation: Distance = 2394', Azimuth = 359.55°
- Lower Most Perforation to Bottom Hole: Distance = 2371', Azimuth = 330°
- Surface Hole to Bottom Hole: Distance = 247', Azimuth = 330°
- Bottom Hole to Surface Hole: Distance = 247', Azimuth = 330°

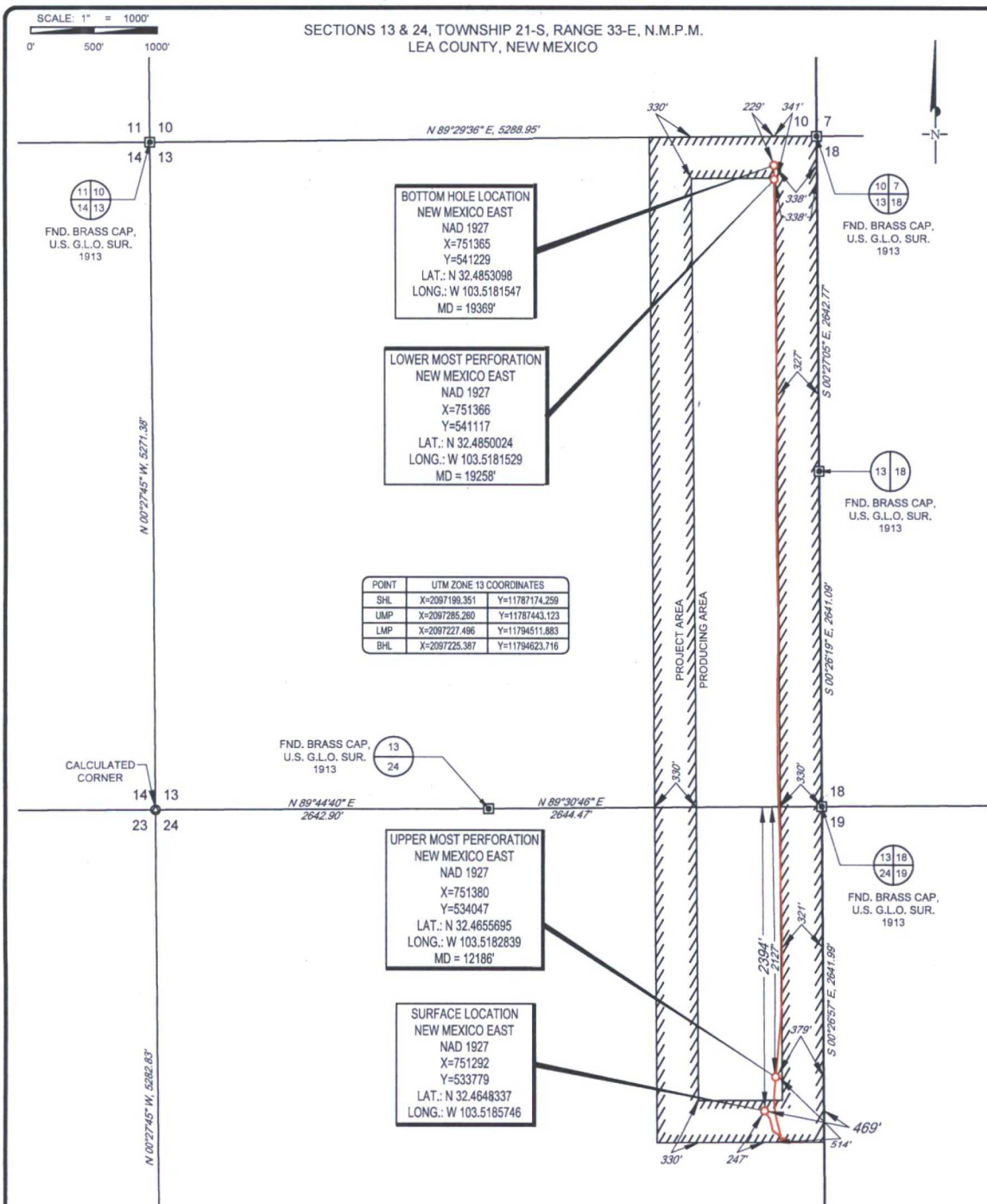
Producing Area Coordinates:

- Point 1: X=751701.11, Y=541460.90
- Point 2: X=751721.93, Y=538818.22
- Point 3: X=751742.16, Y=538177.20
- Point 4: X=751762.87, Y=533535.29

Map Labels:

- PROJECT AREA
- PRODUCING AREA
- Distances: 229', 338', 330', 2394', 2371', 247', 469', 161.9'
- Azimuths: 359.55°, 330°, 58.64°

Certificate Number



LEASE NAME & WELL NO.: NERVOSA STATE COM #601H

SECTION 24 TWP 21-S RGE 33-E SURVEY N.M.P.M.

COUNTY LEA STATE NM ELEVATION 3764'

DESCRIPTION 2394' FNL & 469' FEL

TOPOGRAPHIC
LOYALTY INNOVATION LEGACY

1400 EVERMAN PARKWAY, Ste. 197 • FT. WORTH, TEXAS 76140
TELEPHONE: (817) 744-7512 • FAX: (817) 744-7546
2603 NORTH BIG SPRING • MIDLAND, TEXAS 79705
TELEPHONE: (432) 682-1653 OR (800) 767-1653 • FAX: (432) 682-1743
WWW.TOPOGRAPHIC.COM

eoog resources, Inc.

MICHAEL B. BROWN
NEW MEXICO
18329
PROFESSIONAL SURVEYOR

Michael Blake Brown, P.S. No. 18329
JULY 19, 2017

NERVOSA STATE COM #601H AS-COMPLETED	REVISION:
DATE: 07/19/17	
FILE: AD_NERVOSA_STATE_COM_601H	
DRAWN BY: A.M.D.	
SHEET: 1 OF 1	

NOTES:

1. ORIGINAL DOCUMENT SIZE: 8.5" X 11"
2. ALL BEARINGS, DISTANCES, AND COORDINATE VALUES CONTAINED HEREIN ARE GRID BASED UPON THE NEW MEXICO STATE PLANE COORDINATE SYSTEM, EAST ZONE, U.S. SURVEY FEET, NORTH AMERICAN DATUM 1927.
3. THIS WELL LOCATION SHOWN HEREON HAS BEEN SURVEYED ON THE GROUND UNDER MY SUPERVISION AND PREPARED ACCORDING TO THE EVIDENCE FOUND AT THE TIME OF SURVEY, AND DATA PROVIDED BY EOG RESOURCES, INC. THIS CERTIFICATION IS MADE AND LIMITED TO THOSE PERSONS OR ENTITIES SHOWN ON THE FACE OF THIS PLAT AND IS NON-TRANSFERABLE. THIS SURVEY IS CERTIFIED FOR THIS TRANSACTION ONLY.