

Exhibit "I"

HOBBS OCD
AUG 11 2017
RECEIVED

Form C-102

Revised August 1, 2011

Submit one copy to appropriate
District Office☐ AMENDED REPORT

District I
 1625 N. French Dr., Hobbs, NM 88240
 Phone: (505) 393-6161 Fax: (505) 393-0720
 District II
 811 S. First St., Artesia, NM 88210
 Phone: (505) 748-1283 Fax: (505) 748-9720
 District III
 1000 Rio Brazos Road, Aztec, NM 87410
 Phone: (505) 334-6178 Fax: (505) 334-6170
 District IV
 1220 S. St. Francis Dr., Santa Fe, NM 87505
 Phone: (505) 476-3460 Fax: (505) 476-3462

State of New Mexico
 Energy, Minerals & Natural Resources Department
OIL CONSERVATION DIVISION
 1220 South St. Francis Dr.
 Santa Fe, NM 87505

WELL LOCATION AND ACREAGE DEDICATION PLAT

API Number 30-025-43909	Pool Code 97929	Pool Name WC-025 G-06 S2/3326D Bone Spring
Property Code 40156	Property Name MERCHANT STATE UNIT	Well Number 503H
OGRID No. 000785	Operator Name AMTEX ENERGY, INC.	Elevation 3680.1'

Surface Location

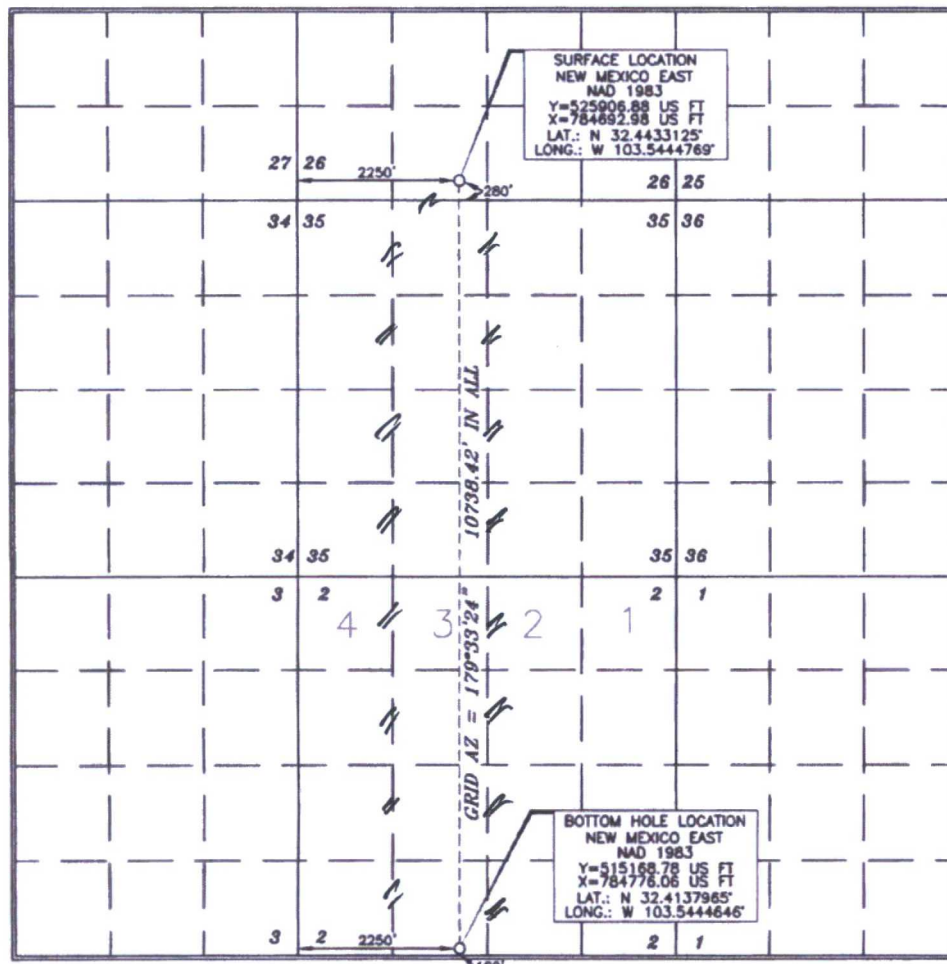
UL or lot no.	Section	Township	Range	Lot Idn	Feet from the	North/South line	Feet from the	East/West line	County
N	26	21 SOUTH	33 EAST, N.M.P.M.		280'	SOUTH	2250'	WEST	LEA

Bottom Hole Location If Different From Surface

UL or lot no.	Section	Township	Range	Lot Idn	Feet from the	North/South line	Feet from the	East/West line	County
N	2	22 SOUTH	33 EAST, N.M.P.M.		100'	SOUTH	2250'	WEST	LEA

Dedicated Acres 320.03	Joint or Infill	Consolidation Code	Order No.
----------------------------------	-----------------	--------------------	-----------

No allowable will be assigned to this completion until all interests have been consolidated or a non-standard unit has been approved by the division.



OPERATOR CERTIFICATION

I hereby certify that the information contained herein is true and complete to the best of my knowledge and belief, and that this organization either owns a working interest or undivided mineral interest in the land including the proposed bottom hole location or has a right to drill this well at this location pursuant to a contract with an owner of such a mineral or working interest, or to a voluntary pooling agreement or a compulsory pooling order heretofore entered by the division.

William J. Savage 07-25-17
 Signature Date

William J. Savage
 Printed Name
bsavage@amtenergy.com
 E-mail Address

SURVEYOR CERTIFICATION

I hereby certify that the well location shown on this plat was plotted from field notes of actual surveys made by me or under my supervision, and that the same is true and correct to the best of my belief.

Tony J. Asch
 Date of Survey
 Signature and Seal of Professional Surveyor

Tony J. Asch 7/2/2017
 Certificate Number 15079

WO# 170714WL-a (KA)