

District I
1625 N. French Dr., Hobbs, NM 88240
Phone: (575) 393-6161 Fax: (575) 393-0720
District II
811 S. First St., Artesia, NM 88210
Phone: (575) 748-1283 Fax: (575) 748-9720
District III
1000 Rio Brazos Road, Aztec, NM 87410
Phone: (505) 334-6178 Fax: (505) 334-6170
District IV
1220 S. St. Francis Dr., Santa Fe, NM 87505
Phone: (505) 476-3460 Fax: (505) 476-3462

State of New Mexico
Energy, Minerals & Natural Resources Department
OIL CONSERVATION DIVISION
1220 South St. Francis Dr.
Santa Fe, NM 87505

Form C-102
Revised August 1, 2011
Submit one copy to appropriate
District Office

☐ AMENDED REPORT

WELL LOCATION AND ACREAGE DEDICATION PLAT

1 API Number 43528 30-025-42662		2 Pool Code 97003		3 Pool Name SWD: Cherry Canyon	
4 Property Code 317365		5 Property Name TELE DELUX 32 STATE SWD			6 Well Number 1
7 OGRID No. 229137		8 Operator Name COG OPERATING, LLC			9 Elevation 3225.9

" Surface Location

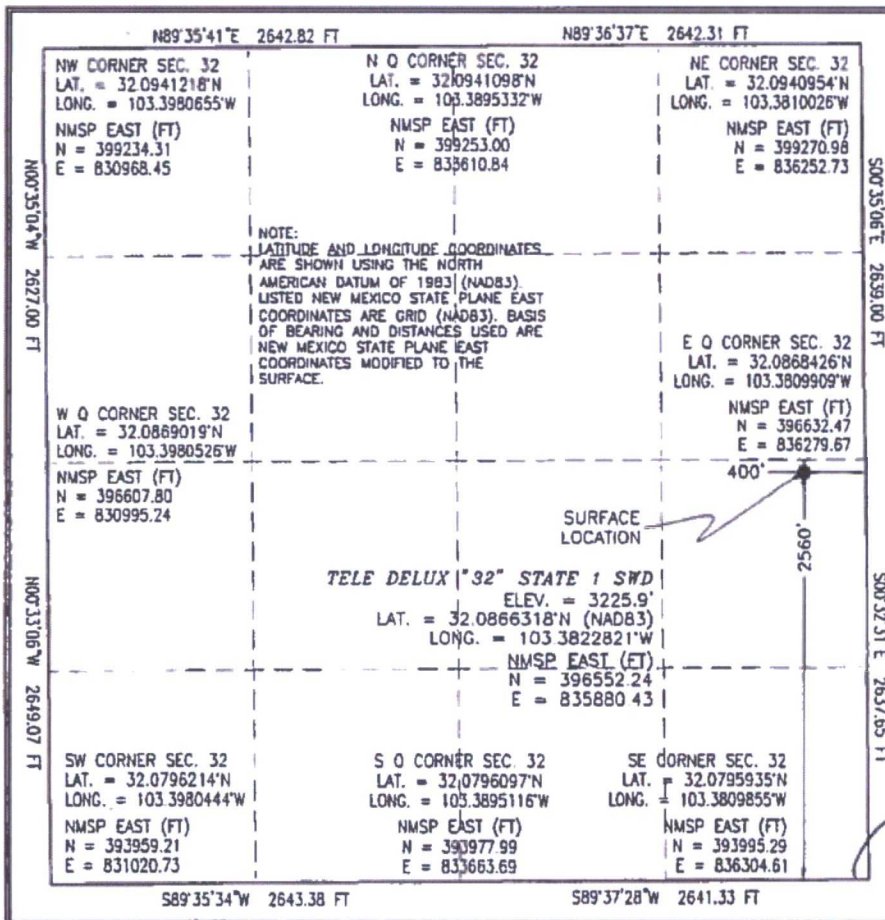
UL or lot no.	Section	Township	Range	Lot Idn	Feet from the	North/South line	Feet from the	East/West line	County
I	32	25 S	35 E		2560	SOUTH	400	EAST	LEA

" Bottom Hole Location If Different From Surface

UL or lot no.	Section	Township	Range	Lot Idn	Feet from the	North/South line	Feet from the	East/West line	County

10 Dedicated Acres	11 Joint or Infill	12 Consolidation Code	13 Order No.
--------------------	--------------------	-----------------------	--------------

No allowable will be assigned to this completion until all interests have been consolidated or a non-standard unit has been approved by the division.



" OPERATOR CERTIFICATION

I hereby certify that the information contained herein is true and complete in the best of my knowledge and belief, and that this organization either owns a working interest or undivided mineral interest in the land including the proposed bottom hole location or has a right to drill this well at this location pursuant to a contract with an owner of such a mineral or working interest, or in a voluntary pooling agreement or a compulsory pooling order heretofore entered by the division.

Signature **Mayte Reyes** Date **8-16-17**

Printed Name **Mayte Reyes**
E-mail Address **mreyes1@concho.com**

14 SURVEYOR CERTIFICATION

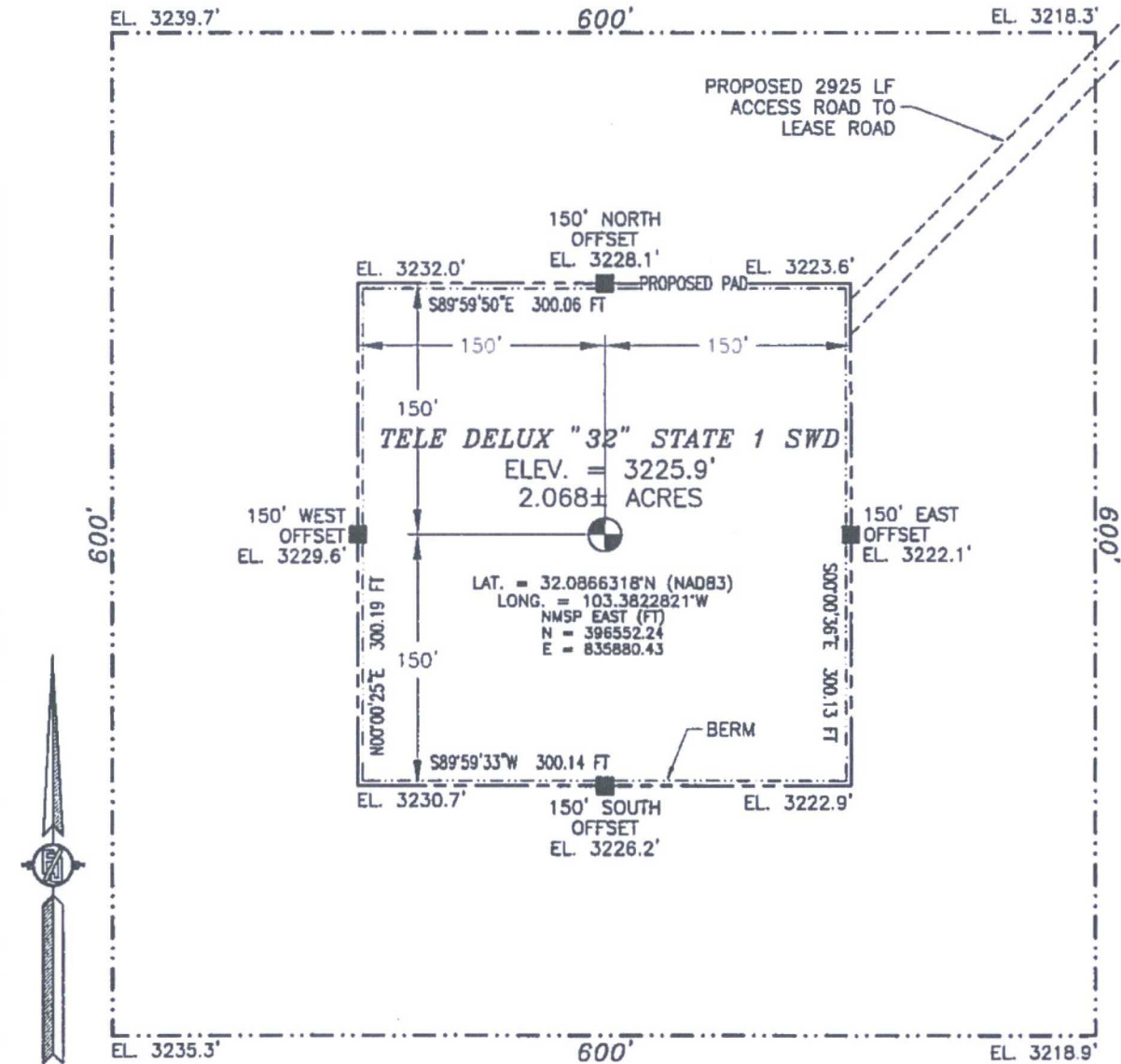
I hereby certify that the well location shown on this plat was plotted from field notes of actual surveys made by me or under my supervision, and that the same is true and correct to the best of my belief.

AUGUST 1, 2017
Date of Survey

Signature and Seal of Professional Surveyor
Certificate Number **12797**
SURVEY NO. 3872A

SECTION 32, TOWNSHIP 25 SOUTH, RANGE 35 EAST, N.M.P.M.
LEA COUNTY, STATE OF NEW MEXICO
SITE MAP

NOTE: LATITUDE AND LONGITUDE COORDINATES ARE SHOWN USING THE NORTH AMERICAN DATUM OF 1983 (NAD83). LISTED NEW MEXICO STATE PLANE EAST COORDINATES ARE GRID (NAD83). BASIS OF BEARING AND DISTANCES USED ARE NEW MEXICO STATE PLANE EAST COORDINATES MODIFIED TO THE SURFACE



0 10 50 100 200

SCALE 1" = 100'

DIRECTIONS TO LOCATION

FROM STATE HIGHWAY 128 AND CR 2 (BATTLE AXE) GO EAST ON STATE HIGHWAY 0.2 OF A MILE. TURN RIGHT (SOUTH) ON LEASE ROAD GO SOUTH 4.2 MILES TO A "Y" INTERSECTION. TURN LEFT (SOUTHEAST) ON LEASE ROAD GO APPROX. 1.2 MILES. ROAD BENDS RIGHT (SOUTH). FOLLOW LEASE ROAD GO SOUTH 0.7 OF A MILE. TURN LEFT (EAST) GO EAST APPROX. 0.9 OF A MILE. TURN RIGHT (SOUTH) GO SOUTH APPROX. 0.8 OF A MILE. ROAD TURNS RIGHT (WEST) IS A ROAD LATH WITH RED & WHITE FLAGGING ON LEFT SIDE (SOUTH) OF ROAD. FOLLOW ROAD LATHS SOUTH & SOUTHWEST APPROX 2925' TO THE NORTHEAST PAD CORNER FOR THIS LOCATION.

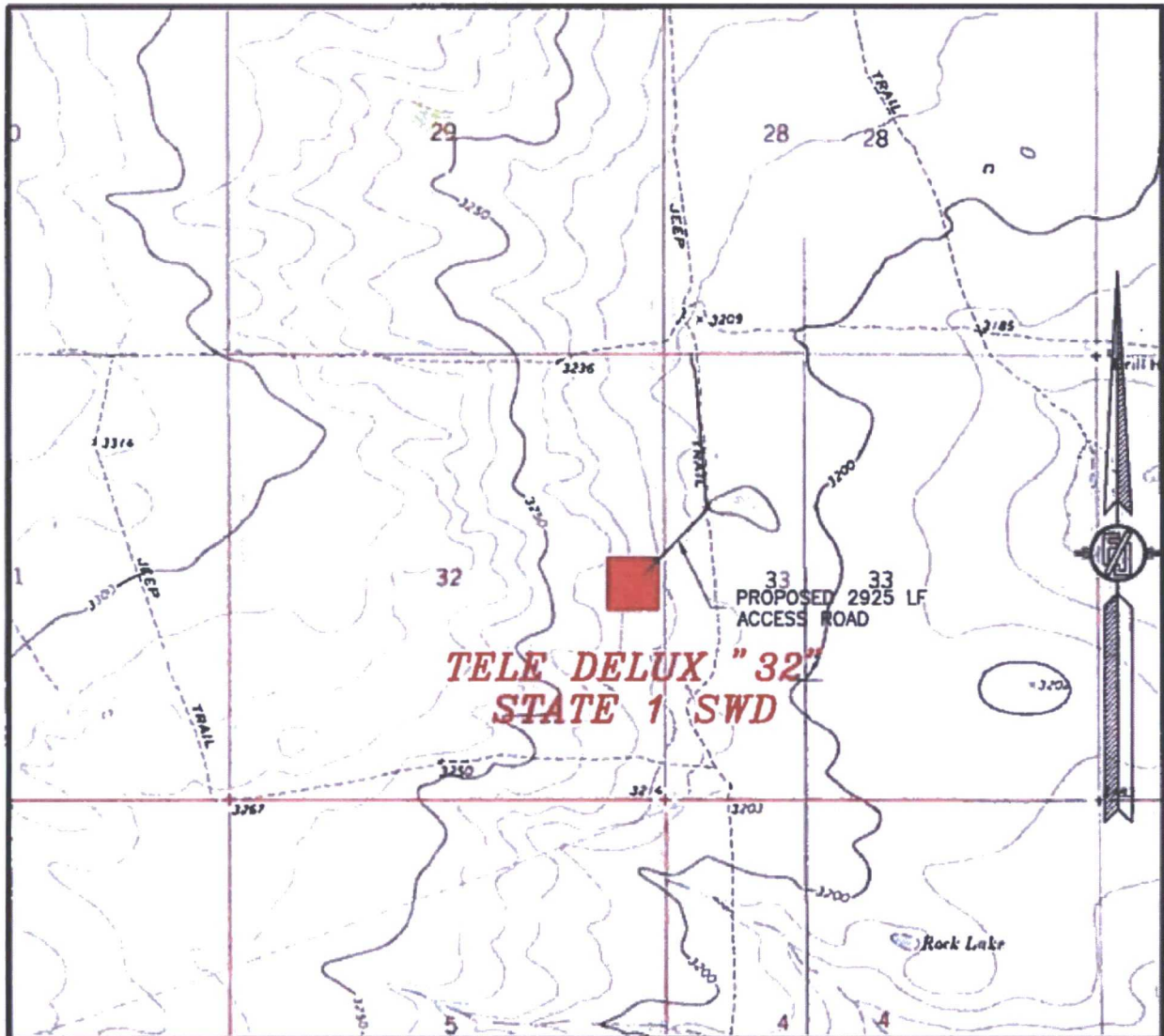
COG OPERATING, LLC
TELE DELUX "32" STATE 1 SWD
LOCATED 2560 FT. FROM THE SOUTH LINE
AND 400 FT. FROM THE EAST LINE OF
SECTION 32, TOWNSHIP 25 SOUTH,
RANGE 35 EAST, N.M.P.M.
LEA COUNTY, STATE OF NEW MEXICO

AUGUST 11, 2017

SURVEY NO. 3872A

MADRON SURVEYING, INC. 301 SOUTH CANAL (575) 234-3341 CARLSBAD, NEW MEXICO

SECTION 32, TOWNSHIP 25 SOUTH, RANGE 35 EAST, N.M.P.M.
LEA COUNTY, STATE OF NEW MEXICO
LOCATION VERIFICATION MAP

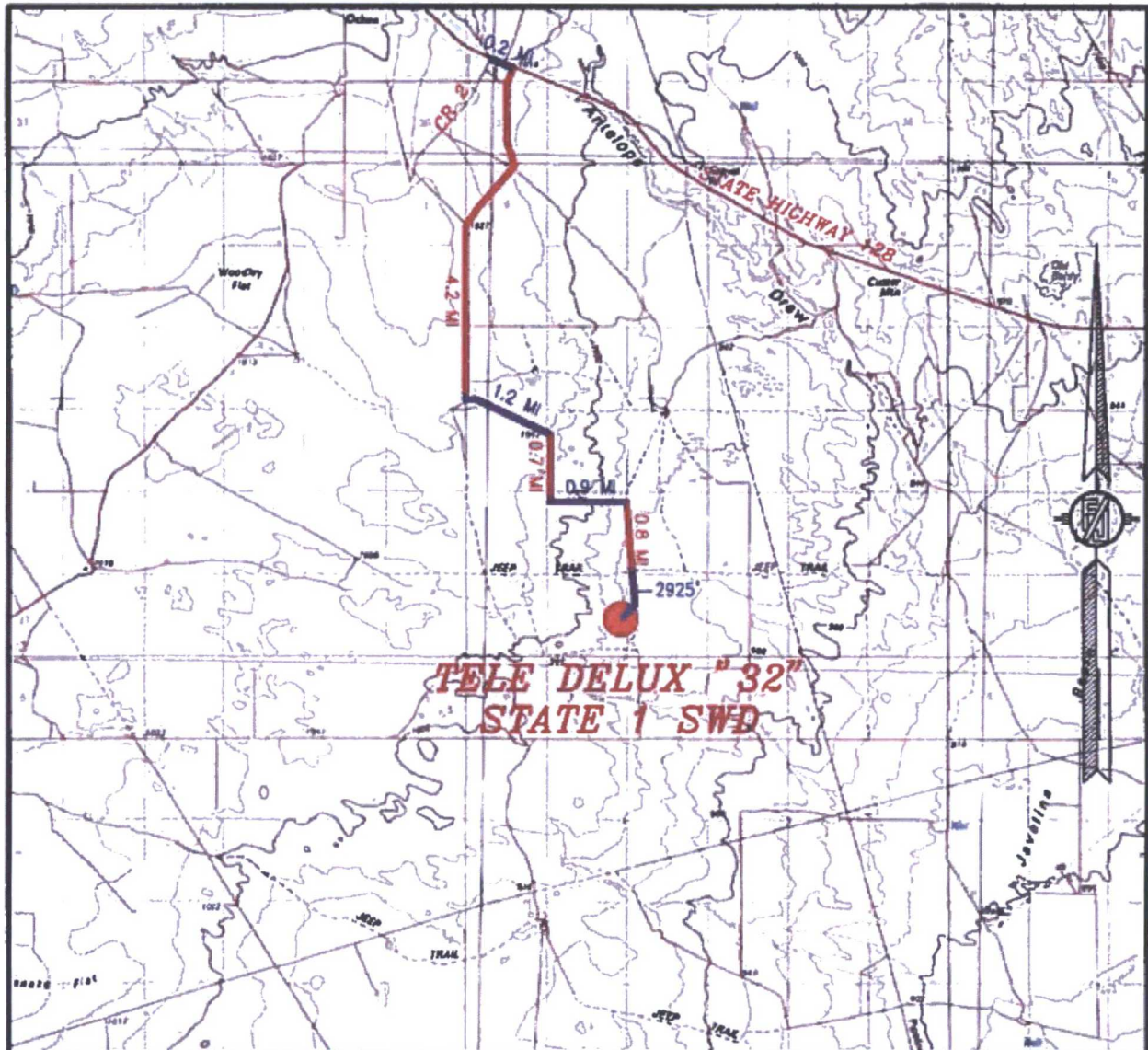


COG OPERATING, LLC
TELE DELUX "32" STATE 1 SWD
LOCATED 2560 FT. FROM THE SOUTH LINE
AND 400 FT. FROM THE EAST LINE OF
SECTION 32, TOWNSHIP 25 SOUTH,
RANGE 35 EAST, N.M.P.M.
LEA COUNTY, STATE OF NEW MEXICO

AUGUST 11, 2017

MADRON SURVEYING, INC. 301 SOUTH CANAL (575) 234-3341 CARLSBAD, NEW MEXICO SURVEY NO. 3872A

SECTION 32, TOWNSHIP 25 SOUTH, RANGE 35 EAST, N.M.P.M.
LEA COUNTY, STATE OF NEW MEXICO
VICINITY MAP



DISTANCES IN MILES

NOT TO SCALE

DIRECTIONS TO LOCATION

FROM STATE HIGHWAY 128 AND CR 2 (BATTLE AXE) GO EAST ON STATE HIGHWAY 0.2 OF A MILE, TURN RIGHT (SOUTH) ON LEASE ROAD GO SOUTH 4.2 MILES TO A "Y" INTERSECTION, TURN LEFT (SOUTHEAST) ON LEASE ROAD GO APPROX. 1.2 MILES, ROAD BENDS RIGHT (SOUTH), FOLLOW LEASE ROAD GO SOUTH 0.7 OF A MILE, TURN LEFT (EAST) GO EAST APPROX. 0.9 OF A MILE, TURN RIGHT (SOUTH) GO SOUTH APPROX. 0.8 OF A MILE, ROAD TURNS RIGHT (WEST) IS A ROAD LATH WITH RED & WHITE FLAGGING ON LEFT SIDE (SOUTH) OF ROAD. FOLLOW ROAD LATHS SOUTH & SOUTHWEST APPROX 2925' TO THE NORTHEAST PAD CORNER FOR THIS LOCATION.

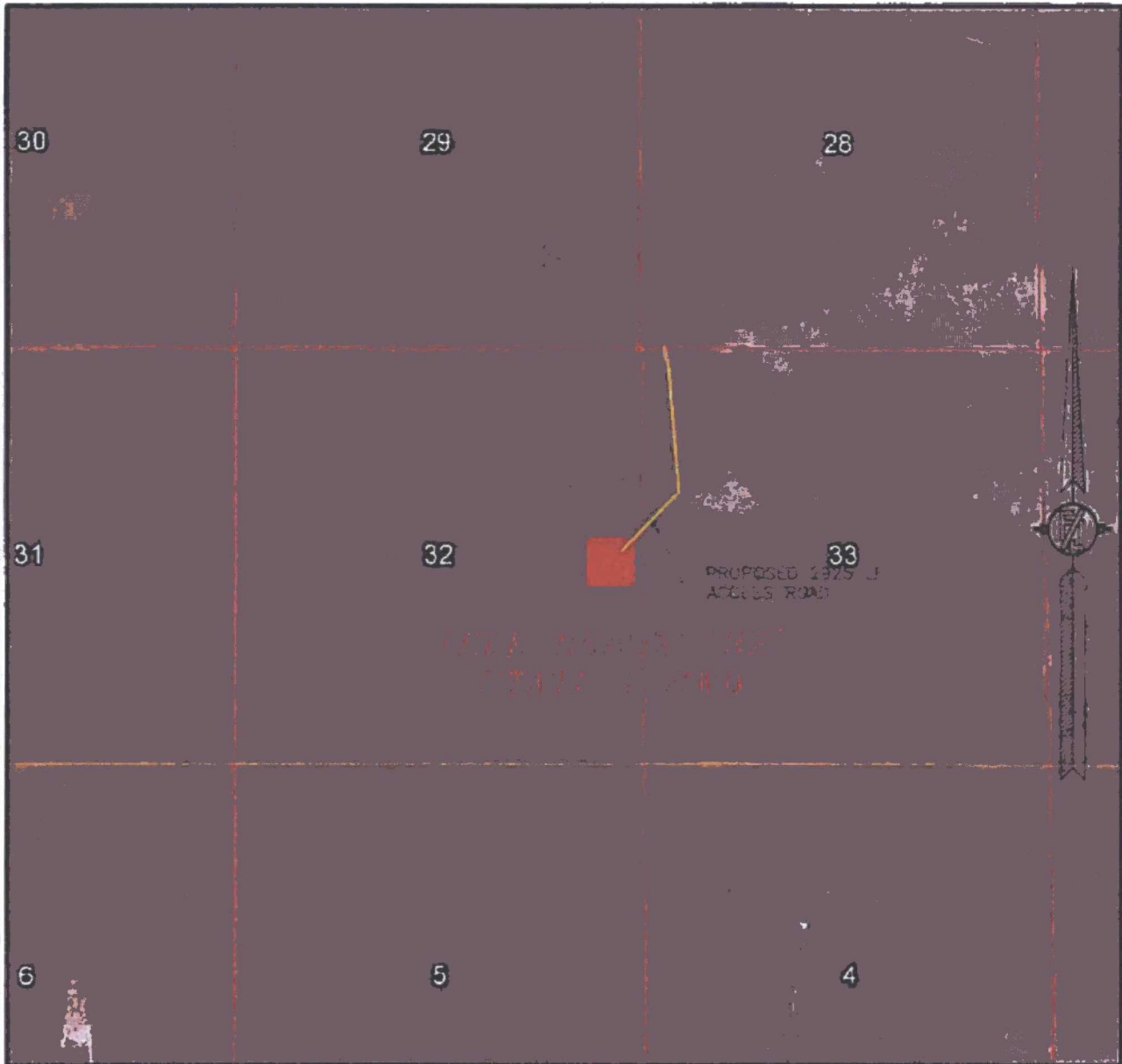
COG OPERATING, LLC
TELE DELUX "32" STATE 1 SWD
LOCATED 2560 FT. FROM THE SOUTH LINE
AND 400 FT. FROM THE EAST LINE OF
SECTION 32, TOWNSHIP 25 SOUTH,
RANGE 35 EAST, N.M.P.M.
LEA COUNTY, STATE OF NEW MEXICO

AUGUST 11, 2017

SURVEY NO. 3872A

MADRON SURVEYING, INC. 301 SOUTH CANAL (575) 234-3341 CARLSBAD, NEW MEXICO

SECTION 32, TOWNSHIP 25 SOUTH, RANGE 35 EAST, N.M.P.M.
LEA COUNTY, STATE OF NEW MEXICO
AERIAL PHOTO



NOT TO SCALE
AERIAL PHOTO:
GOOGLE EARTH
APRIL 2013

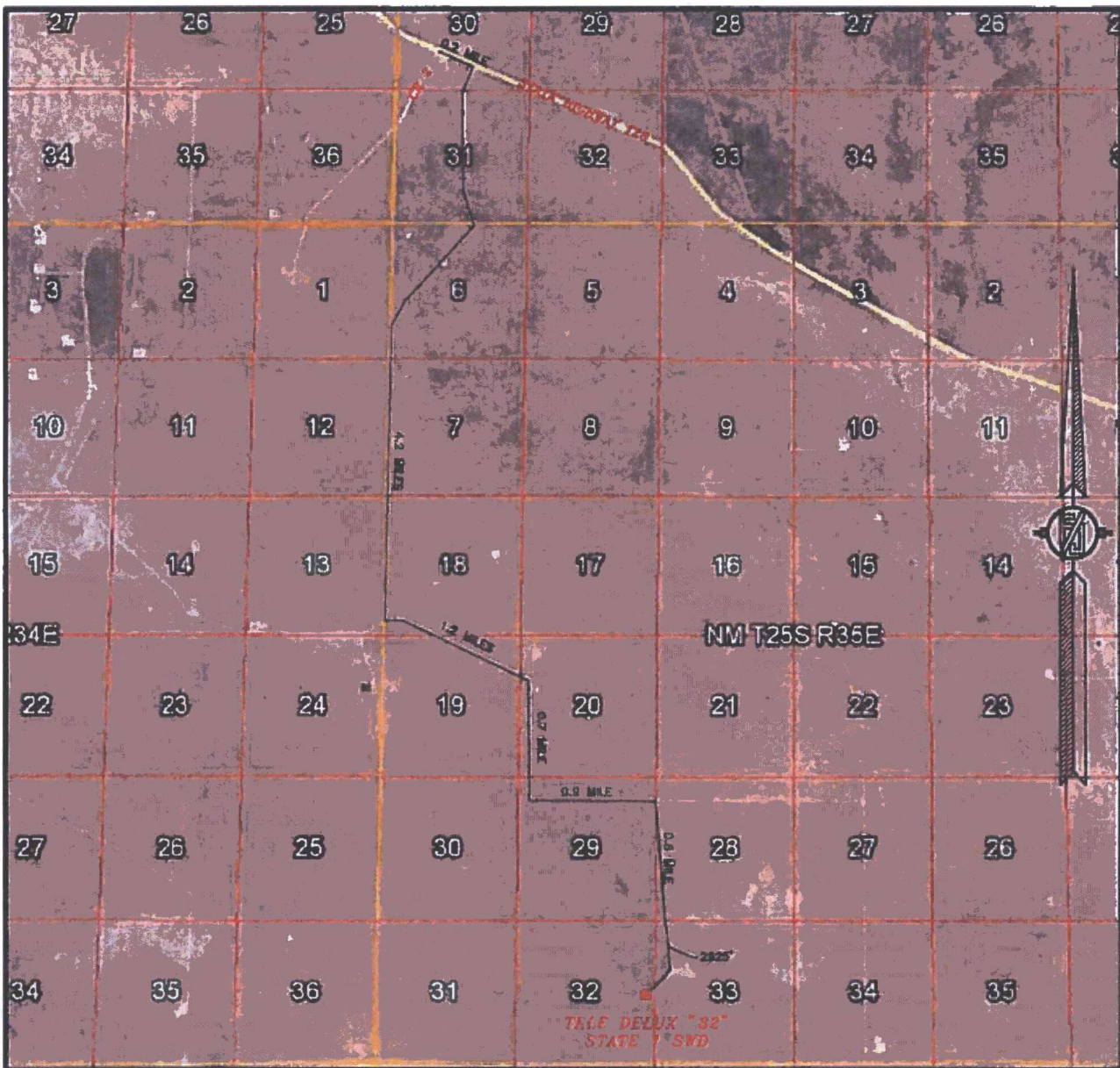
COG OPERATING, LLC
TELE DELUX "32" STATE 1 SWD
LOCATED 2560 FT. FROM THE SOUTH LINE
AND 400 FT. FROM THE EAST LINE OF
SECTION 32, TOWNSHIP 25 SOUTH,
RANGE 35 EAST, N.M.P.M.
LEA COUNTY, STATE OF NEW MEXICO

AUGUST 11, 2017

SURVEY NO. 3872A

MADRON SURVEYING, INC. 301 SOUTH CANAL (575) 234-3341 CARLSBAD, NEW MEXICO

SECTION 32, TOWNSHIP 25 SOUTH, RANGE 35 EAST, N.M.P.M.
LEA COUNTY, STATE OF NEW MEXICO
ACCESS AERIAL ROUTE MAP



NOT TO SCALE
AERIAL PHOTO:
GOOGLE EARTH
FEBRUARY 2014

COG OPERATING, LLC
TELE DELUX "32" STATE 1 SWD
LOCATED 2560 FT. FROM THE SOUTH LINE
AND 400 FT. FROM THE EAST LINE OF
SECTION 32, TOWNSHIP 25 SOUTH,
RANGE 35 EAST, N.M.P.M.
LEA COUNTY, STATE OF NEW MEXICO

AUGUST 11, 2017

SURVEY NO. 3872A

MADRON SURVEYING, INC. 301 SOUTH CANAL (575) 234-3341 CARLSBAD, NEW MEXICO