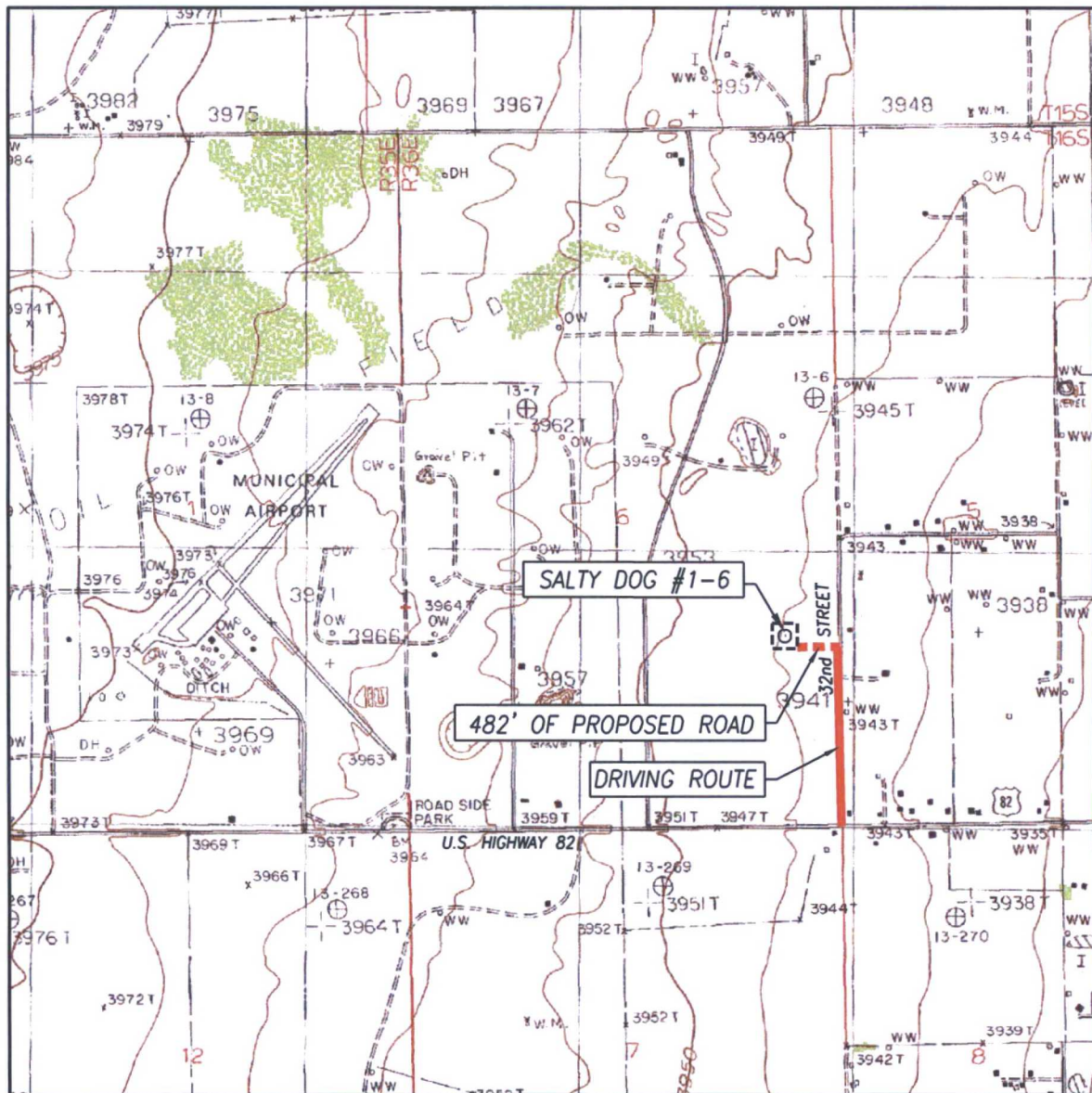


HOBBS OCD

JUL 31 2017

RECEIVED

TOPOGRAPHIC AND ACCESS ROAD MAP



SCALE: 1" = 2000'

CONTOUR INTERVAL:
LOVINGTON NW, N.M. - 5'

SEC. 6 TWP. 16-S RGE. 36-E

SURVEY N.M.P.M.

COUNTY LEA STATE NEW MEXICO

DESCRIPTION 2280' FSL & 660' FEL

ELEVATION 3946'

OPERATOR GULF EXPLORATION, L.L.C.

LEASE SALTY DOG

U.S.G.S. TOPOGRAPHIC MAP
LOVINGTON NW, N.M.

DIRECTIONS TO SALTY DOG #1-6:

FROM THE INTERSECTION OF U.S. HIGHWAY 82 AND 32ND STREET IN LOVINGTON, N.M., GO NORTH ON 32ND STREET APPROX. 0.42 MILES. TURN LEFT AT ROAD SURVEY LATHE AND GO WEST APPROX. 482 FEET TO THE SOUTHEAST CORNER OF THIS LOCATION.



PROVIDING SURVEYING SERVICES
SINCE 1946

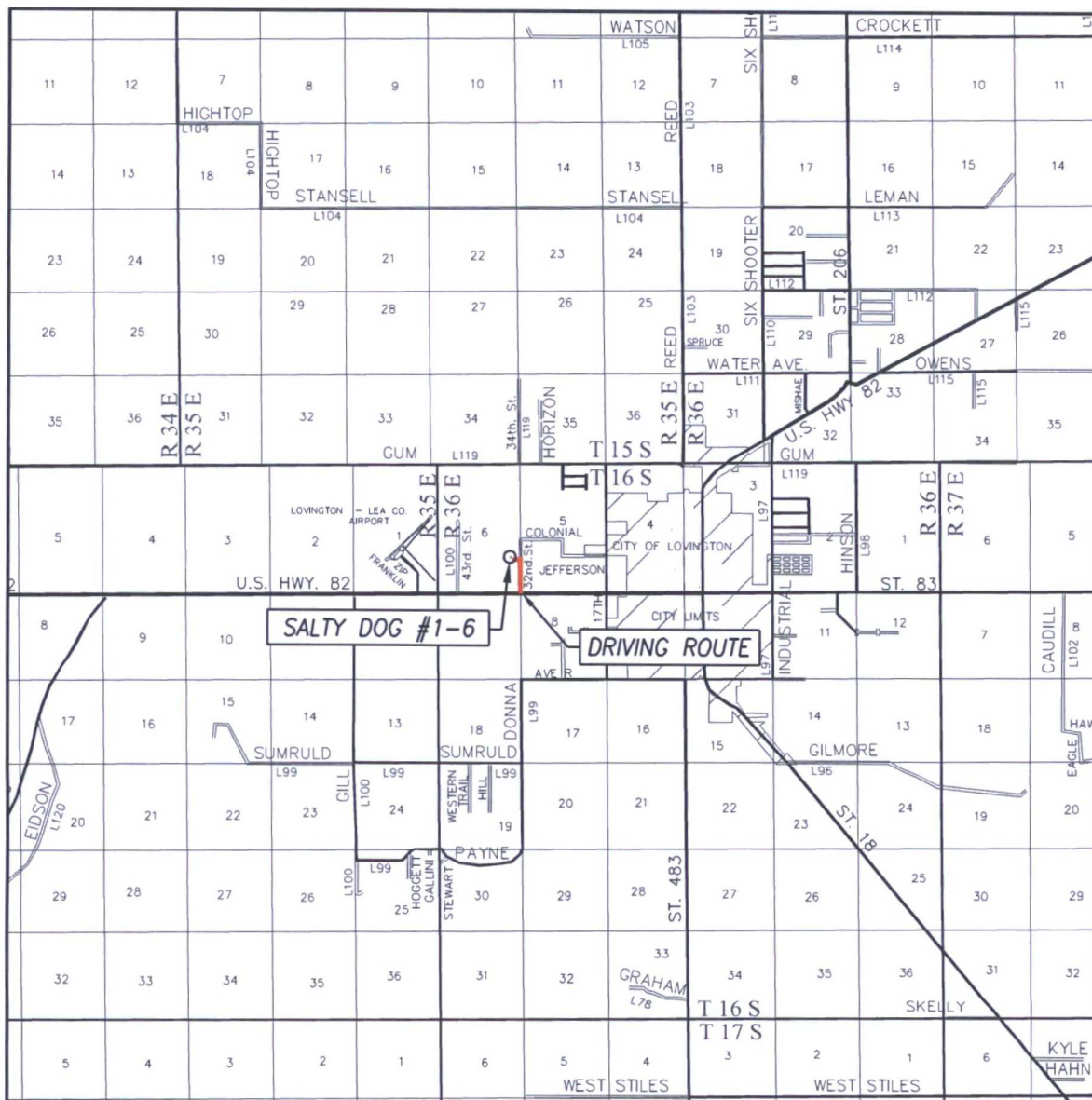
JOHN WEST SURVEYING COMPANY

412 N. DAL PASO HOBBS, N.M. 88240

(575) 393-3117 www.jwsc.biz

TBPLS# 10021000

VICINITY MAP



SCALE: 1" = 2 MILES

DRIVING ROUTE: SEE TOPOGRAPHICAL AND ACCESS ROAD MAP

SEC. 6 TWP. 16-S RGE. 36-E
 SURVEY N.M.P.M.
 COUNTY LEA STATE NEW MEXICO
 DESCRIPTION 2280' FSL & 660' FEL
 ELEVATION 3946'
 OPERATOR GULF EXPLORATION, L.L.C.
 LEASE SALTY DOG

PROVIDING SURVEYING SERVICES
 SINCE 1946
JOHN WEST SURVEYING COMPANY
 412 N. DAL PASO HOBBS, N.M. 88240
 (575) 393-3117 www.jwsc.biz
 TBPLS# 10021000

[illegible]

© Anjelica\2017\GULF EXPLORATION, LLC\WELLS\17110597 Salty Dog #1-6 in Tract 1, Field Subd, Sec 6, T16S, R36E