

District I
1625 N. French Dr., Hobbs, NM 88240
Phone: (575) 393-6161 Fax: (575) 393-0720
District II
811 S. First St., Artesia, NM 88210
Phone: (575) 748-1283 Fax: (575) 748-9720
District III
1000 Rio Brazos Road, Aztec, NM 87410
Phone: (505) 334-6178 Fax: (505) 334-6170
District IV
1220 S. St. Francis Dr., Santa Fe, NM 87505
Phone: (505) 476-3460 Fax: (505) 476-3462

State of New Mexico
Energy Minerals & Natural Resources Department
OIL CONSERVATION DIVISION
AUG 16 2017 1220 South St. Francis Dr.
Santa Fe, NM 87505

Form C-102
Revised August 1, 2011
Submit one copy to appropriate
District Office

☐ AMENDED REPORT

RECEIVED

WELL LOCATION AND ACREAGE DEDICATION PLAT

¹ API Number 30-025-43440	² Pool Code 59900	³ Pool Name Triple X; Bone Spring
⁴ Property Code 30884	⁵ Property Name THISTLE UNIT	⁶ Well Number 112H
⁷ OGRID No. 6137	⁸ Operator Name DEVON ENERGY PRODUCTION COMPANY, L.P.	⁹ Elevation 3643.8

¹⁰ Surface Location

UL or lot no.	Section	Township	Range	Lot Idn	Feet from the	North/South line	Feet from the	East/West line	County
O	34	23 S	33 E		248	SOUTH	1992	EAST	LEA

¹¹ Bottom Hole Location If Different From Surface

UL or lot no.	Section	Township	Range	Lot Idn	Feet from the	North/South line	Feet from the	East/West line	County
J	27	23 S	33 E		2492	SOUTH	2158	EAST	LEA

¹² Dedicated Acres 240	¹³ Joint or Infill	¹⁴ Consolidation Code	¹⁵ Order No.
---	-------------------------------	----------------------------------	-------------------------

No allowable will be assigned to this completion until all interests have been consolidated or a non-standard unit has been approved by the division.

<p>NW CORNER SEC. 27 LAT. = 32.2829508°N LONG. = 103.5687577°W NMSP EAST (FT) N = 467512.36 E = 777619.12</p> <p>W Q CORNER SEC. 27 LAT. = 32.2756899°N LONG. = 103.5687542°W NMSP EAST (FT) N = 464870.84 E = 777639.03</p> <p>NW CORNER SEC. 34 LAT. = 32.2684420°N LONG. = 103.5687493°W NMSP EAST (FT) N = 462234.08 E = 777659.34</p> <p>W Q CORNER SEC. 34 LAT. = 32.2611700°N LONG. = 103.5687420°W NMSP EAST (FT) N = 459588.56 E = 777680.44</p> <p>SW CORNER SEC. 34 LAT. = 32.2539037°N LONG. = 103.5687408°W NMSP EAST (FT) N = 456945.13 E = 777699.63</p>		<p>N 89°40'45"E 2641.26 FT N 89°40'58"E 2640.85 FT</p> <p>N Q CORNER SEC. 27 LAT. = 32.2829394°N LONG. = 103.5680213°W NMSP EAST (FT) N = 467527.14 E = 780259.81</p> <p>NE CORNER SEC. 27 LAT. = 32.2829270°N LONG. = 103.5516698°W NMSP EAST (FT) N = 467541.76 E = 782900.10</p> <p>E Q CORNER SEC. 27 LAT. = 32.2757053°N LONG. = 103.5516894°W NMSP EAST (FT) N = 464914.49 E = 782919.36</p> <p>NE CORNER SEC. 34 LAT. = 32.2684152°N LONG. = 103.5516675°W NMSP EAST (FT) N = 462262.37 E = 782939.28</p> <p>SE CORNER SEC. 34 LAT. = 32.2538795°N LONG. = 103.5516653°W NMSP EAST (FT) N = 456974.34 E = 782978.47</p>		<p>17 OPERATOR CERTIFICATION</p> <p>I hereby certify that the information contained herein is true and complete to the best of my knowledge and belief, and that this organization either owns a working interest or unleased mineral interest in the land including the proposed bottom hole location or has a right to drill this well at this location pursuant to a contract with an owner of such a mineral or working interest, or to a voluntary pooling agreement or a compulsory pooling order heretofore entered by the division.</p> <p><i>Rebecca Deal</i> 8/1/2017 Signature Date</p> <p>Rebecca Deal, Regulatory Analyst Printed Name</p> <p>rebecca.deal@dvn.com E-mail Address</p>
<p>NOTE: LATITUDE AND LONGITUDE COORDINATES ARE SHOWN USING THE NORTH AMERICAN DATUM OF 1983 (NAD83). LISTED NEW MEXICO STATE PLANE EAST COORDINATES ARE GRID (NAD83) BASIS OF BEARING AND DISTANCES USED ARE NEW MEXICO STATE PLANE EAST COORDINATES MODIFIED TO THE SURFACE VERTICAL DATUM NAVD83.</p> <p>THISTLE UNIT 112H ELEV. = 3643.8 LAT. = 32.2544706°N (NAD83) LONG. = 103.5581076°W NMSP EAST (FT) N = 457211.31 E = 780985.05</p>		<p>18 SURVEYOR CERTIFICATION</p> <p>I hereby certify that the well location shown on this plat was plotted from field notes of actual surveys made by me or under my supervision, and that the same is true and correct to the best of my belief.</p> <p>DECEMBER 8, 2016 Date of Survey</p> <p><i>Filimon F. Jaramelo</i> Signature and Seal of Professional Surveyor</p> <p>Certificate Number: FILIMON F. JARAMELO, PLS 12797 SURVEY NO. 4705E</p>		

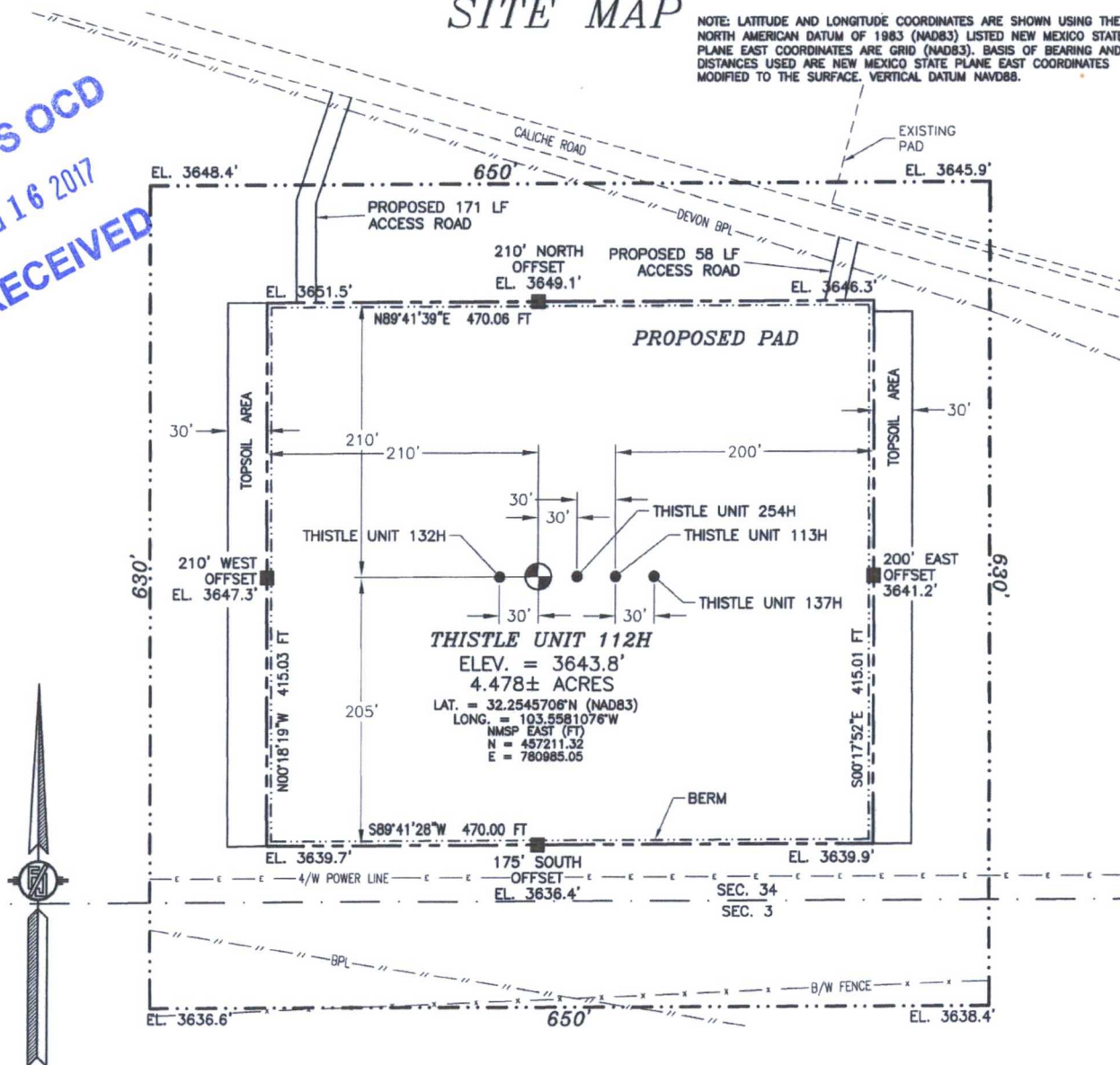
PP: 53' FSL & 2184' FEL, Sec 27-23S-33E

Project Area:
Producing Area:

SECTION 34, TOWNSHIP 23 SOUTH, RANGE 33 EAST, N.M.P.M.
LEA COUNTY, STATE OF NEW MEXICO
SITE MAP

NOTE: LATITUDE AND LONGITUDE COORDINATES ARE SHOWN USING THE NORTH AMERICAN DATUM OF 1983 (NAD83) LISTED NEW MEXICO STATE PLANE EAST COORDINATES ARE GRID (NAD83). BASIS OF BEARING AND DISTANCES USED ARE NEW MEXICO STATE PLANE EAST COORDINATES MODIFIED TO THE SURFACE. VERTICAL DATUM NAVD88.

HOBBS OCD
AUG 16 2017
RECEIVED



012 60 120 240

SCALE 1" = 120'

DIRECTIONS TO LOCATION

FROM STATE HIGHWAY 128 AND CR J2 (BRINSTOOL) GO NORTH ON CR J2 3.1 MILES, TURN RIGHT ON CALICHE ROAD AND GO EAST 0.44 OF A MILE, BEND LEFT AND GO NORTH 0.1 OF A MILE, BEND RIGHT AND GO SOUTHEAST 0.31 OF A MILE TO A PROPOSED ROAD SURVEY AND FOLLOW FLAGS SOUTH 58° TO THE NORTHEAST PAD CORNER FOR THIS LOCATION.

DEVON ENERGY PRODUCTION COMPANY, L.P.
THISTLE UNIT 112H

LOCATED 248 FT. FROM THE SOUTH LINE
AND 1992 FT. FROM THE EAST LINE OF
SECTION 34, TOWNSHIP 23 SOUTH,
RANGE 33 EAST, N.M.P.M.
LEA COUNTY, STATE OF NEW MEXICO

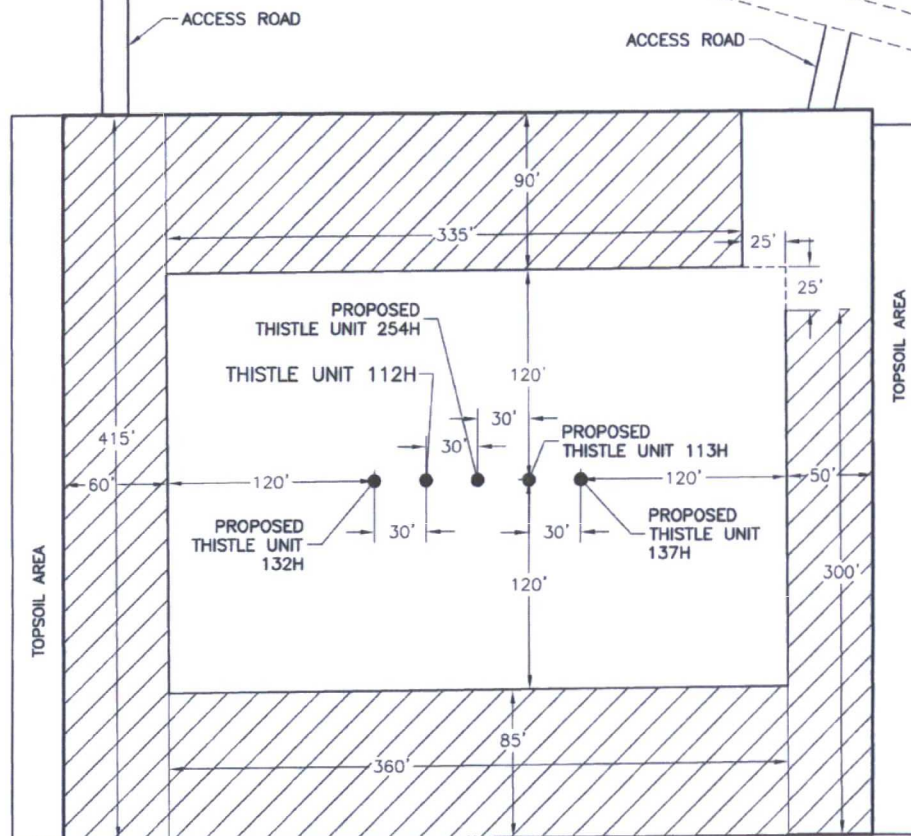
DECEMBER 8, 2016

SURVEY NO. 4705E

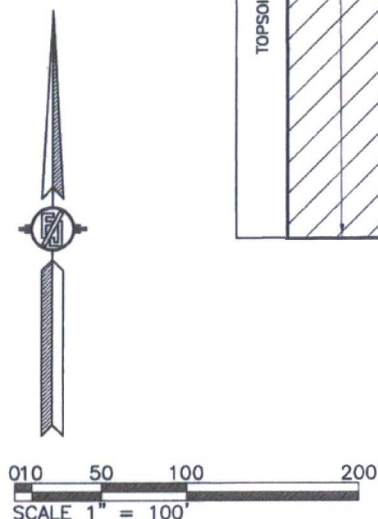
MADRON SURVEYING, INC. 301 SOUTH CANAL (575) 234-3341

CARLSBAD, NEW MEXICO

**PROPOSED INTERIM SITE RECLAMATION
FOR THISTLE UNIT 112H
SECTION 34, TOWNSHIP 23 SOUTH, RANGE 33 EAST, N.M.P.M.
LEA COUNTY, STATE OF NEW MEXICO**



 DENOTES RECLAMATION AREA
2.311± ACRES RECLAMATION AREA



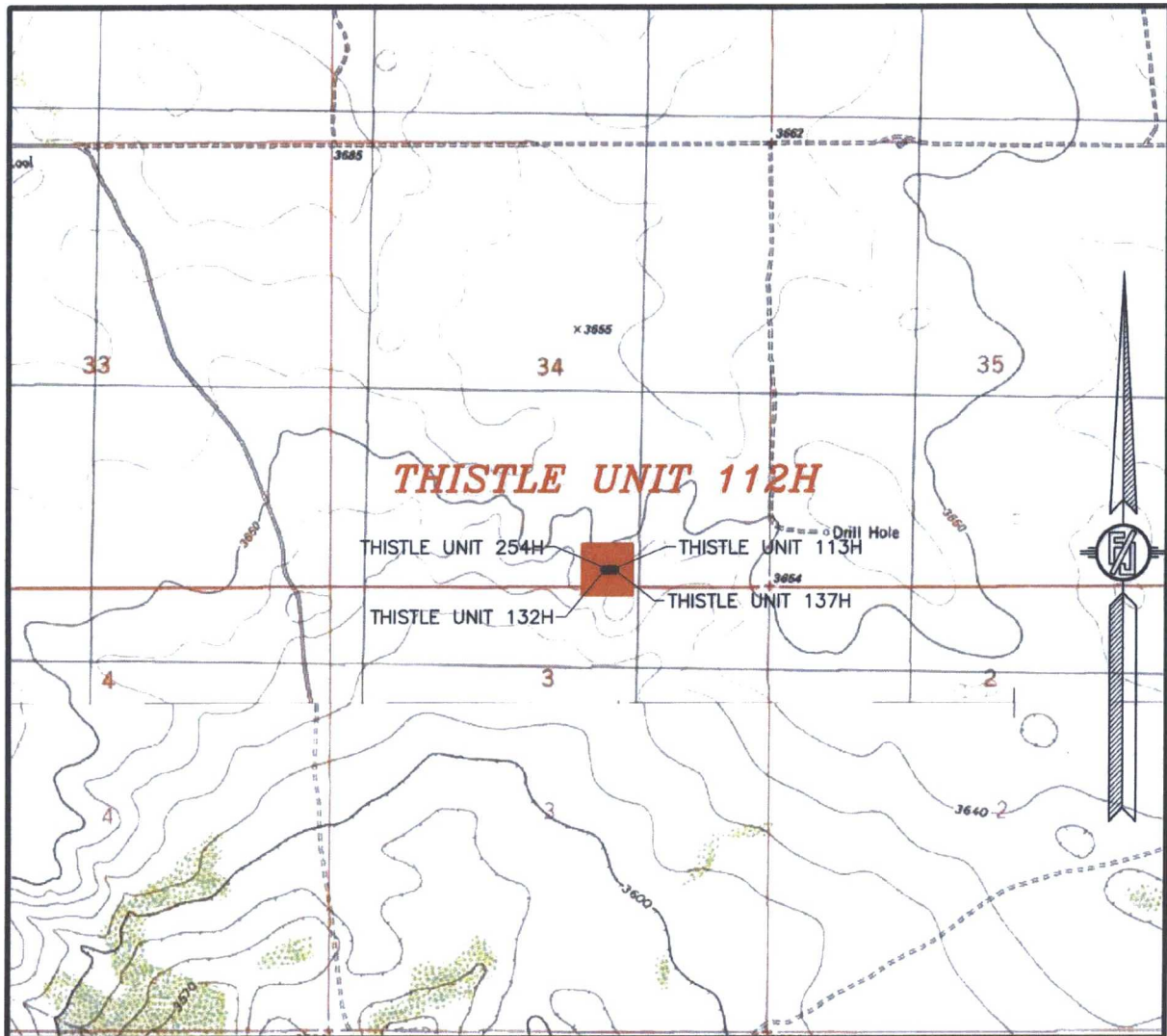
DEVON ENERGY PRODUCTION COMPANY, L.P.
THISTLE UNIT 112H
LOCATED 248 FT. FROM THE SOUTH LINE
AND 1992 FT. FROM THE EAST LINE OF
SECTION 34, TOWNSHIP 23 SOUTH,
RANGE 33 EAST, N.M.P.M.
LEA COUNTY, STATE OF NEW MEXICO

DECEMBER 8, 2016

SURVEY NO. 4705E

MADRON SURVEYING, INC. 301 SOUTH CANAL (575) 234-3341 CARLSBAD, NEW MEXICO

SECTION 34, TOWNSHIP 23 SOUTH, RANGE 33 EAST, N.M.P.M.
LEA COUNTY, STATE OF NEW MEXICO
LOCATION VERIFICATION MAP



USGS QUAD MAP:
TIP TOP WELLS

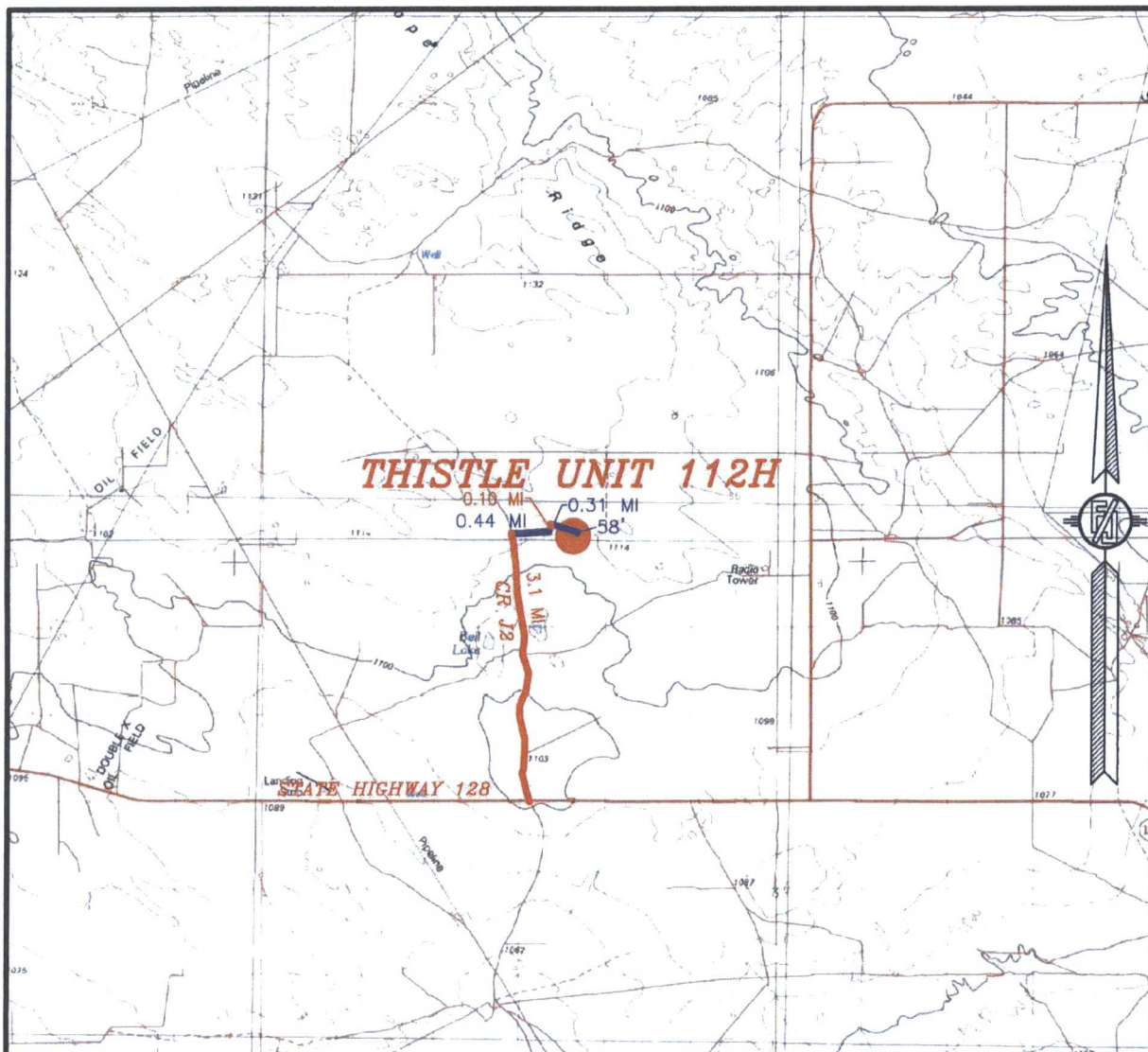
NOT TO SCALE

DEVON ENERGY PRODUCTION COMPANY, L.P.
THISTLE UNIT 112H
LOCATED 248 FT. FROM THE SOUTH LINE
AND 1992 FT. FROM THE EAST LINE OF
SECTION 34, TOWNSHIP 23 SOUTH,
RANGE 33 EAST, N.M.P.M.
LEA COUNTY, STATE OF NEW MEXICO

DECEMBER 8, 2016

MADRON SURVEYING, INC. 301 SOUTH CANAL (575) 234-3341 CARLSBAD, NEW MEXICO SURVEY NO. 4705E

SECTION 34, TOWNSHIP 23 SOUTH, RANGE 33 EAST, N.M.P.M.
LEA COUNTY, STATE OF NEW MEXICO
VICINITY MAP



DISTANCES IN MILES

NOT TO SCALE

DEVON ENERGY PRODUCTION COMPANY, L.P.
THISTLE UNIT 112H

LOCATED 248 FT. FROM THE SOUTH LINE
AND 1992 FT. FROM THE EAST LINE OF
SECTION 34, TOWNSHIP 23 SOUTH,
RANGE 33 EAST, N.M.P.M.
LEA COUNTY, STATE OF NEW MEXICO

DIRECTIONS TO LOCATION

FROM STATE HIGHWAY 128 AND CR J2 (BRINNSTOOL) GO NORTH ON CR J2 3.1 MILES, TURN RIGHT ON CALICHE ROAD AND GO EAST 0.44 OF A MILE, BEND LEFT AND GO NORTH 0.1 OF A MILE, BEND RIGHT AND GO SOUTHEAST 0.31 OF A MILE TO A PROPOSED ROAD SURVEY AND FOLLOW FLAGS SOUTH 58° TO THE NORTHEAST PAD CORNER FOR THIS LOCATION.

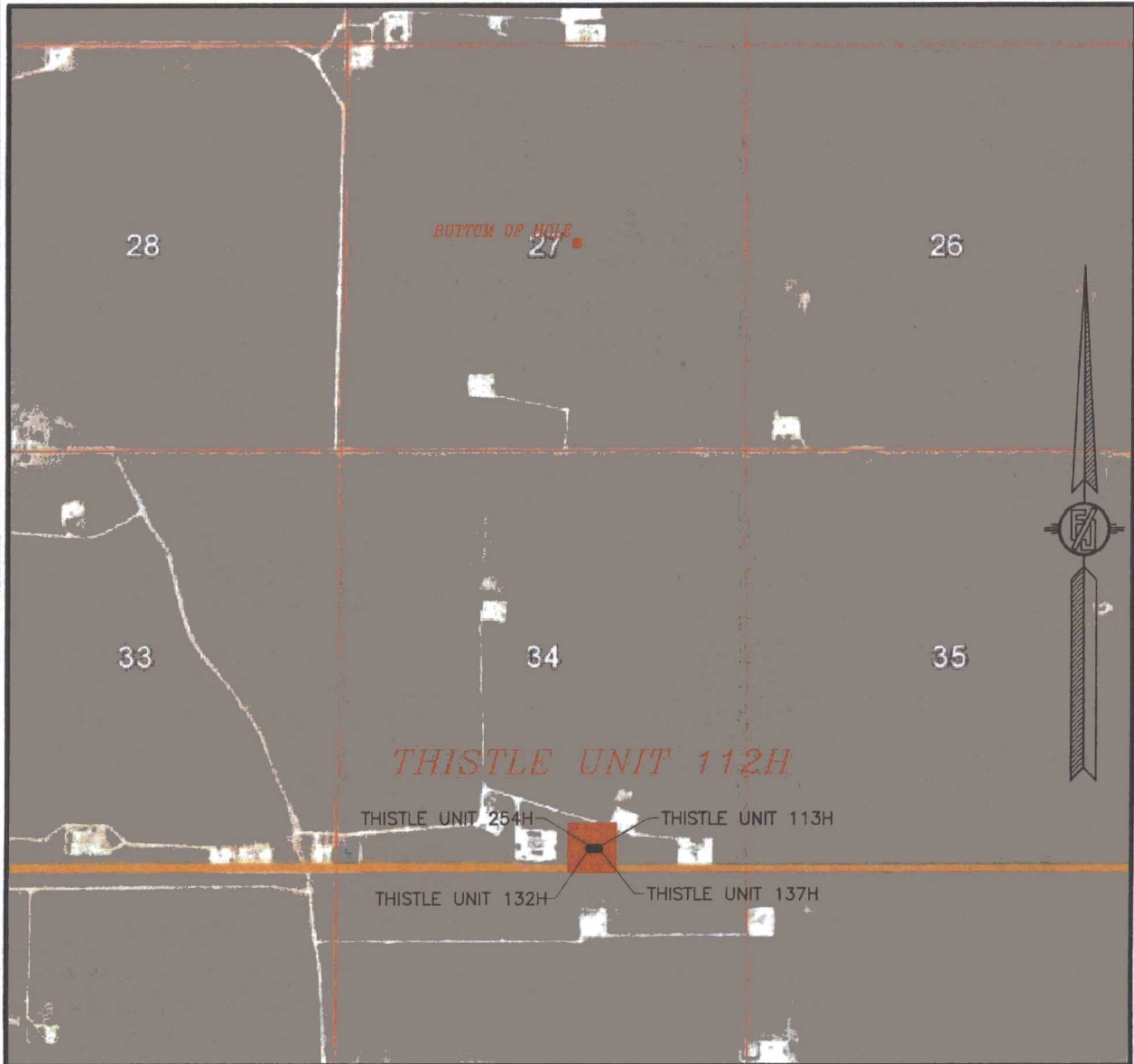
DECEMBER 8, 2016

SURVEY NO. 4705E

MADRON SURVEYING, INC. 301 SOUTH CANAL
(575) 234-3341

CARLSBAD, NEW MEXICO

SECTION 34, TOWNSHIP 23 SOUTH, RANGE 33 EAST, N.M.P.M.
LEA COUNTY, STATE OF NEW MEXICO
AERIAL PHOTO



NOT TO SCALE
AERIAL PHOTO:
GOOGLE EARTH
FEBRUARY 2014

DEVON ENERGY PRODUCTION COMPANY, L.P.
THISTLE UNIT 112H

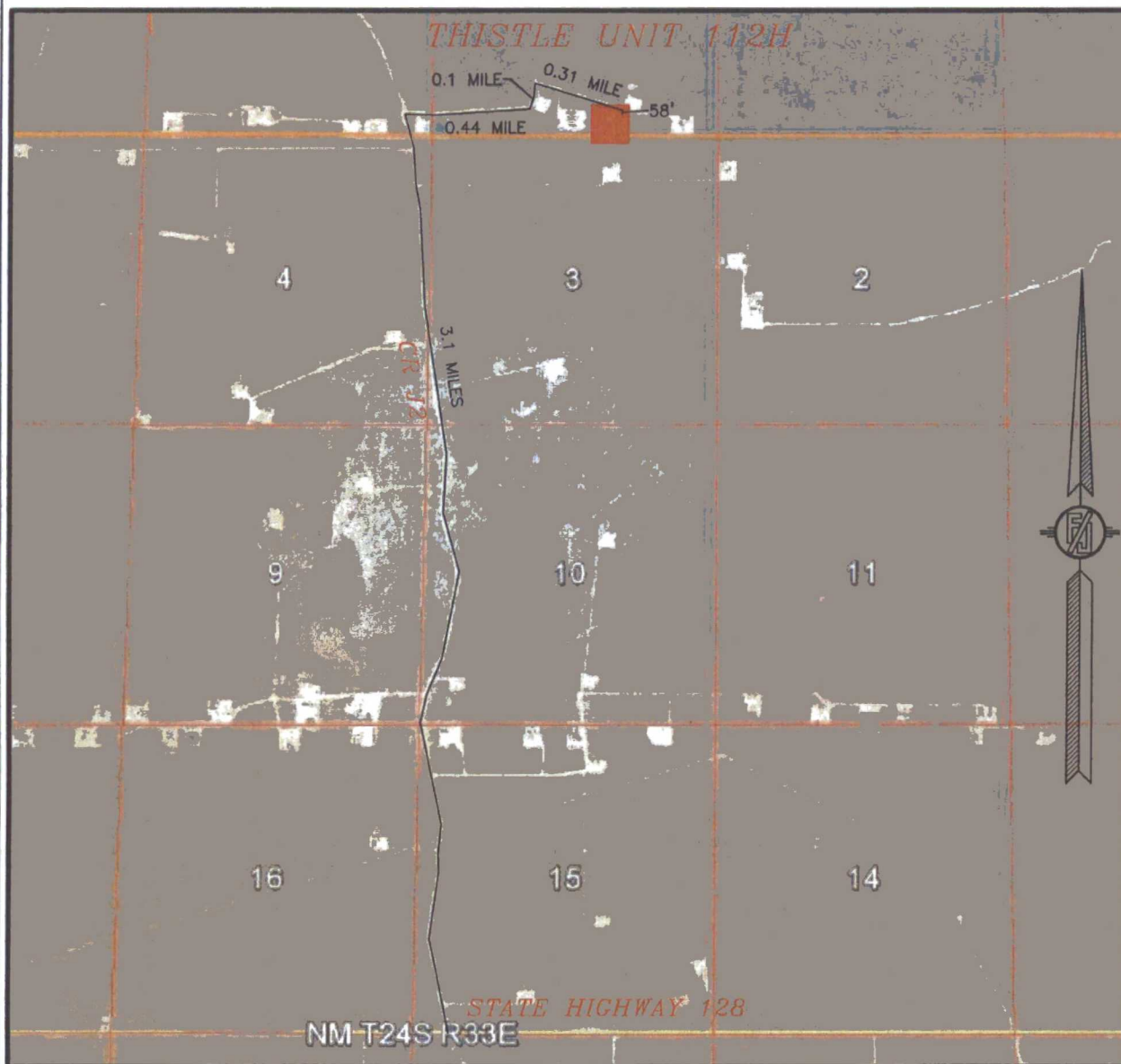
LOCATED 248 FT. FROM THE SOUTH LINE
AND 1992 FT. FROM THE EAST LINE OF
SECTION 34, TOWNSHIP 23 SOUTH,
RANGE 33 EAST, N.M.P.M.
LEA COUNTY, STATE OF NEW MEXICO

DECEMBER 8, 2016

SURVEY NO. 4705E

MADRON SURVEYING, INC. 301 SOUTH CANAL (575) 234-3341 CARLSBAD, NEW MEXICO

SECTION 34, TOWNSHIP 23 SOUTH, RANGE 33 EAST, N.M.P.M.
LEA COUNTY, STATE OF NEW MEXICO
ACCESS AERIAL ROUTE MAP



NOT TO SCALE
AERIAL PHOTO:
GOOGLE EARTH
FEBRUARY 2014

DEVON ENERGY PRODUCTION COMPANY, L.P.
THISTLE UNIT 112H

LOCATED 248 FT. FROM THE SOUTH LINE
AND 1992 FT. FROM THE EAST LINE OF
SECTION 34, TOWNSHIP 23 SOUTH,
RANGE 33 EAST, N.M.P.M.
LEA COUNTY, STATE OF NEW MEXICO

DECEMBER 8, 2016

SURVEY NO. 4705E

MADRON SURVEYING, INC. 301 SOUTH CANAL CARLSBAD, NEW MEXICO
(575) 234-3341