

District I  
1625 N. French Dr., Hobbs, NM 88240  
Phone: (575) 393-6161 Fax: (575) 393-0720  
District II  
811 S. First St., Artesia, NM 88210  
Phone: (575) 748-1283 Fax: (575) 748-9720  
District III  
1000 Rio Brazos Road, Aztec, NM 87410  
Phone: (505) 334-6178 Fax: (505) 334-6170  
District IV  
1220 S. St. Francis Dr., Santa Fe, NM 87505  
Phone: (505) 476-3460 Fax: (505) 476-3462

State of New Mexico  
Energy, Minerals & Natural Resources  
Department  
OIL CONSERVATION DIVISION  
1220 South St. Francis Dr.  
Santa Fe, NM 87505

HC3  
AUG 5 2017  
RECEIVED  
FORM C-102  
Revised August 1, 2011  
Submit one copy to appropriate  
District Office  
AMENDED REPORT

WELL LOCATION AND ACREAGE DEDICATION PLAT

<sup>1</sup> API Number 30-025- <b>43583</b>	<sup>2</sup> Pool Code 97903	<sup>3</sup> Pool Name WC-025 G-08 S253235G; Lower Bone Spring
<sup>4</sup> Property Code 38965	<sup>5</sup> Property Name BLACK BEAR 36 STATE	<sup>6</sup> Well Number #601H
<sup>7</sup> OGRID No. 7377	<sup>8</sup> Operator Name EOG RESOURCES, INC.	<sup>9</sup> Elevation 3328'

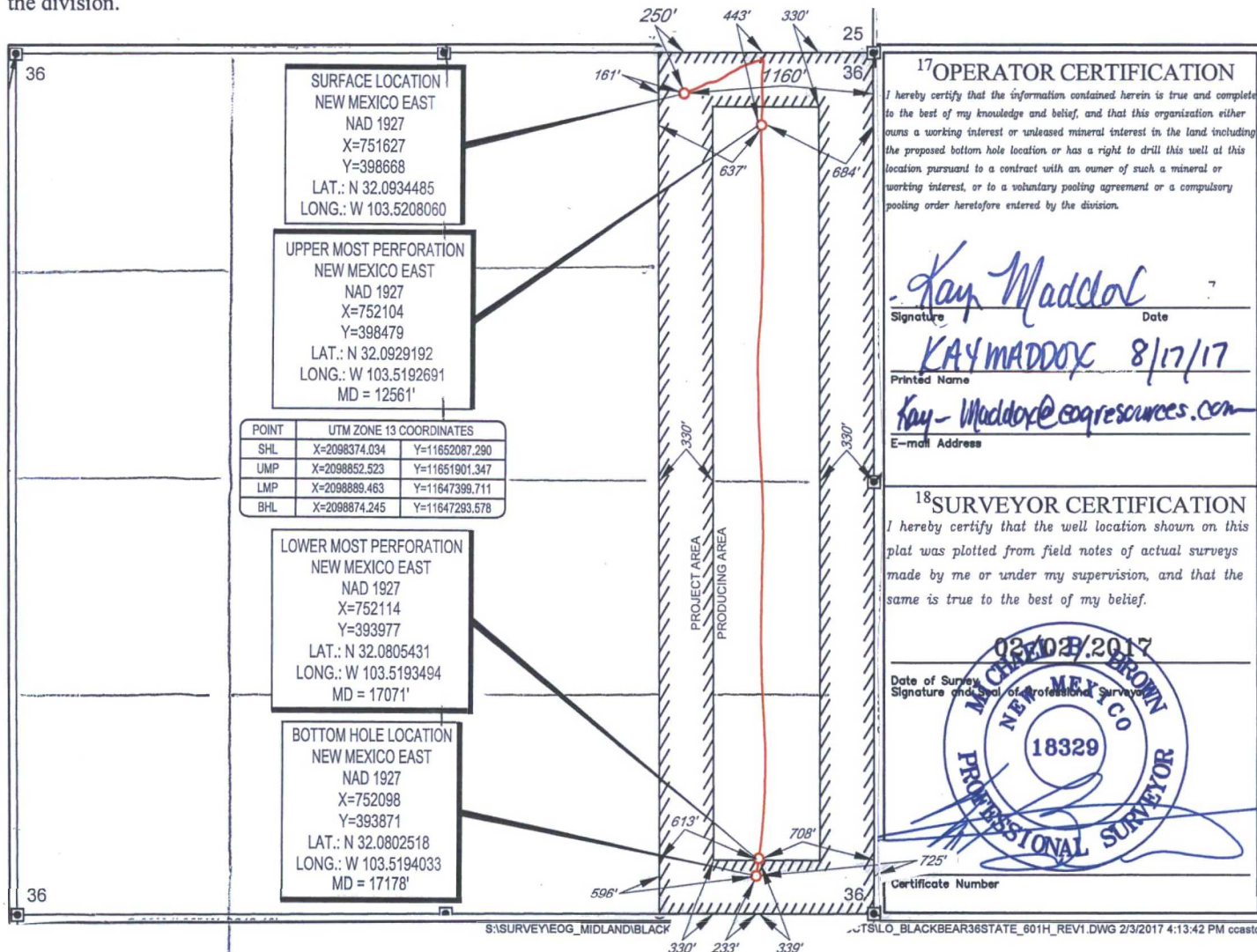
<sup>10</sup>Surface Location

UL or lot no.	Section	Township	Range	Lot Idn	Feet from the	North/South line	Feet from the	East/West line	County
A	36	25-S	33-E	-	250'	NORTH	1160'	EAST	LEA

UL or lot no.	Section	Township	Range	Lot Idn	Feet from the	North/South line	Feet from the	East/West line	County
P	36	25-S	33-E	-	233	SOUTH	725	EAST	LEA

<sup>12</sup> Dedicated Acres 160.00	<sup>13</sup> Joint or Infill	<sup>14</sup> Consolidation Code	<sup>15</sup> Order No.
---	-------------------------------	----------------------------------	-------------------------

No allowable will be assigned to this completion until all interests have been consolidated or a non-standard unit has been approved by the division.



SCALE: 1" = 1000'

0' 500' 1000'

SECTION 36, TOWNSHIP 25-S, RANGE 33-E, N.M.P.M.  
LEA COUNTY, NEW MEXICO

FND. BRASS CAP,  
U.S. G.L.O. SUR.  
1913

N 89°32' 28" E, 2642.84'

N 89°29' 29" E, 2642.99'

FND. BRASS CAP,  
U.S. G.L.O. SUR.  
1913

FND. BRASS CAP,  
U.S. G.L.O. SUR.  
1913

FND. BRASS CAP,  
U.S. G.L.O. SUR.  
1913

SURFACE LOCATION  
NEW MEXICO EAST  
NAD 1927  
X=751627  
Y=398668  
LAT.: N 32.0934485  
LONG.: W 103.5208060

UPPER MOST PERFORATION  
NEW MEXICO EAST  
NAD 1927  
X=752104  
Y=398479  
LAT.: N 32.0929192  
LONG.: W 103.5192691  
MD = 12561'

POINT	UTM ZONE 13 COORDINATES	
SHL	X=2098374.034	Y=11652087.290
UMP	X=2098852.523	Y=11651901.347
LMP	X=2098889.463	Y=11647399.711
BHL	X=2098874.245	Y=11647293.578

LOWER MOST PERFORATION  
NEW MEXICO EAST  
NAD 1927  
X=752114  
Y=393977  
LAT.: N 32.0805431  
LONG.: W 103.5193494  
MD = 17071'

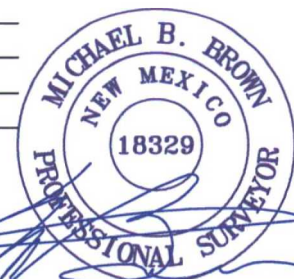
BOTTOM HOLE LOCATION  
NEW MEXICO EAST  
NAD 1927  
X=752098  
Y=393871  
LAT.: N 32.0802518  
LONG.: W 103.5194033  
MD = 17178'

FND. BRASS CAP,  
U.S. G.L.O. SUR.  
1913

S 89°34' 38" W, 2643.10'

FND. BRASS CAP,  
U.S. G.L.O. SUR.  
1913

S 89°35' 37" W, 2641.19'



Michael Blake Brown, P.S. No. 18329  
AUGUST 8, 2017

LEASE NAME & WELL NO.: BLACK BEAR 36 STATE #601H  
SECTION 36 TWP 25-S RGE 33-E SURVEY N.M.P.M.  
COUNTY LEA STATE NM ELEVATION 3328'  
DESCRIPTION 250' FNL & 1160' FEL



**TOPOGRAPHIC**  
LOYALTY INNOVATION LEGACY

1400 EVERMAN PARKWAY, Ste. 197 • FT. WORTH, TEXAS 76140  
TELEPHONE: (817) 744-7512 • FAX (817) 744-7548  
2903 NORTH BIG SPRING • MIDLAND, TEXAS 79705  
TELEPHONE: (432) 682-1853 OR (800) 767-1853 • FAX (432) 682-1743  
WWW.TOPOGRAPHIC.COM



BLACK BEAR 36 STATE  
#601H  
AS-COMPLETED

REVISION:

INT DATE

DATE: 08/08/17

FILE:AD\_BLACKBEAR36STATE\_601H

DRAWN BY: A.M.D.

SHEET: 1 OF 1

NOTES:

1. ORIGINAL DOCUMENT SIZE: 8.5" X 11"
2. ALL BEARINGS, DISTANCES, AND COORDINATE VALUES CONTAINED HEREIN ARE GRID BASED UPON THE NEW MEXICO STATE PLANE COORDINATE SYSTEM, EAST ZONE, U.S. SURVEY FEET, NORTH AMERICAN DATUM 1927.
3. CERTIFICATION IS MADE ONLY TO THE LOCATION OF THIS EASEMENT, IN RELATION TO THE EVIDENCE FOUND DURING A FIELD SURVEY, MADE ON THE GROUND, UNDER MY SUPERVISION, AND USING DOCUMENTATION PROVIDED BY EOG RESOURCES, INC. ONLY UTILITIES/EASEMENTS THAT WERE VISIBLE ON THE DATE OF THIS SURVEY, WITHIN/ADJOINING THIS EASEMENT, HAVE BEEN LOCATED AS SHOWN HEREON OF WHICH I HAVE KNOWLEDGE. THIS CERTIFICATION IS LIMITED TO THOSE PERSONS OR ENTITIES SHOWN ON THE FACE OF THIS PLAT AND IS NON-TRANSFERABLE, AND MADE FOR THIS TRANSACTION ONLY.