

Bureau of Land Management

Hobbs Field Office

414 W. Taylor

Hobbs, New Mexico

505.393.3612

WATER PRODUCTION & DISPOSAL INFORMATION

Well: PISTOLERO 15 FED # 701H

NWNW Sec 15 T25S, R34E

30-025-43534

1. Name of formations producing water on lease: WOLFCAMP
2. Amount of water produced from all formations in barrels per day 2000-4000 BWPD
3. How water is stored on lease Tanks 4-400 bbl tanks
4. How water is moved to disposal facility Pipeline/Trucked
5. Disposal Facility:
 - a. Facility Operators name EOG RESOURCES, INC
 - b. Name of facility or well name & number
Black Bear 36 State #5
30-025-40585
H-36-25S-33E
 - c. Type of facility or wells WDW
 - d. Permit No SWD -1359



EOG Resources, Inc.
Pistolero 15 FED #701H
API 30-025-43534
SEC.15-T25S-R34E

6/30/2017

LEGEND

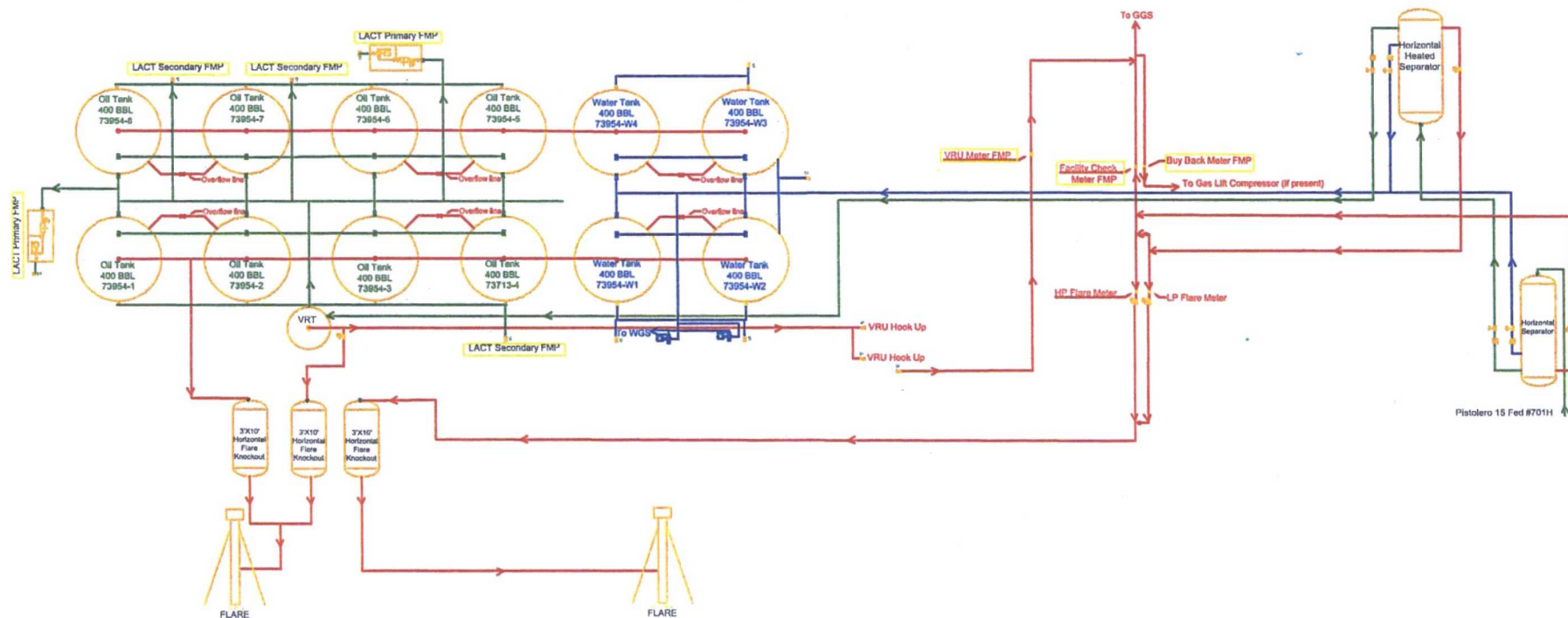
Valve Open	Turbine/ Coriolis Meter
Valve Closed	Oil
Valve Sealed	Gas
Orifice Meter	Water

FACILITY DIAGRAM
 Shown: Major equipment, vessels, process piping, and valves
 Not shown: Auxiliary process systems such as pneumatic air system, gas lift system, roll lines, recirculating lines, vent lines, and small drain lines

PRODUCTION PHASE: All valves that provide access to production are effectively sealed in the closed position.

SALES THROUGH LACT UNITS: Sale is measured through LACT units. All other valves that provide access to production (load-out valves) are effectively sealed in the closed position.

WATER TANKS: If the possibility for oil to enter water tanks exists through common recirculating or equalizing lines, oil tanks are isolated from water tanks by valves effectively sealed in the closed position.



Facility Overview: Please see pages 2 and 3 for details.

