

District I  
1625 N French Dr., Hobbs, NM 88240  
Phone: (575) 393-6161 Fax: (575) 393-0720  
District II  
811 S. First St., Artesia, NM 88210  
Phone: (575) 748-1283 Fax: (575) 748-9720  
District III  
1000 Rio Brazos Road, Aztec, NM 87410  
Phone: (505) 334-6178 Fax: (505) 334-6170  
District IV  
1220 S St. Francis Dr., Santa Fe, NM 87505  
Phone: (505) 476-3460 Fax: (505) 476-3462

State of New Mexico  
Energy, Minerals & Natural Resources  
Department  
OIL CONSERVATION DIVISION  
1220 South St. Francis Dr.  
Santa Fe, NM 87505

FORM C-102  
Revised August 1, 2011  
Submit one copy to appropriate  
District Office

☐ AMENDED REPORT

WELL LOCATION AND ACREAGE DEDICATION PLAT

<sup>1</sup> API Number 30-025- 43534	<sup>2</sup> Pool Code 98116	<sup>3</sup> Pool Name WC-025 G-09 S253402N; Wolfcamp
<sup>4</sup> Property Code	<sup>5</sup> Property Name PISTOLERO 15 FED	<sup>6</sup> Well Number #701H
<sup>7</sup> OGRID No. 7377	<sup>8</sup> Operator Name EOG RESOURCES, INC.	<sup>9</sup> Elevation 3334'

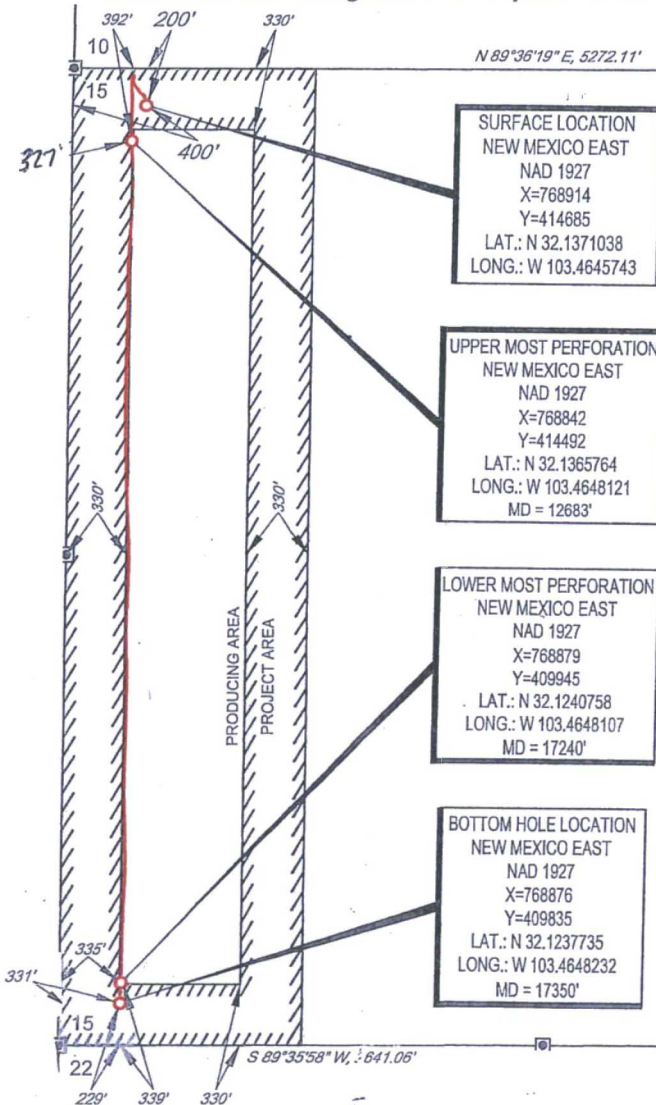
<sup>10</sup>Surface Location

UL or lot no.	Section	Township	Range	Lot Idn	Feet from the	North/South line	Feet from the	East/West line	County
D	15	25-S	34-E	-	200'	NORTH	400'	WEST	LEA

UL or lot no.	Section	Township	Range	Lot Idn	Feet from the	North/South line	Feet from the	East/West line	County
M	15	25-S	34-E	-	229'	SOUTH	331'	WEST	LEA

<sup>11</sup> Dedicated Acres 160.00	<sup>12</sup> Joint or Infill	<sup>13</sup> Consolidation Code	<sup>14</sup> Order No.
---	-------------------------------	----------------------------------	-------------------------

No allowable will be assigned to this completion until all interests have been consolidated or a non-standard unit has been approved by



SURFACE LOCATION  
NEW MEXICO EAST  
NAD 1927  
X=768914  
Y=414685  
LAT.: N 32.1371038  
LONG.: W 103.4645743

UPPER MOST PERFORATION  
NEW MEXICO EAST  
NAD 1927  
X=768842  
Y=414492  
LAT.: N 32.1365764  
LONG.: W 103.4648121  
MD = 12683'

LOWER MOST PERFORATION  
NEW MEXICO EAST  
NAD 1927  
X=768879  
Y=409945  
LAT.: N 32.1240758  
LONG.: W 103.4648107  
MD = 17240'

BOTTOM HOLE LOCATION  
NEW MEXICO EAST  
NAD 1927  
X=768876  
Y=409835  
LAT.: N 32.1237735  
LONG.: W 103.4648232  
MD = 17350'

POINT	UTM ZONE 13 COORDINATES	
SHL	X=2115558.656	Y=11668208.473
UMP	X=2115487.999	Y=11668015.597
LMP	X=2115553.241	Y=11663469.025
BHL	X=2115550.941	Y=11663339.027

<sup>17</sup>OPERATOR CERTIFICATION

I hereby certify that the information contained herein is true and complete to the best of my knowledge and belief, and that this organization either owns a working interest or unleased mineral interest in the land including the proposed bottom hole location or has a right to drill this well at this location pursuant to a contract with an owner of such a mineral or working interest, or to a voluntary pooling agreement or a compulsory pooling order heretofore entered by the division.

Signature: *Kay Maddox* Date: 7/12/17

Printed Name: KAY MADDOX

E-mail Address:

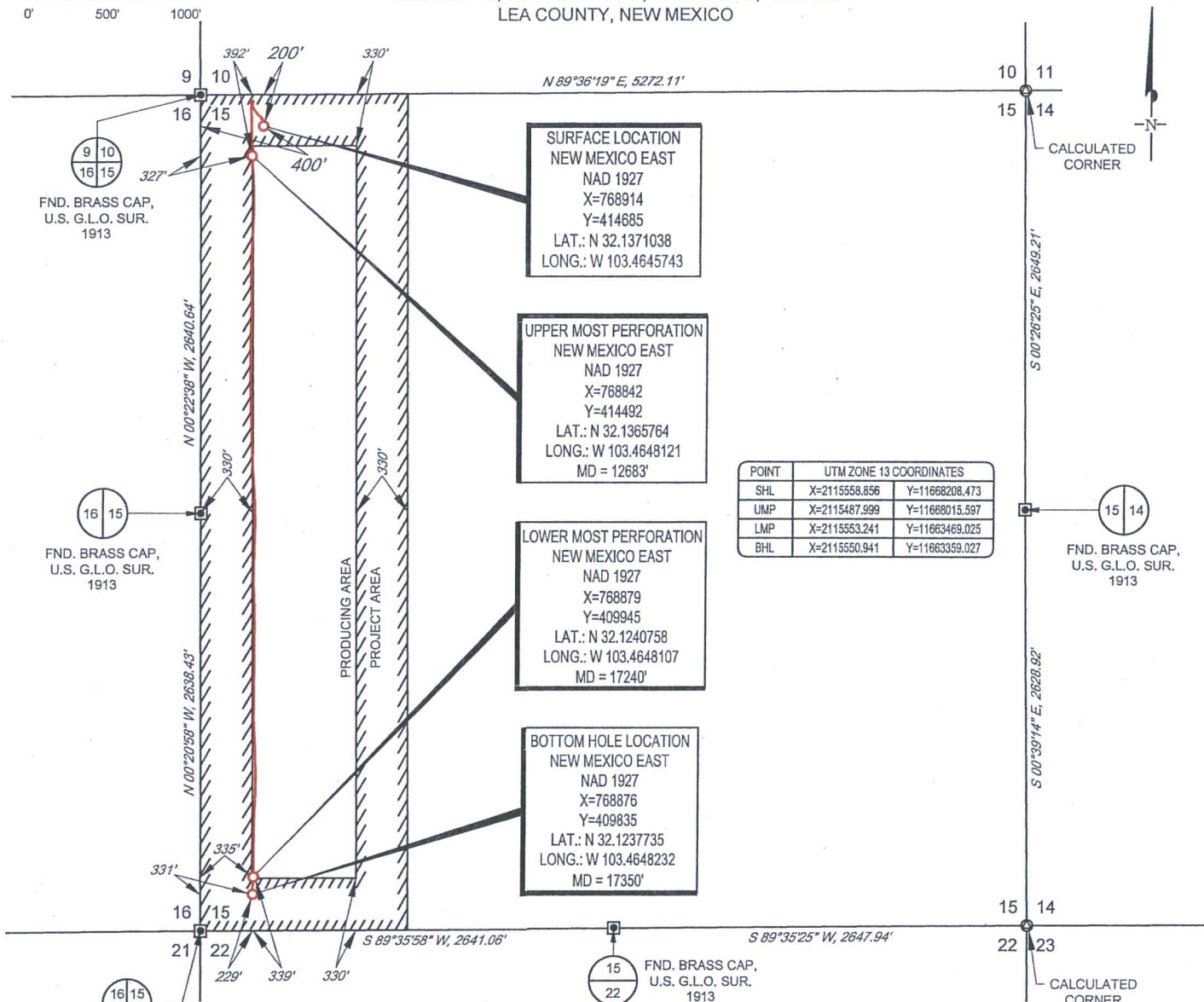
<sup>18</sup>SURVEYOR CERTIFICATION

I hereby certify that the well location shown on this plat was plotted from field notes of actual surveys made by me or under my supervision, and that the same is true to the best of my belief.

Date of Survey: 07/16/2017  
Signature: [Signature]  
Professional Surveyor  
Certificate Number: 18329

SCALE: 1" = 1000'

SECTION 15, TOWNSHIP 25-S, RANGE 34-E, N.M.P.M.  
LEA COUNTY, NEW MEXICO

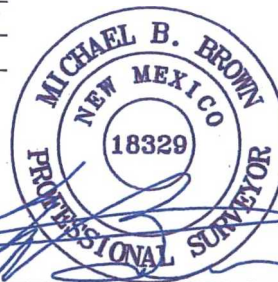


LEASE NAME & WELL NO.: PISTOLERO 15 FED #701H  
SECTION 15 TWP 25-S RGE 34-E SURVEY N.M.P.M.  
COUNTY LEA STATE NM ELEVATION 3334'  
DESCRIPTION 200' FNL & 400' FWL



**TOPOGRAPHIC**  
LOYALTY INNOVATION LEGACY

1400 EVERMAN PARKWAY, Ste. 197 • FT. WORTH, TEXAS 76140  
TELEPHONE: (817) 744-7512 • FAX (817) 744-7548  
2903 NORTH BIG SPRING • MIDLAND, TEXAS 79705  
TELEPHONE: (432) 682-1653 OR (800) 767-1653 • FAX (432) 682-1743  
WWW.TOPOGRAPHIC.COM



Michael Blake Brown, P.S. No. 18329  
JUNE 29, 2017

<b>PISTOLERO 15 FED #701H</b> <b>AS-COMPLETED</b> DATE: 06/29/17 FILE: AD_PISTOLERO_15_FED_701H DRAWN BY: A.C.C. SHEET: 1 OF 1	REVISION:	<b>NOTES:</b> 1. ORIGINAL DOCUMENT SIZE: 8.5" X 11" 2. ALL BEARINGS, DISTANCES, AND COORDINATE VALUES CONTAINED HEREIN ARE GRID BASED UPON THE NEW MEXICO STATE PLANE COORDINATE SYSTEM, EAST ZONE, U.S. SURVEY FEET, NORTH AMERICAN DATUM 19 27. 3. THIS WELL LOCATION SHOWN HEREON HAS BEEN SURVEYED ON THE GROUND UNDER MY SUPERVISION AND PREPARED ACCORDING TO THE EVIDENCE FOUND AT THE TIME OF SURVEY, AND DATA PROVIDED BY EOG RESOURCES, INC. THIS CERTIFICATION IS MADE AND LIMITED TO THOSE PERSONS OR ENTITIES SHOWN ON THE FACE OF THIS PLAT AND IS NON-TRANSFERABLE. THIS SURVEY IS CERTIFIED FOR THIS TRANSACTION ONLY.