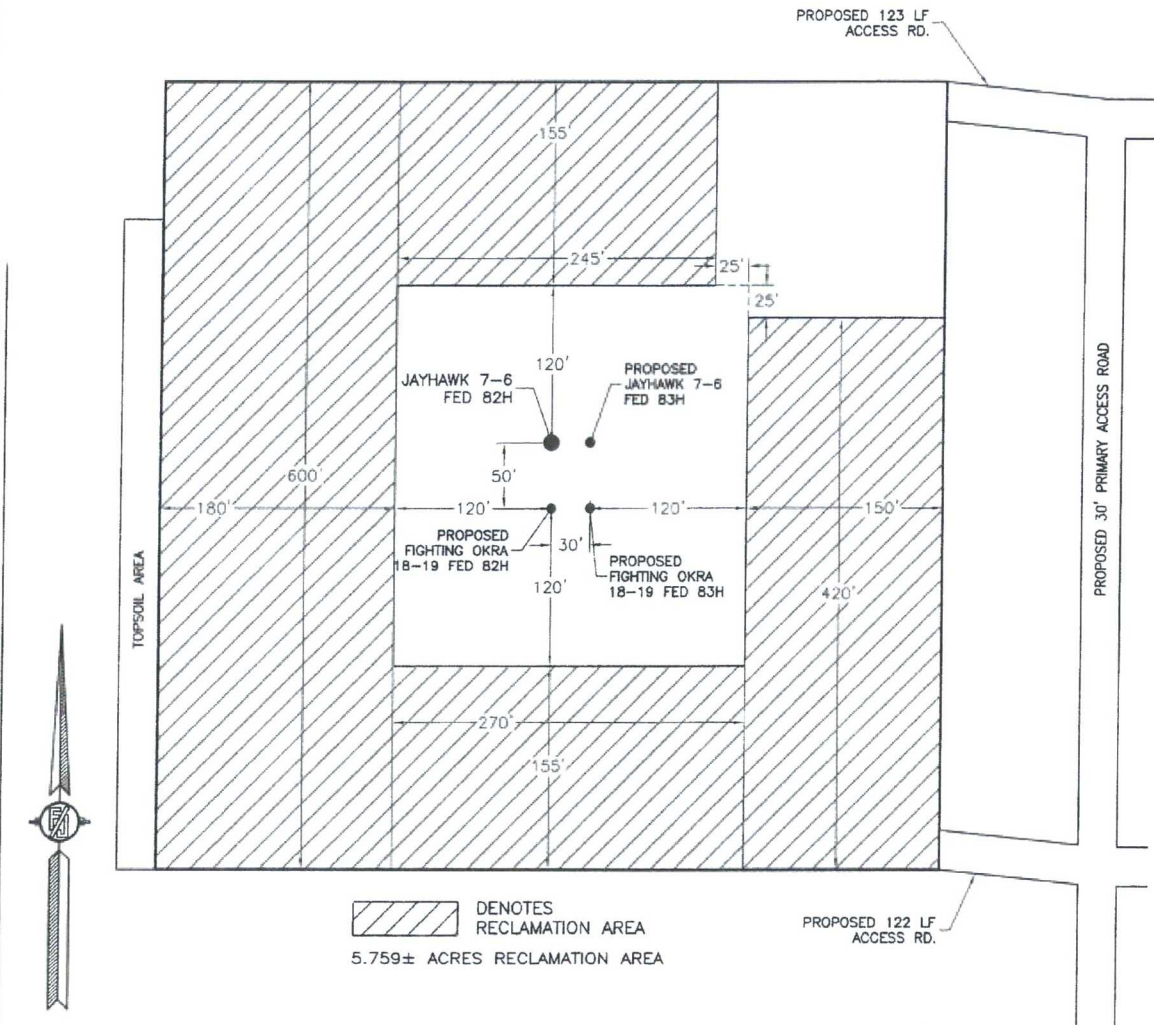


SITE MAP

CARLSBAD, NEW MEXICO

*PROPOSED INTERIM SITE RECLAMATION
FOR JAYHAWK 7-6 FED 82H
SECTION 18, TOWNSHIP 26 SOUTH, RANGE 34 EAST, N.M.P.M.
LEA COUNTY, STATE OF NEW MEXICO*

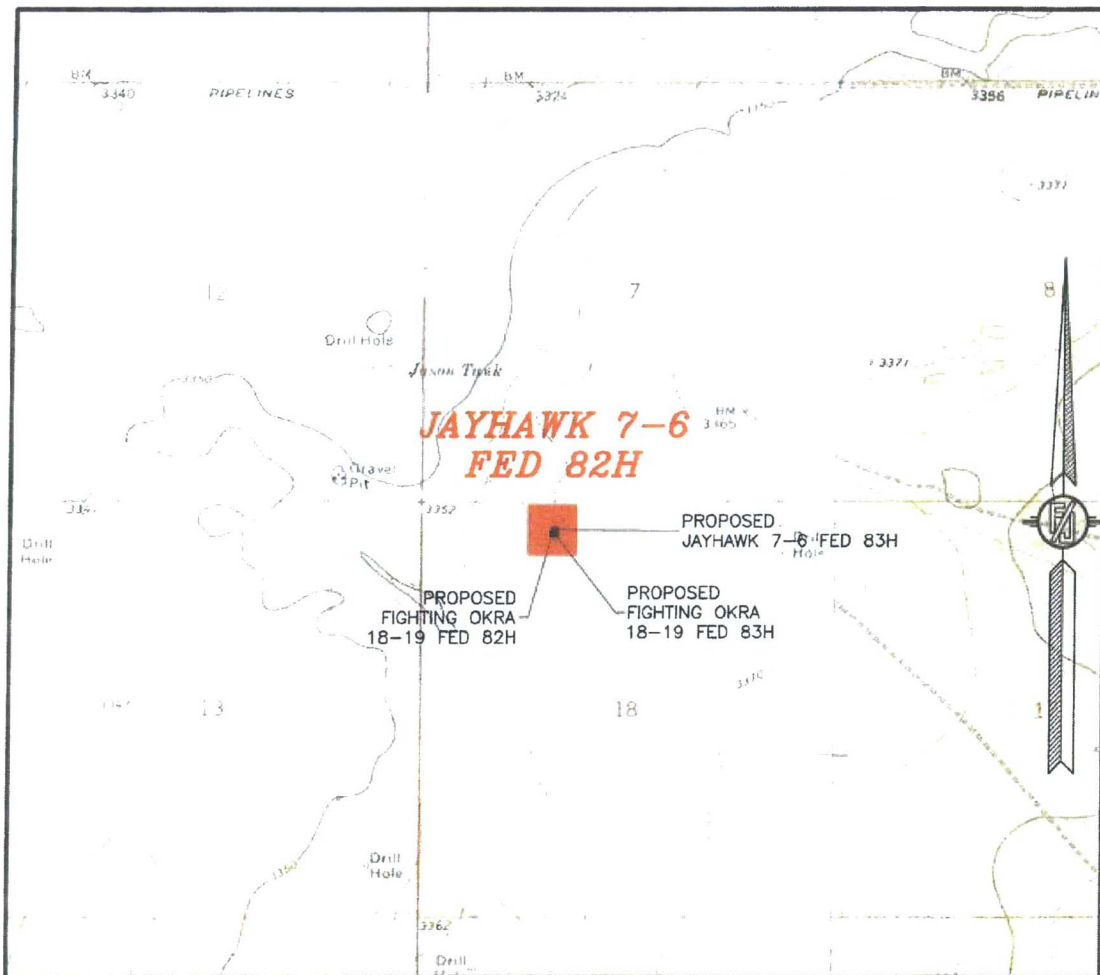


DEVON ENERGY PRODUCTION COMPANY, L.P.
JAYHAWK 7-6 FED 82H
LOCATED 330 FT. FROM THE NORTH LINE
AND 1665 FT. FROM THE WEST LINE OF
SECTION 18, TOWNSHIP 26 SOUTH,
RANGE 34 EAST, N.M.P.M.
LEA COUNTY, STATE OF NEW MEXICO

DECEMBER 15, 2016

MADRON SURVEYING, INC. 301 SOUTH CANAL (575) 234-3341 CARLSBAD, NEW MEXICO SURVEY NO. 4811A

SECTION 18, TOWNSHIP 26 SOUTH, RANGE 34 EAST, N.M.P.M.
LEA COUNTY, STATE OF NEW MEXICO
LOCATION VERIFICATION MAP



USGS QUAD MAP:
PADUCA BREAKS EAST

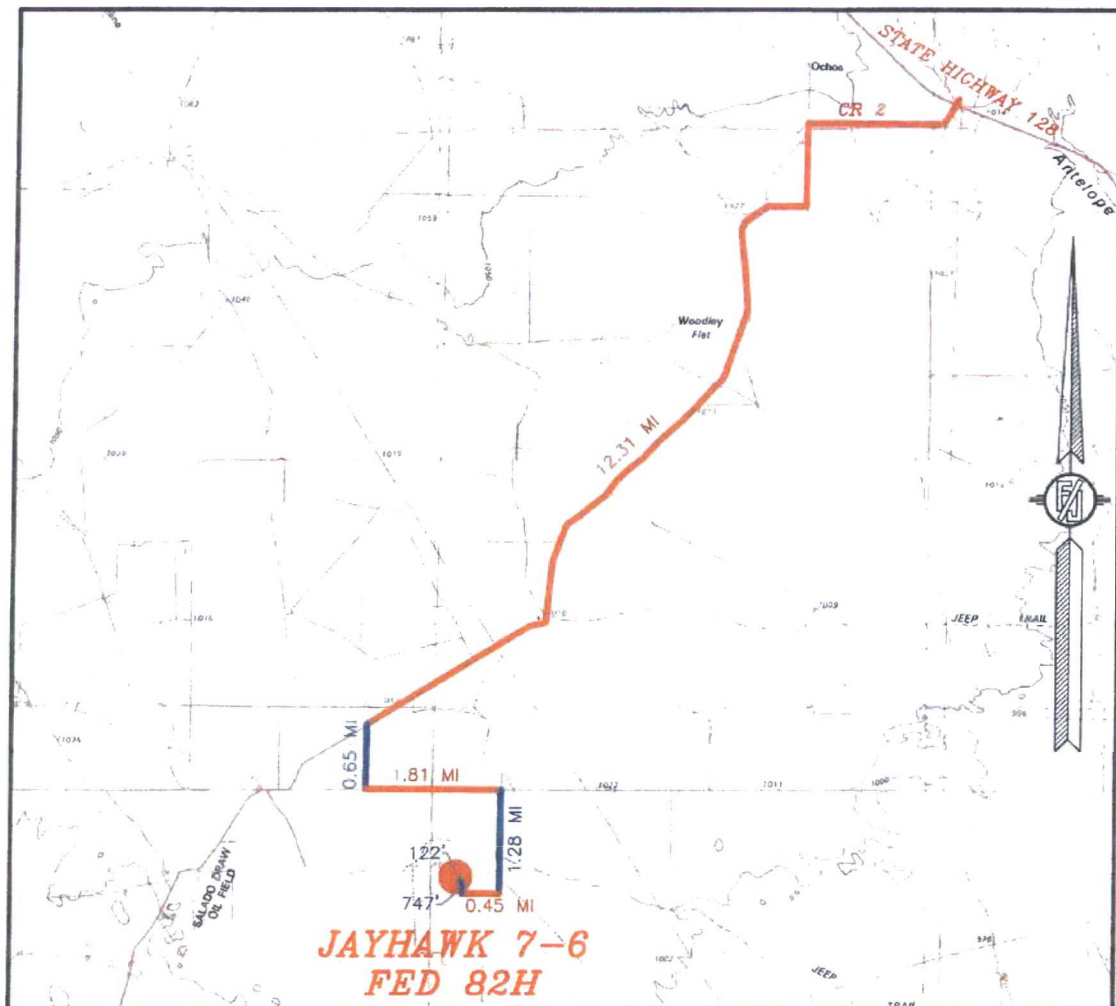
NOT TO SCALE

DEVON ENERGY PRODUCTION COMPANY, L.P.
JAYHAWK 7-6 FED 82H
LOCATED 330 FT. FROM THE NORTH LINE
AND 1665 FT. FROM THE WEST LINE OF
SECTION 18, TOWNSHIP 26 SOUTH,
RANGE 34 EAST, N.M.P.M.
LEA COUNTY, STATE OF NEW MEXICO

DECEMBER 15, 2016

MADRON SURVEYING, INC. 301 SOUTH CANAL (575) 234-3341 CARLSBAD, NEW MEXICO SURVEY NO. 4811A

SECTION 18, TOWNSHIP 26 SOUTH, RANGE 34 EAST, N.M.P.M.
LEA COUNTY, STATE OF NEW MEXICO
VICINITY MAP



DISTANCES IN MILES

NOT TO SCALE

DEVON ENERGY PRODUCTION COMPANY, L.P.

JAYHAWK 7-6 FED 82H

LOCATED 330 FT. FROM THE NORTH LINE
AND 1665 FT. FROM THE WEST LINE OF

SECTION 18, TOWNSHIP 26 SOUTH,

RANGE 34 EAST, N.M.P.M.

LEA COUNTY, STATE OF NEW MEXICO

DECEMBER 15, 2016

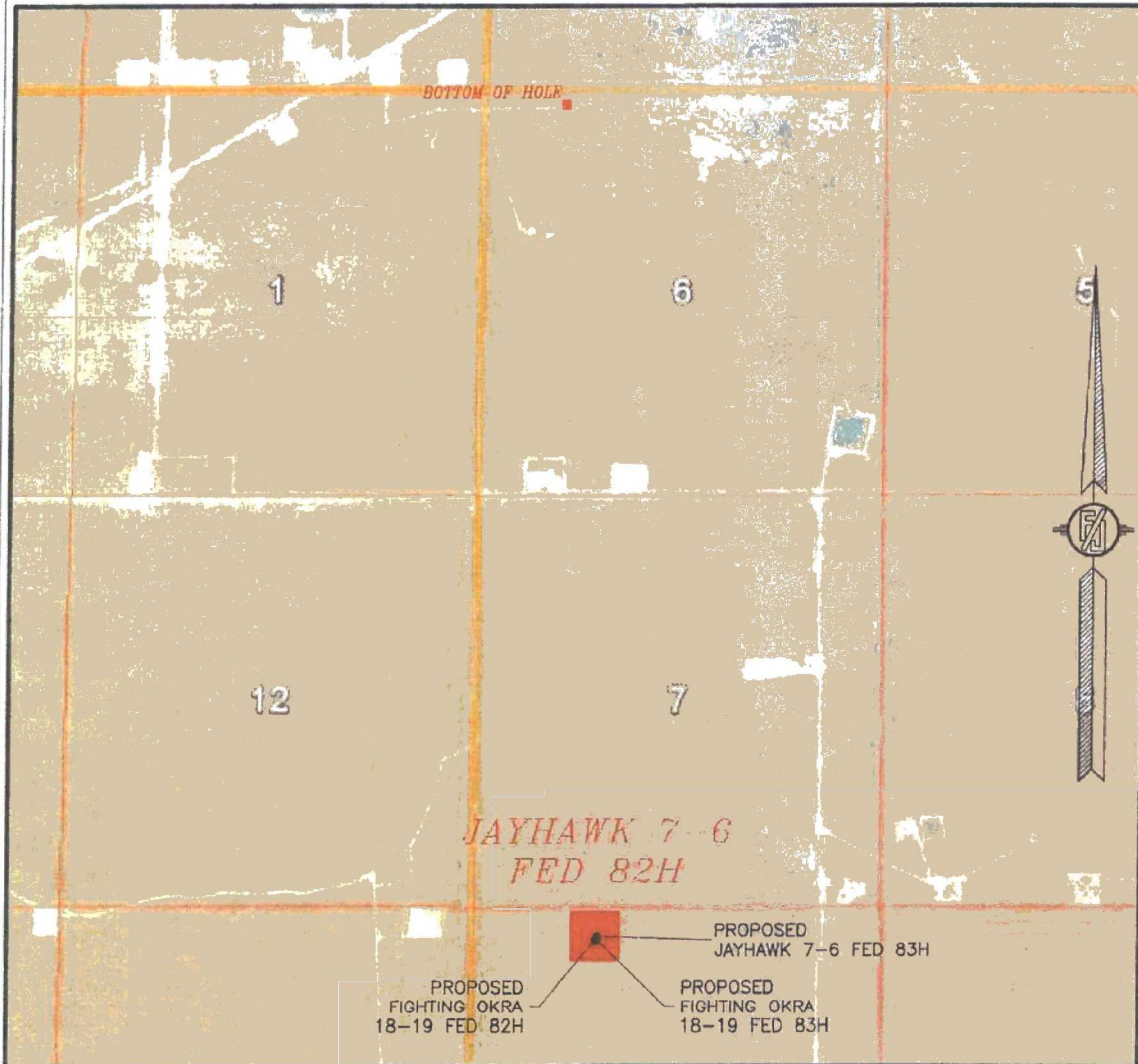
DIRECTIONS TO LOCATION

FROM THE INTERSECTION OF STATE HIGHWAY 128 (JAL HWY)
AND CR 2 (BATTLE AXE ROAD) GO SOUTH ON CR 2 12.31
MILES, TURN LEFT ON A CALICHE LEASE ROAD GO SOUTH 0.65
MILE TO PIPELINE ROAD TURN LEFT GO EAST 1.81 MILES TURN
RIGHT AT CALICHE LEASE ROAD GO SOUTH 1.28 MILES TO A
PROPOSED ROAD SURVEY, FOLLOW ROAD SURVEY WEST 0.45
MILE, THEN NORTH 747', THEN WEST 122' TO THE SOUTHWEST
CORNER OF PAD FOR THIS LOCATION.

SURVEY NO. 4811A

MADRON SURVEYING, INC. 301 SOUTH CANAL (575) 234-3341 CARLSBAD, NEW MEXICO

SECTION 18, TOWNSHIP 26 SOUTH, RANGE 34 EAST, N.M.P.M.
LEA COUNTY, STATE OF NEW MEXICO
AERIAL PHOTO



NOT TO SCALE
AERIAL PHOTO:
GOOGLE EARTH
NOVEMBER 2015

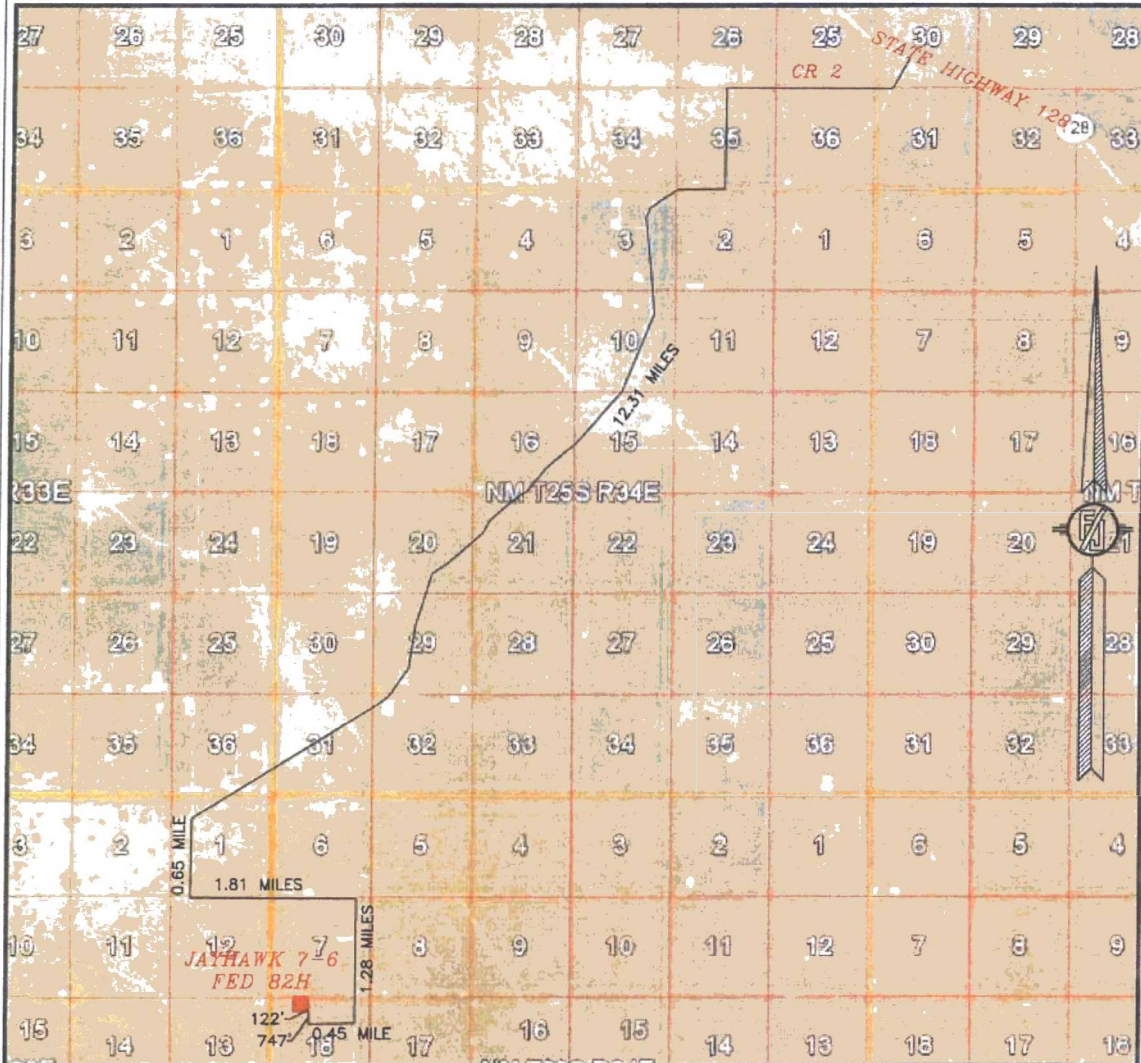
DEVON ENERGY PRODUCTION COMPANY, L.P.
JAYHAWK 7-6 FED 82H
LOCATED 330 FT. FROM THE NORTH LINE
AND 1665 FT. FROM THE WEST LINE OF
SECTION 18, TOWNSHIP 26 SOUTH,
RANGE 34 EAST, N.M.P.M.
LEA COUNTY, STATE OF NEW MEXICO

DECEMBER 15, 2016

SURVEY NO. 4811A

MADRON SURVEYING, INC. 301 SOUTH CANAL (575) 234-3341 CARLSBAD, NEW MEXICO

SECTION 18, TOWNSHIP 26 SOUTH, RANGE 34 EAST, N.M.P.M.
LEA COUNTY, STATE OF NEW MEXICO
ACCESS AERIAL ROUTE MAP



NOT TO SCALE
AERIAL PHOTO:
GOOGLE EARTH
NOVEMBER 2015

DEVON ENERGY PRODUCTION COMPANY, L.P.

JAYHAWK 7-6 FED 82H

LOCATED 330 FT. FROM THE NORTH LINE
AND 1665 FT. FROM THE WEST LINE OF
SECTION 18, TOWNSHIP 26 SOUTH,
RANGE 34 EAST, N.M.P.M.
LEA COUNTY, STATE OF NEW MEXICO

DECEMBER 15, 2016

SURVEY NO. 4811A

MADRON SURVEYING, INC. 301 SOUTH CANAL (575) 234-3341 CARLSBAD, NEW MEXICO