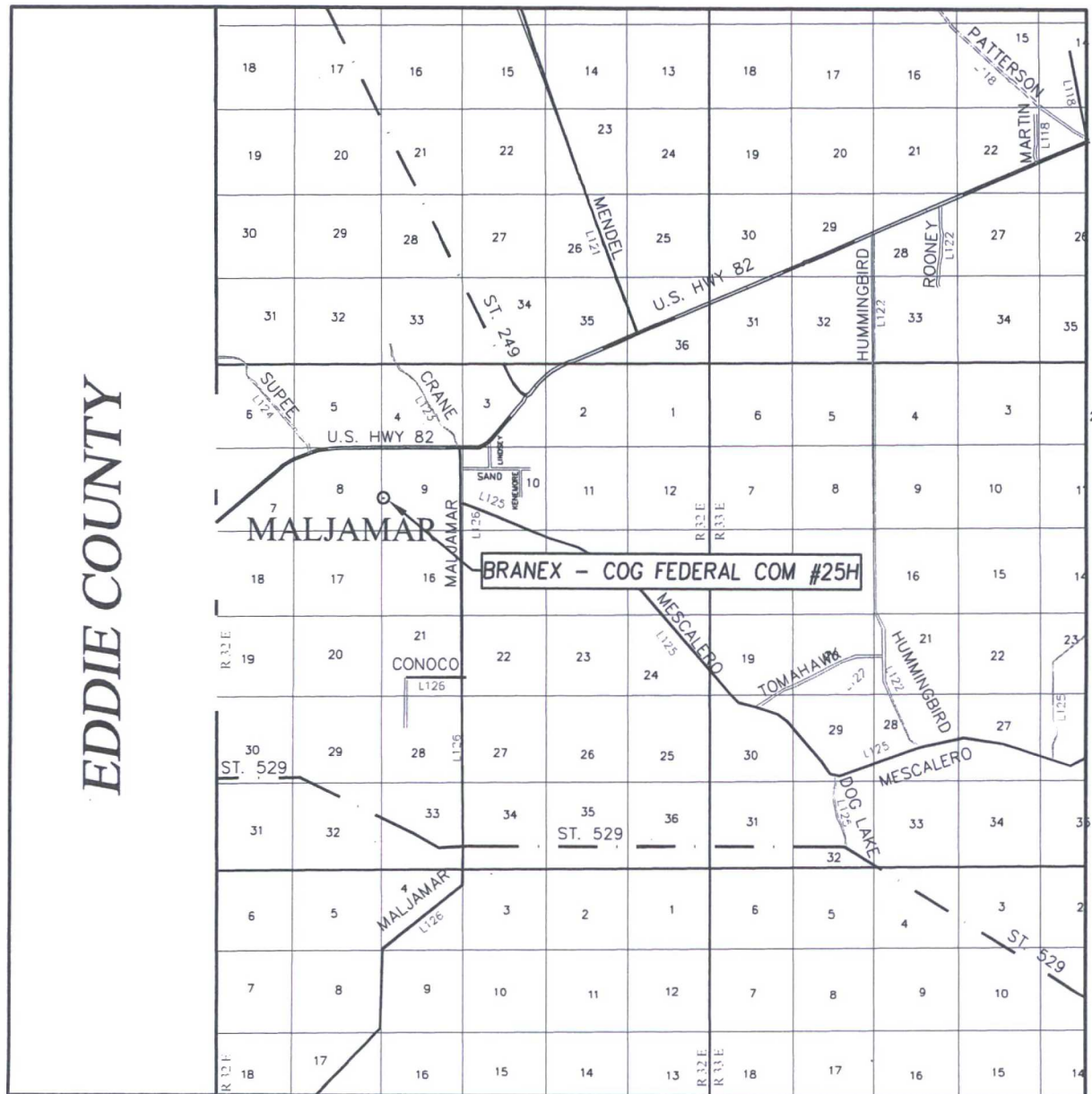


VICINITY MAP



SCALE: 1" = 2 MILES

SEC. 9 TWP. 17-S RGE. 32-E

SURVEY N.M.P.M.

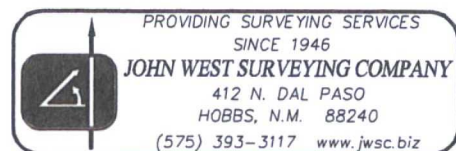
COUNTY LEA STATE NEW MEXICO

DESCRIPTION 2075' FSL & 115' FWL

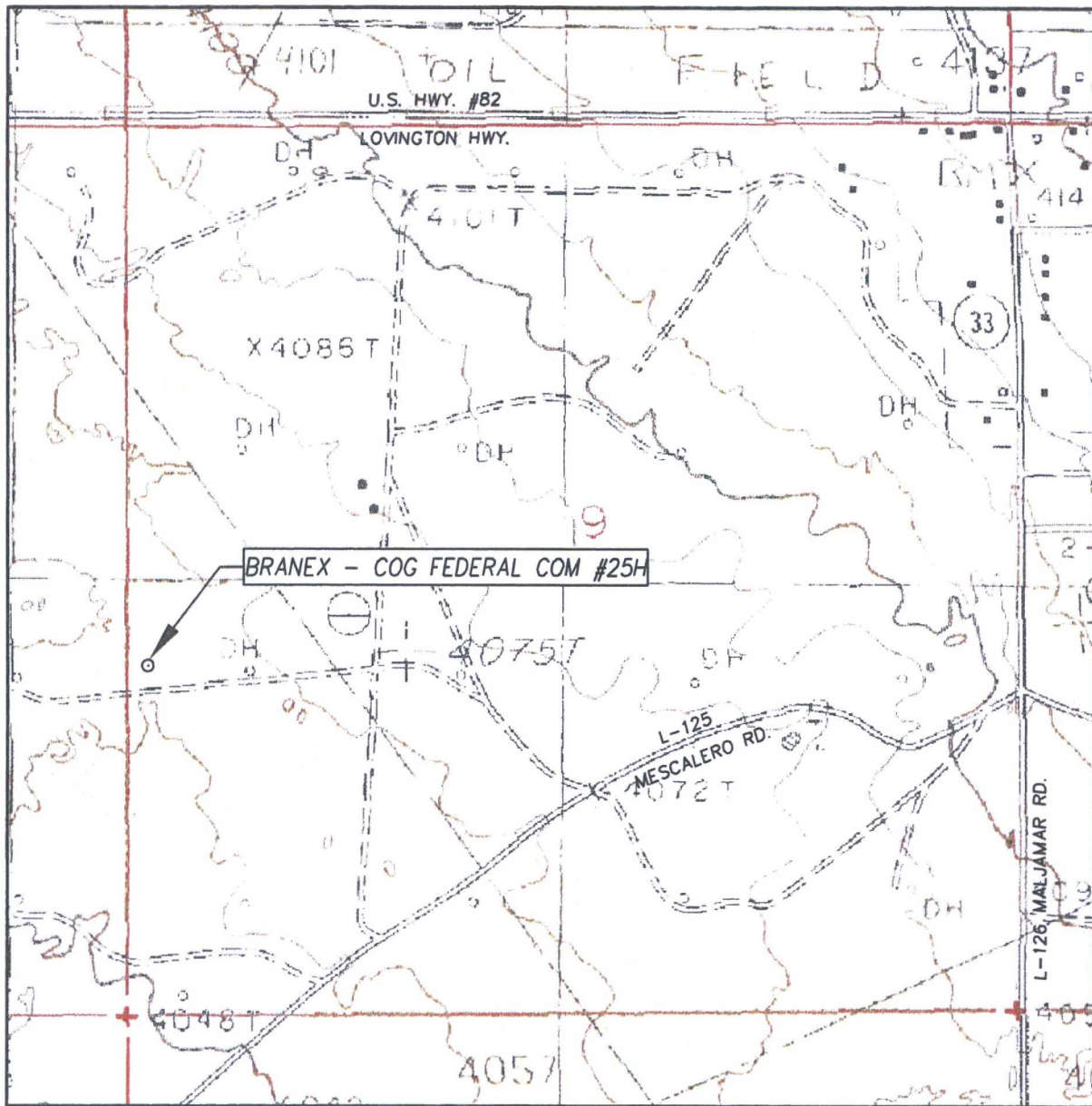
ELEVATION 4068'

OPERATOR COG OPERATING, LLC

LEASE BRANEX - COG FEDERAL COM



LOCATION VERIFICATION MAP



SCALE: 1" = 1000'

CONTOUR INTERVAL:
MALJAMAR, N.M. - 10'
DOG LAKE, N.M. - 10'

SEC. 9 TWP. 18-S RGE. 27-E

SURVEY N.M.P.M.

COUNTY LEA STATE NEW MEXICO

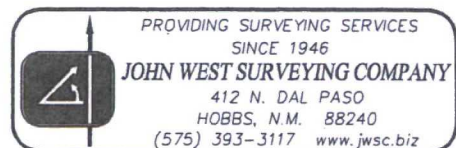
DESCRIPTION 2075' FSL & 115' FWL

ELEVATION 4068'

OPERATOR COG OPERATING, LLC

LEASE BRANEX - COG FEDERAL COM

U.S.G.S. TOPOGRAPHIC MAP
MALJAMAR, N.M.



Branex-COG Federal Com #25H

Estimated Distance SHL to
BHL 4869.4 ft WE

Estimated Distance to nearest
wellbore 1 ft N

SHL

BHL

1 MILE

17S 32E



SENM AREA
Lea County, New Mexico

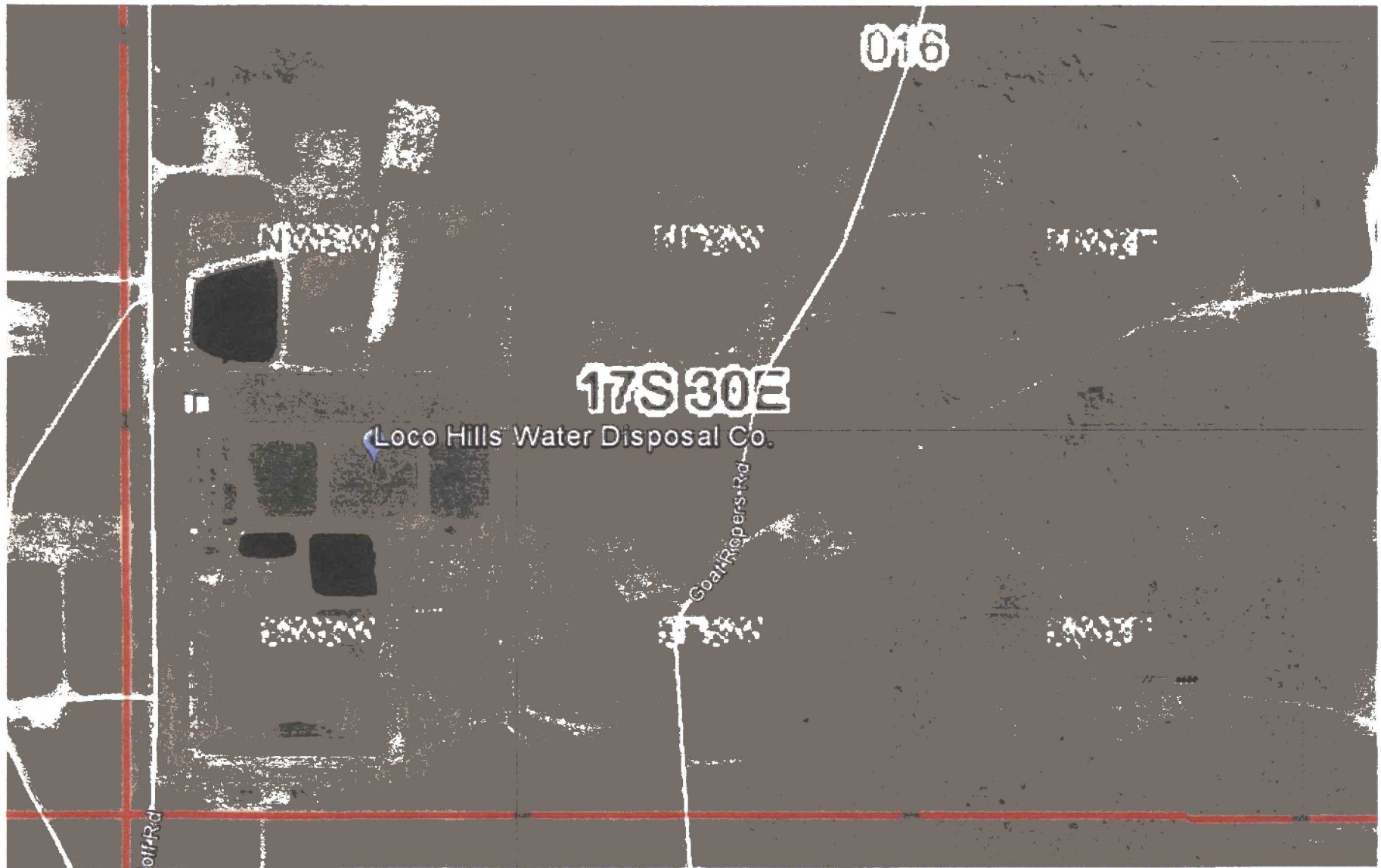
Branex-COG Federal Com #25H

Sec. 9, T17S-R32E
SHL 2075' FSL & 115' FWL
BHL 2310' FSL 330' FEL

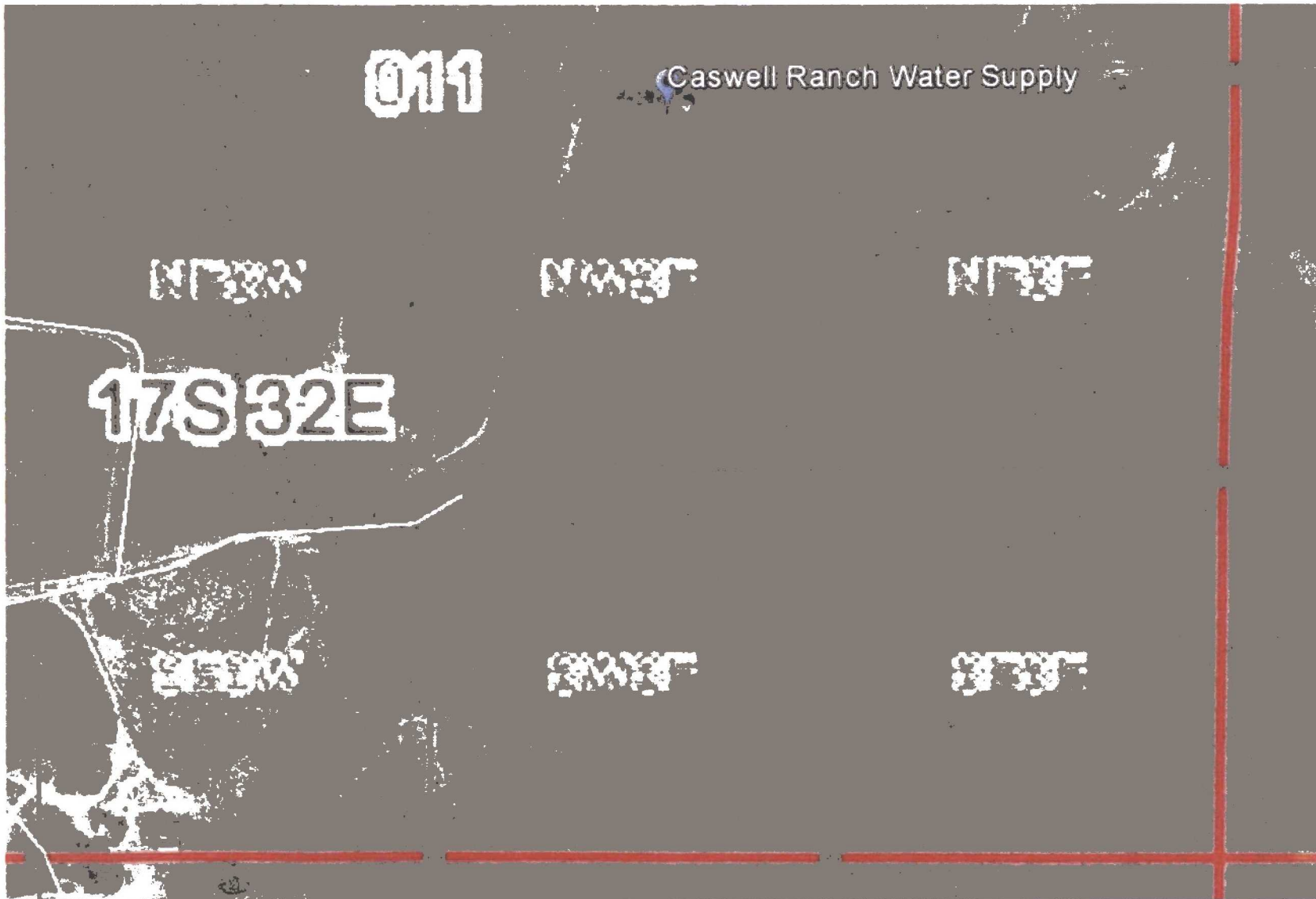
Author:

Date:

Loco Hills Water Disposal Co. Water Well Map



Caswell Ranch Water Supply Map



WELL SITE AND ROAD CONSTRUCTION

HOBBS OCD

SEP 11 2017

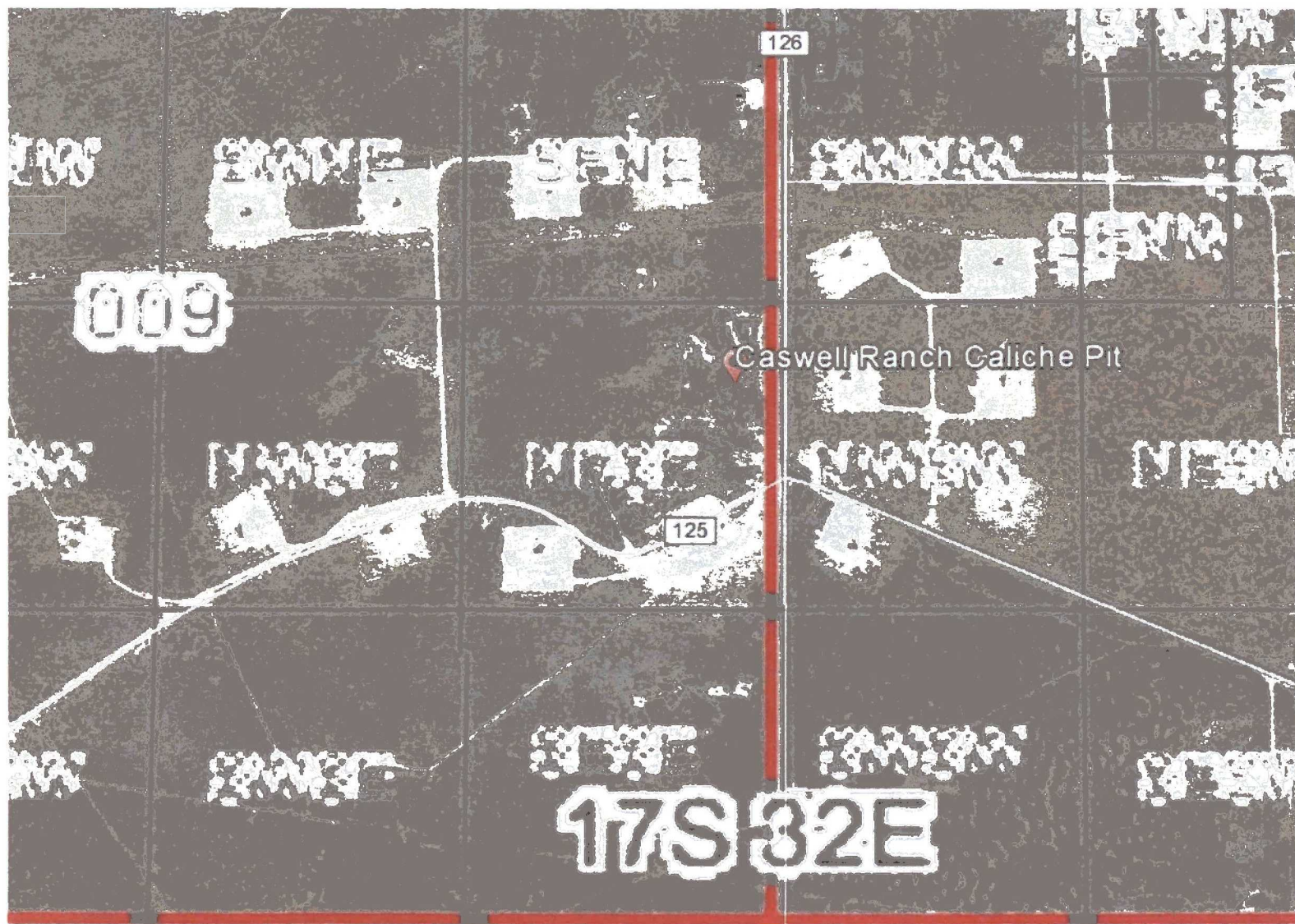
1. Source of Construction Materials and Location "Turn-Over" Procedure:

RECEIVED

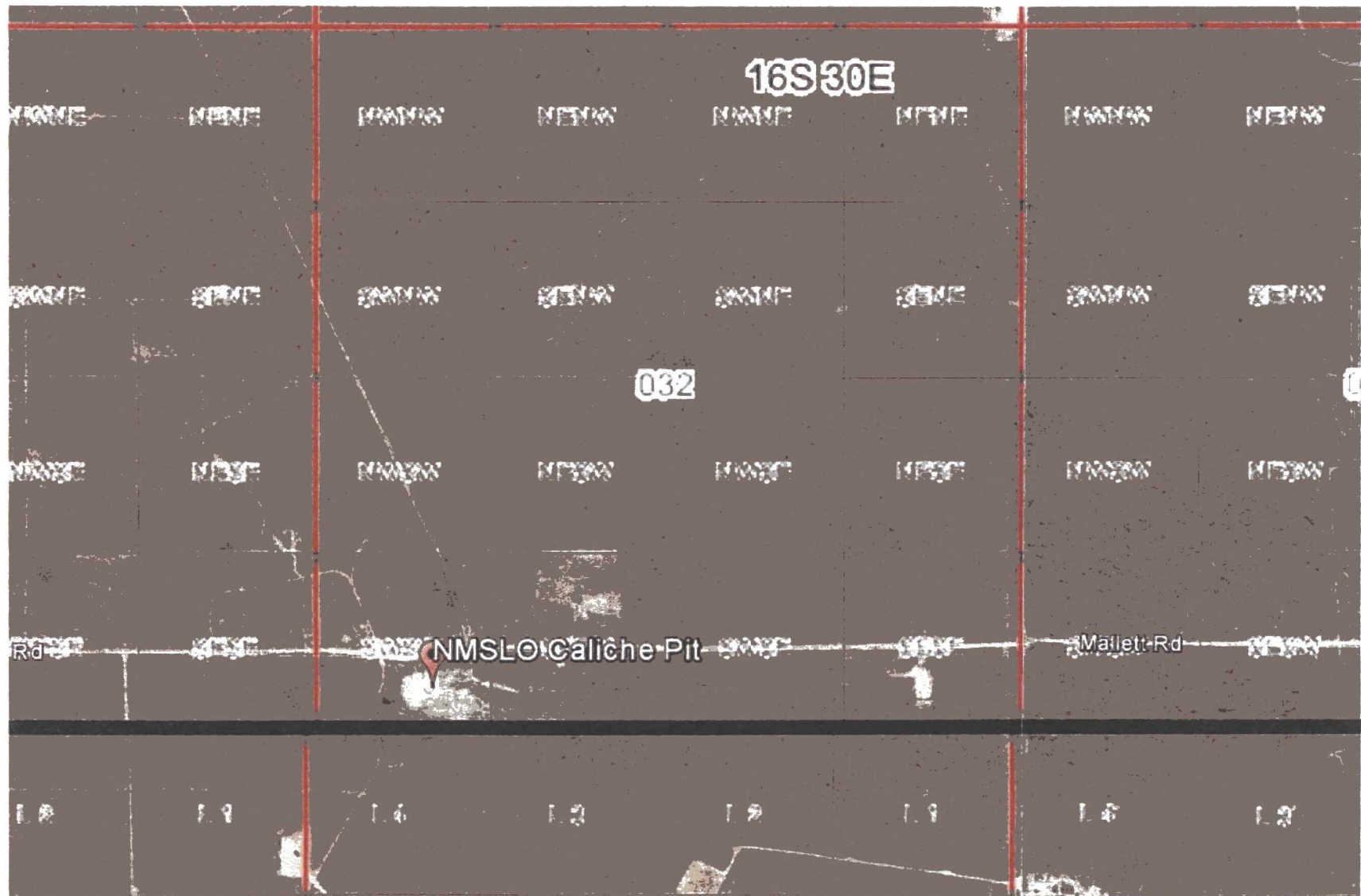
Obtaining caliche: The primary way of obtaining caliche to build locations and roads will be by "turning over" the location. This means, caliche will be obtained from the actual well sight. A caliche permit will be obtained from BLM prior to pushing up any caliche. 2400 cu. Yards is max amount of caliche needed for pad and roads. Amount will vary for each pad. The procedure below has been approved by BLM personnel:

- A. The top 6 inches of topsoil is pushed off and stockpiled along the side of the location.
- B. An approximate 120' X 120' area is used within the proposed well site to remove caliche.
- C. Subsoil is removed and piled alongside the 120' by 120' area within the pad site.
- D. When caliche is found, material will be stock piled within the pad site to build the location and road.
- E. Then subsoil is pushed back in the hole and caliche is spread accordingly across entire location and road.
- F. Once well is drilled, the stock piled top soil will be used for interim reclamation and spread along areas where caliche is picked up and the location size is reduced. Neither caliche nor subsoil will be stock piled outside of the well pad. Topsoil will be stockpiled along the edge of the pad as depicted in attached plat.
 - In the event that no caliche is found onsite, caliche will be hauled in from a BLM approved caliche pit.

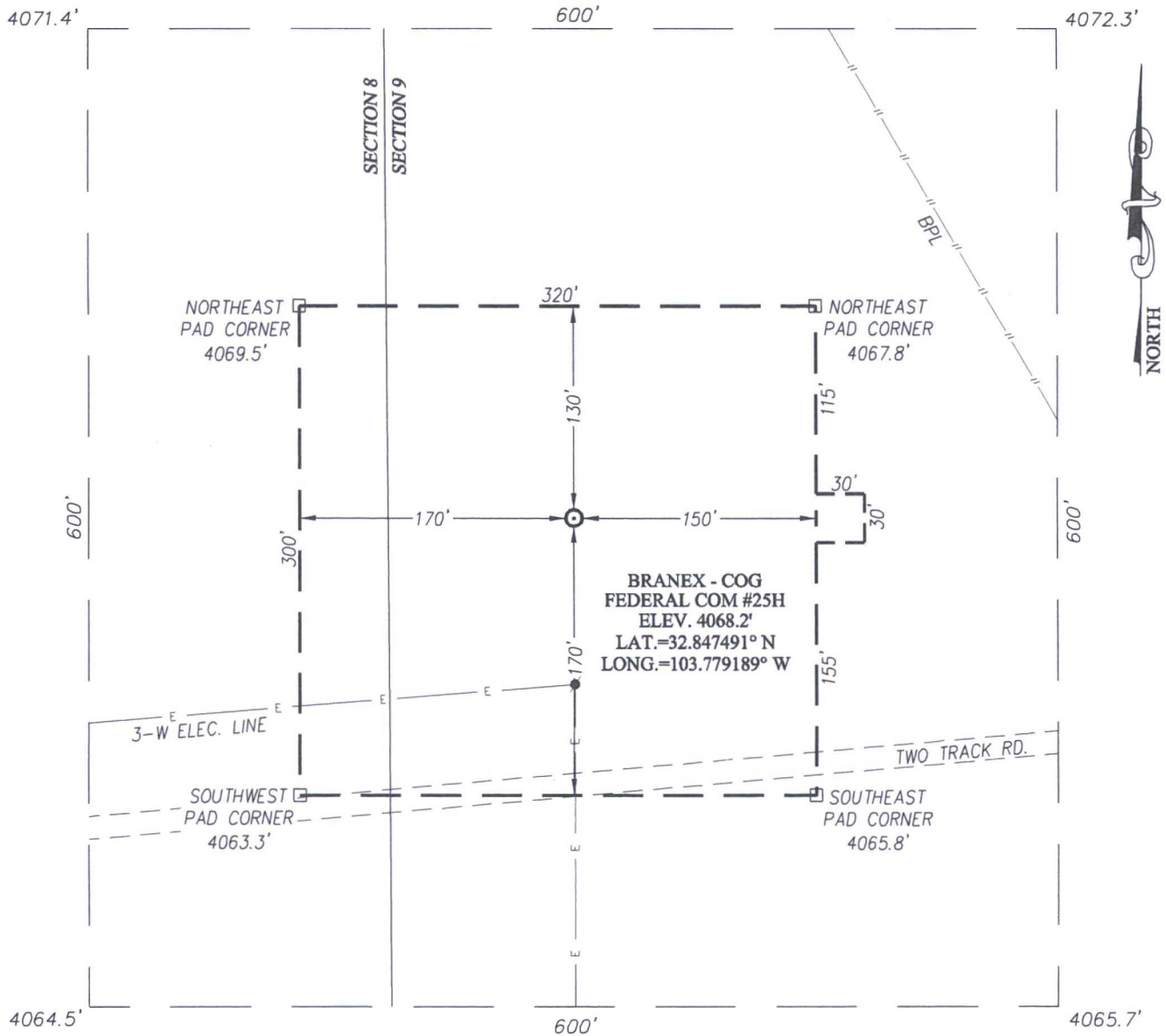
Caswell Ranch Caliche Pit Map



NMSLO Caliche Pit

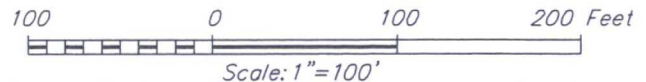
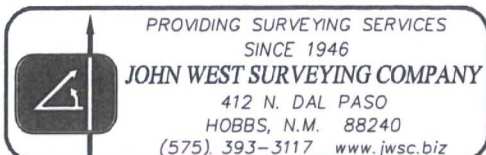


SECTION 9, TOWNSHIP 17 SOUTH, RANGE 32 EAST, N.M.P.M.
LEA COUNTY NEW MEXICO



DIRECTIONS TO LOCATION

FROM THE INTERSECTION OF U.S. HWY. #82 AND L-126 (MALJAMAR RD.) GO SOUTH ON L-126 APPROX. 0.6 MILES. TURN RIGHT AND GO SOUTHWEST APPROX. 0.8 MILES. TURN RIGHT AND GO NORTH APPROX. 0.3 MILES. TURN LEFT AND GO WEST APPROX. 0.2 MILES. THE LOCATION STAKE IS 165 FEET NORTH OF THE TWO TRACK RD.

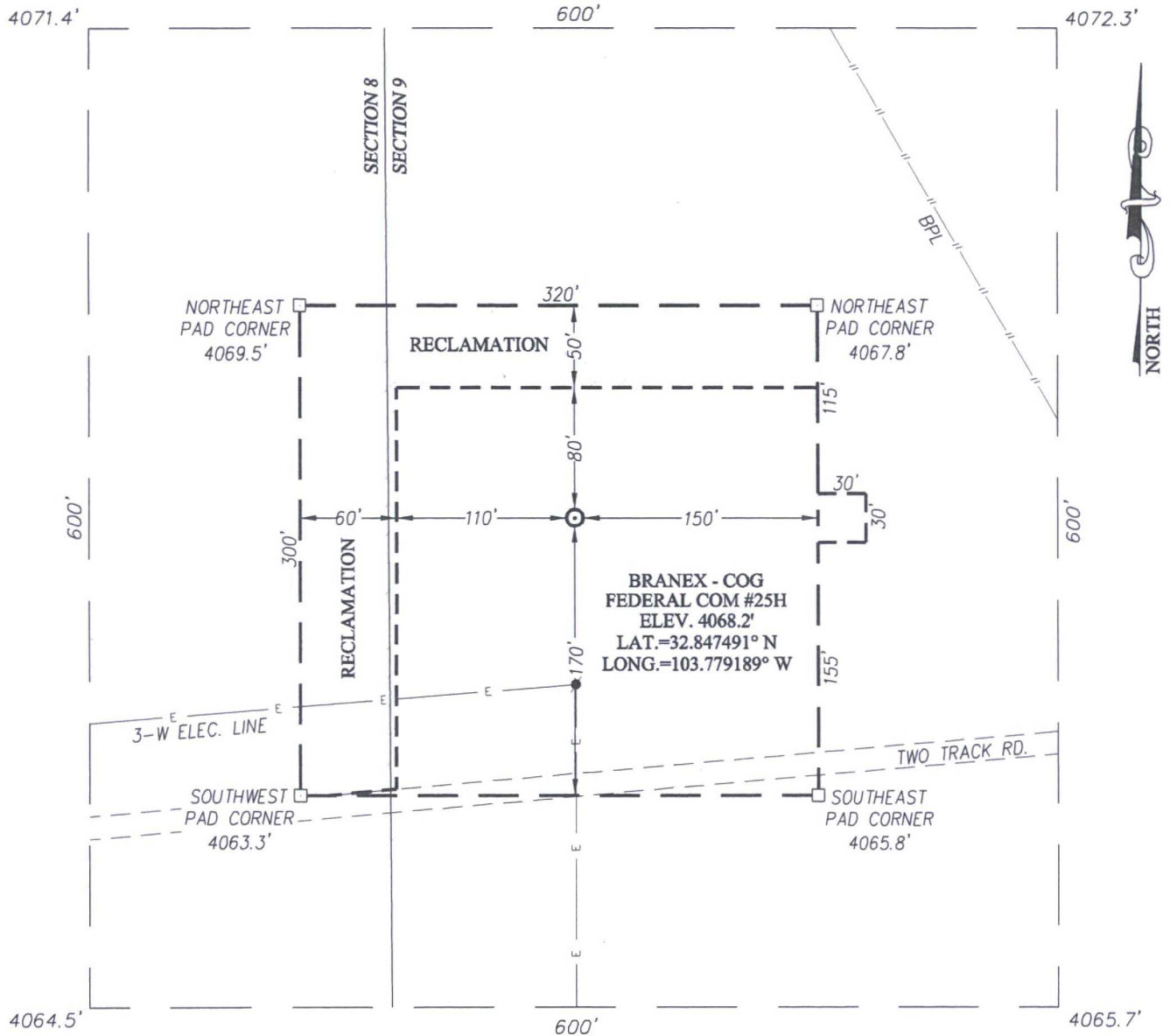


COG OPERATING, LLC

**BRANEX - COG FEDERAL COM #25H WELL
LOCATED 2075 FEET FROM THE SOUTH LINE
AND 115 FEET FROM THE WEST LINE OF SECTION 9,
TOWNSHIP 17 SOUTH, RANGE 32 EAST, N.M.P.M.,
LEA COUNTY, NEW MEXICO**

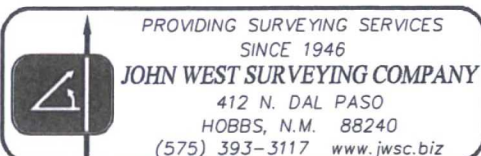
Survey Date: 9/7/12	CAD Date: 2/5/15	Drawn By: LSL
W.O. No.: 15130179	Rev: .	Rel. W.O.: 12111548
		Sheet 1 of 1

SECTION 9, TOWNSHIP 17 SOUTH, RANGE 32 EAST, N.M.P.M.
LEA COUNTY NEW MEXICO



DIRECTIONS TO LOCATION

FROM THE INTERSECTION OF U.S. HWY. #82 AND L-126 (MALJAMAR RD.) GO SOUTH ON L-126 APPROX. 0.6 MILES. TURN RIGHT AND GO SOUTHWEST APPROX. 0.8 MILES. TURN RIGHT AND GO NORTH APPROX. 0.3 MILES. TURN LEFT AND GO WEST APPROX. 0.2 MILES. THE LOCATION STAKE IS 165 FEET NORTH OF THE TWO TRACK RD.



COG OPERATING, LLC

**BRANEX - COG FEDERAL COM #25H WELL
LOCATED 2075 FEET FROM THE SOUTH LINE
AND 115 FEET FROM THE WEST LINE OF SECTION 9,
TOWNSHIP 17 SOUTH, RANGE 32 EAST, N.M.P.M.,
LEA COUNTY, NEW MEXICO**

Survey Date: 9/7/12	CAD Date: 2/5/15	Drawn By: ACK
W.O. No.: 15130179	Rev: 2/21/17	Rel. W.O.: 12111548
Sheet 1 of 1		

Branex-COG Federal Com #25H Surface Flowlines Map

