

8/24/2017

LEGEND

- | | | | |
|-----------------------------------------------------------------------------------|---------------|-----------------------------------------------------------------------------------|-------------------------|
|  | Valve Open |  | Turbine/ Coriolis Meter |
|  | Valve Closed |  | Oil |
|  | Valve Sealed |  | Gas |
|  | Orifice Meter |  | Water |

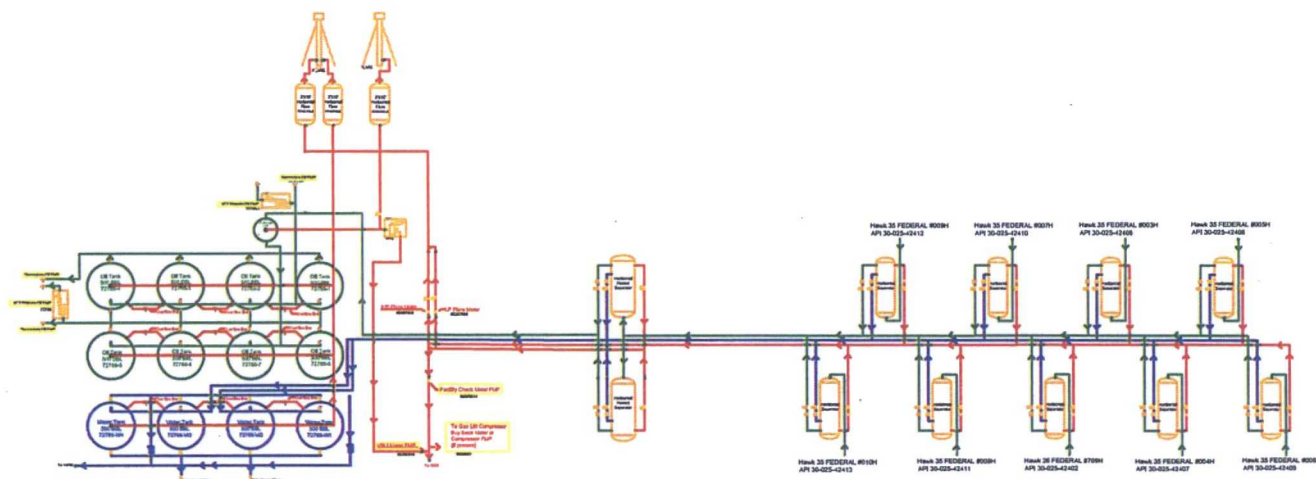
FACILITY DIAGRAM

Not shown: Auxiliary process systems such as fuel/ pilot gas system, gas lift system, roll lines, recirculating lines, vent lines, and small drain lines

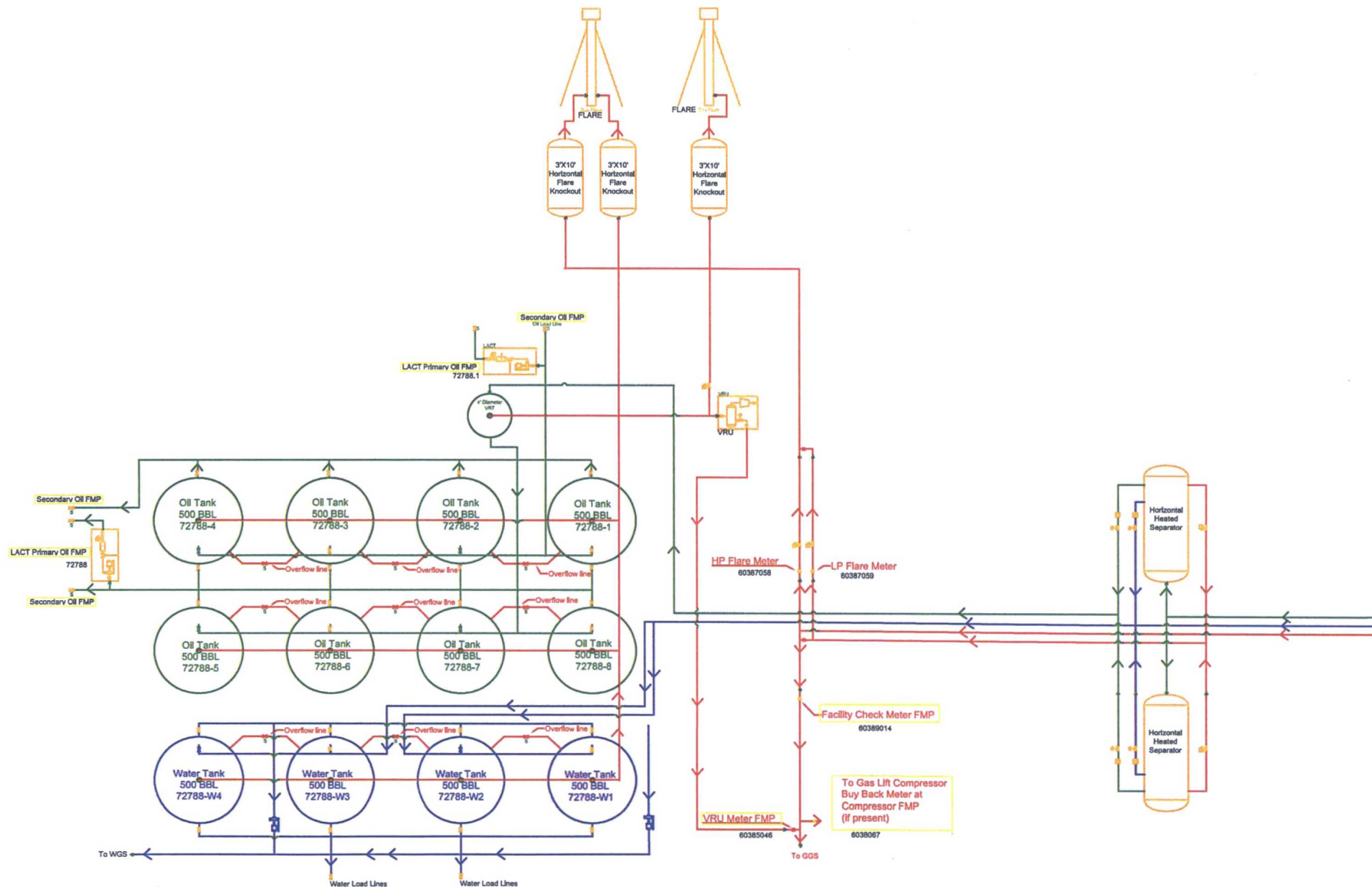
PRODUCTION PHASE: All valves that provide access to production are effectively sealed in the closed position.

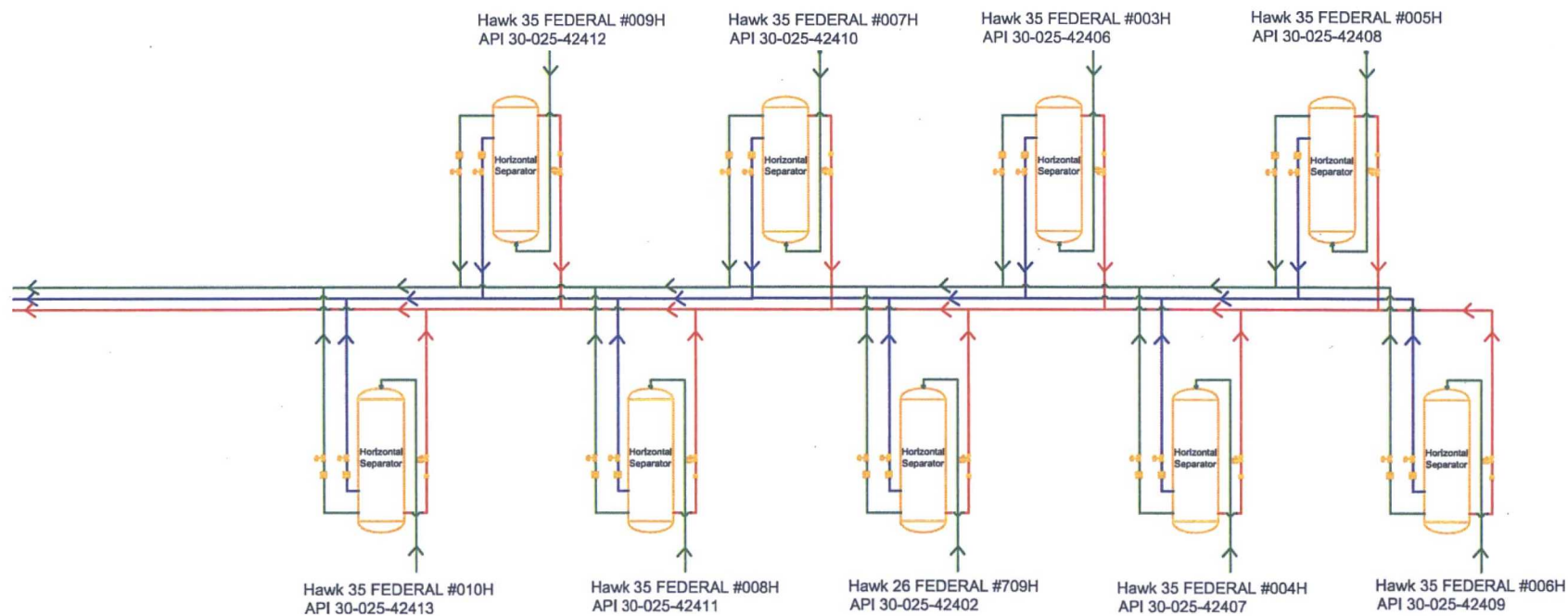
SALES THROUGH LACT UNITS: Sale is measured through LACT units. All other valves that provide access to production (load-out valves) are effectively sealed in the closed position.

WATER TANKS: If the possibility for oil to enter water tanks exists through common recirculating or equalizing lines, oil tanks are isolated from water tanks by valves effectively sealed in the closed position.



Facility Overview: Please see pages 2 and 3 for details.





Bureau of Land Management

Hobbs Field Office

414 W. Taylor

Hobbs, New Mexico

505.393.3612

WATER PRODUCTION & DISPOSAL INFORMATION

Well: HAWK 35 FEDERAL #6H
NENW Sec 35 T24S, R33E
30-025-42409

1. Name of formations producing water on lease: **BONE SPRINGS**
2. Amount of water produced from all formations in barrels per day **3000-4500 BWPD**
3. How water is stored on lease **Tanks 4-500 bbl tanks**
4. How water is moved to disposal facility **Pipeline/Trucked**
5. Disposal Facility:
 - a. Facility Operators name **EOG RESOURCES, INC**
 - b. Name of facility or well name & number
Black Bear 36 State #5
30-025-40585
H-36-25S-33E
Permit no 1359
Dragon 36 State SWD #11
30-025-41615
C-36-24S-33E
Permit no 1486
 - c. Type of facility or wells **WDW**